



Talbot County **Results** and Indicators Data Review FY 24

Compiled by the

Talbot Family Network

Local Management Board for Talbot County

Board Presentation October 17, 2023

FY24 TFN Board of Directors Retreat

WHAT WE'RE GOING TO DO TODAY

- Report: FY23/24 Community Assessment
- FY 24 Data Review
- FY 23 Program Data Review

WHAT WE HOPE TO ACCOMPLISH

- Set FY25 Priority Result Areas
- Plan priorities for Talbot's FY25 Community Partnership Agreement/ CPA

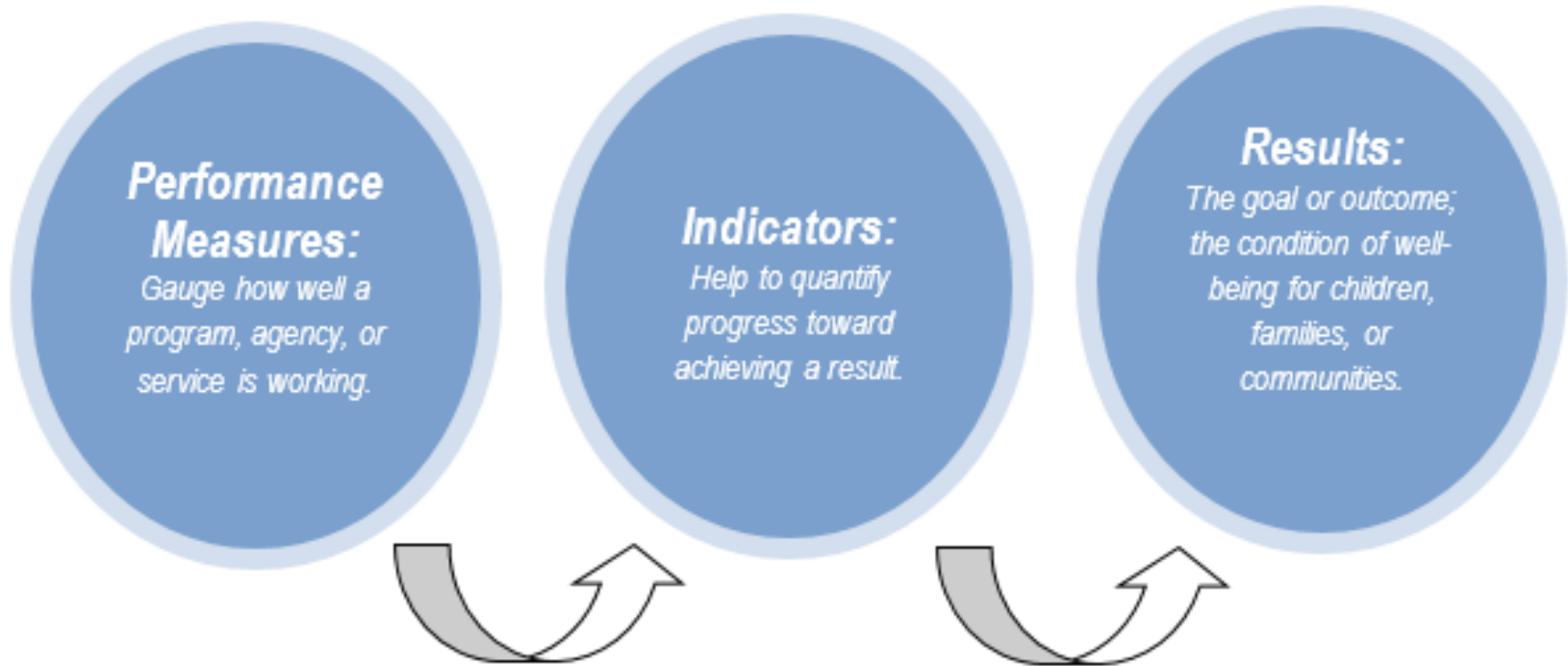
LMBs Need to Answer These Community Accountability Questions

1. What are our community priorities?

2. Are the right strategies in place to achieve these priorities?

3. Is TFN funding the right programs for our community?

Maryland RESULTS AND INDICATORS for Child Wellbeing



POPULATION LEVEL
(aka Program Level)



COMMUNITY LEVEL

Maryland CHILD WELL-BEING RESULTS

❖ FY23-24 TFN Priorities

- Babies Born Healthy

❖ Healthy Children

- Children Enter School Ready to Learn
- Children are Successful in School

❖ Youth will Complete School

❖ Youth have Opportunities for Employment or Career Readiness

- Communities are Safe for Children, Youth and Families

❖ Families are Economically Stable

Children's Cabinet Program/Strategic Priorities

❖ FY23-24 TFN Priorities

- Reducing the Impact of Parental Incarceration on Children, Youth, Families, and Communities
- Reducing Youth Experiencing Homelessness
- ❖ Improving Outcomes for Disconnected/Opportunity Youth
- ❖ Reducing Childhood Hunger
- ❖ Increasing Opportunities for Community-Based Programs and Services for Youth *(not limited to diversion)*
- Preventing Out of State Placements

FY23 TFN Board Prioritization of Community Concerns

- ✓ **Mental Health Concerns**
- ✓ **Emotional Trauma in Youth**
- ✓ **Kindergarten Readiness**
- ✓ **Childhood Poverty including**
 - Access to Affordable Housing
 - Access to Affordable Child Care



Racism/Racial Disparities

Indicator & Strategic Priority Ranking

CONCERN FY23	MONITOR FY23
Child Poverty	Immunizations
Housing	Obesity
Childhood Hunger	Physical Activity
Youth Homelessness	High School Drop Out Rate
Impact of Incarceration	Educational Attainment 18-24 year olds
Mental Health	Juvenile Felony Offenses
Substance Use (Youth)	Disconnected Youth
Vaping (Youth)	Youth Employment 16-19 & 20-24 year olds
Affordable Health Insurance	High School Program Completion
Kindergarten Readiness	School Attendance and MCAP Scores
Child Maltreatment	Crime
Low Birth Weight Babies	Out of Home Placements
Prenatal Care	Births to Adolescents

+ Substance Exposed Newborns

(Indicators for Review FY24)

KEY THEMES from Maryland Children's Cabinet that LMBs should apply to their work

1. Racial
and Ethnic
Disparities

2. ACES and
Trauma-
Informed
Practices

3. Research-
Based
Practices

(also promising practices, best
practices, & evidence-based practices)

+ LMBs are encouraged to adopt a
COLLECTIVE IMPACT approach

Population Overview

AGE	NUMBER	PERCENT
Under 5	1,566	4.2%
0-17 years	6,913	18.4%
18 and older	30,597	81.6%
65 and older	10,920	29.1%
Total Pop	37,510	



HOUSEHOLDS (total 16,810)	
Average Family Size	2.83
Total Families	10,452
Male Householder, no spouse present	524
Female Householder, no spouse present	1,835
Household with children under 18	2,229
Grandparent, responsible for grandchildren	191

Population continued

RACE	NUMBER	PERCENT
Black	4,251	11.3%
Hispanic/Latino	2,647	7.1%
White	30,164	80.4%
American Indian	245	.7%
Asian	474	1.3%
Native Hawaiian or PI	0	-
Two or more	2,026	5.4%

Source: US Census, American Community Survey, 5 year Estimate, 2021



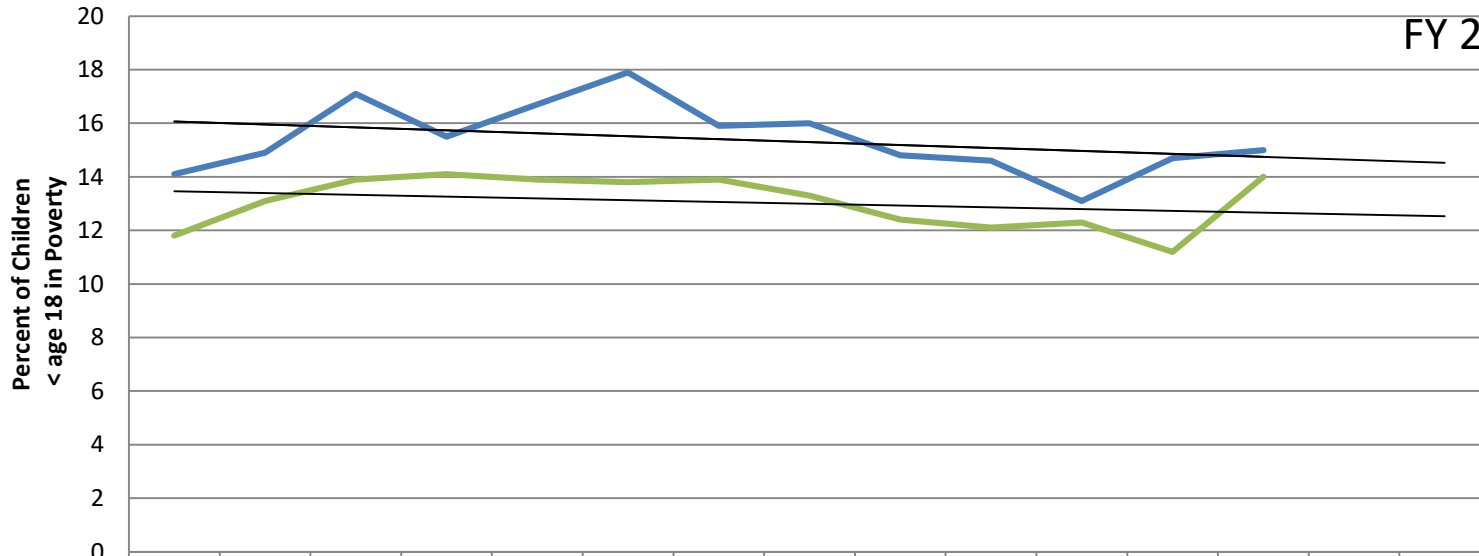
RESULTS FOR CHILD WELL BEING

Families are Economically Stable

Child Poverty

FY 13 – Monitor
 FY 16 – Monitor
 FY 17 – Monitor
 FY 18 – Concern
 FY 19 – Concern
 FY 20 – Concern
 FY 21 – Concern
 FY 22 – Concern
 FY 23 – Concern
 FY 24 – Concern

Child Poverty



	2009	2010	2011	2012	2013	2014	2015	2016	2017	2018	2019	2020	2021		
Talbot	14.1	14.9	17.1	15.5	16.7	17.9	15.9	16	14.8	14.6	13.1	14.7	15		
Maryland	11.8	13.1	13.9	14.1	13.9	13.8	13.9	13.3	12.4	12.1	12.3	11.2	14		

Source: US Census Bureau, Small Area Income and Poverty, **2021 – this is most recent**

Indicator: Child Poverty

Poverty	2018		2019		2020		2021	
	Tal	MD	Tal	MD	Tal	MD	Tal	MD
All Ages	9.2% 3,377	9.1%	8.7% 3,210	9.1%	9.6% 3,497	9%	9.4% 3,511	10.3%
< age 18	14.6% 967	12.1%	13.1% 872	12.3%	14.7% 957	11.2%	15% 1,007	14%
Families with children age 5-17	13.7% 673	11.6%	12.8% 631	11.9%	14.1% 897	10.8%	14.4% 721	13.3%

Source: US Census Bureau, Small Area & Income Poverty Estimates, **2021 – this is most recent**

Individuals Below Poverty	2018		2019		2020		2021	
	Tal	MD	Tal	MD	Tal	MD	Tal	MD
All ages								
Black	20.6%	13.6%	17.2%	13.3%	14.1%	13%	13.5%	13%
Two or More Races	15%	11.3%	13.1%	10.9%	18%	10.5%	18.8%	10.8%
Hispanic	27.1%	13.5%	18.3%	12.7%	18.1%	12%	12.9%	12.5%
White	7.8%	7%	7.1%	6.7%	6.6%	6.5%	6.2%	6.4%

Source: US Census, ACS 2021 – Latest available

- 572 Households below poverty/16,810 Total Households
- 3.4% of Talbot County Households are below the poverty level.

Source: US Census, ACS, 5 year Estimates, 2020

ALICE households

Asset Limited Income Constrained Employed

ALICE IN TALBOT COUNTY

ALICE is an acronym for **A**sset **L**imited, **I**ncome **C**onstrained, **E**mployed – households that earn more than the Federal Poverty Level, but less than the basic cost of living for the county. While conditions have improved for some households, many continue to struggle, especially as wages fail to keep pace with the rising cost of household essentials (housing, child care, food, transportation, health care, and a basic smartphone plan). Households below the ALICE Threshold – ALICE households plus those in poverty – can't afford the essentials.

2021 Point-in-Time-Data

Population: 37,510 **Number of Households:** 16,251 (-3% change from 2019)

Median Household Income: \$79,349 (state average: \$90,203)

Labor Force Participation Rate: 57% (state average: 67%)

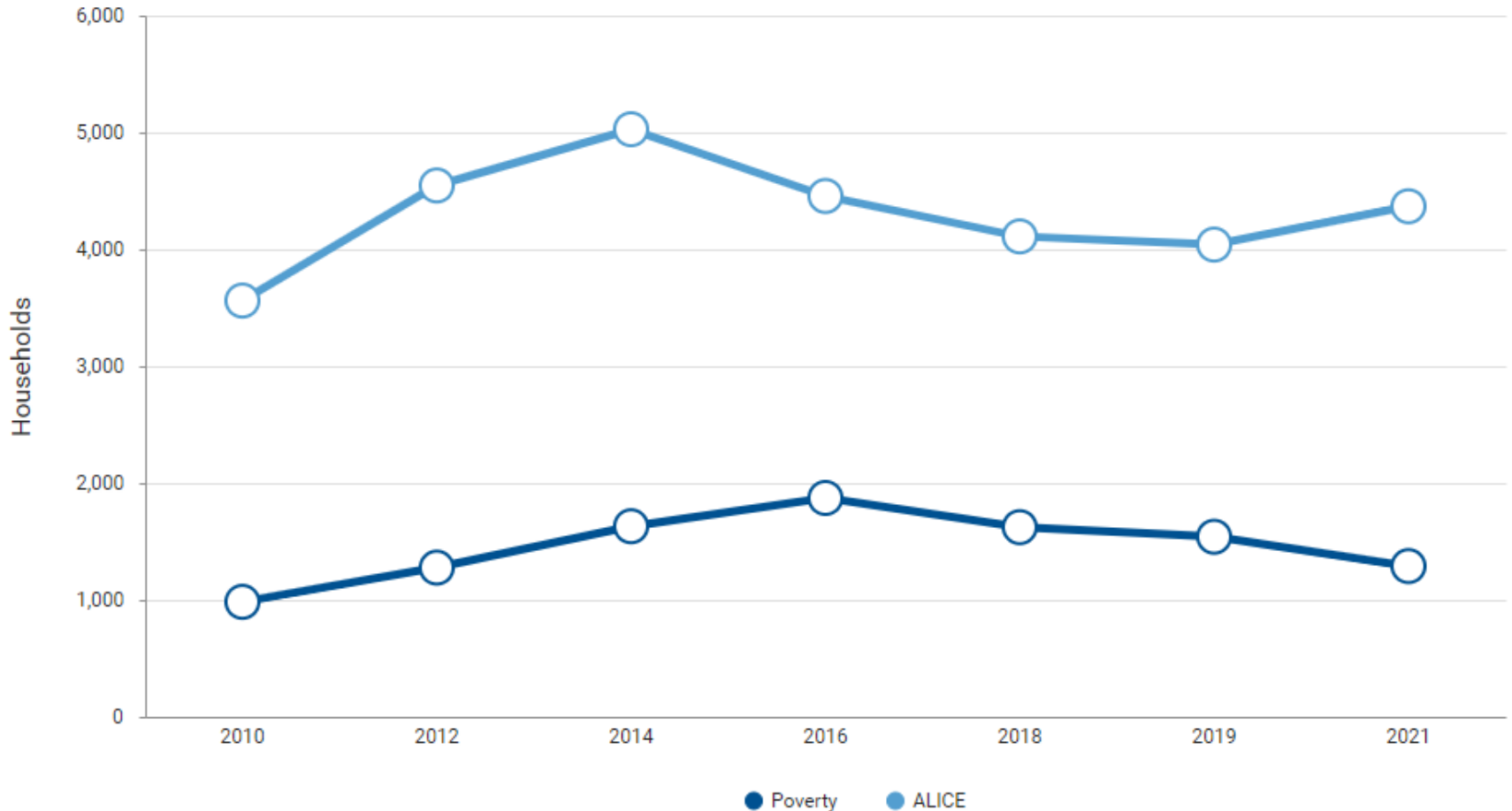
ALICE Households: 27% (state average 28%) **Households in Poverty:** 8% (state average 10%)

ALICE shift over Time

In 2019, pre-pandemic 5,582 households in Talbot County were below the ALICE threshold; by 2021 5,659 households were below the ALICE threshold.

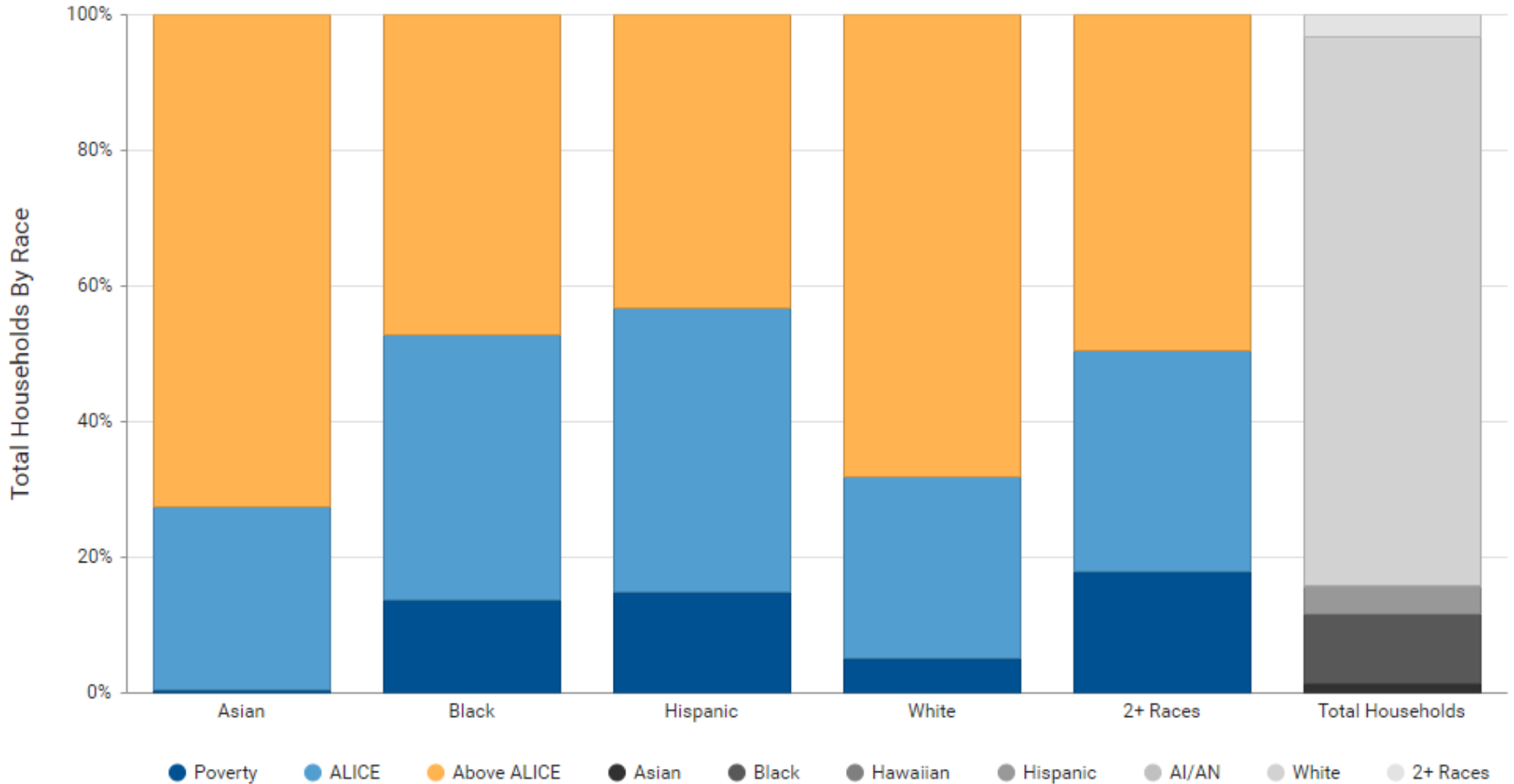
NUMBER OF HOUSEHOLDS

PERCENTAGE OF HOUSEHOLDS



Household Income Status by Race

Households by Race/Ethnicity, Talbot County, Maryland, 2021

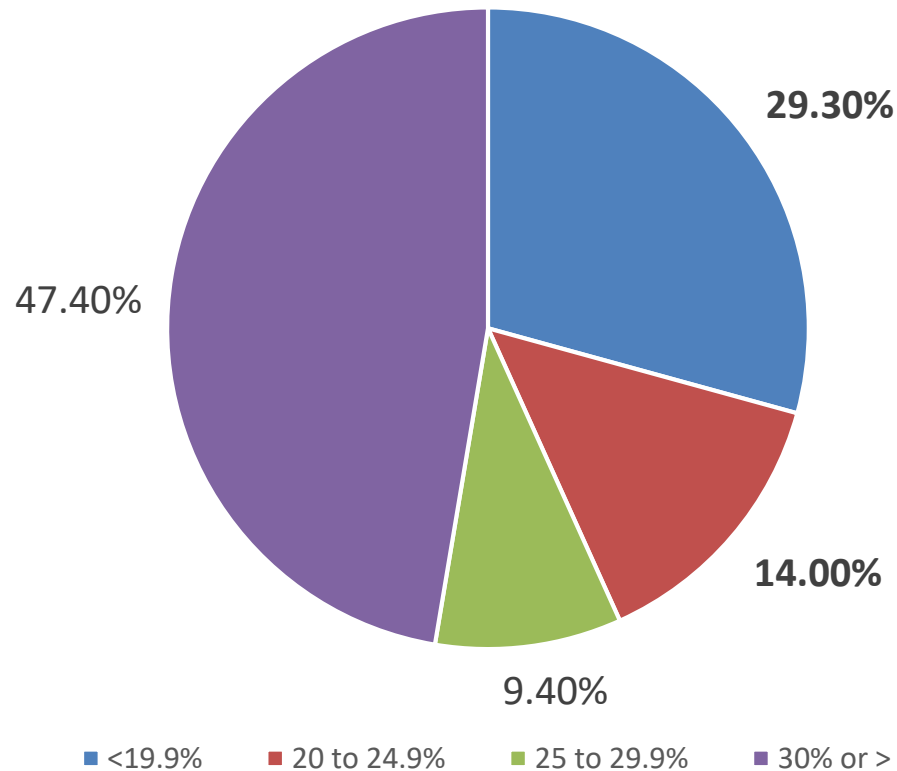


New
FY22

Housing

**AFFORDABLE
HOUSING**
FY 22 – Concern
FY 23 – Concern
FY 24 – Concern

% of Income Spent on Rental Housing

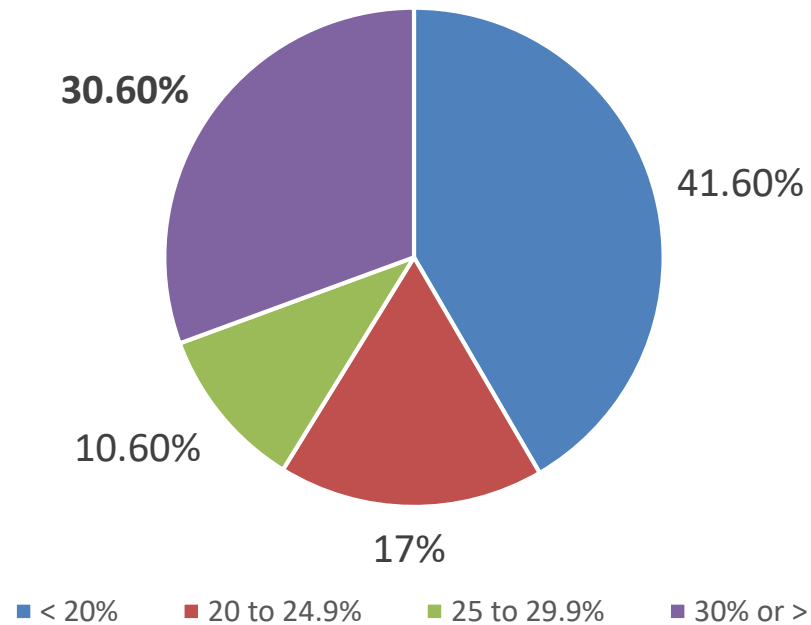


Source: US Census, 2021 ACS, 5-year Estimate, most recent

Note – This includes utility costs.

Housing

% of income spent on selected monthly owner costs



Source: US Census, 2021 ACS, 5-year estimate, most recent

Note – This includes all costs associated with owning a home – mortgage, second mortgage, insurance, utilities, etc.

Owner Occupied Homes by Race

Race	Number	% of Home Owners	% of Talbot Pop
American Indian	22	.2%	.7%
Asian	173	1.4%	1.3%
Black	859	7.2%	11.3%
Two or More Races	348	2.9%	5.4%
Other	66	.6%	
White	10,471	87.7%	80.4%
Hispanic	326	2.7%	7.1%

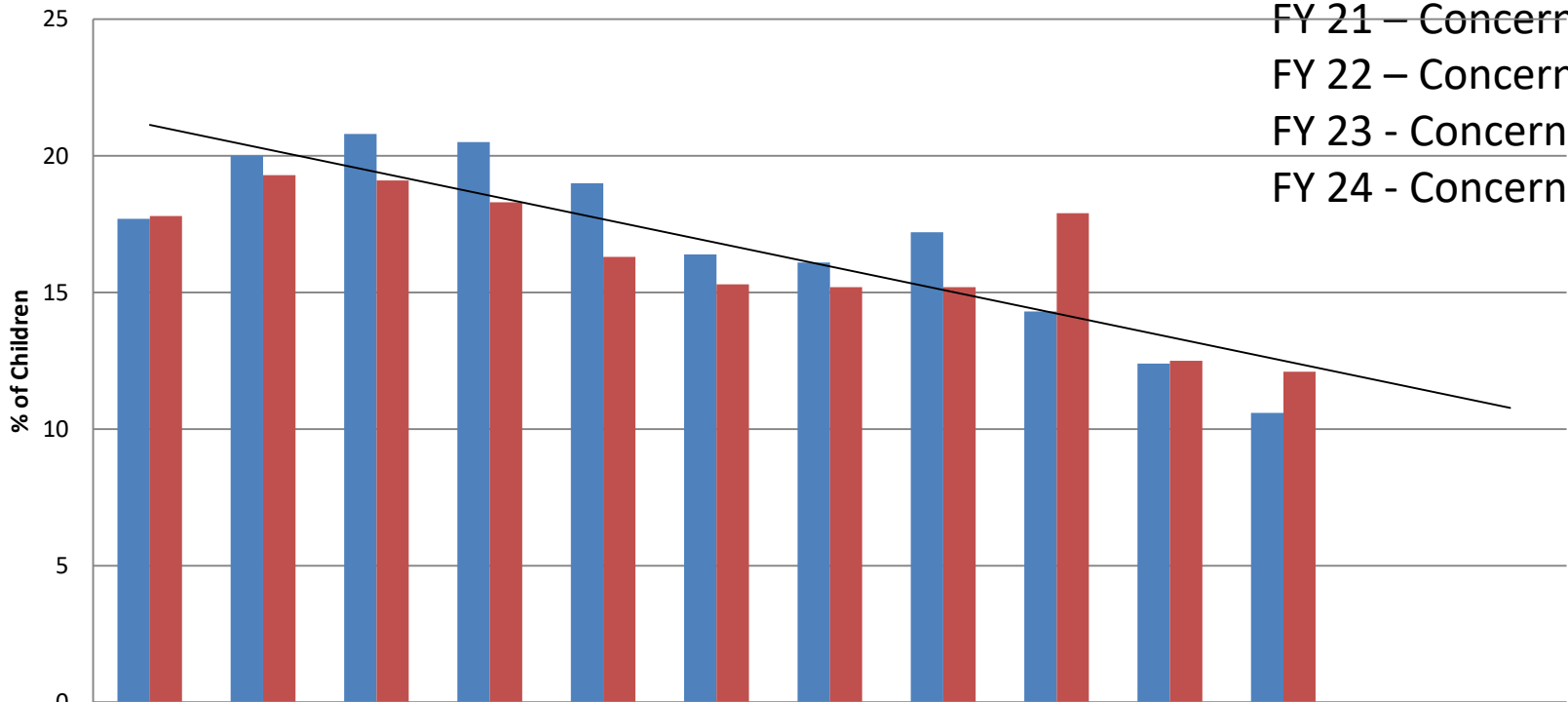
Total Owner-Occupied Homes = 11,939

Source: US Census, American Community Survey, 2021, 5-year Estimate

Indicator: Hunger

FY 13 – Concern
 FY 16 – Concern
 FY 17 – Concern
 FY 18 – Concern
 FY 19 – Concern
 FY 20 – Concern
 FY 21 – Concern
 FY 22 – Concern
 FY 23 - Concern
 FY 24 - Concern

Child Food Insecurity

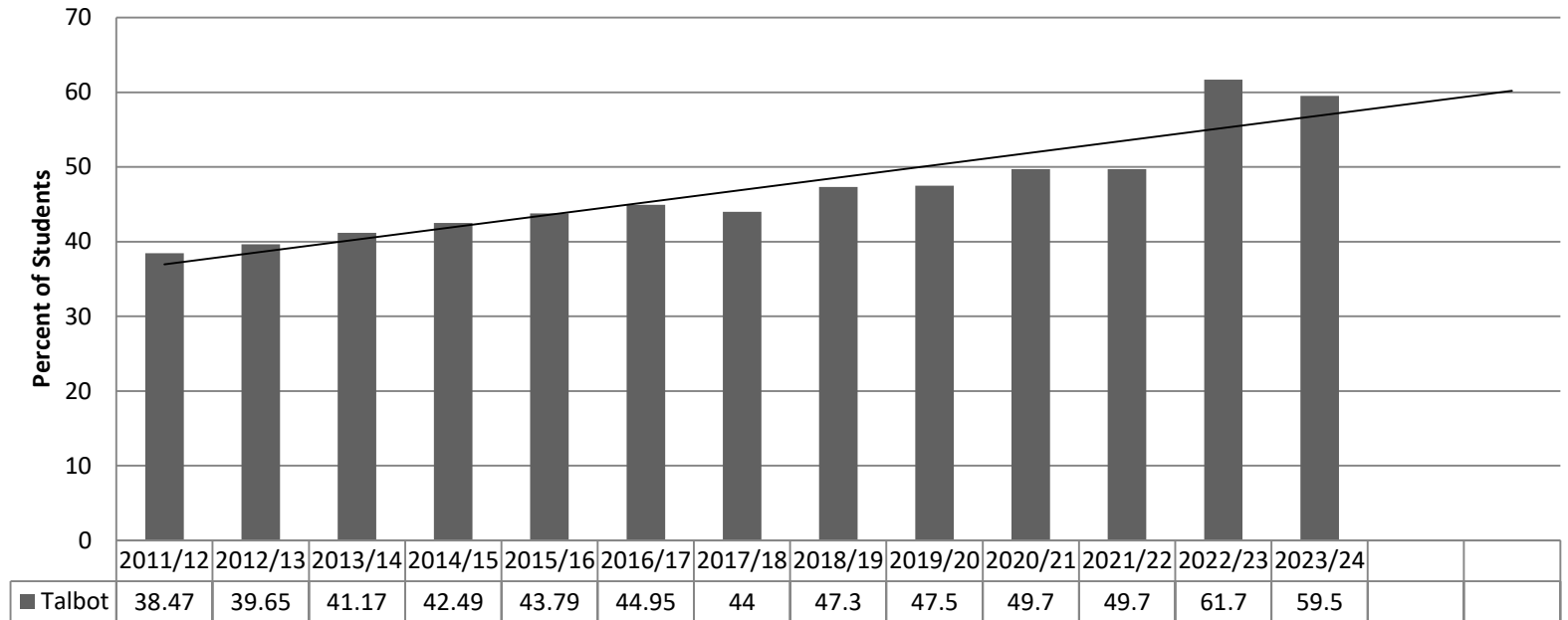


	2010	2012	2013	2014	2015	2016	2017	2018	2019	2020	2021		
■ Talbot	17.7	20	20.8	20.5	19	16.4	16.1	17.2	14.3	12.4	10.6		
■ Maryland	17.8	19.3	19.1	18.3	16.3	15.3	15.2	15.2	17.9	12.5	12.1		



Source: Feeding America
 Map the Meal Gap 2020

Free and Reduced Meals Talbot County Public Schools



Source: TCPS, 9/23

**FY 14 = 1,931 students FY 15 = 2,038 FY 16 = 2,074 FY 17 = 2,135 FY18 = 2,098
 FY 19 = 2,248 FY 21 = 2,231 FY 22 = 2,252 FY23 = 2,822 FY24= 2,712 – as of
 September 7, 2023. True count for the year not ready until Oct 31.**

Free Meals = 100% or less of Federal Poverty Guidelines
 Reduced Meals = 100-185% of Federal Poverty Guidelines

Hunger and Race

Race	Race as % of School System Population	Students receiving FaRMs
White	52%	34.9% (825/2359)
Black	15%	84.8% (582/686)
Hispanic	25%	89.9% (1037/1153)
Two or more	6%	63.4% (177/279)

Source: TCPS, 2/23 – not yet updated for 2023-24 school year

FARMS by School

School	FaRMs	School Enrollment	FaRMs % (Prior Yr)
Chapel Elem	122	348	43.8% (34.8%)
Easton Elem	729	1,101	77.2% (67.8%)
Easton High	512	1,207	57.3% (43.5%)
Easton Middle	431	747	70.4% (52.2%)
St. Michaels Elem	139	336	46.8% (42.6%)
St. Michaels Middle/High	149	450	49.1% (34.8%)
Tilghman Elem	36	96	58.3% (38.7%)
White Marsh Elem	134	288	55.9% (47.0%)

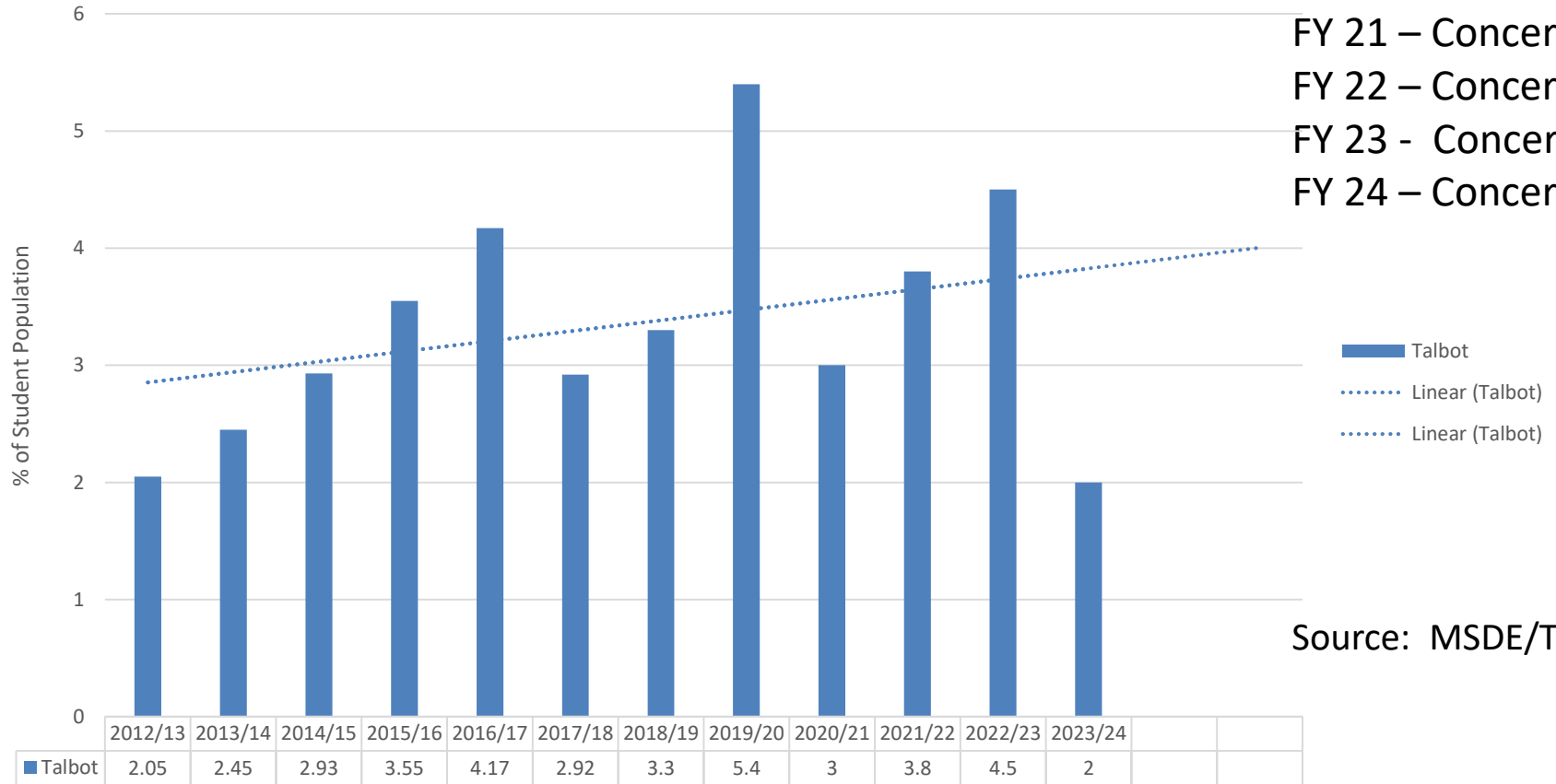
22/2023 SY = 5 schools >50% FARMS; 21-2022 SY = 2 schools >50% FARMS

TCPS, 2/23 – not yet updated for 2023/24 school year

Indicator: Homelessness

FY 13 – Monitor
 FY 16 – Concern
 FY 17 – Concern
 FY 18 – Concern
 FY 19 – Concern
 FY 20 – Concern
 FY 21 – Concern
 FY 22 – Concern
 FY 23 - Concern
 FY 24 – Concern

TCPS Homeless Students

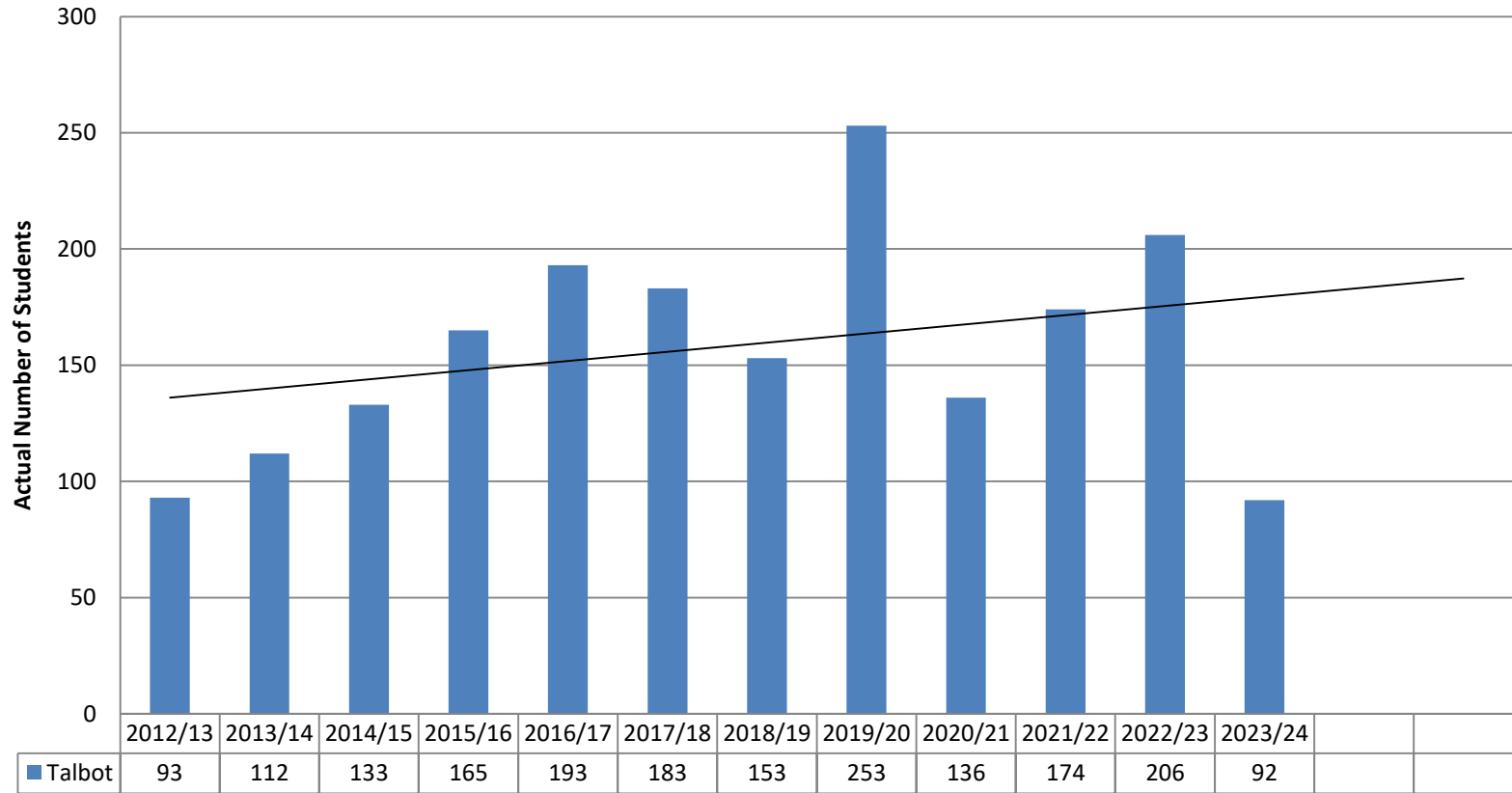


Source: MSDE/TCPS

FY 24 Note: Too early in school year for update.



TCPS Homeless Students



2019/20 – 5.4% of total TCPS population. Percent by race of total homeless Hispanic- 62%, AA-19%, White – 10%, Multi-race – 8%

2020/21 – 3% of total TCPS population. Percent by race of total homeless Hispanic- 59%, AA – 18%, White 19%, Multi-race – 4%

2021/22 – 3.8% of total TCPS population. Percent by race of total homeless Hispanic- 67.8%, AA-10.9%, White- 14.9%, Multi-race -6.3%

2023/24 – Preliminary data as of September 7, 2023

Source: TCPS, 9/23

Impact of Incarceration on Children and Families

FY21 – Concern
FY22 – Concern
FY23 – Concern
FY24 – Concern

- The total census at Talbot County Department of Corrections was 72 as of Sept 13, 2023. Currently at home on pre-trial supervision are 19 individuals. (Demographics next slide)
- 78 Talbot citizens (3 female, 75 male) are incarcerated in MD State Prisons. 73% are inmates of color. (MD Department of Public Safety and Correctional Services, Sept. 2023)
- 471 Talbot Citizens on Parole or Probation. 15% Female. 85% white, 43% People of Color. (MD Department of Public Safety and Correctional Services, Sept. 2023)
- According to BJS nationally (state and federal) 71% of male and 53% of female inmates are of color. (BJS – Prisoners in 2019)
- Nationally 47.4% of male and 57.7% of female inmates are parents. (BJS, 2021 report based on 2016 data – most recent)

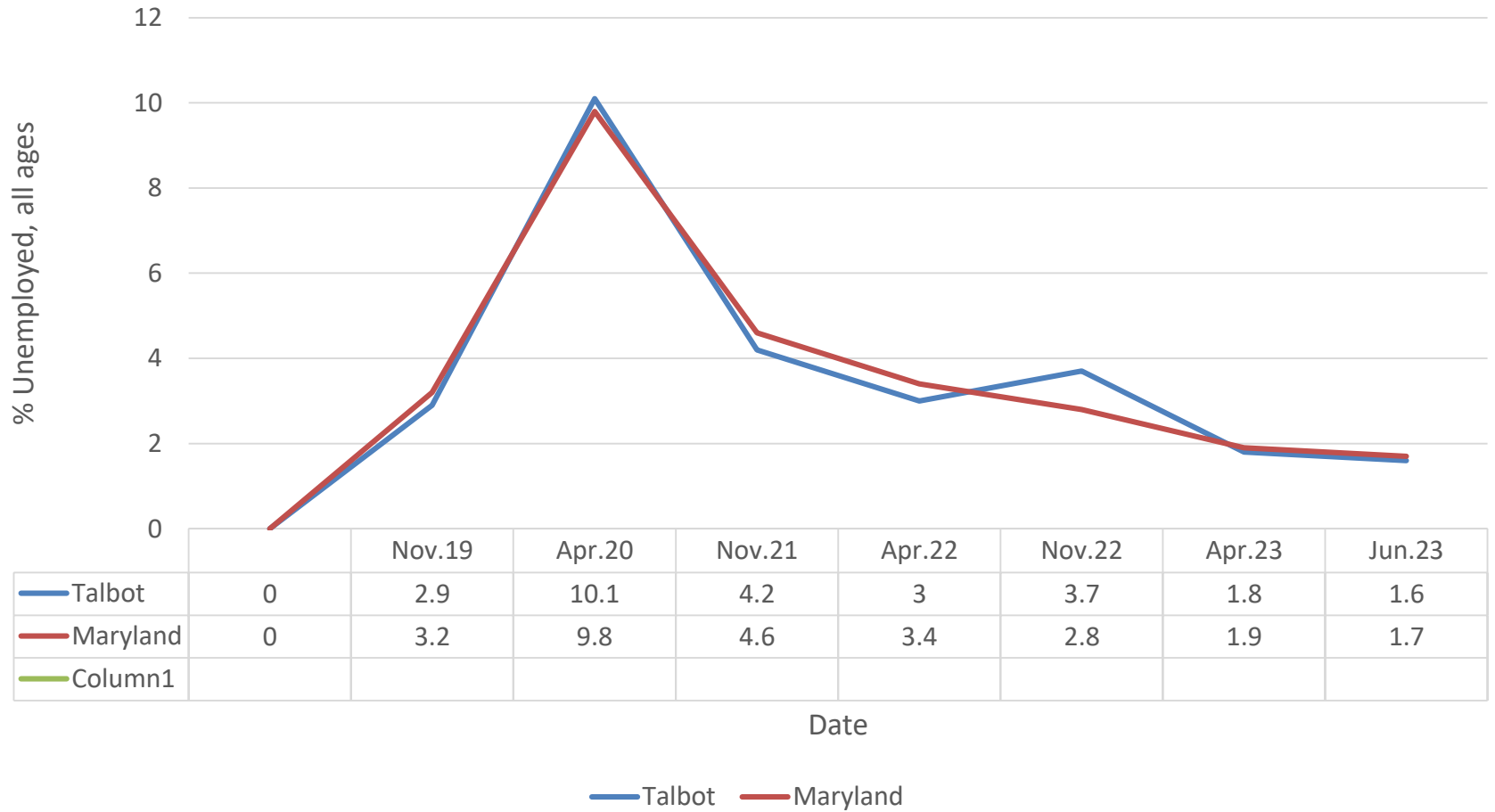
Talbot County Detention Center

In-house	Total Population with TCDC	Percent	vs. Total Talbot Population
Male	65	92%	47.5%
Female	7	8%	52.5%
White	25	37%	80.4%
Black/AA	35	55%	11.3%
Hispanic	12	8%	7.1%
Asian	0	0%	1.3%

50% (N=36) of current Inmates have children.

Sources: Talbot County Detention Center and US Census, ACS, 5 yr Estimate, 2021

Unemployment Through the Pandemic All Ages



Source: Maryland Monthly Labor Review – July 2023 is most recent available

Race Talbot	Unemployment Rate						
(All Ages)	2015	2016	2017	2018	2019	2020	2021
White	6.1%	5.5%	3.8%	2.8%	2.5%	2.4	3.2%
Black	8%	9.1%	7.1%	4.6%	7.9%	4.3	5.1%
Two or More	19.1%	9.3%	18%	12.1%	10.7%	9.5	7.9%
Latino	6.4%	1.0%	.9%	1.1%	1.2%	1.3	2.5%
Other	8.2%	8.4%	4.3%	3.8%	0%	0%	0%

Talbot County Census data from **2021** shows **10.8%** of individuals employed part-time lived below the poverty level, while only **1.1%** of individuals employed full-time were considered below poverty level. This trend is reflected across the country.

Source: US Census Bureau, ACS, 2021, 5 yr Estimates, Employment – most recent



RESULTS FOR CHILD WELL BEING

Healthy Children

Mental Health

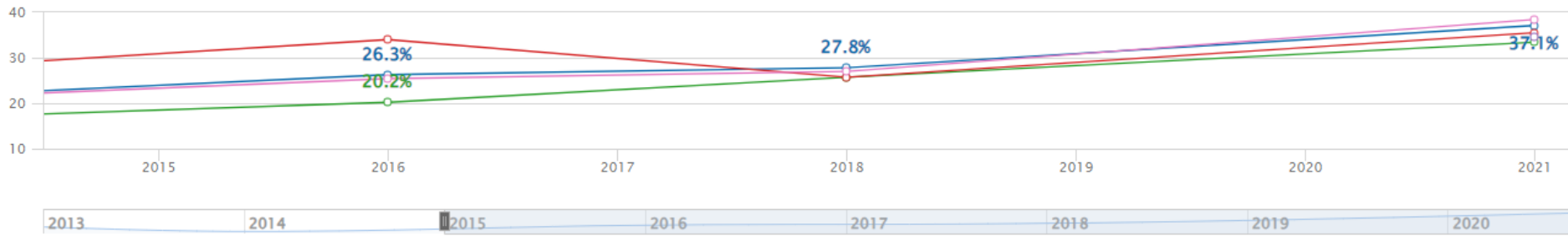
FY 13 -23 Concern
 FY 24 – Concern

Mental Health: % of Public School Students [in Grades 9 - 12] Reporting Depressive Episode

Current Value
37.1%

Line Bar Comparison

Data Source: YRBS



- [TACO] Mental Health: % of Public School Students [in Grades 9 - 12] Reporting Depressive Episode
- [TACO] Mental Health: % of Public School Students [in Grades 9 - 12] Reporting Depressive Episode- All other races, Non Hispanic
- [TACO] Mental Health: % of Public School Students [in Grades 9 - 12] Reporting Depressive Episode- Asian, Non Hispanic
- [TACO] Mental Health: % of Public School Students [in Grades 9 - 12] Reporting Depressive Episode- Black, Non Hispanic
- [TACO] Mental Health: % of Public School Students [in Grades 9 - 12] Reporting Depressive Episode- Hispanic/Latino
- [TACO] Mental Health: % of Public School Students [in Grades 9 - 12] Reporting Depressive Episode- Multiple Races, Non Hispanic
- [TACO] Mental Health: % of Public School Students [in Grades 9 - 12] Reporting Depressive Episode- Native American, Non Hispanic
- [TACO] Mental Health: % of Public School Students [in Grades 9 - 12] Reporting Depressive Episode- White, Non Hispanic

Source – YRBS 2021

The Question asked - During the past 12 months, did you ever feel so sad or hopeless almost every day for two weeks or more in a row that you stopped doing some usual activities?

School-Based MH Services

School Year	# of NEW Students Referred to School Based Mental Health	Notes
2012-13	206	
2013-14	188	
2014-15	177	
2015-16	183	
2016-17	178	
2017-18	247	
2018-19	283	
2019-20	248	3.5 months virtual school
2020-21	210	Hybrid school year
2021-22	426	
2022-23	312	

Source: TCPS, Rob Schmidt, MH Coordinator, June 2023

Risk Assessment Data

Talbot County Public Schools

	2017/18	2018/19	2019/20 (COVID)	2020/21 (COVID)	2021/22	2022/23
Child & Adolescent Risk Evaluation2 (CARE2) Threat Assessment	56	87	49	22	98	95
Risk Identification Suicide Kit2 (RISK2) Suicide Risk Assessment	154	209	170	60	166	148
			<i>School virtual 3.1 months</i>	<i>School virtual or part-time 4 months at start of yr</i>	63 substance use referrals made.	78 substance use referrals.

YRBS 2021 - % of students who ever used heroin

	2013	2014	2016	2018	2021	Difference (2018- 2021)	Trend (2013- 2021)
Total	8.0%	6.3%	4.0%	4.3%	4.0%	No Change	Decrease
RACE/ETHNICITY							
Asian	-	-	-	-	-	~	~
Black	9.6%	7.1%	-	5.9%	-	-	Decrease
Latine	20.4%	15.0%	10.1%	3.4%	4.3%	No Change	Decrease
Multi	-	-	-	-	-	-	~
White	4.1%	3.9%	2.3%	3.1%	3.0%	No Change	No Change
Other	14.3%	-	-	-	-	-	~
AGE							
>15 & 15	8.9%	5.9%	3.1%	4.9%	3.2%	No Change	Decrease
16 or 17	6.7%	6.4%	4.2%	3.9%	4.1%	No Change	No Change
18 or <	10.2%	-	11.4%	-	-	-	No Change

YRBS 2021 - %of students who currently drank alcohol (at least 1 drink of alcohol, on at least 1 day during the 30 days before the survey)

	2013	2014	2016	2018	2021	Change (2018-2021)	Trend (2013-2021)
Total	30.7%	27.7%	32.1%	30.5%	28.8%	No Change	No Change
RACE/ETHNICITY							
Black	32.9%	20.1%	26.0%	30.3%	20.7%	No Change	No Change
Latine	28.2%	18.5%	27.4%	25.0%	18.2%	No Change	No Change
Multi	36.8%	37.0%	35.1%	34.0%	28.4%	No Change	No Change
White	29.8%	29.8%	35.2%	31.8%	33.8%	No Change	No Change
Other	42.9%	-	-	-	-	-	~
AGE							
>15 & 15	25.2%	20.1%	22.9%	24.6%	18.1%	Decrease	No Change
16 or 17	30.6%	35.9%	40.6%	38.7%	38.6%	No Change	No Change
18 or <	58.4%	31.2%	41.4%	25.2%	36.7%	No Change	No Change

New FY21

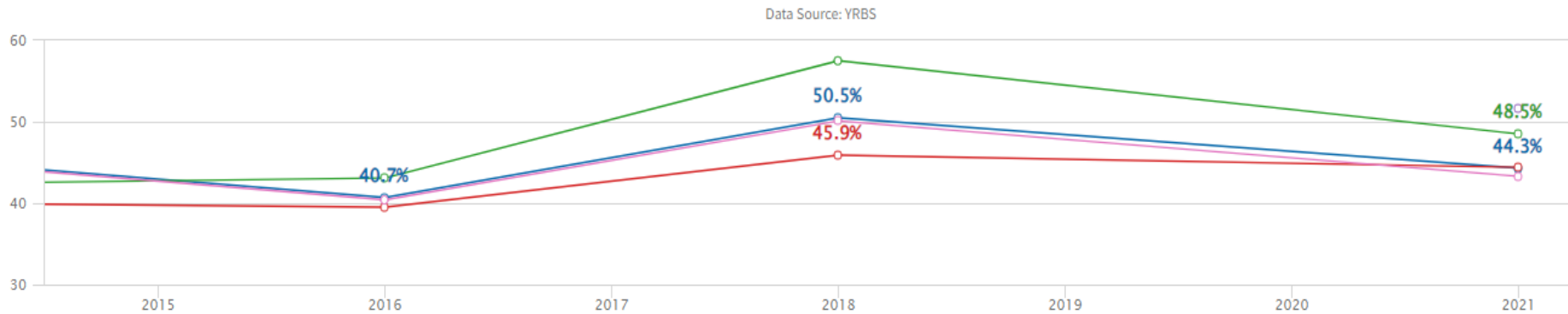
Indicator: Electronic Vaping

FY 21 – Concern
FY 22 – Concern
FY 23 – Concern
FY 24 – Concern

Substance Use: % of Public School Students [in Grades 9 - 12] Reporting EVP use (Vaping)

Current Value
44.3%

Line Bar Comparison



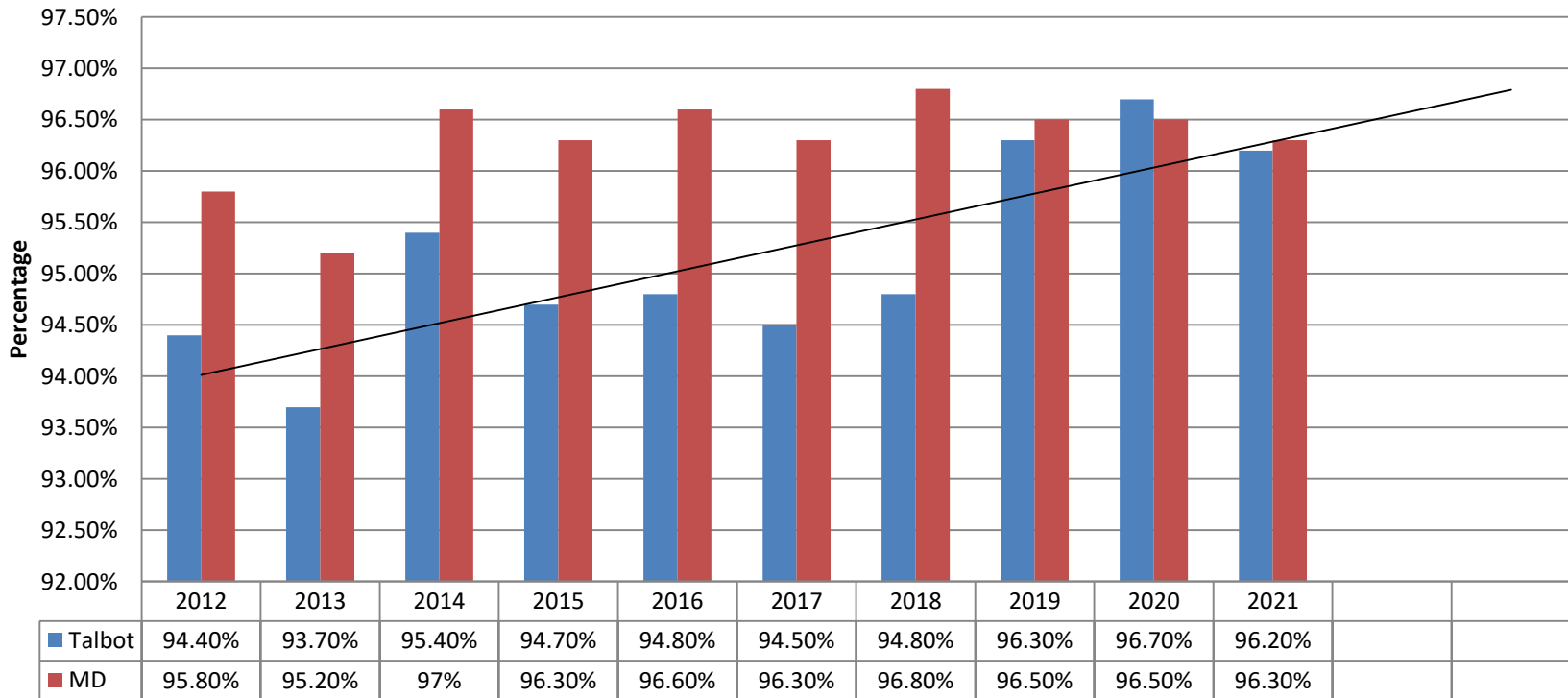
- [TACO] Substance Use: % of Public School Students [in Grades 9 - 12] Reporting EVP use (Vaping)
- [TACO] Substance Use [Grades 9 - 12] Reporting EVP use (Vaping)- Asian, Non Hispanic
- [TACO] Substance Use [Grades 9 - 12] Reporting EVP use (Vaping)- Black, Non Hispanic
- [TACO] Substance Use [Grades 9 - 12] Reporting EVP use (Vaping)- Hispanic/Latino
- [TACO] Substance Use [Grades 9 - 12] Reporting EVP use (Vaping)- Multiple Races, Non Hispanic
- [TACO] Substance Use [Grades 9 - 12] Reporting EVP use (Vaping)- Native American, Non Hispanic
- [TACO] Substance Use [Grades 9 - 12] Reporting EVP use (Vaping)- White, Non Hispanic

Data Source: YRBS, Have you ever used an electronic vape product?

Indicator: Health Insurance Coverage

FY 13 – Positive Progress
 FY 16 – Positive Progress
 FY 17 – Positive Progress
 FY 18 – Positive Progress
 FY 23/24 – Positive Progress but Concern about access for all (need disaggregated data)

Health Insurance Children, ages 0 to 18

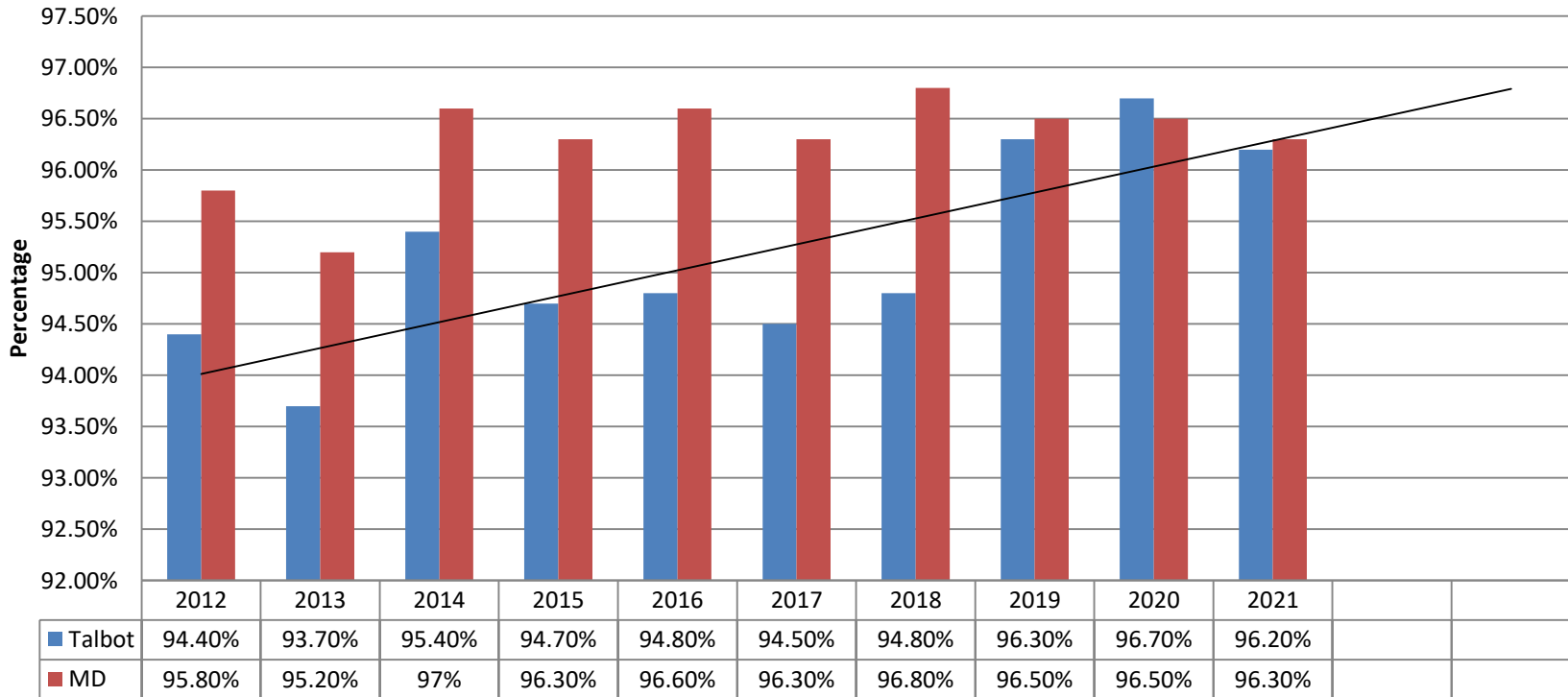


Data Source: US Census, ACS, 2021 Most recent

Indicator: Health Insurance Coverage

FY 13 – Positive Progress
 FY 16 – Positive Progress
 FY 17 – Positive Progress
 FY 18 – Positive Progress
 FY 23/23 – Positive Progress
 but Concern about access for all (need disaggregated data)

Health Insurance
 Children, ages 0 to 18



Data Source: US Census, ACS, 2021 Most recent

Indicator: Immunizations

FY 13 – Positive Progress

FY 16 – Positive Progress

FY 17- Positive Progress

FY 18 – Monitor

GOC is working on data development.

Data not available on county level.

FY 23 – Monitor

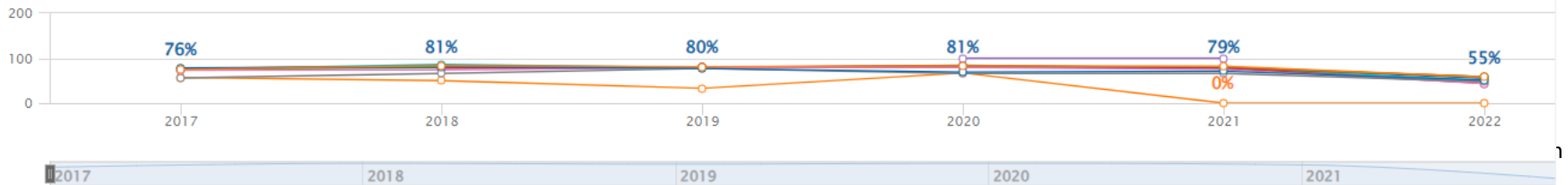
FY 24 – Monitor

Immunizations: Percent of Children 0-2 Years Old with Immunet Records who Had a Completed 7 Vaccine Series

Current Value
55%

Line Bar Comparison

Data Source: Maryland Department of Health



- [TACO] Immunizations: Percent of Children 0-2 Years Old with Immunet Records who Had a Completed 7 Vaccine Series
- [TACO] Immunizations: Percent of Children 0-2 Years Old with Immunet Records who Had a Completed 7 Vaccine Series- American Indian or Alaska Native
- [TACO] Immunizations: Percent of Children 0-2 Years Old with Immunet Records who Had a Completed 7 Vaccine Series- Asian
- [TACO] Immunizations: Percent of Children 0-2 Years Old with Immunet Records who Had a Completed 7 Vaccine Series- Black or African American
- [TACO] Immunizations: Percent of Children 0-2 Years Old with Immunet Records who Had a Completed 7 Vaccine Series- Hispanic or Latino
- [TACO] Immunizations: Percent of Children 0-2 Years Old with Immunet Records who Had a Completed 7 Vaccine Series- Native Hawaiian or Other Pacific Islander
- [TACO] Immunizations: Percent of Children 0-2 Years Old with Immunet Records who Had a Completed 7 Vaccine Series- Not Hispanic or Latino
- [TACO] Immunizations: Percent of Children 0-2 Years Old with Immunet Records who Had a Completed 7 Vaccine Series- Other Race
- [TACO] Immunizations: Percent of Children 0-2 Years Old with Immunet Records who Had a Completed 7 Vaccine Series- Unknown Ethnicity

▲ 1/2 ▼

Source: GOC

Indicator: Obesity

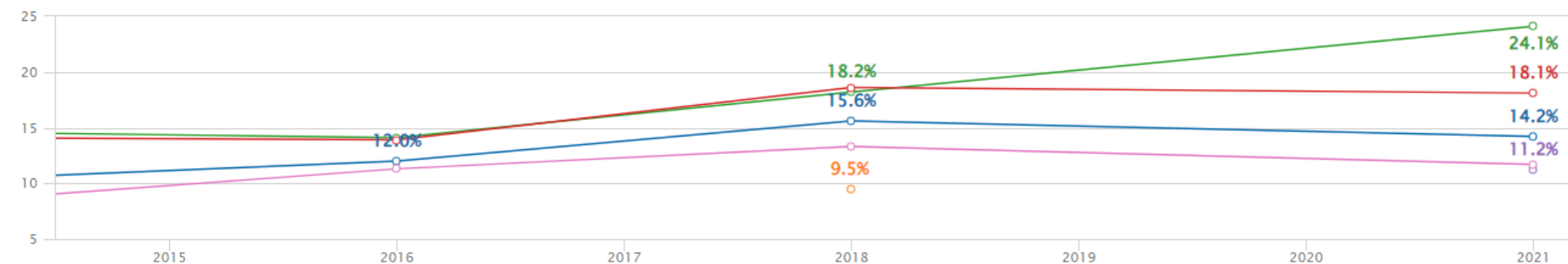
FY 13 – Concern
 FY 16 – Monitor
 FY 17 – Monitor
 FY 18 – Monitor
 FY 23 – Monitor
 FY24 – Monitor

Current Value
 14.2%

Obesity: % of Public School Students in Grades 9-12 Who Are Obese

Line Bar Comparison

Data Source: YRBS



2013 2014 2015 2016 2017 2018 2019 2020

- o- [TACO] Obesity: % of Public School Students in Grades 9-12 Who Are Obese
- o- [TACO] Obesity: % of Public School Students in Grades 9-12 Who Are Obese- All other races, Non Hispanic
- o- [TACO] Obesity: % of Public School Students in Grades 9-12 Who Are Obese- Asian, Non Hispanic
- o- [TACO] Obesity: % of Public School Students in Grades 9-12 Who Are Obese- Black, Non Hispanic
- o- [TACO] Obesity: % of Public School Students in Grades 9-12 Who Are Obese- Hispanic/Latino
- o- [TACO] Obesity: % of Public School Students in Grades 9-12 Who Are Obese- Multiple Races, Non Hispanic
- o- [TACO] Obesity: % of Public School Students in Grades 9-12 Who Are Obese- Native American, Non Hispanic
- o- [TACO] Obesity: % of Public School Students in Grades 9-12 Who Are Obese- White, Non Hispanic

Clear

Data Source: YRBS, QNOBESE
 Calculated from Self Report of Height and Weight

New FY21

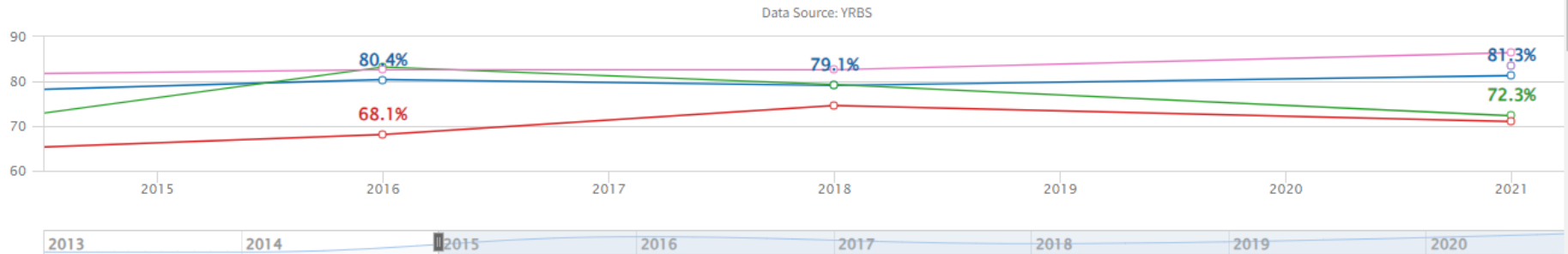
Physical Activity

FY 23 – Monitor
FY 24 - Monitor

Physical Health: % of Public School Students [in Grades 9 - 12] Reporting Physical Activity for 60 Minutes in Last 7 Days

Current Value
81.3%

Line Bar Comparison



- [TACO] Physical Health: % of Public School Students [in Grades 9 - 12] Reporting Physical Activity for 60 Minutes in Last 7 Days
- [TACO] Physical Health: [Grades 9 - 12] Reporting Physical Activity for 60 Minutes in Last 7 Days- All other races, Non Hispanic
- [TACO] Physical Health: [Grades 9 - 12] Reporting Physical Activity for 60 Minutes in Last 7 Days- Asian, Non Hispanic
- [TACO] Physical Health: [Grades 9 - 12] Reporting Physical Activity for 60 Minutes in Last 7 Days- Black, Non Hispanic
- [TACO] Physical Health: [Grades 9 - 12] Reporting Physical Activity for 60 Minutes in Last 7 Days- Hispanic/Latino
- [TACO] Physical Health: [Grades 9 - 12] Reporting Physical Activity for 60 Minutes in Last 7 Days- Multiple Races, Non Hispanic
- [TACO] Physical Health: [Grades 9 - 12] Reporting Physical Activity for 60 Minutes in Last 7 Days- Native American, Non Hispanic
- [TACO] Physical Health: [Grades 9 - 12] Reporting Physical Activity for 60 Minutes in Last 7 Days- White, Non Hispanic

Source: YRBS – QNPA7DAY

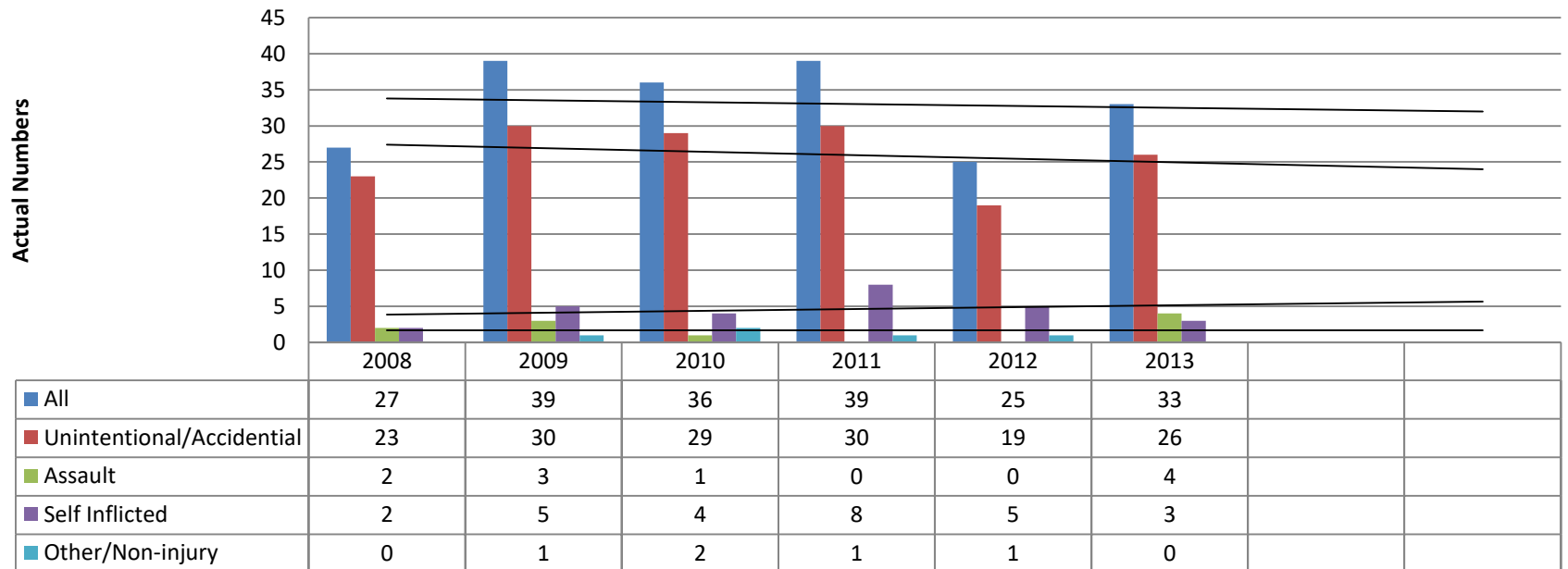
Indicator: Hospitalizations

FY 13 – Positive Progress

FY 16 – Monitor

FY 18 – Monitor

Talbot Youth Hospitalizations Aged 0 -21



Data not available when there are fewer than 11 hospitalizations.

Data Sources: MD HSCRC, www.goc.maryland.gov

Data pulled from hospitalization codes





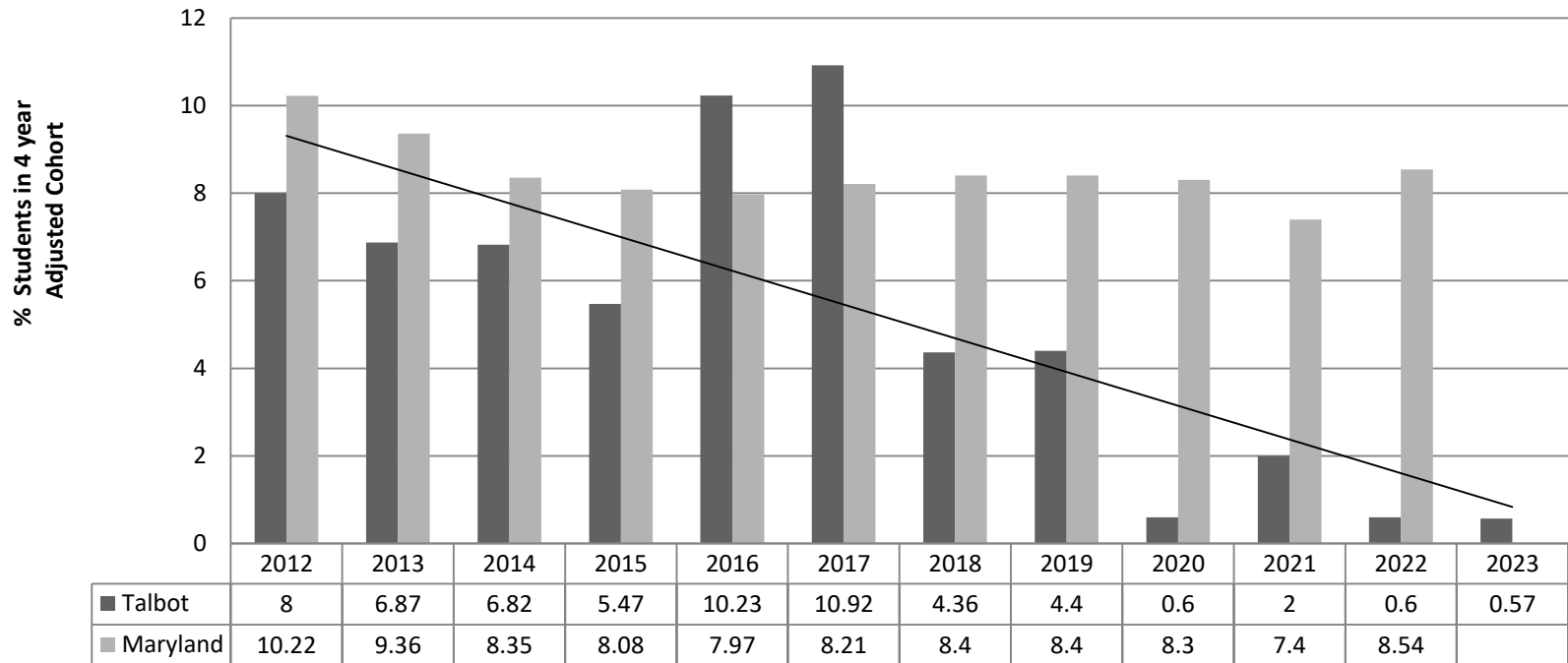
RESULTS FOR CHILD WELL BEING

Youth Will Complete School

Indicator: High School Dropout Rate

- FY 16 – Positive Progress
- FY 17 – Concern
- FY 18 – Concern
- FY 19 – Monitor
- FY 20 – Monitor
- FY 21 – Monitor
- FY 22 – Monitor
- FY 23 - Monitor
- FY 24 – Positive Progress

High School Drop Out Rate



Source: TCPS, 9/23 – Preliminary data. Maryland not available yet.

High School Drop Out Data

Graduation Year	# of Dropouts	# Students in Class/Cohort	Dropout Rate
2013	25	364	6.87%
2014	24	352	6.82%
2015	17	311	5.47%
2016	36	352	10.23%
2017	39	357	10.92%
2018	16	344	4.65%
2019	1	382	.3%
2020	2	356	.6%
2021	7	351	2.0%
2022	2	336	.6%
2023	2	348	.57%

Source: MSDE and Unofficial data provided by TCPS, 10/23

High School Dropout Rate

Talbot Dropout Data by Subgroup							
Subgroup	2017	2018	2019	2020	2021	2022	2023
Hispanic/ Latino	35.1% (20)	10.9% (5)	20.7% (12)	1.4%(1)	7.4% (5)	3.2% (2)	0%
White			1% (2)	0% (0)	0% (0)	0% (0)	.51% (1)
Two or +			0%	6.7% (1)	6.7% (1)	0% (0)	0%
Black			1.8% (1)	1.5% (1)	2.1% (1)	0% (0)	2% (1)
Limited English Proficient	63.3% (19)	45.5% (5)	35.3% (12)	3.8% (1)	18.5% (5)	6.5% (2)	0%
FARMS	19.4% (25)	8.9% (10)	9.2% (12)	1.1% (3)	3% (4)	.7% (1)	1.11% (2)

Source: MSDE. 2022 Unofficial data provided by TCPS, 9/23

4-Year Cohort Graduation Rates

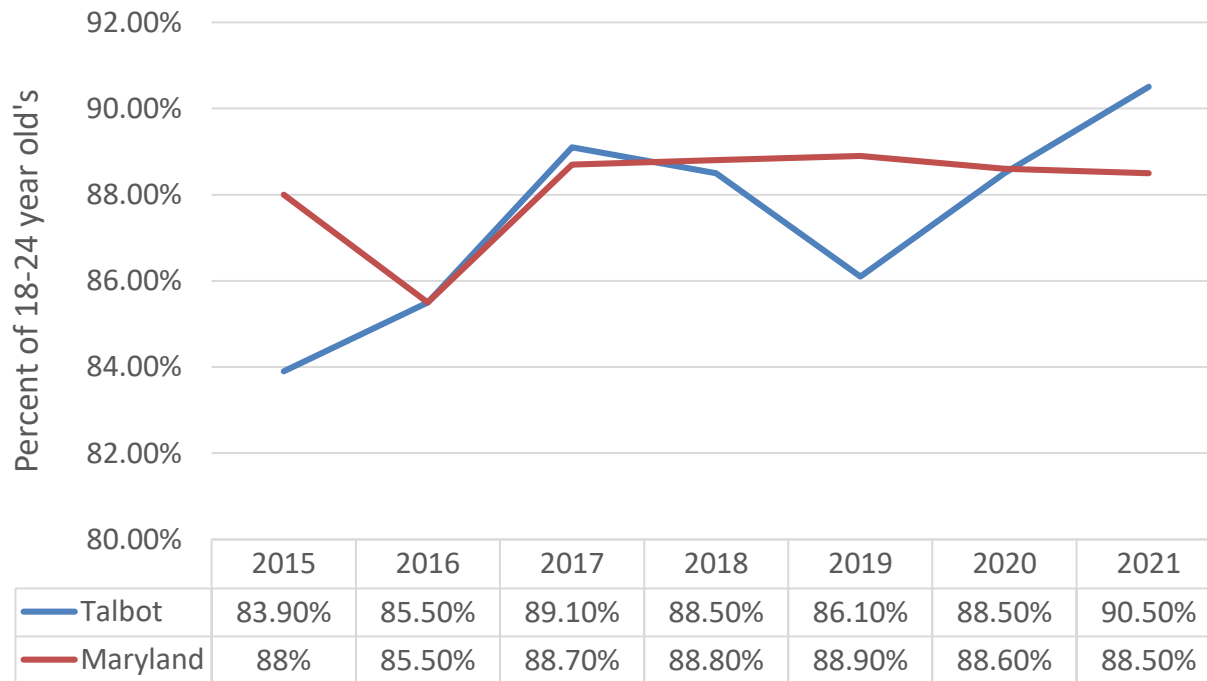
	2023	2022	2021	2020	2019	2018	2017
Talbot County	97.7%	97.3%	96.3%	95.5%	93.9%	93.9%	87.11%
Black	95.92%	95.4%	93.6%	95.5%	94.7%	84.91%	87.23%
Hispanic /Latino	95.95%	97.3%	91.2%	86%	75.9%	84.78%	61.40%
White	98%	99%	98.6%	97.5%	97.6%	>95%	92.95%
FARMS	96.65%	94.3%	94.7%	92.1%	87%	88.39%	77.52%



Source: Talbot County Public Schools, Preliminary 2023, 9/23

Educational Attainment

18-24 y/o Completed HS
 (Includes Equivalency)

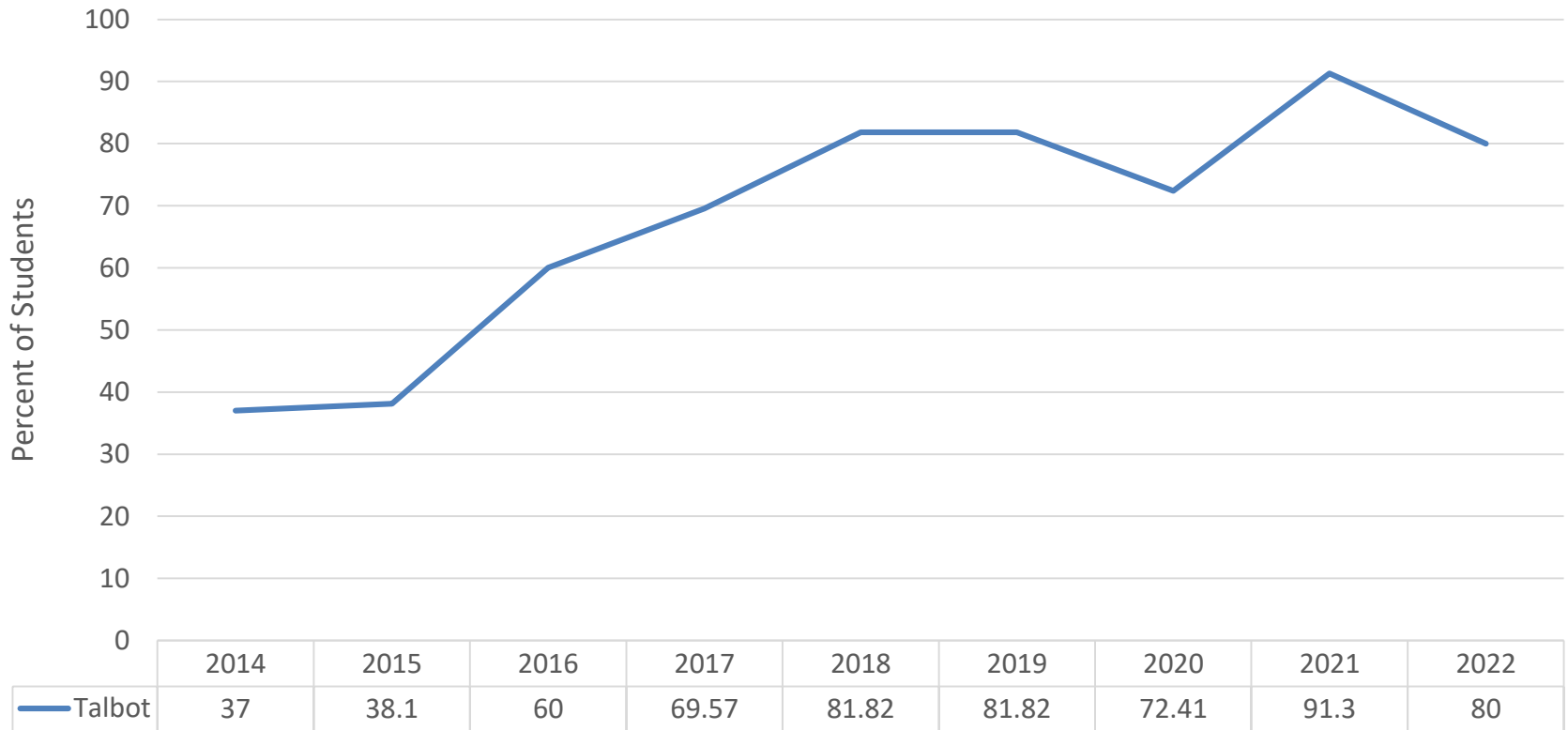


Source: US Census, ACS, most recent 2021

Indicator: HS Completion of Students with Disabilities

FY 13 – Positive Progress
 FY 16- Positive Progress
 FY 17- Positive Progress
 FY 18 - Positive Progress

Program Completion of Students with Disabilities
 % of Students with Disabilities who Graduated with Diploma



Source: MSDE, most recent.



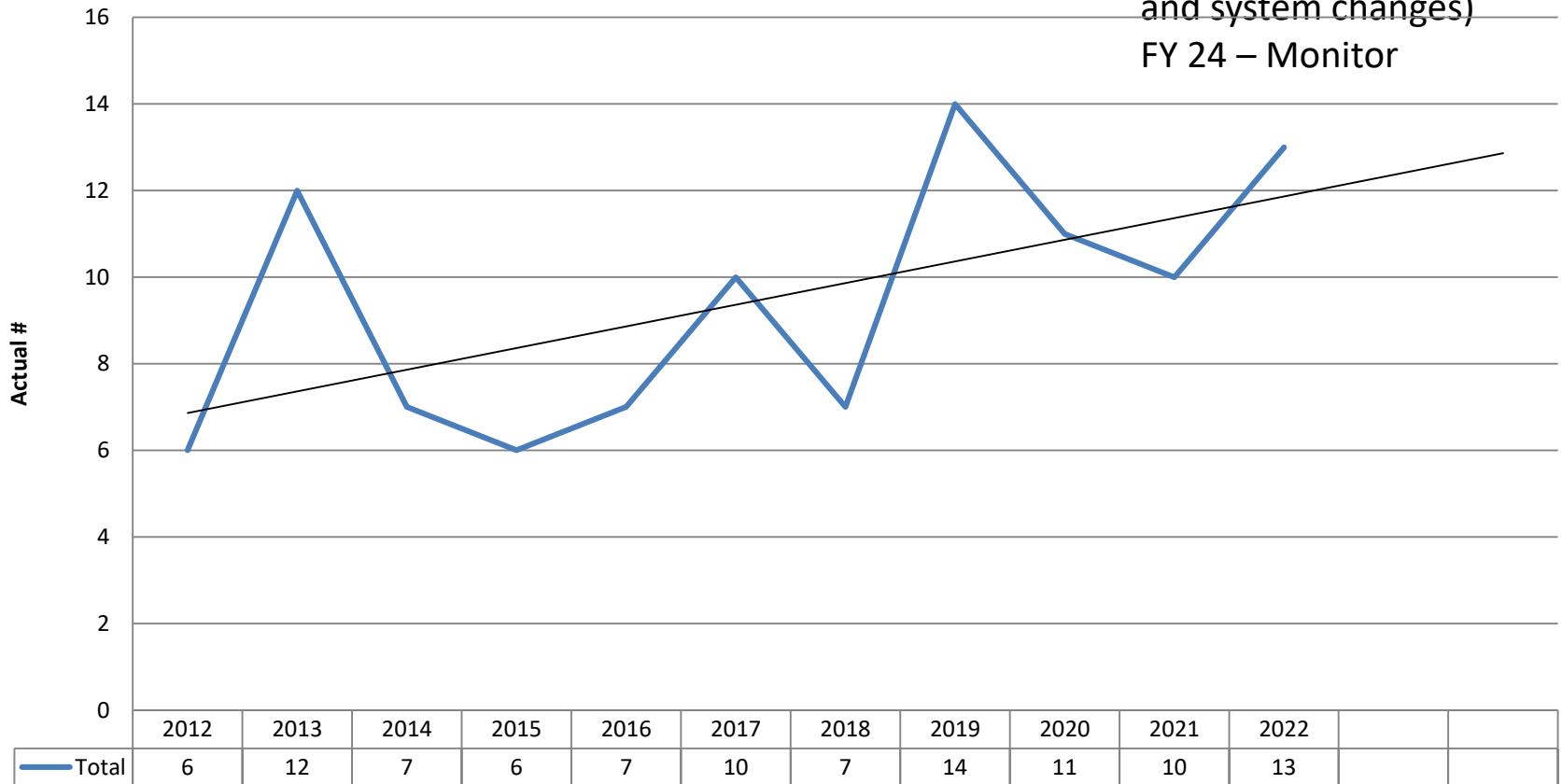
RESULTS FOR CHILD WELL BEING

Youth Have Opportunities for
Employment and Career Readiness

Indicator: Juvenile Felony Offenses

FY 13 – Monitor
 FY 16 – Positive Progress
 FY 17 – Positive Progress
 FY 18 – Positive Progress
 FY 22 – Monitor (due to input from Wm Johnson / DJS on possible legislative changes.)
 FY 23 – Monitor (due to data and system changes)
 FY 24 – Monitor

Juvenile Violent Felony Complaints



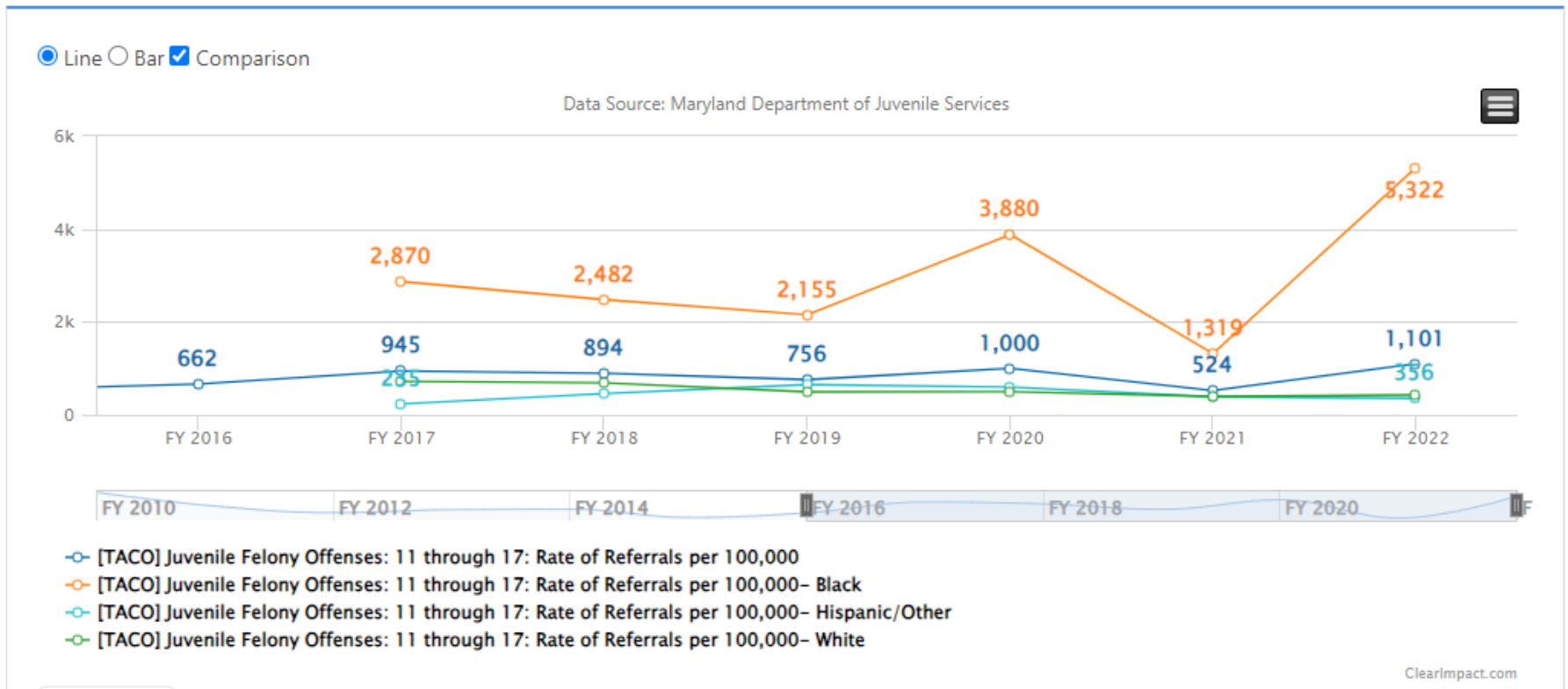
Source: DJS Annual Statistical Report, 2022 is most recent data

Juvenile Felony: Disaggregated Data

FY 24 - Monitor

Juvenile Felony Offenses: 11 through 17: Rate of Referrals per 100,000

1,101 FY 2022



Source: GOCCP - DJS

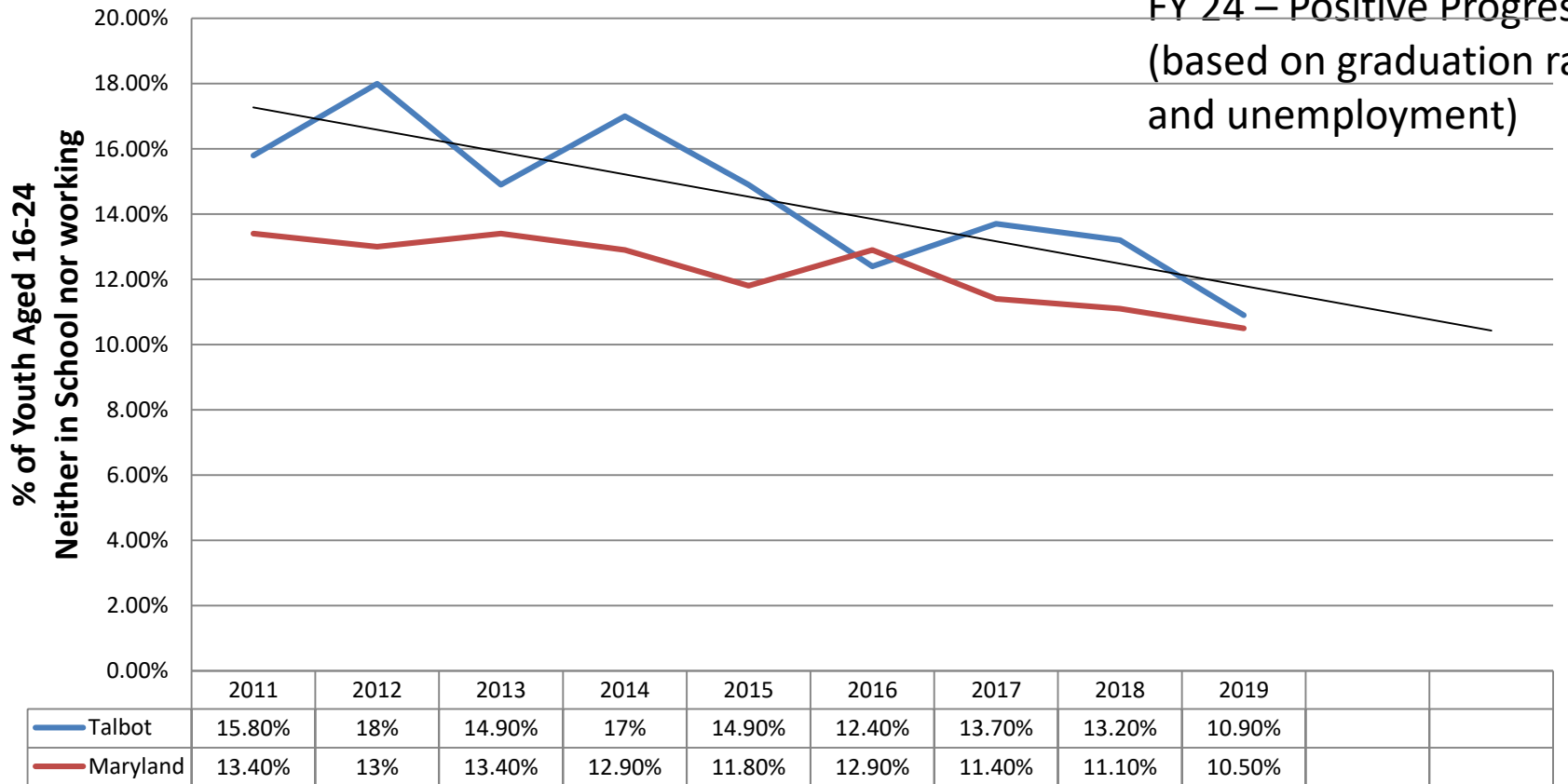
Disconnect Youth

Age 16-24 Neither in school nor working

- FY 17 – Concern
- FY 18 – Concern
- FY 19 – Concern
- FY 20
- FY 21 – Monitor
- FY 22 – Monitor
- FY 23 – Monitor
- FY 24 – Positive Progress

(based on graduation rates and unemployment)

Disconnected Youth

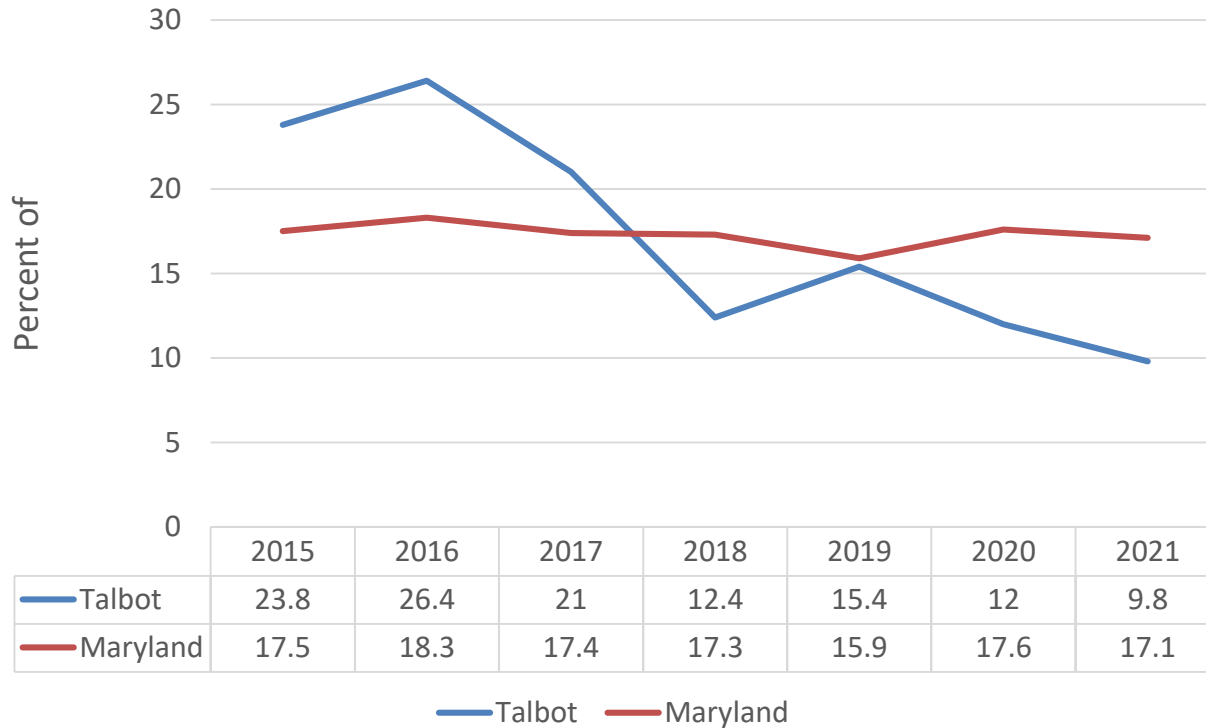


Opportunityindex.org 2019 is most recent data.

Youth Employment

FY 17 – Monitor
 FY 18 – Monitor
 FY 19 – Monitor
 FY 20 – Monitor
 FY 21 – Monitor
 FY 22 – Monitor
 FY 23 - Monitor
 FY24 - Positive Progress

Unemployed 16-19 Year Old's in Labor Force



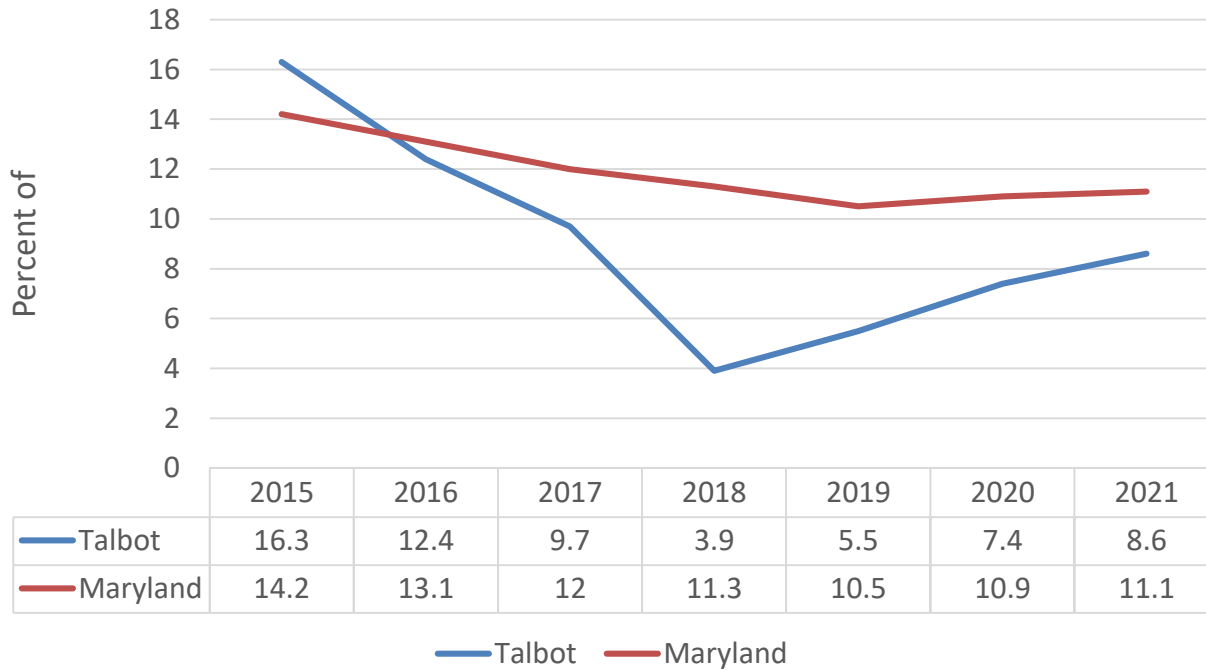
Actual #	'15	'16	'17	'18	'19	'20	'21
Unemployed	373	416	325	180	258	195	155

Source: ACS, US Census, most recent 2021

Youth Employment

- FY 17 – Monitor
- FY 18 – Monitor
- FY 19 – Monitor
- FY 20 – Monitor
- FY 21 – Monitor
- FY 22 – Monitor
- FY 23 – Monitor
- FY 24 – Positive Progress

Unemployed 20-24 Year Old's in Labor Force



Actual #	2015	2016	2017	2018	2019	2020	2021
Unemployed	295	222	165	62	84	109	121

Source: ACS, US Census, most recent 2021

Indicator: High School Program Completion

FY16-17 – More Information
 FY18 – More Info Needed
 FY19 – Monitor
 FY20 – Monitor
 FY23 – Monitor
 FY 24 – Monitor

Completion Category:	2017	2018	2019	2020	2021	2022
a. Univ MD Course Requirements	53.2%	83	86 (25.7%)	114 (30.2%)	98 (29%)	66 (19.8%)
b. Career & Tech Ed Program Requirements	23.6%	98	75 (22.5%)	79 (20.9%)	45 (13.3%)	78 (23.4%)
c. Both Univ & Career / Tech Requirements	19.4%	91	89 (26.6%)	69 (18.3%)	110 (32.5%)	81 (24.3%)
d. Rigorous High School Program Indicator	33.9%	105	114 (34.1%)	131 (34.7%)	108 (32%)	17 (<5%)
e. At least one of the above categories	78.8%	1	-	-	-	-



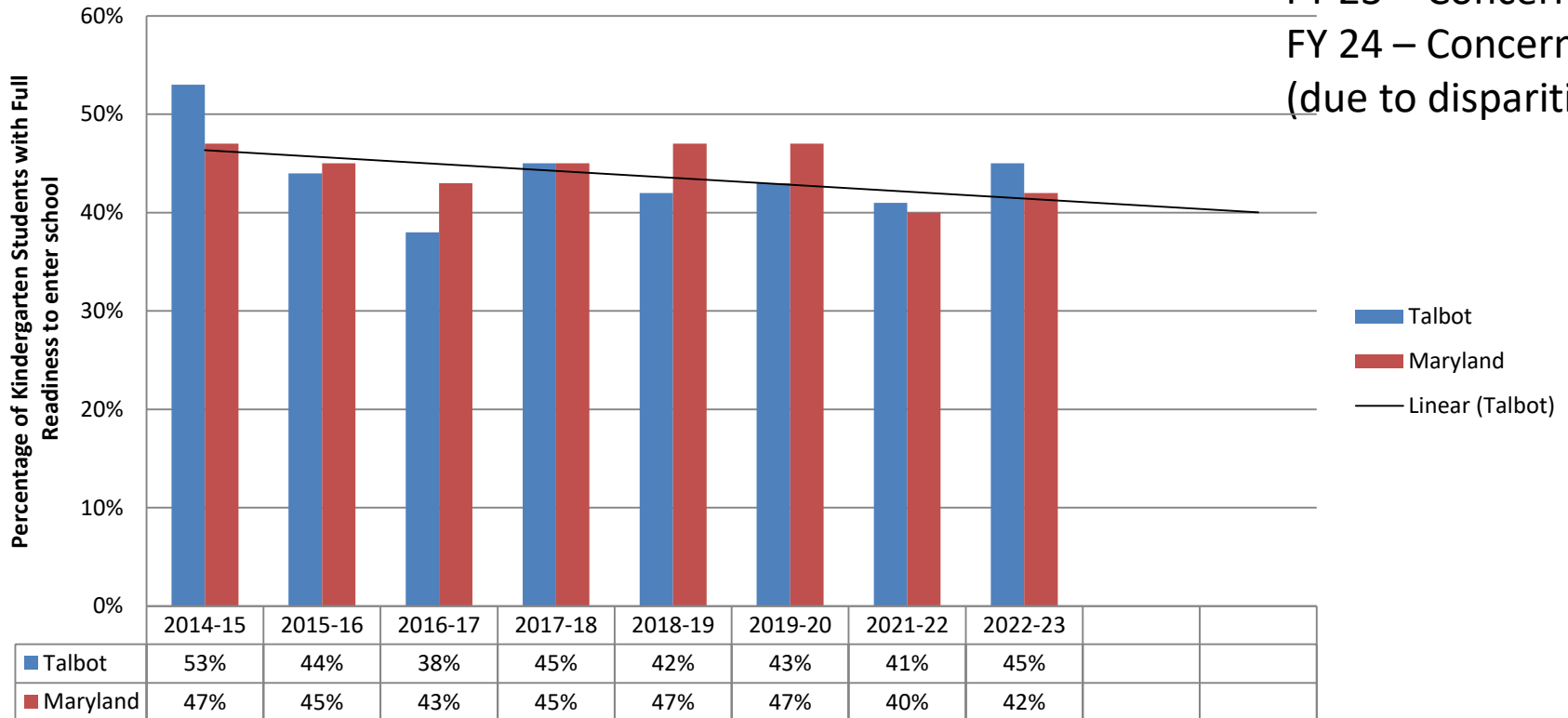
RESULTS FOR CHILD WELL BEING

Children Enter School
Ready to Learn

Indicator: Kindergarten Assessment

FY 16 – Baseline
 FY 18 – Concern
 FY 19 – Concern
 FY 20 – Monitor
 FY 21 – Monitor
 FY 22 – Concern
 FY 23 – Concern
 FY 24 – Concern
 (due to disparities)

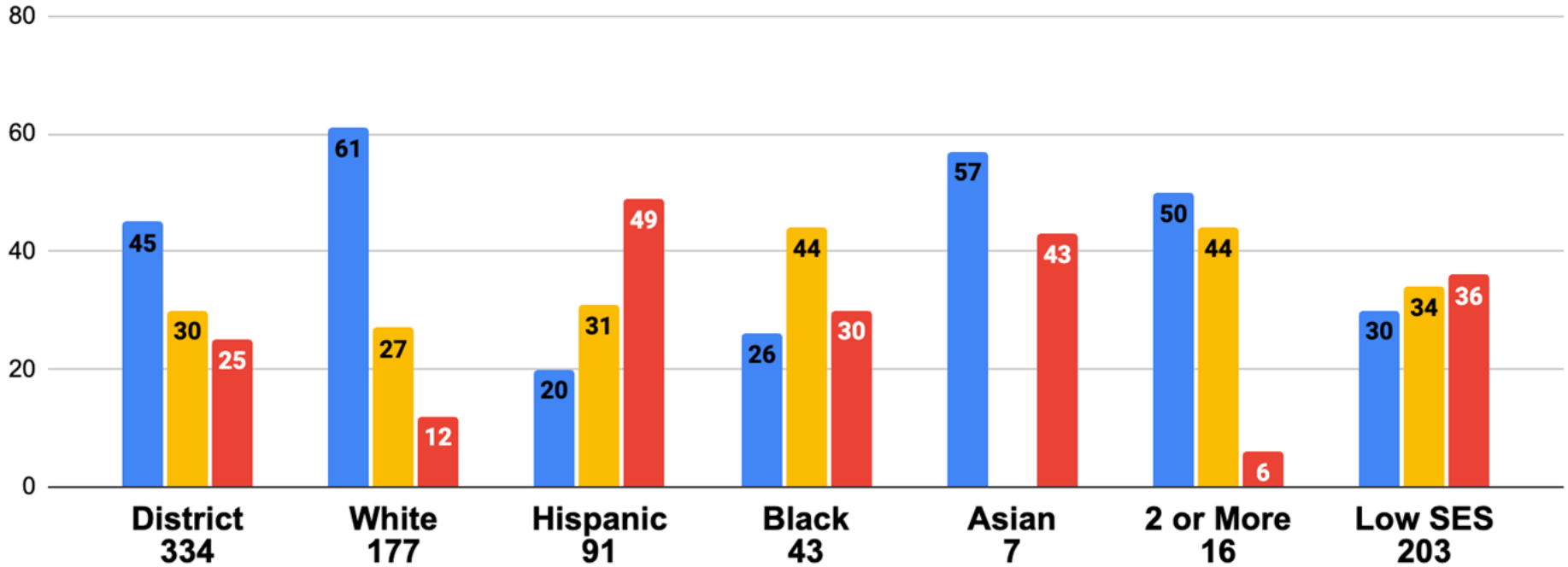
Kindergarten Readiness Assessment (KRA)



Source: 2022-23 Kindergarten Readiness Assessment Report

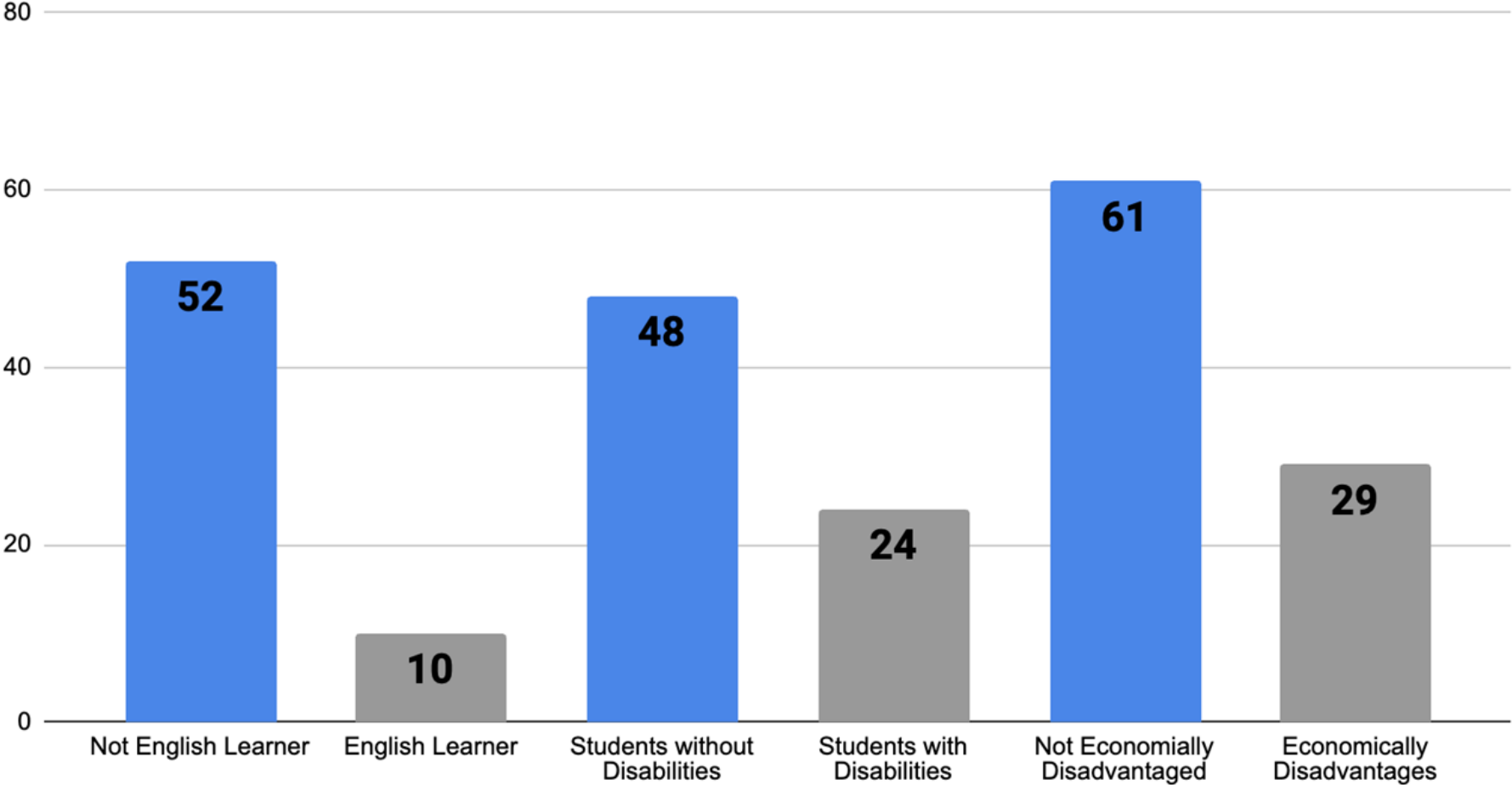
Talbot County Public Schools KRA Data 2022-2023 Composite

■ Demonstrating % ■ Approaching % ■ Emerging %



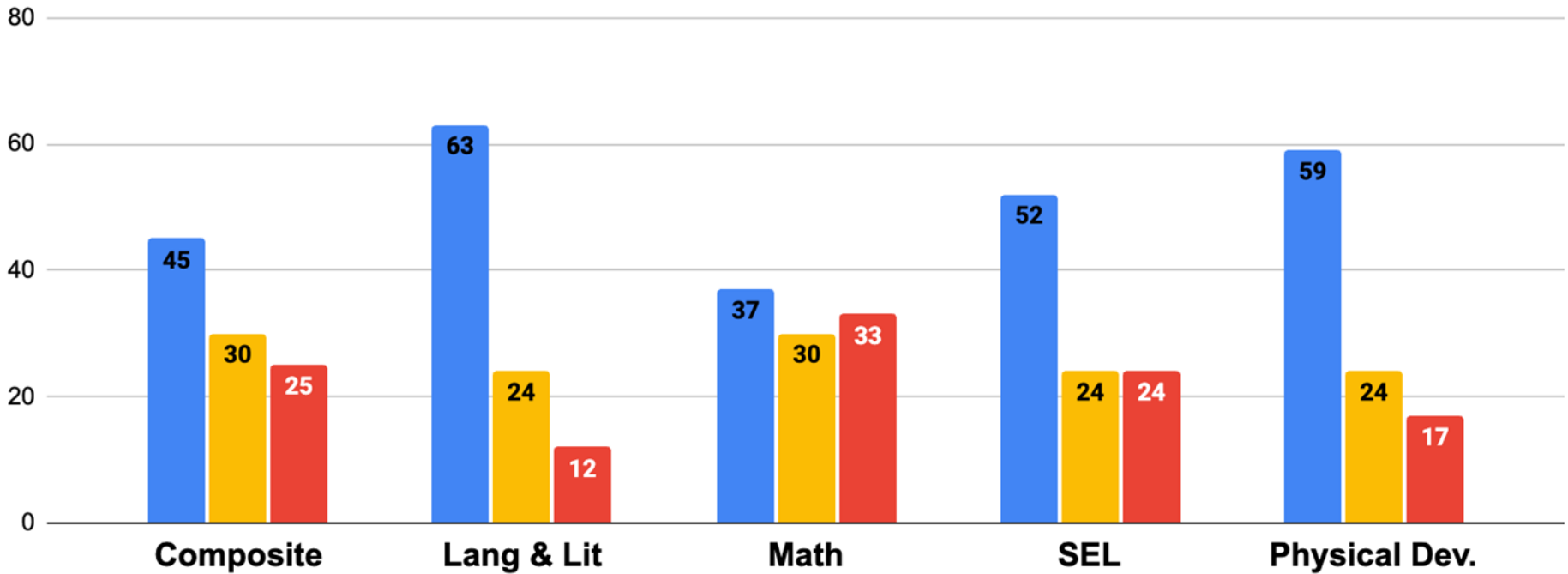
TCPS KRA Student Comparison 2022-2023

Percent Demonstrating Readiness



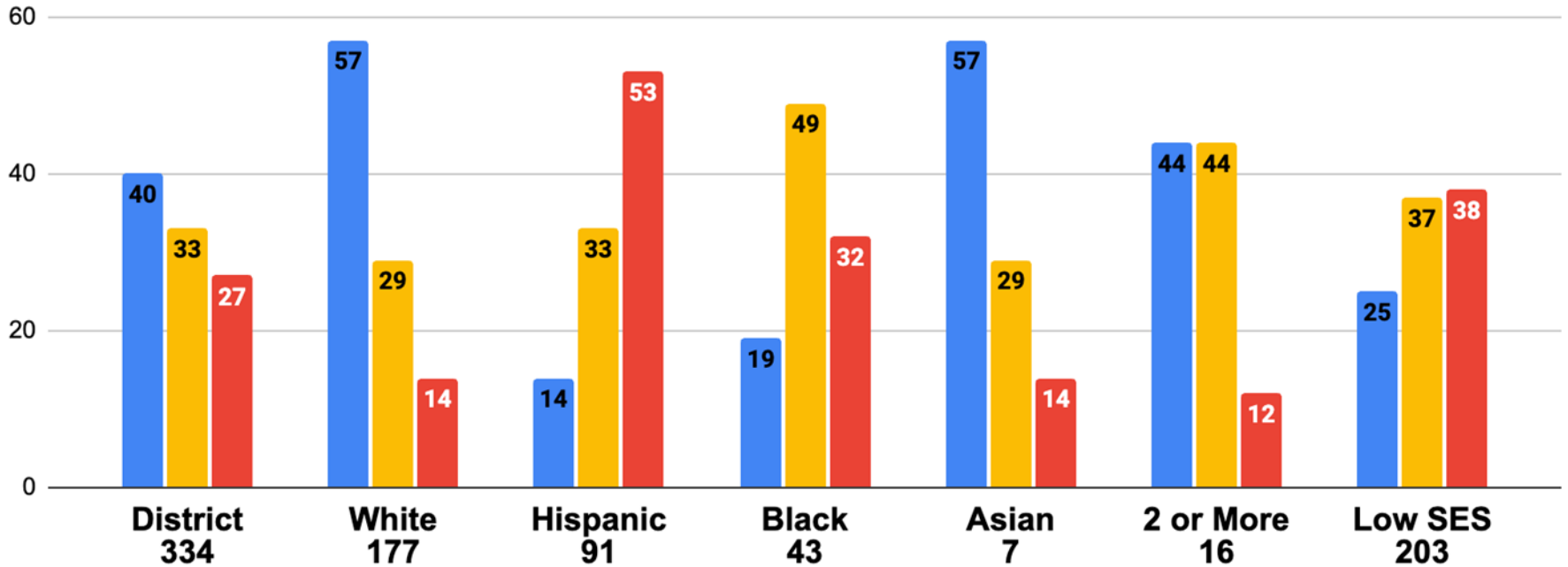
Talbot County Public Schools KRA Data 2022-2023 DOMAINS

Demonstrating % Approaching % Emerging %



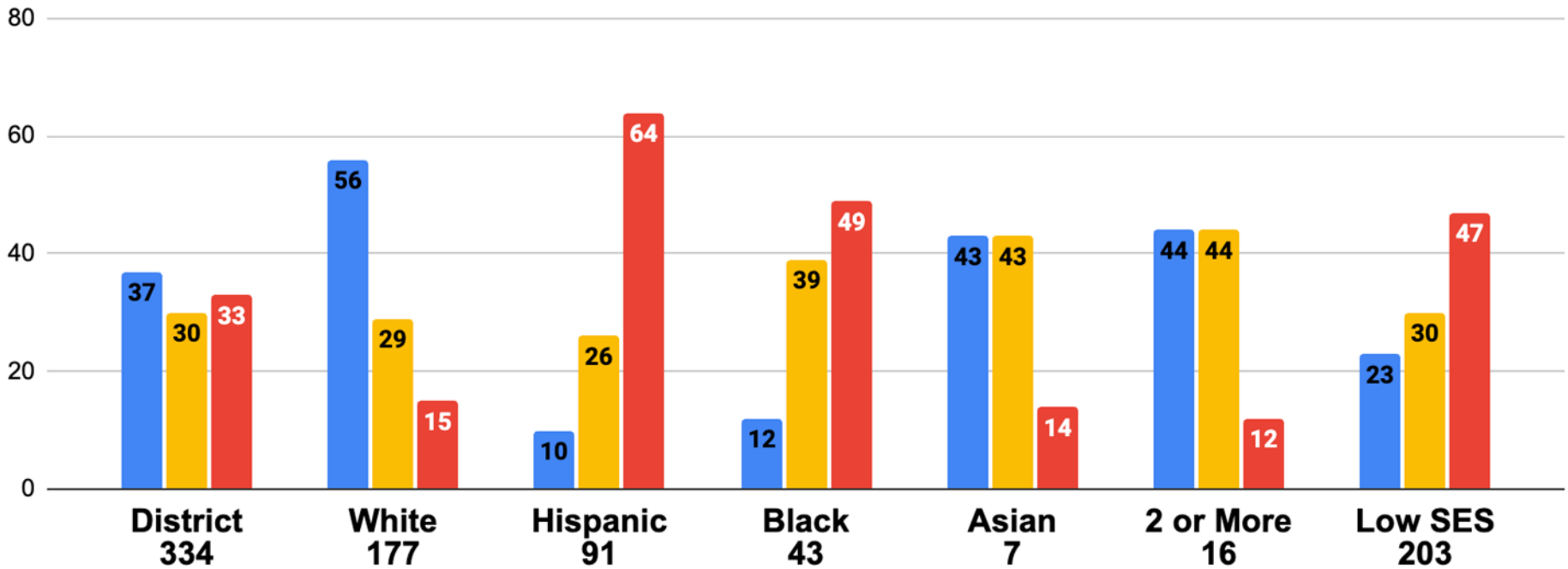
Talbot County Public Schools KRA Data 2022-2023 Lang & Lit

■ Demonstrating % ■ Approaching % ■ Emerging %



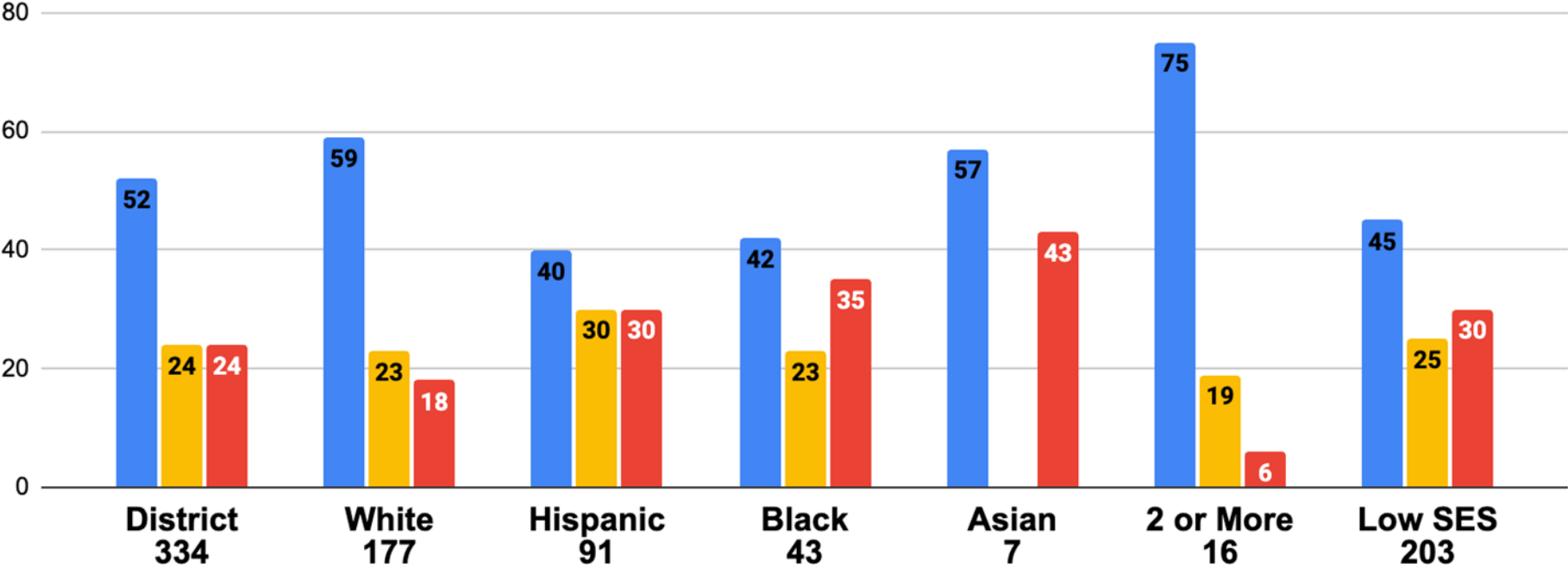
Talbot County Public Schools KRA Data 2022-2023 Math

Demonstrating % Approaching % Emerging %



Talbot County Public Schools KRA Data 2022-2023 SEL

Demonstrating % Approaching % Emerging %



FG



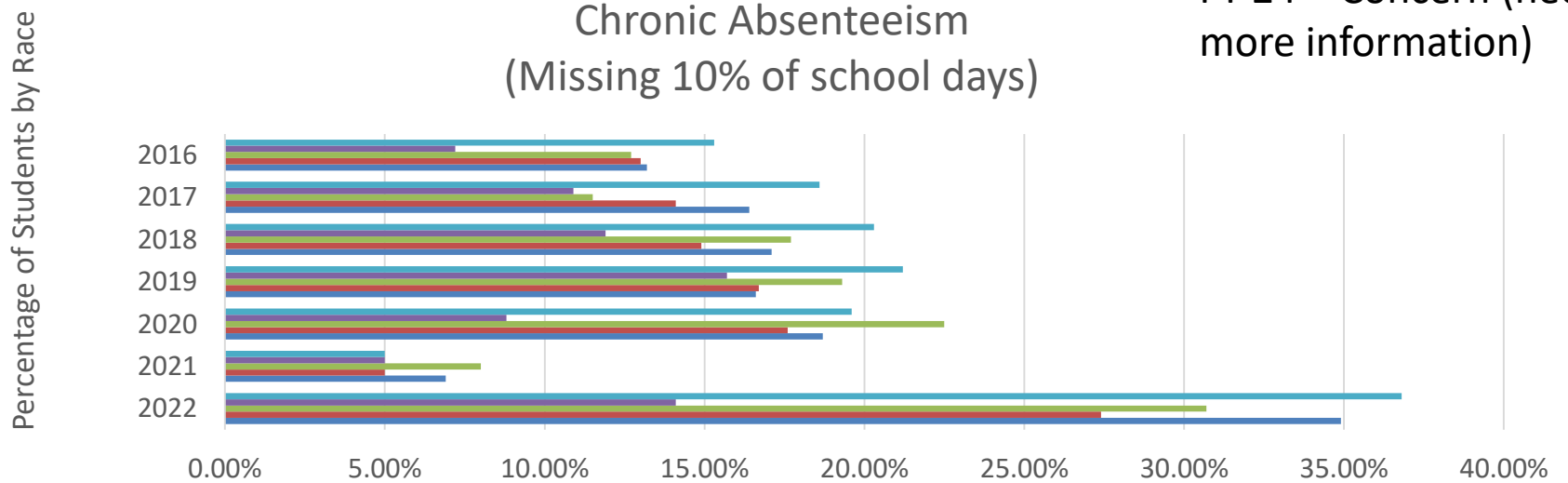
RESULTS FOR CHILD WELL BEING

Children are Successful in School

New FY21

School Attendance

FY 22 – Concern
 FY 23 – Monitor (need updated data)
 FY 24 – Concern (need more information)



	2022	2021	2020	2019	2018	2017	2016
2 or more races	36.80%	5.00%	19.60%	21.20%	20.30%	18.60%	15.30%
Asian	14.10%	5.00%	8.80%	15.70%	11.90%	10.90%	7.20%
Hispanic	30.70%	8.00%	22.50%	19.30%	17.70%	11.50%	12.70%
White	27.40%	5.00%	17.60%	16.70%	14.90%	14.10%	13%
Black	34.90%	6.90%	18.70%	16.60%	17.10%	16.40%	13.20%



■ 2 or more races ■ Asian ■ Hispanic ■ White ■ Black

5% in 2021 indicates at or below 5%

Source: MSDE Report Card, most recent 2022

New FY21

School Attendance

2021/22 Chronic Absenteeism (Missing 10% or > of school days)

Student Population	% Chronically Absent
Black	34.9% (233/668)
Hispanic / Latino	30.7% (331/1,079)
White	27.4% (626/2,288)
Two or More Races	36.8% (102/277)

Total of 1,305 students in SY22 were chronically absent.

Elementary = 424 (32%) Middle =307 (24%) High =574 (44%)

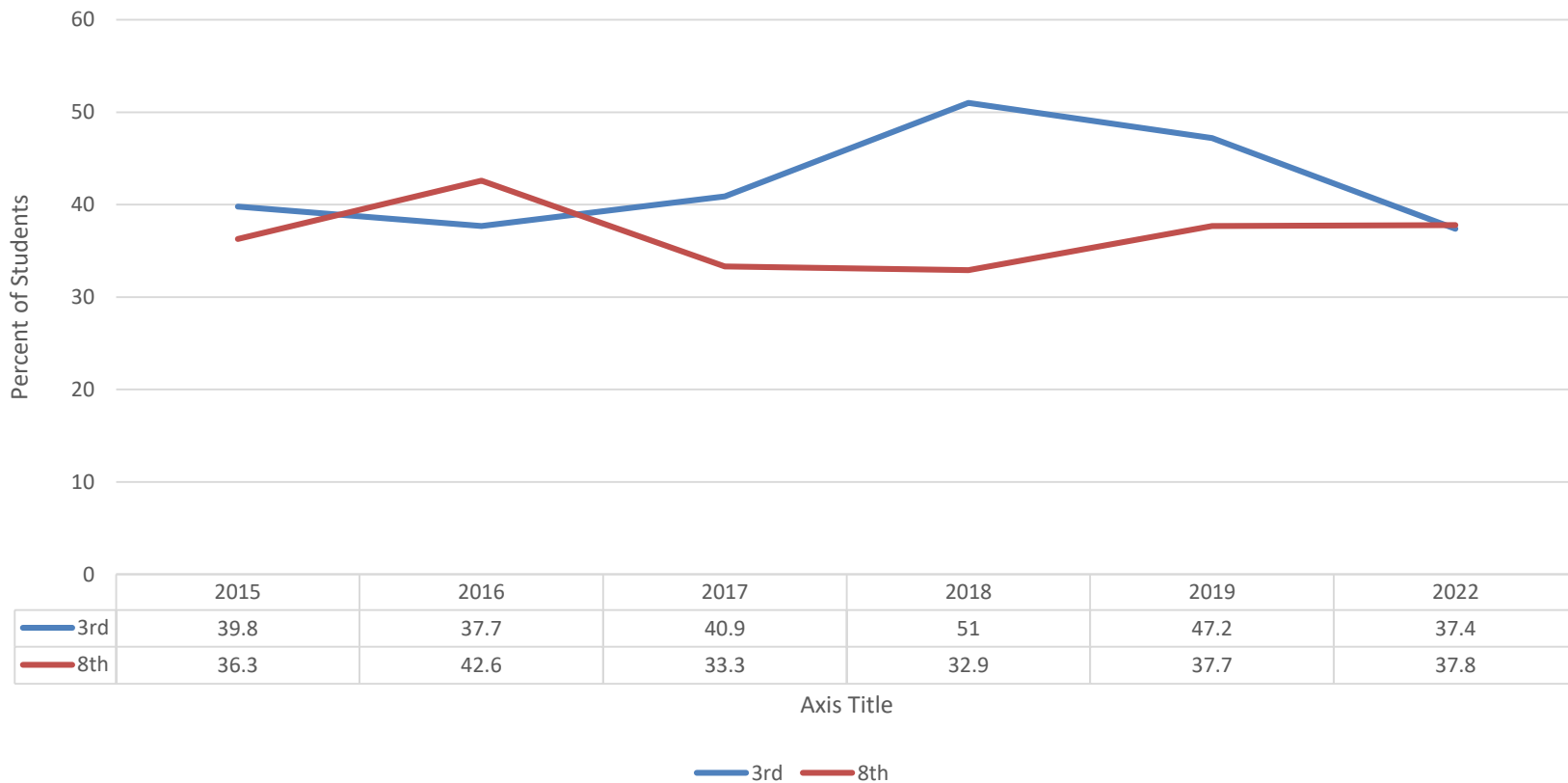
Note - COVID-19: 5-day quarantine required

Source: MSDE Report Card, 2022

MD CAP – English Language Arts

FY 23 – Monitor
(need updated data)
FY 24 - Concern

MCAP: Reading: 3rd and 8th Grade Student Performing at or Above “Proficient”



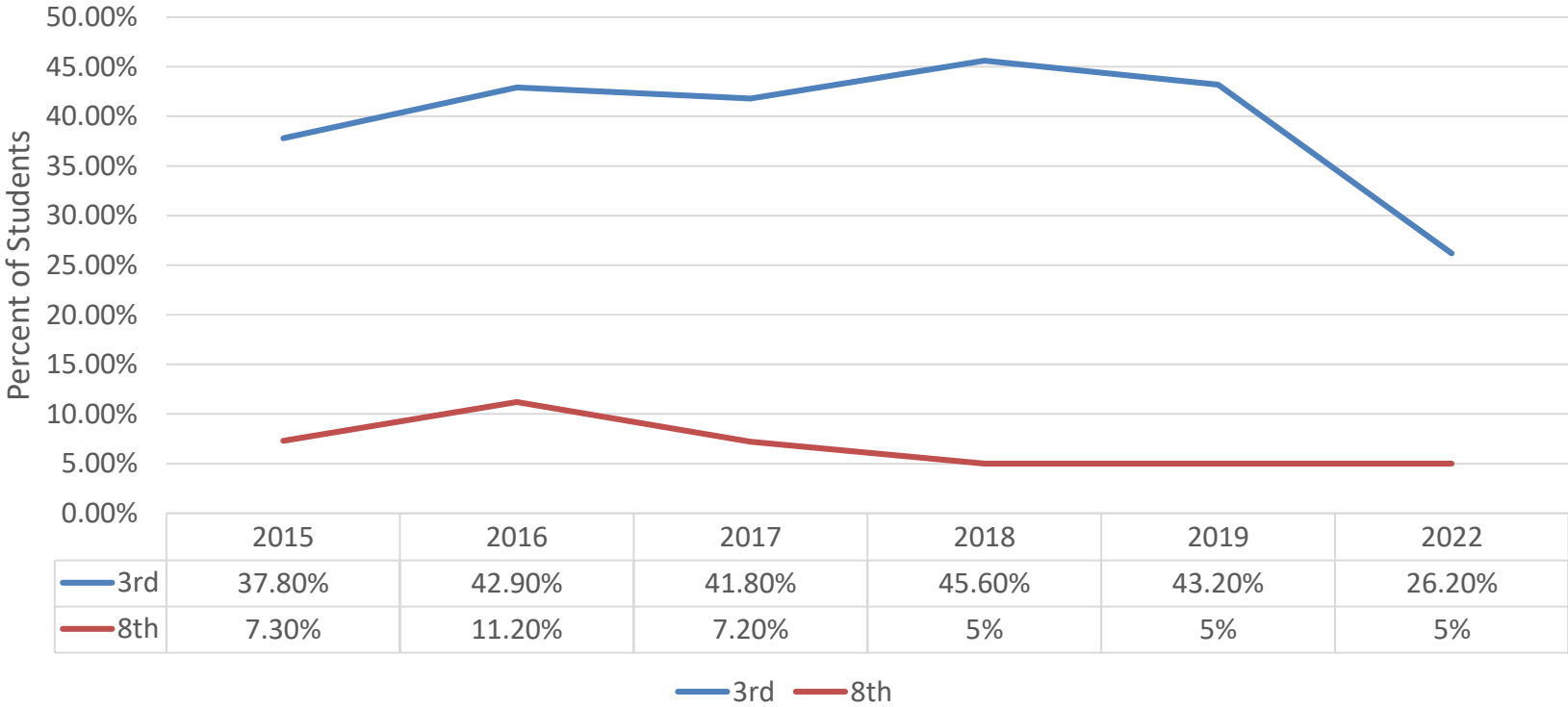
Source: MSDE Report Card, most recent 2022

New FY21

MCAP - Math

FY 23 – Monitor
(need updated data)
FY 24 – Concern

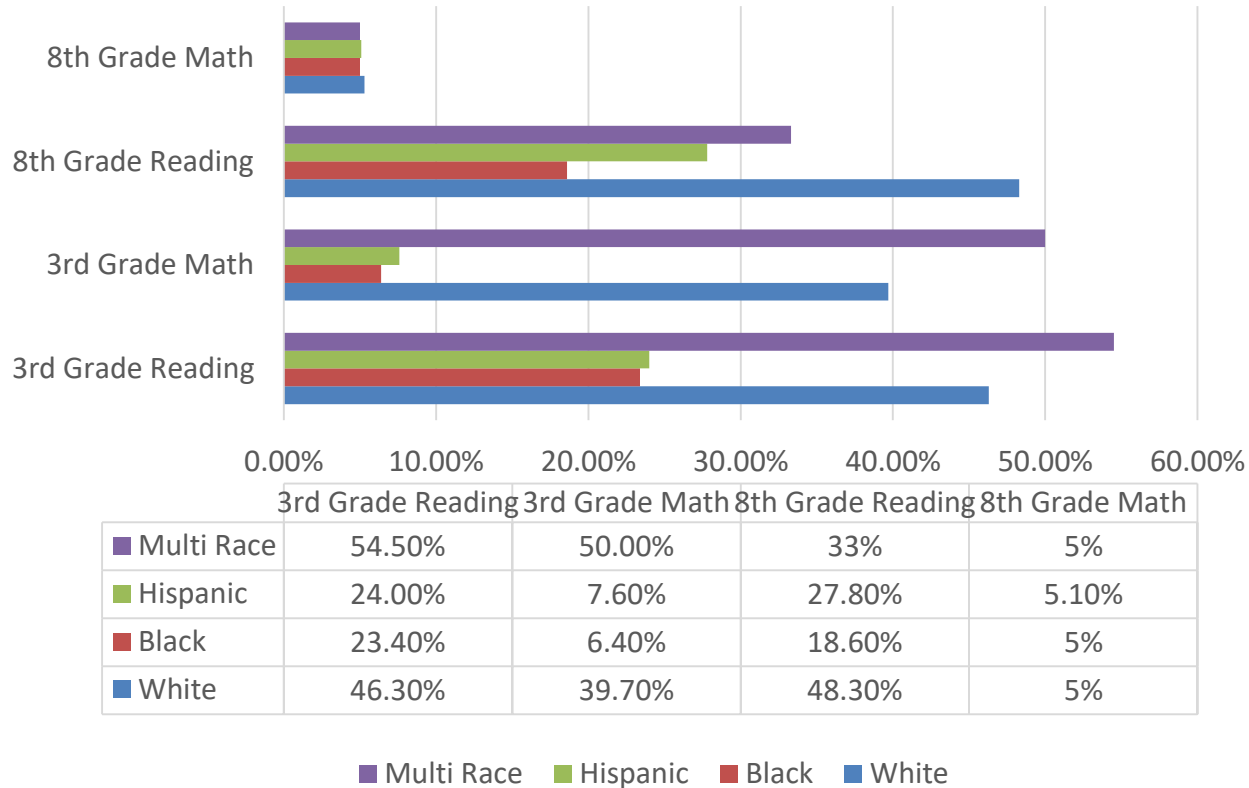
MCAP: Math: 3rd and 8th Grade Students Performing at “Proficient”



Source: MSDE Report Card, most recent 2022

2022 MCAP 3rd and 8th Grade By Race

FY 24 - Concern (racial disparities)



NOTE: 5% = Equal or less than 5%

Source: MSDE Report Card, 2022

MSAA: Math and English Percent of students (8th and 11th) Scoring at or Above Proficient on Multi-State Alternative Assessment

Talbot has too few students so data is not available via MSDE report card

Academic Achievement

FY 20 - Concern (racial disparities)
 FY 21 – Concern (racial disparities)
 FY 22 – Concern (racial disparities)

ACHIEVEMENT (E/M/H)	PERCENT PROFICIENT					
	PERCENT	MATH		ENGLISH LANGUAGE ARTS		
		ANNUAL TARGET	IMPROVEMENT	PERCENT	ANNUAL TARGET	IMPROVEMENT
All Students	23.0% / 13.0% / 22.3%	✘	✘	43.0% / 39.9% / 56.2%	✔	✔
Asian	42.1% / 42.9% / na	✔	✘	57.9% / 66.7% / na	✔	✘
Black/African Amer.	<= 5.0% / 6.5% / 12.5%	✘	✘	23.3% / 20.3% / 42.5%	✔	✔
Hispanic/Latino	8.0% / <= 5.0% / 10.0%	✘	✘	26.9% / 29.2% / 33.9%	✔	✔
White	36.4% / 17.7% / 28.6%	✘	✘	55.8% / 49.4% / 65.9%	✔	✔
Two or more races	23.6% / 9.0% / 21.7%	✘	✘	50.0% / 37.9% / 63.6%	✔	✔
Students w/Disabilities	<= 5.0% / <= 5.0% / 11.4%	✘	✘	6.0% / 7.7% / 20.6%	✔	✔
English Learner	5.8% / <= 5.0% / <= 5.0%	✘	✔	18.5% / 9.2% / <= 5.0%	✔	✔
Econ. Disadvantaged	11.8% / 6.1% / <= 5.0%	✘	✘	33.3% / 26.2% / 41.3%	✔	✔

Footnote: Only Student groups with 10 or more students are reported. Student groups include the following: American Indian/Alaskan Native, Asian, Native Hawaiian or Other Pacific Islander, Black/African American, Hispanic/Latino of any Race, White, Two or More Races, Economically Disadvantaged, Students with Disabilities, and English Learners. ✔ =Met ✘ =Not Met



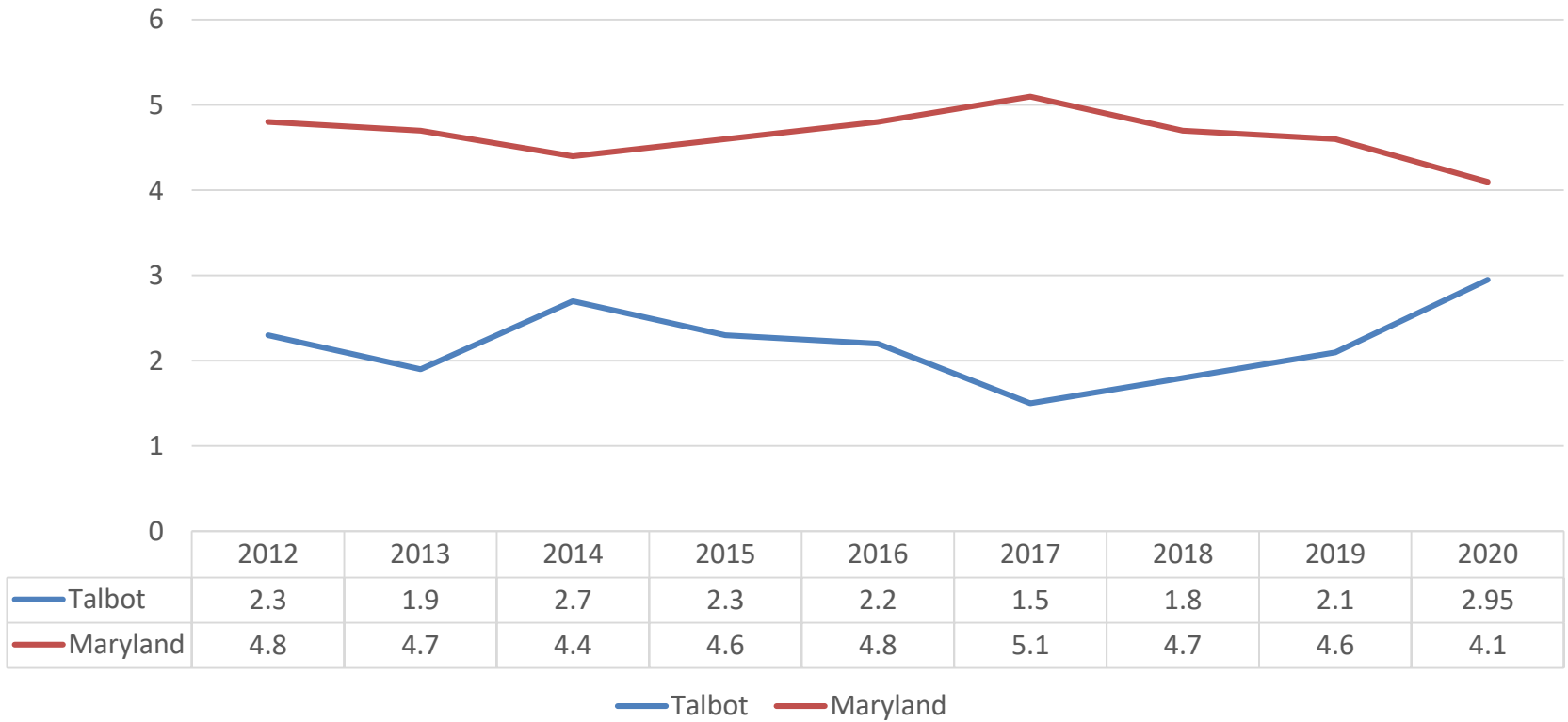
RESULTS FOR CHILD WELL BEING

Communities are Safe for
Children, Youth, and Families

Indicator: Crime

FY 13 – Monitor
FY 16-17 – Positive Progress
FY 18 – Monitor
FY 23 – Monitor
FY 24 - Monitor

Violent Crimes
Rate per 1,000 persons

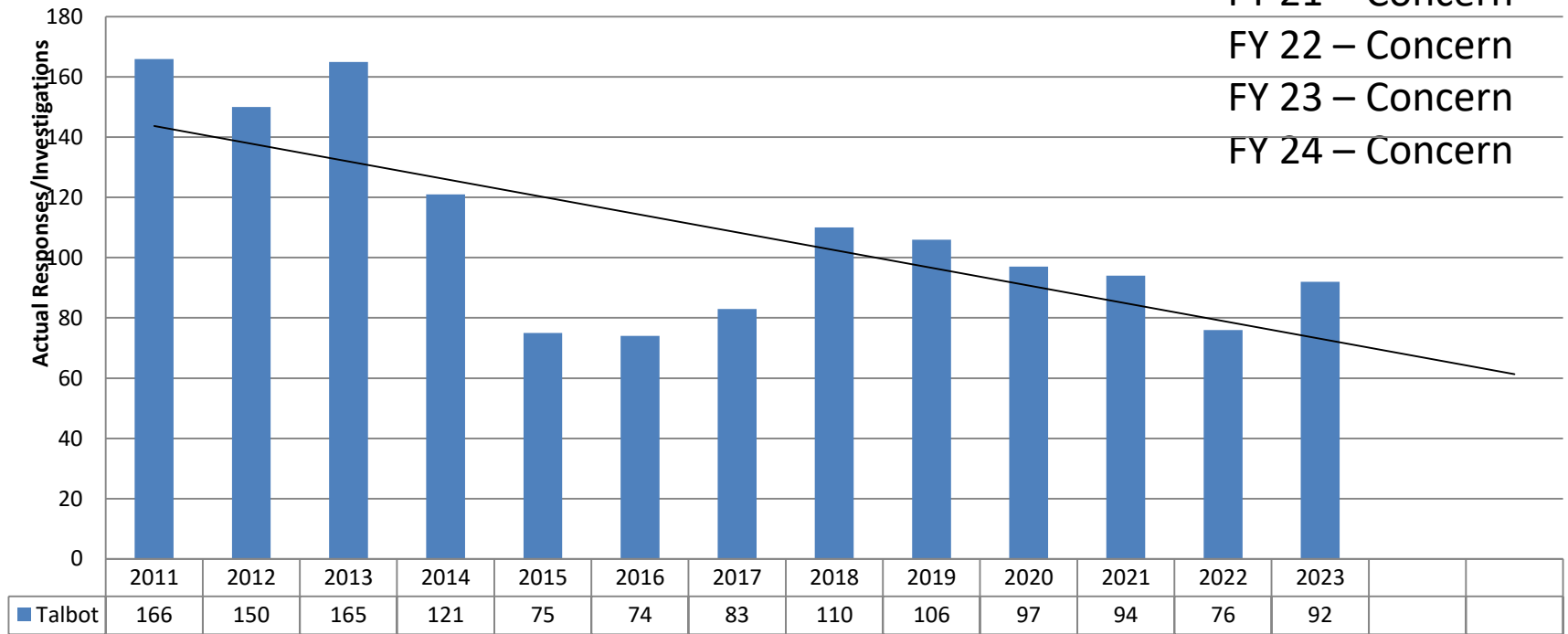


Source: Governor's Office for Crime Control and Prevention. Most recent 2020.

Indicator: Maltreatment

FY 13 – Monitor
 FY 16 – no data
 FY 17 – Monitor
 FY 18 – Monitor
 FY 19 – Concern
 FY 20 – Concern
 FY 21 – Concern
 FY 22 – Concern
 FY 23 – Concern
 FY 24 – Concern

Talbot Child Protective Services Responses



FY22 NOTE: Discussion about the distinction between investigative cases and alternate response. See next slide.

Source: Preliminary data, Talbot County Department of Social Services, racial demographics unavailable – In data development

Maltreatment continued

	FY16	FY17	FY18	FY19	FY20	FY21	FY22	FY23
Screened In: Alternative Response	39 (53%)	38 (46%)	65 (59%)	57 (54%)	52 (54%)	29 (31%)	34 (45%)	38 (41%)
Screened In: Investigative Response	35 (46%)	45 (54%)	45 (41%)	49 (46%)	45 (46%)	65 (69%)	42 (55%)	54 (58%)
TOTAL RESPONSES	74	83	110	106	97	94	76	92

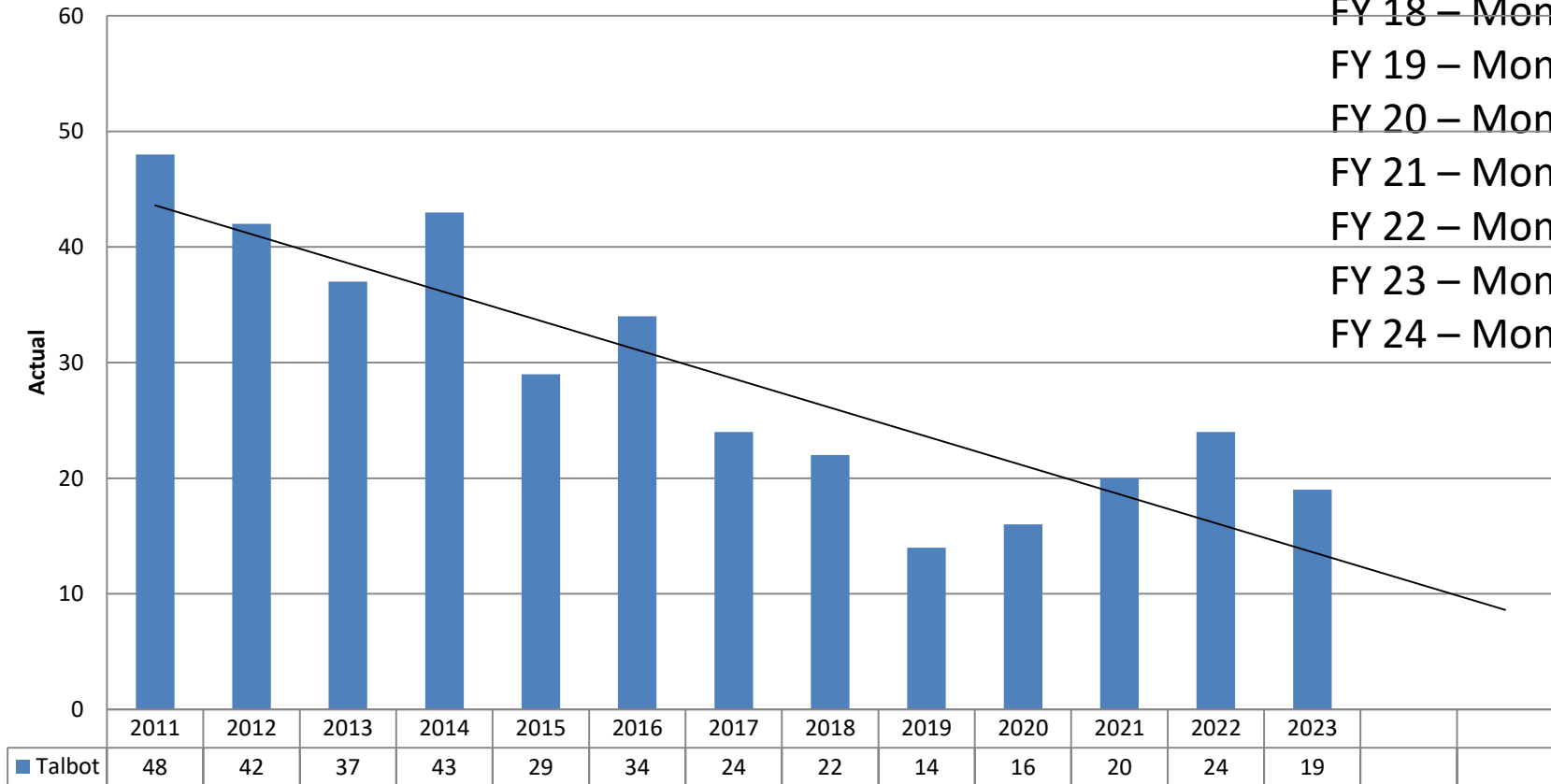
Alternative Response: approach for managing low risk reports of child neglect & abuse that allows local DSS to help MD families access services and supports that will resolve their concerns. AR involves working collaboratively with families to identify concerns, locate and apply solutions that can help keep families together and provide them with the services and supports they need to keep their children safe.

Investigative Response: investigation to determine if abuse or neglect has occurred and to ensure child safety and well-being.

Indicator: Out-of-Home Placement

FY 13 – Monitor
 FY 16 – Monitor
 FY 17 – Monitor
 FY 18 – Monitor
 FY 19 – Monitor
 FY 20 – Monitor
 FY 21 – Monitor
 FY 22 – Monitor
 FY 23 – Monitor
 FY 24 – Monitor

Talbot Out of Home Placement



2019 – By Race – White-8, Black -3, Multi-Race – 3

2020 – By Race – White-8, Black-8

2021 – By Race - White 10, Black 10

2022 – By Race – White 10, Black 5, Multi-Race 8, Asian 1

2023 – By Race – Multi-race 8, White 5, Black 3, Latine 2, Asian 1

FY22 NOTE: During pandemic, youth +18 could stay in foster care.

Source: Preliminary data, Talbot County Department of Social Services

New FY21

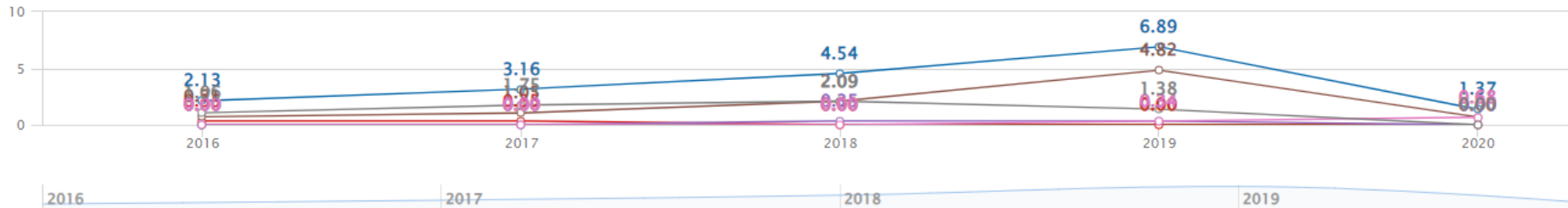
Lead Exposure

Lead Levels: Rate of New Cases of Elevated Blood Lead Level ($\geq 5\mu\text{g}/\text{dL}$) per 1,000 of the Population of Children Aged 0-6

Current Value
1.37

Line Bar Comparison

Data Source: Maryland Department of the Environment



- [TACO] Lead Levels: Rate of New Cases of Elevated Blood Lead Level ($\geq 5\mu\text{g}/\text{dL}$) per 1,000 of the Population of Children Aged 0-6
- [TACO] Lead Levels: Rate of New Cases of Elevated Blood Lead Level ($\geq 5\mu\text{g}/\text{dL}$) per 1,000 of the Population of Children Aged 0-6- Asian or Native Hawaiian or Pacific Islander, Hispanic
- [TACO] Lead Levels: Rate of New Cases of Elevated Blood Lead Level ($\geq 5\mu\text{g}/\text{dL}$) per 1,000 of the Population of Children Aged 0-6- Asian or Native Hawaiian or Pacific Islander, Non Hispanic
- [TACO] Lead Levels: Rate of New Cases of Elevated Blood Lead Level ($\geq 5\mu\text{g}/\text{dL}$) per 1,000 of the Population of Children Aged 0-6- Black or African American, Hispanic
- [TACO] Lead Levels: Rate of New Cases of Elevated Blood Lead Level ($\geq 5\mu\text{g}/\text{dL}$) per 1,000 of the Population of Children Aged 0-6- Black or African American, Non Hispanic
- [TACO] Lead Levels: Rate of New Cases of Elevated Blood Lead Level ($\geq 5\mu\text{g}/\text{dL}$) per 1,000 of the Population of Children Aged 0-6- Other or Unknown Race, Hispanic
- [TACO] Lead Levels: Rate of New Cases of Elevated Blood Lead Level ($\geq 5\mu\text{g}/\text{dL}$) per 1,000 of the Population of Children Aged 0-6- Other or Unknown Race, Non Hispanic
- [TACO] Lead Levels: Rate of New Cases of Elevated Blood Lead Level ($\geq 5\mu\text{g}/\text{dL}$) per 1,000 of the Population of Children Aged 0-6- White, Hispanic
- [TACO] Lead Levels: Rate of New Cases of Elevated Blood Lead Level ($\geq 5\mu\text{g}/\text{dL}$) per 1,000 of the Population of Children Aged 0-6- White, Non Hispanic



RESULTS FOR CHILD WELL BEING

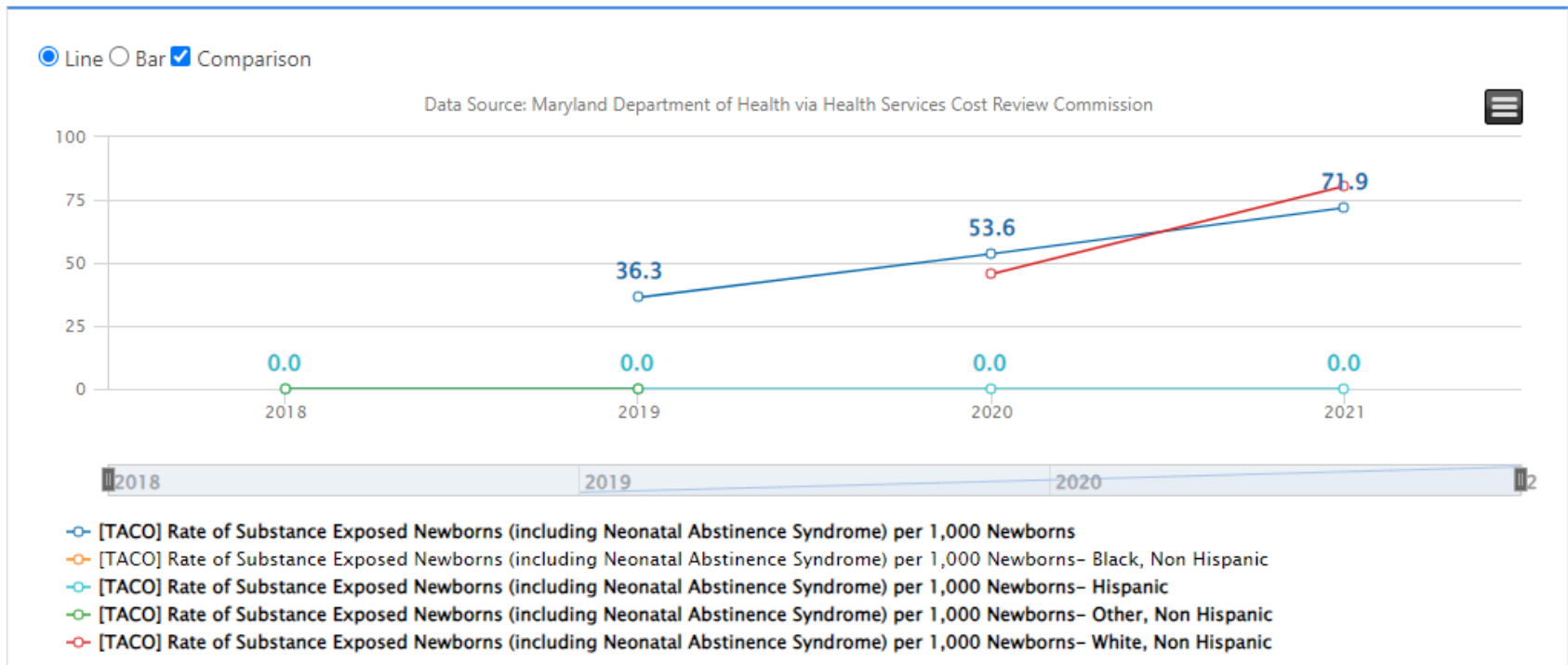
Babies Born Healthy

New – Substance Exposed Newborns

FY 24 – Concern (need more data)

Rate of Substance Exposed Newborns (including Neonatal Abstinence Syndrome) per 1,000 Newborns

71.9 2021

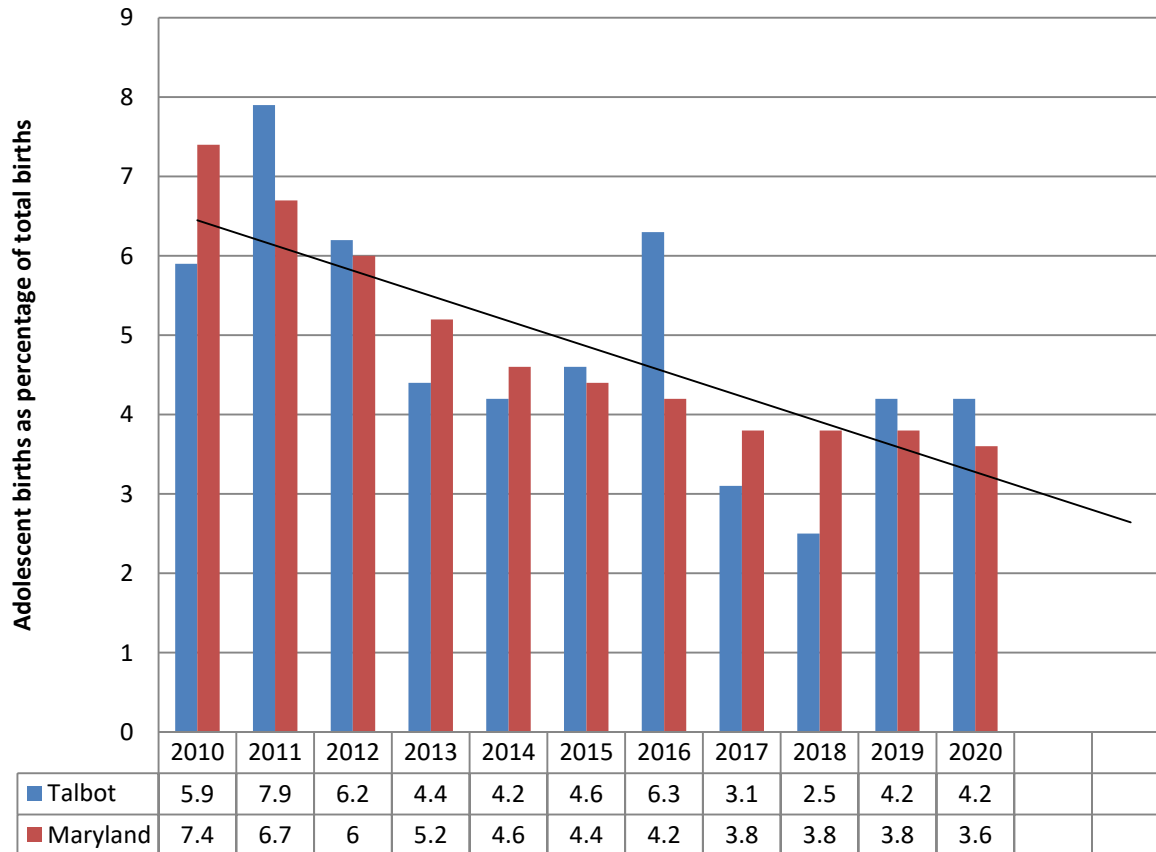


Source: Governor's Office for Crime Control and Prevention

Indicator: Births to Adolescents

- FY 13 – Monitor
- FY 16 – Positive Progress
- FY 18 - Monitor
- FY 19 - Monitor
- FY 20 – Monitor
- FY 21 –
- FY 22 –
- FY 23 – Monitor
- FY 24 – Monitor

Births to Adolescents (Ages 10-19)



■ Talbot
■ Maryland
— Linear (Talbot)

Source:
 DHMH-
 Annual Vital
 Statistics

Source: MD Department of Health Annual Vital Statistics 2020, most recent

Talbot Births to Adolescents				
Actual Numbers				
Year	<age 15	Age 15-17	Age 18-19	Total
FY 13	0	6	9	15
FY 14	0	2	12	14
FY 15	1	6	8	15
FY 16	0	7	14	21
FY 17	1	2	8	11
FY 18	0	2	6	8
FY 19	0	4	10	14
FY 20	1	7	8	16

FY 17 – Births by race of mother – 54.5% White, 36.4% Black, 36.4% Hispanic

FY 18 – Births by race of mother – 87.5% White, 12.5% Black, 62.5% Hispanic

FY 19 – Births by race of mother – 78.6% White, 21.4% Black, 21.4% Hispanic

FY 20 – Births by race of mother – 68.8% White, 36.4% Black, 43.8% Hispanic

Source: MD Department of Health Annual Vital Statistics 2020, most recent

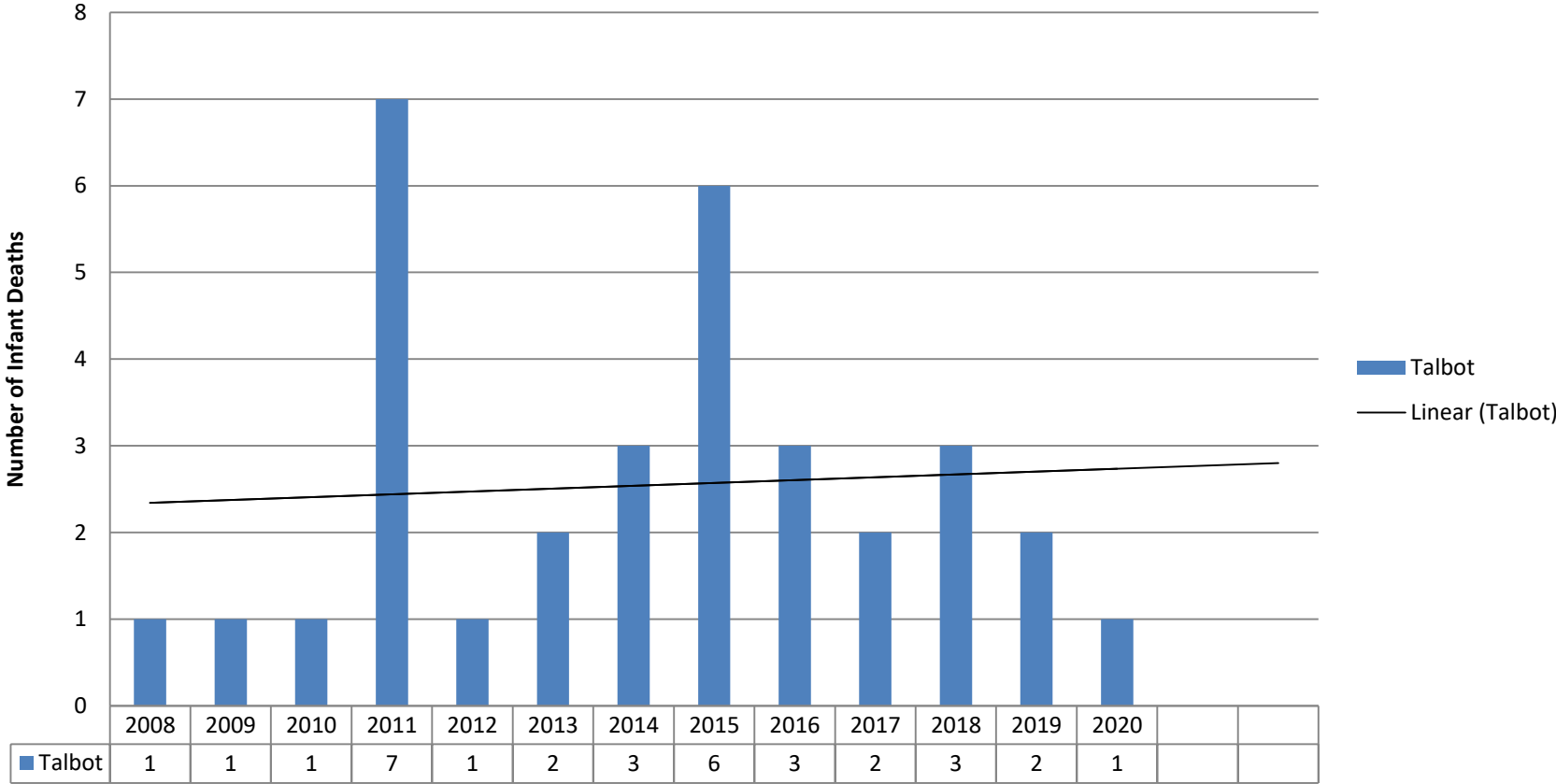
Indicator: Infant Mortality

FY 13 – Positive Progress

FY 16-17 – Monitor

FY 18 – Monitor

Infant Mortality

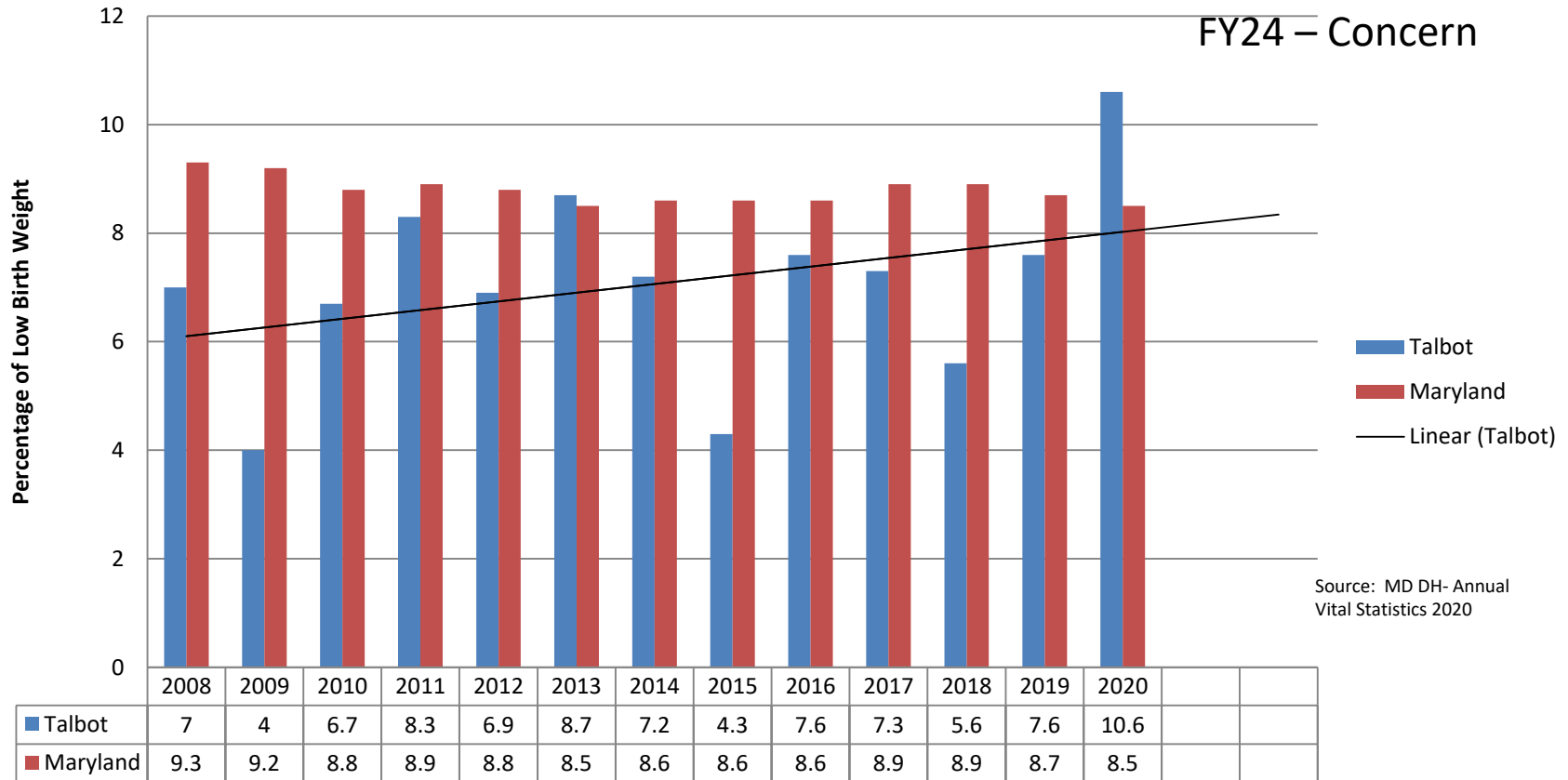


Source: DHMH- Annual Vital Statistics, 2020 – most recent

Indicator: Low Birth Weight

FY 13 – Positive Progress
 FY 16 – Positive Progress
 FY 17- Positive Progress
 FY 18 – Monitor
 FY23 – Concern
 FY24 – Concern

Low Birth Weight



Source: MD DH- Annual Vital Statistics 2020

Actual Numbers

FY13 = 30

FY14 = 24

FY15 = 14

FY16 = 25

FY17 = 26

FY18 = 8

FY19 = 25

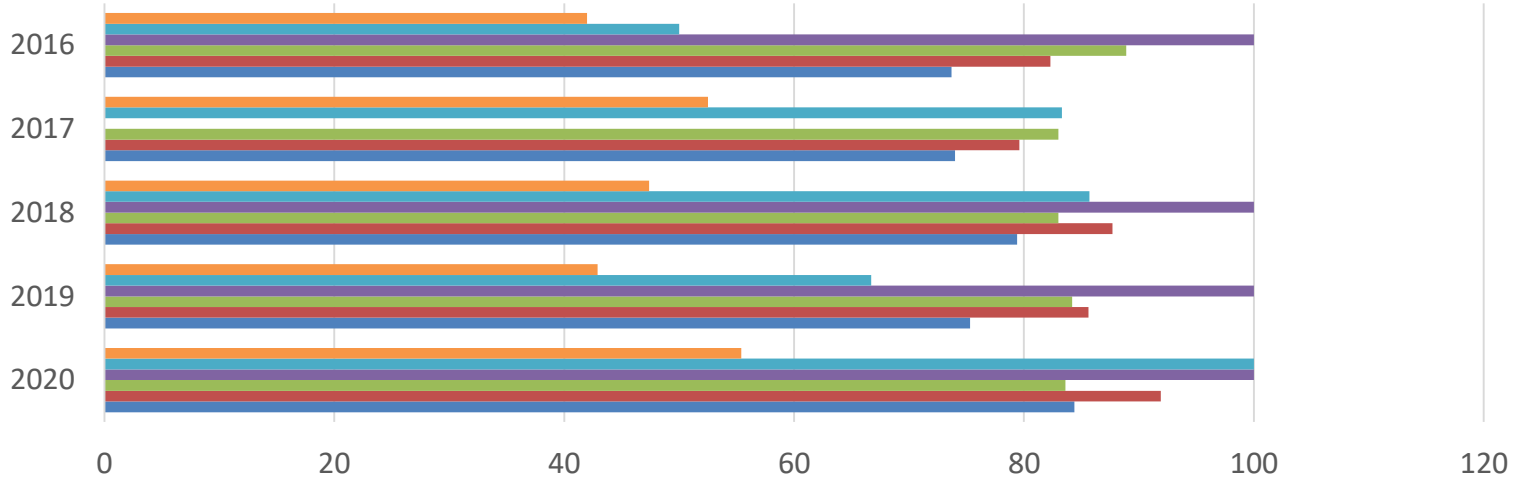
FY20 = 40



Prenatal Care

Prenatal Care in First Trimester

Percentage of Pregnant Women



	2020	2019	2018	2017	2016
Hispanic	55.4	42.9	47.4	52.5	42
Asian/PI	100	66.7	85.7	83.3	50
American Indian	100	100	100	0	100
Black	83.6	84.2	83	83	88.9
White	91.9	85.6	87.7	79.6	82.3
All	84.4	75.3	79.4	74	73.7



Hispanic Asian/PI American Indian Black White All

Indicator & Strategic Priority Ranking

CONCERN FY24	MONITOR FY24
Child Poverty	Immunizations
Housing	Obesity
Childhood Hunger	Physical Activity
Youth Homelessness	Juvenile Felony Offenses
Impact of Incarceration	High School Program Completion
Mental Health	Crime
Substance Use (Youth)	Out of Home Placements
Vaping (Youth)	Births to Adolescents
Affordable Health Insurance	Substance Exposed Newborns
Kindergarten Readiness	
MCAP Scores	
School Attendance	
Child Maltreatment	
Low Birth Weight Babies	
Prenatal Care	