



# Talbot County **Results** and Indicators Data Review FY 23

**Compiled by the**  
**Talbot Family Network**  
Local Management Board for Talbot County

Board Presentation October 18, 2022

# **Last data review by the TFN Board**

## **January 2022**

**Starting FY23, the data review will occur in the fall** ahead of the annual Notice of Funding Available (NOFA) that the State releases to LMBs in January.

For this presentation, some data cannot be updated as less than a year has passed.



This symbol indicates that updated is not available at this time.

# **FY23 TFN Board of Directors Retreat**

## **WHAT WE'RE GOING TO DO TODAY**

### **Data Review**

- Results and Indicators
- Community Assessment Results
- Family Economic Stability Survey Results

## **WHAT WE HOPE TO ACCOMPLISH**

### **Identify our Community Priorities (3-5)**

- Assess if the right strategies are in place through asset and gap mapping

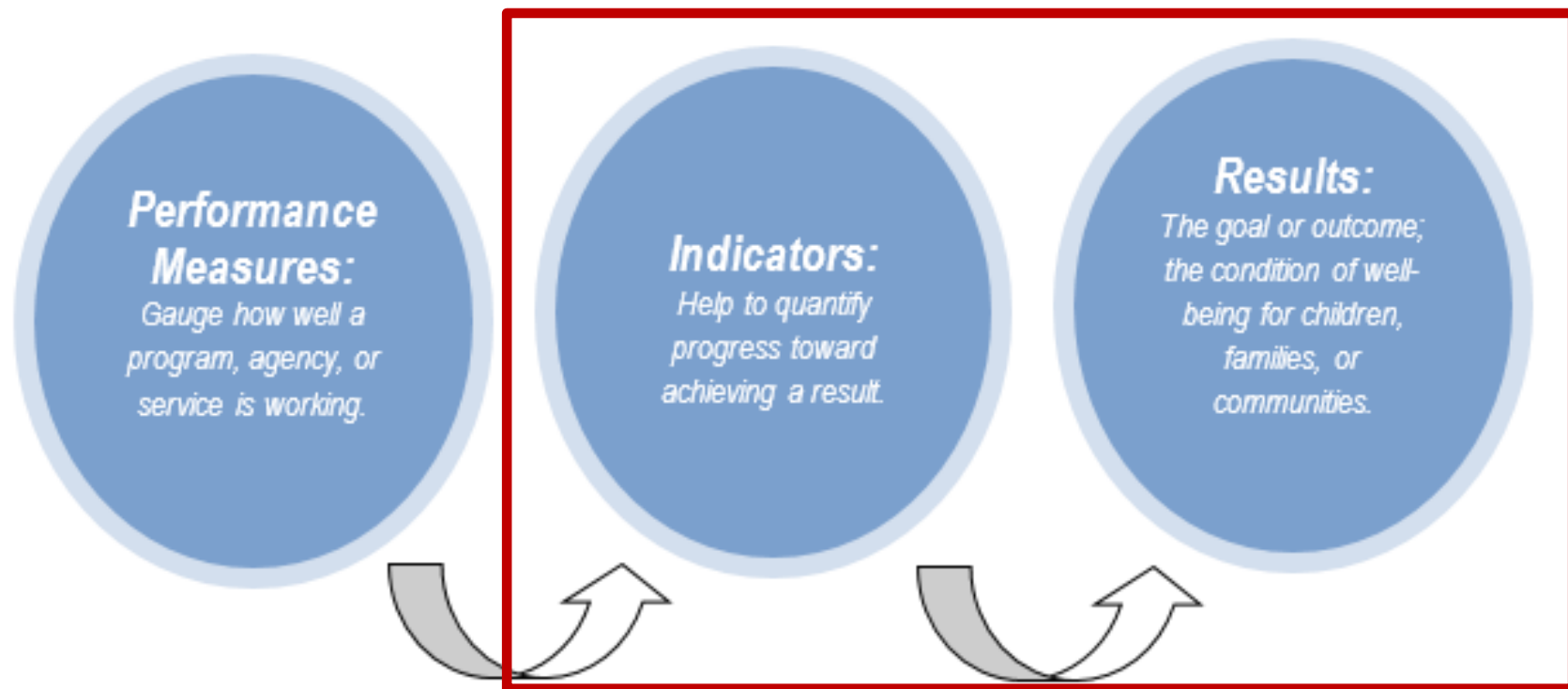
# **LMBs Need to Answer These Community Accountability Questions**

**1. What are our community priorities?**

2. Are the right strategies in place to achieve these priorities?

3. Is TFN funding the right programs for our community?

# Maryland RESULTS AND INDICATORS for Child Wellbeing



**POPULATION LEVEL**  
(aka Program Level)



**COMMUNITY LEVEL**

# Maryland CHILD WELL-BEING RESULTS

## ❖ FY22 TFN Priorities

- Babies Born Healthy
- Healthy Children
- Children Enter School Ready to Learn
- Children are Successful in School
- ❖ Youth will Complete School
- ❖ Youth have Opportunities for Employment or Career Readiness
- Communities are Safe for Children, Youth and Families
- ❖ Families are Economically Stable

# Children's Cabinet Program/Strategic Priorities

## ❖ FY22 TFN Priorities

- Reducing the Impact of Parental Incarceration on Children, Youth, Families, and Communities
- Reducing Youth Experiencing Homelessness
- ❖ Improving Outcomes for Disconnected/Opportunity Youth
- ❖ Reducing Childhood Hunger
- ❖ Increasing Opportunities for Community-Based Programs and Services for Youth *(not limited to diversion)*
- Preventing Out of State Placements

## KEY THEMES from Maryland Children's Cabinet

1. Racial  
and Ethnic  
Disparities

2. ACES and  
Trauma-  
Informed  
Practices

3. Research-  
Based  
Practices

(also promising practices, best  
practices, & evidence-based practices)

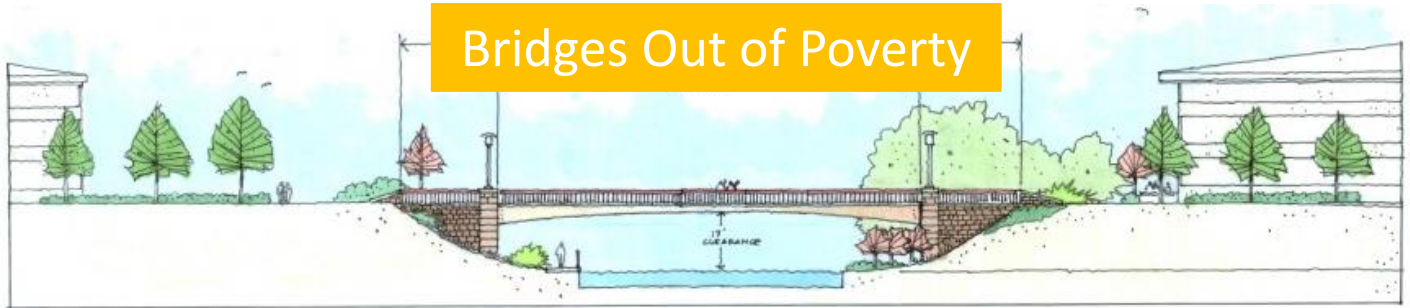
**+** LMBs are encouraged to adopt a  
**COLLECTIVE IMPACT** approach



# TFN's TOOLKIT

Social  
Determinants of  
Health

Bridges Out of Poverty



Groundwater

# FY23 Community Assessment

## (Every 3-5 Years)

### ❖ Community Survey

315 Responses

### ❖ Focus Groups

6 sessions (Talbot Mentors, TCDSS, ChesMRC, Healthy Families, Talbot Interfaith Shelters [2] – families & singles)

- Participants: 33
- Gender: Female 28/Male 5
- Demographics: People of Color 75%  
White 25%
- Language: English Speaking 73%  
Spanish Speaking 27%

**FG**

Slides with this symbol were concerns raised in focus groups.

# FY23 Focus Group Summary

Topic	TM	TIS-EP	TIS	DSS	HF	CMRC
<b>Housing</b>	***	***	***	***	***	***
<b>Cost of Living</b>	**	**	**	***	*	*
<b>Childcare</b>	***		***		***	*
<b>Schools</b>	***				***	***
<b>Youth Behaviors</b>	***		*	*		
<b>Transportation</b>	*	**	***	*	**	***
<b>Bullying</b>	*		*		***	***
<b>Mental Health</b>	**	***	***	**		
<b>Racism</b>		**	***	***		
<b>Health Insurance</b>					**	***

## CROSS TABULATION OF COMMUNITY CONCERNS

✓ for area of CONCERN • for area to MONITOR	FY20 COMMUNITY ASSESS	FY20 BOARD DATA REVIEW	FY21 BOARD DATA REVIEW	FY22 BOARD DATA REVIEW
<b>INDICATOR</b>				
Child Poverty	✓	✓	✓	✓
Childhood Hunger	✓	✓	✓	✓
Mental Health	✓	✓	✓	✓
Emotional Trauma for Youth	✓	✓	✓	✓
Substance Use	✓	✓	✓	✓
Electronic Vaping			✓	✓
Tobacco Use	✓	✓		
Bullying and Harassment	✓	•		
Child Maltreatment			✓	✓
Out of Home Placement		•	•	•
Academic Achievement (racial disparities)			✓	✓
Kindergarten Readiness		•	•	✓
School Attendance		•		✓
High School Drop Out Rate		•	•	•
Births to Adolescents		•		
Juvenile Felony Offenses				•
<b>STRATEGIC PRIORITIES</b>				
Disconnected Youth		•	•	•
Children of Incarcerated Parents		✓	✓	✓
Youth Homelessness		✓	✓	✓
<b>OTHER AREAS OF CONCERN</b>				
Affordable Housing	✓	Not Assessed by the Board	Not Assessed by the Board	✓
Transportation	✓			Not Assessed by the Board
Childcare	✓			
Activities for Youth	✓			
Racism	✓			

# Community Assessment Survey Results

## Top 5 Concerns under Community

COMMUNITY	FY23 ALL	Black	Latine	Other POC	White		FY 20 ALL
Child Abuse/Neglect	3.5	2.94	0	0	4.3		6.74
Child Poverty	13.85	13.04	0	11.11	15.9		18.16
Child Hunger*	12.93	10.45	0	11.11	15.38		12.04
Children Experiencing Homelessness	6.85	8.82	0	11.11	6.77		9.78
Children in Foster Care	5.94	4.55	5.56	11.11	6.38		5.79
Juvenile Crime	7.96	8.82	16.67	11.11	6.88		6.11
Bullying*	21.11	16.42	26.32	11.11	23.16		17.04
Substance Abuse by Parent/Caregiver*	16.04	14.93	15.79	11.11	16.58		19.47
Violence in home	6.99	2.99	0	11.11	9.09		7.79
Crime	5.54	4.41	0	11.11	6.38		6.04
Racism/Racial Inequity*	22.57	29.41	5.56	11.11	22.34		22.44
Families Impacted by Incarceration of a Parent*	9.06	16.18	11.11	22.22	5.88		11.1
Affordable Housing	56.57	57.14	26.32	44.44	60.31		41.16
Trouble Affording Monthly Expenses*	38.14	40.91	21.05	44.44	38.54		31.97
Services not offered in my Language*	5.57	3.03	5.26	11.11	6.38		5.83

Top Responses FY23 Community Assessment

Top Responses FY20 Community Assessment

\* These topics are not identified indicators under Maryland's Results for Child Wellbeing. They are areas raised in Talbot during prior community assessments.

# Community Assessment Survey Results

## Top 5 Concerns under Health

HEALTH	FY23 ALL	Black	Latine	Other POC	White		FY20 ALL
Emotional Trauma in Youth*	17.07	14.06	5.56	33.33	18.85		17.89
Teen Pregnancy	3.53	3.17	11.11	0	3.19		4.28
Mental Health Issues (Depression, Anxiety, ADHD, etc)	39.38	32.84	31.58	44.44	41.67		31.08
Alcohol and Drug Use in Youth*	21.65	21.54	21.05	22.22	22.28		24.87
Youth Suicide Attempts	8.51	4.62	16.67	11.11	9.19		8.37
Obesity in Children and Teens	14.58	15.38	15.79	11.11	14.21		15.8
Youth Vaping	19.57	18.46	21.05	37.5	19.57		N/A
No Health Insurance	18.37	15.87	31.58	12.5	18.09		14.19
Low Birth Weight Babies	1.5	1.59	5.56	0	1.15		1.93
Infant Deaths	1.11	0	0	0	1.68		1.81
Child Immunizations Not up to Date	4.71	0	0	0	7.1		N/A
Lack of Physical Activity by Children/Youth	18.6	19.7	15.79	11.11	18.72		N/A
Children with elevated Lead Levels	0.75	0	0	0	1.15		N/A
Youth Hospitalized Due to Injuries from Assaults	1.12	0	0	0	1.71		N/A

\* These topics are not identified indicators under Maryland's Results for Child Wellbeing. They are areas raised in Talbot during prior community assessments.

# Community Assessment Survey Results

## Top 5 Concerns under School and Work

SCHOOL / WORK	FY23 ALL	Black	Latine	Other POC	White		FY 20 ALL
Youth (16-24) Employment	6.99	11.76	0	0	5.91		10.76
Public Pre-Kindergarten Opportunities	10.04	8.96	0	25	10.56		N/A
High School Grads Not Ready for Higher Ed	15.79	17.65	10.53	14.29	16.13		11.67
Dropping Out of High School	6.86	4.55	15.79	0	7.26		5.62
School Truancy	7.97	6.15	10.53	0	8.94		6.69
Poor Academic Performance	13.21	10.77	10.53	25	13.66		9.6
Students with Disabilities Not Graduating	4.87	4.62	0	0	5.81		N/A
Youth (16-24) Neither Working nor in School	11.81	15.38	16.67	0	10.73		11.57
Children Successful in Kindergarten	4.43	4.62	5.56	0	4.57		3.48
Affordable Quality Early Childcare/ Daycare*	38.87	32.84	31.58	62.5	40.76		26.8
Unemployment*	14.23	26.87	16.67	12.5	9.84		10.64
Transportation*	38.06	34.85	31.58	22.22	40		27.36
Internet Access*	26.22	21.21	5.26	0	30.85		11.53

\* These topics are not identified indicators under Maryland's Results for Child Wellbeing. They are areas raised in Talbot during prior community assessments.

# Population Overview

AGE	NUMBER	PERCENT
Under 5	1,693	4.5%
0-17 years	6,810	18.1%
18 and older	30,816	81.9%
65 and older	11,250	29.9%
Total Pop	37,626	



US Census, Vintage 2021  
Population Est. Program

HOUSEHOLDS (total 16,810)	
Average Family Size	2.74
Total Families	10,452
Male Householder, no spouse present	203
Female Householder, no spouse present	899
Married Couple Household with children under 18	2,229
Grandparent, responsible for grandchildren	291

US Census, 2020 ACS, 5 year estimate



# Population continued

RACE	NUMBER	PERCENT
Black	4,741	12.6%
Hispanic/Latino	2,784	7.4%
White	29,047	77.2%
American Indian	150	.4%
Asian	564	1.5%
Native Hawaiian or PI	75	.2%
Two or more	790	2.1%

Source: US Census, Vintage 2021, Population Estimate Program



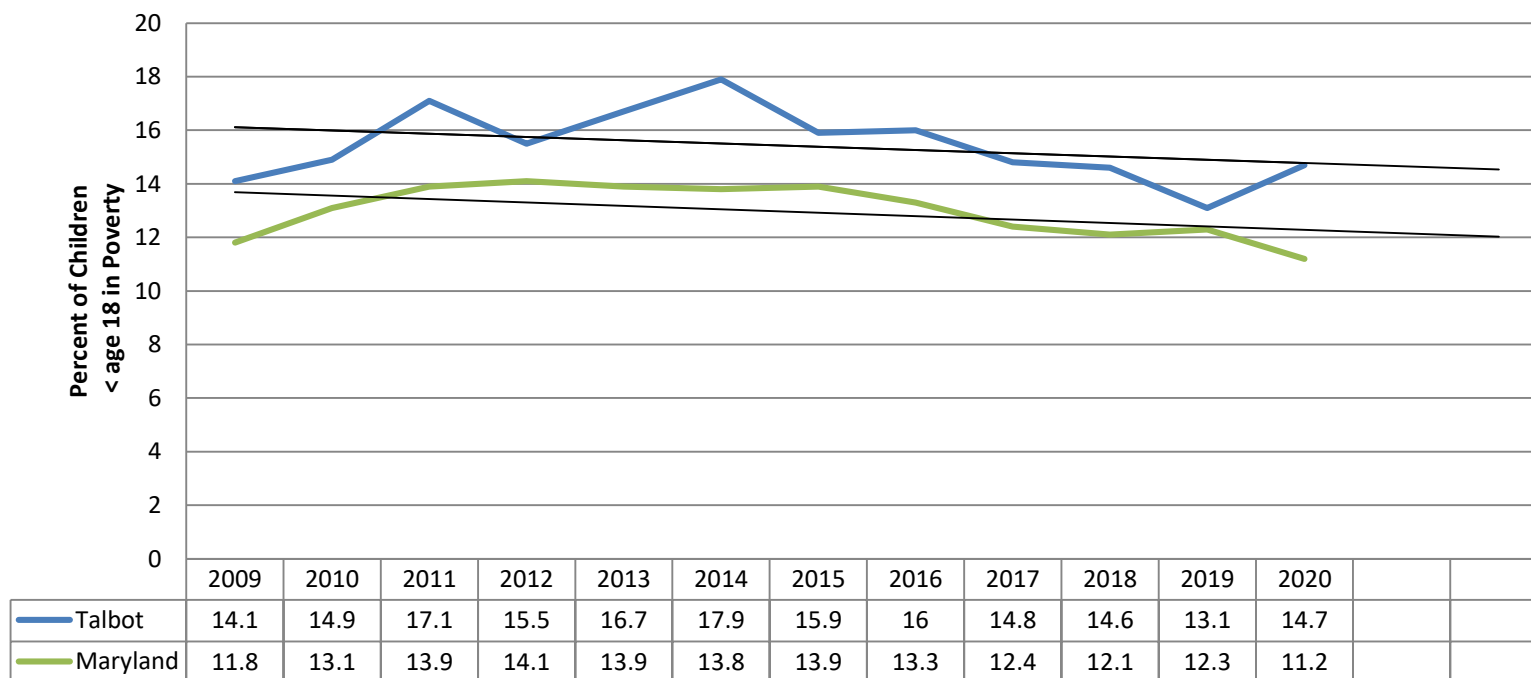
# RESULTS FOR CHILD WELL BEING

Families are Economically Stable

# Child Poverty

FY 13 – Monitor  
 FY 16 – Monitor  
 FY 17 – Monitor  
 FY 18 – Concern  
 FY 19 – Concern  
 FY 20 – Concern  
 FY 21 – Concern  
 FY 22 – Concern  
 FY23 – Concern

## Child Poverty



Source: US Census Bureau, Small Area Income and Poverty, **2020 – this is most recent**



# Indicator: Child Poverty

Poverty	2017		2018		2019		2020	
	Tal	MD	Tal	MD	Tal	MD	Tal	MD
All Ages	3347 9.1%	9.4%	3377 9.2%	9.1%	3210 8.7%	9.1%	<b>3497</b> <b>9.6%</b>	9%
< age 18	994 14.8%	12.4%	967 14.6%	12.1%	872 13.1%	12.3%	<b>957</b> <b>14.7%</b>	11.2%
Families with children age 5-17	708 14.1%	11.6%	673 13.7%	11.6%	631 12.8%	11.9%	<b>897</b> <b>14.1%</b>	10.8%

Source: US Census Bureau, Small Area & Income Poverty Estimates, **2020 – this is most recent**



Individuals Below Poverty	2016		2017		2018		2019	
All ages	Tal	MD	Tal	MD	Tal	MD	Tal	MD
<b>Black</b>	23%	14.7%	20.8%	14.1%	20.6%	13.6%	<b>17.2%</b>	13.3%
<b>Two or More Races</b>	26.4%	12.6%	26.1%	12.2%	15%	11.3%	<b>13.1%</b>	10.9%
<b>Hispanic</b>	29.2%	14%	27.6%	13.8%	27.1%	13.5%	<b>18.3%</b>	12.7%
<b>White</b>	8.8%	7.2%	8.2%	7.1%	7.8%	7%	<b>7.1%</b>	6.7%

Source: US Census, SAIPE 2019 – Latest available

- 572 Households below poverty/16,810 Total Households
- 3.4% of Talbot County Households are below the poverty level.



Source: US Census, ACS, 5 year Estimates, 2020

# ALICE households

## Asset Limited Income Constrained Employed

1

### MARYLAND • 2018 COUNTY PROFILES

Counties are the core geography for ALICE data: They reveal variations often masked by statewide averages, and the data is reported regularly and reliably.

#### ALICE IN TALBOT COUNTY

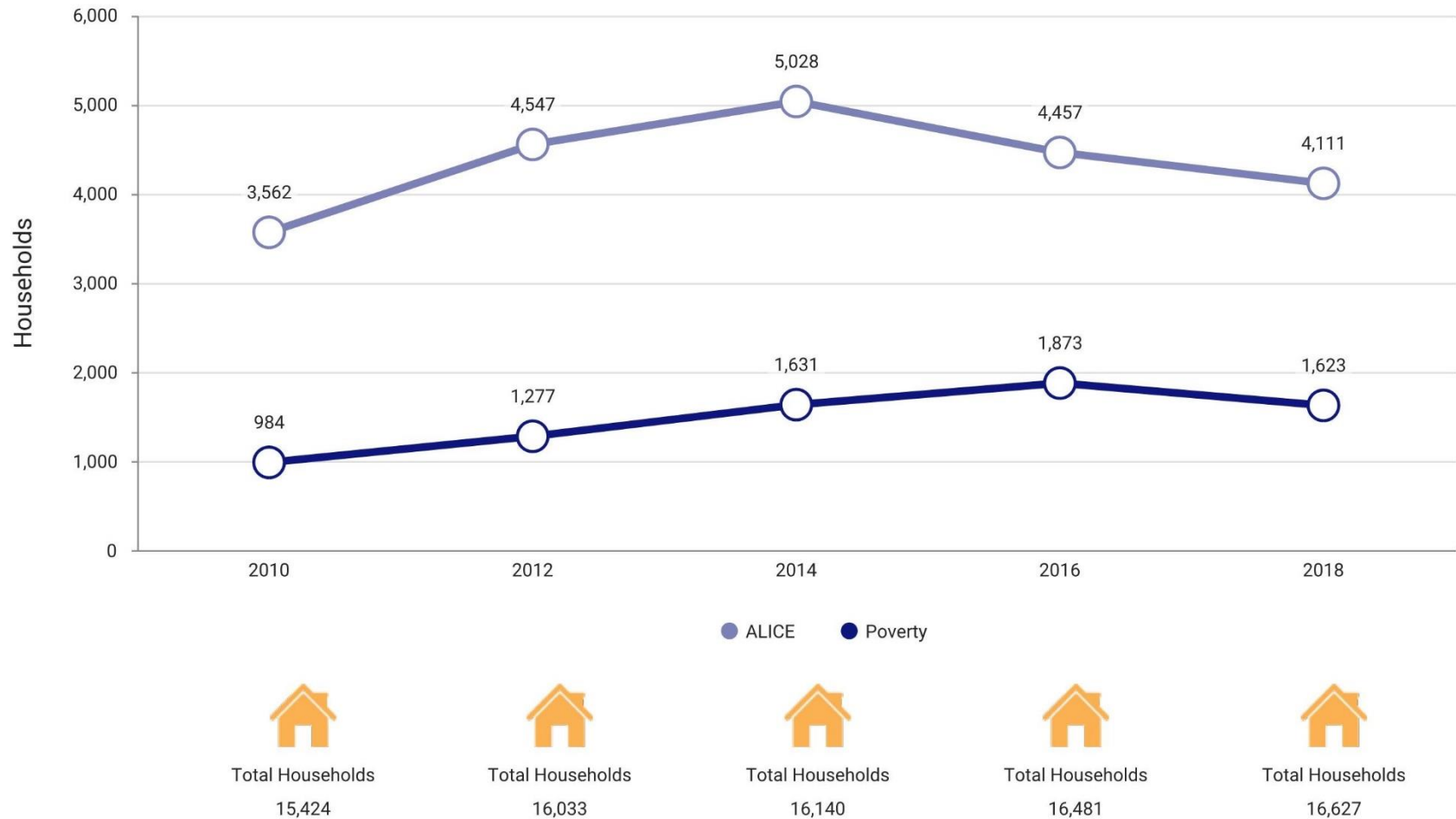
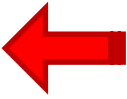
##### 2018 Point-in-Time-Data

<b>Population:</b>	37,211	<b>Number of Households:</b>	16,627
<b>Median Household Income:</b>	\$67,204 (state average: \$83,242)		
<b>Unemployment Rate:</b>	3.3% (state average: 4.9%)		
<b>ALICE Households:</b>	25% (state average: 30%)		
<b>Households in Poverty:</b>	10% (state average: 9%)		



## How Has the Number of ALICE Households Changed Over Time?

**ALICE** is an acronym for **A**sset **L**imited, **I**ncome **C**onstrained, **E**mployed – households that earn more than the Federal Poverty Level, but less than the basic cost of living for the county (the ALICE Threshold). While conditions have improved for some households, many continue to struggle, especially as wages fail to keep pace with the cost of household essentials (housing, child care, food, transportation, health care, and a basic smartphone plan).



# ALICE Households by Zip Code

## Communities with 30% or > ALICE Households

7

Zip Code	Total Households	% Below ALICE Threshold
ZCTA5 21601 <b>Easton</b>	10,447	36%
ZCTA5 21612	178	29%
ZCTA5 21625	1,015	24%
ZCTA5 21647 <b>McDaniel</b>	108	38%
ZCTA5 21654	546	28%
ZCTA5 21662 <b>Royal Oak</b>	231	30%
ZCTA5 21663 <b>St. Michaels</b>	1,635	33%
ZCTA5 21665	113	16%
ZCTA5 21671 <b>Tilghman</b>	380	50%
ZCTA5 21673 <b>Trappe</b>	1,431	33%
ZCTA5 21676 <b>Wittman</b>	204	36%
ZCTA5 21679	136	15%

Sources: ALICE Threshold, 2007-2018; American Community Survey, 2007-2018

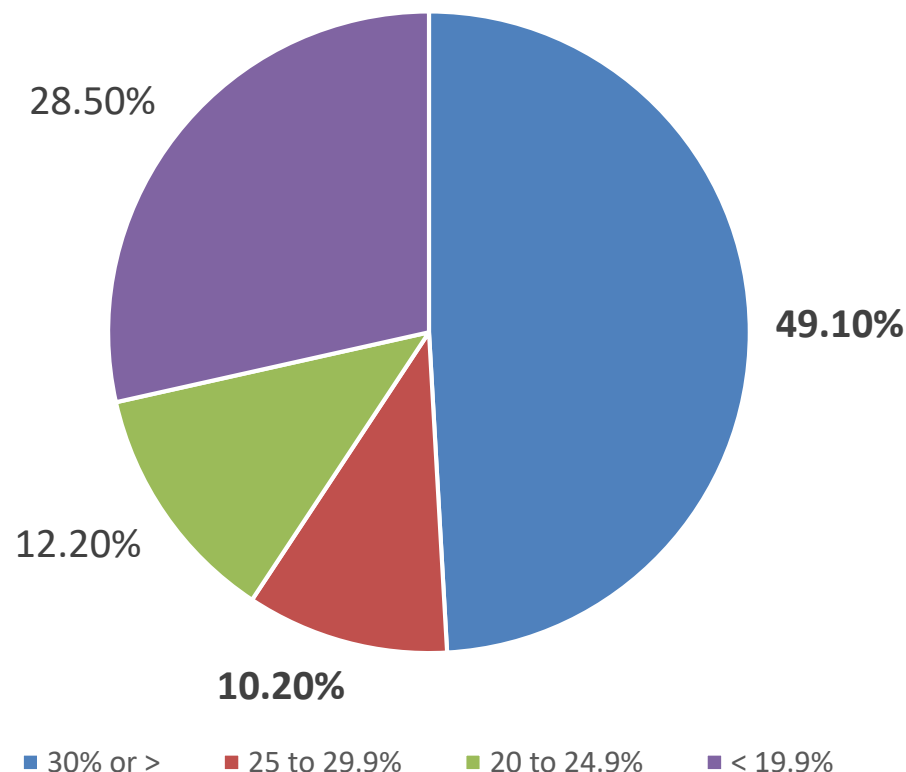




# Housing

**AFFORDABLE  
HOUSING**  
FY 22 – Concern  
FY23 – Concern

% of Income Spent on Rental Housing

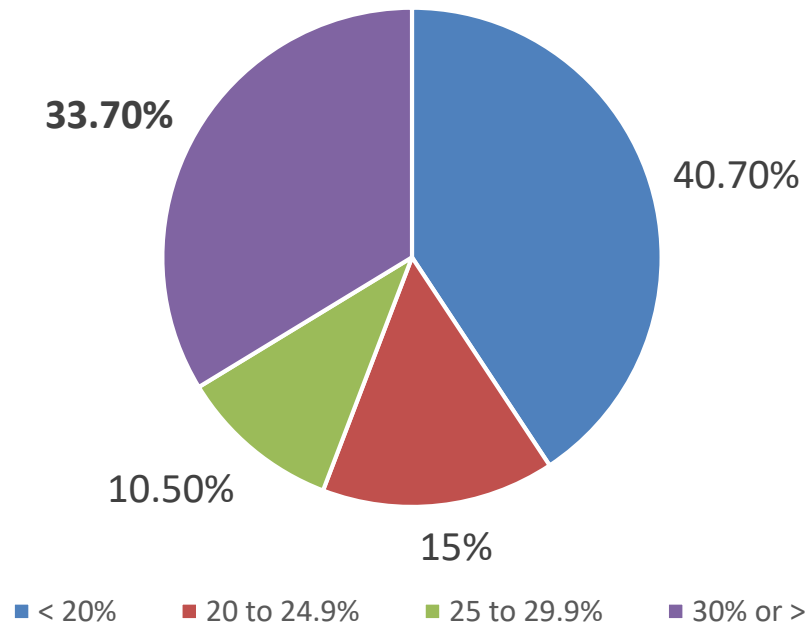


Source: US Census, 2016-2020 ACS, Most recent

Note – This includes utility costs.

# Housing

% of income spent on selected monthly owner costs



Source: US Census, 2016-2020 ACS, Most recent

Note – This includes all costs associated with owning a home – mortgage, second mortgage, insurance, utilities, etc.

# Owner Occupied Homes by Race

Race	Number	% of Home Owners	Percentage of Talbot Pop
American Indian	15	.13%	.4%
Asian	172	1.4%	1.5%
Black	745	6.2%	12.6%
Two or More Races	384	3.2%	2.1%
Other	36	.3%	
White	10,617	88.7%	77.2%
Hispanic	268	2.2%	7.4%

Total Owner Occupied Homes = 11,969

Source: US Census, American Community Survey, 2020, 5 year Estimate

# Housing and Food Insecurity NEXUS

*“The **root cause of hunger and housing are inseparably intertwined**. Researchers have found that the relationship between food insecurity and housing are highly correlated over time: Neighbors with a higher risk of housing instability are more likely to be food insecure and vice versa.”*

## On Food Insecurity

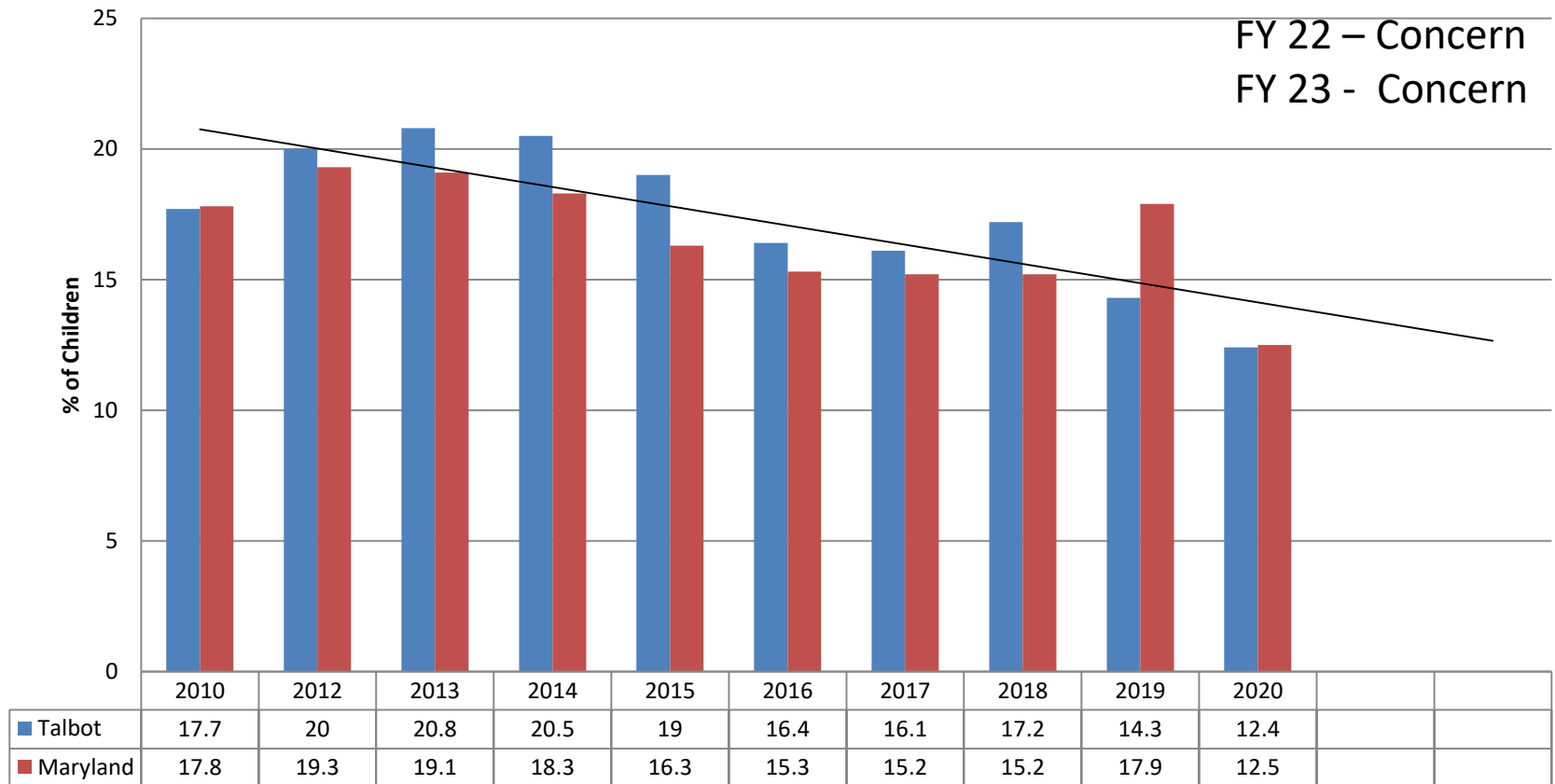
From a May 2021 study by John Hopkins Bloomberg School of Public Health which found that 28.8% of Marylanders were food insecure:

*“Eastern Shore residents reported the highest percentage of households with food insecurity (58%) among Black, Indigenous, and people of color (BIPOC) residents compared to other regions.”*

# Indicator: Hunger

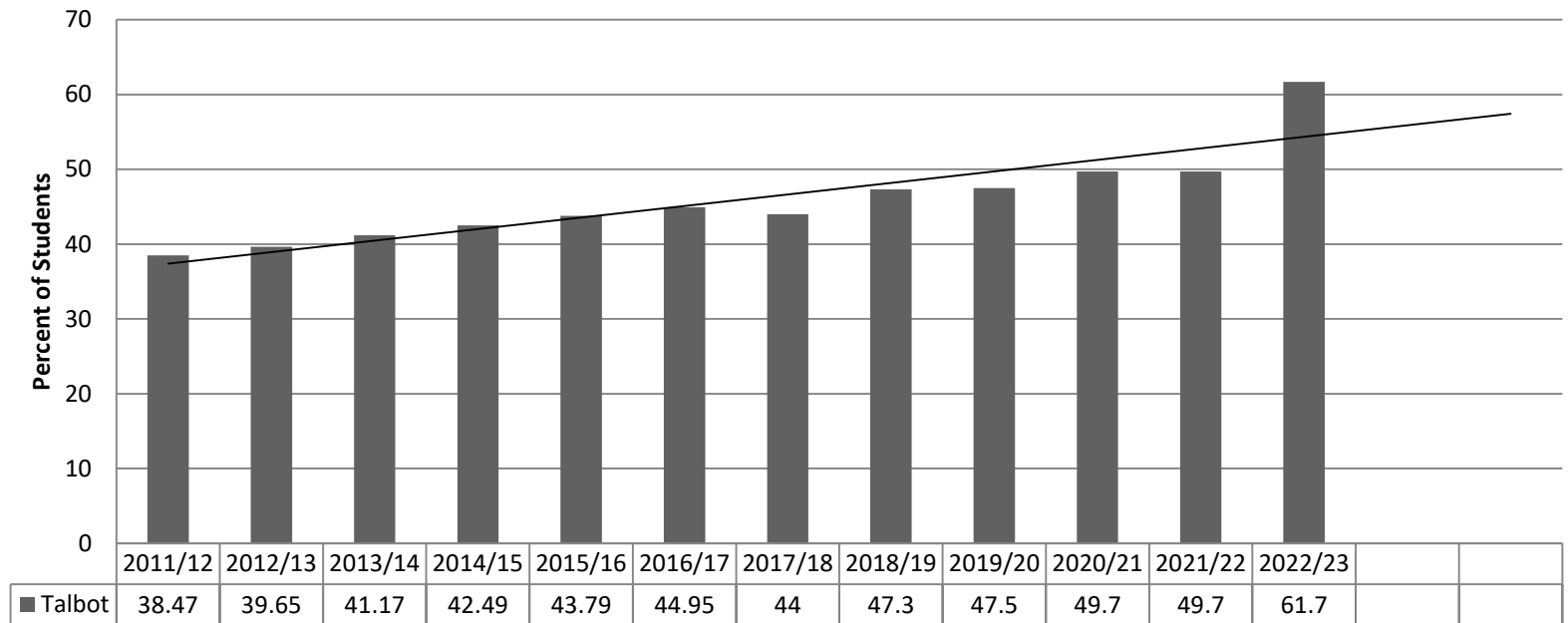
FY 13 – Concern  
 FY 16 – Concern  
 FY 17 – Concern  
 FY 18 – Concern  
 FY 19 – Concern  
 FY 20 – Concern  
 FY 21 – Concern  
 FY 22 – Concern  
 FY 23 - Concern

## Child Food Insecurity



Source: Feeding America  
 Map the Meal Gap 2020)

## Free and Reduced Meals Talbot County Public Schools



Source: TCPS, 1/22

**FY 14 = 1,931 students   FY 15 = 2,038   FY 16 = 2,074   FY 17 = 2,135   FY18 = 2,098**  
**FY 19 = 2,248   FY 21 = 2,231   FY 22 = 2,252   FY23 = 2,822**

Free Meals = 100% or less of Federal Poverty Guidelines  
 Reduced Meals = 100-185% of Federal Poverty Guidelines

# Hunger and Race

<b>Race</b>	<b>Race as % of School System Population</b>	<b>Students receiving FaRMs</b>
<b>White</b>	<b>52%</b>	<b>34.9% (825/2359)</b>
<b>Black</b>	<b>15%</b>	<b>84.8% (582/686)</b>
<b>Hispanic</b>	<b>25%</b>	<b>89.9% (1037/1153)</b>
<b>Two or more</b>	<b>6%</b>	<b>63.4% (177/279)</b>

Source: TCPS, 2/23

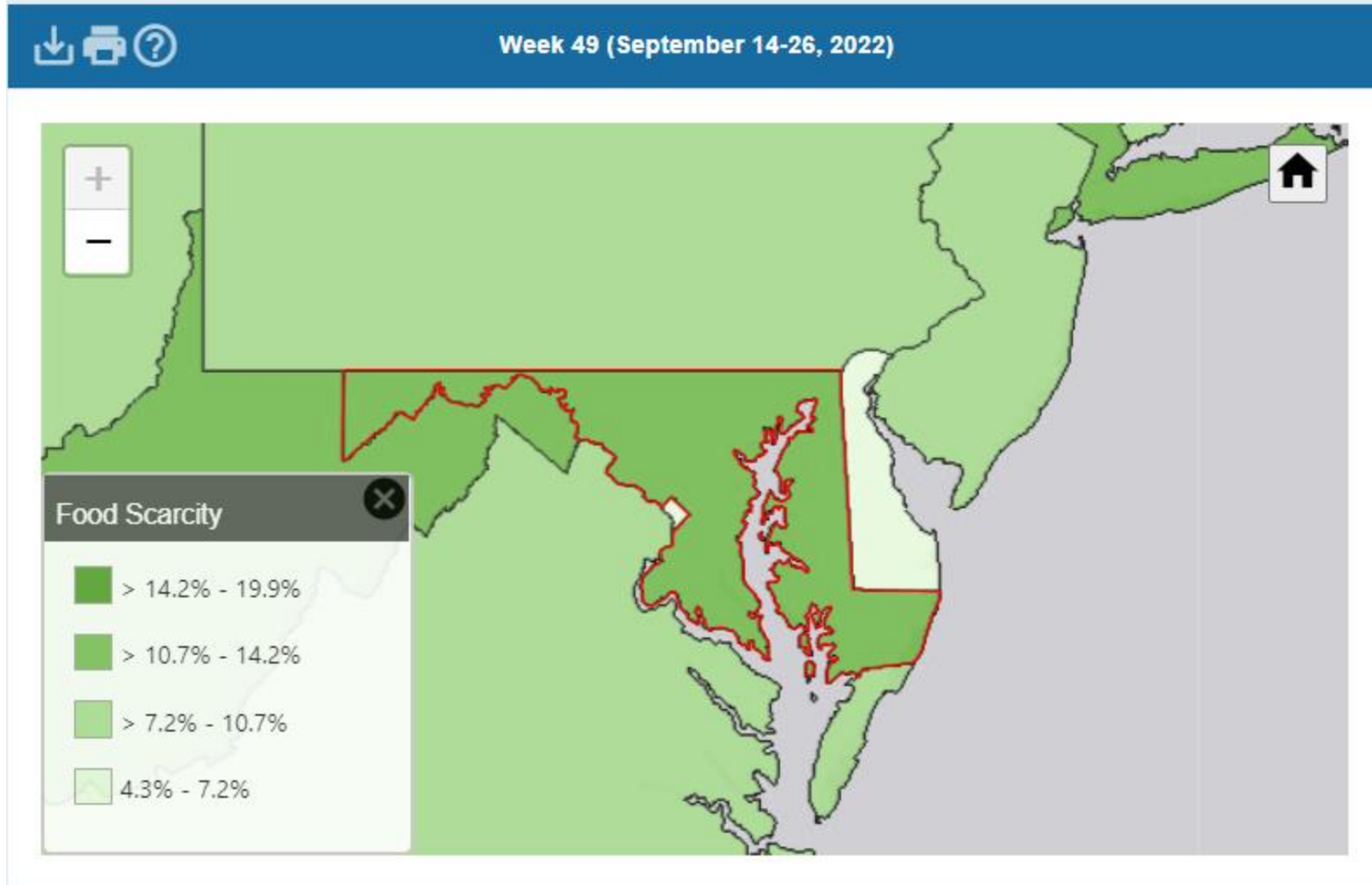
# FARMS by School

School	FaRMs	School Enrollment	FaRMs % (Prior Yr)
Chapel Elem	122	348	43.8% (34.8%)
Easton Elem	729	1,101	77.2% (67.8%)
Easton High	512	1,207	57.3% (43.5%)
Easton Middle	431	747	70.4% (52.2%)
St. Michaels Elem	139	336	46.8% (42.6%)
St. Michaels Middle/High	149	450	49.1% (34.8%)
Tilghman Elem	36	96	58.3% (38.7%)
White Marsh Elem	134	288	55.9% (47.0%)



## FOOD SCARCITY

% of adults in households where there was either sometimes or often not enough to eat in the last 7 days.

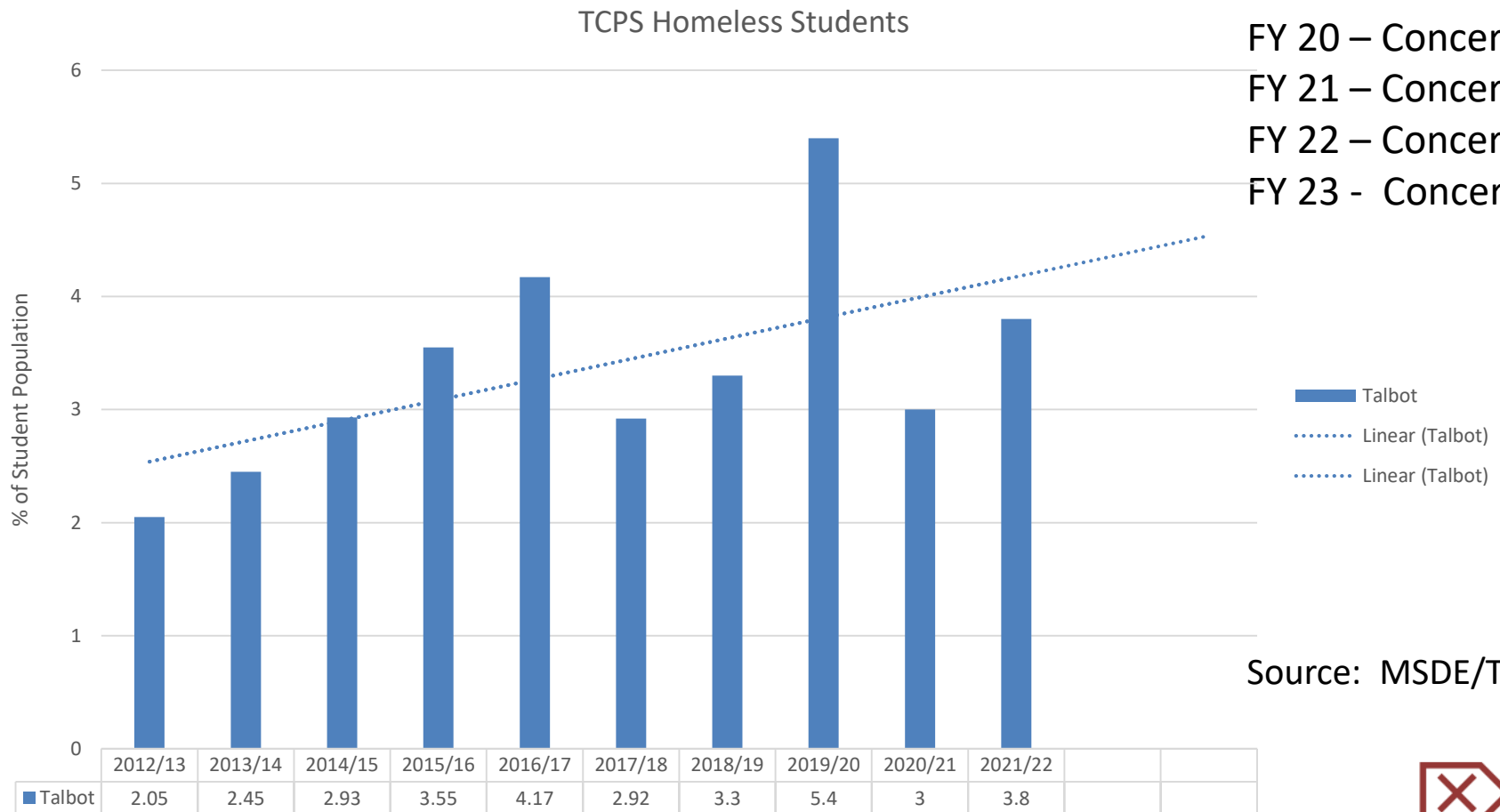


Talbot estimate at 10.3% = 1,731 households

Source: Household Pulse Survey

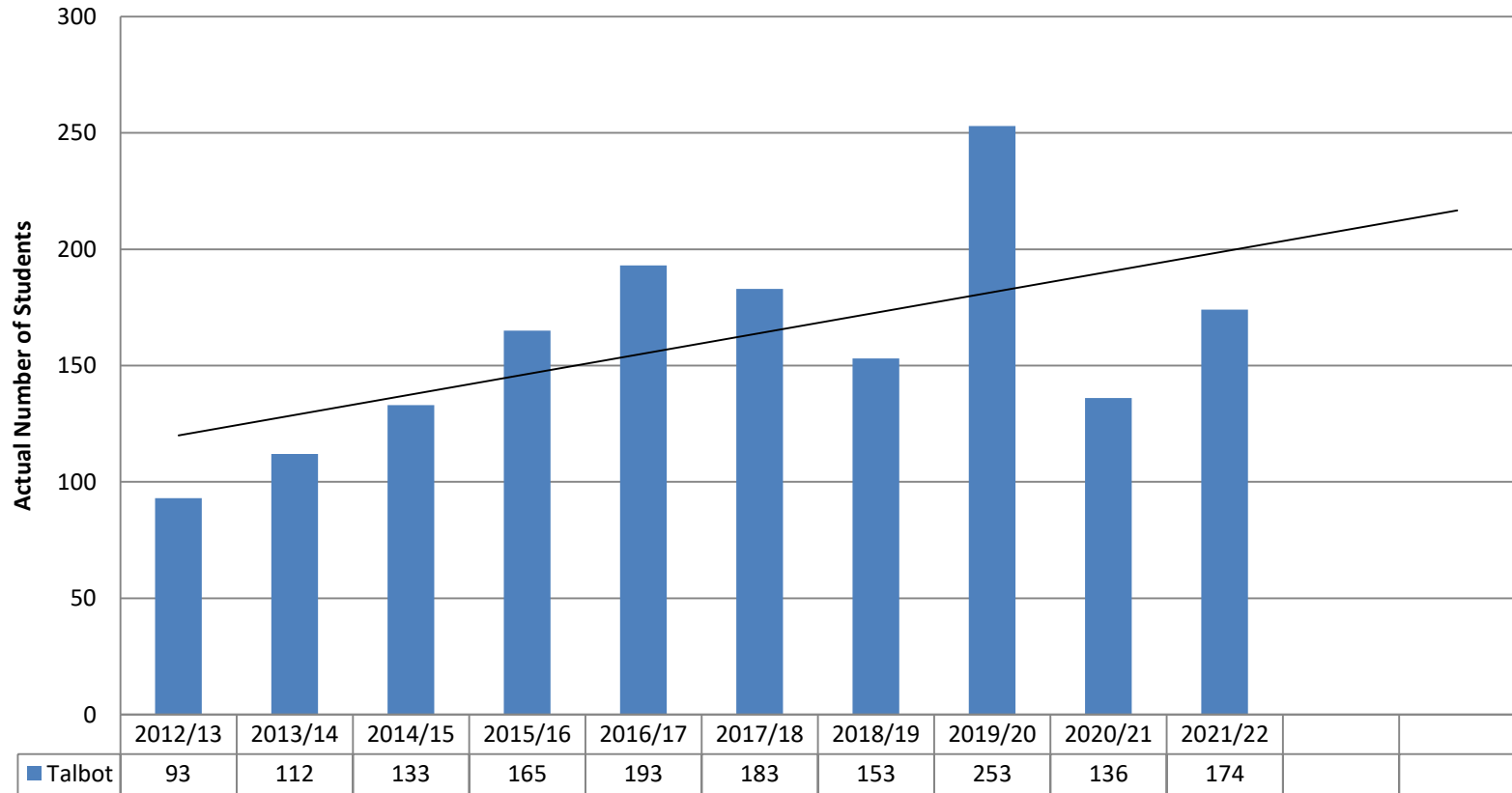
# Indicator: Homelessness

FY 13 – Monitor  
 FY 16 – Concern  
 FY 17 – Concern  
 FY 18 – Concern  
 FY 19 – Concern  
 FY 20 – Concern  
 FY 21 – Concern  
 FY 22 – Concern  
 FY 23 - Concern



FY22 NOTE: Concern that this indicator may be underreported while students were not in school or attending virtually/hybrid during the pandemic

## TCPS Homeless Students



**2019/20** – 5.4% of total TCPS population. Percent by race of total homeless Hispanic- 62%, AA-19%, White – 10%, Multi-race – 8%

**2020/21** – 3% of total TCPS population. Percent by race of total homeless Hispanic- 59%, AA – 18%, White 19%, Multi-race – 4%

**2021/22** – 3.8% of total TCPS population. Percent by race of total homeless Hispanic- 67.8%, AA-10.9%, White- 14.9%, Multi-race -6.3%

# Impact of Incarceration on Children and Families

FY21 – Concern

FY22 – Concern

FY23 – Concern

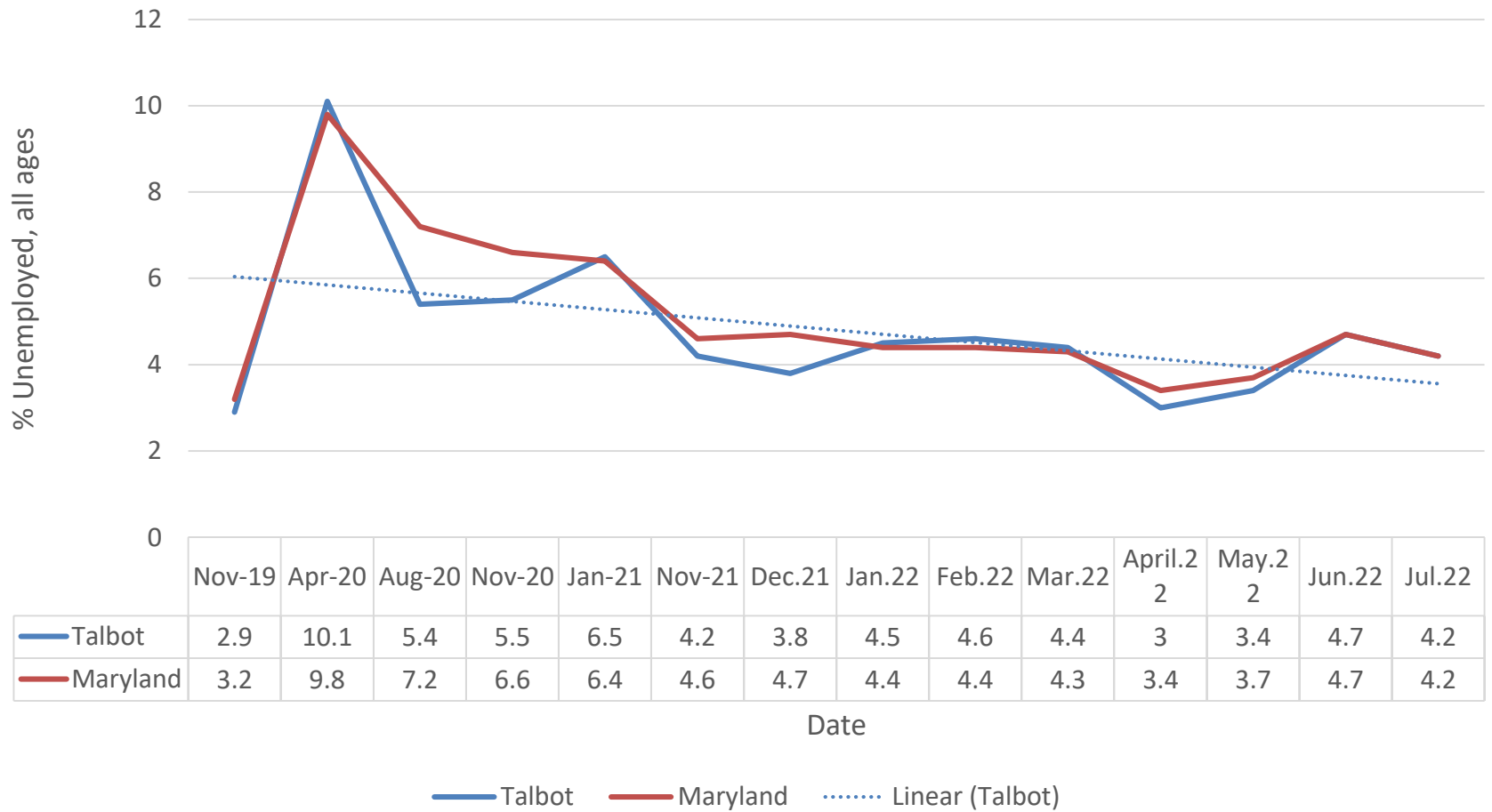
- The total **census** at Talbot County Department of Corrections was 95 as of Sept 2, 2022. At home on pre-trial supervision are 27 individuals. (Demographics next slide)
- 106 Talbot citizens (3 female, 103 male) are incarcerated in MD State Prisons. 62% are inmates of color. (MD Department of Public Safety and Correctional Services, Sept. 2022)
- 608 Talbot Citizens on Parole or Probation. 25% Female. 72% white, 24% Black and 4% Other or Unknown. (MD Department of Public Safety and Correctional Services, Sept. 2022)
- According to BJS nationally (state and federal) 71% of male and 53% of female inmates are of color. (BJS – Prisoners in 2019)
- Nationally 47.4% of male and 57.7% of female inmates are **parents**. (BJS, 2021 report based on 2016 data – most recent)

# Talbot County Detention Center

In-house	Total Population with TCDC	Percent	vs. Total Talbot Population
Male	87	92%	47.3%
Female	8	8%	52.7%
White	35	37%	77.2%
Black/AA	52	55%	12.6%
Hispanic	8	8%	7.4%
Asian	0	0%	1.5%

Sources: Talbot County Detention Center and US Census, ACS, 5 yr Estimate, 2021

# Unemployment During Pandemic All Ages



Source: Maryland Monthly Labor Review – July 2022 is most recent available

Race (All ages in workforce) Talbot	Unemployment Rate					
	2015	2016	2017	2018	2019	2020
White	6.1%	5.5%	3.8%	2.8%	2.5%	2.4
Black	8%	9.1%	7.1%	4.6%	7.9%	4.3
Two or More races	19.1%	9.3%	18%	12.1%	10.7%	9.5
Latino	6.4%	1.0%	.9%	1.1%	1.2%	1.3
Other	8.2%	8.4%	4.3%	3.8%	0%	0

Source: US Census Bureau, ACS, 2020, 5 yr Estimates, Employment – most recent

Talbot County Census data from **2020** shows **11.7%** of individuals employed part-time lived below the poverty level, while only **1.6%** of individuals employed full-time were considered below poverty level. This trend is reflected across the country.

(US Census, ACS **2019**, 5 year estimates)



# Family Economic Stability Survey 2022

Conducted May 23-July 11, 2022

Total Respondents – 210

- **Race**

17.6% Black    16.6% Latine    6.1% Other POC    60% White

- 50% Live and Work in Talbot | 40% Live | 10% Work in Talbot

- 89% Female, 71% with Children under age 18 in the home

- **Age Ranges**

Age 18-34=32%    Age 35-44=43%    Age 55 and over=25%

- **Household Income**

<\$15,000=12%    \$15,000-\$29,999=14%    \$30,000-\$49,999=27%

\$50,000-\$74,999=20%    \$75,000-\$99,999=7%

\$100,000-\$150,000=14%    \$150,000-\$250,000=5%

>\$250,000=2%    (63% w/ income <\$49,999)

- Means Tested Benefits (SNAP, WIC, MA, TCA, etc.)

47% enrolled in at least one

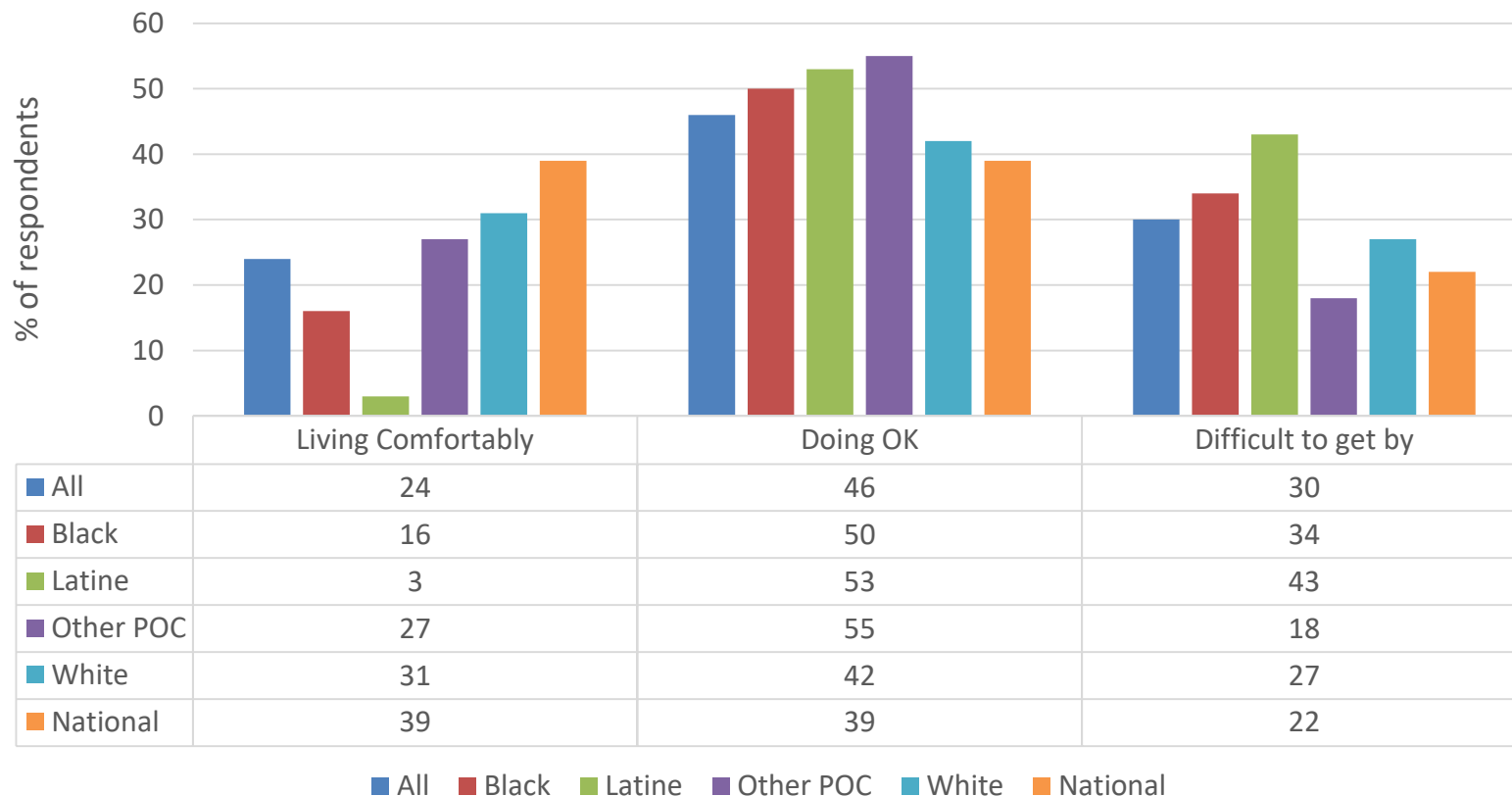
- Included 48 responses from **CAREs Funds** recipients



# Family Economic Stability Survey 2022

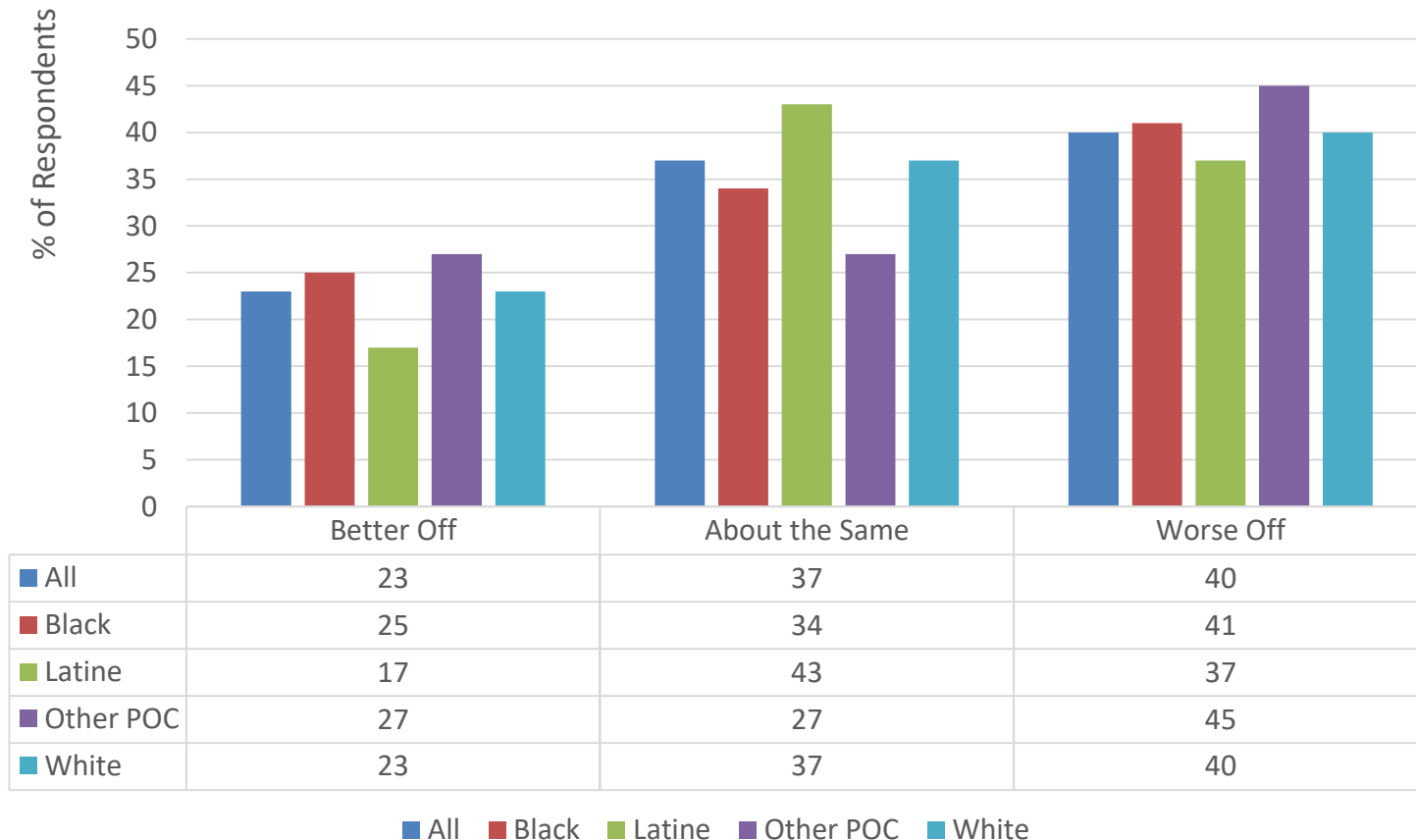
## HIGHLIGHTS

How well are you managing financially these days?



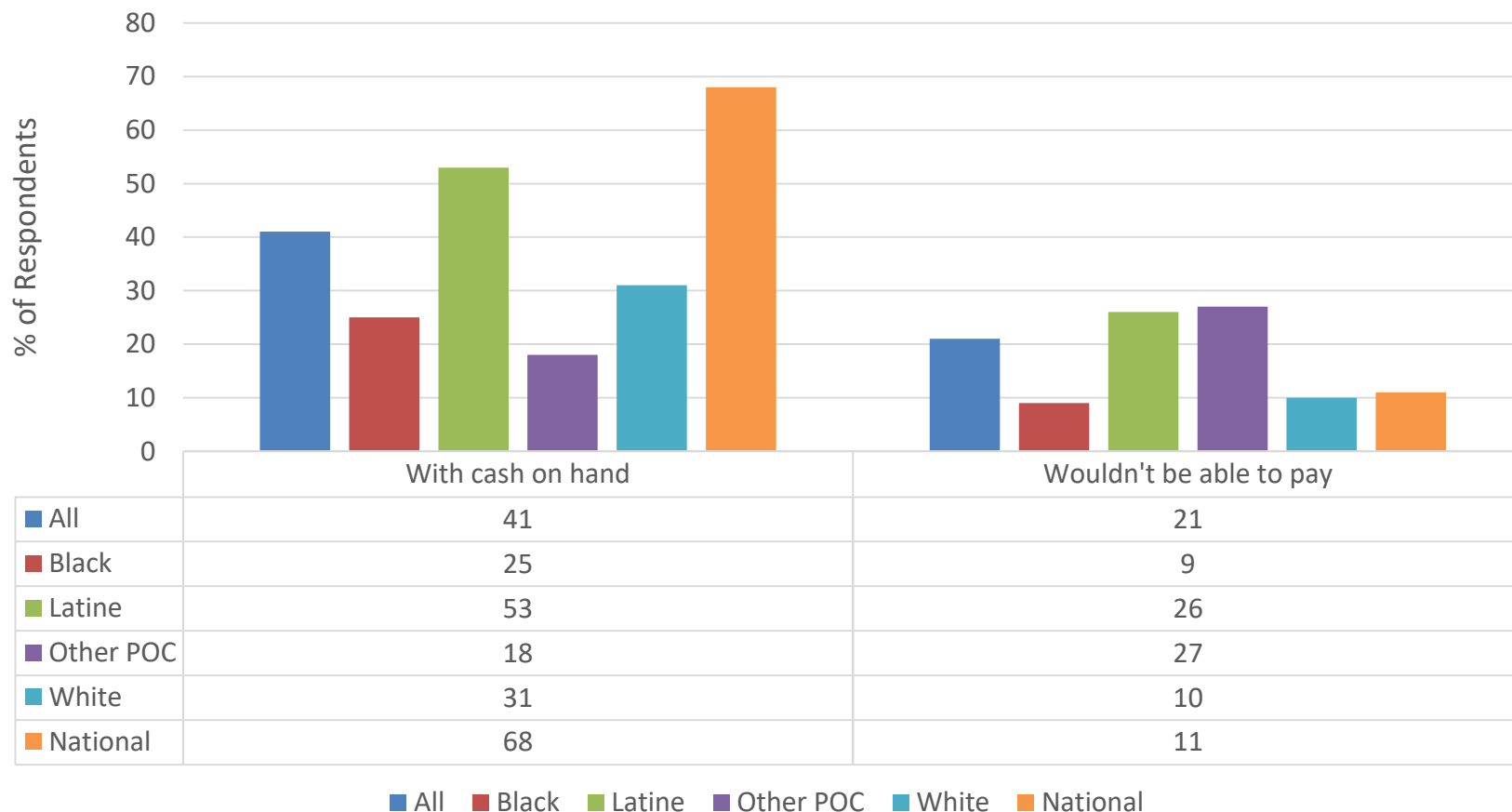
Source: TFN, Family Economic Stability Survey, 2022

Compared to 3 years ago (2019), would you say you (and your family) are better off, the same or worse off financially?



Source: TFN, Family Economic Stability Survey, 2022

Suppose that you have an emergency expense that costs \$400.  
Based on your current financial situation, how would you pay for  
this expense?



Source: TFN, Family Economic Stability Survey, 2022



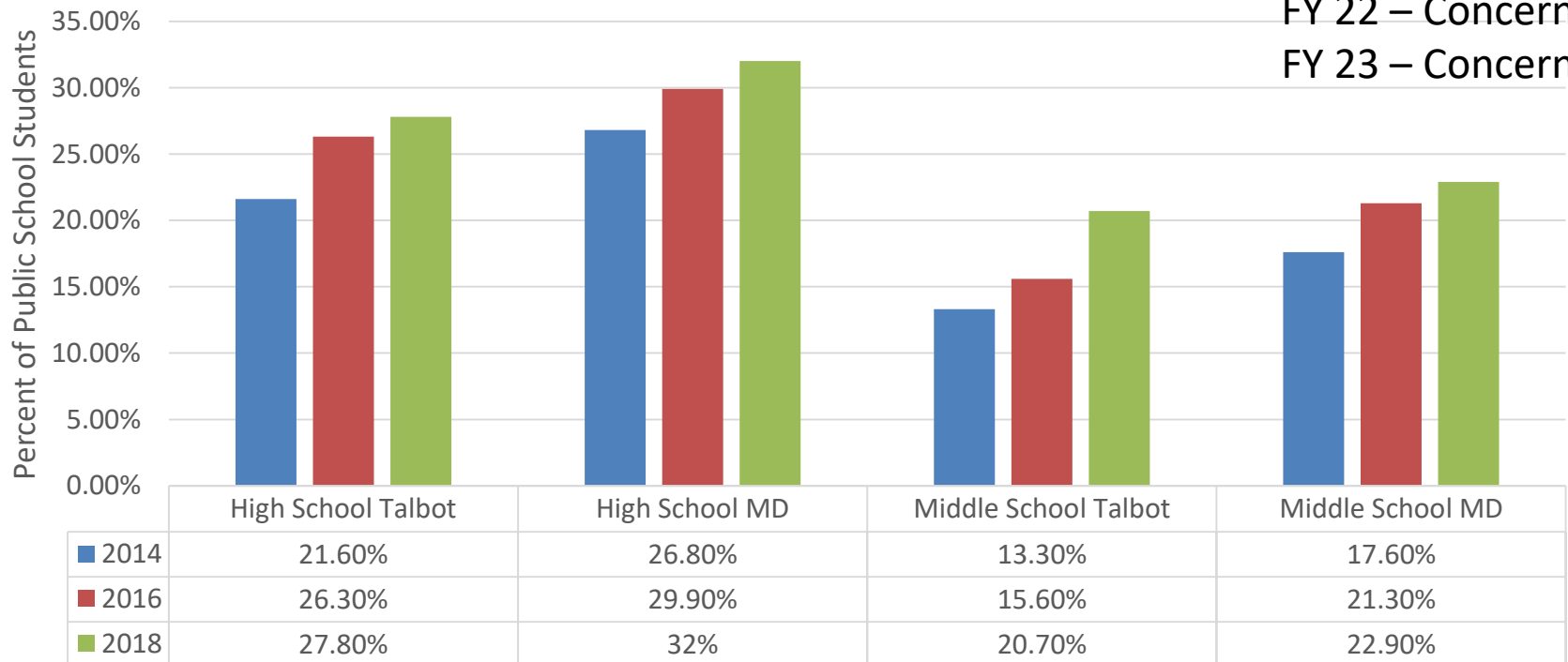
# RESULTS FOR CHILD WELL BEING

Healthy Children

# Mental Health

FY 13 – Concern  
 FY 16 – Concern  
 FY 17 – Concern  
 FY 18 – Concern  
 FY 19 – Concern  
 FY 20 – Concern  
 FY 21 – Concern  
 FY 22 – Concern  
 FY 23 – Concern

## Depressive Episode Public School Student Self Reporting



■ 2014 ■ 2016 ■ 2018

**2018 is most recent data**

Source – YRBS – High School QN25 & Middle School QN14

The Question asked - During the past 12 months, did you ever feel so sad or hopeless almost every day for two weeks or more in a row that you stopped doing some usual activities?



# Mental Health

% of Talbot High School Students, by sub group, that report depressive episode	2014	2016	2018
White	21.2%	25.4%	<b>27%</b>
Black	16.8%	20.2%	<b>25.7%</b>
Hispanic	27.8%	34%	<b>25.7%</b>
LGBQ	56.9%	53.3%	<b>55.1%</b>
Heterosexual	17.3%	22.9%	<b>24.5%</b>



Source: Youth Risk Behavior Survey, Maryland, Talbot County

***2018 is most recent data***

# School-Based MH Services

School Year	# of NEW Students Referred to School Based Mental Health	Notes
2012-13	206	
2013-14	188	
2014-15	177	
2015-16	183	
2016-17	178	
2017-18	247	
2018-19	283	
2019-20	248	3.5 months virtual school
2020-21	210	Hybrid school year
<b>2021-22</b>	<b>426 (+400 students receiving services)</b>	

Source: TCPS, Rob Schmidt, MH Coordinator, June 2022

# Risk Assessment Data

## Talbot County Public Schools

	2017/18	2018/19	2019/20 (COVID)	2020/21 (COVID)	2021/22 YTD
Child & Adolescent Risk Evaluation <sup>2</sup> (CARE2) Threat Assessment	56	87	49	22	<b>99</b>
Risk Identification Suicide Kit <sup>2</sup> (RISK2) Suicide Risk Assessment	154	209	170	60	<b>166</b>
			School virtual 3.1 months	School virtual or part-time 4 months at start of yr	<b>Also, 61 Substance Use Referrals Made.</b>



The image shows the cover of a report. It has a dark teal background. In the center, there is a faint, circular seal of the U.S. Surgeon General. Overlaid on the seal is the title 'PROTECTING YOUTH MENTAL HEALTH' in large, bold, white, sans-serif capital letters. Below the title, in a smaller, white, italicized serif font, is the subtitle 'The U.S. Surgeon General's Advisory'. At the bottom center, there is a small white box containing the year '2021'.

# PROTECTING YOUTH MENTAL HEALTH

*The U.S. Surgeon General's Advisory*

2021

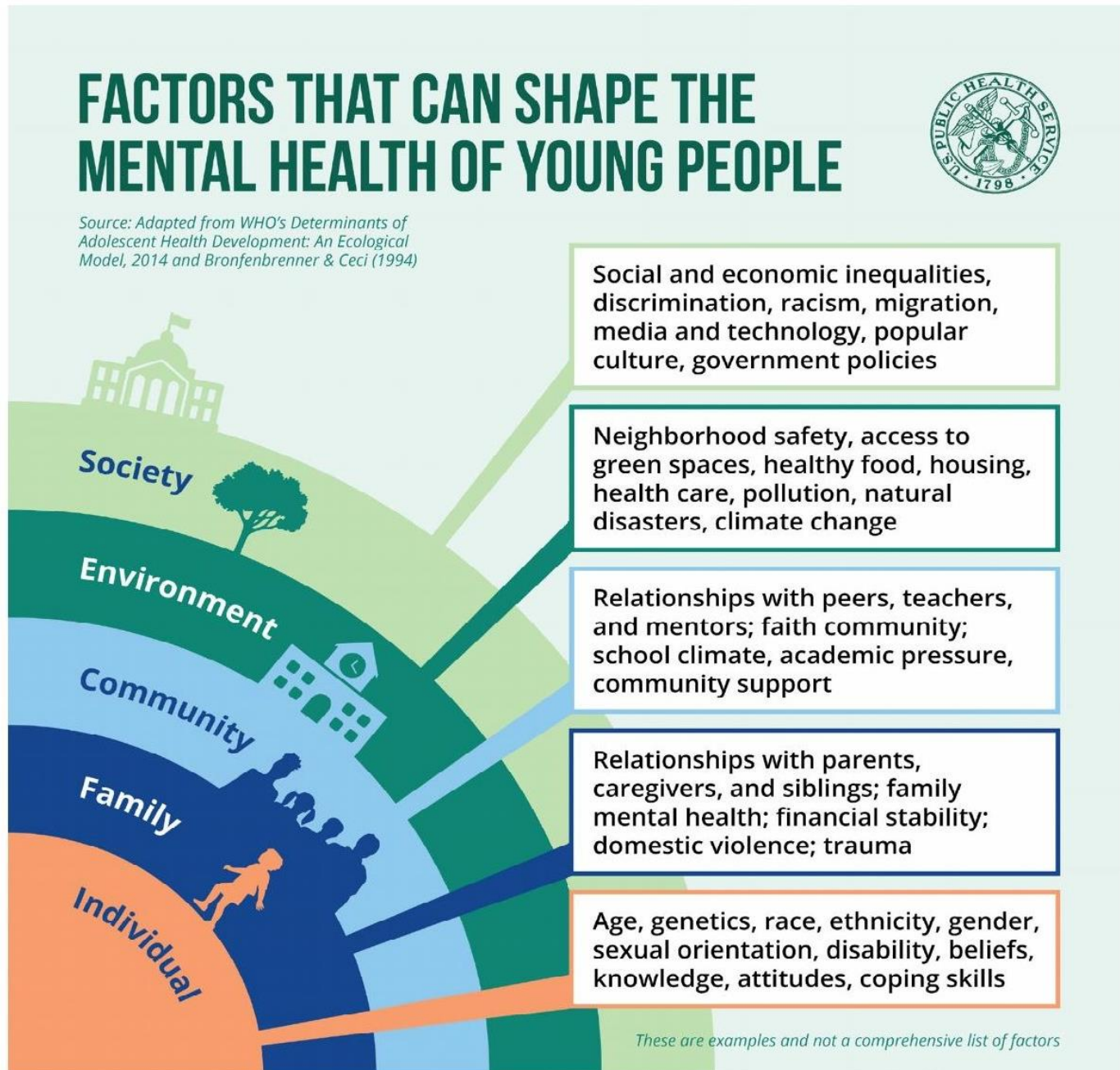
A Surgeon General's Advisory is a public statement that calls the American people's attention to an urgent public health issue and provides recommendations for how it should be addressed.

**Advisories are reserved for significant public health challenges that need the nation's immediate awareness and action.**

For a copy of the report, go to:

<https://www.hhs.gov/sites/default/files/surgeon-general-youth-mental-health-advisory.pdf>

FIGURE 1



## GROUPS AT HIGHER RISK OF MENTAL HEALTH CHALLENGES DURING THE PANDEMIC

*Note: Not a comprehensive list of groups or risk factors*

**Youth with intellectual and developmental disabilities (IDDs)**, who found it especially difficult to manage disruptions to school and services such as special education, counseling, occupational, and speech therapies<sup>78, 79, 80, 81, 82</sup>

**Racial and ethnic minority youth,<sup>83</sup> including:**

- **American Indian and Alaska Native youth**, many of whom faced challenges staying connected with friends and attending school due to limited internet access<sup>84</sup>
- **Black youth**, who were more likely than other youth to lose a parent or caregiver to COVID-19<sup>42</sup>
- **Latino youth**, who reported high rates of loneliness and poor or decreased mental health during the pandemic<sup>85, 86</sup>
- **Asian American, Native Hawaiian, and Pacific Islander youth**, who reported increased stress due to COVID-19-related hate and harassment<sup>87, 88</sup>

**LGBTQ+ youth**, who lost access to school-based services and were sometimes confined to homes where they were not supported or accepted<sup>89, 90</sup>

**Low-income youth**, who faced economic, educational, and social disruptions (for example, losing access to free school lunches)<sup>91</sup>

**Youth in rural areas**, who faced additional challenges in participating in school or accessing mental health services (for example, due to limited internet connectivity)<sup>92</sup>

**Youth in immigrant households**, who faced language and technology barriers to accessing health care services and education<sup>93</sup>

**Special youth populations**, including youth involved with the juvenile justice, or child welfare systems, as well as runaway youth and youth experiencing homelessness<sup>61, 94, 95, 96</sup>

**Additional considerations:**

- **Youth with multiple risk factors.** Many young people are part of more than one at-risk group, which can put them at even higher risk of mental health challenges. For example, children with IDD who lost a parent to COVID-19, or Black children from low-income families, may require additional support to address multiple risk factors.<sup>97</sup>
- **Discrimination in the health care system.** Some groups of youth and their families, such as people of color, immigrants, LGBTQ+ people, and people with disabilities, may be more hesitant to engage with the health care system (including mental health services) due to current and past experiences with discrimination.<sup>97, 98, 99</sup>
- **Risks of COVID-19 to children with mental health conditions.** Children with mood disorders, such as depression and bipolar disorder, as well as schizophrenia spectrum disorders, are at elevated risk of severe COVID-19 illness.<sup>100, 101, 102</sup>

## The U.S. Surgeon General's Advisory WE CAN TAKE ACTION

---

For a copy of the report, go to:

<https://www.hhs.gov/sites/default/files/surgeon-general-youth-mental-health-advisory.pdf>

## WHAT COMMUNITY ORGANIZATIONS CAN DO

Pages 29-30

## WHAT FUNDERS AND FOUNDATIONS CAN DO

Pages 31-32



# Maryland Youth Pandemic Behavior Survey 2021 MD YPBS-21



The Maryland Department of Health conducted an online survey in the spring of 2021 that focused on how students were coping with the pandemic.

*The pandemic has significantly affected Maryland high school students in many ways, including struggles with mental health, tobacco use, alcohol and drug use, trouble with schoolwork, and verbal or physical abuse at home.*

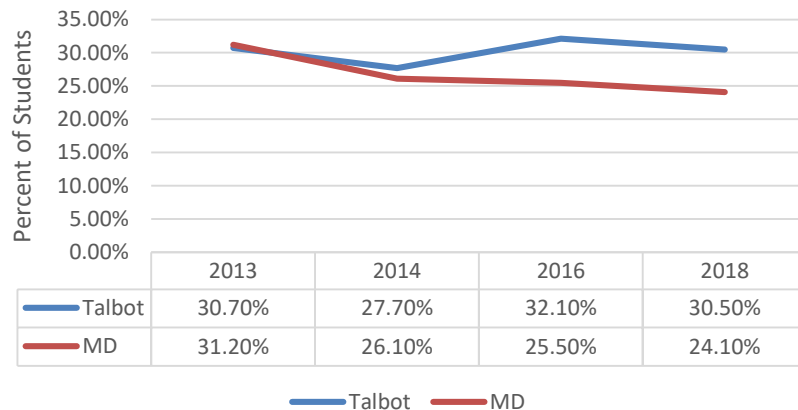
- 27% used more tobacco products during the pandemic
- 37% used more illegal drugs during the pandemic
- 29% drank alcohol more often during the pandemic
  - Students from the Eastern Shore region (Caroline, Cecil, Dorchester, Kent, Queen Anne's, Somerset, Talbot, Wicomico, and Worcester) have been drinking alcohol significantly more compared to the statewide average (40%).
- Nearly 3 in 5 high school students struggled with mental health issues the past year.
- Black or African American students (53%) and LGBT students (75%) struggled significantly more with their mental health during the pandemic compared to the general population (36%).

# Local Indicator: Substance Use

FY 13 – Concern  
FY 16 – Concern  
FY 17 – Concern  
FY 18 – Concern  
FY 19 – Concern  
FY 20 – Concern  
FY 21 – Concern  
FY 22 - Concern

FY 23 - Concern

Public School students reporting one or more alcohol drinks in last 30 days



YRBS, QN 26 Middle School  
Ever had a drink of alcohol  
2013 N= 606 22.3%= 135 students  
2014 N=666 17%= 113 students  
2016 N=533 22.7%=121 students  
2018 N=698 20.4%=142 students

Data Source: YRBS, QN 41

Actual Number

2013 N=770 30.7% = 236 students

2014 N=875 27.7%=242

2016 N=1,026 32.1%=329

2018 N=974 30.5%=297

**2018 is most recent data**



Data Source: YRBS, QN 52

Actual Number

2013 N=824 8%=66 students

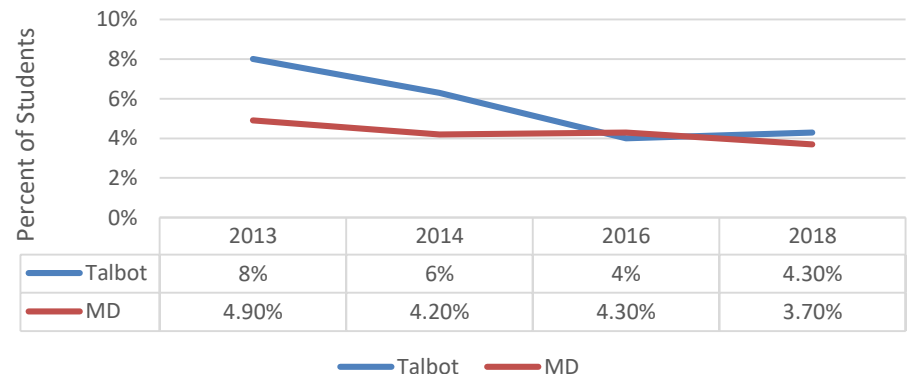
2014 N=929 6.3%=58

2016 N=1,088 4%=44

2018 N=1008 4.3%=43

Students reporting heroin use at least once in  
lifetime

Public 9-12 graders

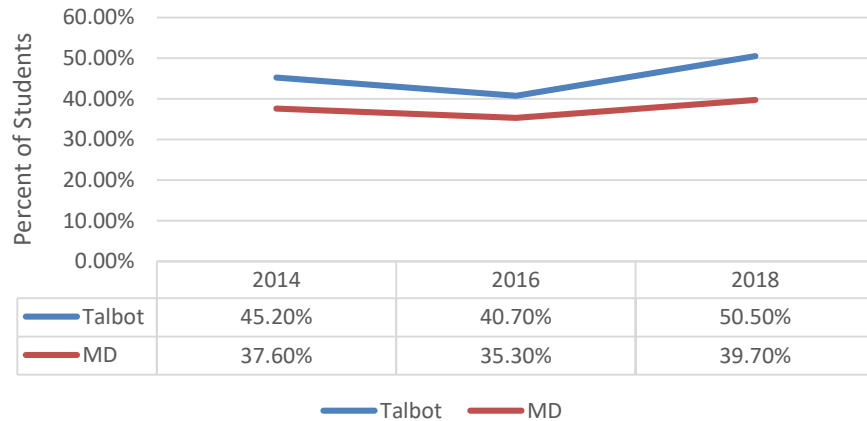


# Indicator: Electronic Vaping

New FY21

FG

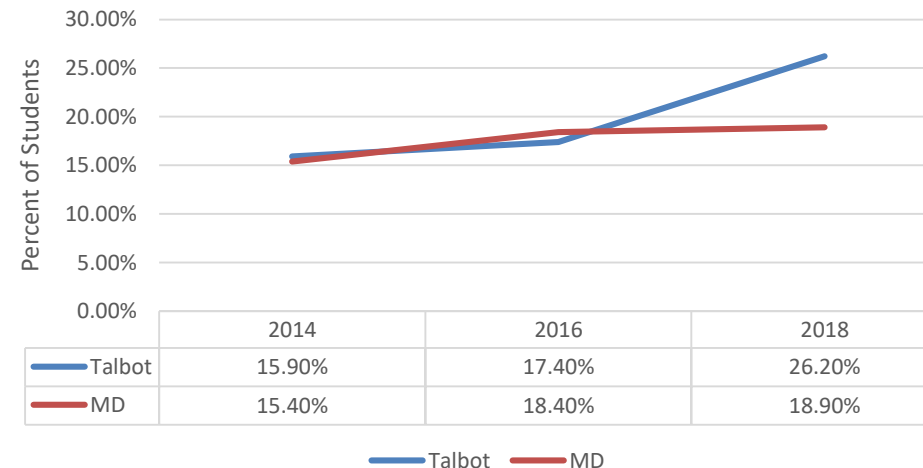
High School Students reporting Electronic Vapor Product Use, Public School grades 9-12



FY 21 – Concern  
FY 22 – Concern  
FY 23 – Concern

**2018 is most recent data**

Middle School Students reporting Electronic Vapor Product Use, Public School Grades 6-8

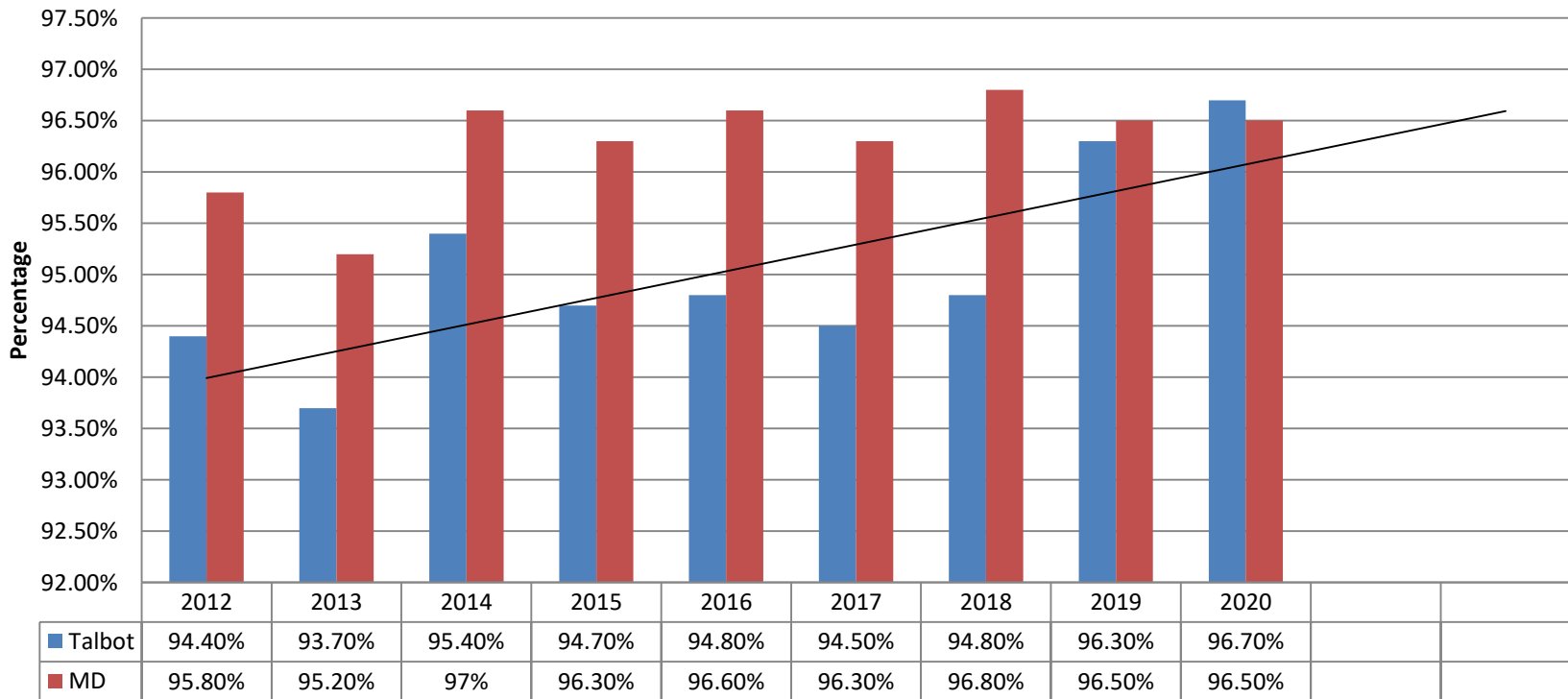


Data Source: YRBS, QN34 High School, QN21 Middle School

# Indicator: Health Insurance Coverage

FY 13 – Positive Progress  
 FY 16 – Positive Progress  
 FY 17 – Positive Progress  
 FY 18 – Positive Progress  
 FY 23 – Positive Progress  
 but Concern about access  
 for all (need disaggregated  
 data)

## Health Insurance Children, ages 0 to 18



Data Source: US Census, SAIPE, and ACS – Most recent





# Indicator: Immunizations

FY 13 – Positive Progress

FY 16 –Positive Progress

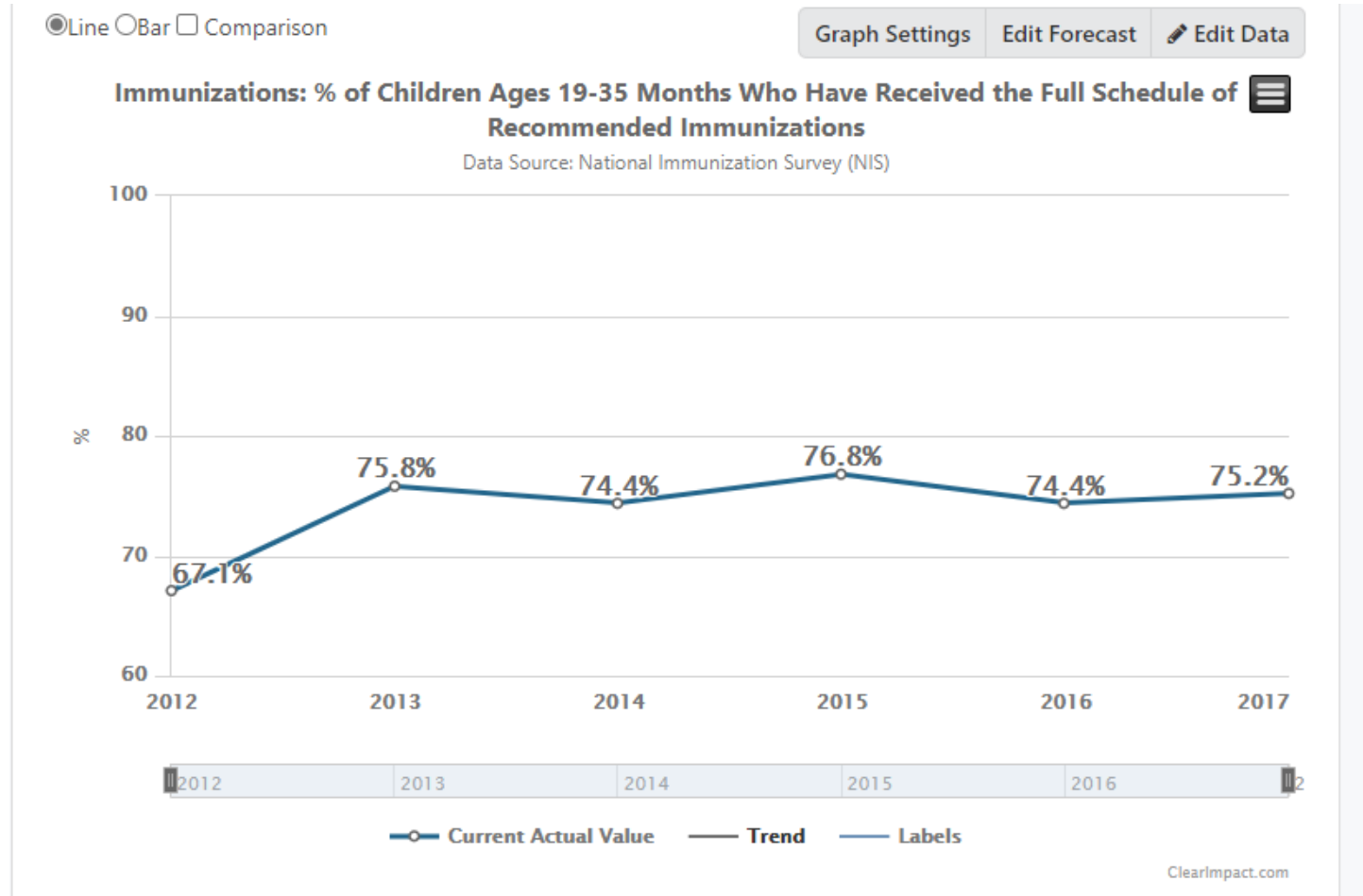
FY 17- Positive Progress

FY 18 – Monitor

GOC is working on data development.

Data not available on county level.

FY 23 – Monitor



I Immunization

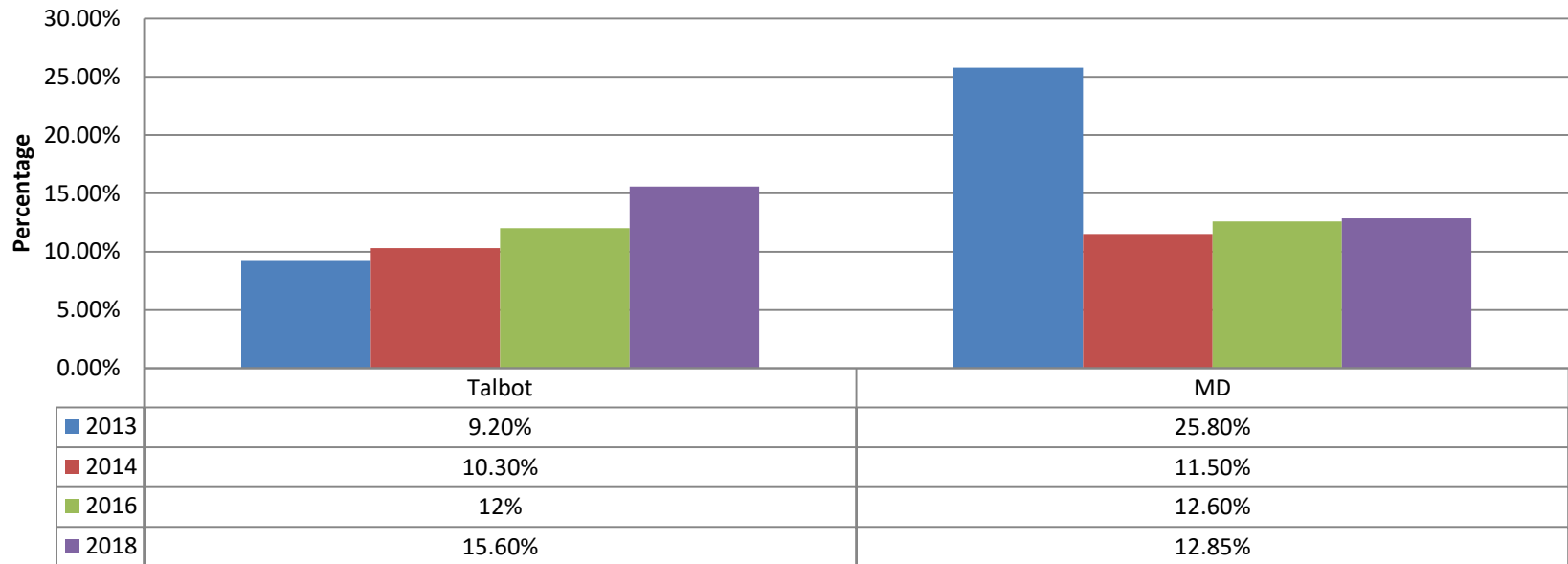


Source: GOC

# Indicator: Obesity

FY 13 – Concern  
FY 16 – Monitor  
FY 17 – Monitor  
FY 18 – Monitor  
FY 23 – Monitor

## Childhood Obesity 9-12 graders



**2018 is most recent data**

### Actual Numbers

2013 N= 745

2014 N= 692

2016 N=986

2018 N=910

9.2%= 69 Students

10.3%=90 Students

12%=118 Students

15.6%=142 Students

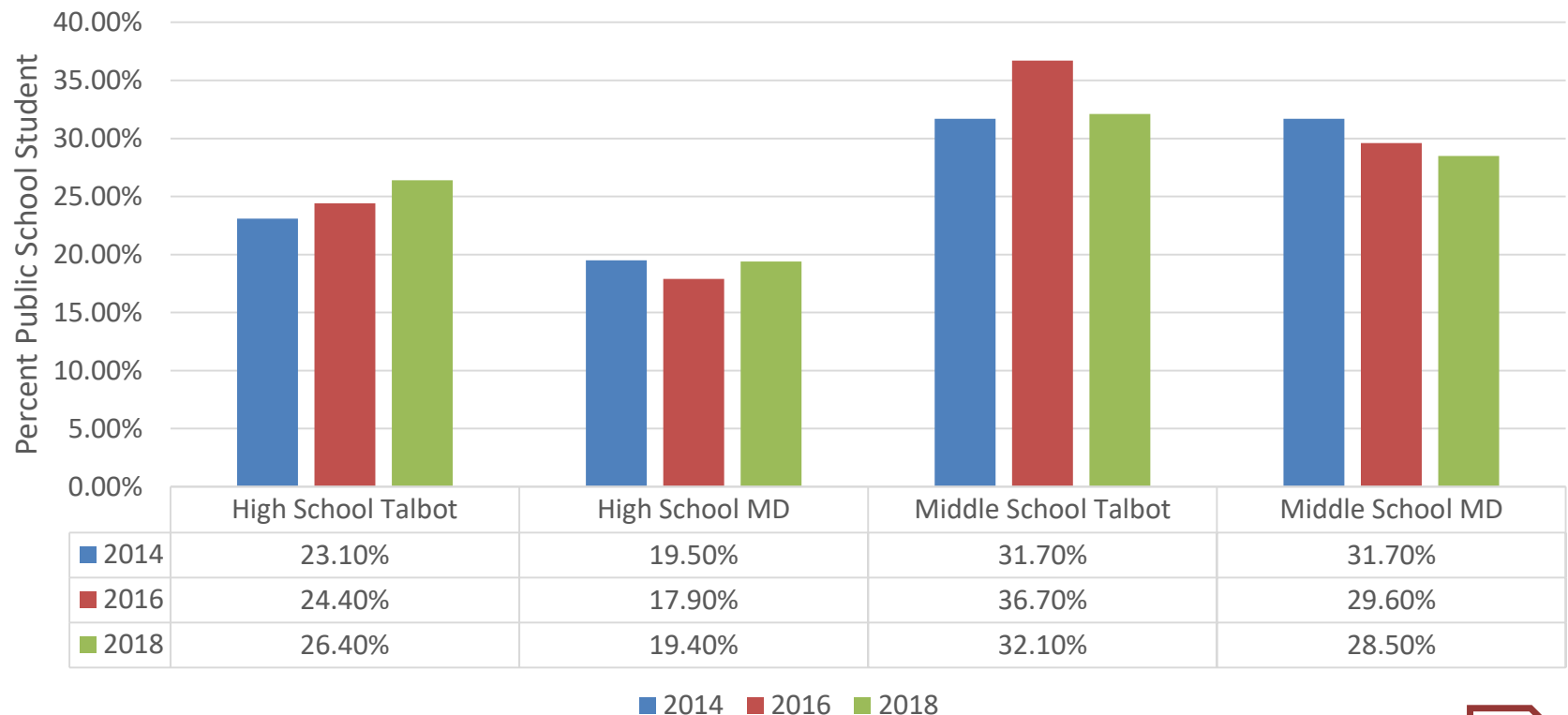


Data Source: YRBS, QNOBESE

Calculated from Self Report of Height and Weight

# Physical Activity

Physical Activity 60 Minutes in Last 7 days  
Percent of Public School Students self report



Source: YRBS – QNPA7DAY

**2018 is most recent data**



# RESULTS FOR CHILD WELL BEING

Youth Will Complete School

# Indicator: High School Dropout Rate

FY 16 – Positive Progress

FY 17 – Concern

FY 18 – Concern

FY 19 – Monitor

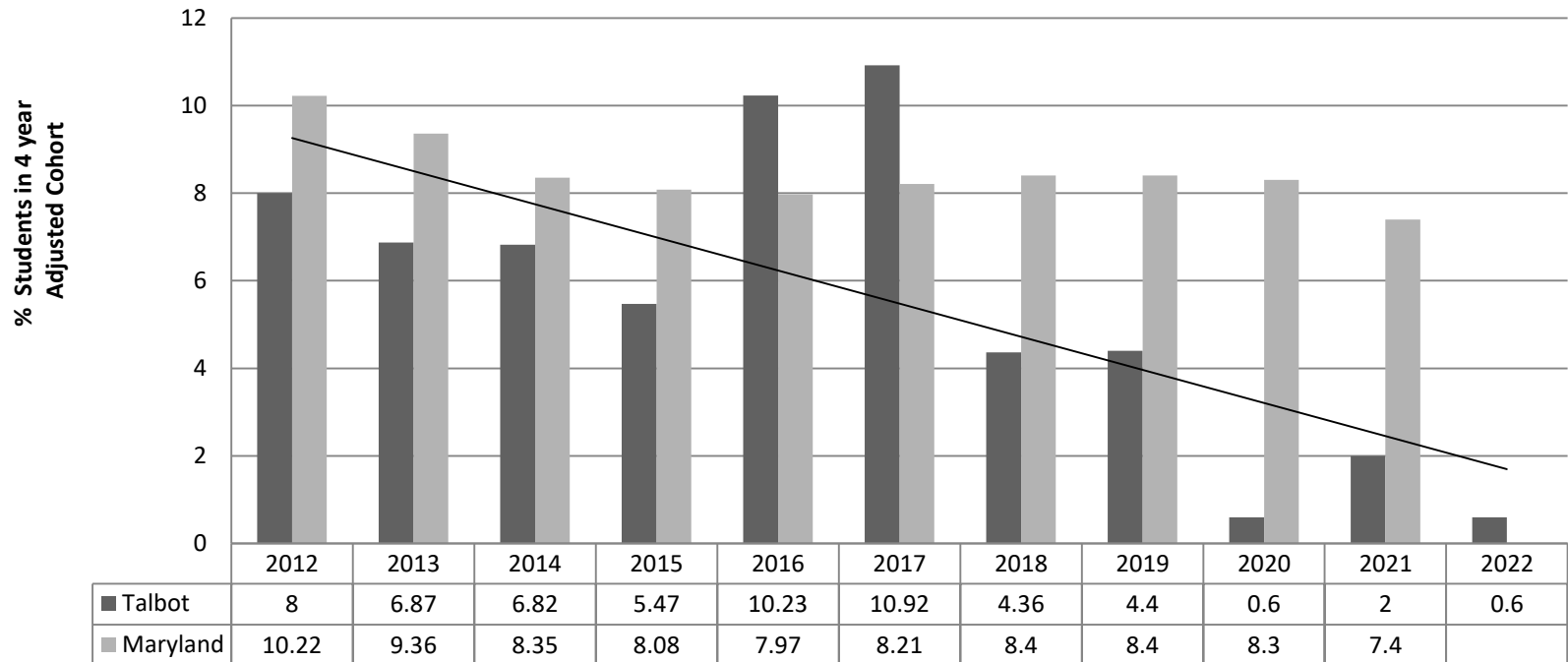
FY 20 – Monitor

FY 21 – Monitor

FY 22 – Monitor

FY 23 - Monitor

High School Drop Out Rate



Source: TCPS, 9/22 – MD 2022 data not released yet

# High School Drop Out Data

Graduation Year	# of Dropouts	# Students in Class/Cohort	Dropout Rate
2013	25	364	6.87%
3014	24	352	6.82%
2015	17	311	5.47%
2016	36	352	10.23%
2017	39	357	10.92%
2018	16	344	4.65%
2019	1	382	.3%
2020	2	356	.6%
2021	7	351	2.0%
<b>2022</b>	<b>2</b>	<b>336</b>	<b>.6%</b>

Source: MSDE and Unofficial data provided by TCPS, 9/22

# High School Dropout Rate

## Talbot Dropout Data by Subgroup

Subgroup	2017	2018	2019	2020	2021	2022
<b>Hispanic/ Latino</b>	35.1% (20)	10.9% (5)	20.7% (12)	1.4%(1)	7.4% (5)	<b>3.2% (2)</b>
<b>White</b>			1% (2)	0% (0)	0% (0)	<b>0% (0)</b>
<b>Two or +</b>			0%	6.7% (1)	6.7% (1)	<b>0% (0)</b>
<b>Black</b>			1.8% (1)	1.5% (1)	2.1% (1)	<b>0% (0)</b>
<b>Limited English Proficient</b>	63.3% (19)	45.5% (5)	35.3% (12)	3.8% (1)	18.5% (5)	<b>6.6% (2)</b>
<b>FARMS</b>	19.4% (25)	8.9% (10)	9.2% (12)	1.1% (3)	3% (4)	<b>.7% (1)</b>

Source: MSDE. 2022 Unofficial data provided by TCPS, 9/22

# 4-Year Cohort Graduation Rates

	2022	2021	2020	2019	2018	2017
<b>Talbot County</b>	<b>97.3%</b>	96.3%	95.5%	93.9%	93.9%	87.11%
<b>Black</b>	<b>95.4%</b>	93.6%	95.5%	94.7%	84.91%	87.23%
<b>Hispanic/ Latino</b>	<b>97.3%</b>	91.2%	86%	75.9%	84.78%	61.40%
<b>White</b>	<b>99%</b>	98.6%	97.5%	97.6%	>95%	92.95%
<b>FARMS</b>	<b>94.3%</b>	94.7%	92.1%	87%	88.39%	77.52%



Source: Talbot County Public Schools, Unofficial 2022, 9/22



# MSDE Report Card on Graduation

Graduation rate (H)	ADJUSTED COHORT GRADUATION RATE					
	FOUR-YEAR			FIVE-YEAR		
	PERCENT	ANNUAL TARGET	IMPROVEMENT	PERCENT	ANNUAL TARGET	IMPROVEMENT
Black/African Amer.	84.91 %	✗	✗	86.79 %	✓	✗
Hispanic/Latino	84.78 %	✓	✓	84.78 %	✓	✓
White	97.84 %	✓	✓	98.7 %	✓	✓
Econ. Disadvantaged	89.47 %	✓	--	91.23 %	✓	--
<b>All Students</b>	<b>94.19 %</b>	✓	✓	<b>94.78 %</b>	✓	✓

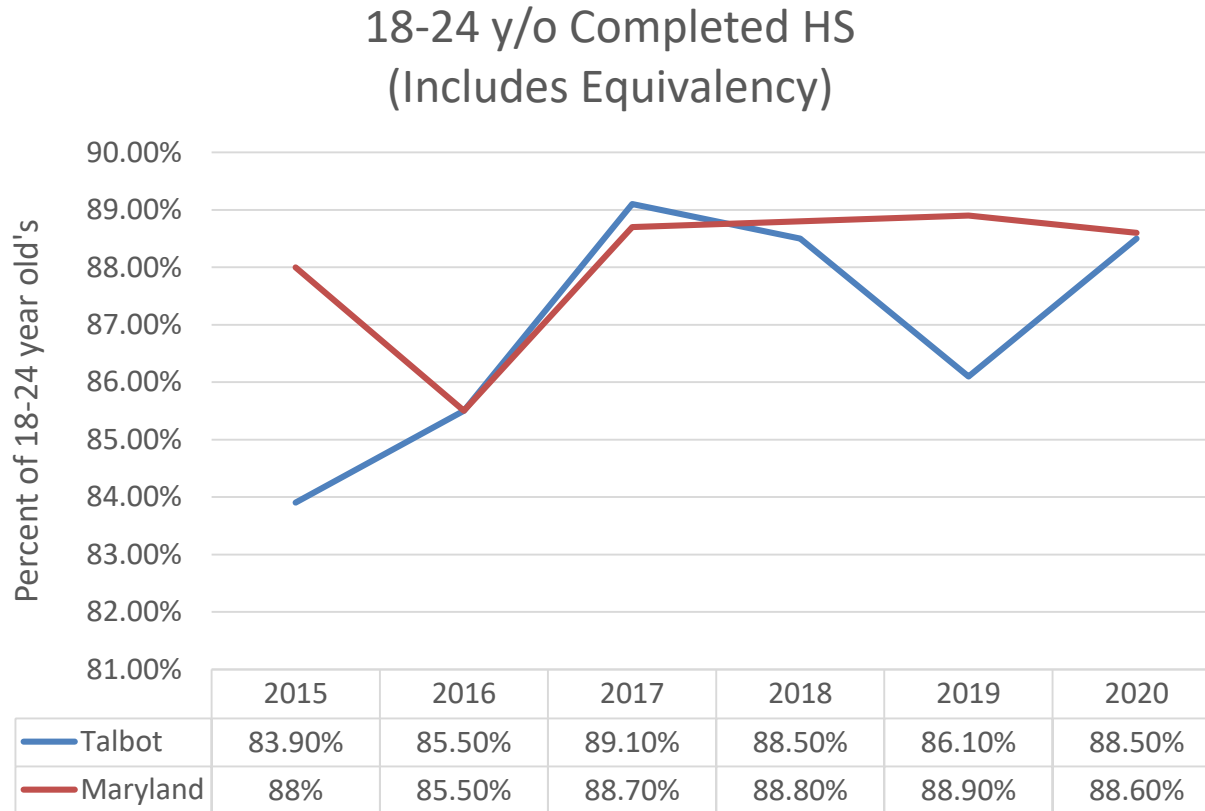
Footnote: Only Student Groups with 30 or more students are reported. Student Groups include the following: American Indian/Alaskan Native, Asian, Native hawaiian or Other Pacific Islander, Black/African American, Hispanic/Latino of any Race, White, Two or More Races, Students with Disabilities, and English Learners. Economically Disadvantaged is not available until Year 2 Accountability. ✓ =Met ✗ =Not Met



Source: MSDE Report Card, Most recent SY 2019 – Most recent

# Educational Attainment

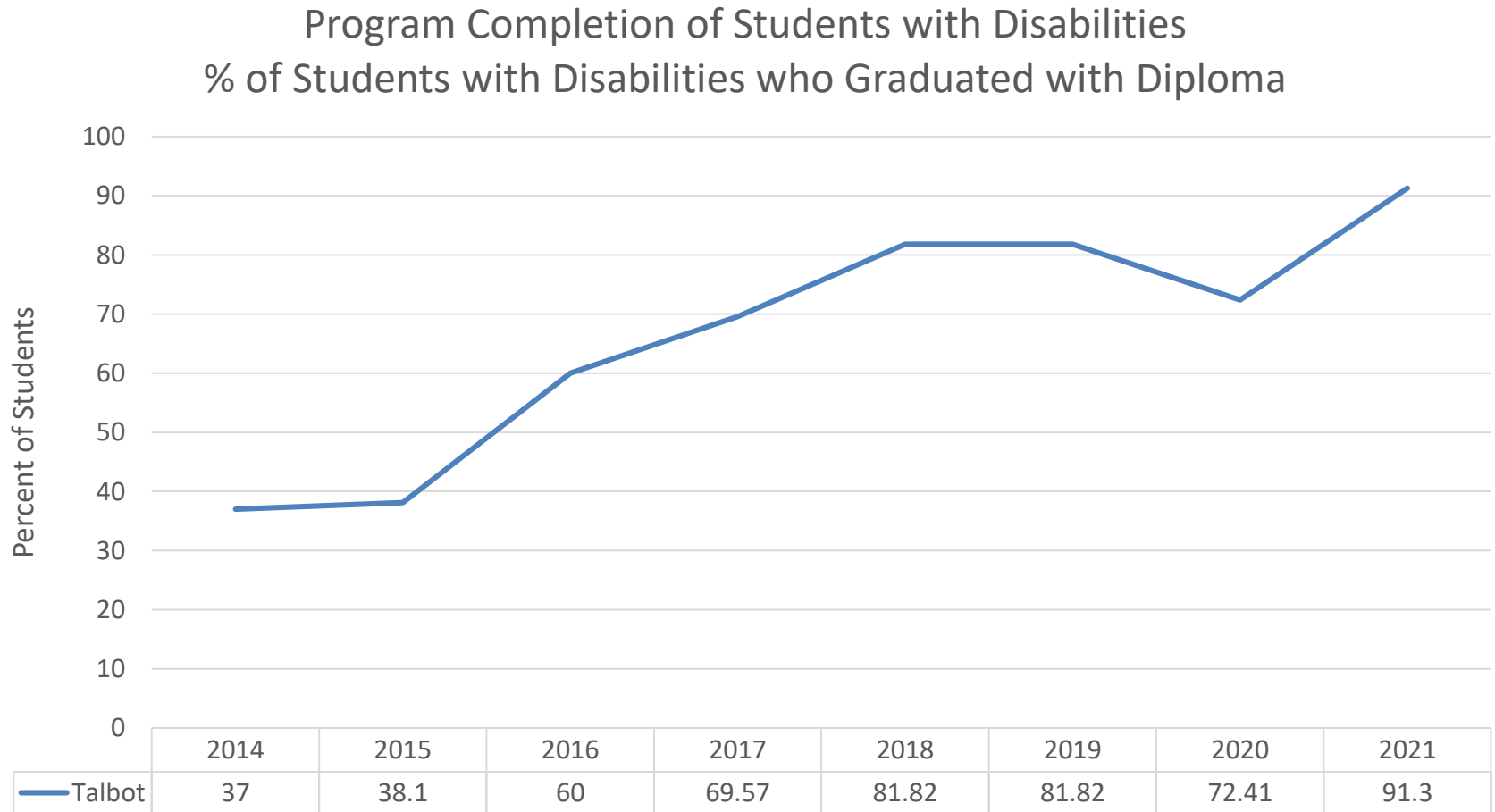
FY 23 – Monitor



Source: US Census, ACS, most recent 2020

# Indicator: HS Completion of Students with Disabilities

FY 13 – Positive Progress  
FY 16- Positive Progress  
FY 17- Positive Progress  
FY 18 - Positive Progress



Source: MSDE, most recent.



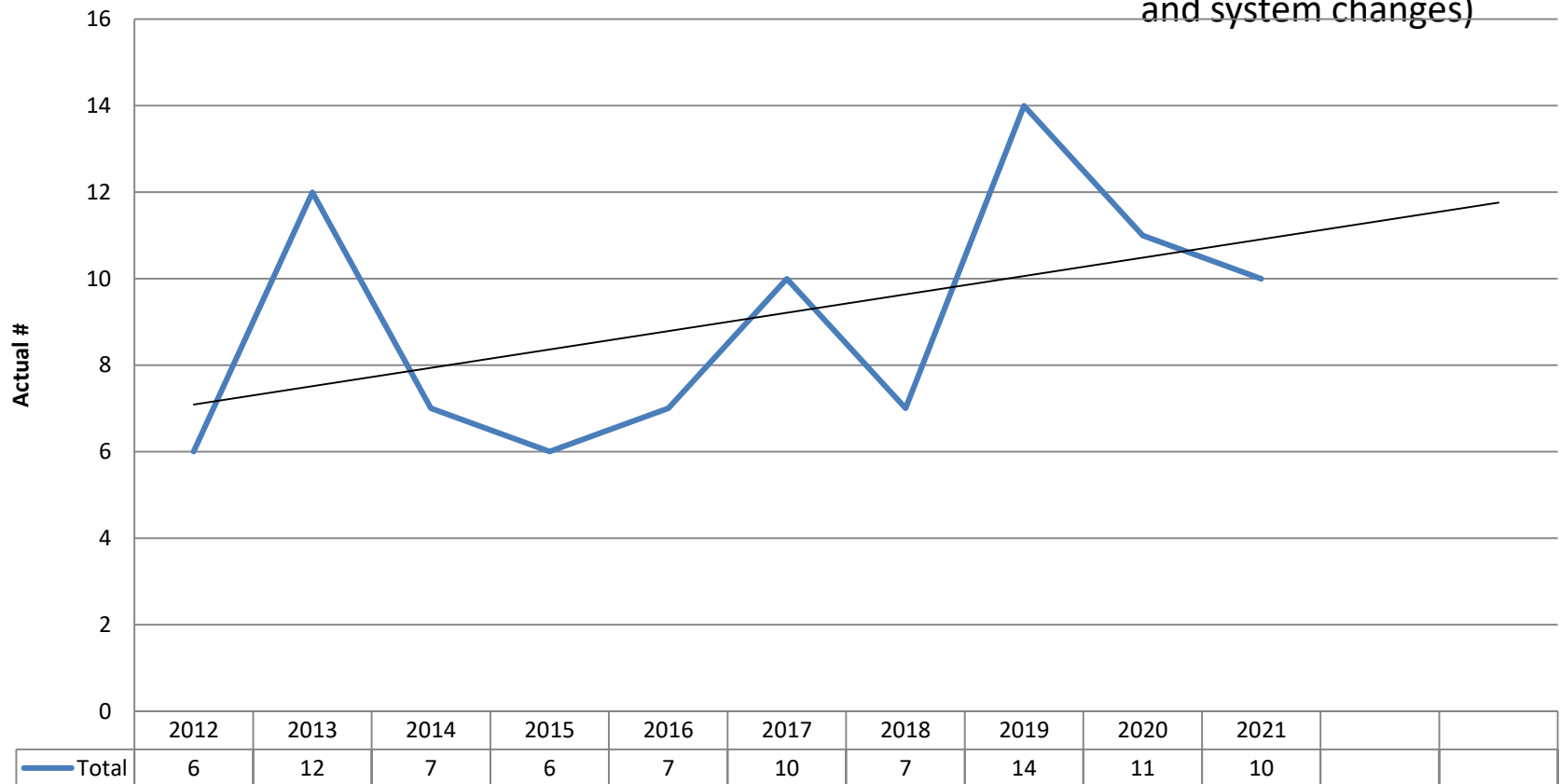
# RESULTS FOR CHILD WELL BEING

Youth Have Opportunities for  
Employment and Career Readiness

# Indicator: Juvenile Felony Offenses

FY 13 – Monitor  
 FY 16 – Positive Progress  
 FY 17 – Positive Progress  
 FY 18 – Positive Progress  
 FY 22 – Monitor (due to input from Wm Johnson / DJS on possible legislative changes.)  
 FY 23 – Monitor (due to data and system changes)

## Juvenile Violent Felony Complaints



Source: DJS Annual Statistical Report, 2021 is most recent data

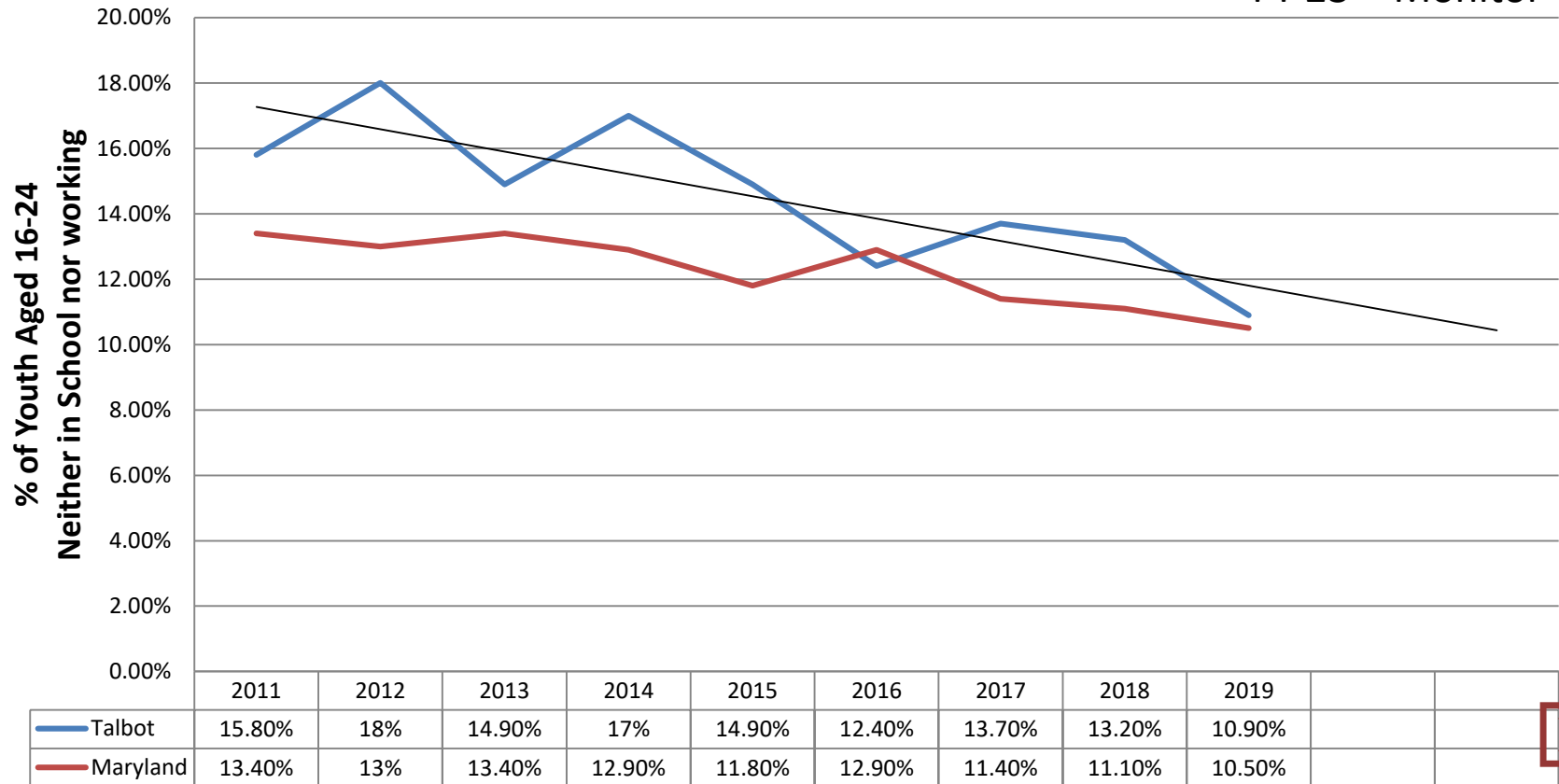


# Disconnect Youth

Age 16-24 Neither in school nor working

FY 17 – Concern  
 FY 18 – Concern  
 FY 19 – Concern  
 FY 20  
 FY 21 – Monitor  
 FY 22 – Monitor  
 FY 23 – Monitor

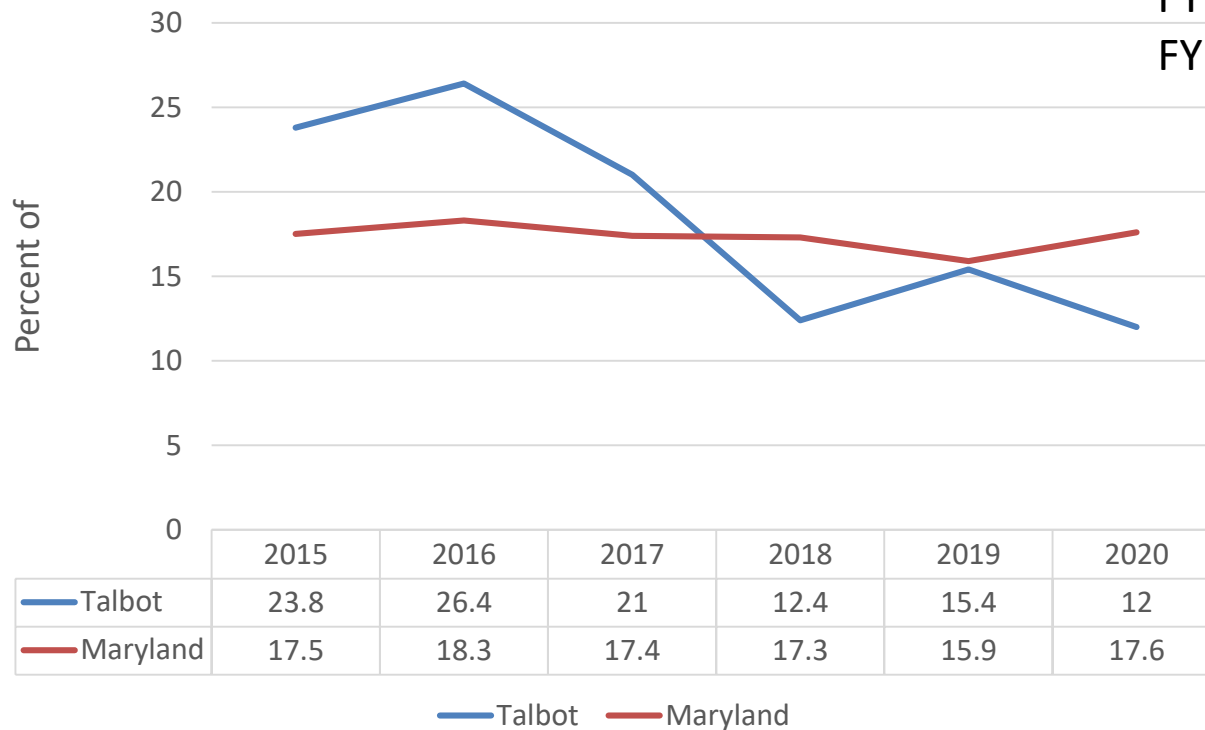
## Disconnected Youth



# Youth Employment

FY 17 – Monitor  
 FY 18 – Monitor  
 FY 19 – Monitor  
 FY 20 – Monitor  
 FY 21 – Monitor  
 FY 22 – Monitor  
 FY 23 – Monitor

Unemployed 16-19 Year Old's in Labor Force



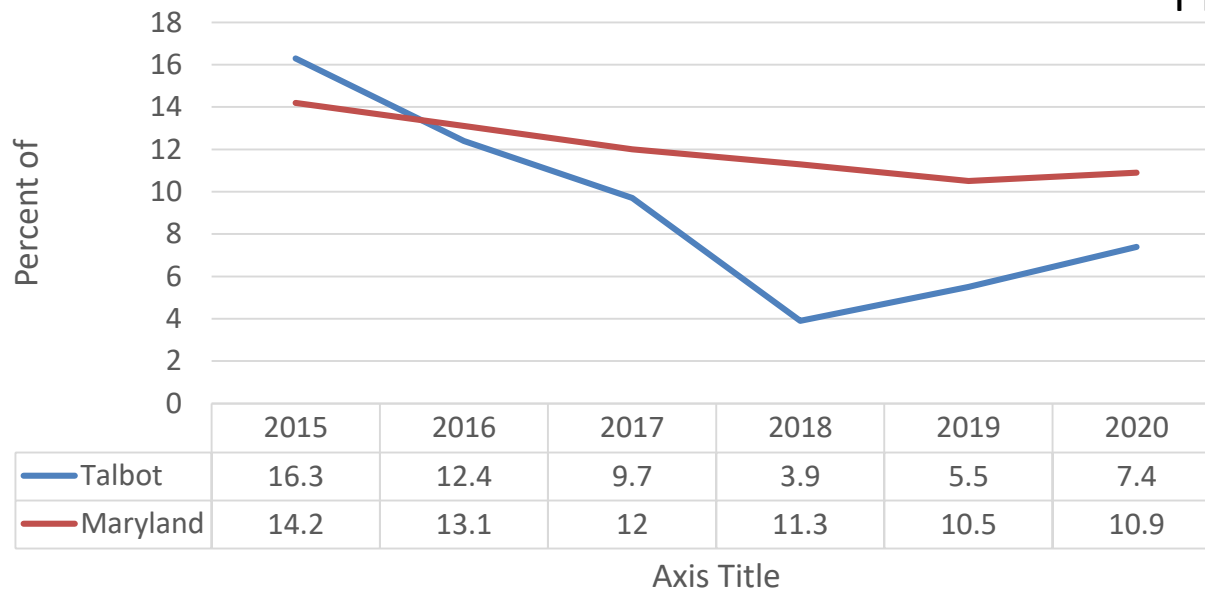
Actual #	2015	2016	2017	2018	2019	2020
Unemployed	373	416	325	180	258	195

Source: ACS, US Census, most recent 2020

# Youth Employment

Unemployed 20-24 Year Old's in Labor Force

FY 17 – Monitor  
FY 18 – Monitor  
FY 19 – Monitor  
FY 20 – Monitor  
FY 21 – Monitor  
FY 22 – Monitor  
FY 23 – Monitor



Actual #	2015	2016	2017	2018	2019	2020
Unemployed	295	222	165	62	84	109

Source: ACS, US Census, most recent 2020



# Indicator: High School Program Completion

FY16-17 – More Information

FY18 – More Info Needed

FY19 – Monitor

FY20 – Monitor

FY23 – Monitor

Completion Category:	2016	2017	2018	2019	2020	2021
a. Univ MD Course Requirements	30.1%	53.2%	83	86 (25.7%)	114 (30.2%)	98 (29%)
b. Career & Tech Ed Program Requirements	28.8%	23.6%	98	75 (22.5%)	79 (20.9%)	45 (13.3%)
c. Both Univ & Career / Tech Requirements	21.8%	19.4%	91	89 (26.6%)	69 (18.3%)	110 (32.5%)
d. Rigorous High School Program Indicator	31.1%	33.9%	105	114 (34.1%)	131 (34.7%)	108 (32%)
e. At least one of the above categories	80.8%	78.8%	1	-	-	-

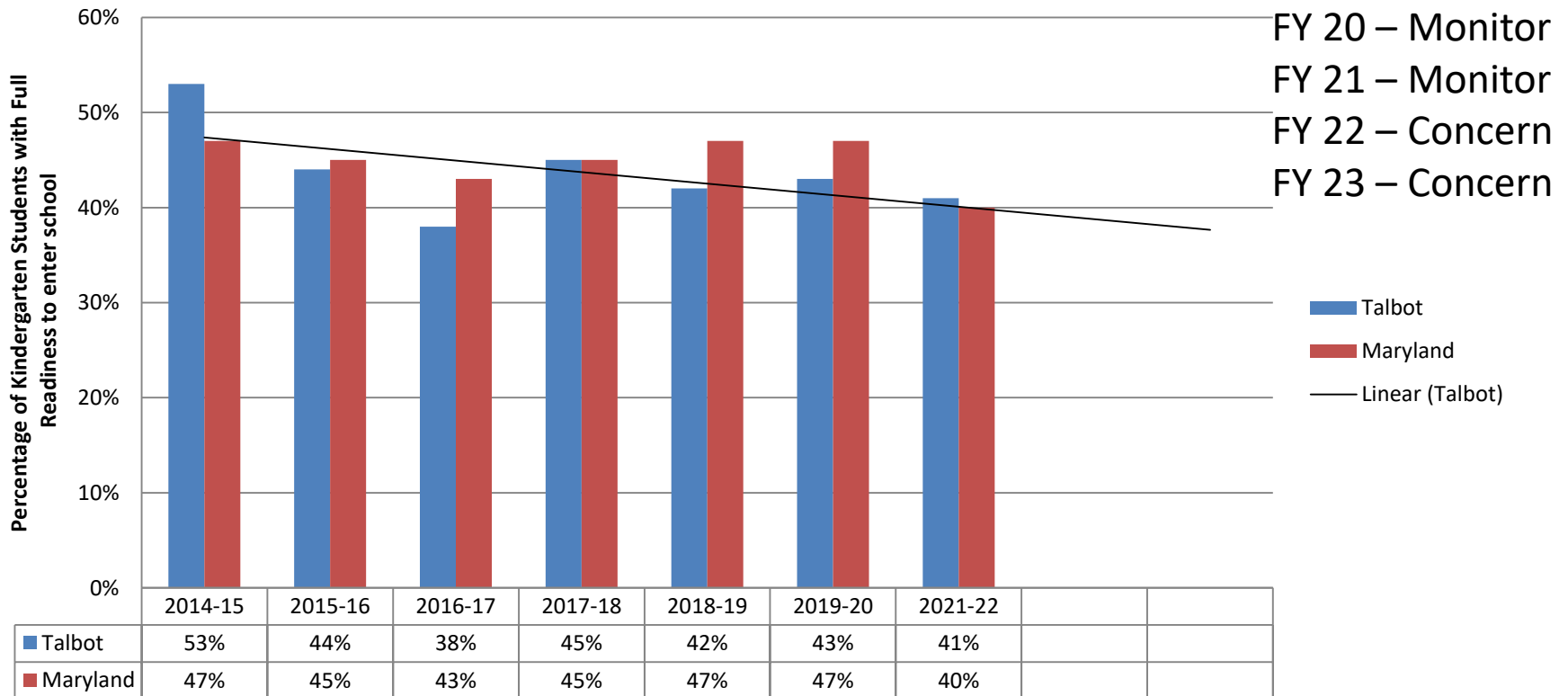


# RESULTS FOR CHILD WELL BEING

Children Enter School  
Ready to Learn

# Indicator: Kindergarten Assessment

## Kindergarten Readiness Assessment (KRA)



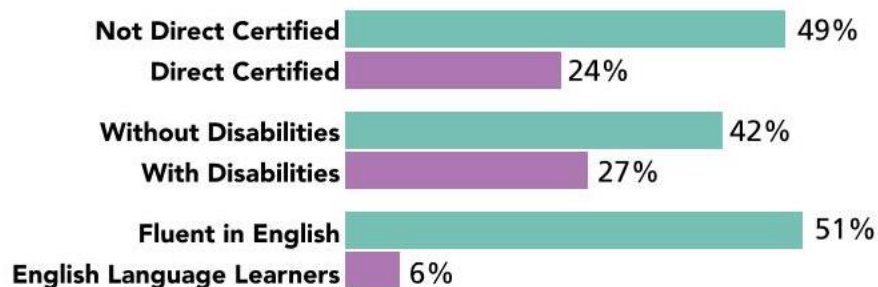
Source: 2021-22 Kindergarten Readiness Assessment Report

# KRA and Demographics

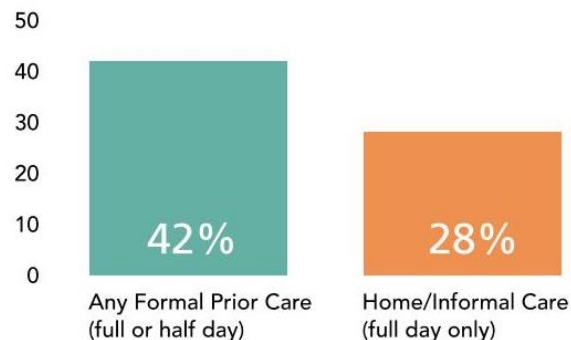
\* Too few students/not reported

TALBOT	Black	Asian	Hispanic	2 or More Races	White
SY 2018-19	40%	*	20%	40%	52%
SY 2019-20	37%	30%	23%	54%	58%
SY 2021-22	<b>23%</b>	*	<b>13%</b>	<b>20%</b>	<b>60%</b>
% of K population	11%	2%	27%	5%	55%

## Subgroup READINESS



## Parent-Reported Prior Care READINESS



FG



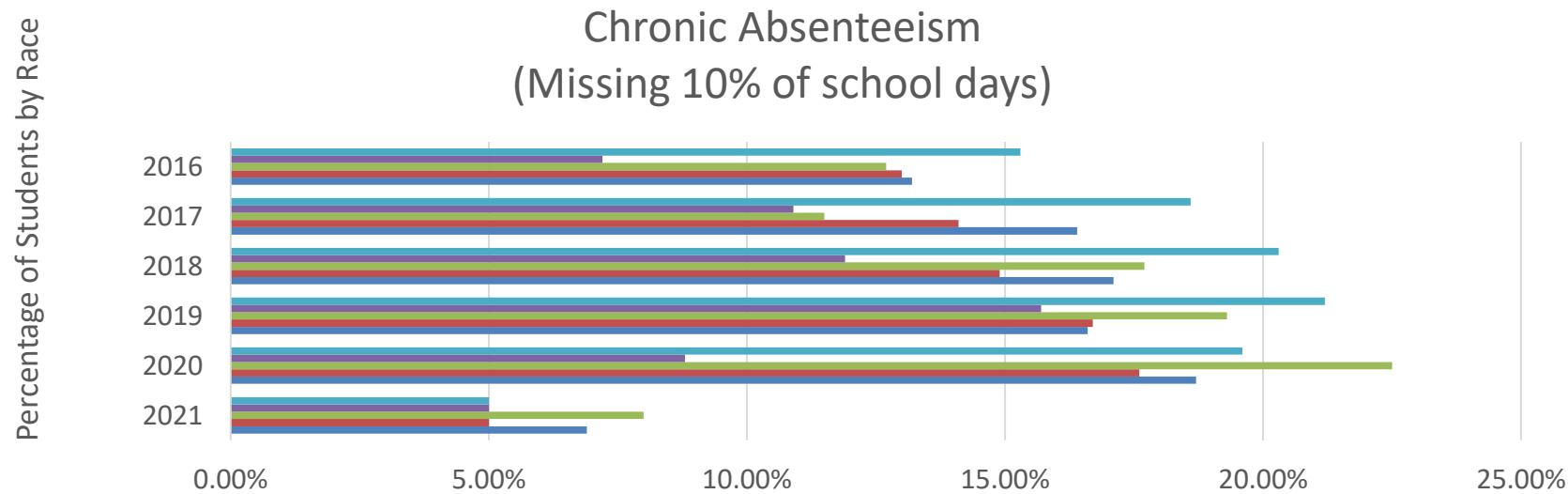
# RESULTS FOR CHILD WELL BEING

Children are Successful in School

New FY21

# School Attendance

FY 22 – Concern  
FY 23 – Monitor  
(need updated data)



	2021	2020	2019	2018	2017	2016
2 or more races	5%	19.60%	21.20%	20.30%	18.60%	15.30%
Asian	5%	8.80%	15.70%	11.90%	10.90%	7.20%
Hispanic	8%	22.50%	19.30%	17.70%	11.50%	12.70%
White	5%	17.60%	16.70%	14.90%	14.10%	13%
Black	6.90%	18.70%	16.60%	17.10%	16.40%	13.20%



2 or more races Asian Hispanic White Black

5% in 2021 indicates at or below 5%

Source: MSDE Report Card, most recent 2021

New FY21

# School Attendance

## 2021/22 Chronic Absenteeism

(Missing 10% or > of school days)

Student Population	% Chronically Absent
Black	At or less than 5% (607)
Hispanic / Latino	5.9% (51/866)
White	At or less than 5% (2,148)
Two or More Races	At or less than 5% (239)

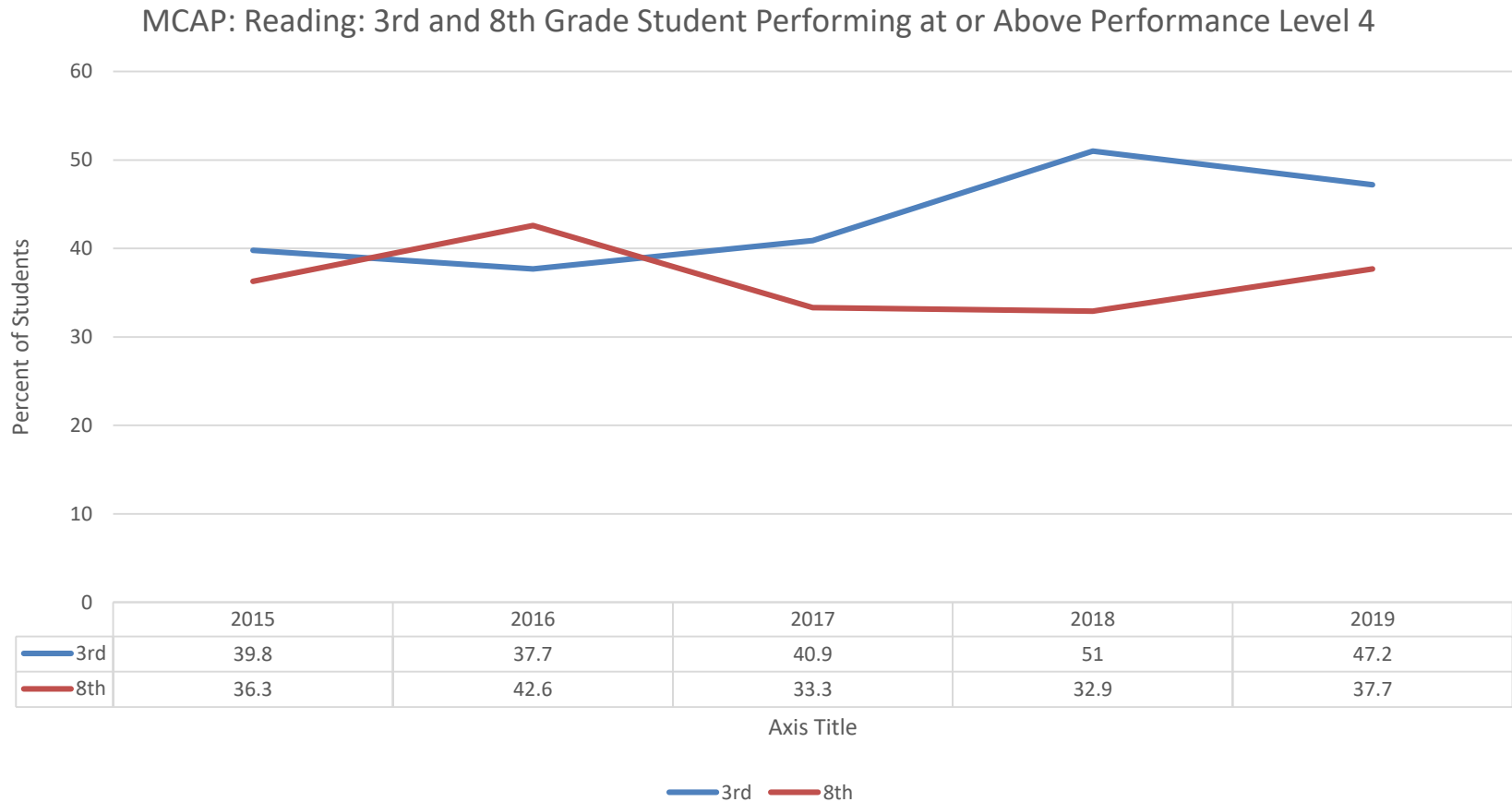
Source: MSDE Report Card



New FY21

# MD Comprehensive Assessment Program - Reading

FY 23 – Monitor  
(need updated data)



Source: MSDE Report Card, most recent 2019

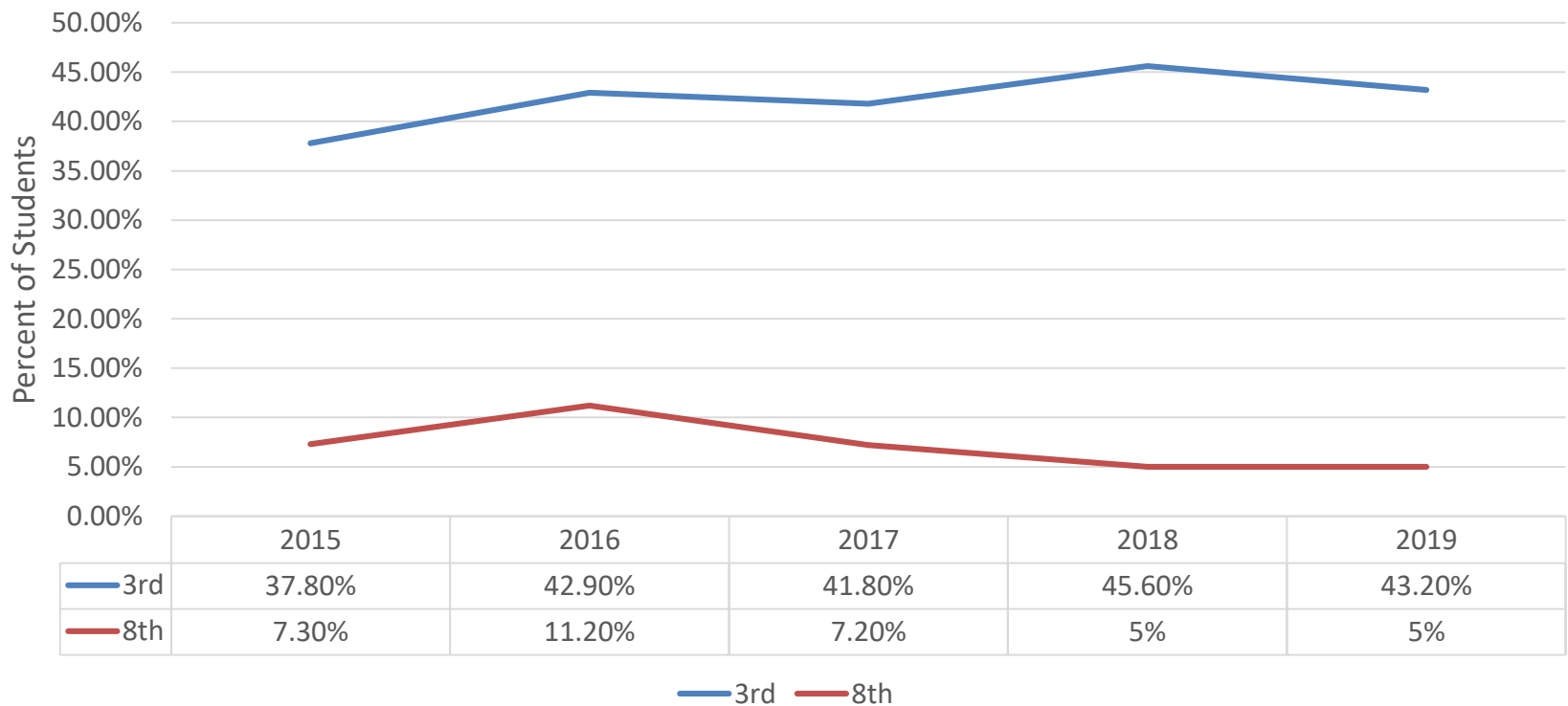




# MCAP - Math

FY 23 – Monitor  
(need updated data)

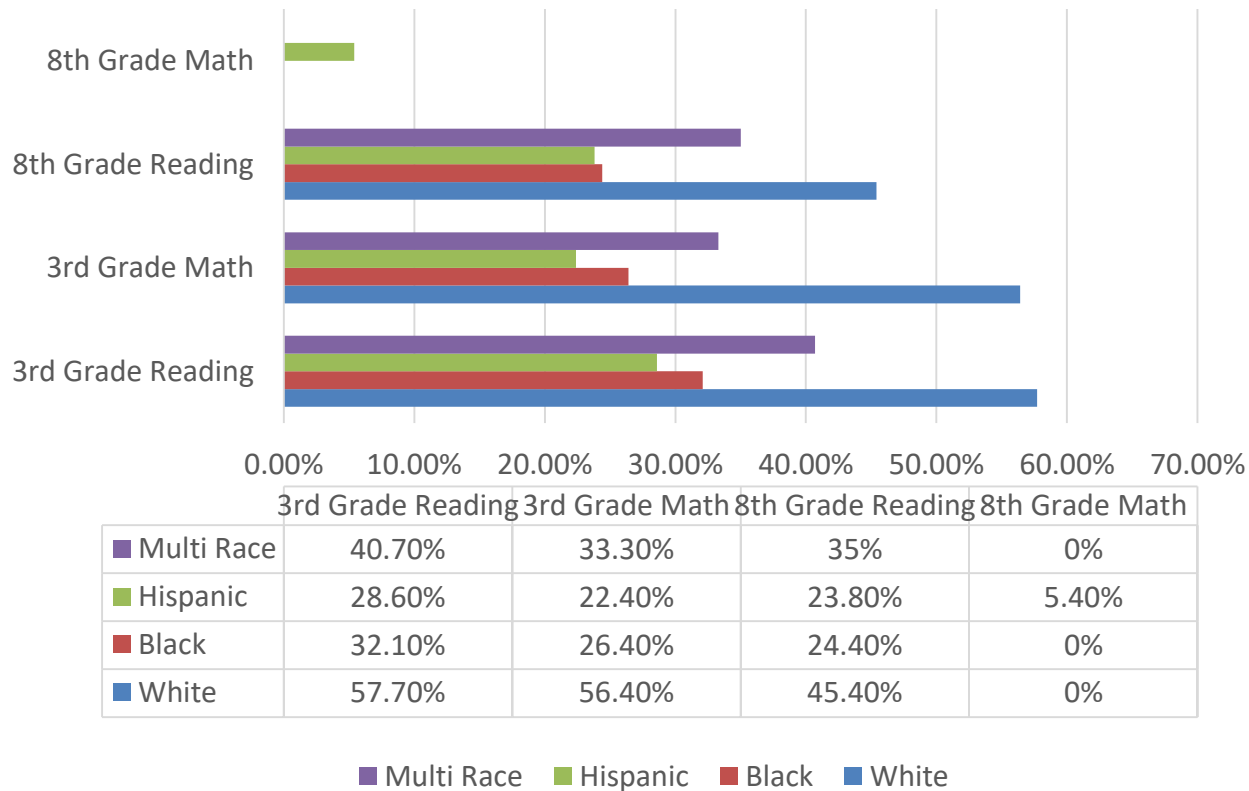
## MCAP: Math: 3<sup>rd</sup> and 8<sup>th</sup> Grade Students Performing at or Above Level 4



Source: MSDE Report Card, most recent 2019



# 2019 MCAP 3<sup>rd</sup> and 8<sup>th</sup> Grade By Race



NOTE – 0% in 8<sup>th</sup> Grade Math should be < 5%

Source: MSDE – Most recent



# MSAA: Math and English Percent of students (8<sup>th</sup> and 11<sup>th</sup>) Scoring at or Above Proficient on Multi-State Alternative Assessment

Talbot has too few students so data is not available via MSDE report card

# Academic Achievement

FY 20 - Concern (racial disparities)  
FY 21 – Concern (racial disparities)  
FY 22 – Concern (racial disparities)

ACHIEVEMENT (E/M/H)	PERCENT PROFICIENT					
	MATH			ENGLISH LANGUAGE ARTS		
	PERCENT	ANNUAL TARGET	IMPROVEMENT	PERCENT	ANNUAL TARGET	IMPROVEMENT
Asian	56.3% / 56.3% / na	✓	✓	62.5% / 68.8% / na	✓	✓
Black/African Amer.	21.7% / 7.4% / 19.2%	✗	✓	25.3% / 19.5% / 24%	✗	✓
Hispanic/Latino	22.5% / 8.3% / 18.2%	✗	✗	31.3% / 25% / 30.2%	✓	✓
White	56.8% / 30.6% / 53.3%	✓	✓	60.7% / 46.2% / 68.8%	✓	✓
Two or more races	39.1% / 20% / 70%	✓	✓	53.1% / 35.6% / na	✓	✓
Students w/Disabilities	13.5% / 4.2% / 14.3%	✗	✓	12.4% / 5.1% / 23.8%	✓	✓
English Learner	10.3% / 0% / 4.3%	✓	✓	9.6% / 2.1% / 8.7%	✓	✓
Econ. Disadvantaged	24.8% / 8.5% / 20.4%	✗	✗	31.9% / 20.8% / 34%	✗	✓
All Students	43% / 22.8% / 44%	✗	✓	48.6% / 38.1% / 56.7%	✓	✓

Footnote: Only Student Groups with 10 or more students are reported. Student Groups include the following: American Indian/Alaskan Native, Asian, Native Hawaiian or Other Pacific Islander, Black/African American, Hispanic/Latino of any Race, White, Two or More Races, Economically Disadvantaged, Students with Disabilities, and English Learners. ✓ =Met ✗ =Not Met

MSDE report card. Most recent SY 18-19. Most recent.





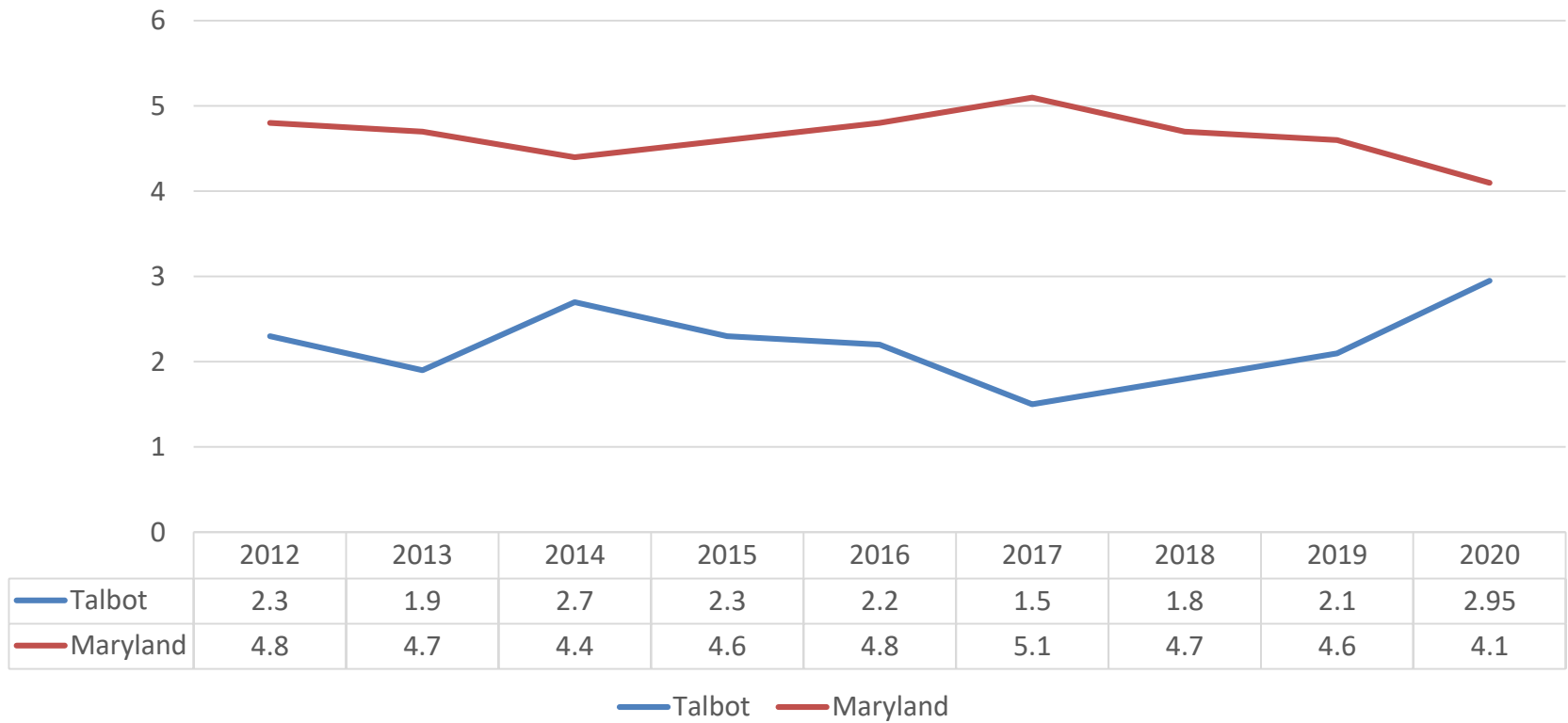
# RESULTS FOR CHILD WELL BEING

Communities are Safe for  
Children, Youth, and Families

FY 13 – Monitor  
FY 16-17 –Positive Progress  
FY 18 – Monitor  
FY 23 - Monitor

# Indicator: Crime

Violent Crimes  
Rate per 1,000 persons

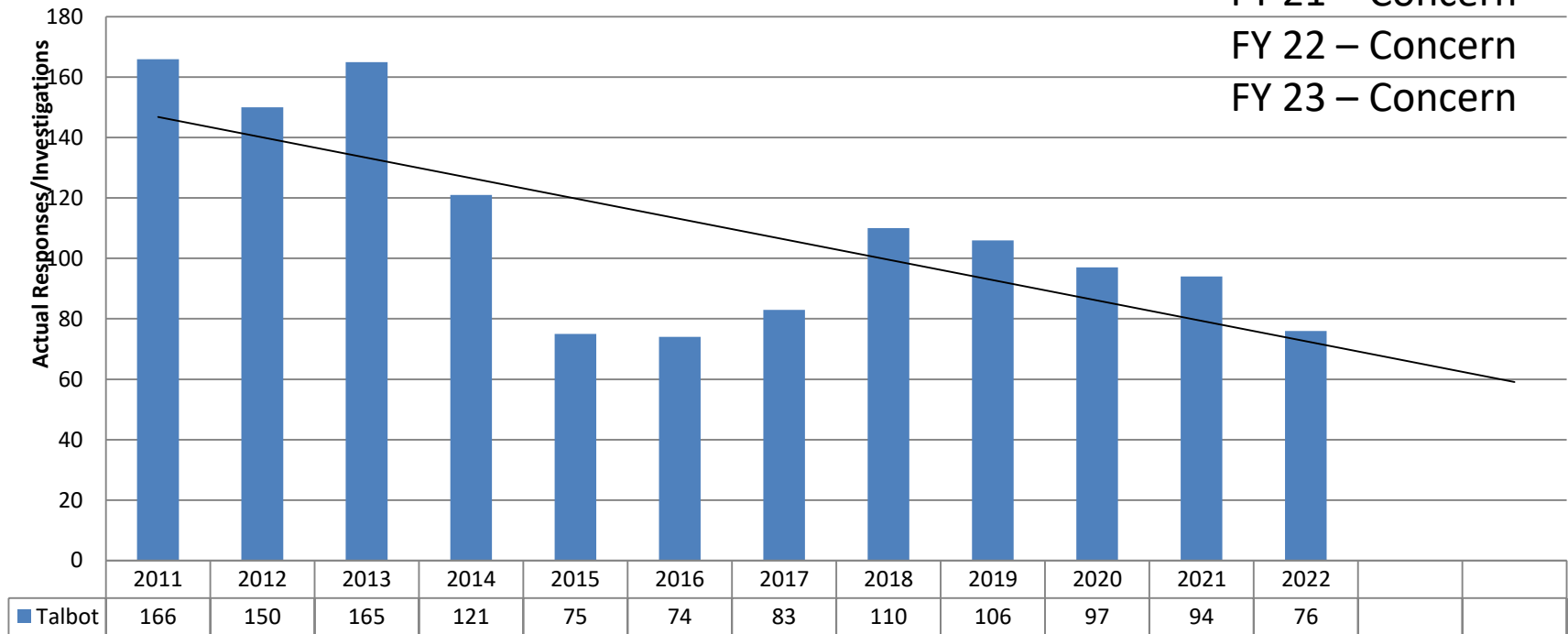


Source: Governor's Office for Crime Control and Prevention. Most recent 2020.

# Indicator: Maltreatment

## Talbot Child Protective Services Responses

FY 13 – Monitor  
FY 16 – no data  
FY 17 – Monitor  
FY 18 – Monitor  
FY 19 – Concern  
FY 20 – Concern  
FY 21 – Concern  
FY 22 – Concern  
FY 23 – Concern



**FY22 NOTE:** Discussion about the distinction between investigative cases and alternate response. See next slide.

Source: Talbot County Department of Social Services, racial demographics unavailable – In data development

# Maltreatment continued

	FY15	FY16	FY17	FY18	FY19	FY20	FY21	FY22
Screened In: <b>Alternative Response</b>	39 (52%)	39 (53%)	38 (46%)	65 (59%)	57 (54%)	52 (54%)	<b>29 (31%)</b>	<b>34 (45%)</b>
Screened In: <b>Investigative Response</b>	36 (48%)	35 (46%)	45 (54%)	45 (41%)	49 (46%)	45 (46%)	<b>65 (69%)</b>	<b>42 (55%)</b>
<b>TOTAL RESPONSES</b>	75	74	83	110	106	97	<b>94</b>	<b>76</b>

**Alternative Response:** approach for managing low risk reports of child neglect & abuse that allows local DSS to help MD families access services and supports that will resolve their concerns. AR involves working collaboratively with families to identify concerns, locate and apply solutions that can help keep families together and provide them with the services and supports they need to keep their children safe.

**Investigative Response:** investigation to determine if abuse or neglect has occurred and to ensure child safety and well-being.

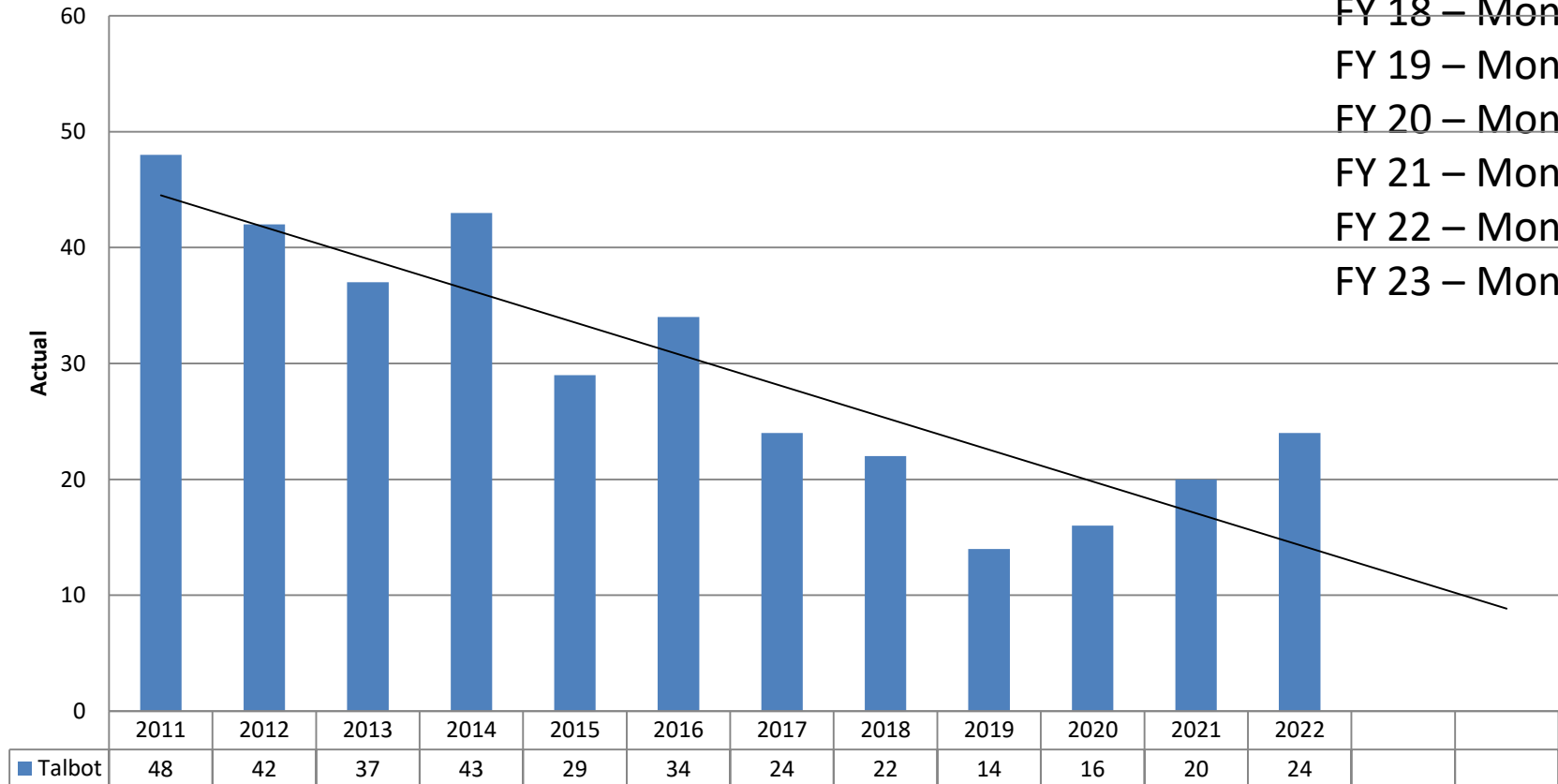
Source: Talbot County Department of Social Services



# Indicator: Out-of-Home Placement

FY 13 – Monitor  
 FY 16 – Monitor  
 FY 17 – Monitor  
 FY 18 – Monitor  
 FY 19 – Monitor  
 FY 20 – Monitor  
 FY 21 – Monitor  
 FY 22 – Monitor  
 FY 23 – Monitor

**Talbot Out of Home Placement**



**2019** – By Race – White-8, Black -3, Multi-Race – 3

**2020** – By Race – White-8, Black-8

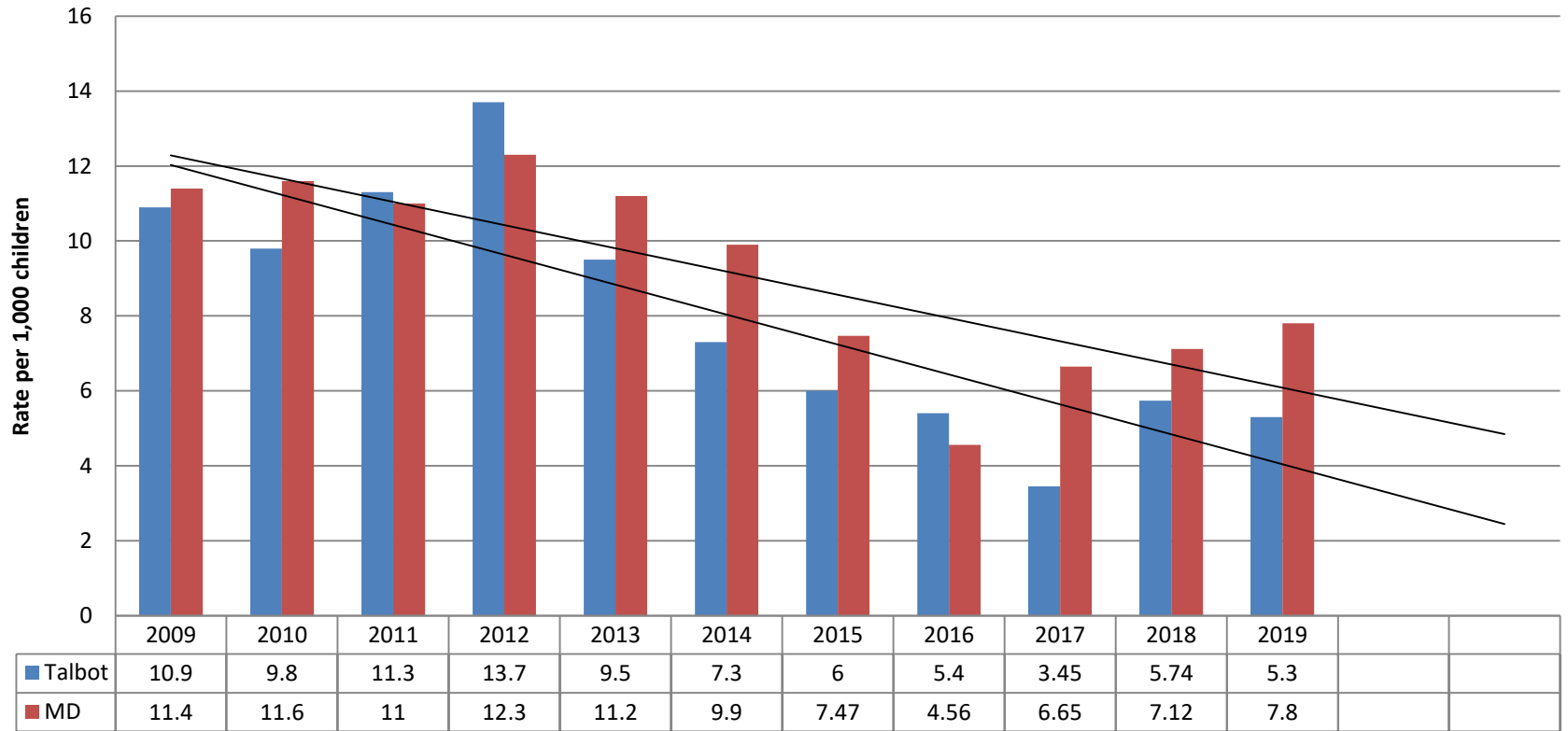
**2021** – By Race - White 10, Black 10

**2022** – By Race – White 10, Black 5, Multi-Race 8, Asian 1

**FY22 NOTE:** During pandemic, youth +18 could stay in foster care.

Source: Talbot County Department of Social Services

## Out of Home Placements Rate per 1,000 children



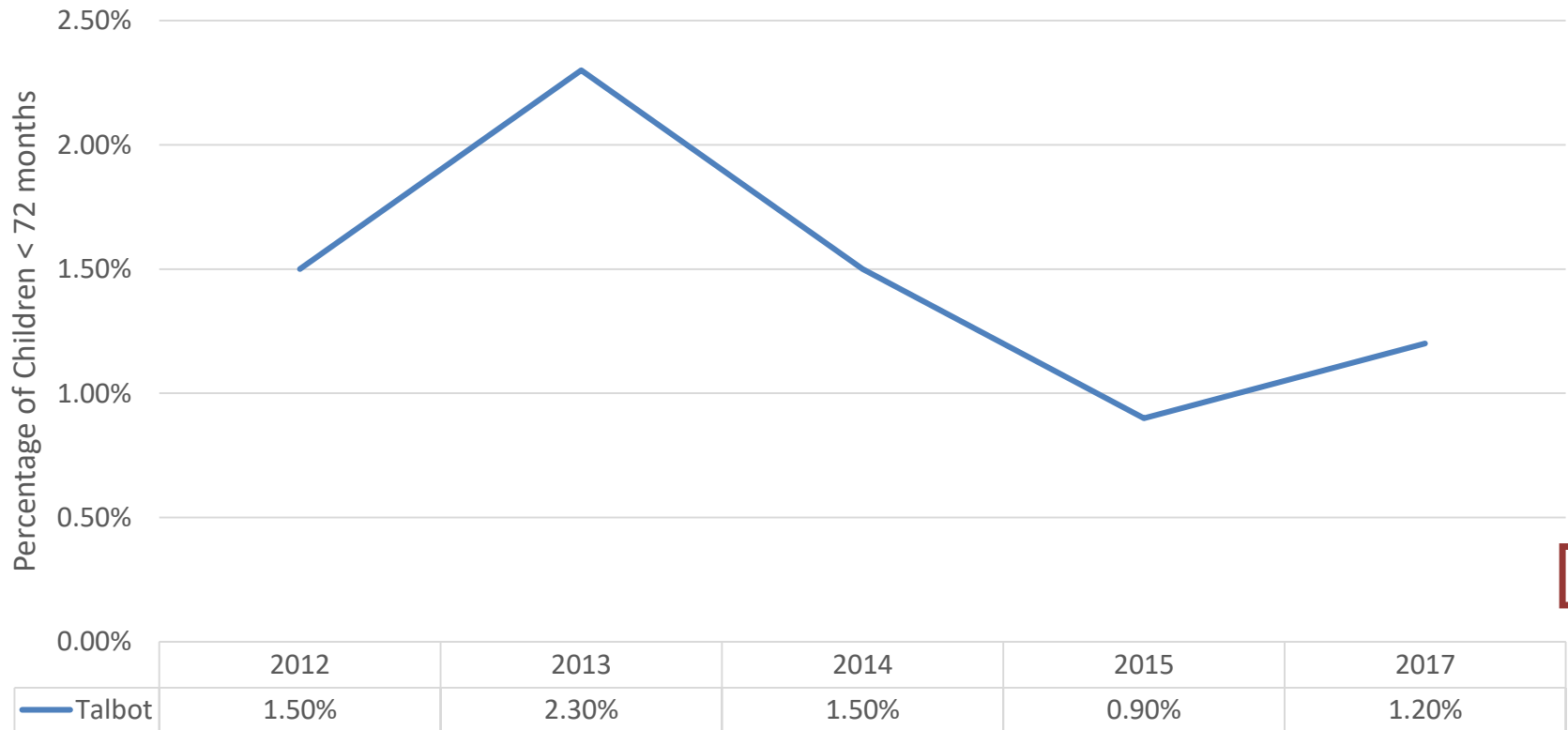
Source: DHR FY19 Out of Home Placement and Family Preservation Plan, most recent.



New FY21

# Lead Exposure

Children <72 months with confirmed Lead Exposure  
(Blood Lead Levels 5 micrograms/dl)



Source: [cdc.gov/nceh/lead/data/state/mddata.htm](https://cdc.gov/nceh/lead/data/state/mddata.htm) - Most recent is 2017



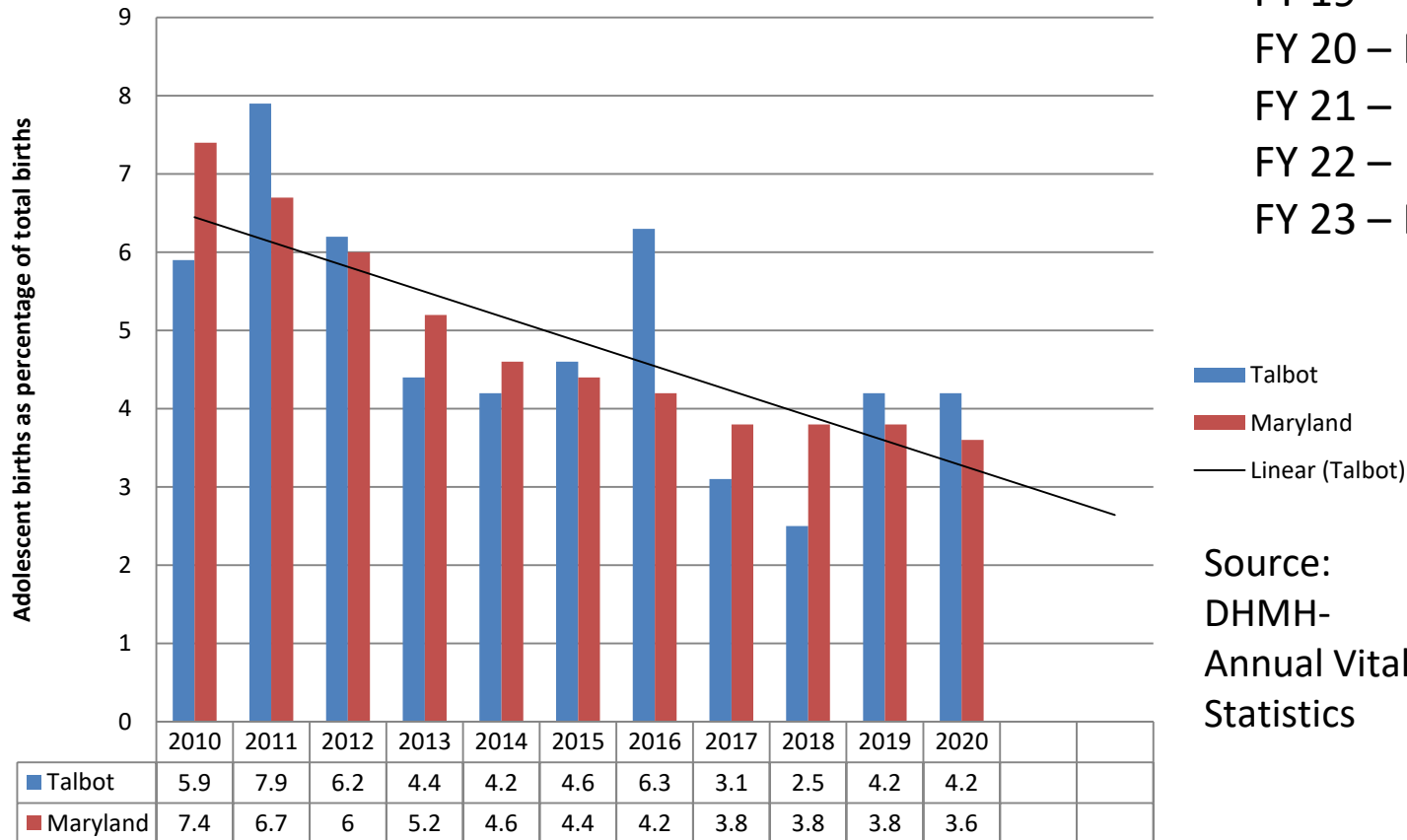
# RESULTS FOR CHILD WELL BEING

Babies Born Healthy

# Indicator: Births to Adolescents

FY 13 – Monitor  
 FY 16 – Positive Progress  
 FY 18 - Monitor  
 FY 19 - Monitor  
 FY 20 – Monitor  
 FY 21 –  
 FY 22 –  
 FY 23 – Monitor

**Births to Adolescents (Ages 10-19)**



Source:  
 DHMH-  
 Annual Vital  
 Statistics

Source: MD Department of Health Annual Vital Statistics 2020, most recent

Talbot Births to Adolescents				
Actual Numbers				
Year	<age 15	Age 15-17	Age 18-19	Total
<b>FY 13</b>	0	6	9	15
<b>FY 14</b>	0	2	12	14
<b>FY 15</b>	1	6	8	15
<b>FY 16</b>	0	7	14	21
<b>FY 17</b>	1	2	8	11
<b>FY 18</b>	0	2	6	8
<b>FY 19</b>	0	4	10	14
<b>FY 20</b>	1	7	8	16

FY 17 – Births by race of mother – 54.5% White, 36.4% Black, 36.4% Hispanic

FY 18 – Births by race of mother – 87.5% White, 12.5% Black, 62.5% Hispanic

FY 19 – Births by race of mother – 78.6% White, 21.4% Black, 21.4% Hispanic

FY20 – Births by race of mother – 68.8% White, 36.4% Black, 43.8% Hispanic

Source: MD Department of Health Annual Vital Statistics 2020, most recent

# Indicator: Low Birth Weight

## Low Birth Weight

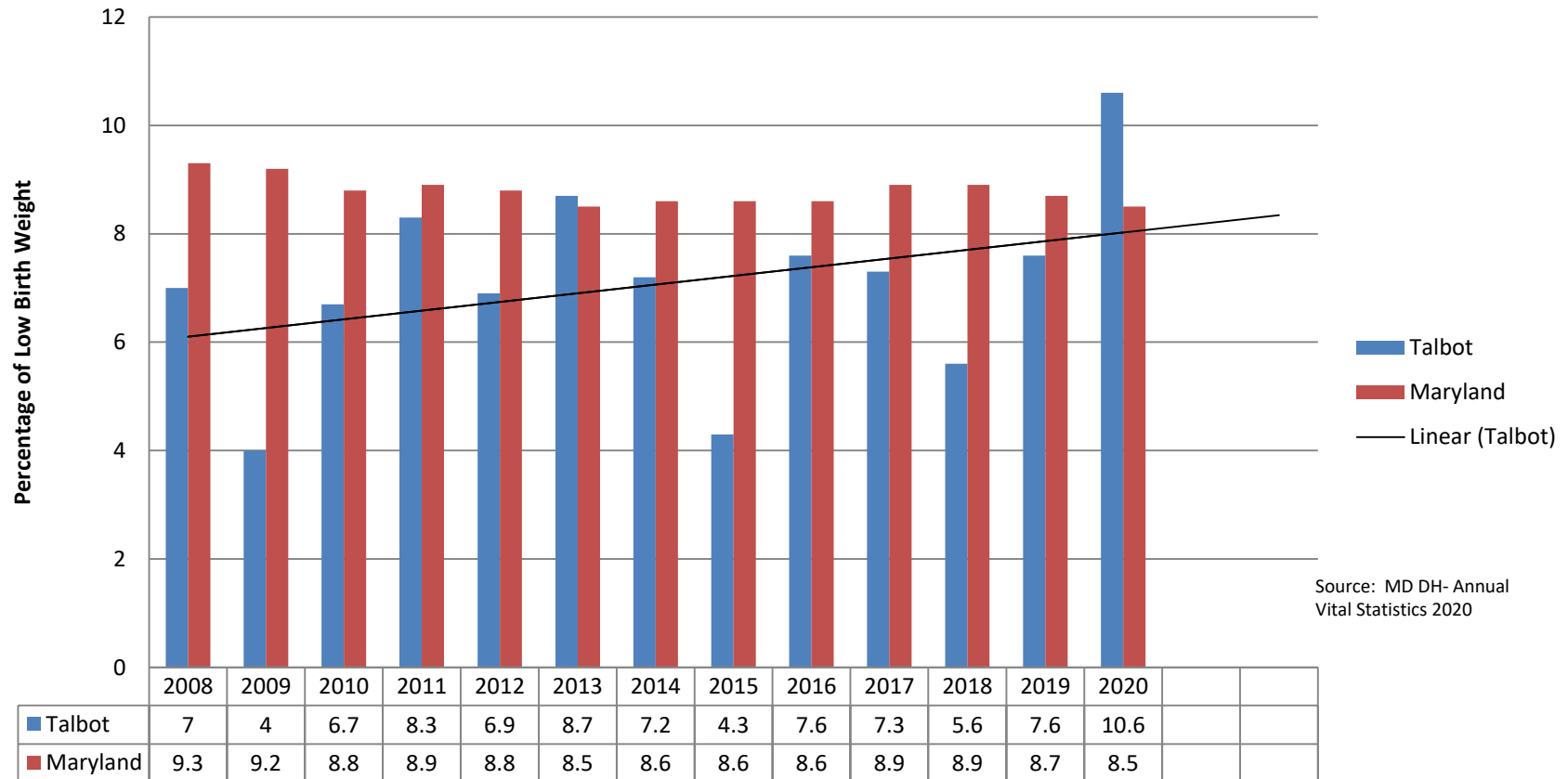
FY 13 – Positive Progress

FY 16 –Positive Progress

FY 17- Positive Progress

FY 18 – Monitor

FY23 - Concern



## Actual Numbers

FY 13 = 30

FY 14 =24

FY 15 = 14

FY 16=25

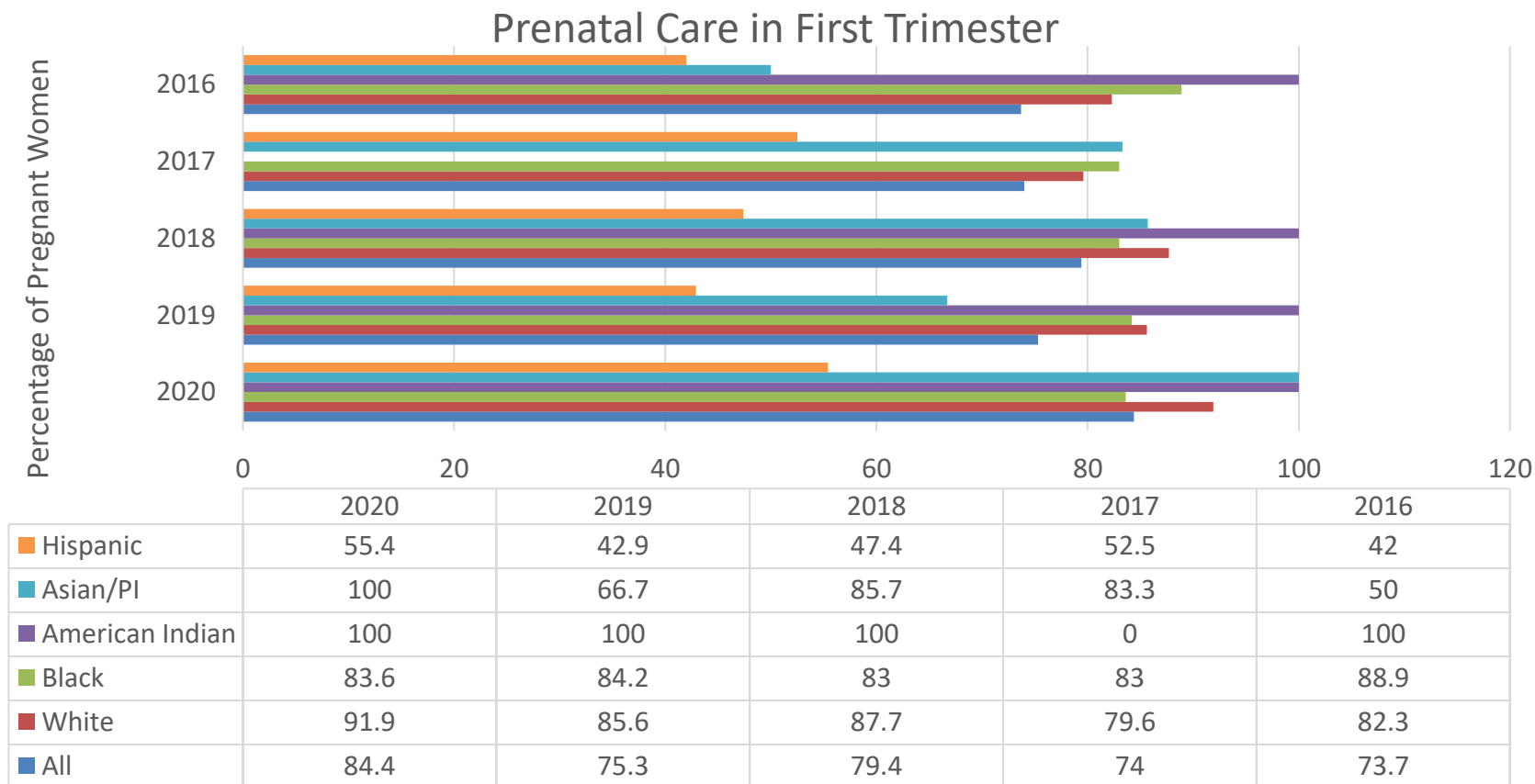
FY17=26

FY18 = 8

FY19 = 25

FY 20 = 40

# Prenatal Care



Hispanic Asian/PI American Indian Black White All

Source: Maryland Department of Health – Vital Statistics – Annual Reports, most recent 2020



# Indicator & Strategic Priority Ranking

<b>CONCERN FY23</b>	<b>MONITOR FY23</b>
<b>Child Poverty</b>	Immunizations
<b>Housing</b>	Obesity
<b>Childhood Hunger</b>	Physical Activity
<b>Youth Homelessness</b>	High School Drop Out Rate
<b>Impact of Incarceration</b>	Educational Attainment 18-24 year olds
<b>Mental Health</b>	Juvenile Felony Offenses
<b>Substance Use (Youth)</b>	Disconnected Youth
<b>Vaping (Youth)</b>	Youth Employment 16-19 and 20-24 year olds
<b>Affordable Health Insurance</b>	High School Program Completion
<b>Kindergarten Readiness</b>	School Attendance
<b>Child Maltreatment</b>	Crime
<b>Low Birth Weight Babies</b>	Out of Home Placements
<b>Prenatal Care</b>	Births to Adolescents

# FY23 TFN Board Prioritization of Community Concerns

EDUCATION AND EMPLOYMENT	
7	<b>Affordable Child Care</b>
4	<b>Kindergarten Readiness</b>
1	3 <sup>rd</sup> Grade Reading Level
1	High School Students Not Ready for Graduation (workforce and college readiness)
	Internet Access
HEALTH	
14	<b>Mental Health</b>
5	<b>Emotional Trauma in Youth</b>
3	Health Insurance (disparities in access)
1	Alcohol and Drug Use
	Vaping and Tobacco
FAMILIES AND COMMUNITIES	
6	<b>Affordable Housing</b>
5	<b>Child Poverty</b>
1	Trouble Affording Monthly Expenses
*	<b>Racial Disparities / Racism</b> (*identified as a lens impacting all areas of concern)