

Talbot County Results and Indicator Data FY 21

Compiled by the
Talbot Family Network



FY22 Community Partnership Agreement

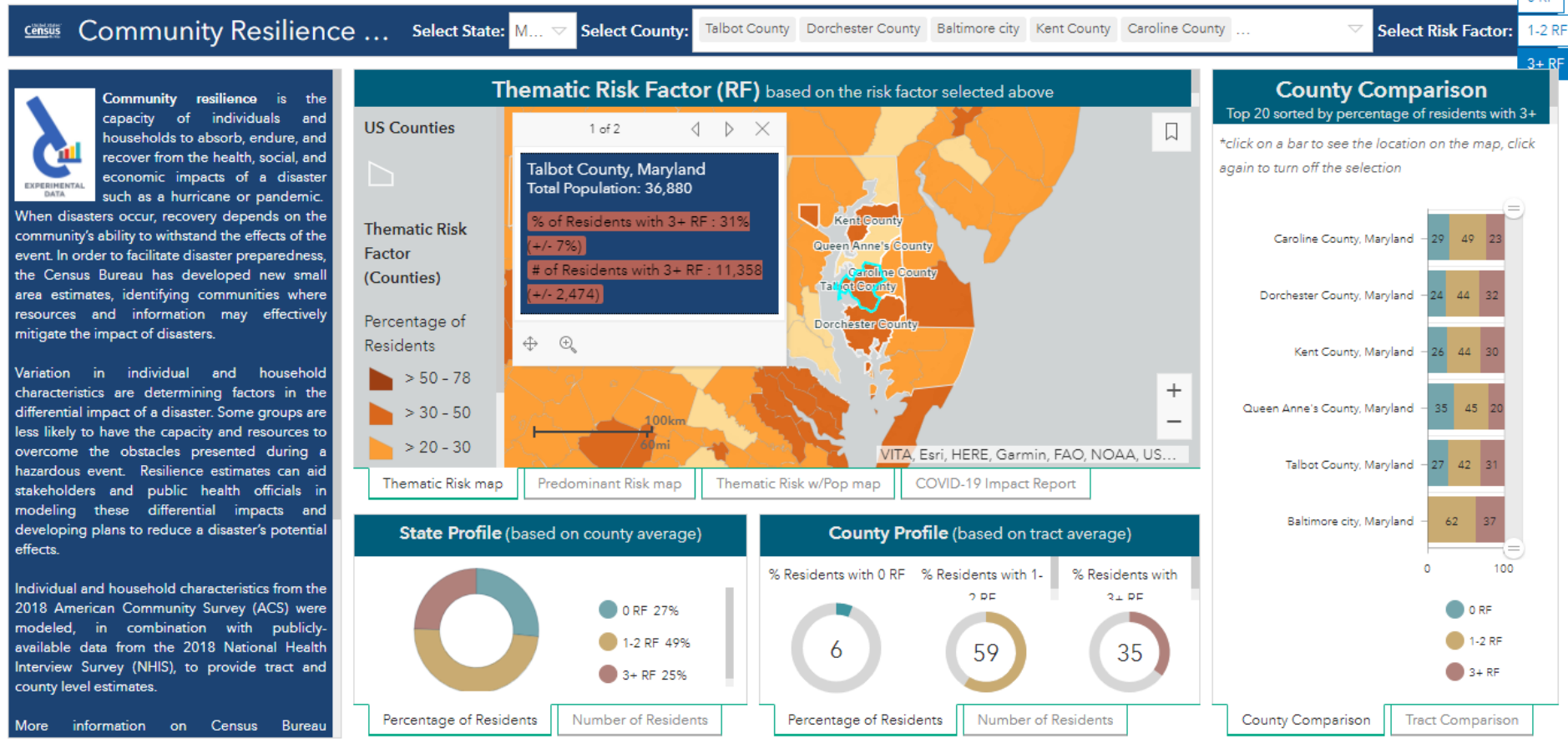
Notice of Funding Availability (NOFA)

The Children's Cabinet has adopted **three overall themes**.

These themes or lenses should be applied to all programs/strategies proposed for FY22 as follows:

- ✓ **Race Equity**
- ✓ **Adverse Childhood Experiences (ACES) and trauma-informed practice**
- ✓ **Research-Based Practices**

COVID-19 Resiliency



Source: US Census Bureau [Community Resilience Estimates Dashboard \(arcgis.com\)](https://arcgis.com)

Maryland

- **24.3%** **Expected Loss of Employment**
- 51.4% Telework
- 9.4% Food Scarcity
- 7.7% Housing Insecurity – not current or soon will not be current
- **35.6%** **Likelihood of Eviction or Foreclosure**
- **32.9%** **Difficulty Paying for Usual Expenses**
- 77.2% Change in Post Secondary Ed Plan
- 11.8% Received Vaccine
- 57.8% Want Vaccine

Child Poverty

Child Poverty

FY13 – Monitor

FY16 – Monitor

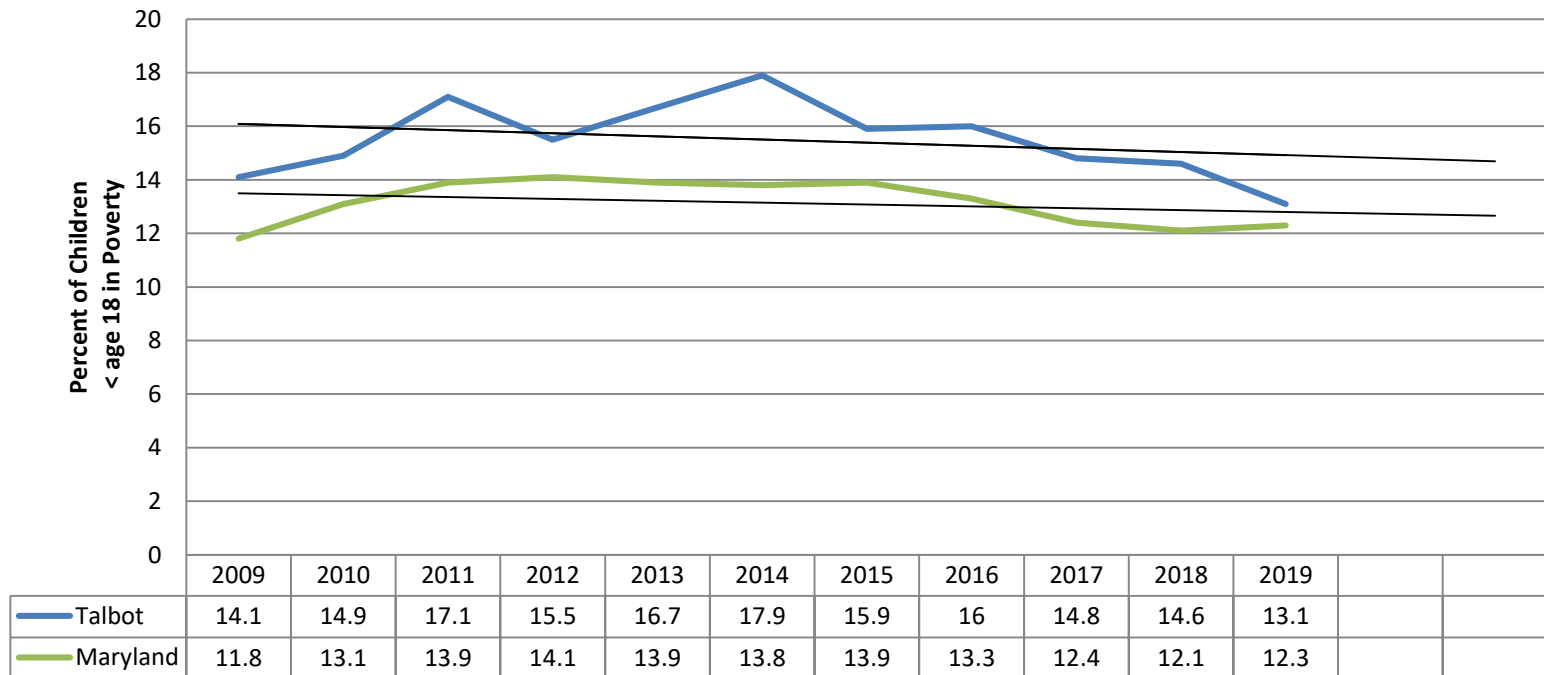
FY17 – Monitor

FY18 – Concern

FY19 – Concern

FY20 – Concern

FY21 – Concern



Source: US Census Bureau, Small Area Income and Poverty, 2019

Indicator: Child Poverty

Poverty	2016		2017		2018		2019	
	Tal	MD	Tal	MD	Tal	MD	Tal	MD
All Ages	3827 10.4%	9.7%	3347 9.1%	9.4%	3377 9.2%	9.1%	3210 8.7%	9.1%
< age 18	16%	13%	994 14.8%	12.4%	967 14.6%	12.1%	872 13.1%	12.3%
Families with children age 5-17	768 14.9%	12.2%	708 14.1%	11.6%	673 13.7%	11.6%	631 12.8%	11.9%

Source: US Census Bureau, Small Area & Income Poverty Estimates, 2019

Individuals Below Poverty	2016		2017		2018		2019	
All ages	Tal	MD	Tal	MD	Tal	MD	Tal	MD
Black	23%	14.7%	20.8%	14.1%	20.6%	13.6%	17.2%	13.3%
Two or More Races	26.4%	12.6%	26.1%	12.2%	15%	11.3%	13.1%	10.9%
Hispanic	29.2%	14%	27.6%	13.8%	27.1%	13.5%	18.3%	12.7%
White	8.8%	7.2%	8.2%	7.1%	7.8%	7%	7.1%	6.7%

Source: US Census, SAIPE 2019

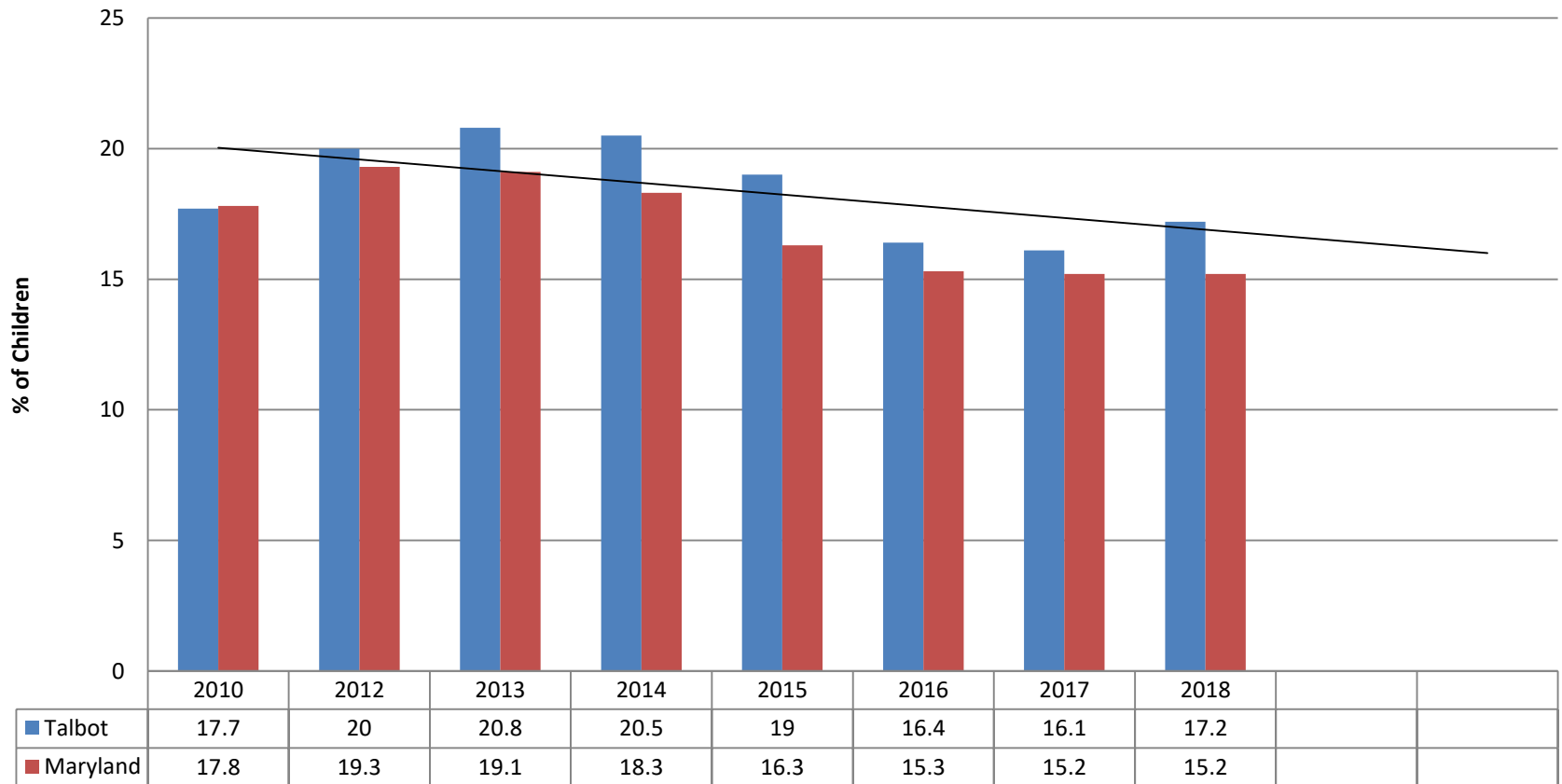
620 Households below poverty/16,826 Total Households
3.7% of Talbot County Households are below the poverty level.

Source: US Census, ACS, 5 year Estimates, 2019

Indicator: Hunger

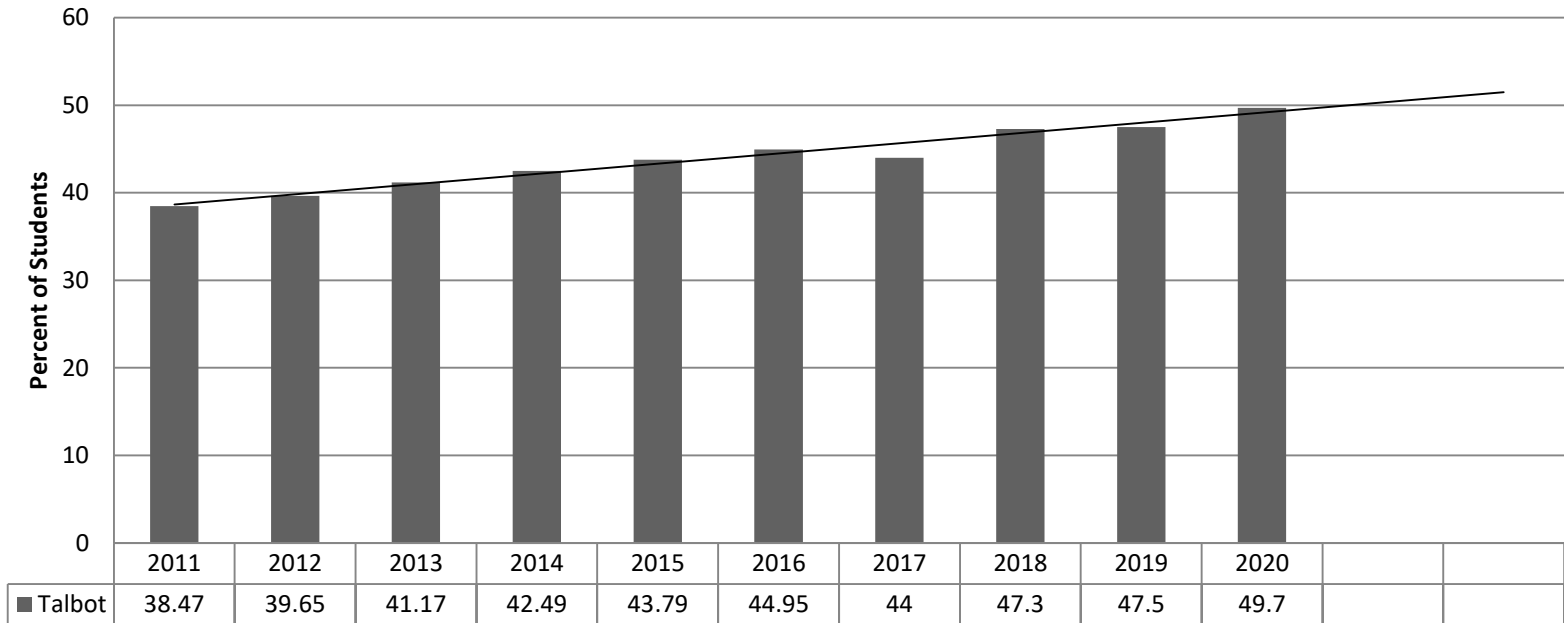
FY13 – Concern
 FY16 – Concern
 FY17 – Concern
 FY18 – Concern
 FY19 – Concern
 FY20 – Concern
 FY21 – Concern

Child Food Insecurity



Source: Feeding America
 Map the Meal Gap 2018 = most recent

Free and Reduced Meals Talbot County Public Schools



Source: TCPS, 1/21

FY 14 = 1,931 students
FY18 = 2,098

FY 15 = 2,038
FY19 = 2,248

FY 16 = 2,074
FY21 = 2,231

FY 17 = 2,135

Free Meals = 100% or less of Federal Poverty Guidelines
Reduced Meals = 100-185% of Federal Poverty Guidelines

Hunger and Race

Race	Race as % of School System Population	Students receiving FaRMs
White	54%	26% (645/2463)
Black	15%	80% (545/683)
Hispanic	22%	84% (854/1012)
Two or more	6%	51% (136/266)

Source: TCPS, 1/21

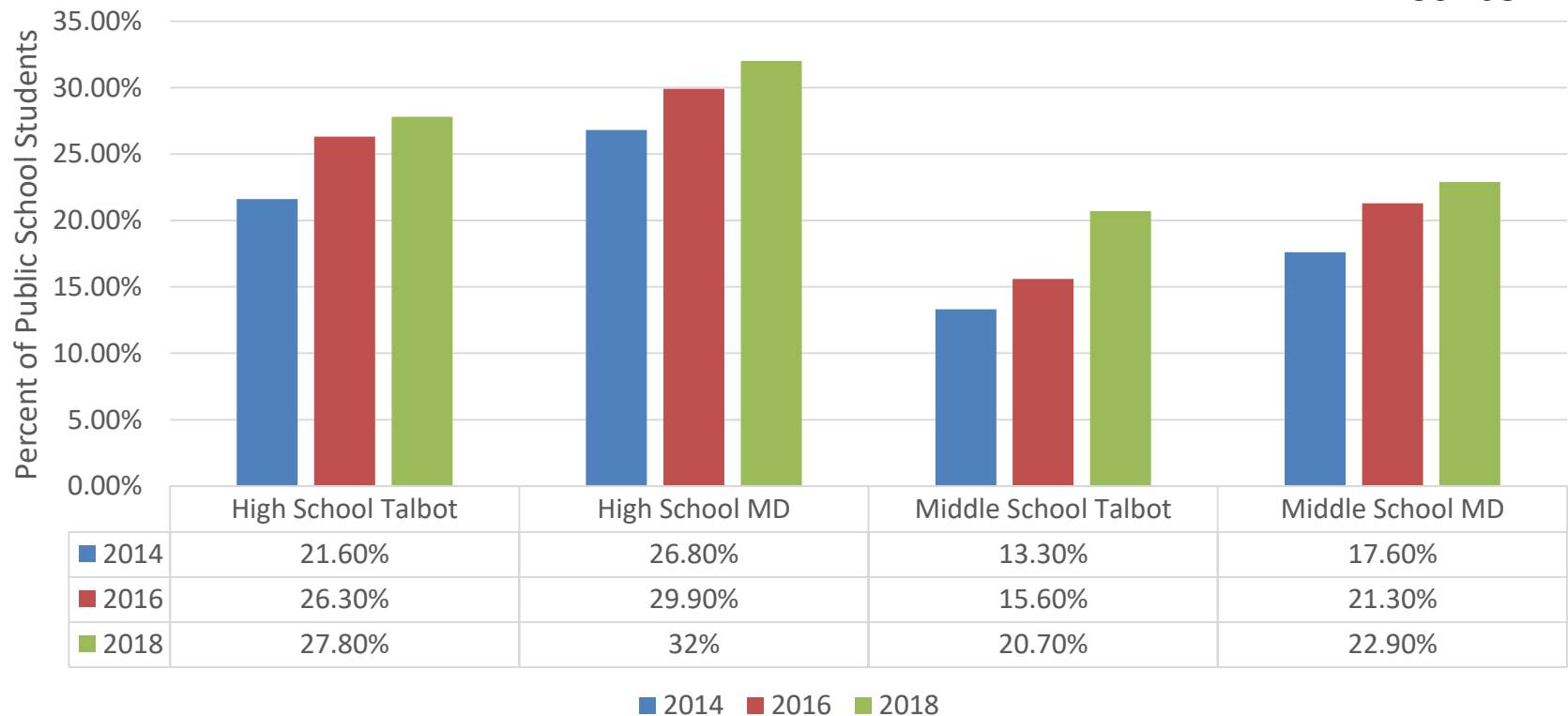
FaRMS by School

School	FaRMs	School Enrollment	FaRMs %
Chapel Elem	101	334	30.5%
Easton Elem	706	1,030	68.5%
Easton High	498	1,162	42.9%
Easton Middle	476	852	55.9%
St. Michaels Elem	133	322	41.3%
St. Michaels Middle/High	139	418	33.3%
Tilghman Elem	36	85	42.2%
White Marsh Elem	141	285	49.5%

Mental Health

Depressive Episode Public School Student Self Reporting

FY13 – Concern
FY16 – Concern
FY17 – Concern
FY18 – Concern
FY19 – Concern
FY20 – Concern
FY21 – Concern



Source – Youth Risk Behavior Survey – High School QN25 & Middle School QN14

The Question asked - During the past 12 months, did you ever feel so sad or hopeless almost every day for two weeks or more in a row that you stopped doing some usual activities?

Mental Health

% of Talbot High School Students, by sub group, that report depressive episode	2014	2016	2018
White	21.2%	25.4%	27%
Black	16.8%	20.2%	25.7%
Hispanic	27.8%	34%	25.7%
LGBQ	56.9%	53.3%	55.1%
Heterosexual	17.3%	22.9%	24.5%

Source: Youth Risk Behavior Survey, Maryland, Talbot County

2018 is most recent data

Impact of Incarceration on Children and Families

FY21 - Concern

- At Talbot County Department of Corrections, **the total census in-house was 58** as of Feb 2, 2021. At home on pre-trial supervision are 43 individuals. (Demographics next slide)
- **74 Talbot citizens are incarcerated in MD State Prisons** (5 female, 69 male) . 69% are inmates of color. (MD Department of Public Safety and Correctional Services, Feb 2021)
- **308 Talbot citizens on parole or probation.** 23% Female. 61% white, 37% Black and 2% Other. (MD Department of Public Safety and Correctional Services, Feb 2021)
- *Nationally, 52% of inmates (51% of men and 62% of women) are parents.* (BJS, 2010 – most recent)

Talbot County Detention Center

In-House	Total Population with TCDC	TCDC Population Percentage	Total Talbot Population
Male	54	93.1%	47.4%
Female	4	6.9%	52.6%
White	14 Male 2 Female	27.5%	82.9%
Black/AA	27 Male 1 Female	48.2%	10.5%
Hispanic	10 Male 1 Female	19%	6.8%
Other	2 Male	3.4%	<1%
Asian	1 Male	1.7%	1.4%

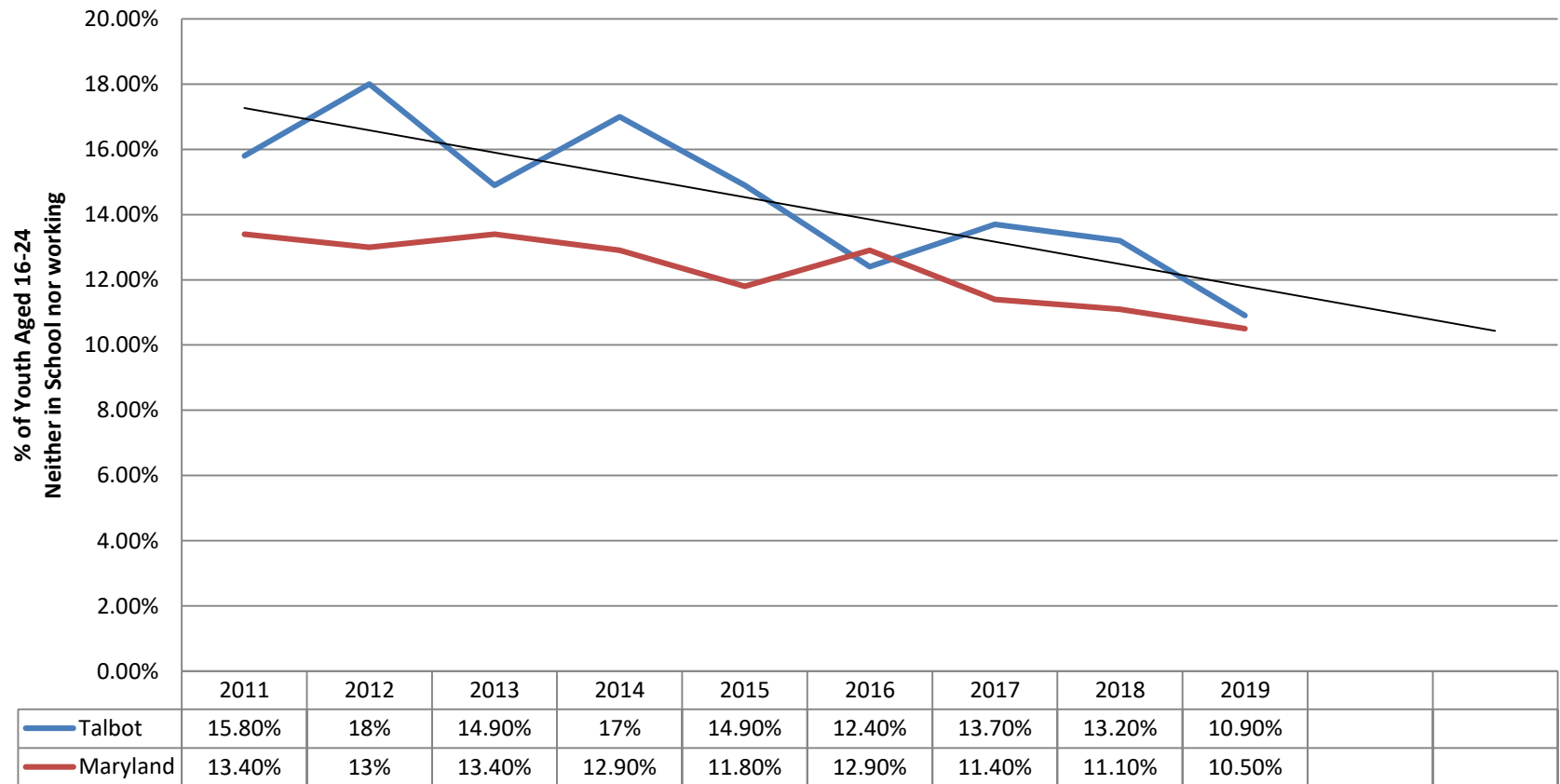
Sources: Talbot County Detention Center and US Census, ACS, 5 year estimate, 2019

Disconnect Youth

Age 16-24 Neither in school nor working

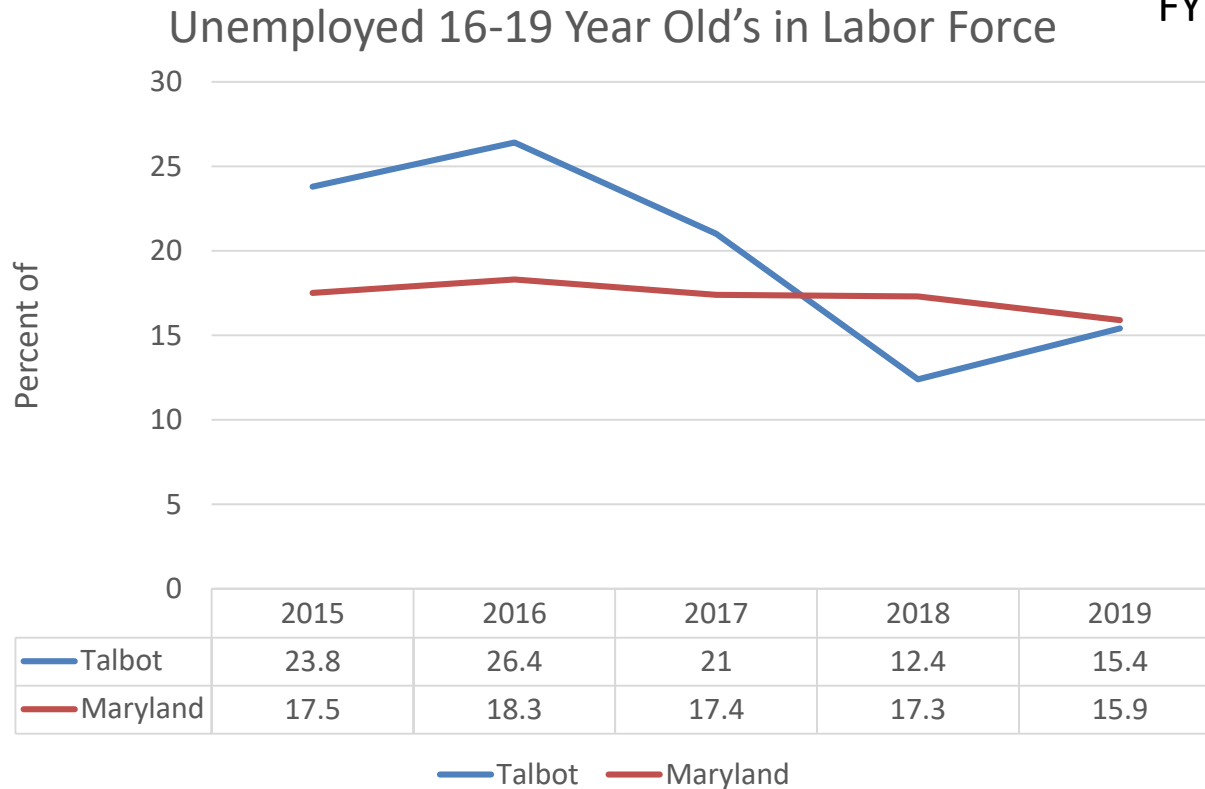
FY17 – Concern
 FY18 – Concern
 FY19 – Concern
 FY20
 FY21 – Monitor

Disconnected Youth



Youth Employment

FY17 – Monitor
FY18 – Monitor
FY19 – Monitor
FY20 – Monitor
FY21 –



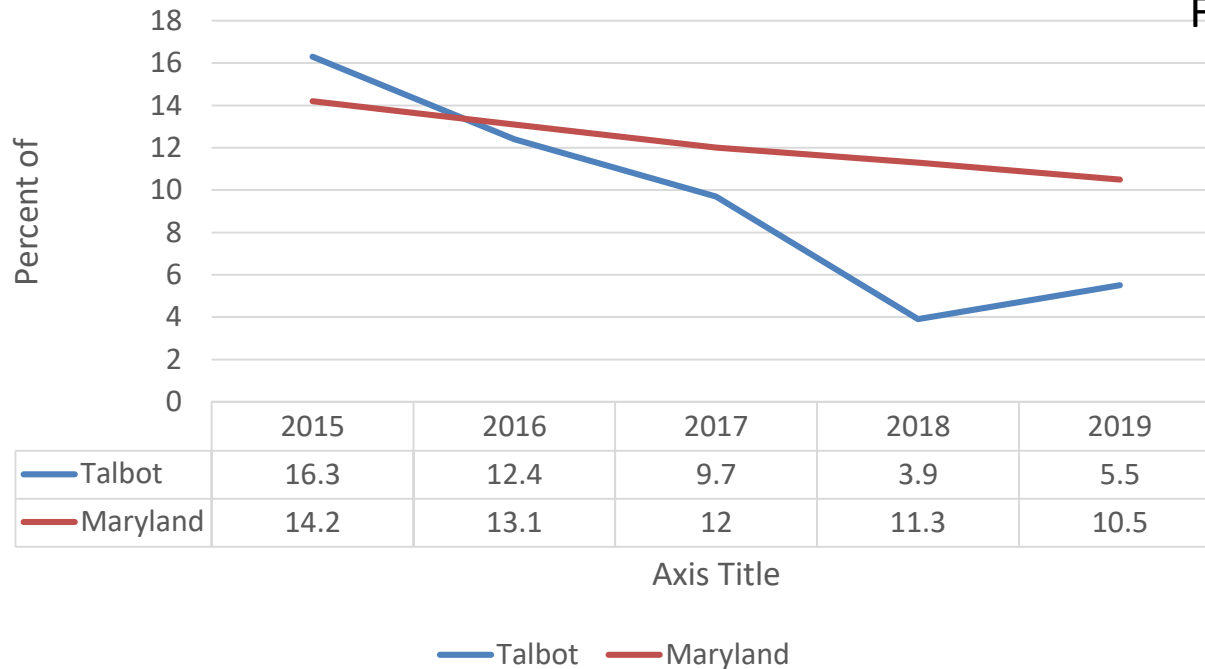
Actual #	2015	2016	2017	2018	2019
Unemployed	373	416	325	180	258

Source: ACS, US Census, most recent 2019

Youth Employment

Unemployed 20-24 Year Old's in Labor Force

FY17 – Monitor
FY18 – Monitor
FY19 – Monitor
FY20 – Monitor
FY21 –



Actual #	2015	2016	2017	2018	2019
Unemployed	295	222	165	62	84

Source: ACS, US Census, most recent 2019

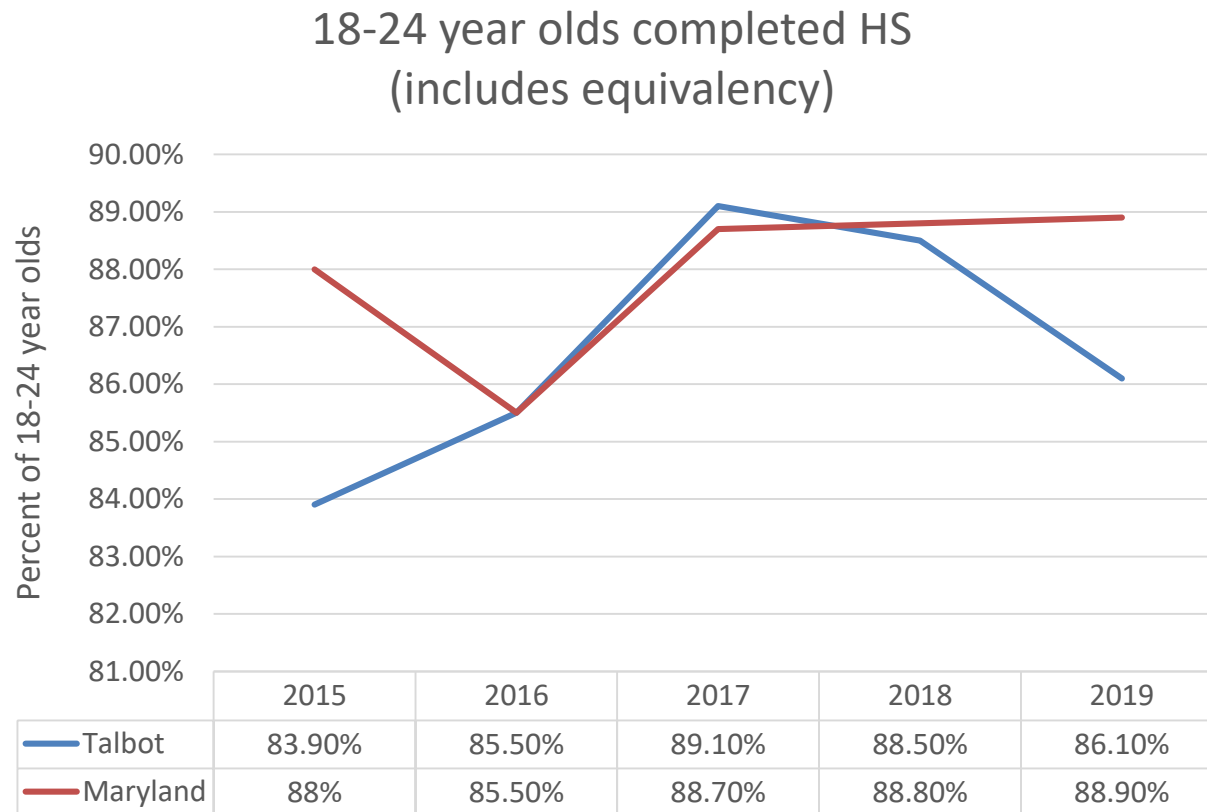
Race (all ages in workforce) Talbot	Unemployment Rate				
	2015	2016	2017	2018	2019
White	6.1%	5.5%	3.8%	2.8%	2.5%
Black	8%	9.1%	7.1%	4.6%	7.9%
Two or More Races	19.1%	9.3%	18%	12.1%	10.7%
Latino	6.4%	1.0%	.9%	1.1%	1.2%
Other	8.2%	8.4%	4.3%	3.8%	0%

Source: US Census Bureau, ACS, 5 year estimates, Employment

Talbot County Census data from **2019** shows **11.4%** of individuals employed part-time lived below the poverty level, while only **2.3%** of individuals employed full-time were considered below poverty level. This trend is reflected across the country. (US Census, ACS **2019**, 5 year estimates)

Educational Attainment

New



Source: US Census, ACS, most recent 2019

Indicator: High School Dropout Rate

High School Drop Out Rate

FY16 –Positive Progress

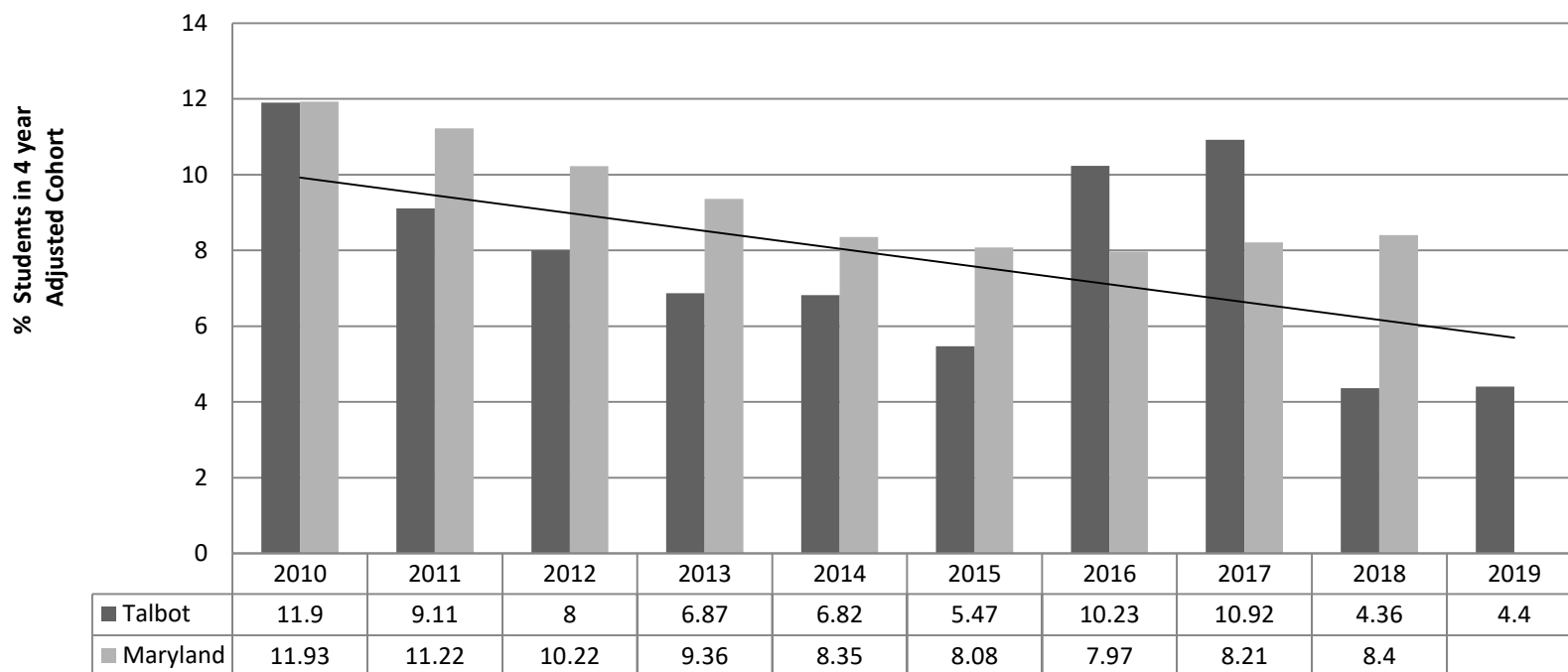
FY17 – Concern

FY18 – Concern

FY19 – Monitor

FY20 – Monitor

FY21 – Monitor



Source: TCPS, 1/20 – Maryland rate not released

High School Drop Out Data

Graduation Year	# of Dropouts	# Students in Class/Cohort	Dropout Rate
2013	25	364	6.87%
3014	24	352	6.82%
2015	17	311	5.47%
2016	36	352	10.23%
2017	39	357	10.92%
2018	16	344	4.65%
2019	15	341	4.4%
2020	1*	382	.3%
2021	2*	356	.6%

* 3 students total dropped out during 2019-20 school year.
This shows those 3 students by their graduating class.

Source: MSDE, 2020. Unofficial data provided by TCPS.

High School Dropout Rate

Subgroup	FY 15	FY 16	FY 17	FY18	FY19	FY20
Hispanic/ Latino	14.29% (3)	29.03% (9)	35.09% (20)	10.87% (5)	20.7% (12)	1.4% (1)
Black					1.8% (1)	1.5% (1)
2 or more races					0%	6.7% (1)
White					1% (2)	0%
Limited English Proficient		70% (7)	63.33% (19)	45.455% (5)	35.3% (12)	3.8% (1)
FARMS	9.68% (9)	17.36% (21)	19.38% (25)	8.929% (10)	9.2% (12)	1.1% (3) <small>(3 students total dropped out during the 2019-20 year)</small>

Source: MSDE. 2020 Unofficial data provided by TCPS, 2/21

MSDE Report Card on Graduation

Graduation rate (H)	ADJUSTED COHORT GRADUATION RATE					
	FOUR-YEAR			FIVE-YEAR		
	PERCENT	ANNUAL TARGET	IMPROVEMENT	PERCENT	ANNUAL TARGET	IMPROVEMENT
Black/African Amer.	84.91 %	✗	✗	86.79 %	✓	✗
Hispanic/Latino	84.78 %	✓	✓	84.78 %	✓	✓
White	97.84 %	✓	✓	98.7 %	✓	✓
Econ. Disadvantaged	89.47 %	✓	--	91.23 %	✓	--
All Students	94.19 %	✓	✓	94.78 %	✓	✓

Footnote: Only Student Groups with 30 or more students are reported. Student Groups include the following: American Indian/Alaskan Native, Asian, Native hawaiian or Other Pacific Islander, Black/African American, Hispanic/Latino of any Race, White, Two or More Races, Students with Disabilities, and English Learners. Economically Disadvantaged is not available until Year 2 Accountability. ✓ =Met ✗ =Not Met

Source: MSDE Report Card, Most Recent SY 18-19

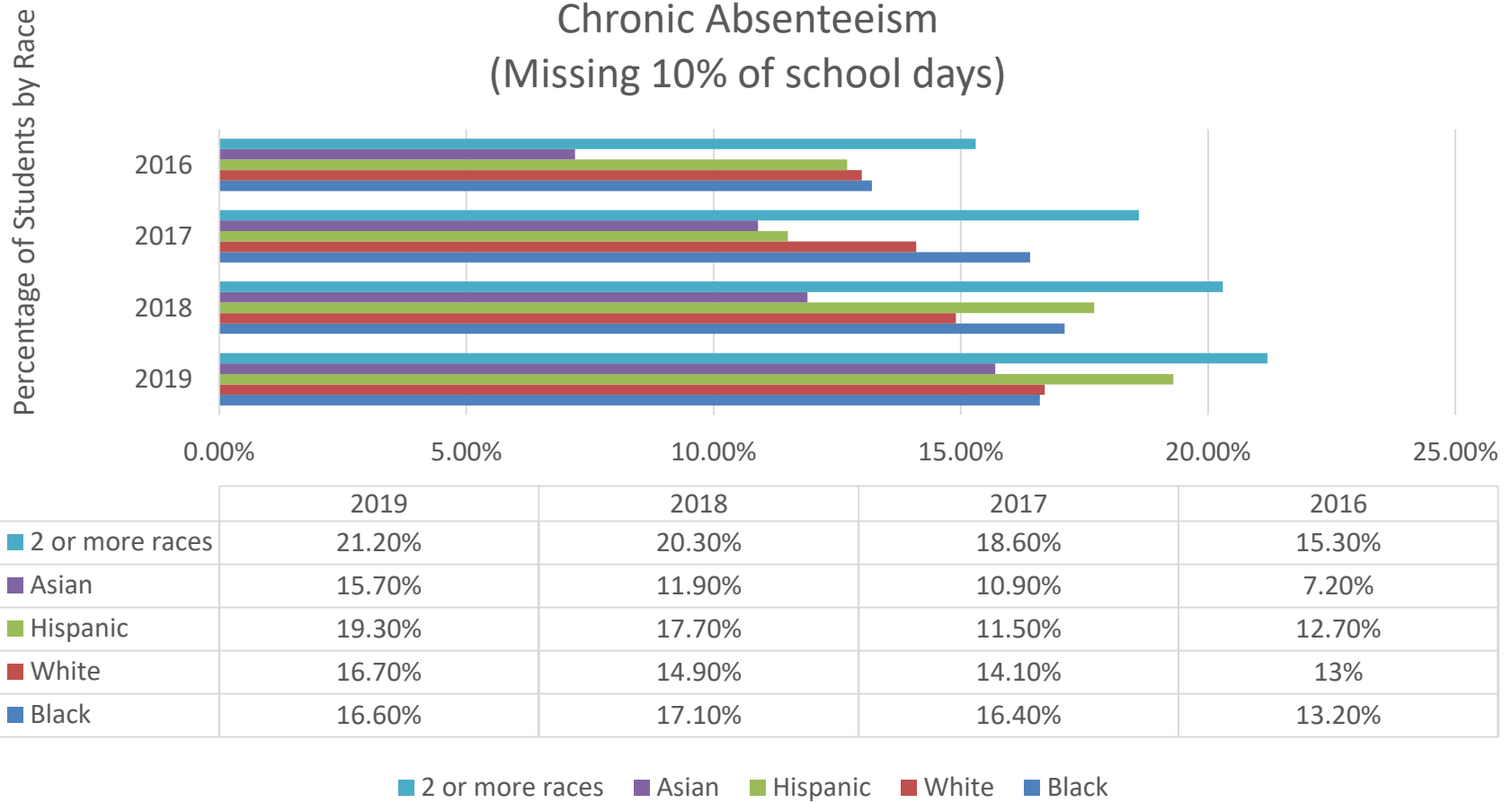
4 Year Cohort Graduation Rates

	2020	2019	2018	2017	2016
Talbot County	95.5%	93.9%	93.9%	87.11%	85.51%
Black	95.5%	94.7%	84.91%	87.23%	78.85%
Hispanic/ Latino	86%	75.9%	84.78%	61.40%	64.52%
White	97.5%	97.6%	>95%	92.95%	89.68%
FARMS	92.1%	87%	88.39%	77.52%	74.38%

Source: Talbot County Public Schools, Unofficial 2020, 2/21

School Attendance

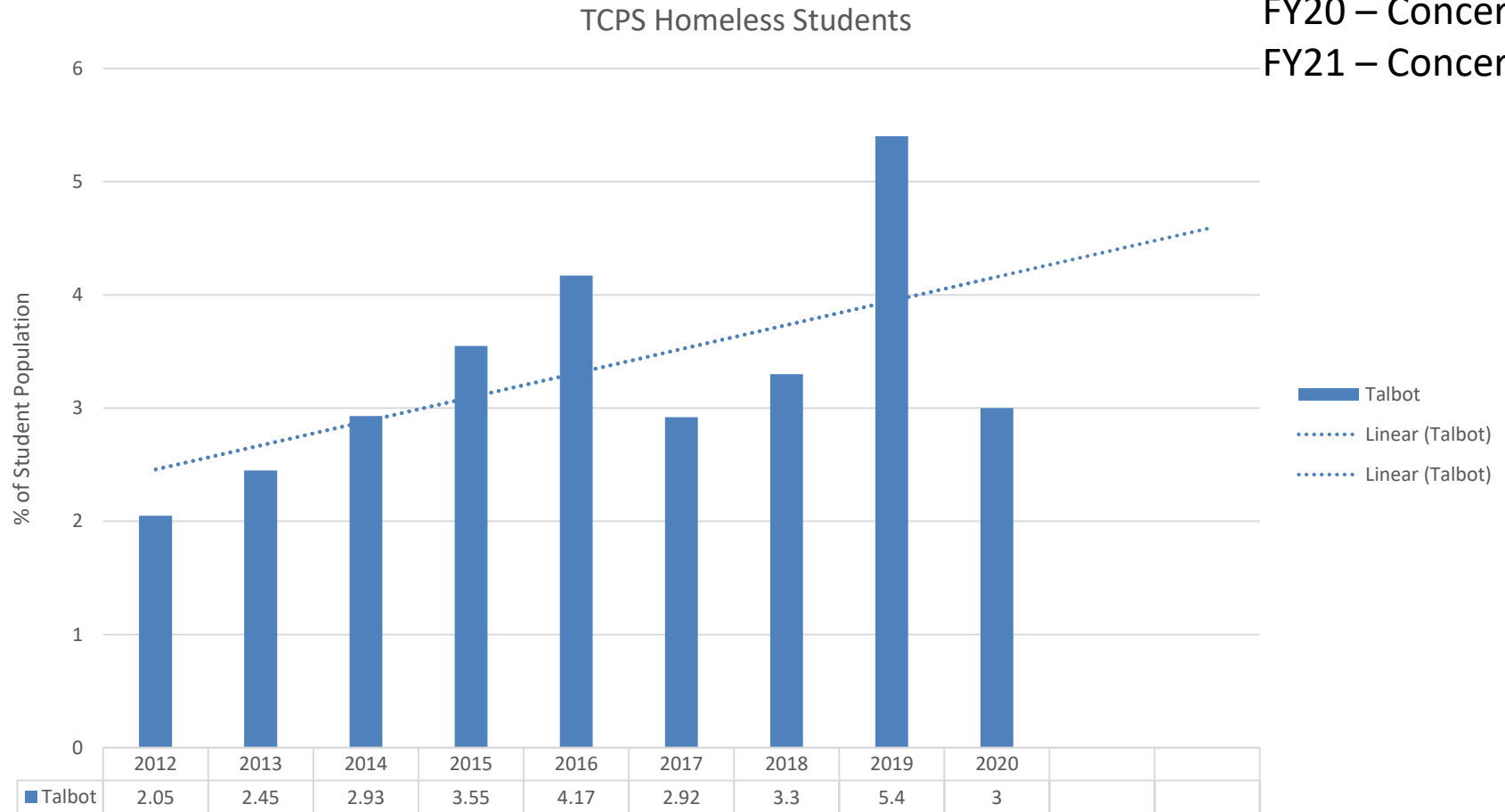
New



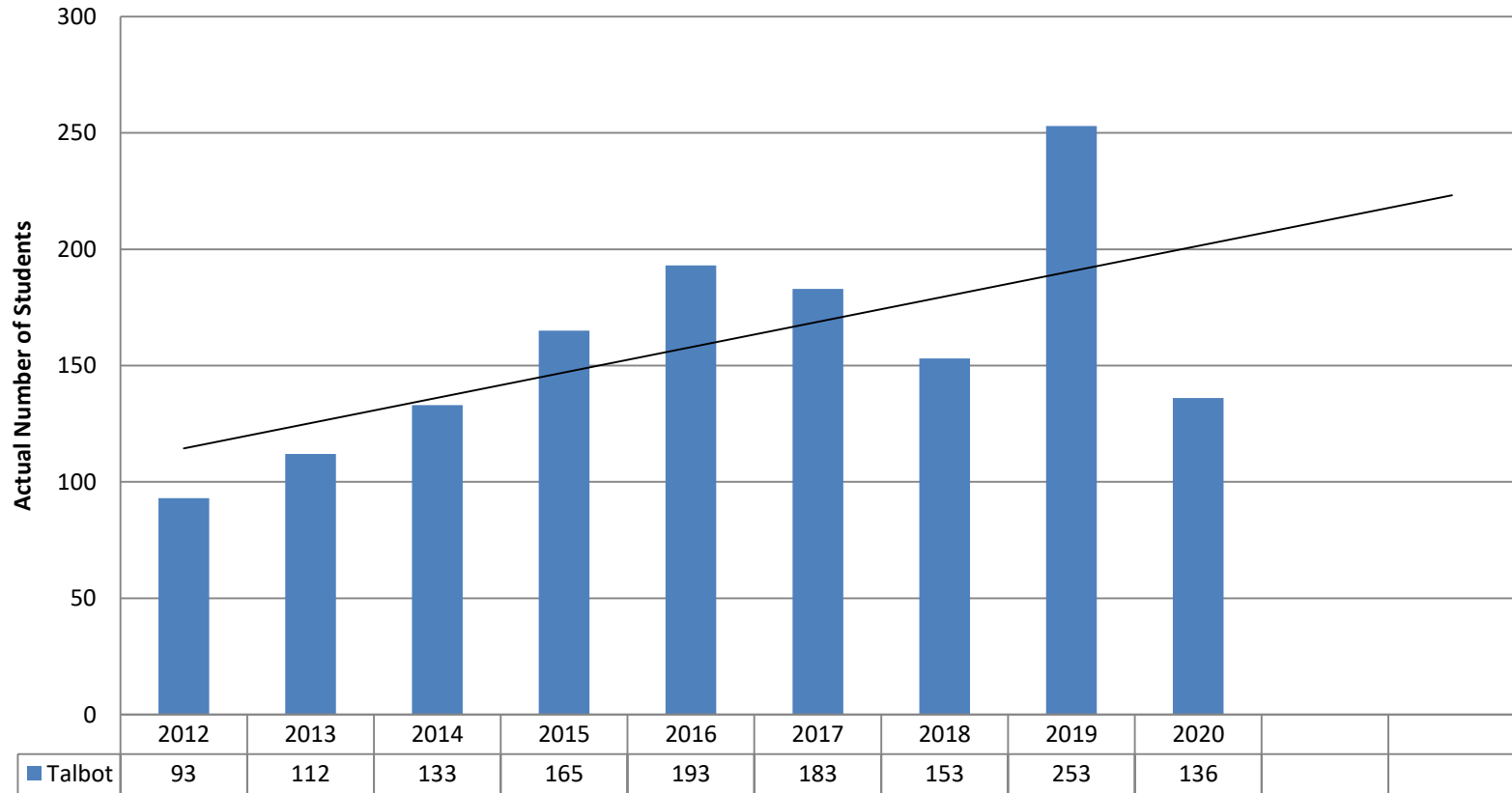
Source: MSDE Report Card, most recent 2019

Indicator: Homelessness

FY13 – Monitor
 FY16 – Concern
 FY17 – Concern
 FY18 – Concern
 FY19 – Concern
 FY20 – Concern
 FY21 – Concern



TCPS Homeless Students



Source: TCPS, 2/21

FY 18 – 3.3% of total TCPS population.

Percent by race of total homeless Hispanic – 48%, AA – 25%, White – 22%, Multi-race – 6%

FY 19 – 5.4% of total TCPS population.

Percent by race of total homeless Hispanic-62%, AA-19%, White – 10%, Multi-race – 8%

FY 20 – 3% of total TCPS population.

Percent by race of total homeless Hispanic- 59%, AA – 18%, White 19%, Multi-race – 4%

Academic Achievement

FY20 - Concern (racial disparities)
FY21 – Concern (racial disparities)

ACHIEVEMENT (E/M/H)	PERCENT PROFICIENT					
	MATH			ENGLISH LANGUAGE ARTS		
	PERCENT	ANNUAL TARGET	IMPROVEMENT	PERCENT	ANNUAL TARGET	IMPROVEMENT
Asian	56.3% / 56.3% / na	✓	✓	62.5% / 68.8% / na	✓	✓
Black/African Amer.	21.7% / 7.4% / 19.2%	✗	✓	25.3% / 19.5% / 24%	✗	✓
Hispanic/Latino	22.5% / 8.3% / 18.2%	✗	✗	31.3% / 25% / 30.2%	✓	✓
White	56.8% / 30.6% / 53.3%	✓	✓	60.7% / 46.2% / 68.8%	✓	✓
Two or more races	39.1% / 20% / 70%	✓	✓	53.1% / 35.6% / na	✓	✓
Students w/Disabilities	13.5% / 4.2% / 14.3%	✗	✓	12.4% / 5.1% / 23.8%	✓	✓
English Learner	10.3% / 0% / 4.3%	✓	✓	9.6% / 2.1% / 8.7%	✓	✓
Econ. Disadvantaged	24.8% / 8.5% / 20.4%	✗	✗	31.9% / 20.8% / 34%	✗	✓
All Students	43% / 22.8% / 44%	✗	✓	48.6% / 38.1% / 56.7%	✓	✓

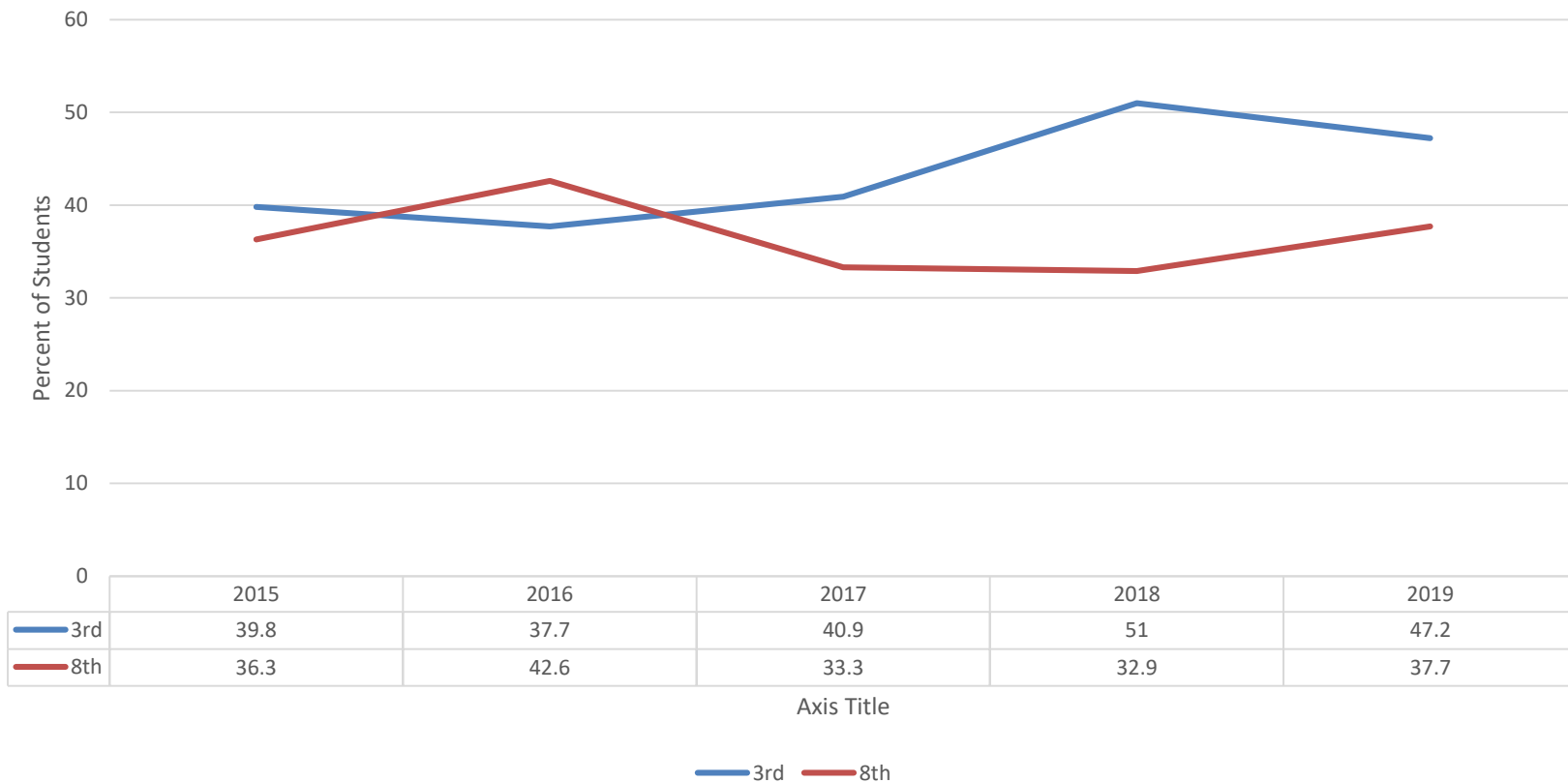
Footnote: Only Student Groups with 10 or more students are reported. Student Groups include the following; American Indian/Alaskan Native, Asian, Native Hawaiian or Other Pacific Islander, Black/African American, Hispanic/Latino of any Race, White, Two or More Races, Economically Disadvantaged, Students with Disabilities, and English Learners. ✓ =Met ✗ =Not Met

MSDE report card. Most recent SY 18-19.

MD Comprehensive Assessment Program - Reading

New

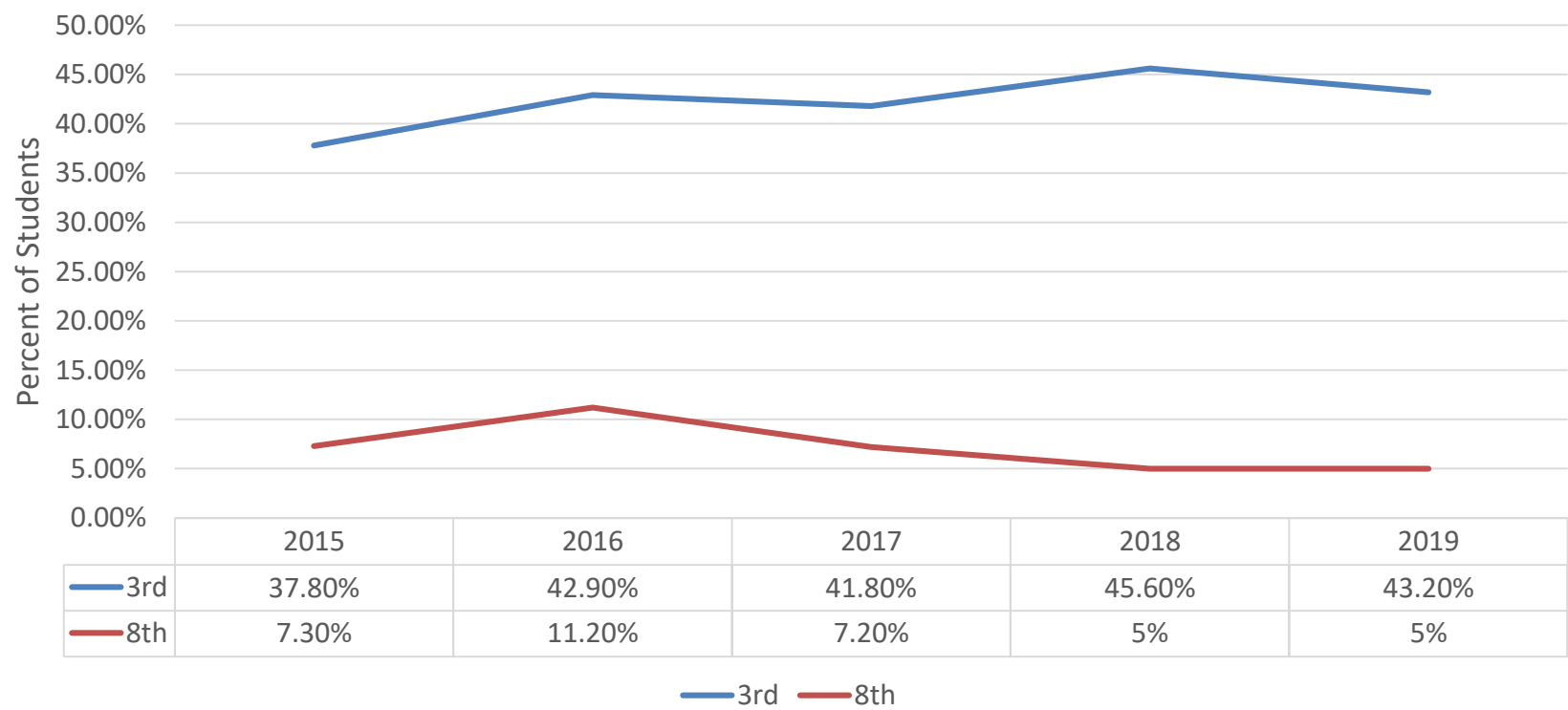
MCAP: Reading: 3rd and 8th Grade Student Performing at or Above Performance Level 4



Source: MSDE Report Card, most recent 2019

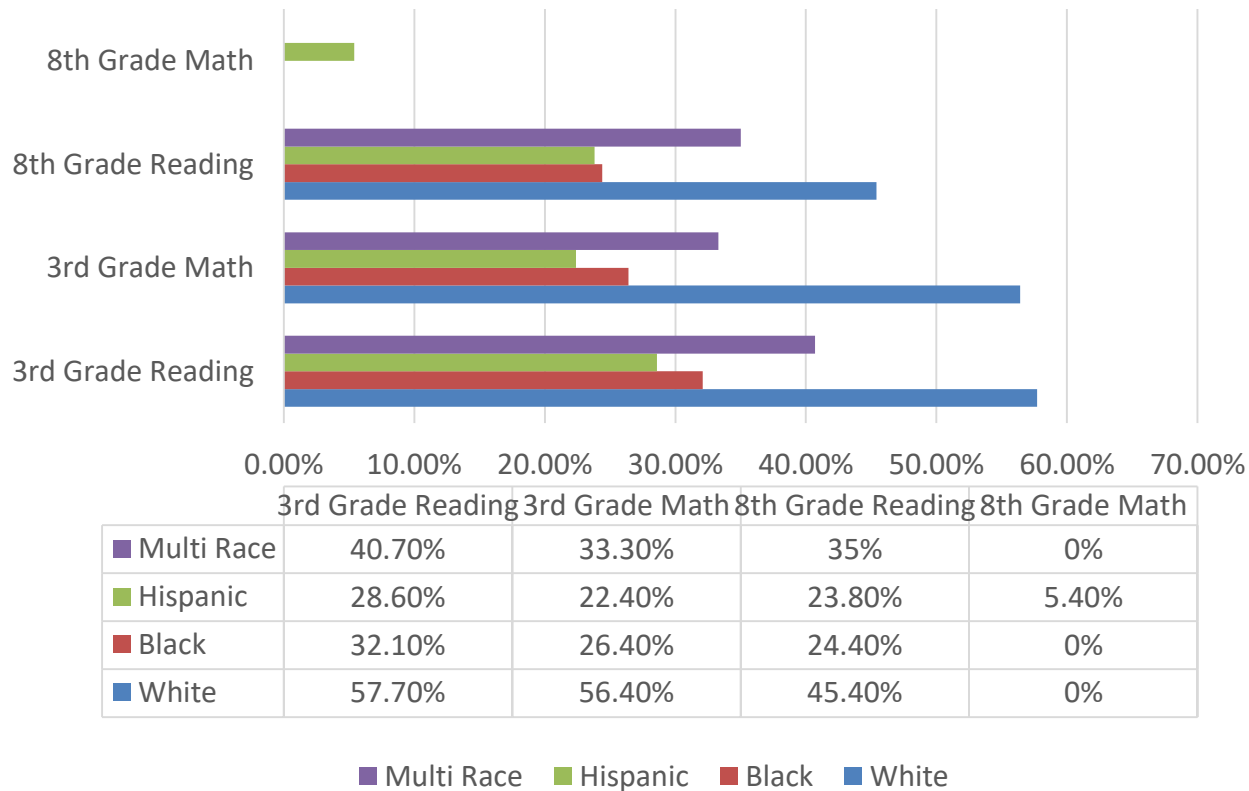
MCAP - Math

MCAP: Math: 3rd and 8th Grade Students Performing at or Above Level 4



Source: MSDE Report Card, most recent 2019

2019 MCAP 3rd and 8th Grade By Race



NOTE – 0% in 8th Grade Math should be < 5%

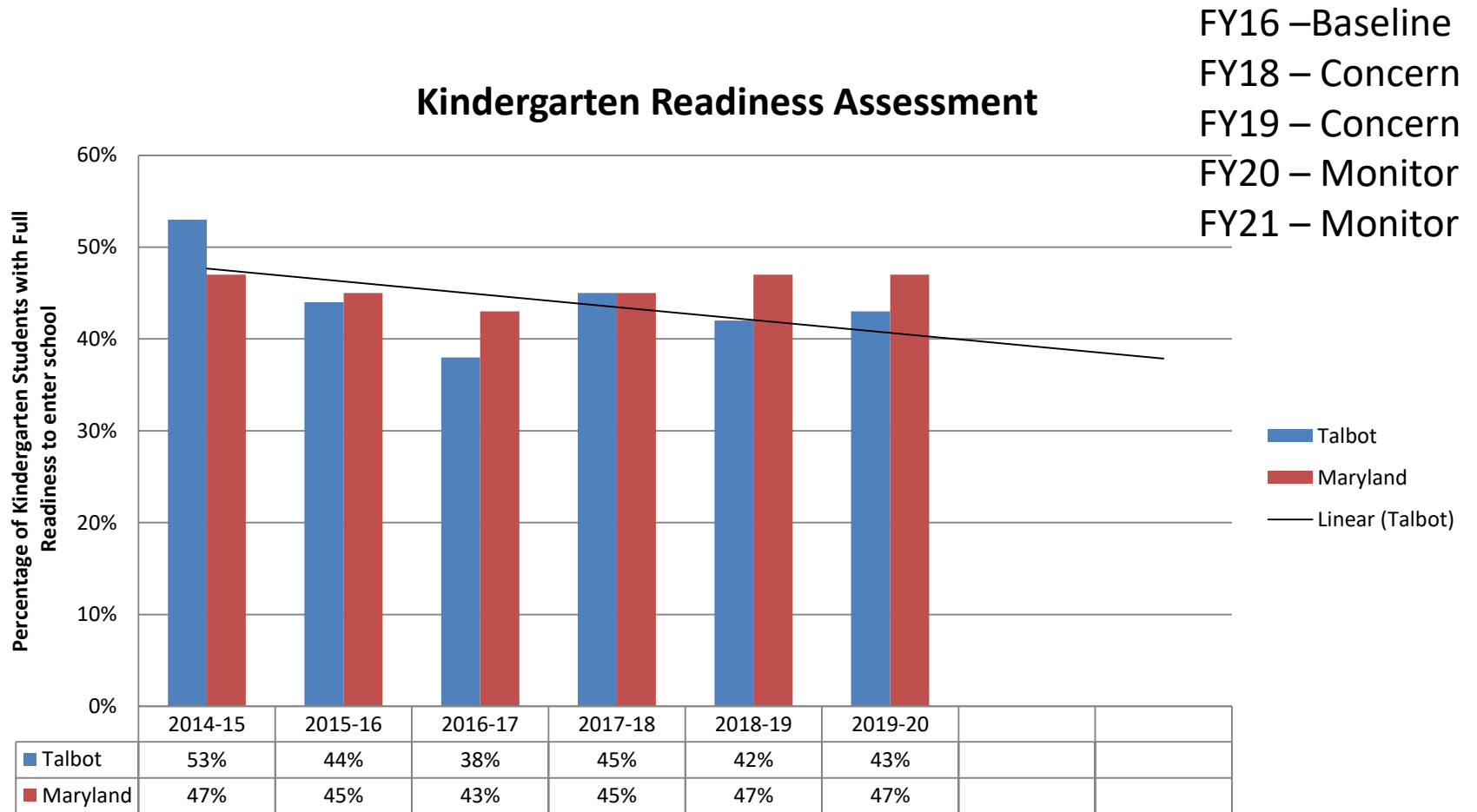
Source: MSDE – Most recent

MSAA: Math and English

Percent of students (8th and 11th) Scoring at or Above Proficient on Multi-State Alternative Assessment

Talbot has too few students so data is not available via MSDE report card

Indicator: Kindergarten Assessment



SY19-20 – Demonstrate K Readiness by race – 37% Black, 30% Asian, 23% Hispanic, 54% 2 or more races, 58% white

Source: 2019-20 Kindergarten Readiness Assessment Report

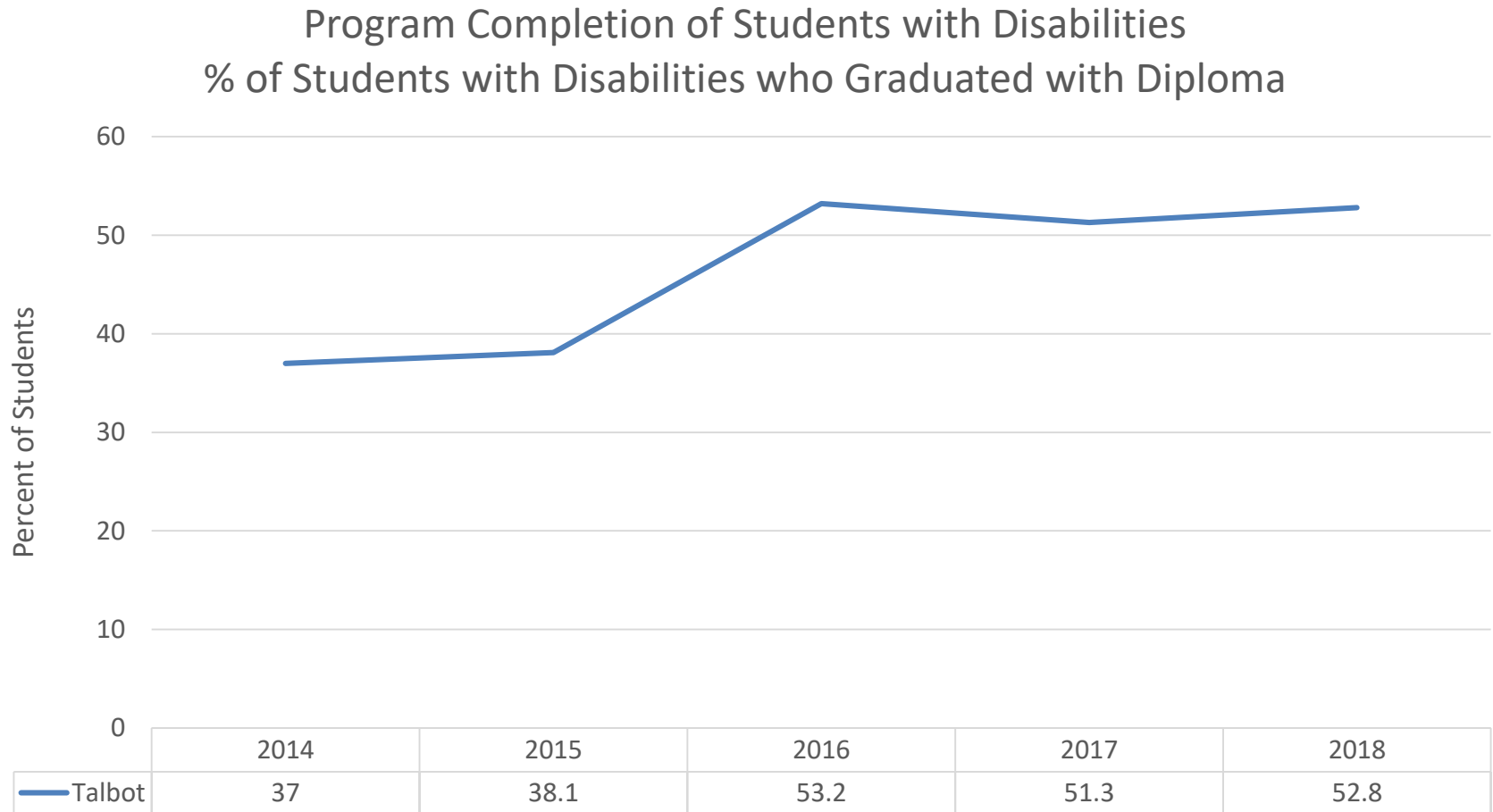
Indicator: HS Completion of Students with Disabilities

FY 13 – Positive Progress

FY 16- Positive Progress

FY 17- Positive Progress

FY 18 - Positive Progress



Source: MSDE, most recent

Indicator: High School Program Completion

FY16-17 – More Information
 FY18 – More Info Needed
 FY19 – Monitor
 FY20 – Monitor
 FY21 – Kelly to check data

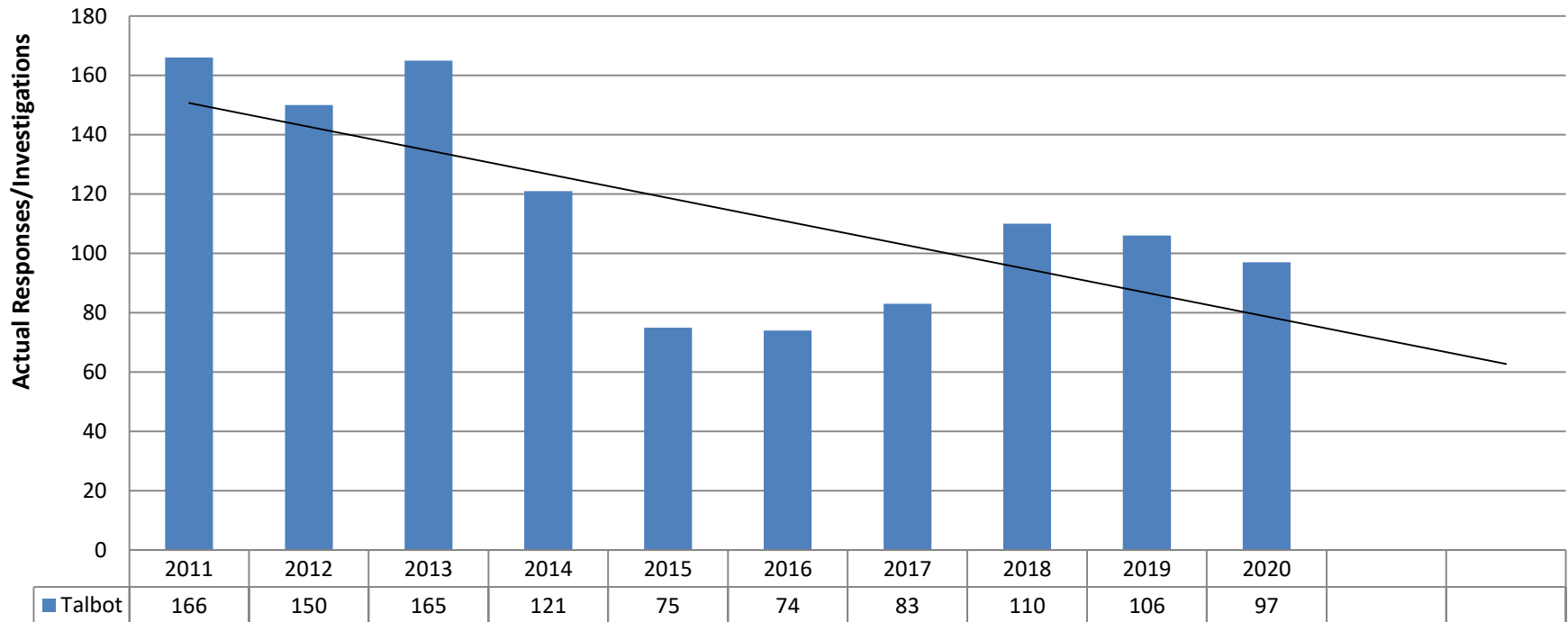
Completion Category:	2014	2015	2016	2017	2018	2019
a. Univ MD Course Requirements	26.1%	36.7%	30.1%	53.2%	83	86 (25.7%)
b. Career & Tech Ed Program Requirements	26.7%	27.3%	28.8%	23.6%	98	75 (22.5%)
c. Both Univ & Career / Tech Requirements	30.9%	11.4%	21.8%	19.4%	91	89 (26.6%)
d. Rigorous High School Program Indicator	27.9%	26.3%	31.1%	33.9%	105	114 (34.1%)
e. At least one of the above categories	84.1%	75.4%	80.8%	78.8%	1	

MSDE, most recent

Indicator: Maltreatment

FY13 – Monitor
FY16 – no data
FY17 - Monitor
FY18 – Monitor
FY19 – Concern
FY20 – Concern
FY21 – Concern

Talbot Child Protective Services Responses



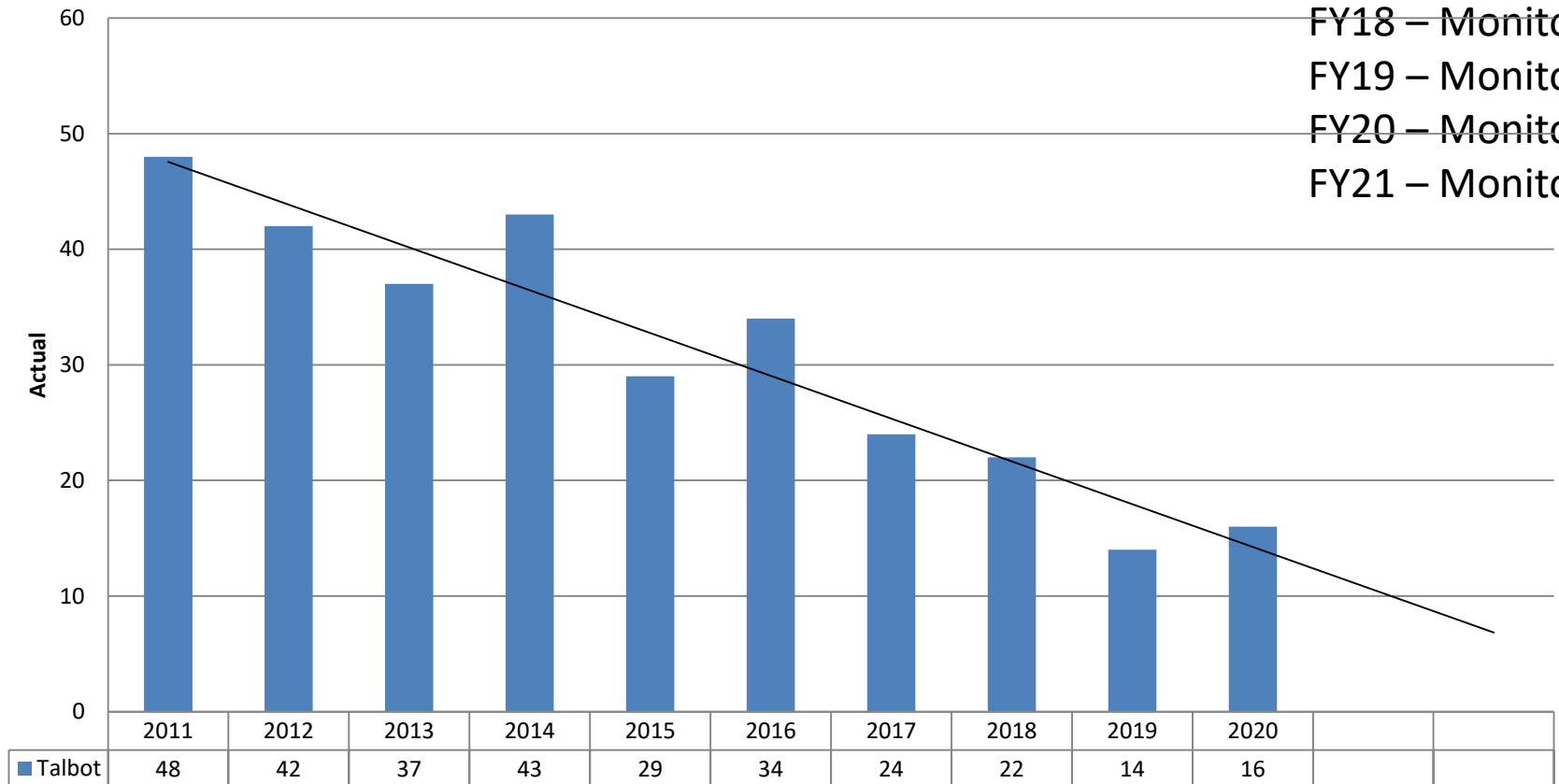
Source:

Talbot County Department of Social Services, racial demographics unavailable – in data development

Indicator: Out-of-Home Placement

FY13 – Monitor
 FY16 –Monitor
 FY17 – Monitor
 FY18 – Monitor
 FY19 – Monitor
 FY20 – Monitor
 FY21 – Monitor

Talbot Out of Home Placement

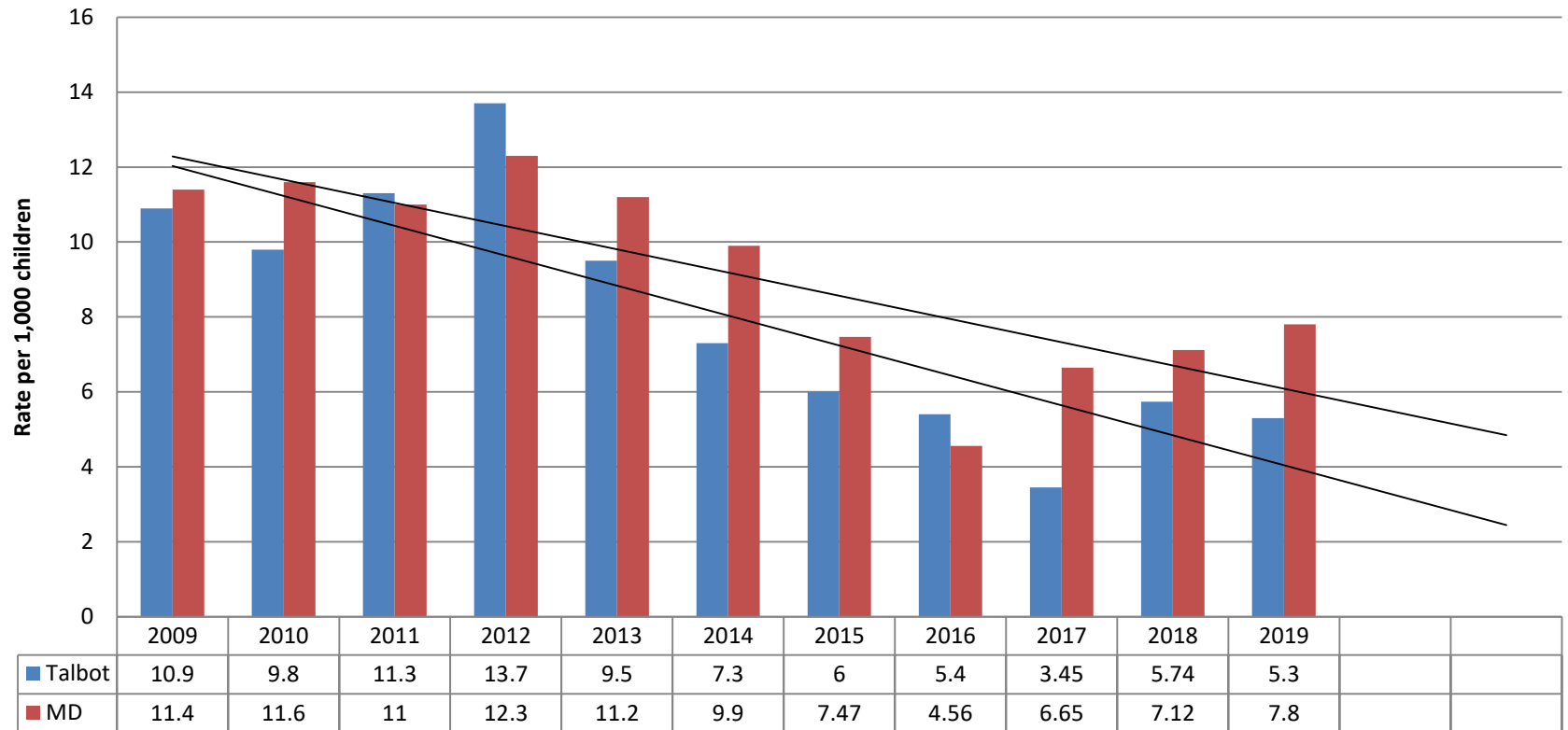


2019 – By Race – White-8, Black -3, Multi-Race – 3

2020 – By race – White-8, Black-8

Source: Talbot County Department of Social Services

Out of Home Placements Rate per 1,000 children



Source: DHR FY19 Out of Home Placement and Family Preservation Plan, most recent

Local Indicator: Substance Use

FY13 – Concern

FY16 – Concern

FY17 – Concern

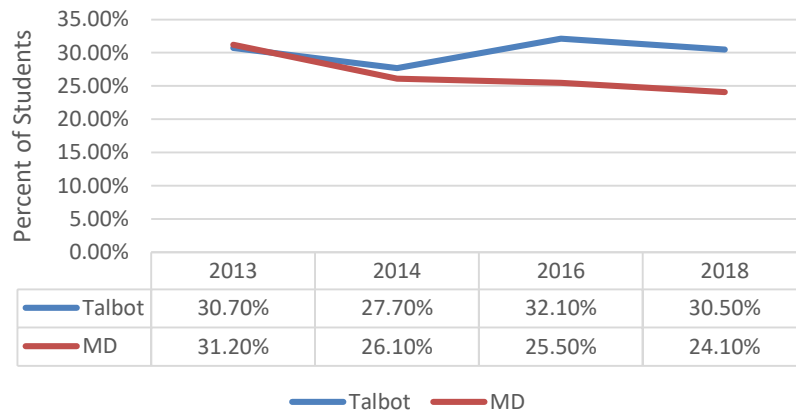
FY18 – Concern

FY19 – Concern

FY20 – Concern

FY21 – Concern

Public School students reporting one or more alcohol drinks in last 30 days



YRBS, QN 26 Middle School
Ever had a drink of alcohol
2013 N= 606 22.3%= 135 students
2014 N= 666 17%= 113 students
2016 N= 533 22.7%=121 students
2018 N= 698 20.4%=142 students

Data Source: YRBS, QN 41

Actual Number

2013 N=770 30.7% = 236 students

2014 N=875 27.7%=242

2016 N=1,026 32.1%=329

2018 N=974 30.5%=297

Data Source: YRBS, QN 52

Actual Number

2013 N=824 8%=66 students

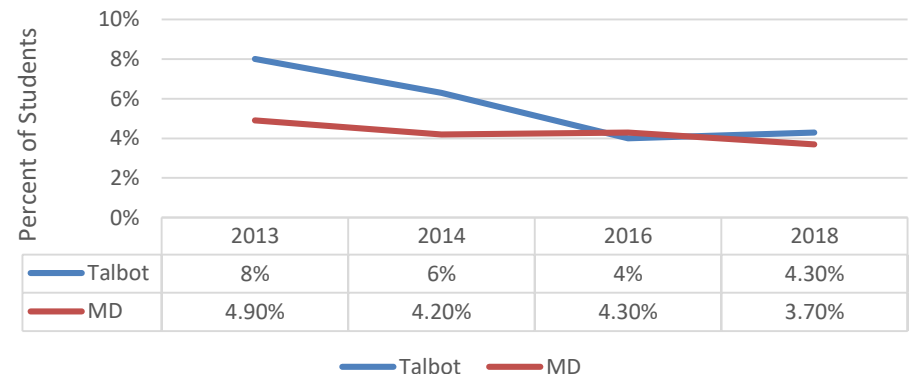
2014 N=929 6.3%=58

2016 N=1,088 4%=44

2018 N=1008 4.3%=43

Students reporting heroin use at least once in
lifetime

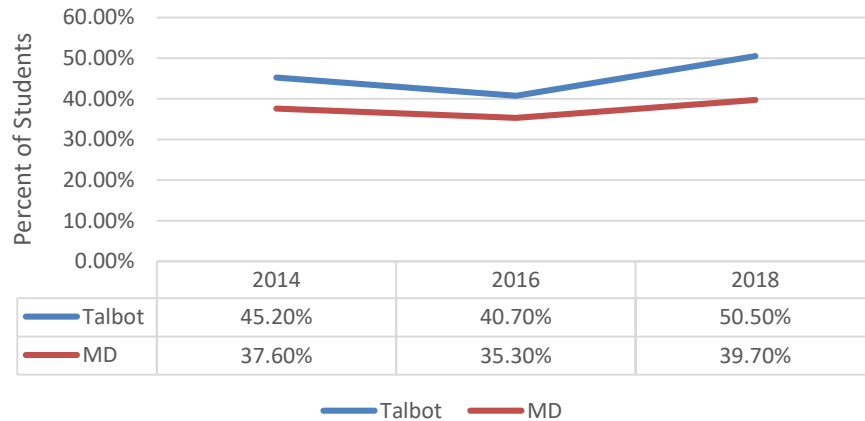
Public 9-12 graders



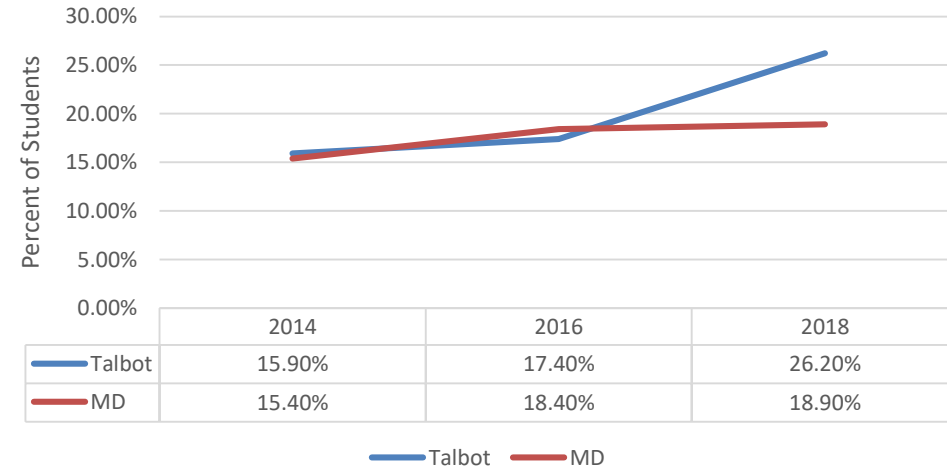
Indicator: Electronic Vaping

New

High School Students reporting Electronic Vapor Product Use, Public School grades 9-12



Middle School Students reportin Electronic Vapor Product Use, Public School Grades 6-8

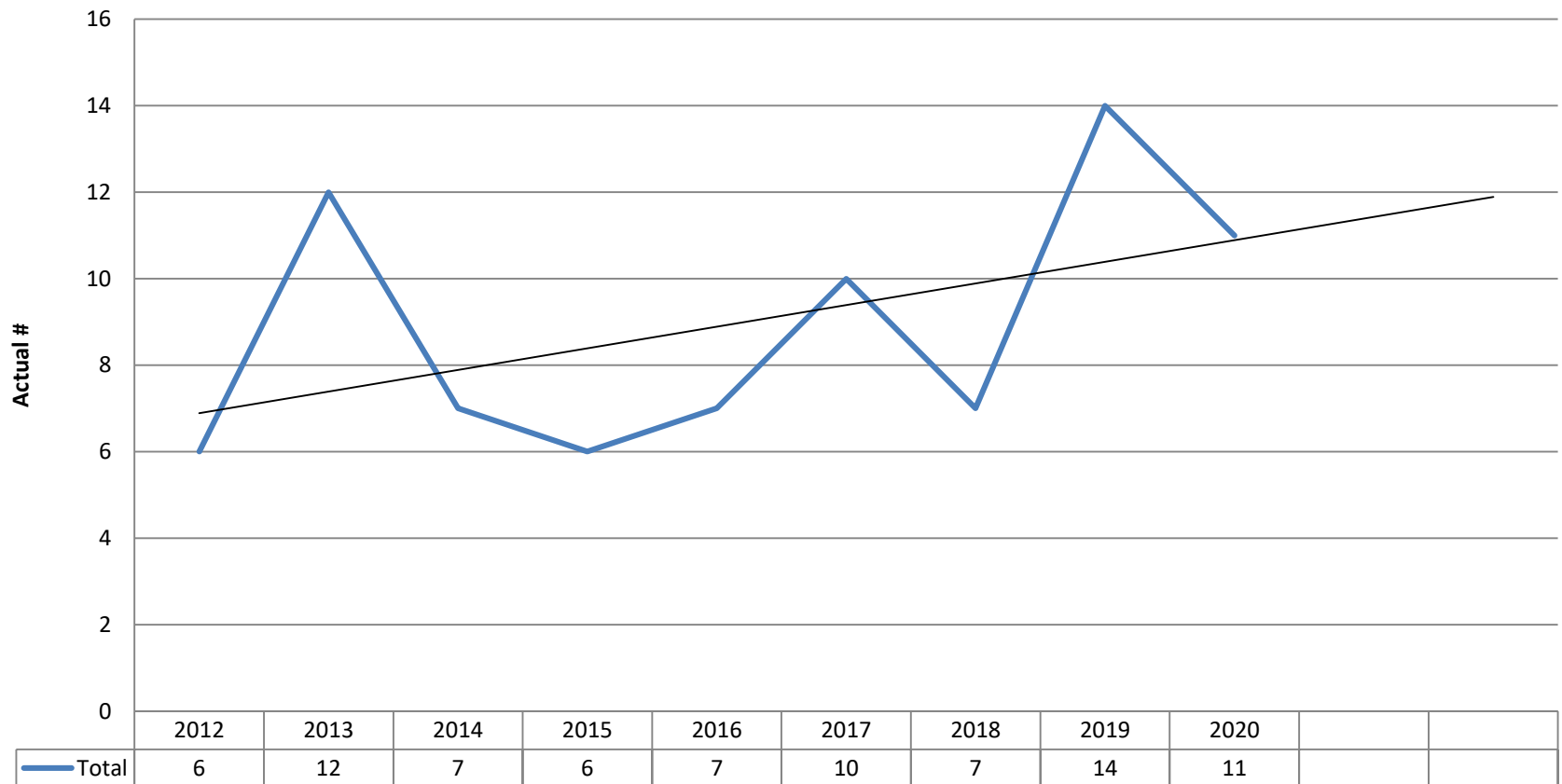


Data Source: YRBS, QN34 High School, QN21 Middle School

Indicator: Juvenile Felony Offenses

FY 13 – Monitor
FY 16 – Positive Progress
FY 17 – Positive Progress
FY 18 – Positive Progress

Juvenile Violent Felony Complaints



Source: DJS Annual Statistical Report, most recent

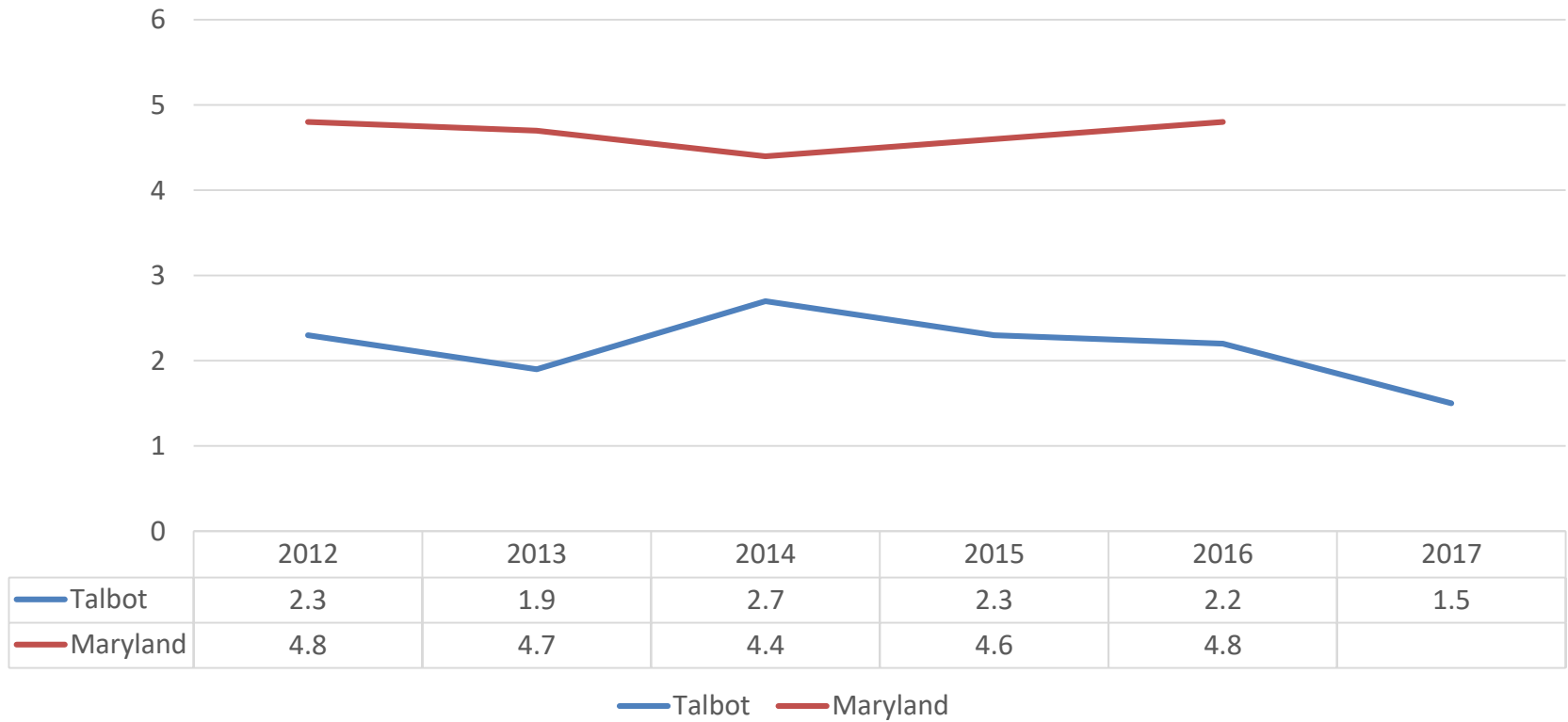
Indicator: Crime

FY 13 – Monitor

FY 16-17 –Positive Progress

FY 18 – Monitor

Violent Crimes
Rate per 1,000 persons

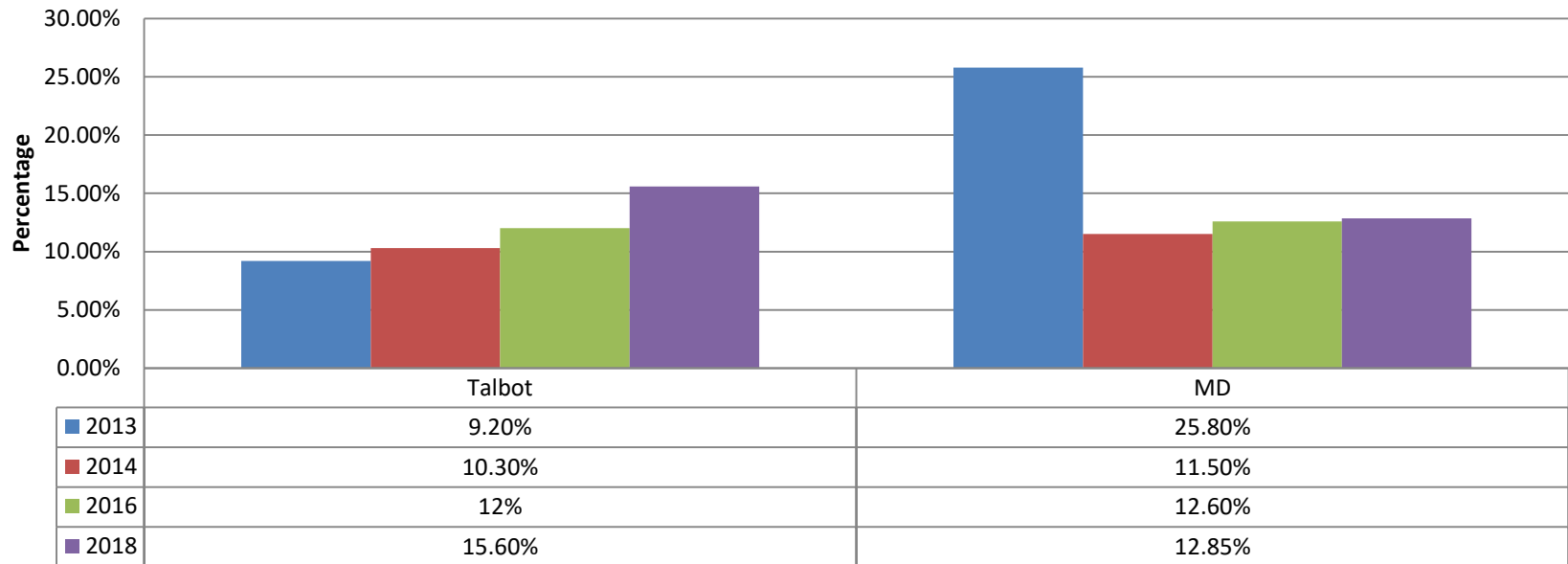


Source: Governor's Office for Crime Control and Prevention. Most recent Talbot 2017, MD 2016

Indicator: Obesity

Childhood Obesity 9-12 graders

FY 13 – Concern
FY 16 – Monitor
FY 17 – Monitor
FY 18 – Monitor



Actual Numbers

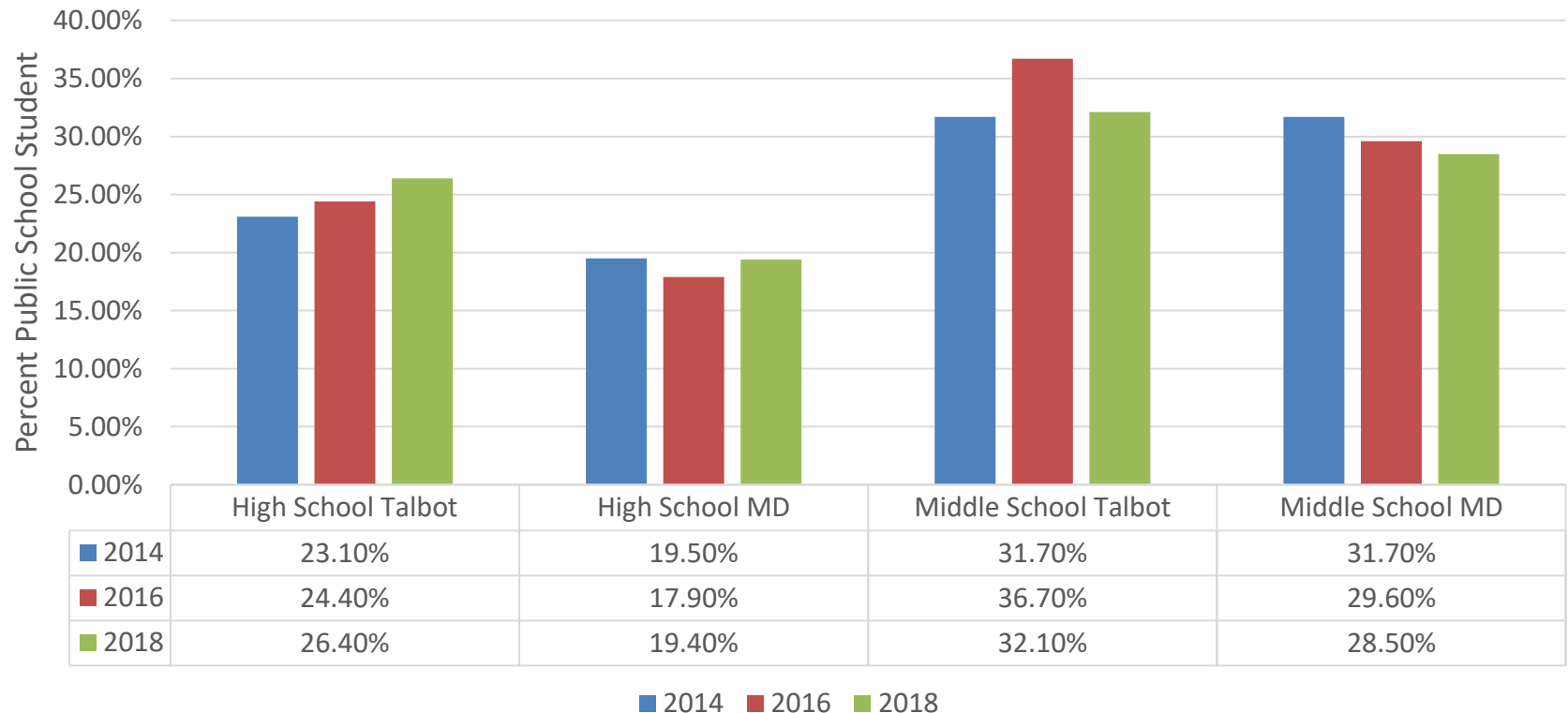
2013 N= 745	9.2%= 69 Students
2014 N= 692	10.3%=90 Students
2016 N=986	12%=118 Students
2018 N=910	15.6%=142 Students

Data Source: YRBS, QNOBESE
Calculated from Self Report of Height and Weight

Physical Activity

New

Physical Activity 60 Minutes in Last 7 days
Percent of Public School Students self report



Source: YRBS – QNPA7DAY

Indicator: Health Insurance Coverage

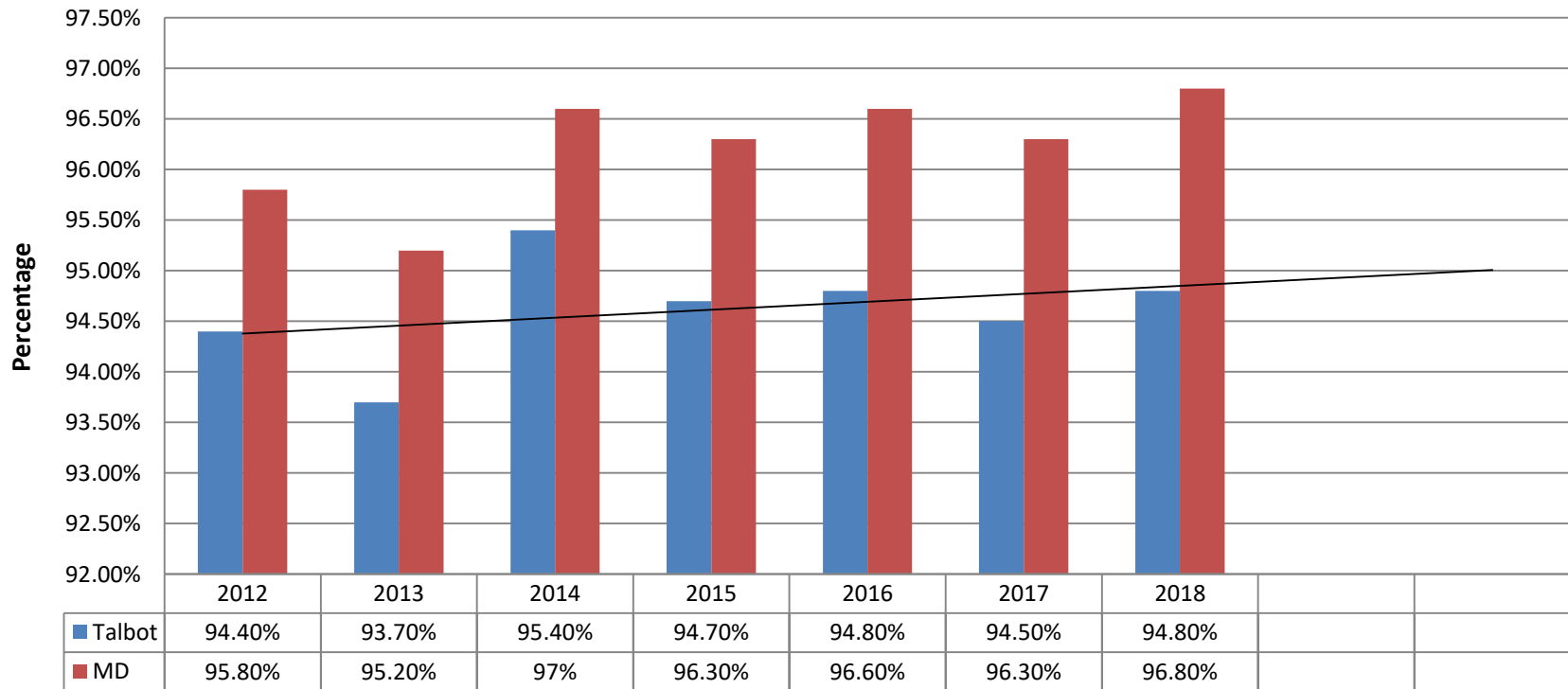
FY 13 – Positive Progress

FY 16 – Positive Progress

FY 17 – Positive Progress

FY 18 – Positive Progress

Health Insurance Children, ages 0 to 18



Data Source: US Census, SAIPE, most recent

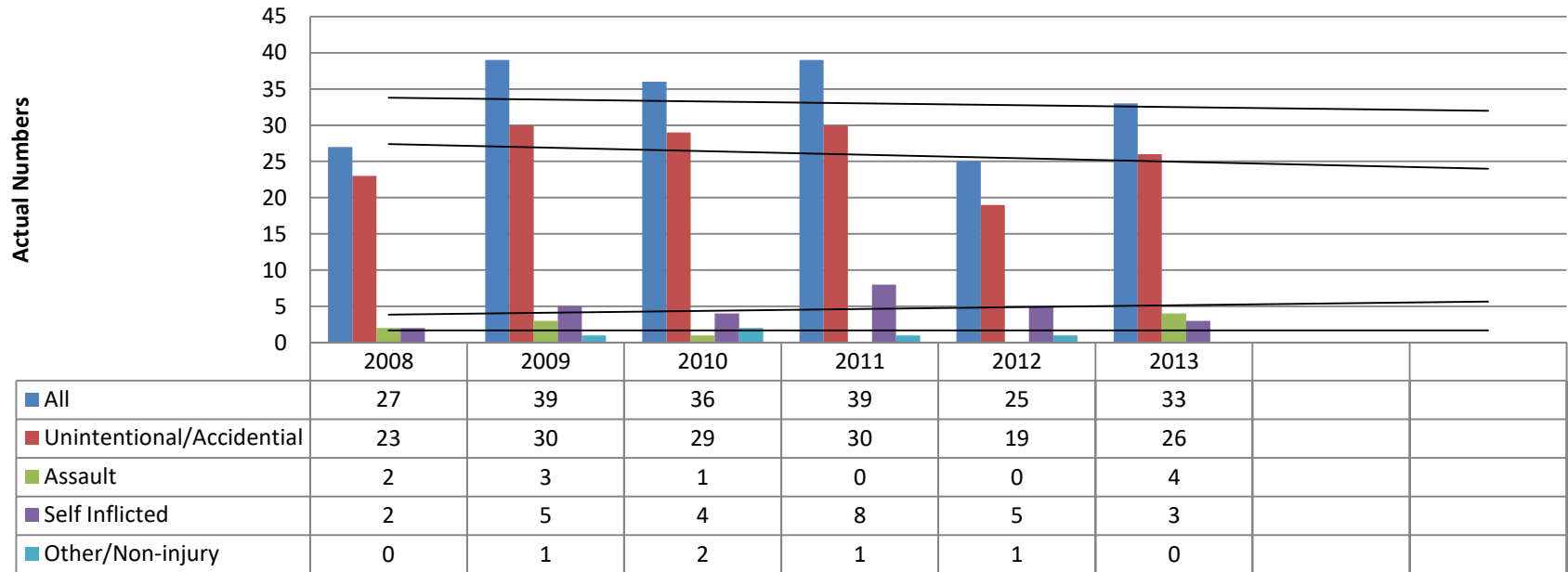
Indicator: Hospitalizations

FY 13 – Positive Progress

FY 16 – Monitor

FY 18 – Monitor

Talbot Youth Hospitalizations Aged 0 -21

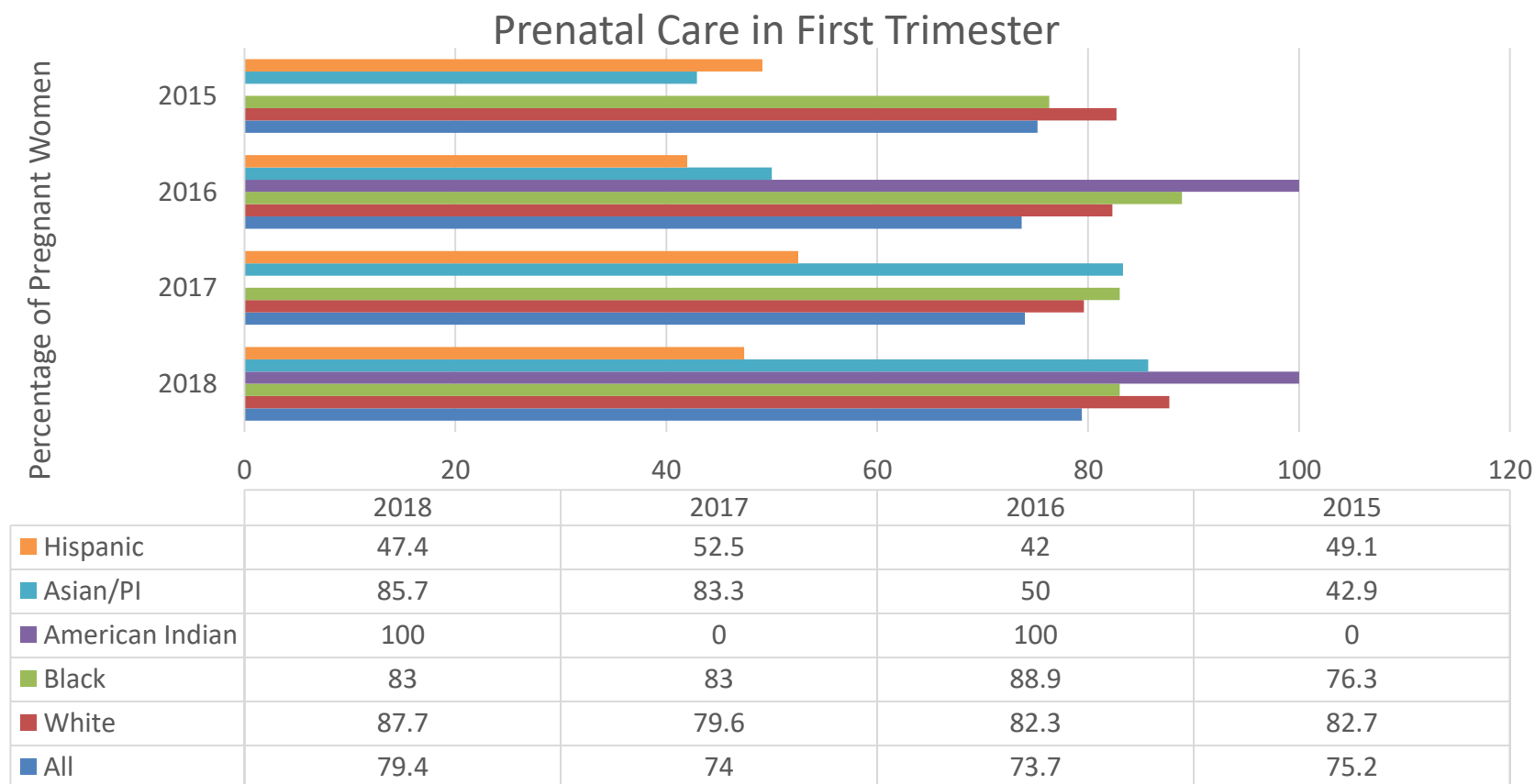


2017 & 2018 – Unable to obtain updated information

Data Sources: MD HSCRC, www.goc.maryland.gov

Data pulled from hospitalization codes

Prenatal Care



Hispanic Asian/PI American Indian Black White All

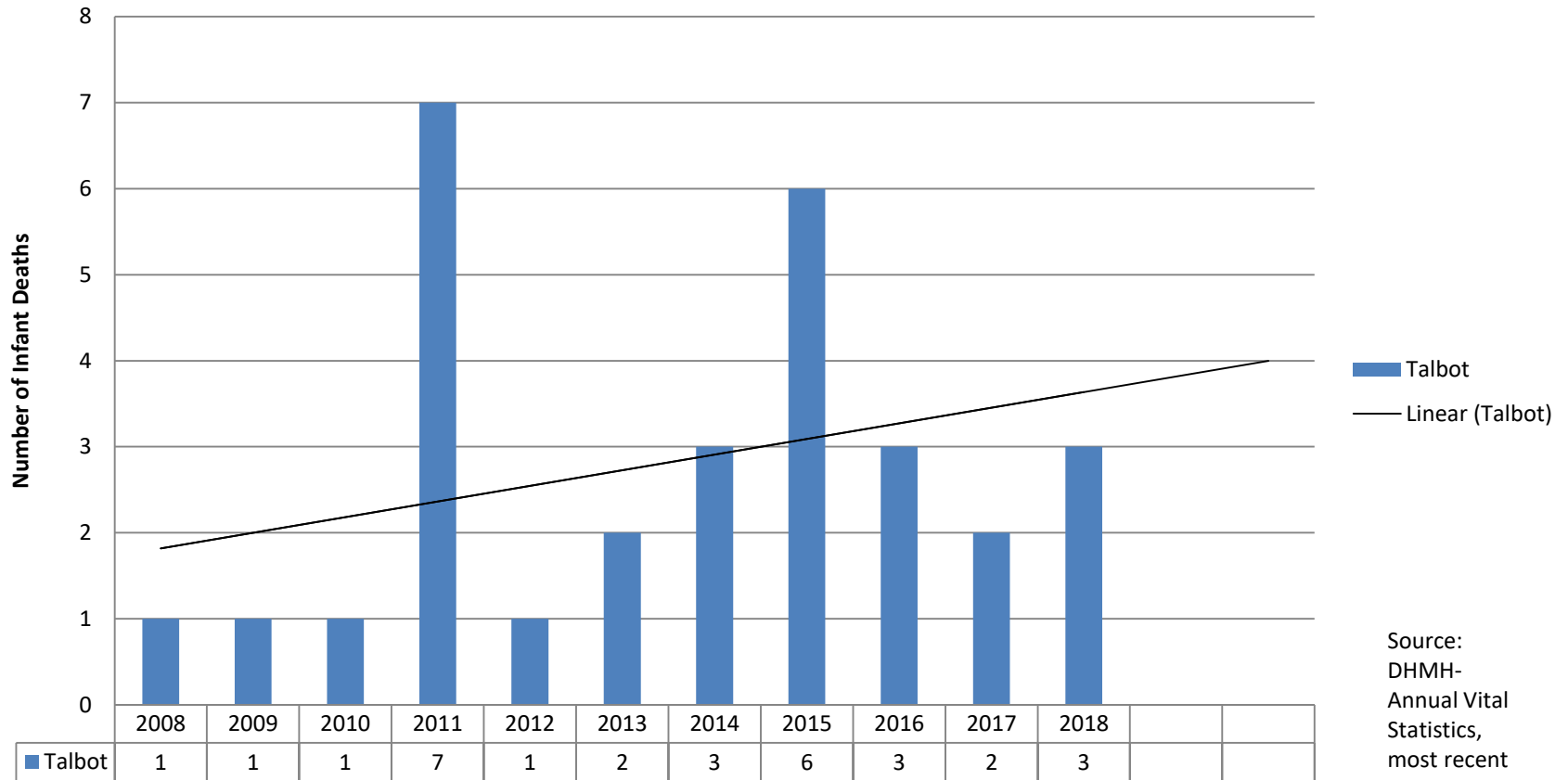
Indicator: Infant Mortality

FY 13 – Positive Progress

FY 16-17 – Monitor

FY 18 - Monitor

Infant Mortality



Indicator: Low Birth Weight

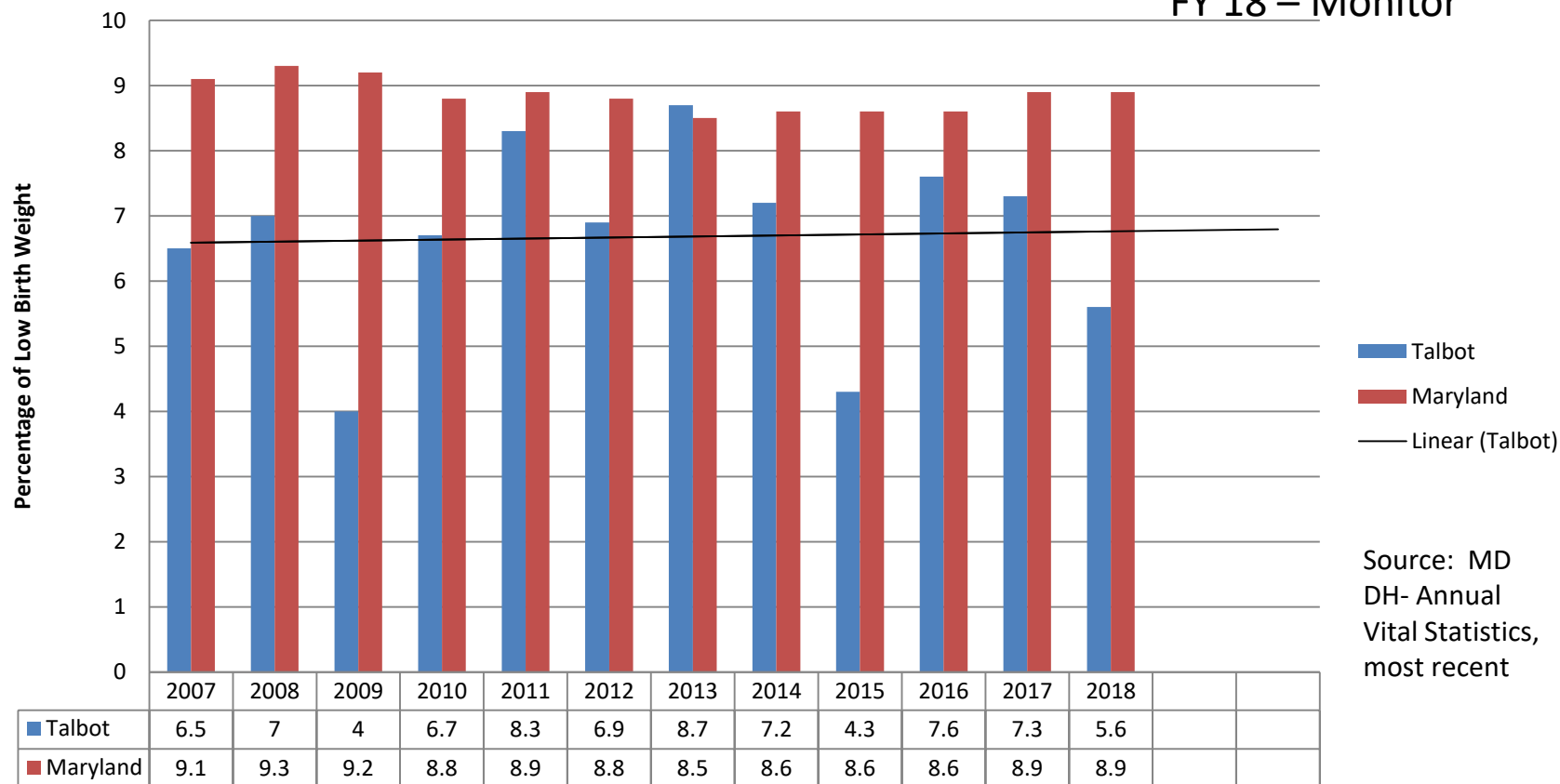
FY 13 – Positive Progress

FY 16 –Positive Progress

FY 17- Positive Progress

FY 18 – Monitor

Low Birth Weight



Source: MD
DH- Annual
Vital Statistics,
most recent

Actual Numbers

FY 13 = 30

FY 14 =24

FY 15 = 14

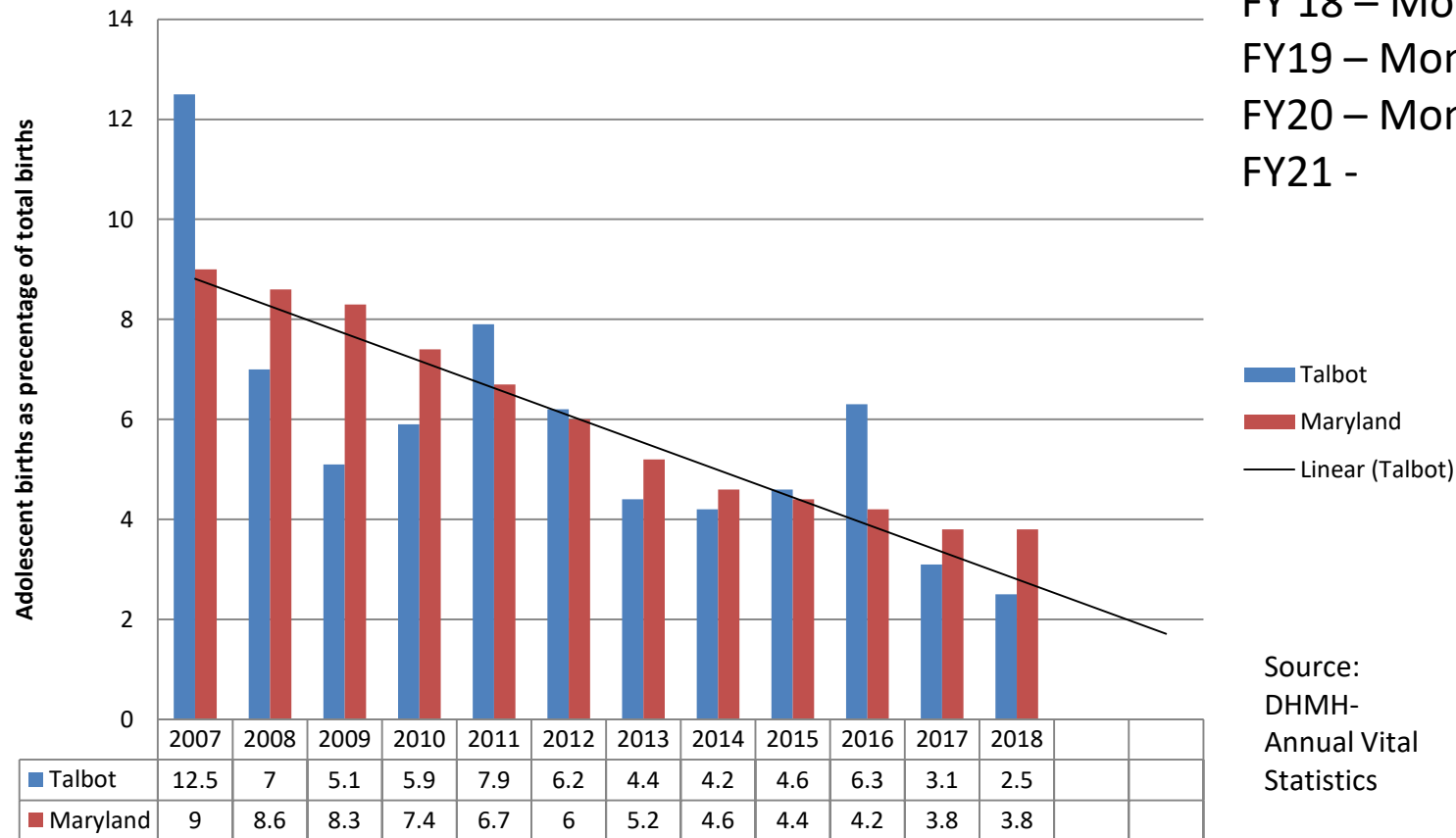
FY 16=25

FY17=26

FY18=18

Indicator: Births to Adolescents

Births to Adolescents (Ages 10-19)



FY13 – Monitor
 FY16 – Positive Progress
 FY 18 – Monitor
 FY19 – Monitor
 FY20 – Monitor
 FY21 -

Source:
 DHMH-
 Annual Vital
 Statistics

Source: MD Department of Health Annual Vital Statistics 2018, most recent 2018

Talbot Births to Adolescents				
Actual Numbers				
Year	<age 15	Age 15-17	Age 18-19	Total
FY 12	1	5	14	20
FY 13	0	6	9	15
FY 14	0	2	12	14
FY 15	1	6	8	15
FY 16	0	7	14	21
FY 17	1	2	8	11
FY 18	0	2	6	8

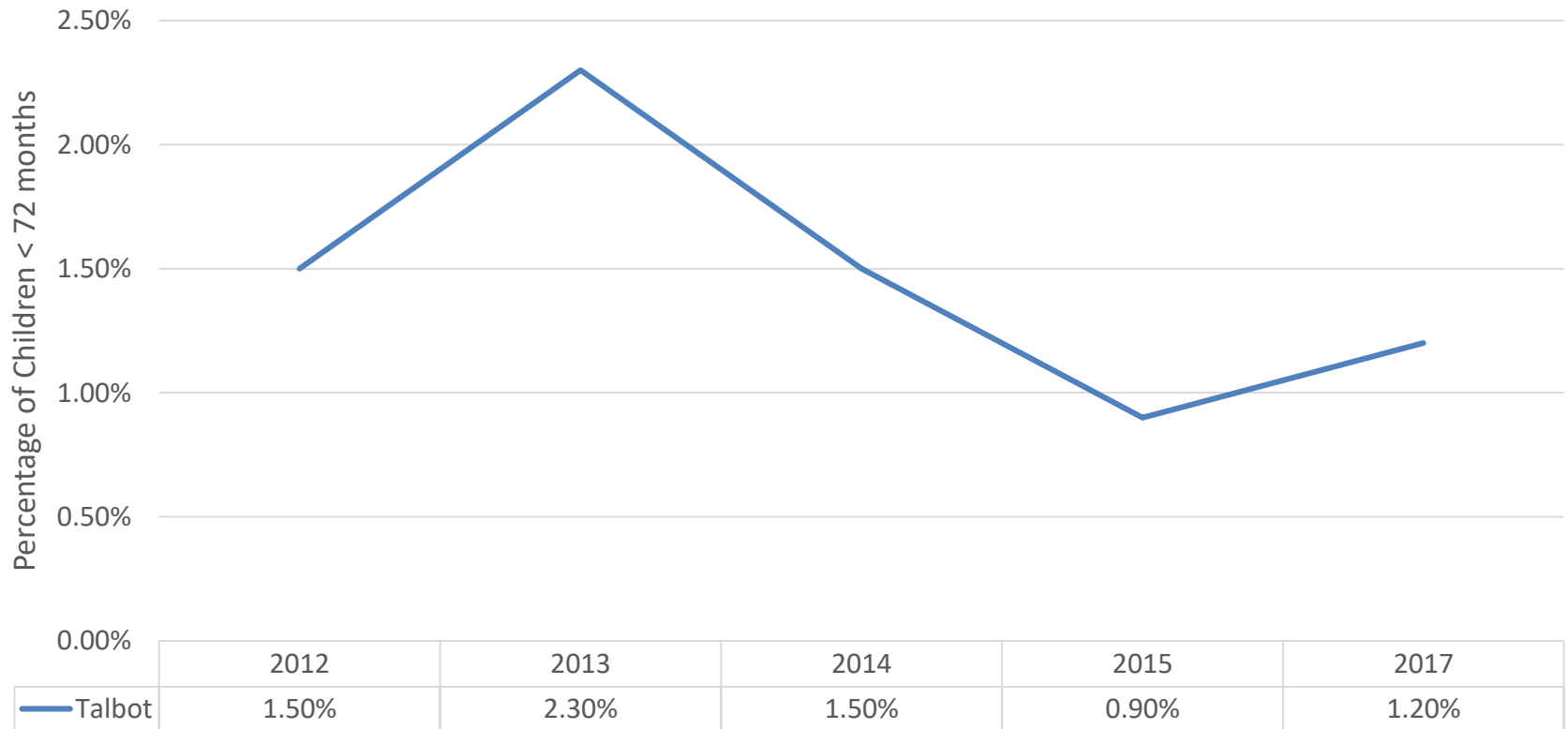
FY 17 – Births by race of mother – 54.5% White, 36.4% Black, 36.4% Hispanic

FY 18 – Births by race of mother – 87.5% White, 12.5% Black, 62.5% Hispanic

Lead Exposure

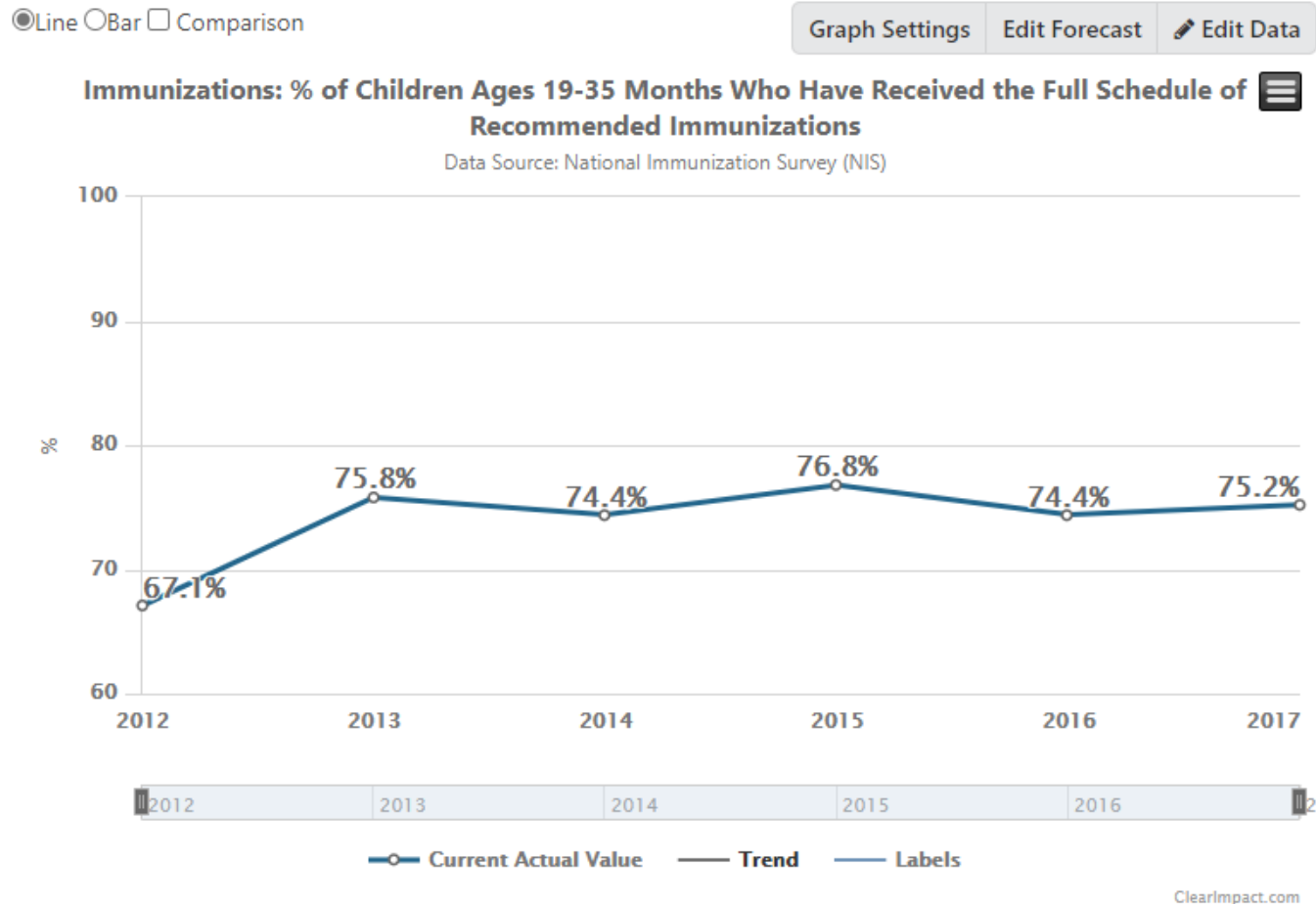
New

Children <72 months with confirmed Lead Exposure
(Blood Lead Levels 5 micrograms/dl)



Indicator: Immunizations

FY 13 – Positive Progress
FY 16 –Positive Progress
FY 17- Positive Progress
FY 18 – Monitor
GOC is working on data development. Data not available on county level.



Source: National Immunization Survey

FY21 Data Review Results

CONCERN FY21	MONITOR FY21
Child Poverty	Youth Unemployment
Hunger / Childhood Food Insecurity	High School Dropout Rate
Mental Health	Kindergarten Readiness Assessment
Children of Incarcerated Parents	Out of Home Placement
Homelessness	
Academic Achievement (racial disparities)	
Child Maltreatment	
Substance Use	
Electronic Vaping	