

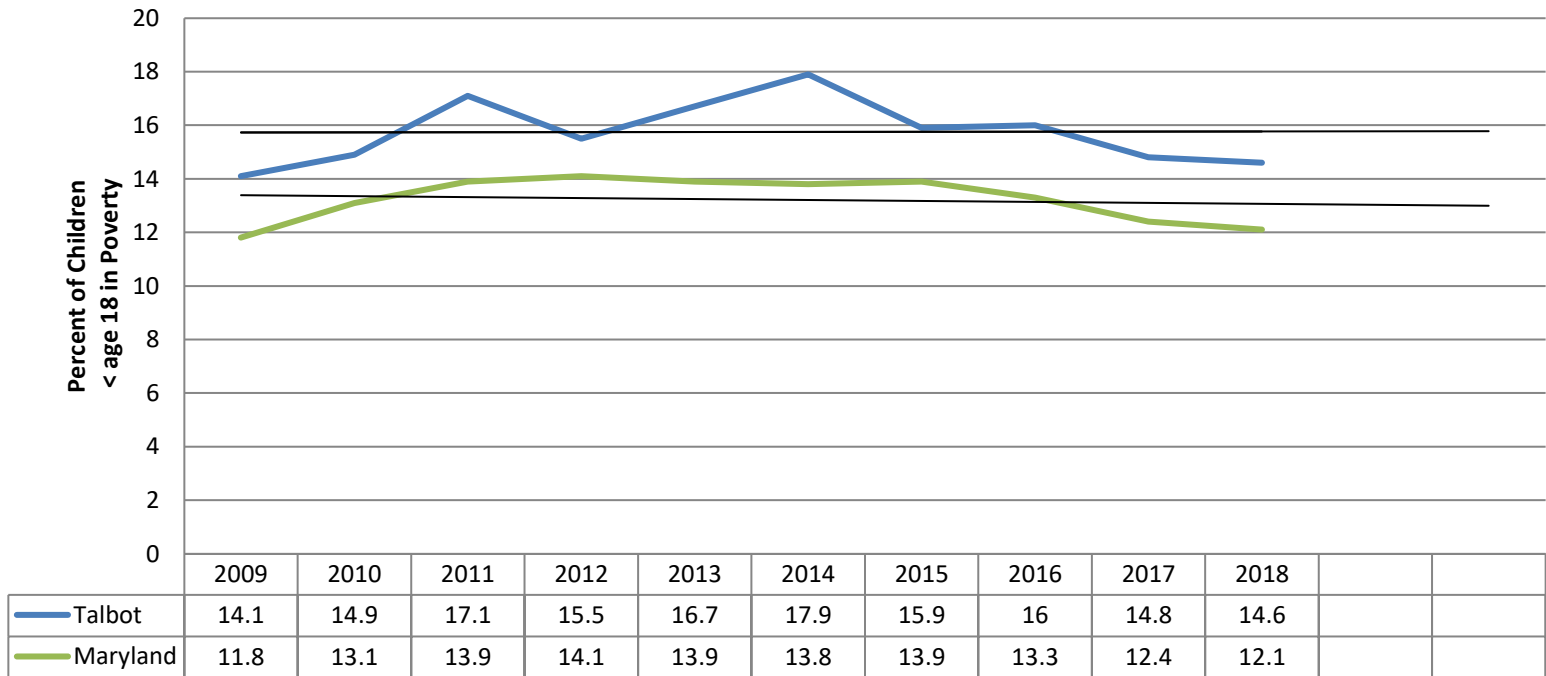
Talbot County Results and Indicator Data FY 20

Compiled by the
Talbot Family Network

Child Poverty

FY 13 – Monitor
 FY 16 – Monitor
 FY 17 – Monitor
 FY 18 – Concern
 FY19 – Concern
 FY20- Concern

Child Poverty



Source: US Census Bureau, Small Area Income and Poverty, 2018 Estimates

Indicator: Child Poverty

Poverty	'13	2014		2015		2016		2017		2018	
		Tal	MD	Tal	MD	Tal	MD	Tal	MD	Tal	MD
All Ages	4074 10.9%	4333 11.7 %	10.4 %	3857 10.4%	9.9%	3827 10.4%	9.7%	3347 9.1%	9.4%	3377 9.2%	9.1%
< age 18	1173 16.7%	1238 17.9 %	13.8 %	1093 15.9%	13.9 %	16%	13%	994 14.8%	12.4%	967 14.6%	12.1%
Families with children age 5-17	790 15%	820 15.8 %	13.2 %	759 14.8%	12.8 %	768 14.9%	12.2%	708 14.1%	11.6%	673 13.7%	11.6%

Talbot Poverty Data	2015	2016	2017	2018
Child Poverty**	15.9%	16%	14.8%	14.6%
Poverty – White, all ages*	9.4%	8.8%	8.2%	7.8%
Poverty – Black, all ages*	21%	23%	20.8%	20.6%
Poverty – Two of More races, all ages*	22.4%	26.4%	26.1%	15%
Poverty – Latino, all ages*	25.2%	29.2%	27.6%	27.1%

* US Census Bureau, American Community Survey, 5 year Estimate **US Census, SAIPE 2018

Individuals Below Poverty Level by Race/Ethnicity	Talbot			Maryland		
	2015	2016	2017	2015	2016	2017
Black	21%	23%	20.8%	15%	14.7%	14.1%
Two or More Races	22.4%	26.4%	26.1%	12.6%	12.0%	12.2%
Hispanic or Latino of Any Race	25.2%	29.2%	27.6%	14.1%	14.0%	13.8%
White	8.4%	8.8%	8.2%	7.1%	7.2%	7.1%

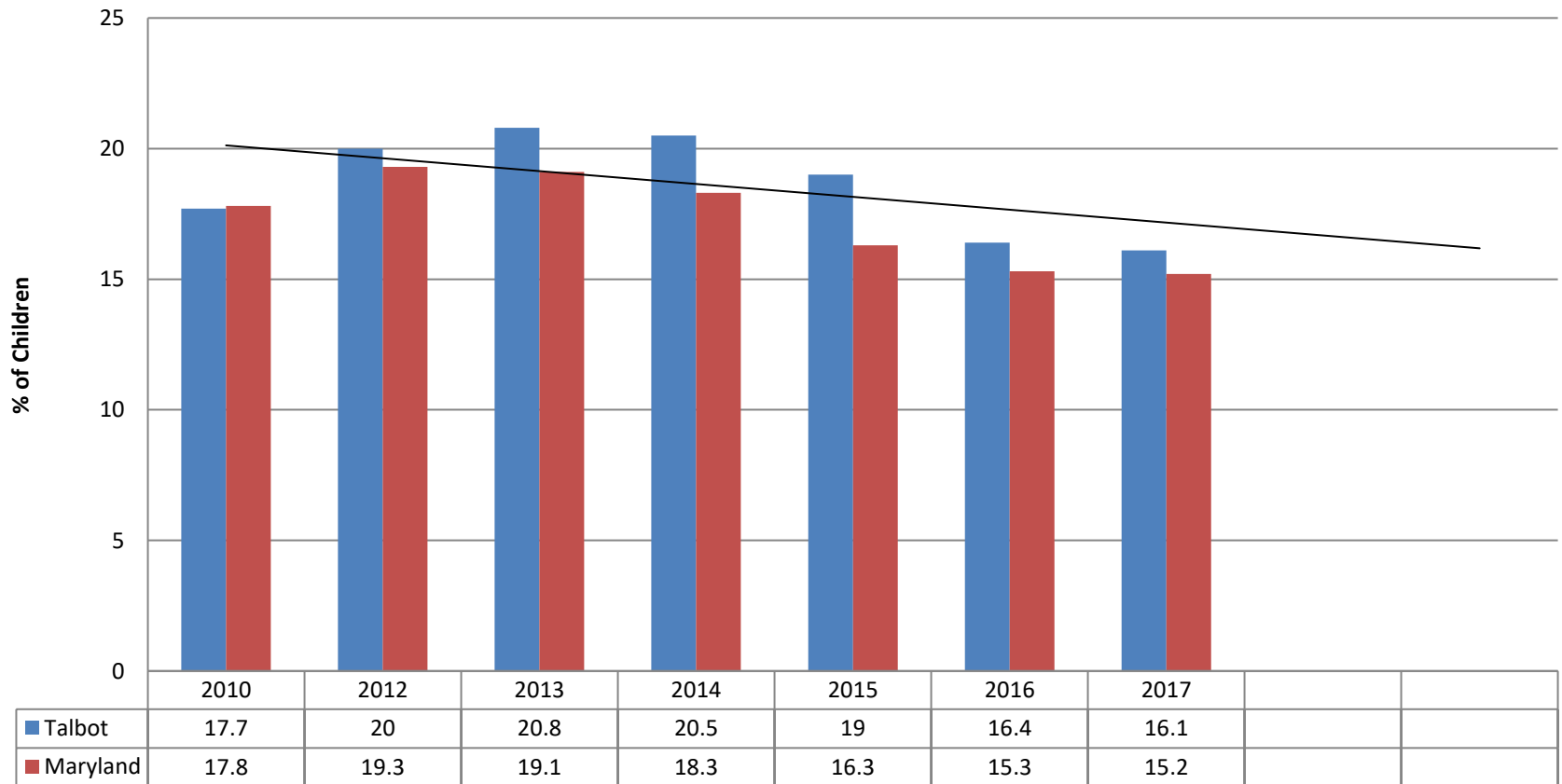
Source: US Census Bureau, ACS, 5 year Estimates

481 Households below poverty/11,300 Total Households
 4.3% of Talbot County Households are below the poverty level.

Indicator: Hunger

FY 13 – Concern
 FY 16 – Concern
 FY 17 – Concern
 FY 18 – Concern
 FY19 – Concern
 FY20 - Concern

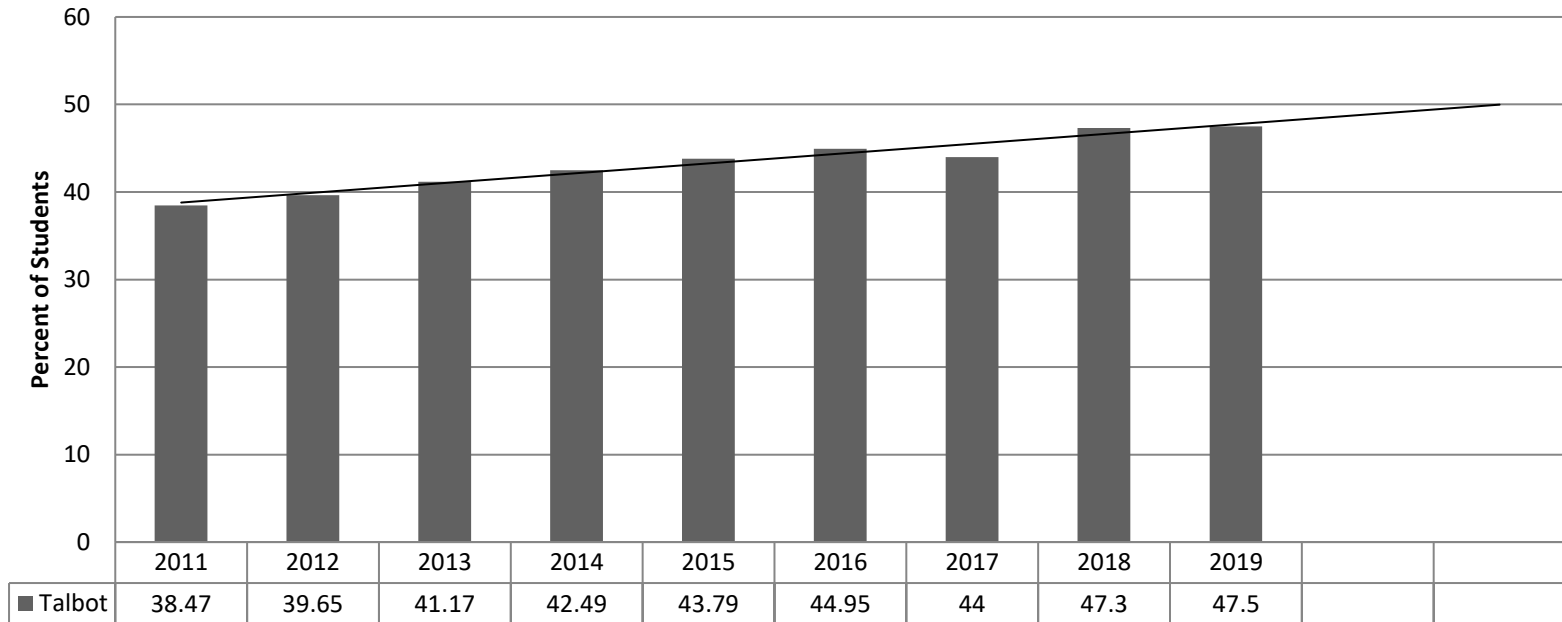
Child Food Insecurity



Source: Feeding America

Map the Meal Gap 2017 = most recent

Free and Reduced Meals Talbot County Public Schools



Source: MSDE

FY 14 = 1,931 students FY 15 = 2,038 FY 16= 2,074 FY 17=2,135 FY18=2,098
 FY19= 2,248

Free Meals = 100% or less of Federal Poverty Guidelines
 Reduced Meals = 100-185% of Federal Poverty Guidelines

Hunger and Race

Race	Race as % of School System Population	Students receiving FaRMs
White	56.78%	25.1% (666/2,654)
Black	15.85%	76.5% (567/741)
Hispanic	19.55%	87% (795/914)
Two or more	5.76%	52.8% (142/269)

FARMS by School

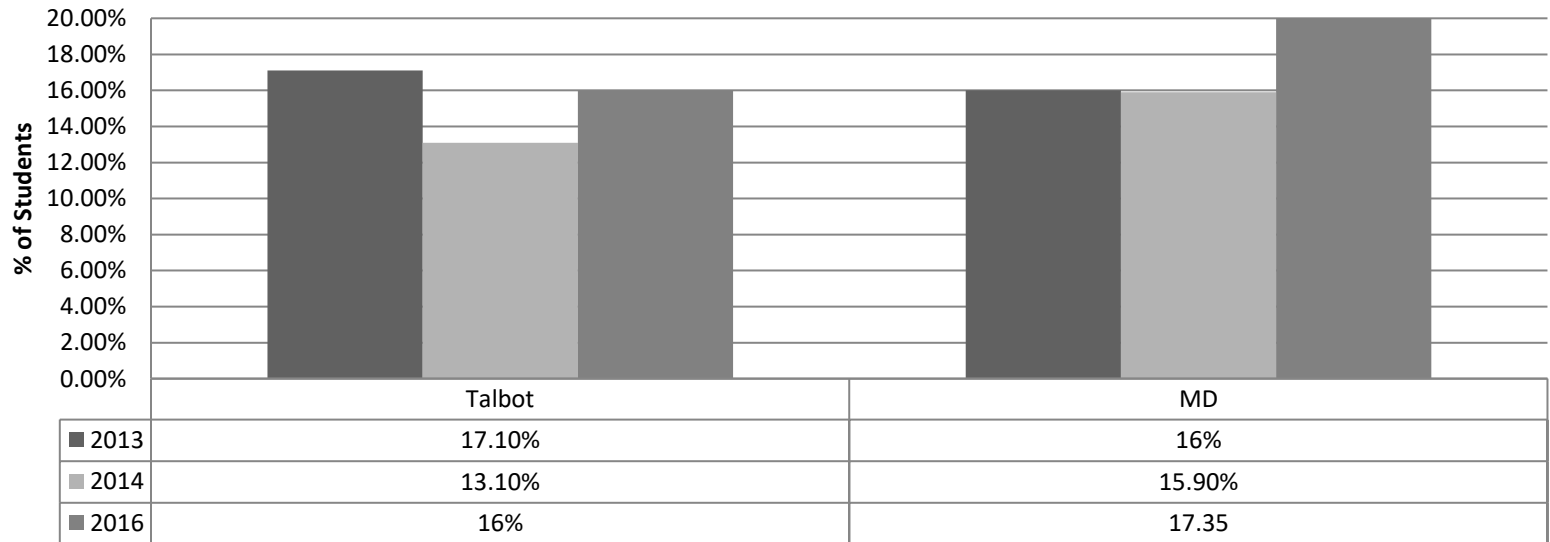
School	FaRMs	School Enrollment	FaRMs %
Chapel Elem	121	383	31.7%
Easton Elem	739	1,064	69%
Easton High	477	1,196	39.9%
Easton Middle	385	827	46.5%
St. Michaels Elem	132	298	44.4%
St. Michaels Middle/High	132	420	31.5%
Tilghman Elem	39%	103	37.4%
White Marsh Elem	193	383	50.3%

TCPS, 1/20

Indicator: Mental Health

FY 13 – Concern
 FY 16 – Concern
 FY 17 – Concern
 FY 18 – Concern
 FY19 – Concern
 FY20 - Concern

Students who seriously considered attempting suicide during past 12 months, Public 9-12 graders



Data Source: YRBS, QN27 Actual
 2013 N=830 17.1% = 142
 2014 N= 955 13.1%=125

YRBS Middle School, QN 15 Actual
 2013 N=652 17.2% = 112
 2014 N=706 13.3% = 94

% of Talbot High School Students, by sub group, that report Suicidal Ideation	2013	2014	2016
White	14.3%	11.7%	15.9%
Black	12.9%	12.1%	12.95
Hispanic	8.9%	18.4%	20.5%
LGBTQ	47.5%	37%	45.2%

Source: Youth Risk Behavior Survey, Maryland, Talbot County

2016 is most recent data

Impact of Incarceration on Children and Families

- 162 Talbot residences are currently incarcerated in MD State Prisons According to (July 2016 MD Department of Public Safety and Correctional Services)
- 384 Talbot Residences on Parole or Probation. (July 2016 MD Department of Public Safety and Correctional Services)
- The current total census at Talbot County Department of Corrections is 65 (2020).
- Nationally 52% of inmates (51% of men and 62% of women) are parents. (BJS)
- In FY 14 and FY 15, 7%, 2 and 1 respectively, TCDSS Family Preservation/Consolidated Services cases involved an incarcerated parent.

Talbot County Detention Center

	Total Population with TCDC	Percent	Total Talbot Population
Male	55	84.6%	47.4%
Female	10	15.4%	52.6%
White	32 Male 9 Female	49.2% 13.8%	82.8%
Black/AA	23 Male 0 Female	35.4%	11%
Hispanic	10 Male 1 Female	15.4% 0.015%	6.5%
Total	65		

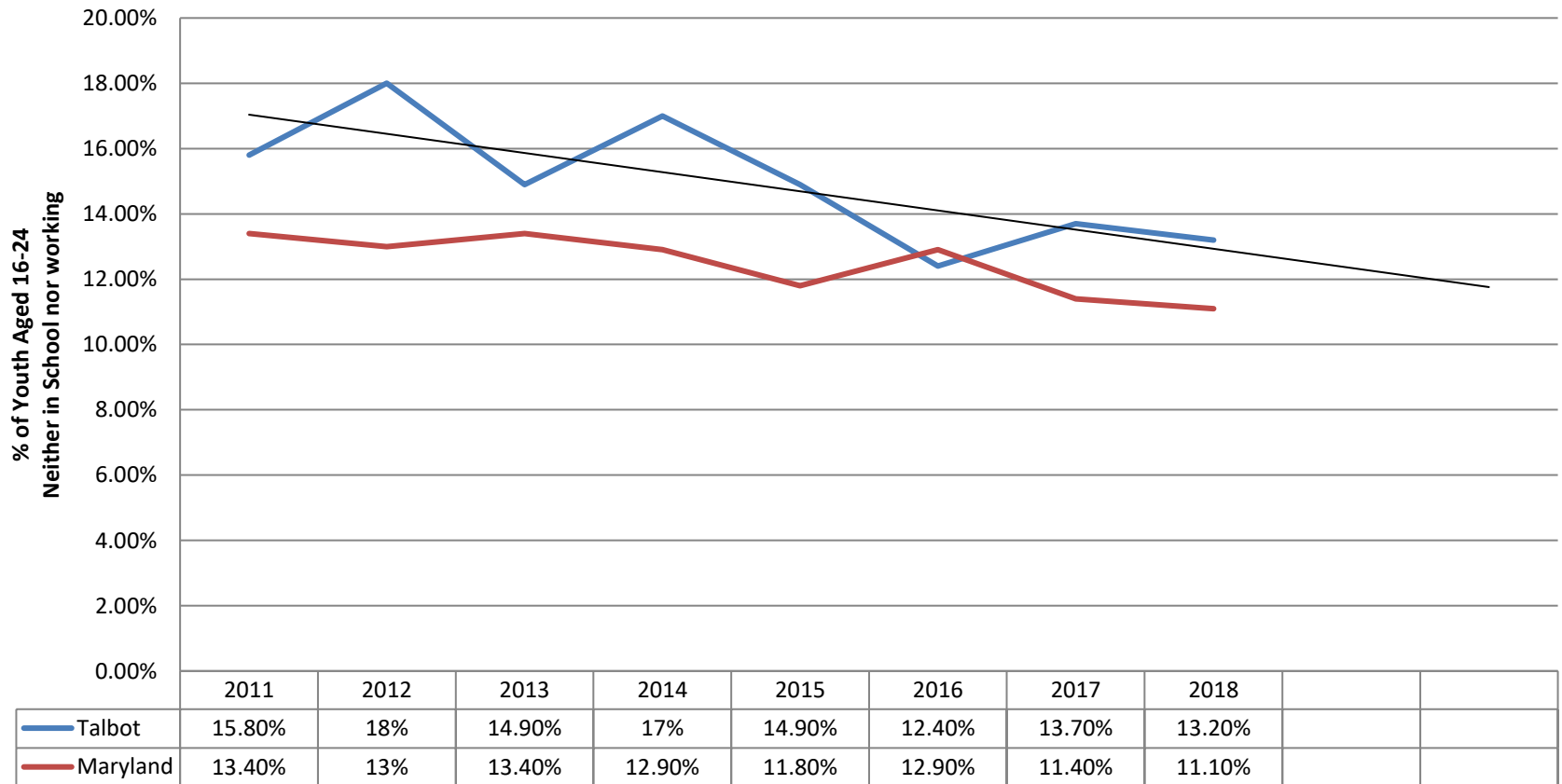
Sources: Talbot County Detention Center and US Census, ACS, 5 yr Estimate, 2018

Disconnect Youth

Age 16-24 Neither in school nor working

FY 17 – Concern
 FY 18 – Concern
 FY19 – Concern
 FY20

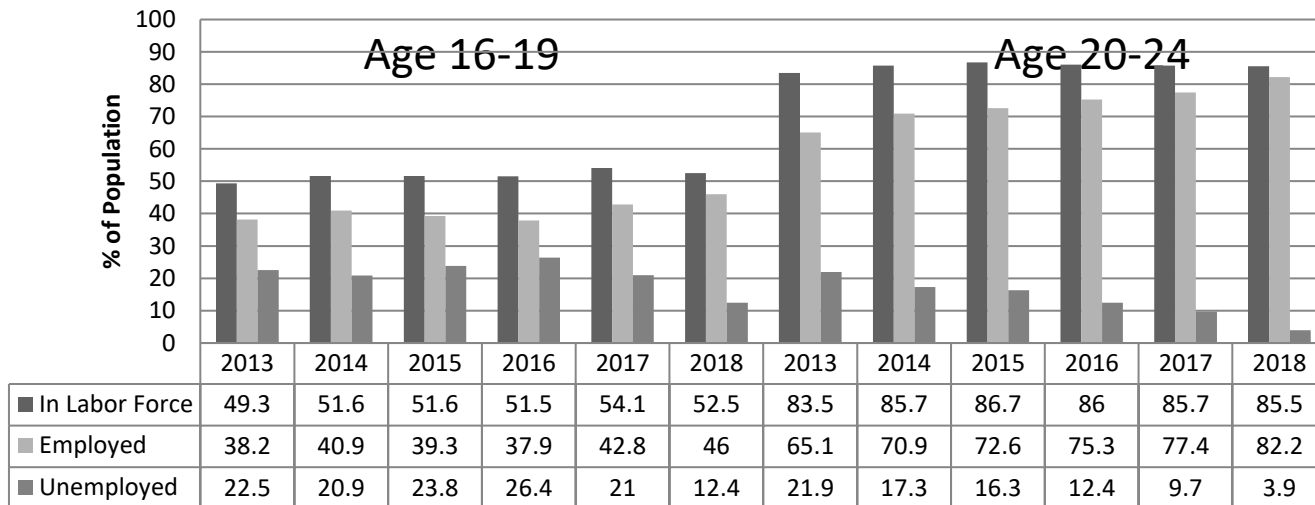
Disconnected Youth



Youth Employment

FY 17 – Monitor
 FY 18 – Monitor
 FY19- Monitor
 FY20 - Monitor

Talbot Youth Employment Youth (16-24) Employment Status



Source: US Census Bureau, ACS, 5 year Estimates, 2012-2018

Youth Population	2013	2014	2015	2016	2017	2018
16-19	1,745	1,615	1,570	1,548	1,550	1,456
20-24	1,747	1,853	1,814	1,795	1,705	1,609

Source: US Census, ACS, 5 yr Estimate, Employment

Youth Employment

	2015		2016		2017		2018	
16-19	Talb	MD	Talb	MD	Talb	MD	Talb	MD
In Labor Force	52%	38%	52%	38%	54%	38%	52.5%	37.9%
Employed	39%	29%	38%	29%	43%	30%	46%	30.2%
Unemployed	24%	23%	26%	21%	21%	20%	12.4%	18.5%
20-24	Talb	MD	Talb	MD	Talb	MD	Talb	MD
In Labor Force	87%	75%	86%	75%	86%	75%	85.5%	75.2%
Employed	73%	63%	75%	64%	77%	65%	82.2%	65%
Unemployed	16%	14%	12%	13%	10%	12%	3.9%	11.3%

Source: US Census, ACS, 5 yr Estimate, Employment, 2018

Race (All ages in workforce) Talbot	Unemployment rate			
	2015	2016	2017	2018
White	6.1%	5.5%	3.8%	2.8%
Black	8%	9.1%	7.1%	4.6%
Two or More races	19.1%	9.3%	18%	12.1%
Latino	6.4%	1.0%	.9%	1.1%
Other	8.2%	8.4%	4.3%	3.8%

Source: US Census Bureau, ACS, 5 yr Estimates, Employment

Talbot County Census data from **2018** shows **12.8%** of individuals employed part-time lived below the poverty level, while only **2.6%** of individuals employed full-time were considered below poverty level. This trend is reflected across the country. (US Census, ACS **2018**, 5 year estimates)

Indicator: High School Dropout Rate

FY 16 – Positive Progress

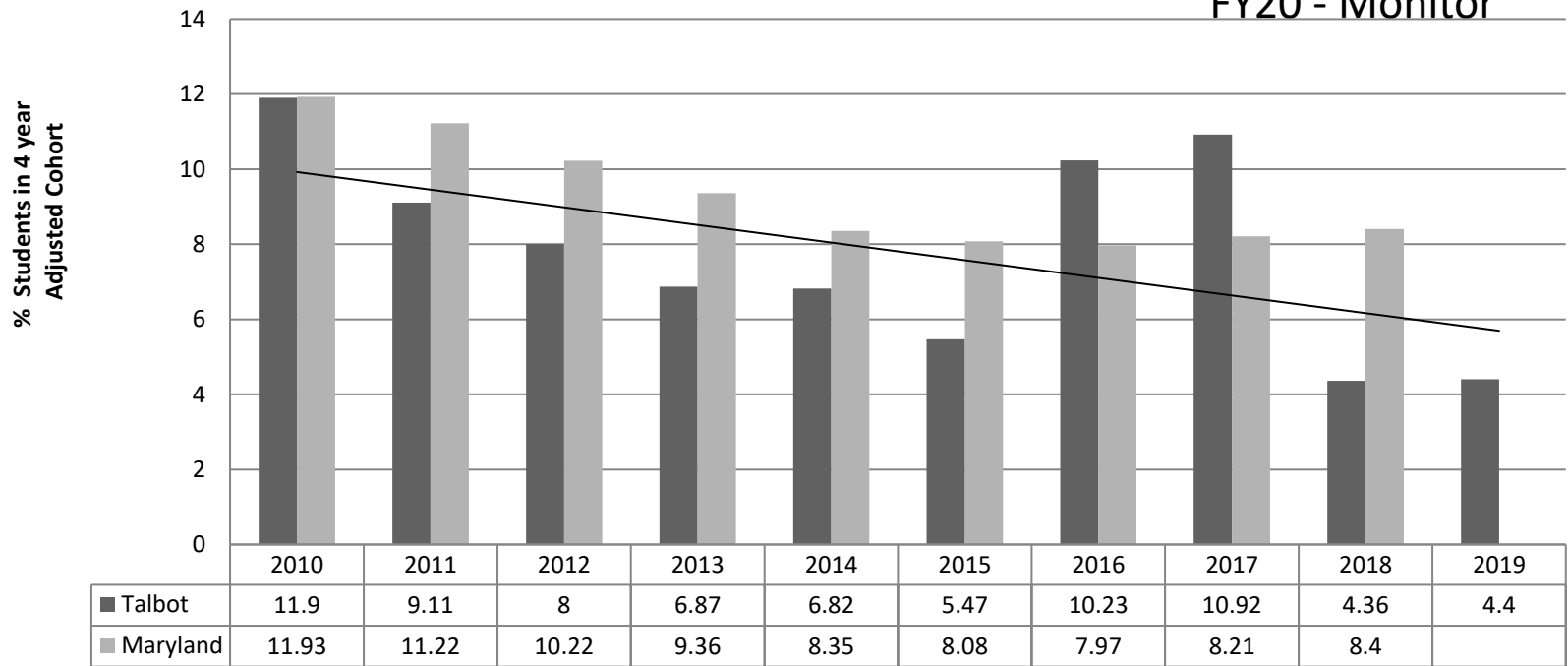
FY 17 – Concern

FY 18 – Concern

FY19 – Monitor

FY20 - Monitor

High School Drop Out Rate



Source: TCPS, 1/20 – Maryland rate not released yet

High School Drop Out Data

Graduation Year	# of Dropouts	# Students in Class/Cohort	Dropout Rate
2013	25	364	6.87%
2014	24	352	6.82%
2015	17	311	5.47%
2016	36	352	10.23%
2017	39	357	10.92%
2018	16	344	4.65%
2019	15	341	4.4%

Source: MSDE. 2019 Unofficial data provided by TCPS

High School Dropout Rate

Talbot Dropout Data by Subgroup						
Subgroup	FY 14	FY 15	FY 16	FY 17	FY18	FY19
Hispanic/ Latino	8% (2)	14.29% (3)	29.03% (9)	35.09% (20)	10.87% (5)	20.7% (12)
Limited English Proficient	100% (2)		70% (7)	63.33% (19)	45.455% (5)	35.3% (12)
FARMS	12.28% (14) 58% of all dropouts	9.68% (9) 53% of all dropouts	17.36% (21) 58% of all dropouts	19.38% (25) 64% of all dropouts	8.929% (10) 67% of all dropouts	9.2% (12) 80% of all dropouts
Male FARMS	14.55% (8)	12.77% (6)	24.59% (15)	28.36% (19)	10.398% (7)	11% (8)
Female FARMS	10.17% (6)	6.52% (3)	10% (6)	9.68% (6)	6.25% (3)	6.9% (4)

Graduation Rates 2018

	2019	2018	2017	2016	2015
Talbot County	93.9%	93.9%	87.11%	85.51%	93.25%
Black	94.7%	84.91%	87.23%	78.85%	93.48%
Hispanic/Latino	75.9%	84.78%	61.40%	64.52%	80.95%
White	97.6%	>95%	92.95%	89.68%	95.02%
Special Education	81%	81.82%	69.57%	60%	80.95%
FARMS	87%	88.39%	77.52%	74.38%	88.17%

Source: Talbot County Public Schools, Unofficial 2019, 2/20

Indicator: Truancy

FY 13 – Positive Progress
 FY 16 – Positive Progress
 FY 17- Positive Progress
 FY 18 - Positive Progress
 FY19- Positive Progress
 FY20 – Monitor HS

Attendance Rate
 Talbot County Public Schools

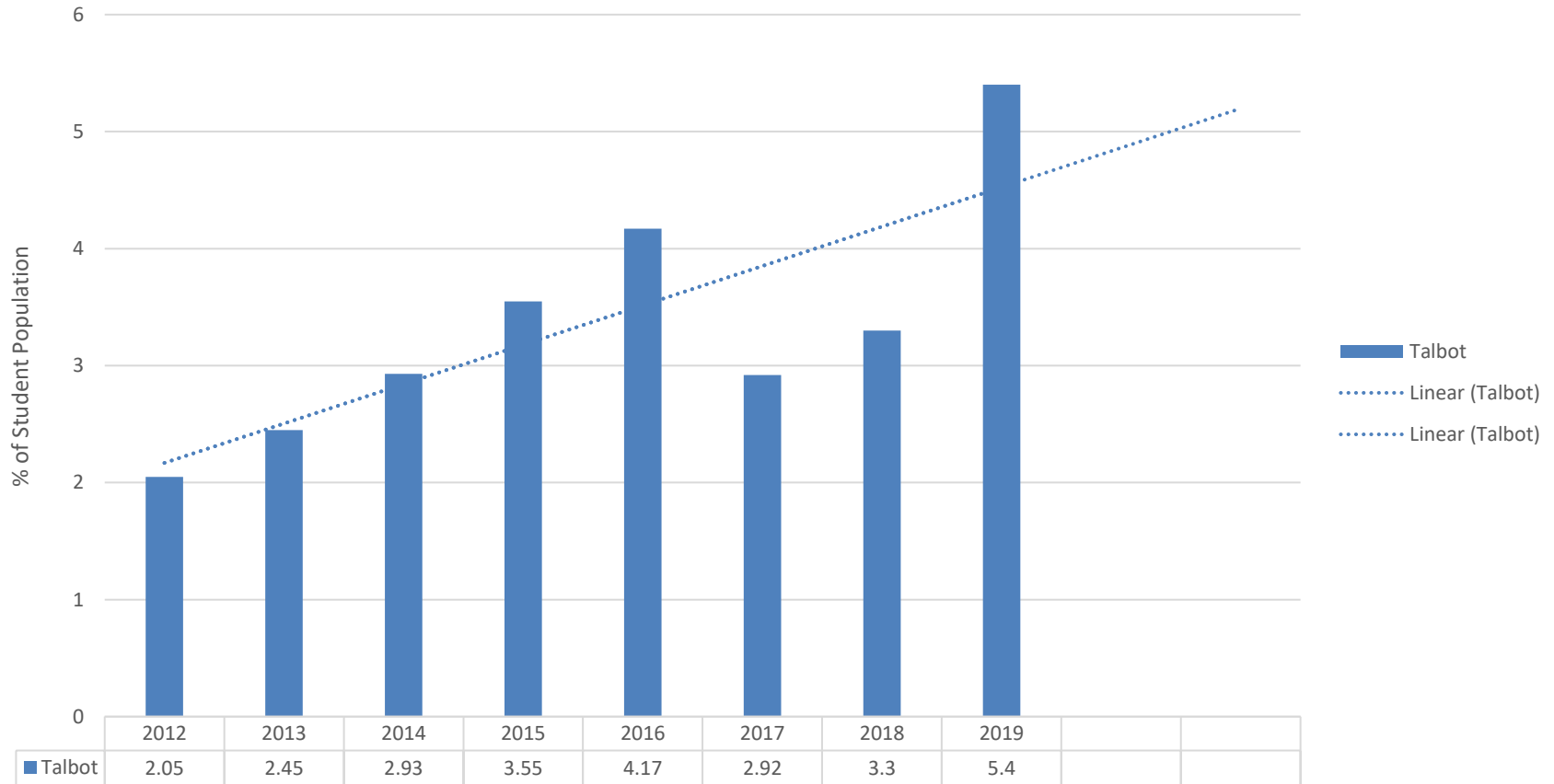


Source: TCPS, 1/20

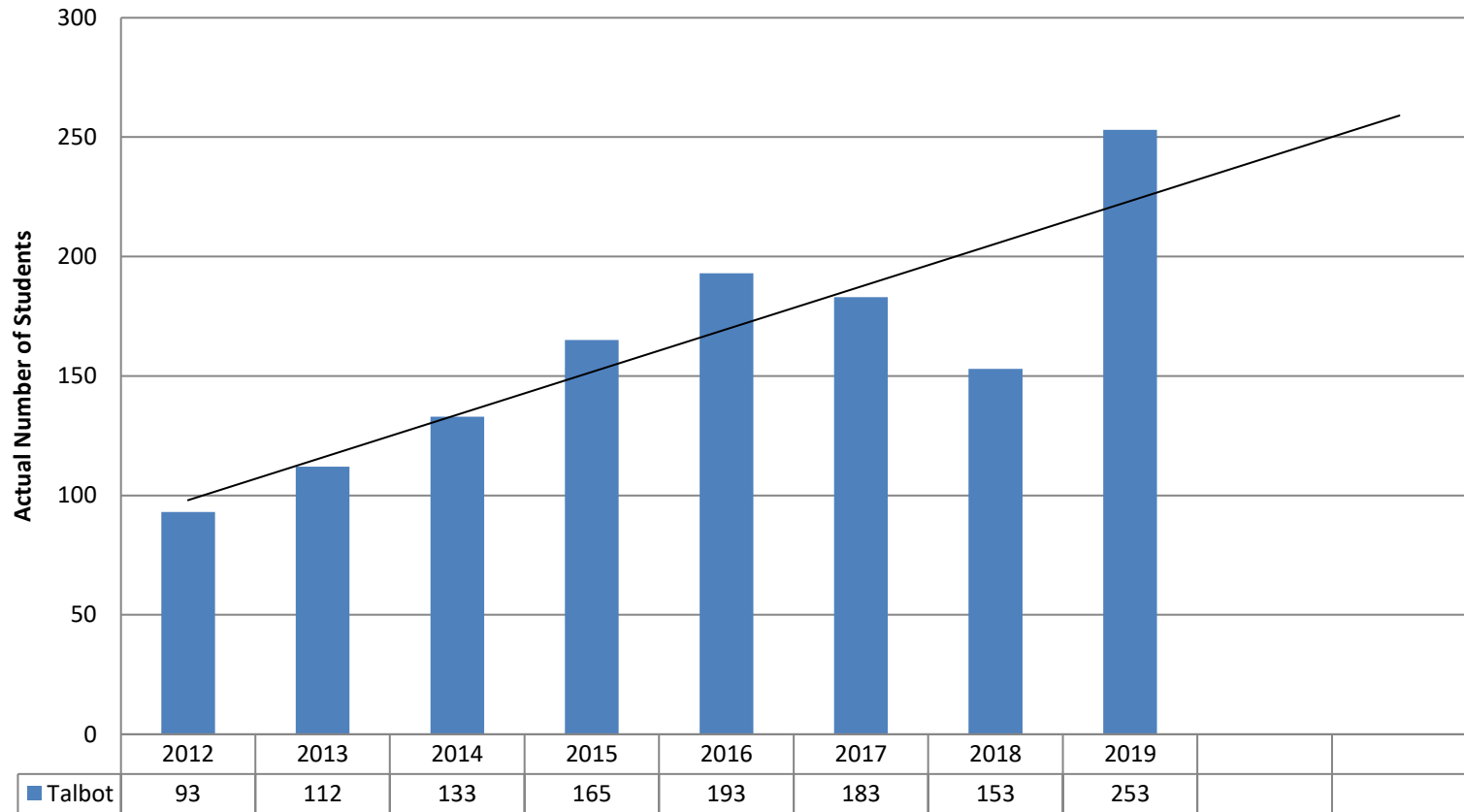
Indicator: Homelessness

FY 13 – Monitor
 FY 16 – Concern
 FY 17 – Concern
 FY 18 – Concern
 FY19 – Concern
 FY20 - Concern

TCPS Homeless Students



TCPS Homeless Students



Source: TCPS, 1/20

FY 17 – 2.7% of total TCPS population Percent by race of total homeless Hispanic – 51.2%, AA – 25%, White – 18.6%, Multi-race – 4.8%

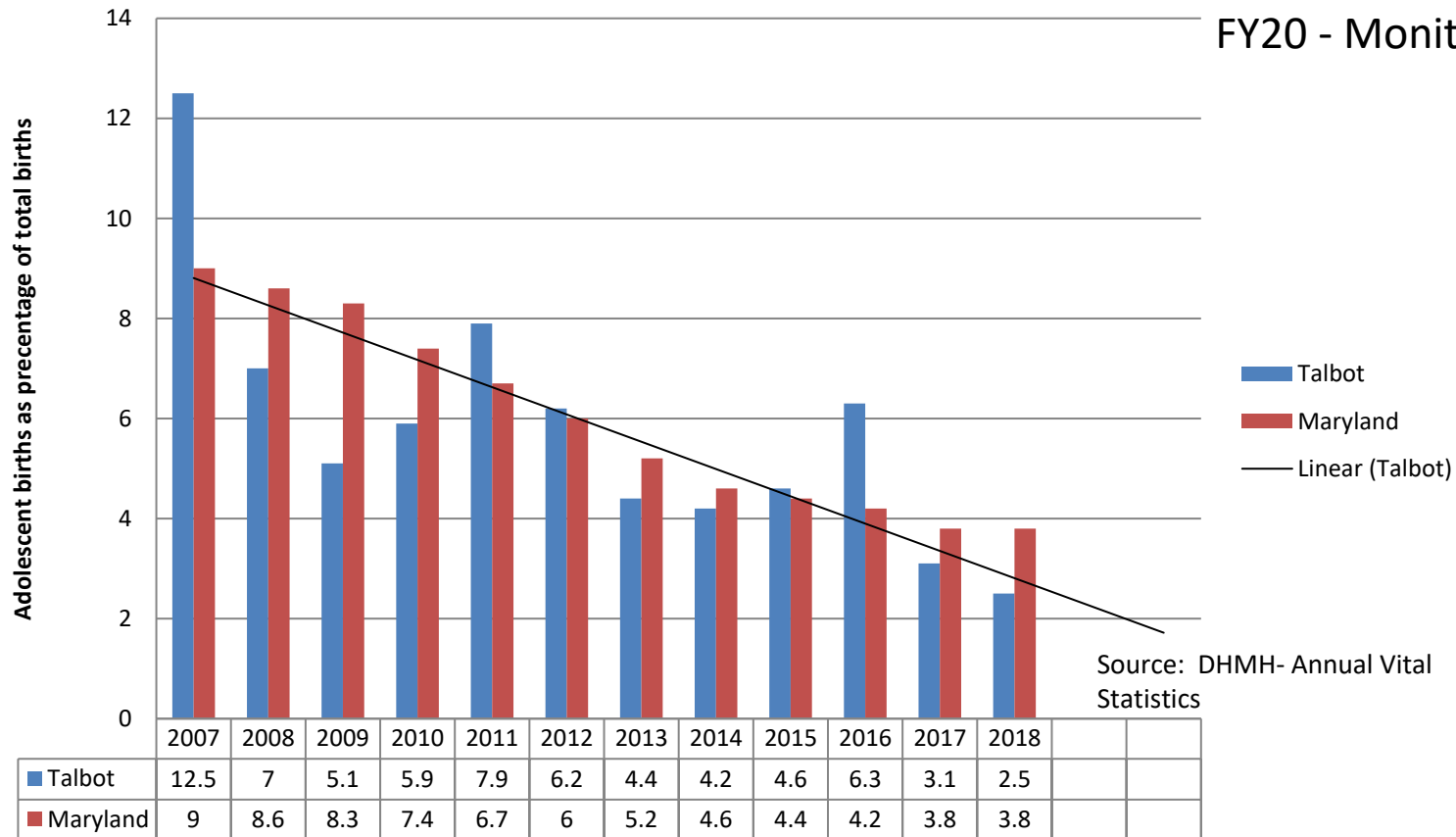
FY 18 – 3.3% of total TCPS population Percent by race of total homeless Hispanic – 48%, AA – 25%, White – 22%, Multi-race – 6%

FY 19 – 5.4% of total TCPS population Percent by race of total homeless Hispanic- 62%, AA-19%, White – 10%, Multi-race – 8%

Indicator: Births to Adolescents

FY 13 – Monitor
 FY 16 – Positive Progress
 FY 18- Monitor
 FY19 - Monitor
 FY20 - Monitor

Births to Adolescents (Ages 10-19)



Source: DHMH- Annual Vital Statistics

Source: MD Department of Health Annual Vital Statistics 2018

Talbot Births to Adolescents

Actual Numbers

Year	<age 15	Age 15-17	Age 18-19	Total
FY 12	1	5	14	20
FY 13	0	6	9	15
FY 14	0	2	12	14
FY 15	1	6	8	15
FY 16	0	7	14	21
FY 17	1	2	8	11
FY 18	0	2	6	8

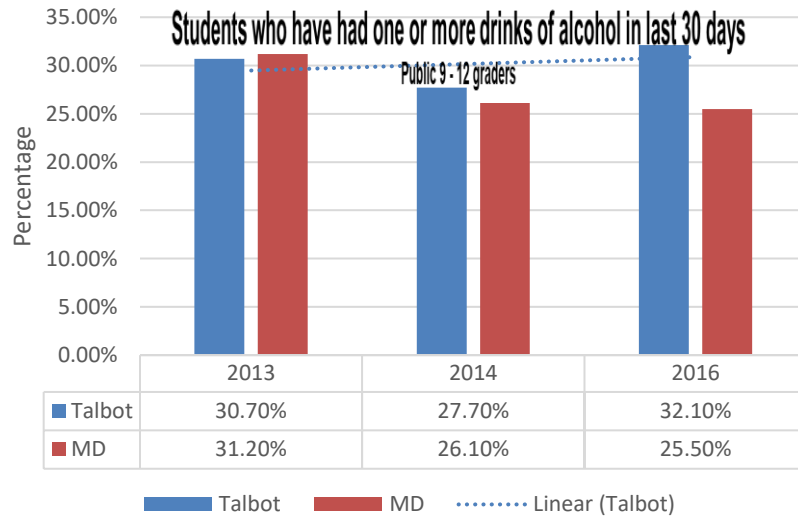
Source: MD Department of Health Annual Vital Statistics 2018

FY 17 – Births by race of mother – 54.5% White, 36.4% Black, 36.4% Hispanic

FY 18 – Births by race of mother – 87.5% White, 12.5% Black, 62.5% Hispanic

Indicator: Substance Use

FY 13 – Concern
 FY 16 – Concern
 FY 17 – Concern
 FY 18 – Concern
 FY19 – Concern
 FY20 - Concern



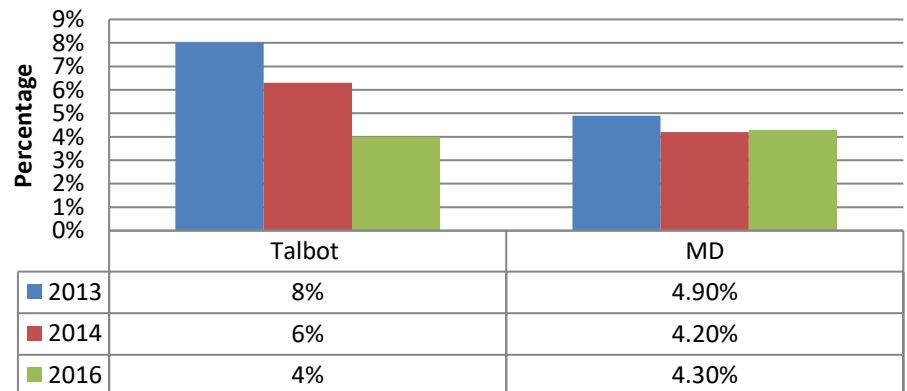
YRBS, Middle School
 Ever had a drink of alcohol
 2013 N= 606 22.3%= 135 students
 2014 N=666 17%= 113 students
 2016 N=533 22.7%=121 students

Data Source: YRBS
 Actual Number
 2013 N=770 30.7% = 236 students
 2014 N=875 27.7%=242
 2016 N=1,026 32.1%=329

Data Source: YRBS
 Actual Number
 2013 N=824 8%=66 students
 2014 N=929 6.3%=58
 2016 N=1,088 4%=44

Students who have used heroin at least once in lifetime

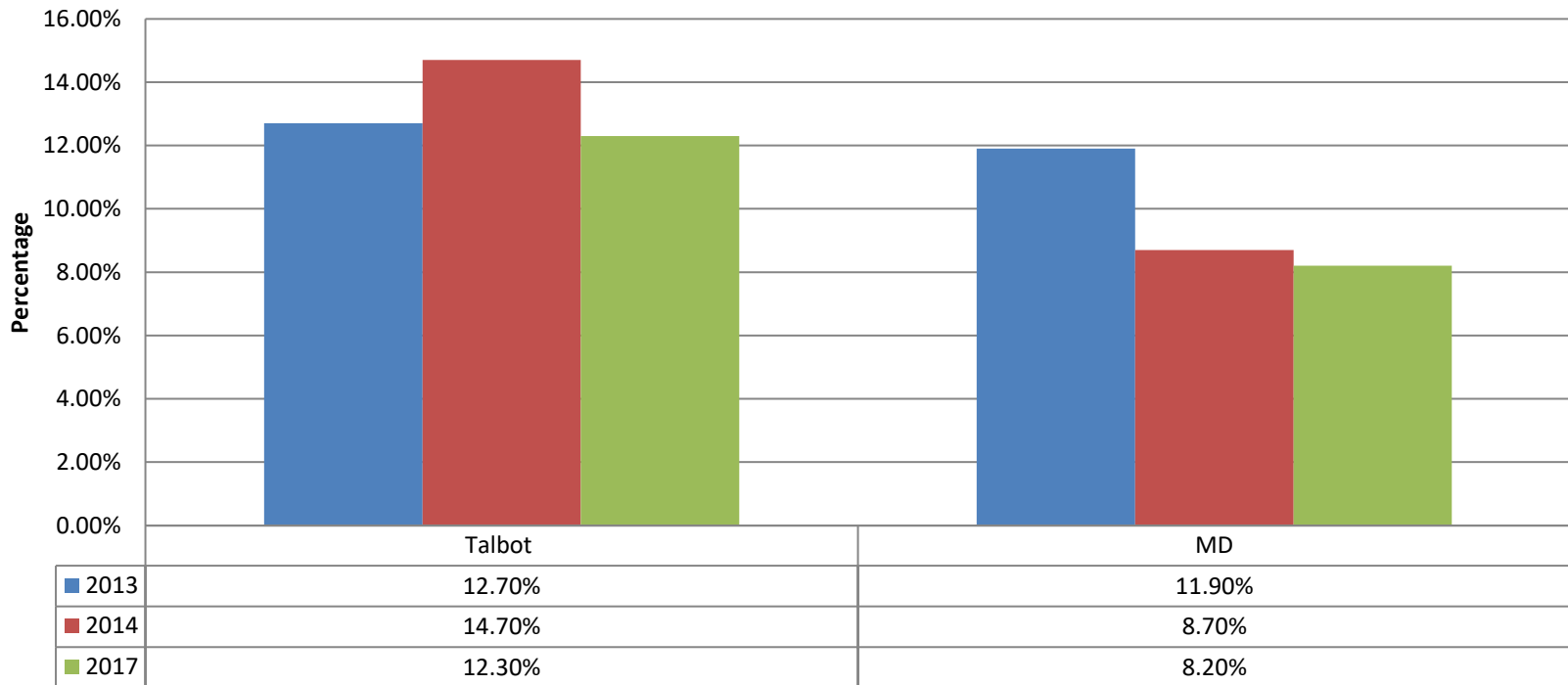
Public 9 - 12 graders



Indicator: Tobacco Use Smoking

FY 13 – Monitor
 FY 16 – Monitor
 FY 17 – Monitor
 FY 18 – Concern
 FY19 – Concern
 FY20 - Concern

**Student who have smoked tobacco at least once in last 30 days,
 public 9-12 graders**



Data Source: YRBS, QN 32, Actual

2013 N=771 16%=123

2014 N=929 14.7%=136

2016 N 1,100 12.3%=114

YRBS Middle School, QN19

2013 N=636 3.6%=23 students

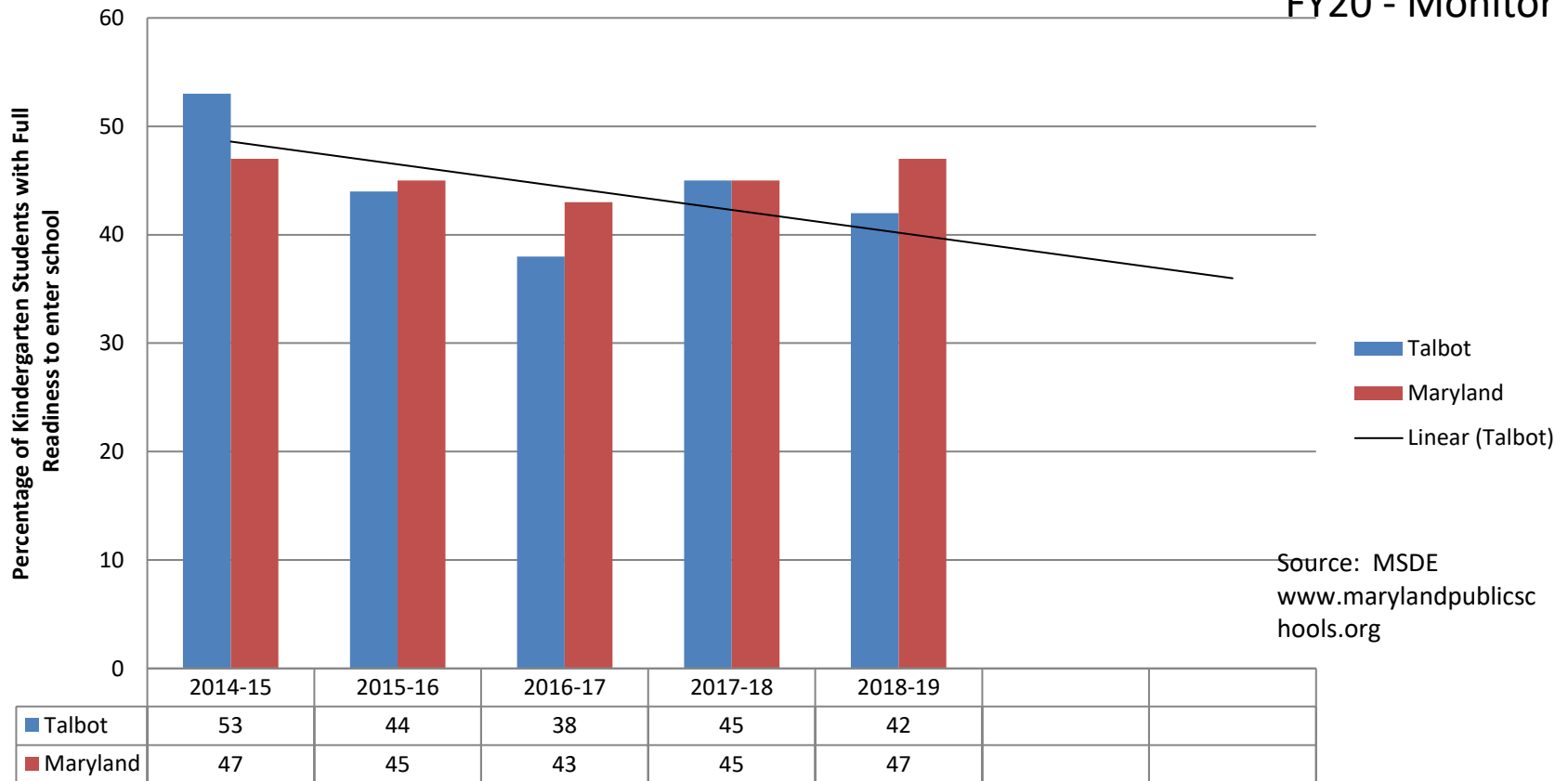
2014 N= 697 2.4%=17 students

2016 N=558 1.9%=11

Indicator: Kindergarten Assessment

FY 16 – Baseline
 FY 18- Concern
 FY19 – Concern
 FY20 - Monitor

Kindergarten Readiness



Source: MSDE
www.marylandpublicschools.org

Academic Achievement

FY20- Concern (racial disparities)

ACHIEVEMENT (E/M/H)	PERCENT PROFICIENT					
	PERCENT	MATH		ENGLISH LANGUAGE ARTS		
		ANNUAL TARGET	IMPROVEMENT	PERCENT	ANNUAL TARGET	IMPROVEMENT
Asian	56.3% / 56.3% / na	✓	✓	62.5% / 68.8% / na	✓	✓
Black/African Amer.	21.7% / 7.4% / 19.2%	✗	✓	25.3% / 19.5% / 24%	✗	✓
Hispanic/Latino	22.5% / 8.3% / 18.2%	✗	✗	31.3% / 25% / 30.2%	✓	✓
White	56.8% / 30.6% / 53.3%	✓	✓	60.7% / 46.2% / 68.8%	✓	✓
Two or more races	39.1% / 20% / 70%	✓	✓	53.1% / 35.6% / na	✓	✓
Students w/Disabilities	13.5% / 4.2% / 14.3%	✗	✓	12.4% / 5.1% / 23.8%	✓	✓
English Learner	10.3% / 0% / 4.3%	✓	✓	9.6% / 2.1% / 8.7%	✓	✓
Econ. Disadvantaged	24.8% / 8.5% / 20.4%	✗	✗	31.9% / 20.8% / 34%	✗	✓
All Students	43% / 22.8% / 44%	✗	✓	48.6% / 38.1% / 56.7%	✓	✓

Footnote: Only Student Groups with 10 or more students are reported. Student Groups include the following: American Indian/Alaskan Native, Asian, Native Hawaiian or Other Pacific Islander, Black/African American, Hispanic/Latino of any Race, White, Two or More Races, Economically Disadvantaged, Students with Disabilities, and English Learners. ✓ =Met ✗ =Not Met

MSDE. Starting in FY 20 using this slide in lieu of PARCC slides

PARCC Test

FY 16 – Measure Changed

FY 17 – New Data

FY 18- Concern

FY 19 – Concern

FY20- SEE Academic Ach

Students Meeting or Exceeding Expectations

Grade	Language Arts			Math		
	2016	2017	2018	2016	2017	2018
3 rd	37.7%	41%	51%	42.9%	42%	46%
4 th	46.5%	44%	47%	39.5%	33%	42%
5 th	48.4%	50%	47%	41.6%	44%	40%
6 th	24.4%	36%	33%	24.4%	26%	22%
7 th	41.8%	47%	43%	28.3%	21%	29%
8 th	42.6%	33%	33%	11.3%	7%	<5%

Source: MSDE Talbot County Report Card

High School PARCC

FY 16 – New Measure
 FY 17 – New Data
 FY 18 – Concern
 FY19 – Concern
 FY20- See Academic Ach

Test	Meeting or Exceeding Proficiencies		
	2016	2017	2018
9 th Grade English	Too few	Too few	Too few
10 th Grade English	51.3%	55%	52%
11 th Grade English	Too few	Too few	Too few
Algebra I	38.2%	36.9%	29%
Algebra II	Too Few	40.3%	36%
Geometry	Too few	Too few	Too few

Source: MSDE Talbot County Report Card

Indicator: High School Program Completion

FY 16-17 – More Information

FY 18 – More Info Needed

FY19 – Monitor

FY20 - Monitor

Completion Category:	2014	2015	2016	2017	2018	2019
a. Univ MD Course Requirements	26.1%	36.7%	30.1%	53.2%	83	83 (24.1%)
b. Career & Tech Ed Program Requirements	26.7%	27.3%	28.8%	23.6%	98	73 (21.2%)
c. Both Univ & Career / Tech Requirements	30.9%	11.4%	21.8%	19.4%	91	89 (25.9%)
d. Rigorous High School Program Indicator	27.9%	26.3%	31.1%	33.9%	105	77 (22.4%)
e. At least one of the above categories	84.1%	75.4%	80.8%	78.8%	1	

Educational Attainment

Talbot Population age 25 and older

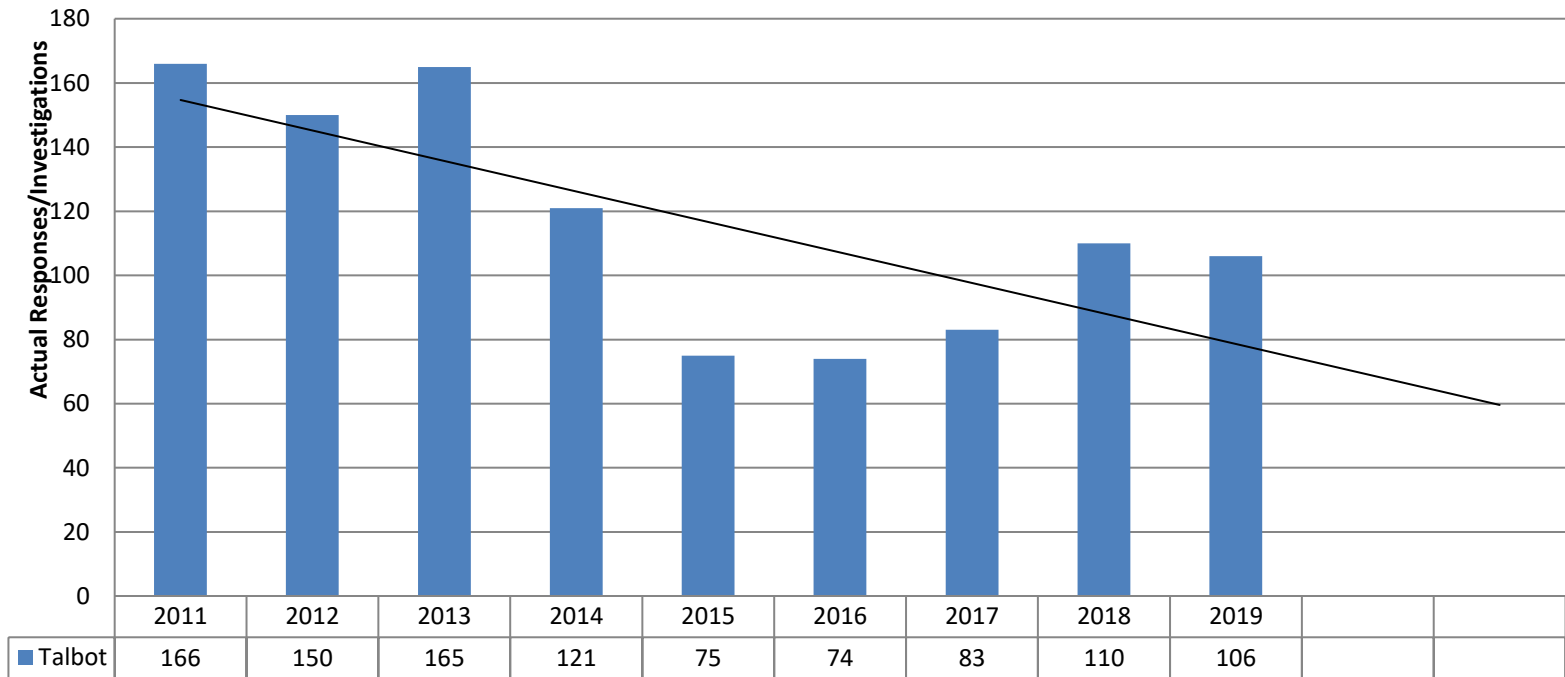
	2015	2016	2017	2018
< 9 th grade	4.4%	3.8%	3.5%	3%
9 th -12 th grade (no diploma)	7.1%	7.1%	7%	6.4%
HS Grad/GED	27.9%	26.2%	25.7%	25.6%
Some college – No degree	20.2%	20.6%	19.4%	18.6%
Talbot Population < AA degree	59.6%	57.7%	55.6%	53.6%
MD < AA degree	62.2%	55.2%	54.4%	52.4%

Source: US Census American Community Survey, 5 year estimates

Indicator: Maltreatment

FY 13 – Monitor
FY 16 – no data
FY 17 - Monitor
FY 18 – Monitor
FY19 – Concern
FY20 - Concern

Talbot Child Protective Services Responses

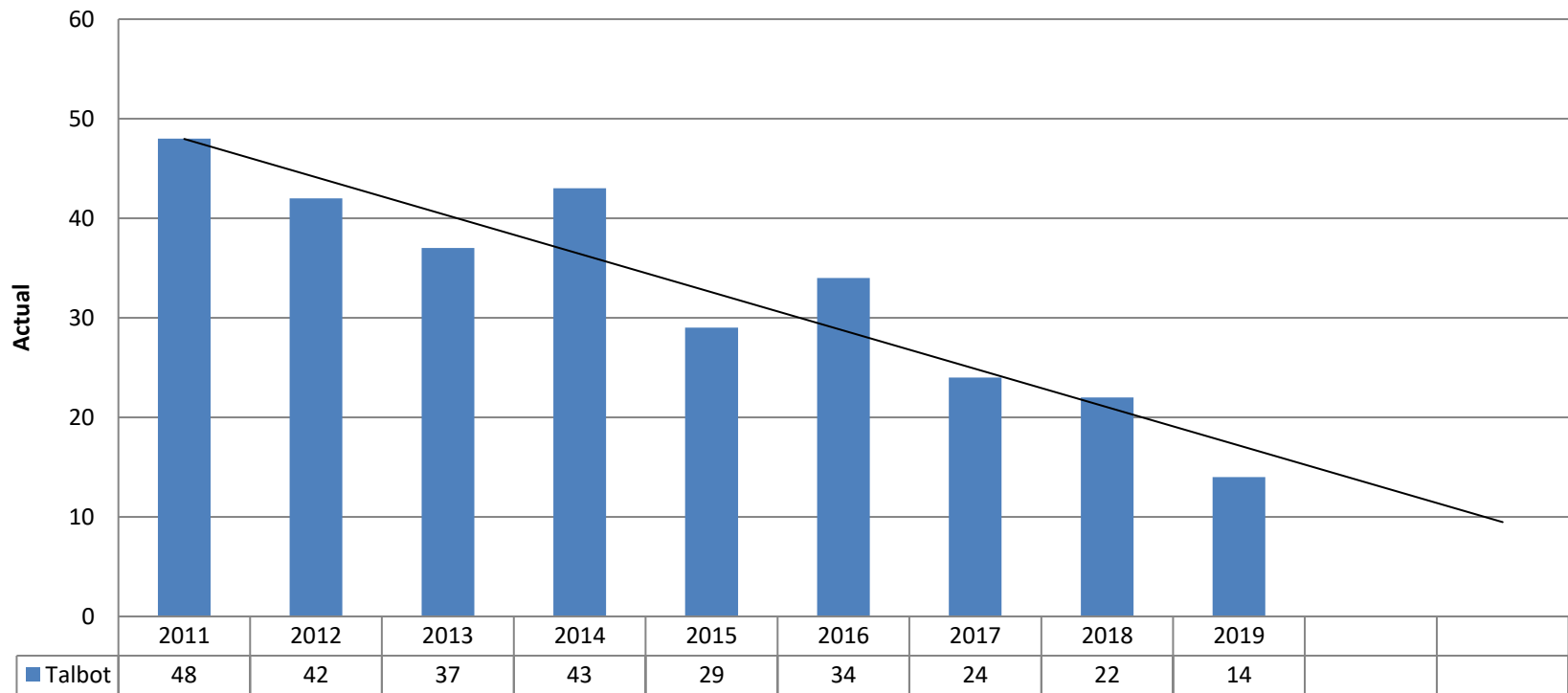


Source: Talbot County Department of Social Services

Indicator: Out-of-Home Placement

FY 13 – Monitor
 FY 16 – Monitor
 FY 17 – Monitor
 FY 18 – Monitor
 FY19 – Monitor
 FY20 - Monitor

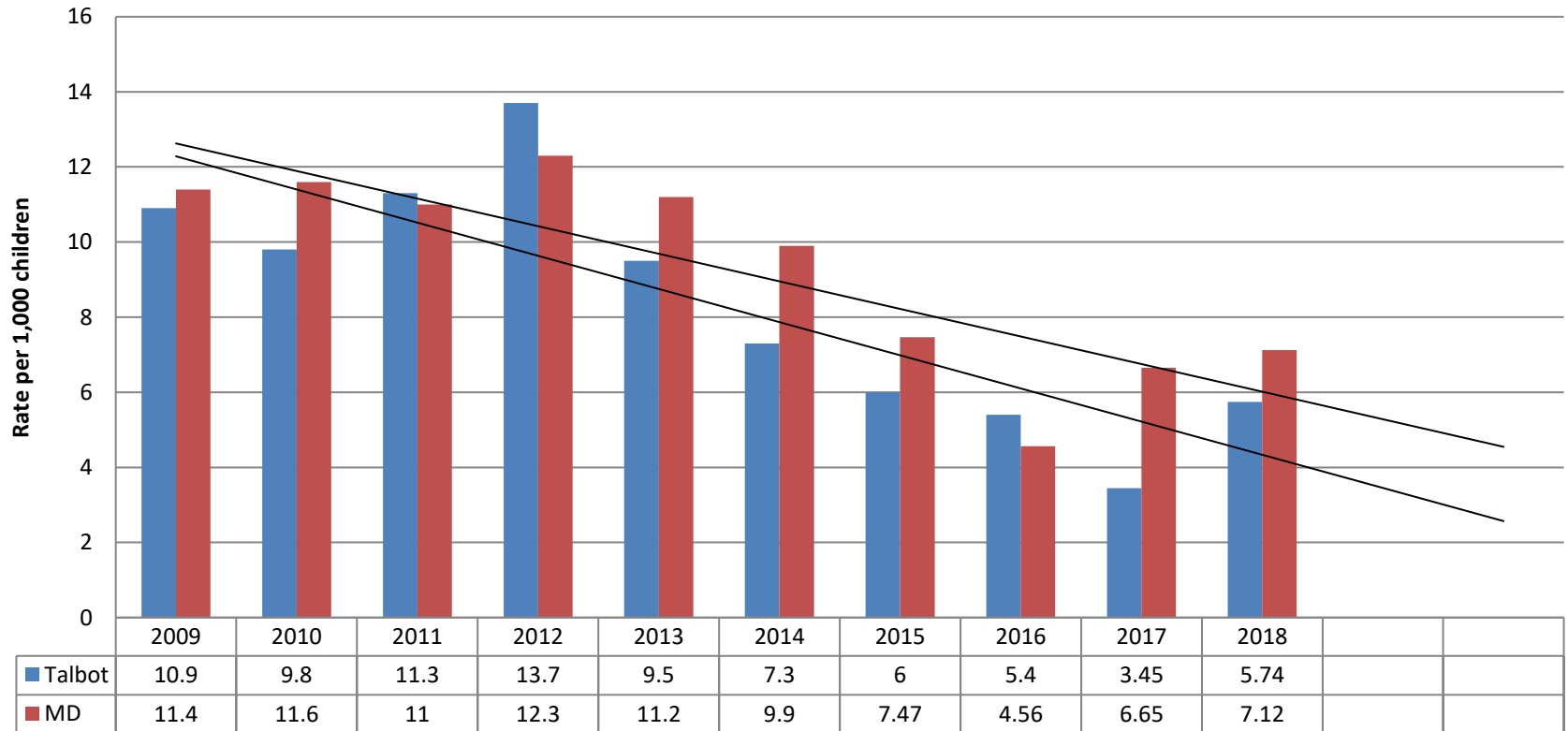
Talbot Out of Home Placement



Source: Talbot County Department of Social Services

FY19 – BY Race – White-8, Black -3, Multi-Race - 3

Out of Home Placements Rate per 1,000 children

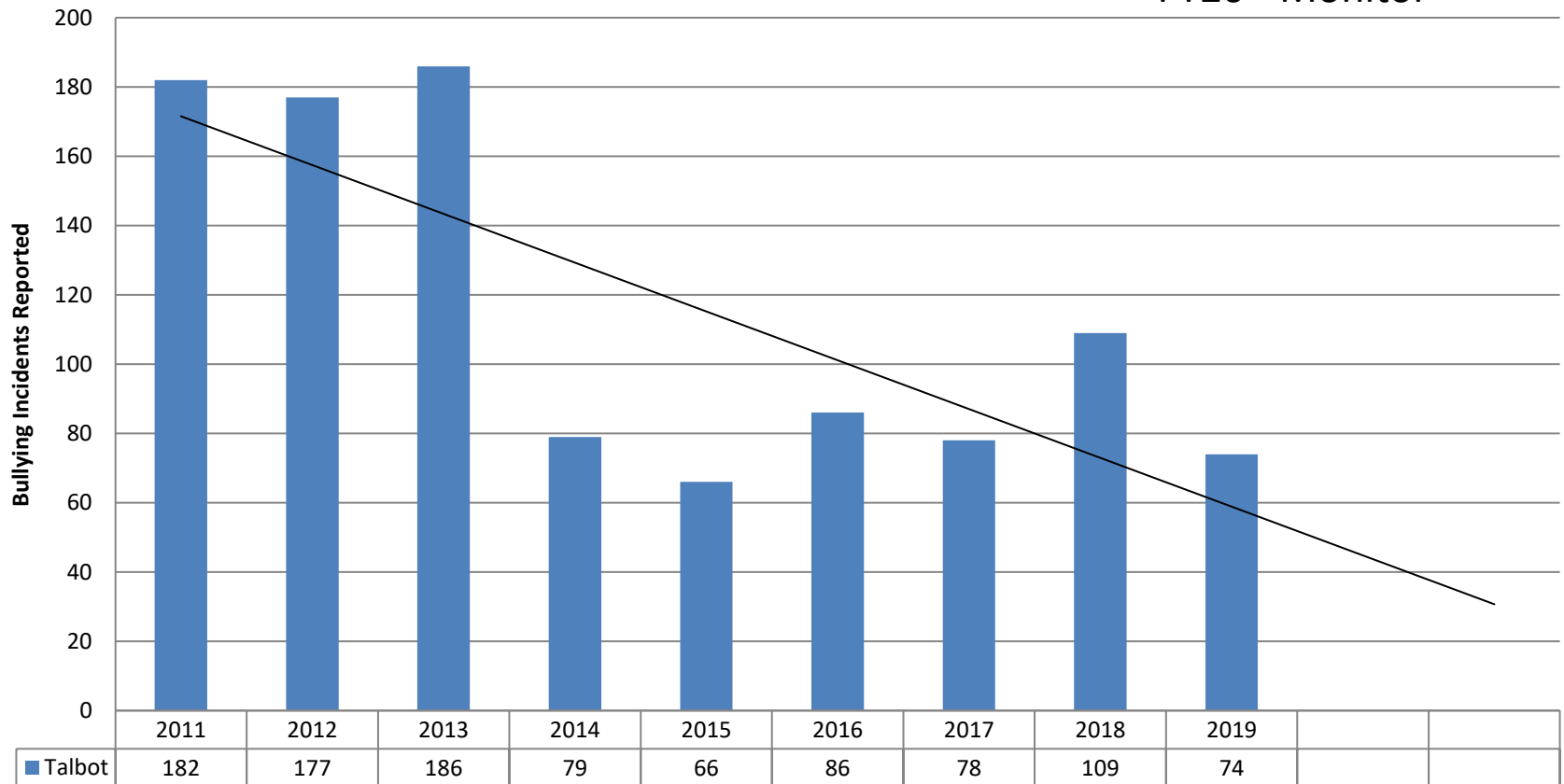


Source: DHR FY18 Out of Home Placement and Family Preservation Plan

Indicator: Bullying and Harassment

FY 13 – Concern
 FY 16 – Positive Progress
 FY 17- Positive Progress
 FY 18 – Monitor
 FY 19 – Monitor
 FY20 - Monitor

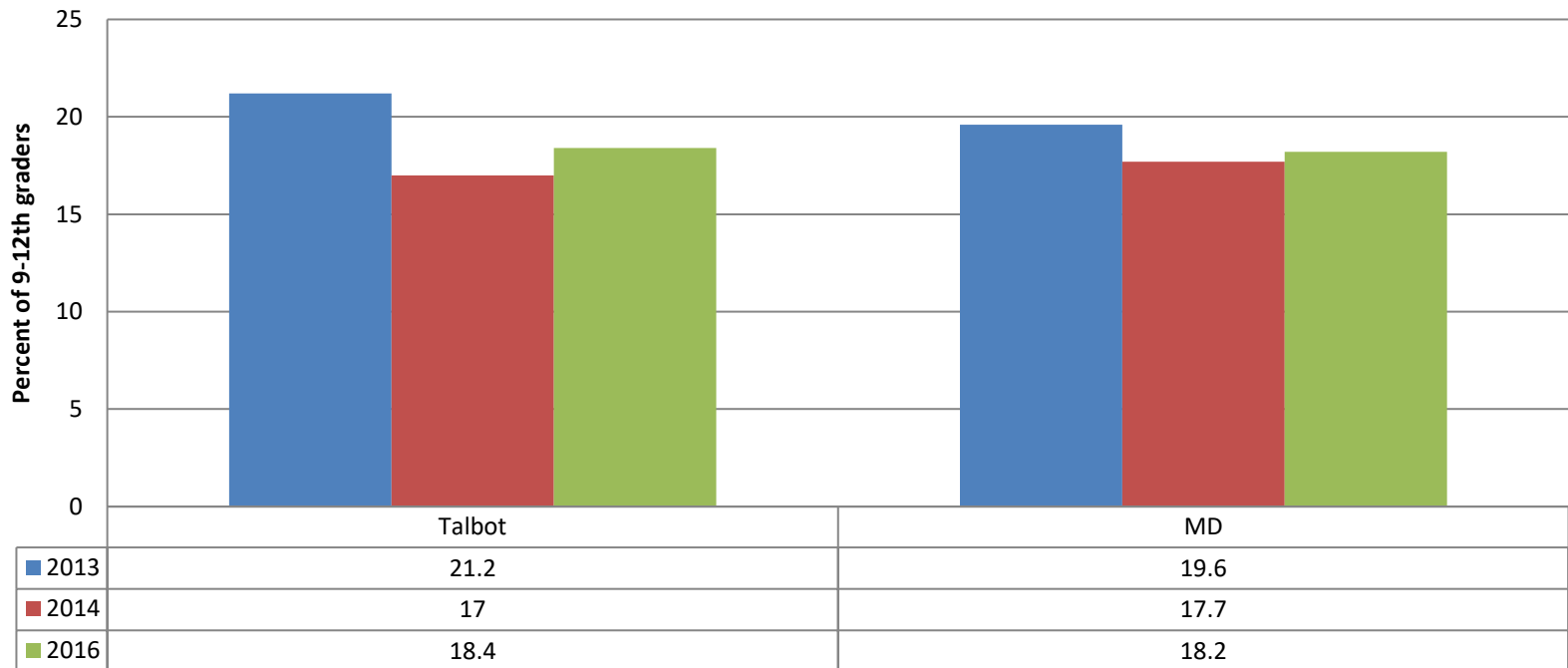
TCPS Bullying Incident Reports



Source: TCPS

Bullying

Students who report being bullied on school property in past 12 months

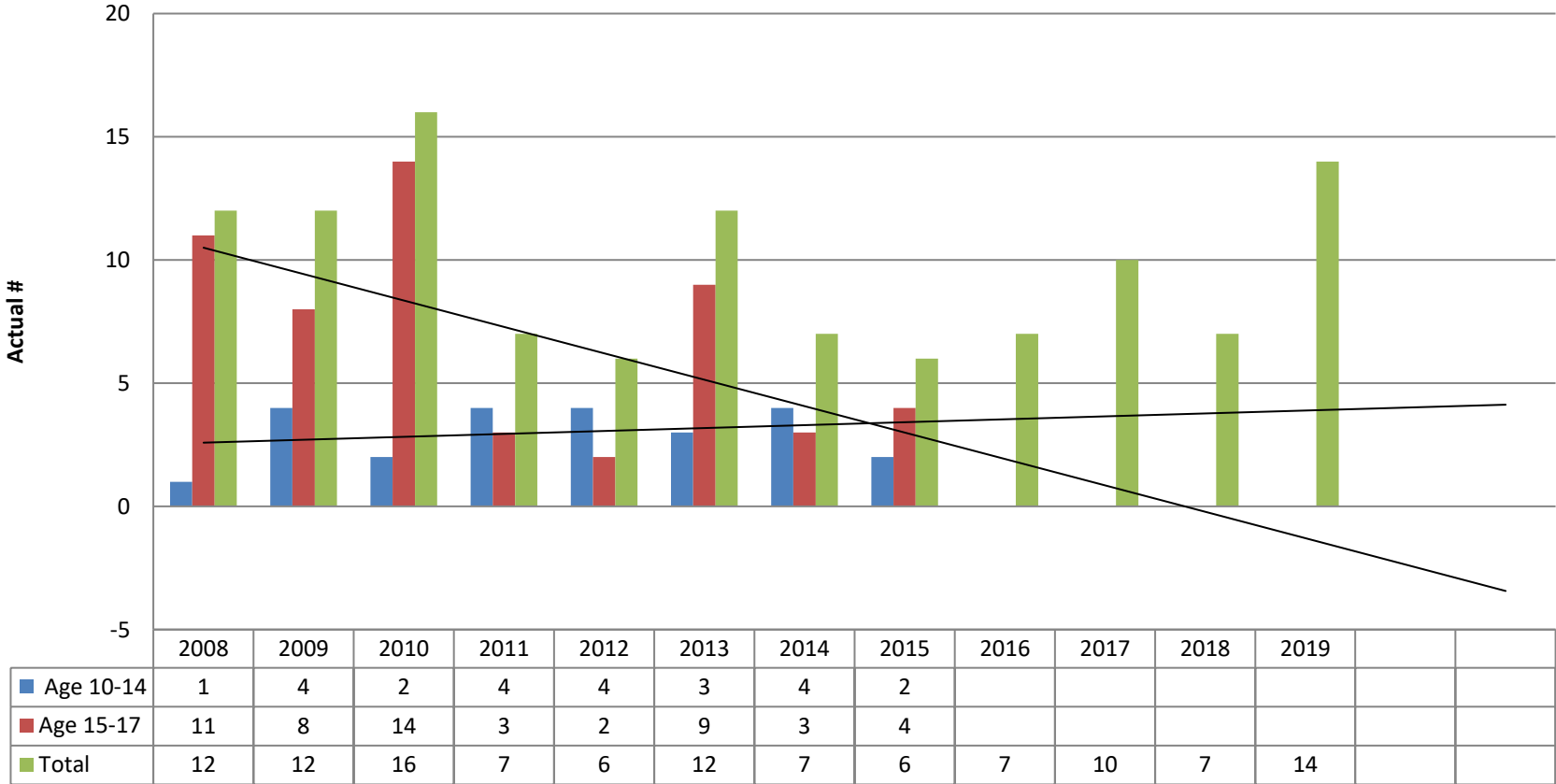


Source: YRBS, QN23, Actual
2013 N=826 21.2% = 175 students
2014 N=949 17%=161
2016 N=1,094 18.4%=201

Indicator: Juvenile Felony Offenses

FY 13 – Monitor
 FY 16 – Positive Progress
 FY 17 – Positive Progress
 FY 18 – Positive Progress

Juvenile Violent Felony Complaints

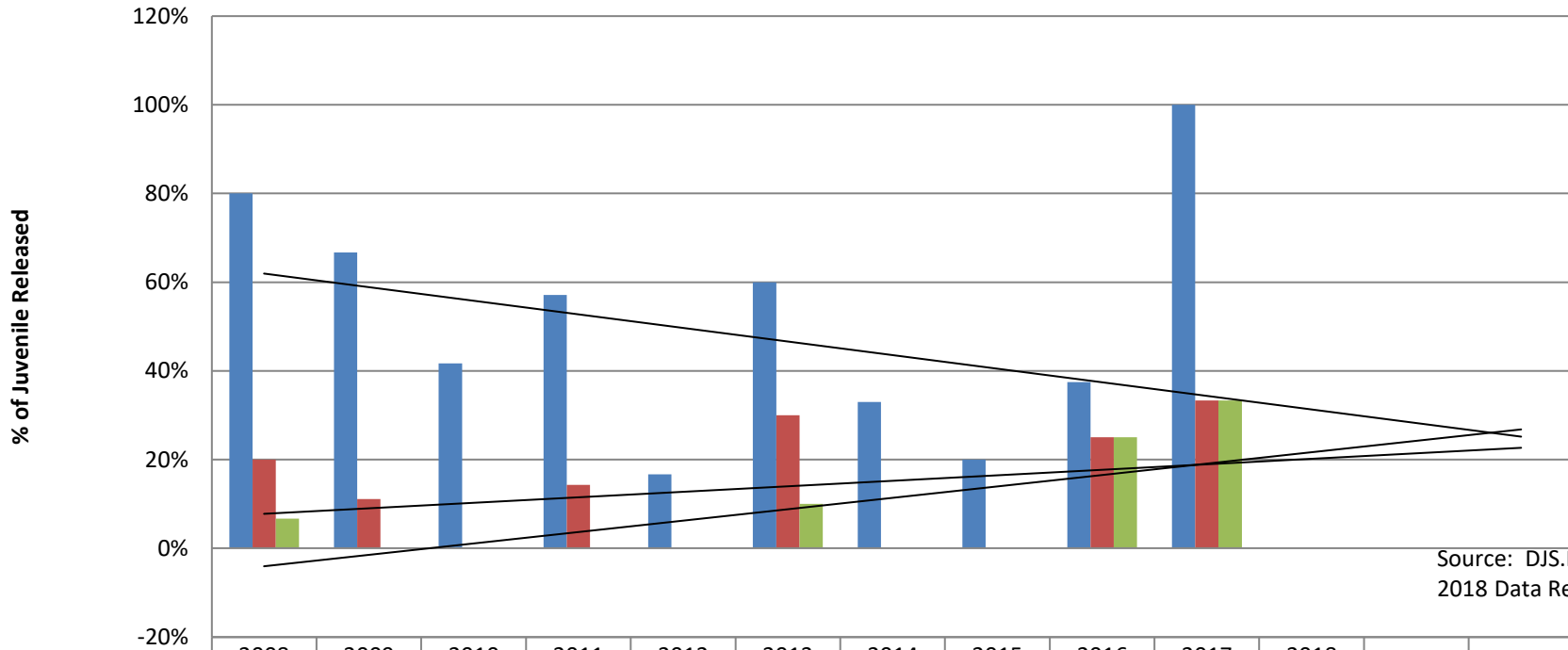


Source: DJS Annual Statistical Report

Indicator: Recidivism

FY 13 – Positive Progress
 FY 16- Concern
 FY 17- More Information
 FY 18 – Monitor

Juvenile Recidivism



Source: DJS.Maryland.Gov FY 2018 Data Resource Guide

	2008	2009	2010	2011	2012	2013	2014	2015	2016	2017	2018		
■ Re-arrest	80%	66.70%	41.70%	57.10%	16.70%	60%	33%	20%	37.50%	100%	0%		
■ Reconviction	20%	11.10%	0%	14.30%	0%	30%	0%	0%	25%	33%			
■ Reincarceration	6.70%	0%	0%	0%	0%	10%	0%	0%	25%	33%			

	2009	2010	2011	2012	2013	2014	2015	2016	2017	2018
# of Releases	18	12	7	6	10	3	5	8	3	1

Indicator: HS Completion of Students with Disabilities

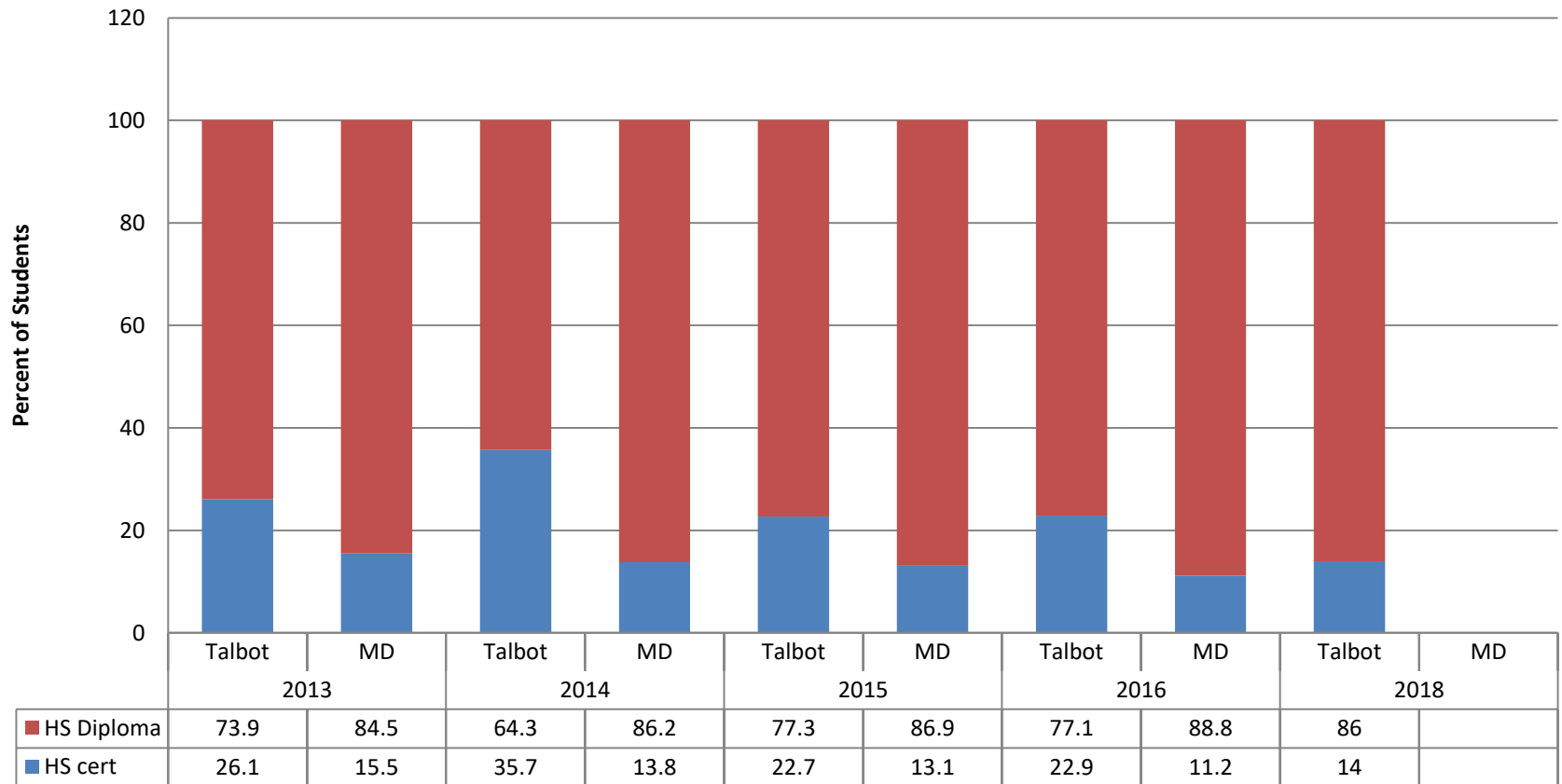
FY 13 – Positive Progress

FY 16- Positive Progress

FY 17- Positive Progress

FY 18 - Positive Progress

High School Completion by Special Education Students

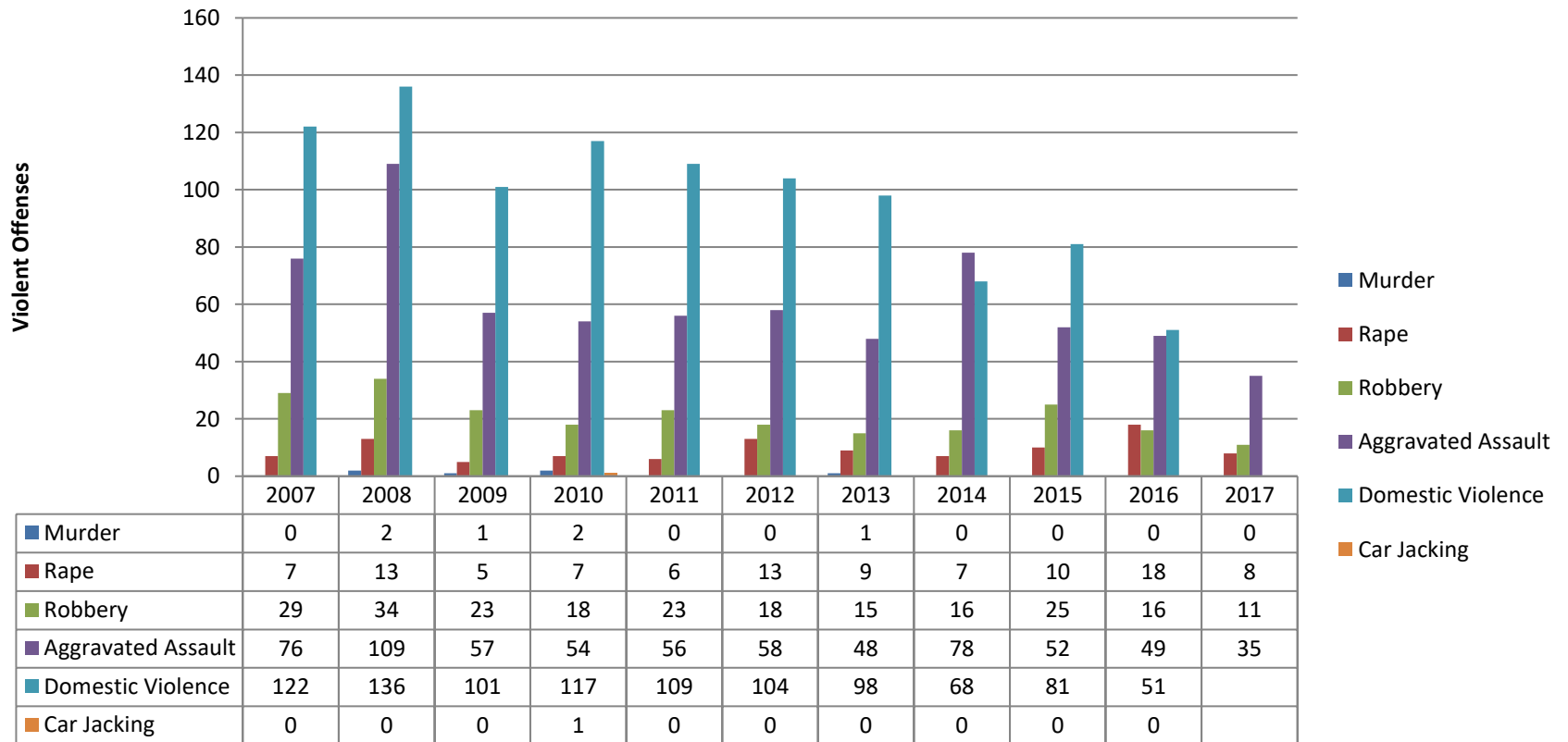


Source: MSDE, TCPS Student Service
2/19 update

Indicator: Crime

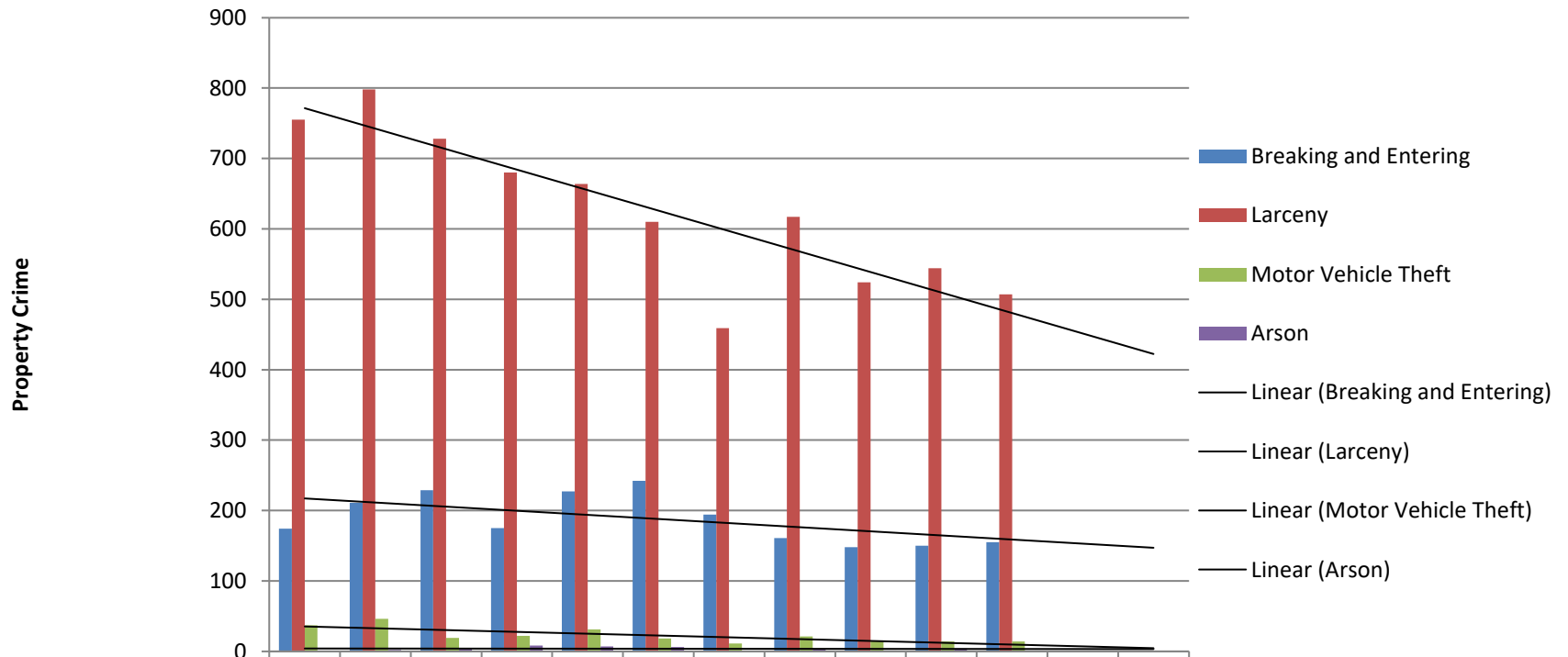
FY 13 – Monitor
 FY 16-17 – Positive Progress
 FY 18 – Monitor

Violent Offenses (Adult)



Source: GOCCP/Uniform Crime Report, 2017
 Note: Data for 2017 Domestic Violence and Car Jacking not available.

Property Crime Talbot County



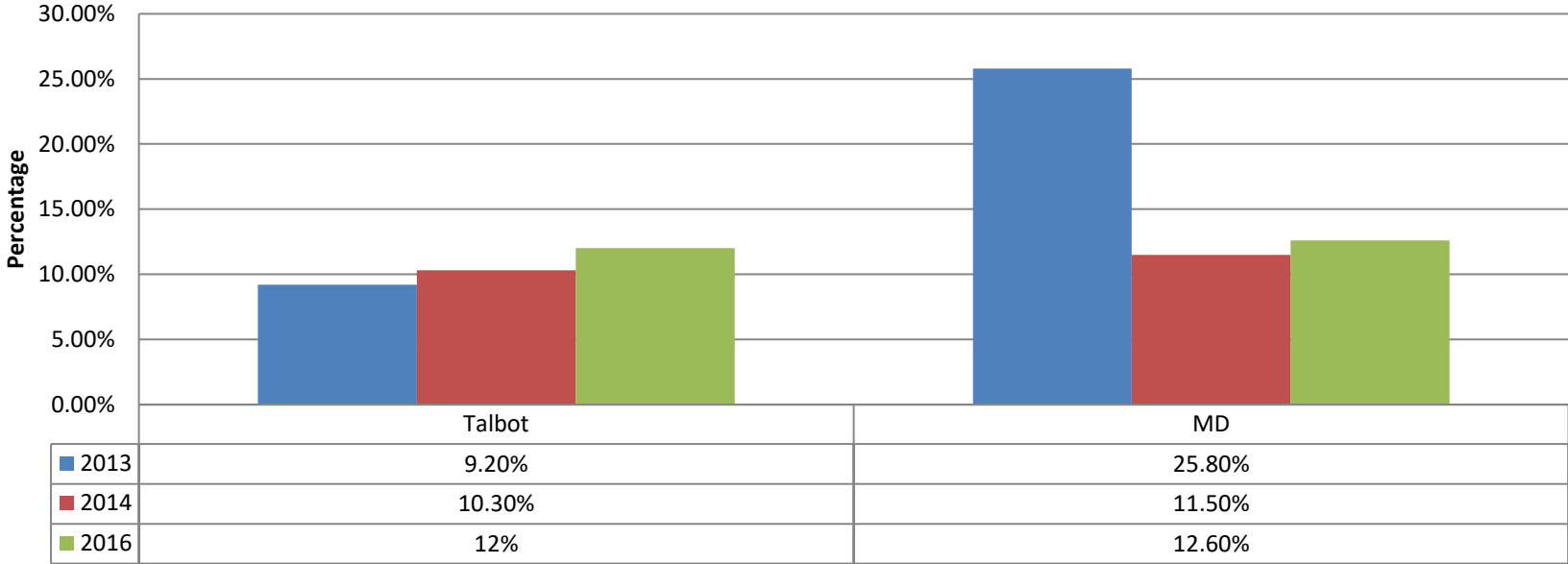
	2007	2008	2009	2010	2011	2012	2013	2014	2015	2016	2017		
Breaking and Entering	174	211	229	175	227	242	194	161	148	150	155		
Larceny	755	798	728	680	664	610	459	617	524	544	507		
Motor Vehicle Theft	37	46	19	22	31	18	11	21	14	14	14		
Arson	1	2	4	8	7	6	0	3	1	4			

Source: 2017 Maryland Uniform Crime Report Note – 2017 Data for Arson not available.

Indicator: Obesity

FY 13 – Concern
 FY 16 – Monitor
 FY 17 – Monitor
 FY 18 – Monitor

Childhood Obesity 9-12 graders



Data Source: YRBS, QNOBESE
 Calculated from Self Report of Height and Weight

Actual Numbers

2013 N= 745	9.2%= 69 Students
2014 N= 692	10.3%=90 Students
2016 N=986	12%=118 Students

Indicator: Health Insurance Coverage

FY 13 – Positive Progress

FY 16 – Positive Progress

FY 17 – Positive Progress

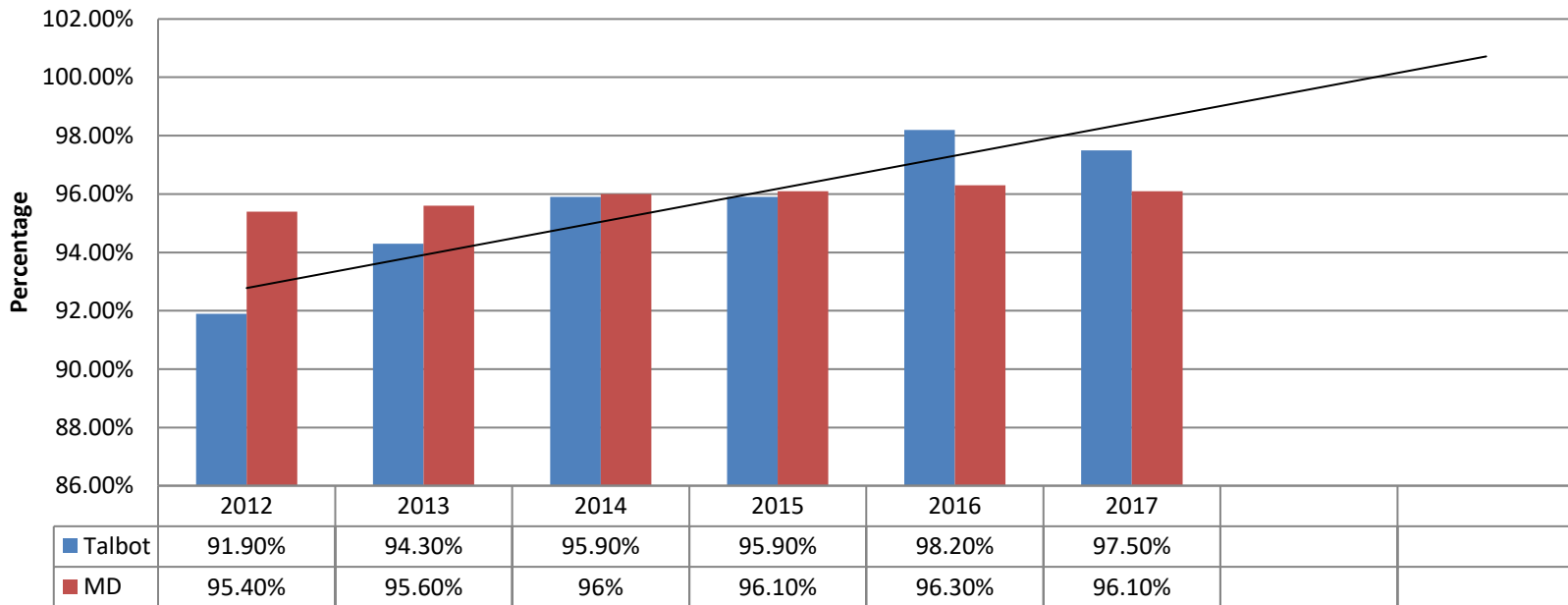
FY 18 – Positive Progress

2018 Data Change

18% Public Insurance (Medical Assistance, Medicare, VA)

50% Private Health Insurance

Health Insurance Children, ages 0 to 18



Data Source: US Census, ACS, 2017 5 Yr Estimate

Indicator: Immunizations

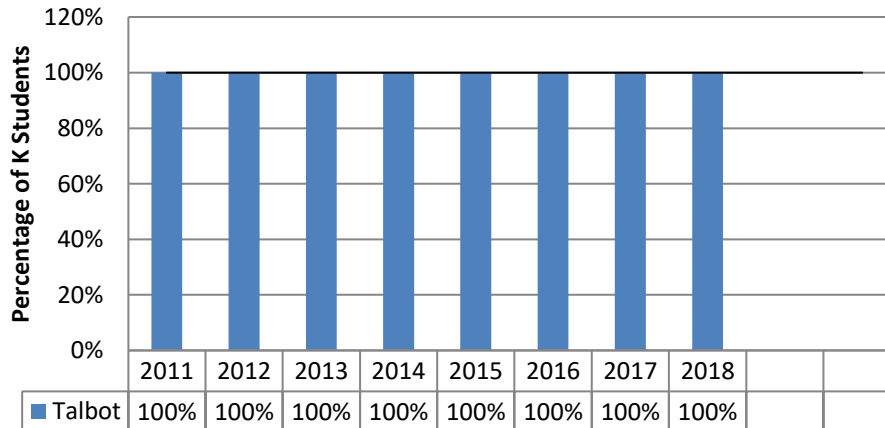
FY 13 – Positive Progress
 FY 16 –Positive Progress
 FY 17- Positive Progress
 FY 18 – Monitor

Estimated Vaccination Coverage Among Children Between the Ages of 19 Months - 35 Months, Survey Years 2002 - 2013v

	2006	2007	2008	2009	2010	2012	2013
MD	78.1%	91.3%	80.2%	84.0%	73.3%	73%	81.9%
US	76.9%	77.4%	76.1%	76%	74.9%	71.9%	77.7%

Talbot Students Fully Immunized upon Kindergarten Entry

Source: National Immunization Survey



Source: TCHD

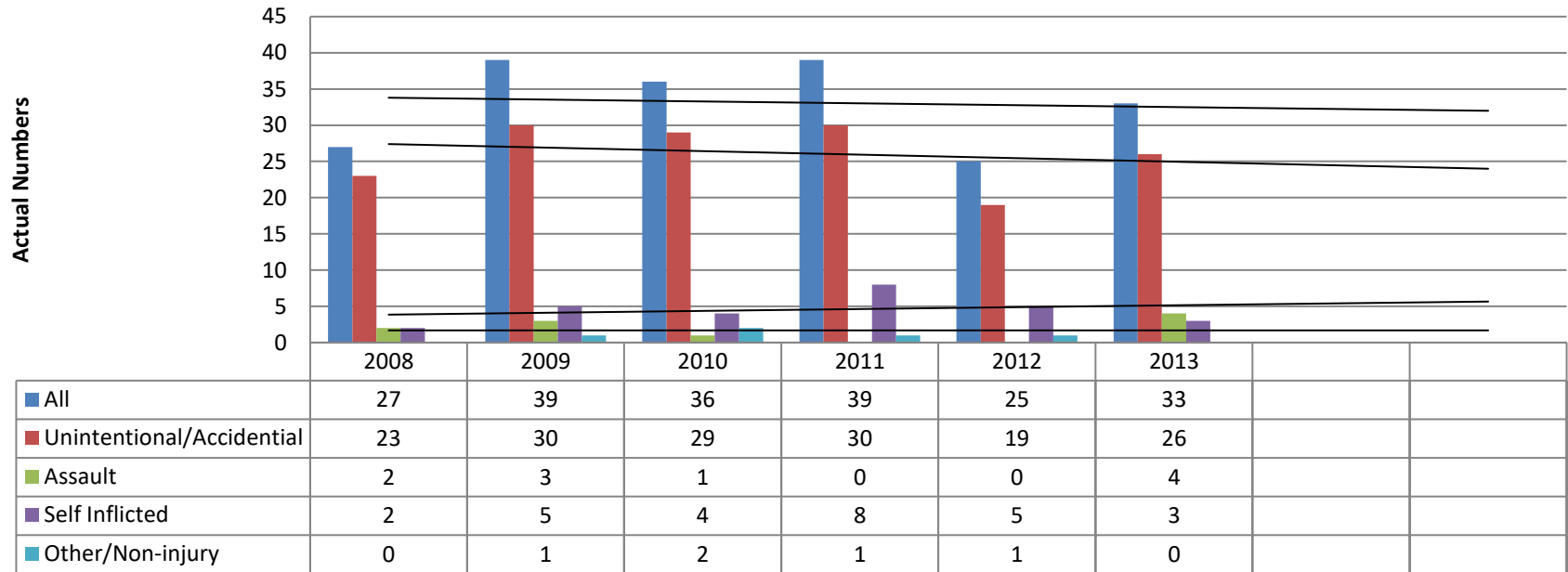
Indicator: Hospitalizations

FY 13 – Positive Progress

FY 16 – Monitor

FY 18 – Monitor

Talbot Youth Hospitalizations Aged 0 -21



2017&2018 – Unable to obtain updated information

Data Sources: MD HSCRC, www.goc.maryland.gov

Data pulled from hospitalization codes

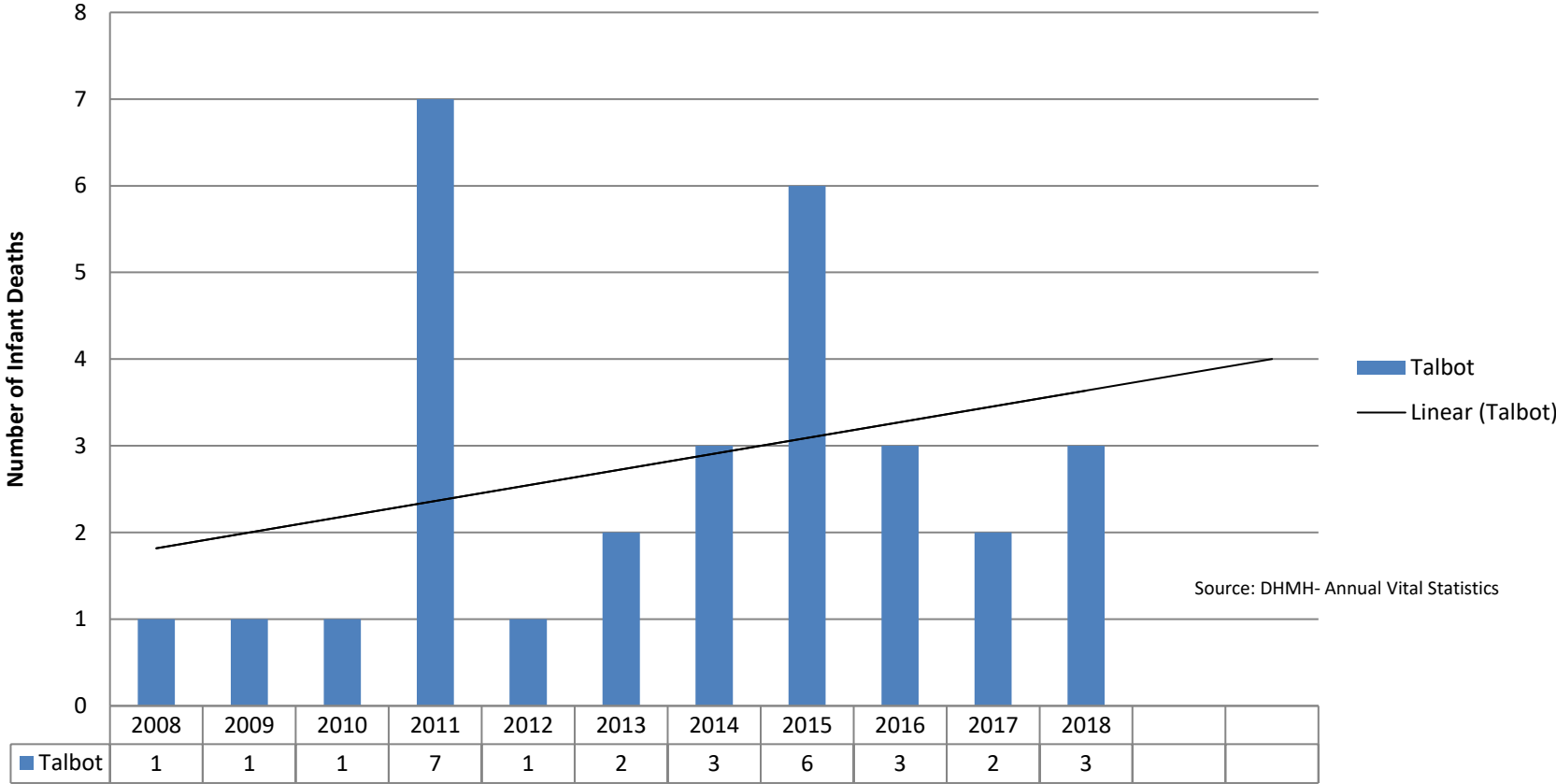
Indicator: Infant Mortality

FY 13 – Positive Progress

FY 16-17 – Monitor

FY 18 - Monitor

Infant Mortality



Source: DHMH- Annual Vital Statistics

Indicator: Low Birth Weight

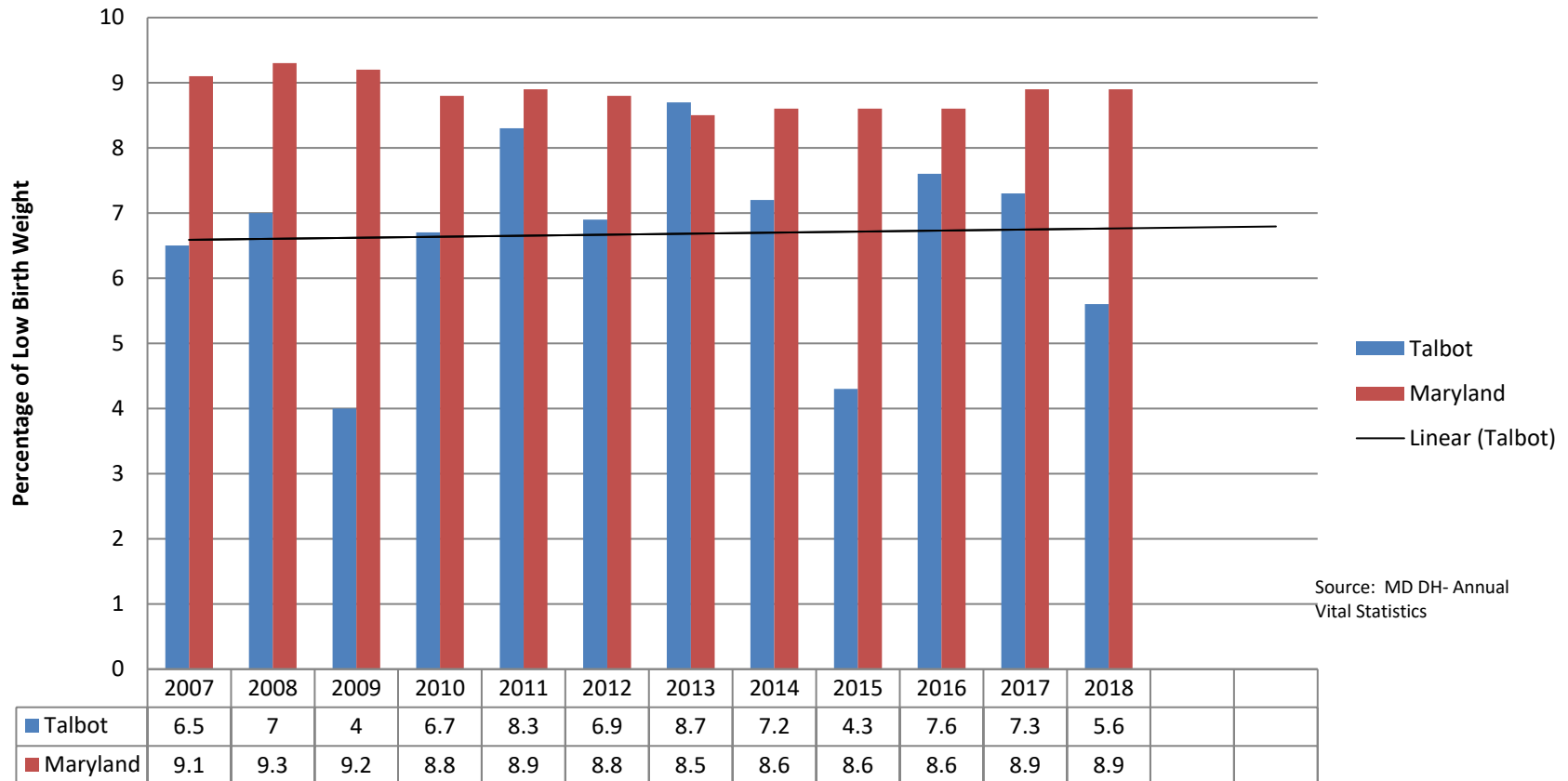
FY 13 – Positive Progress

FY 16 –Positive Progress

FY 17- Positive Progress

FY 18 – Monitor

Low Birth Weight



Source: MD DH- Annual Vital Statistics

Actual Numbers

FY 13 = 30

FY 14 =24

FY 15 = 14

FY 16=25

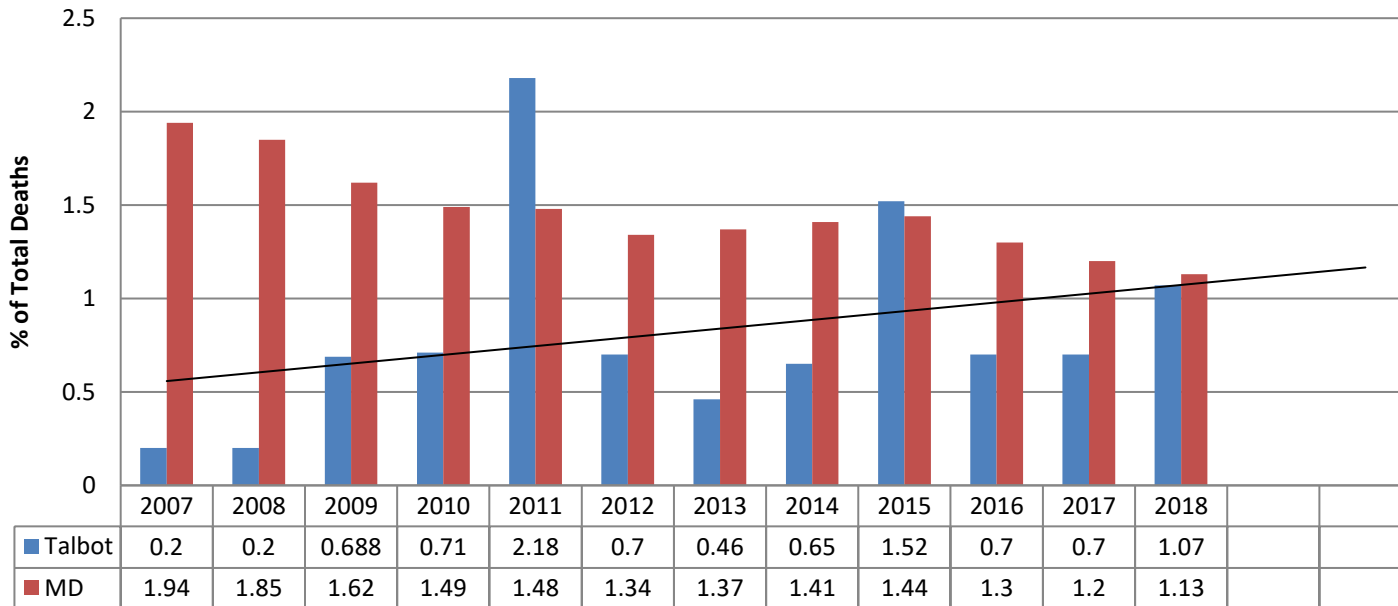
FY17=26

FY18=18

Indicator: Child Deaths

FY 13 – Positive Progress
 FY 16 – Positive Progress
 FY 18- Positive Progress

Child Deaths
 Age <1 to 14



Actual Numbers

FY 12 = 3 FY 13 = 2 FY 14=3 FY 15= 7 FY 16=3 FY17=3 FY18=5