

Talbot County Results and Indicator Data FY 19

Compiled by the
Talbot Family Network

Child Poverty

FY 13 – Monitor

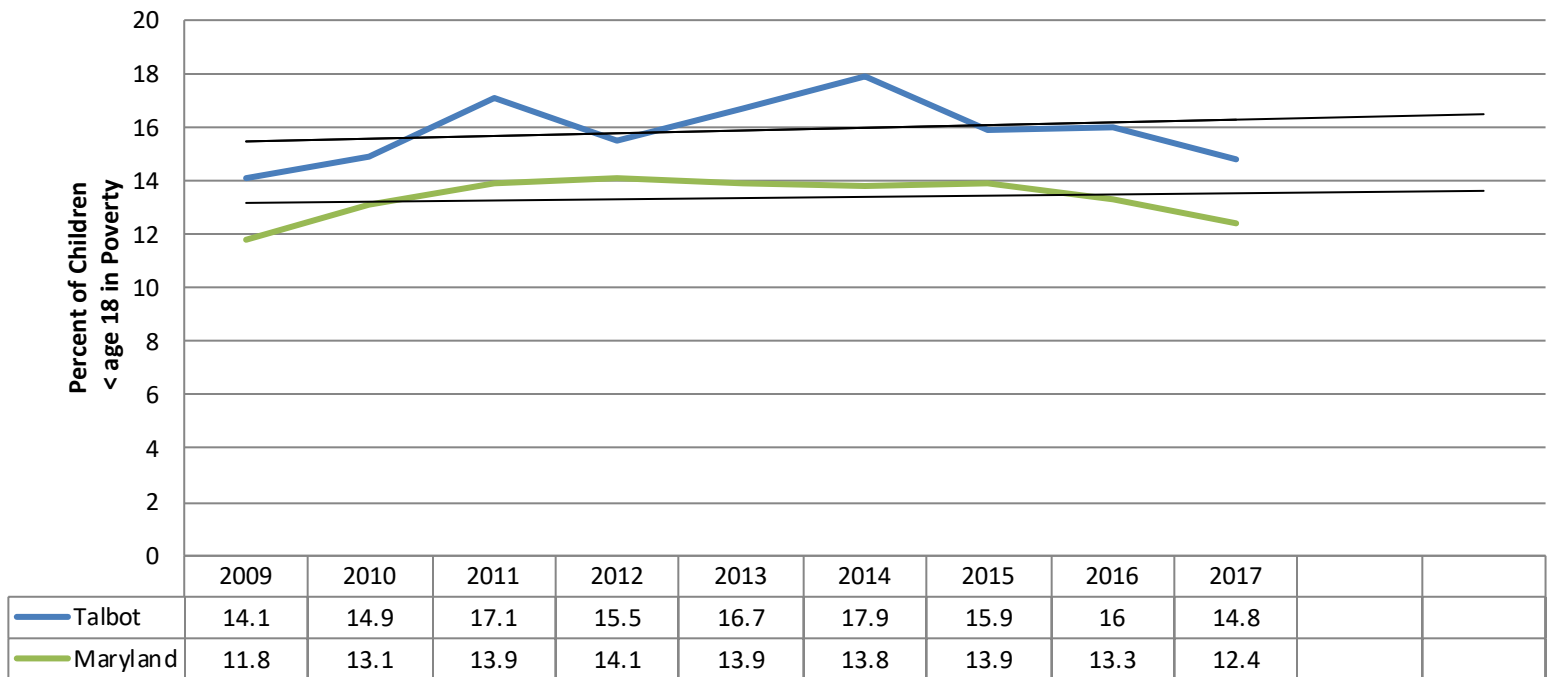
FY 16 – Monitor

FY 17 – Monitor

FY 18 – Concern

FY19 - Concern

Child Poverty



Source: US Census Bureau, Small Area Income and Poverty, 2017 Estimates

Indicator: Child Poverty

Poverty	'12	'13	2014		2015		2016		2017	
			Tal	MD	Tal	MD	Tal	MD	Tal	MD
All Ages	3635 9.7%	4074 10.9%	4333 11.7%	10.4 %	3857 10.4%	9.9%	3827 10.4%	9.7%	3347 9.1%	9.4%
< age 18	1110 15.5 %	1173 16.7%	1238 17.9%	13.8 %	1093 15.9%	13.9%	16%	13%	994 14.8%	12.4%
Families with children age 5-17	761 14.3 %	790 15%	820 15.8%	13.2 %	759 14.8%	12.8%	768 14.9%	12.2%	708 14.1%	11.6%

Source: US Census Bureau, Small Area & Income Poverty
Estimates, 2017

Talbot Poverty Data	2015	2016	2017
Child Poverty**	15.9%	16%	14.8%
Poverty- Female Head of Household, Children age 18 and under*	28.7%	23.7%	23.7%
Poverty – White, all ages*	9.4%	8.8%	8.2%
Poverty – Black, all ages*	21%	23%	20.8%
Poverty – Two of More races, all ages*	22.4%	26.4%	26.1%
Poverty – Latino, all ages*	25.2%	29.2%	27.6%

* US Census Bureau, American Community Survey, 5 year Estimate **US Census, SAIPE

Individuals Below Poverty Level by Race/Ethnicity	Talbot			Maryland		
	2015	2016	2017	2015	2016	2017
Black	21%	23%	20.8%	15%	14.7%	14.1%
Two or More Races	22.4%	26.4%	26.1%	12.6%	12.0%	12.2%
Hispanic or Latino of Any Race	25.2%	29.2%	27.6%	14.1%	14.0%	13.8%
White	8.4%	8.8%	8.2%	7.1%	7.2%	7.1%

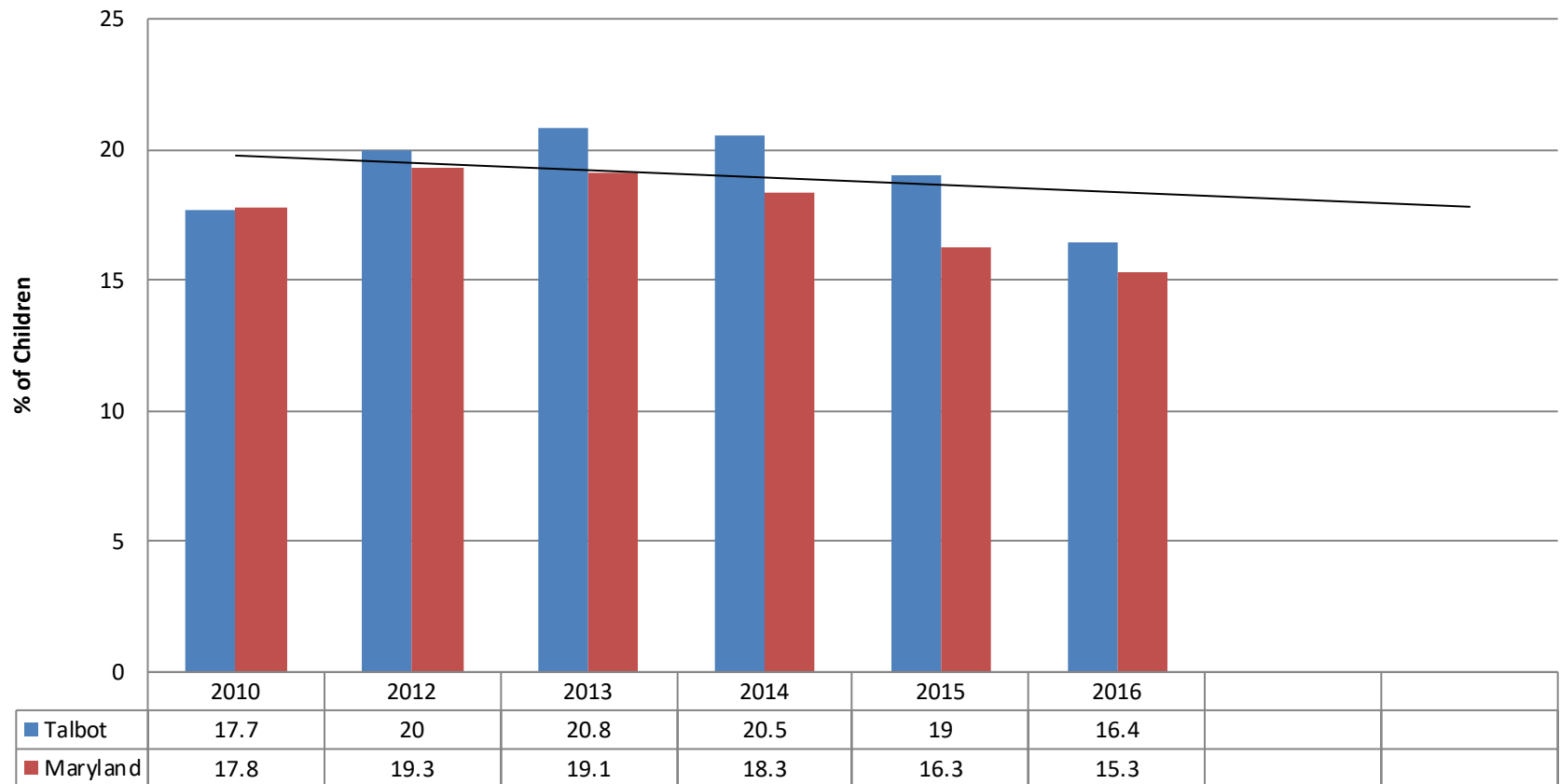
Source: US Census Bureau, ACS, 5 year Estimates

481 Households below poverty/11,300 Total Households
 4.3% of Talbot County Households are below the poverty level.

Indicator: Hunger

FY 13 – Concern
 FY 16 – Concern
 FY 17 – Concern
 FY 18 – Concern
 FY19 - Concern

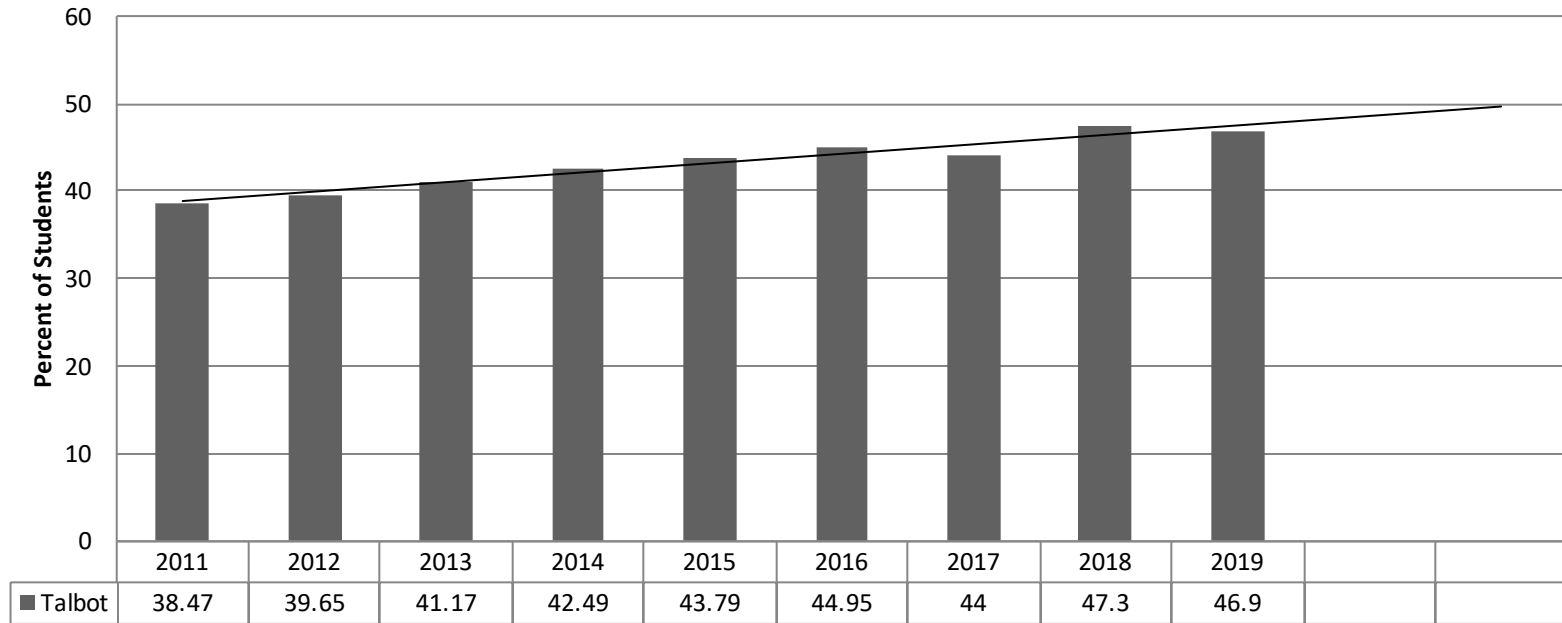
Child Food Insecurity



Source: Feeding America

Map the Meal Gap 2017 = most recent

Free and Reduced Meals Talbot County Public Schools



Source: MSDE, Data updated by TCPS Student Services 2/19

FY 14 = 1,931 students FY 15 = 2,038 FY 16= 2,074 FY 17=2,135 FY18=2,098

Free Meals = 100% or less of Federal Poverty Guidelines

Reduced Meals = 100-185% of Federal Poverty Guidelines

Hunger and Race

Race	Race as % of School System Population	Race as % of same race students receiving FARMs
White	58.39%	26% (705/2713)
Black	16.21%	77.6% (583/753)
Hispanic	17.86%	91.3% (758/830)
Two or more	5.47%	53.9% (137/254)

Source: TCPS, data supplied by Student Service, 2/19

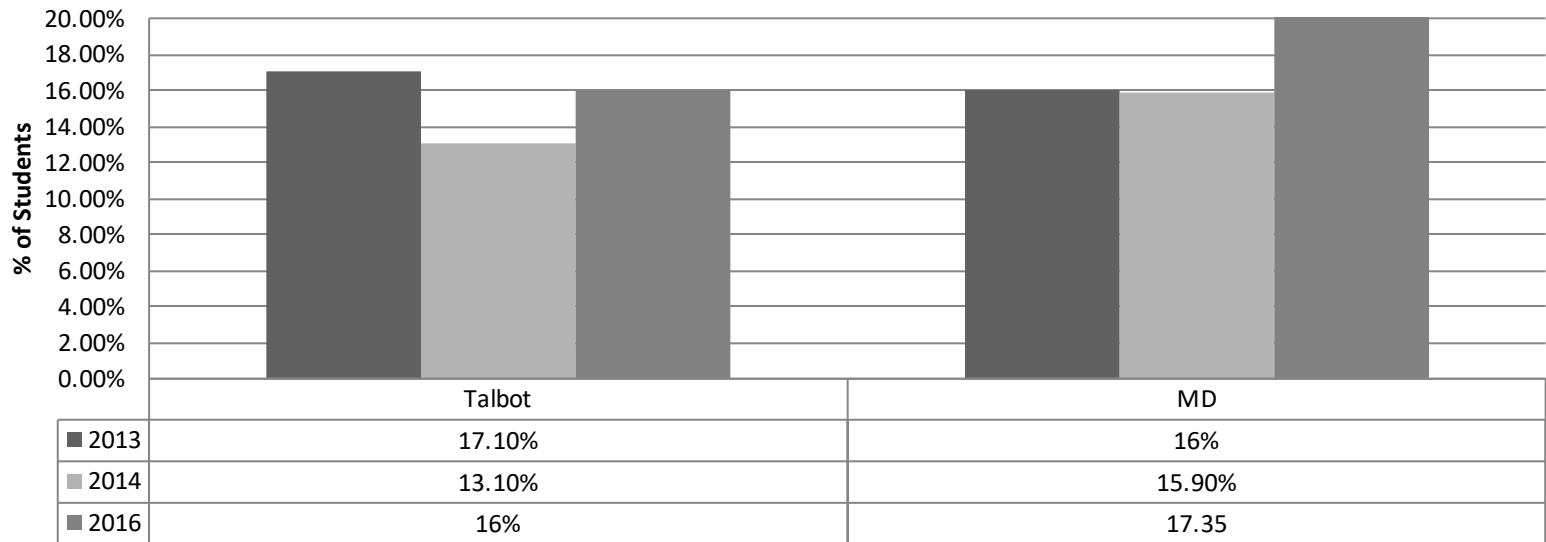
FARMS by School

School	FaRMS YES	Enrollment	% of Enrollment
Easton High	481	1213	39.65%
Easton Elementary	758	1108	68.41%
Easton Middle	384	829	46.32%
St Michaels Middle/	128	422	30.33%
St Michaels Elem	128	298	42.95%
White March	193	379	50.92%
Chapel District	116	377	30.77%
Tilghman	41	104	39.42%
Grand Total	2229	4730	47.12%

Indicator: Mental Health

FY 13 – Concern
 FY 16 – Concern
 FY 17 – Concern
 FY 18 – Concern
 FY19 - Concern

**Students who seriously considered attempting suicide during past
 12 months, Public 9-12 graders**



Data Source: YRBS, QN27 Actual
 2013 N=830 17.1% = 142
 2014 N= 955 13.1%=125

YRBS Middle School, QN 15 Actual
 2013 N=652 17.2% = 112
 2014 N=706 13.3% = 94

% of Talbot High School Students, by sub group, that report Suicidal Ideation	2013	2014	2016
White	14.3%	11.7%	15.9%
Black	12.9%	12.1%	12.95
Hispanic	8.9%	18.4%	20.5%
LGBTQ	47.5%	37%	45.2%

Source: Youth Risk Behavior Survey, Maryland, Talbot County

2016 is most recent data

Impact of Incarceration on Children and Families

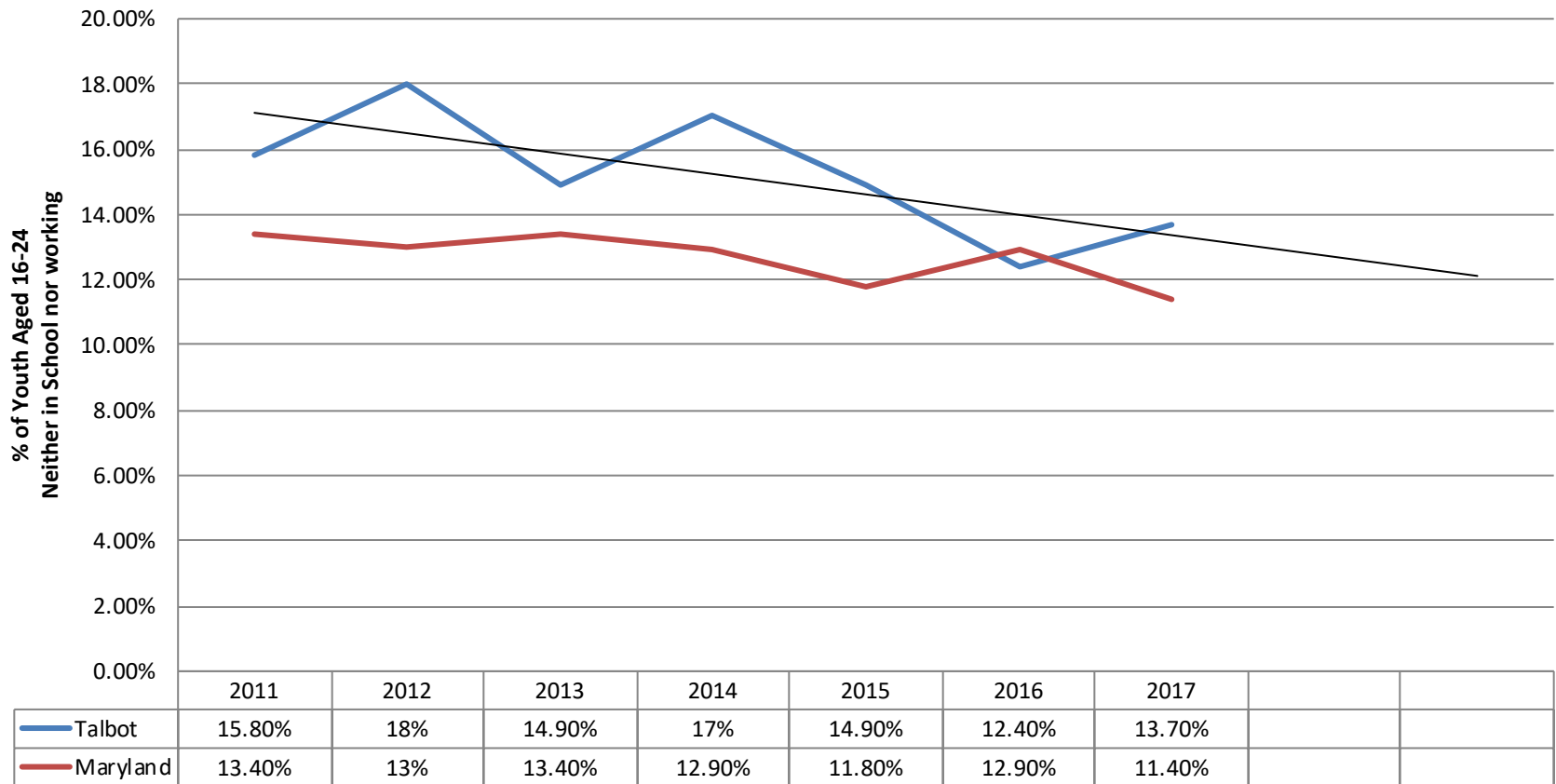
- 162 Talbot residences are currently incarcerated in MD State Prisons According to (July 2016 MD Department of Public Safety and Correctional Services)
- 384 Talbot Residences on Parole or Probation. (July 2016 MD Department of Public Safety and Correctional Services)
- The average daily census at Talbot County Department of Corrections is 58-60.
- Nationally 52% of inmates (51% of men and 62% of women) are parents. (BJS)
- In FY 14 and FY 15, 7%, 2 and 1 respectively, TCDSS Family Preservation/Consolidated Services cases involved an incarcerated parent.

Disconnect Youth

Age 16-24 Neither in school nor working

FY 17 – Concern
FY 18 – Concern
FY19 - Concern

Disconnected Youth



Youth Employment

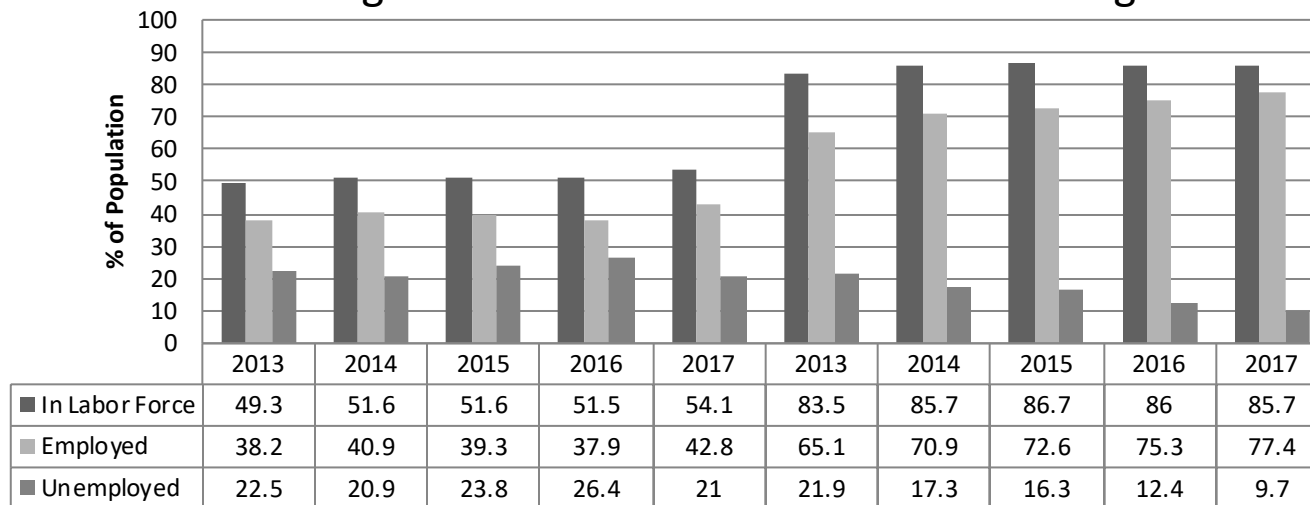
FY 17 – Monitor

FY 18 – Monitor

FY19- Monitor

Talbot Youth Employment Youth (16-24) Employment Status Age 16-19

Age 20-24



Source: US Census Bureau, ACS, 5 year Estimates, 2012-2017

Youth Population	2013	2014	2015	2016	2017
16-19	1,745	1,615	1,570	1,548	1,550
20-24	1,747	1,853	1,814	1,795	1,705

Source: US Census, ACS, 5 yr Estimate, Employment

Youth Employment

	2014		2015		2016		2017	
16-19	Talb	MD	Talb	MD	Talb	MD	Tal	MD
In Labor Force	52%	39%	52%	38%	52%	38%	54%	38%
Employed	41%	29%	39%	29%	38%	29%	43%	30%
Unemployed	21%	26%	24%	23%	26%	21%	21%	20%
20-24	Talb	MD	Talb	MD	Talb	MD		
In Labor Force	86%	76%	87%	75%	86%	75%	86%	75%
Employed	71%	63%	73%	63%	75%	64%	77%	65%
Unemployed	17%	15%	16%	14%	12%	13%	10%	12%

Source: US Census, ACS, 5 yr Estimate, Employment

Race (All ages in workforce) Talbot	Unemployment rate		
	2015	2016	2017
White	6.1%	5.5%	3.8%
Black	8%	9.1%	7.1%
Two or More races	19.1%	9.3%	18%
Latino	6.4%	1.0%	.9%
Other	8.2%	8.4%	4.3%

Source: US Census Bureau, ACS, 5 yr Estimates, Employment

Talbot County Census data from **2017** shows **14%** of individuals employed part-time lived below the poverty level, while only **2.6%** of individuals employed full-time were considered below poverty level. This trend is reflected across the country. (US Census, ACS **2017**, 5 year estimates)

Indicator: High School Dropout Rate

FY 13 – Positive Progress

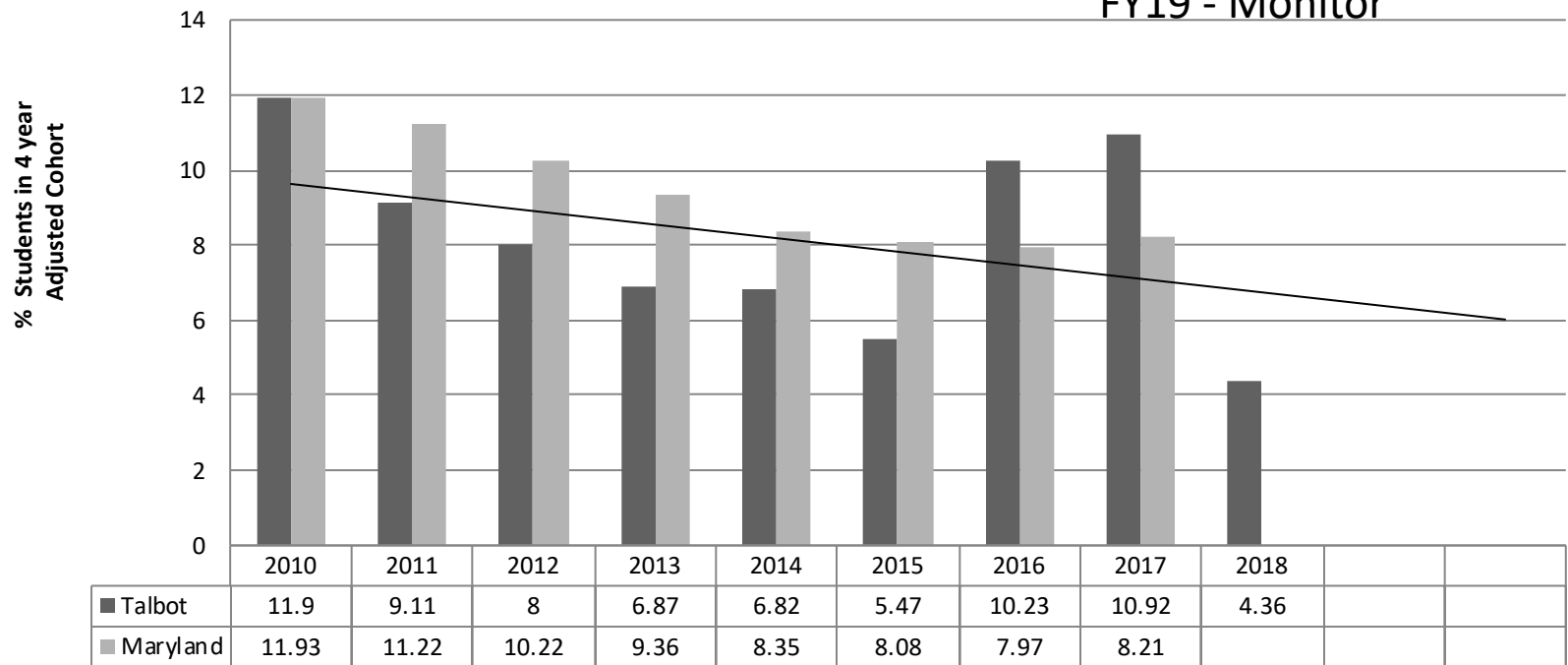
FY 16 –Positive Progress

FY 17 – Concern

FY 18 – Concern

FY19 - Monitor

High School Drop Out Rate



Source: MSDE, 2018 Unofficial data provided by TCPS Student Services

High School Drop Out Data

Graduation Year	# of Dropouts	# Students in Class/Cohort	Dropout Rate
2013	25	364	6.87%
3014	24	352	6.82%
2015	17	311	5.47%
2016	36	352	10.23%
2017	39	357	10.92%
2018	15		4.36%

Source: MSDE, 2018 Unofficial data provided by TCPS Student Services

High School Dropout Rate

Talbot Dropout Data by Subgroup						
Subgroup	FY 13	FY 14	FY 15	FY 16	FY 17	FY18
Hispanic/ Latino	17% (4)	8% (2)	14.29% (3)	29.03% (9)	35.09% (20)	10.87% (5)
Limited English Proficient	33.33% (2)	100% (2)		70% (7)	63.33% (19)	45.455% (5)
FARMS	15.13% (18) 72% of all dropouts	12.28% (14) 58% of all dropouts	9.68% (9) 53% of all dropouts	17.36% (21) 58% of all dropouts	19.38% (25) 64% of all dropouts	8.929% (10) 67% of all dropouts
Male FARMS	19.67% (12)	14.55% (8)	12.77% (6)	24.59%(15)	28.36% (19)	10.398% (7)
Female FARMS	10.34% (6)	10.17% (6)	6.52%(3)	10% (6)	9.68% (6)	6.25% (3)

Source: MSDE, 2018 Unofficial data provided by TCPS Student Services 2/19

Graduation Rates 2018

	2018	2017	2016	2015
Talbot County	93.9%	87.11%	85.51%	93.25%
Black		87.23%	78.85%	93.48%
Hispanic/Latino		61.40%	64.52%	80.95%
White		92.95%	89.68%	95.02%
Special Education		69.57%	60%	80.95%
FARMS		77.52%	74.38%	88.17%

Source: Talbot County Public Schools, Unofficial 2018 data provided by Student Services 2/19

Indicator: Truancy

FY 13 – Positive Progress

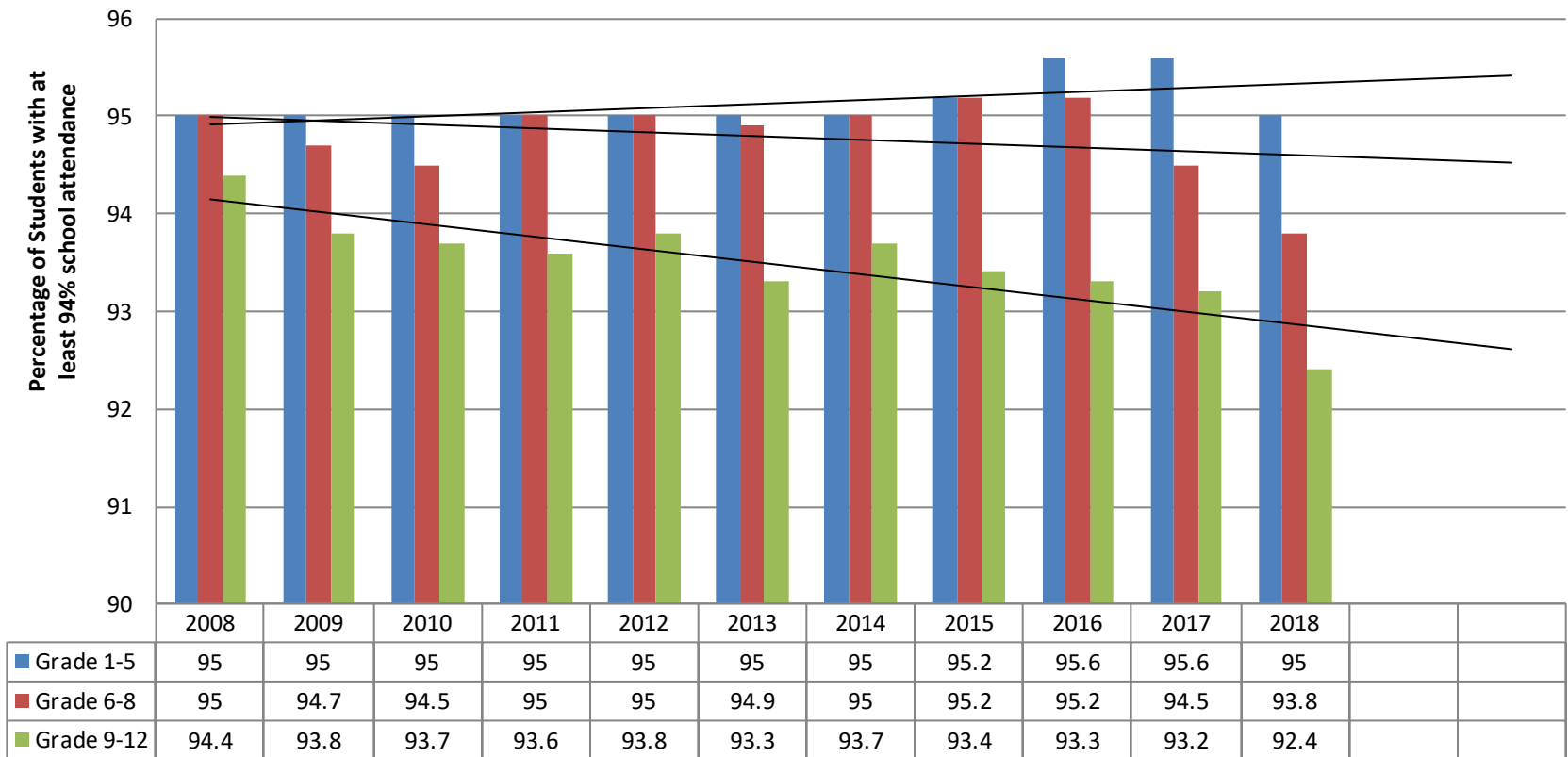
FY 16 – Positive Progress

FY 17- Positive Progress

FY 18 - Positive Progress

FY19- Positive Progress

Attendance Rate
Talbot County Public Schools



Source: MSDE

Indicator: Homelessness

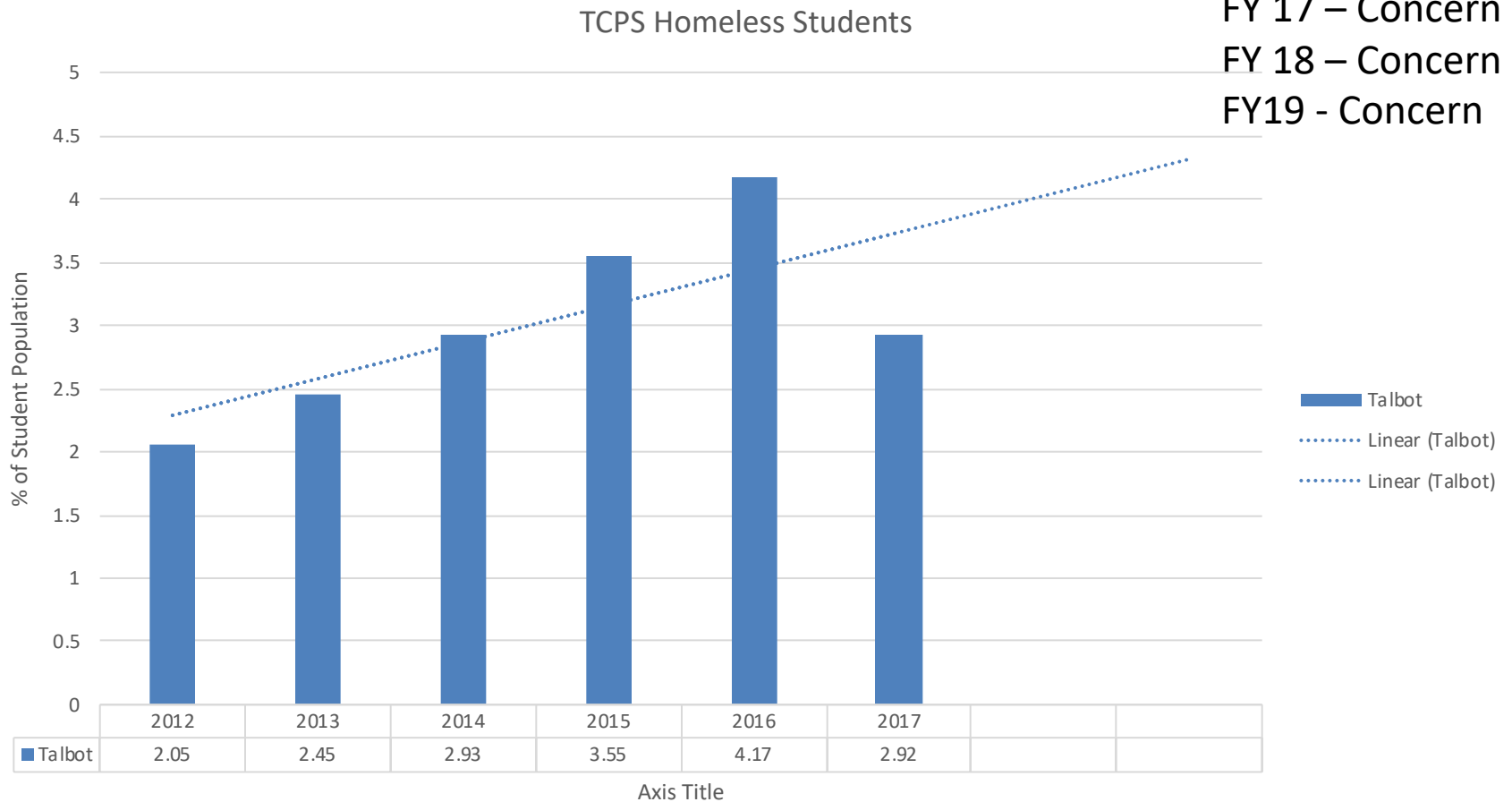
FY 13 – Monitor

FY 16 – Concern

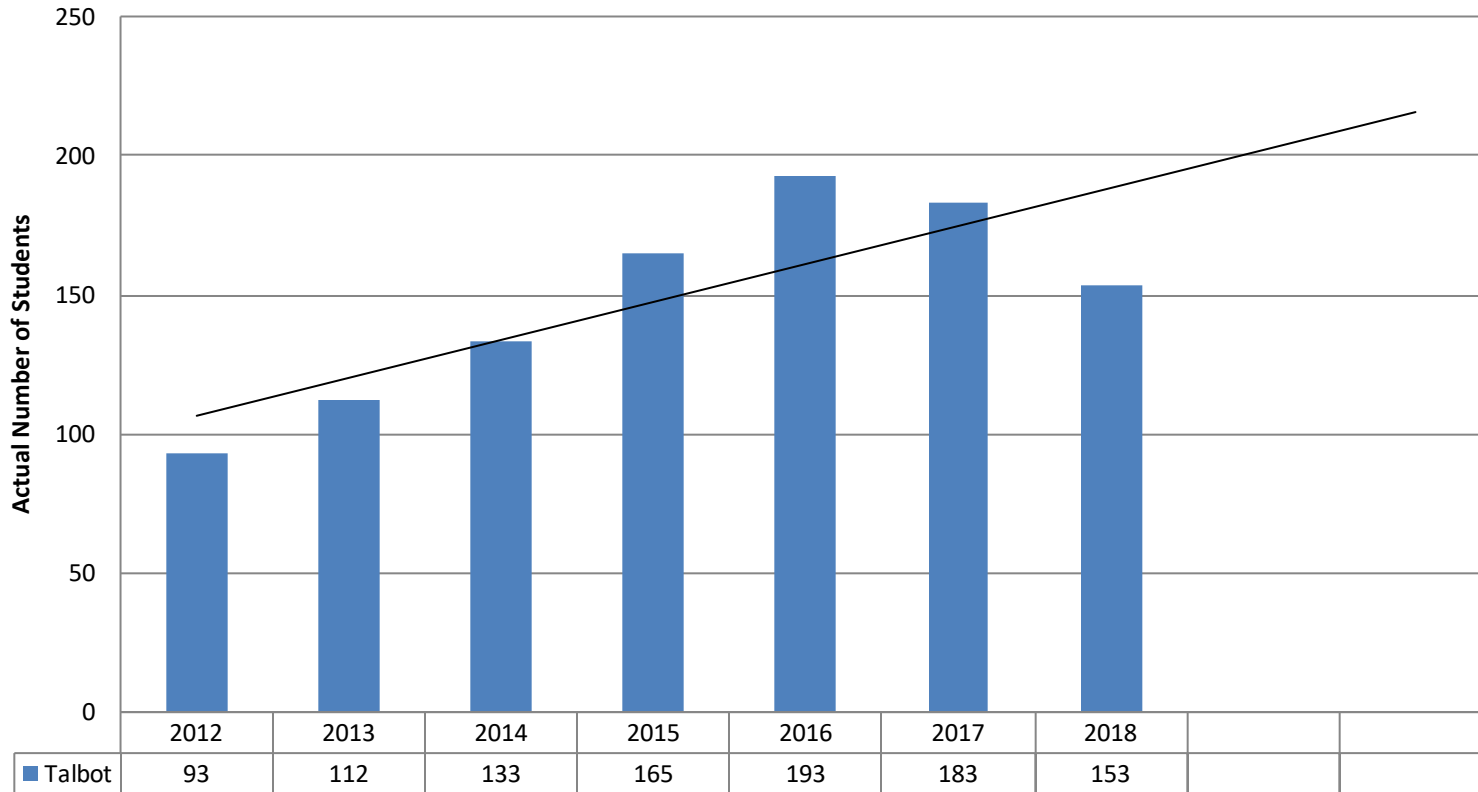
FY 17 – Concern

FY 18 – Concern

FY19 - Concern



TCPS Homeless Students



Source: TCPS, Data details provided by Student Service 2/19

FY 17 – 2.7% of total TCPS population Percent by race of total homeless Hispanic – 51.2%, AA – 25%, White – 18.6%, Multi-race – 4.8%

FY 18 – 3.3% of total TCPS population Percent by race of total homeless Hispanic – 48%, AA – 25%, White – 22%, Mutli-race – 6%

Indicator: Births to Adolescents

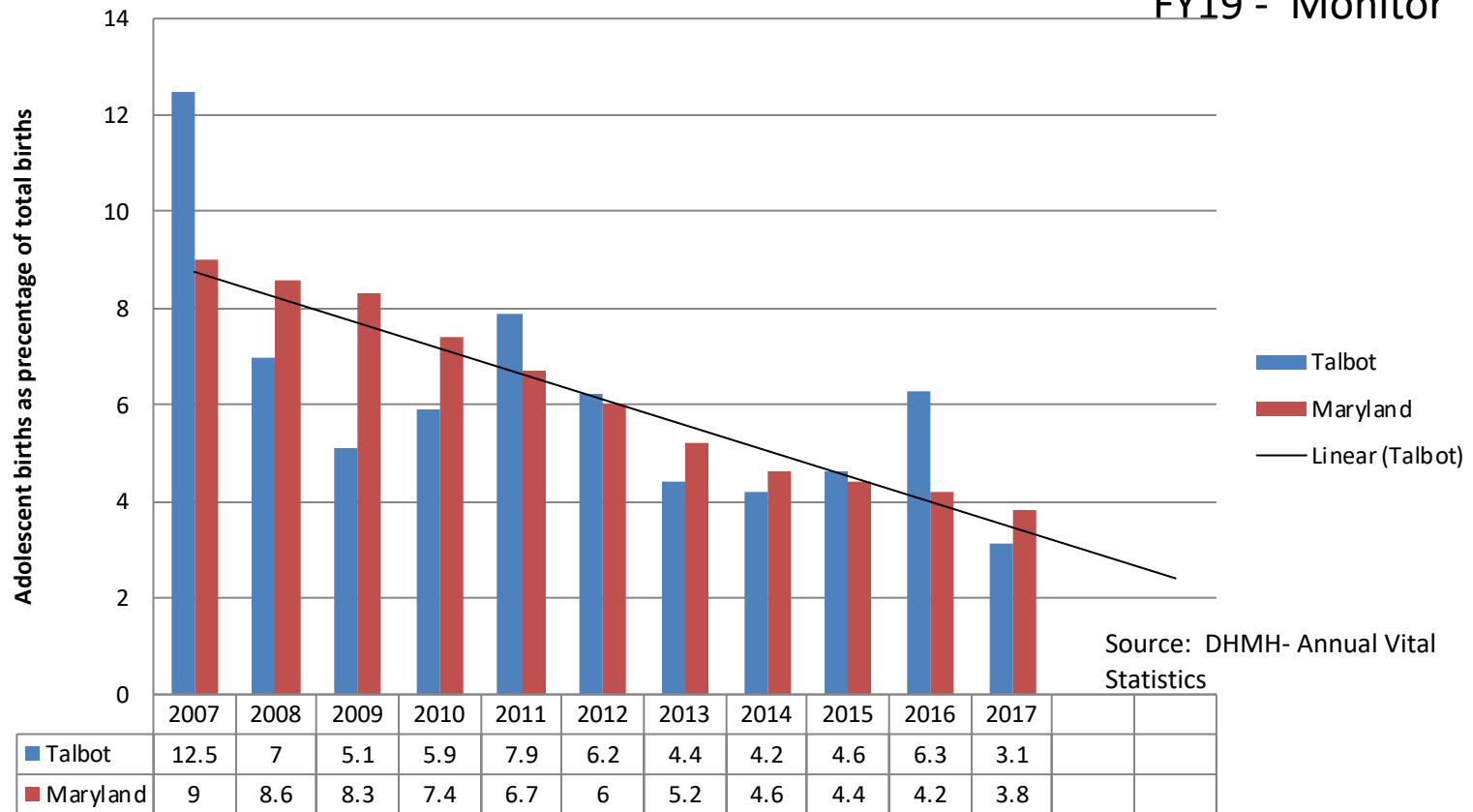
FY 13 – Monitor

FY 16 – Positive Progress

FY 18- Monitor

FY19 - Monitor

Births to Adolescents (Ages 10-19)



Source: MD Department of Health Annual Vital Statistics 2017

Talbot Births to Adolescents

Actual Numbers

Year	<age 15	Age 15-17	Age 18-19	Total
FY 12	1	5	14	20
FY 13	0	6	9	15
FY 14	0	2	12	14
FY 15	1	6	8	15
FY 16	0	7	14	21
FY 17	1	2	8	11

Source: MD Department of Health Annual Vital Statistics 2016

FY 17 – Births by race of mother – 54.5% White, 36.4% Black, 36.4% Hispanic

Indicator: Substance Use

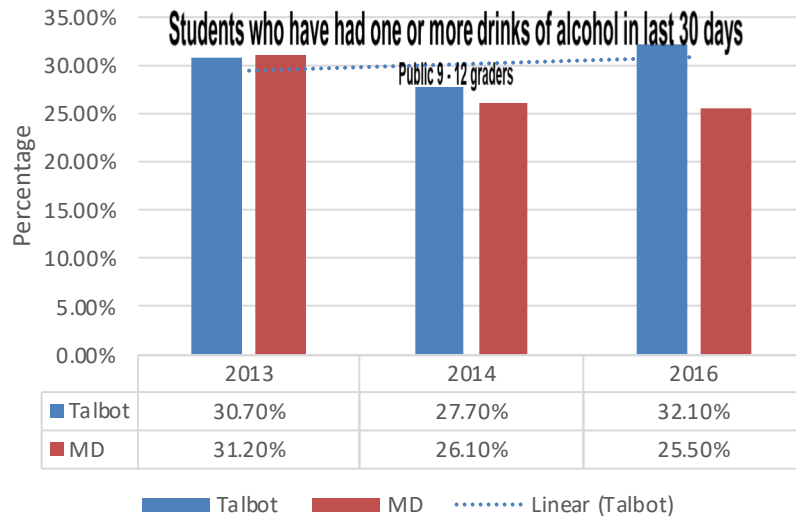
FY 13 – Concern

FY 16 – Concern

FY 17 – Concern

FY 18 – Concern

FY19 - Concern



YRBS, Middle School

Ever had a drink of alcohol

2013 N= 606 22.3%= 135 students

2014 N=666 17%= 113 students

2016 N=533 22.7%=121 students

Data Source: YRBS

Actual Number

2013 N=770 30.7% = 236 students

2014 N=875 27.7%=242

2016 N=1,026 32.1%=329

Data Source: YRBS

Actual Number

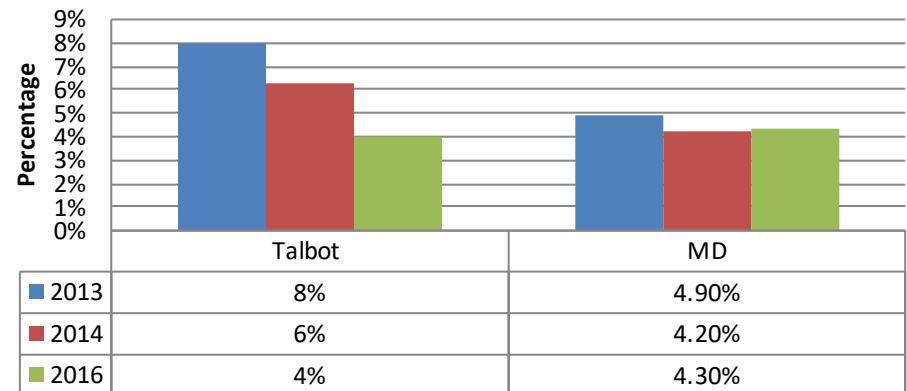
2013 N=824 8%=66 students

2014 N=929 6.3%=58

2016 N=1,088 4%=44

Students who have used heroin at least once in lifetime

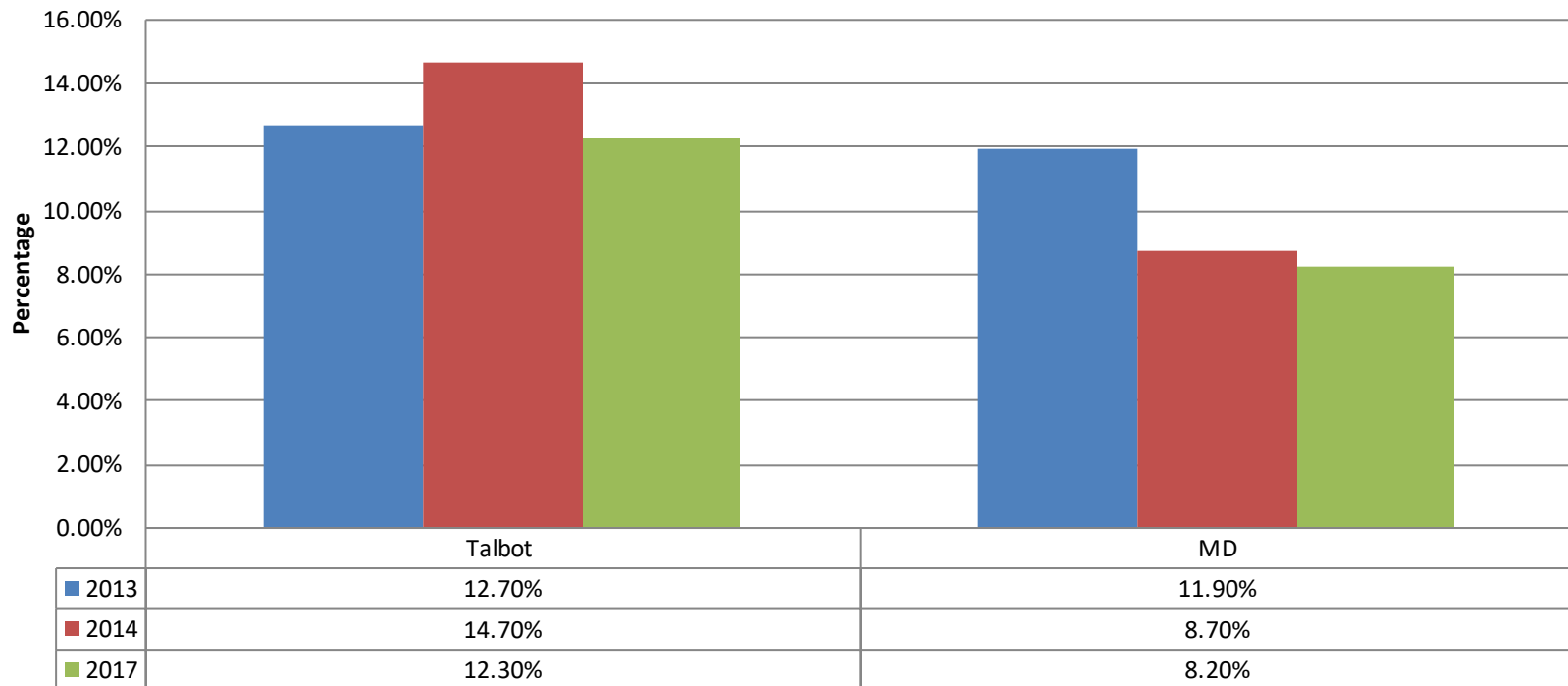
Public 9 - 12 graders



Indicator: Tobacco Use Smoking

FY 13 – Monitor
FY 16 – Monitor
FY 17 – Monitor
FY 18 – Concern
FY19 - Concern

**Student who have smoked tobacco at least once in last 30 days,
public 9-12 graders**



Data Source: YRBS, QN 32, Actual

2013 N=771 16%=123

2014 N=929 14.7%=136

2016 N 1,100 12.3%=114

YRBS Middle School, QN19

2013 N=636 3.6%=23 students

2014 N= 697 2.4%=17 students

2016 N=558 1.9%=11

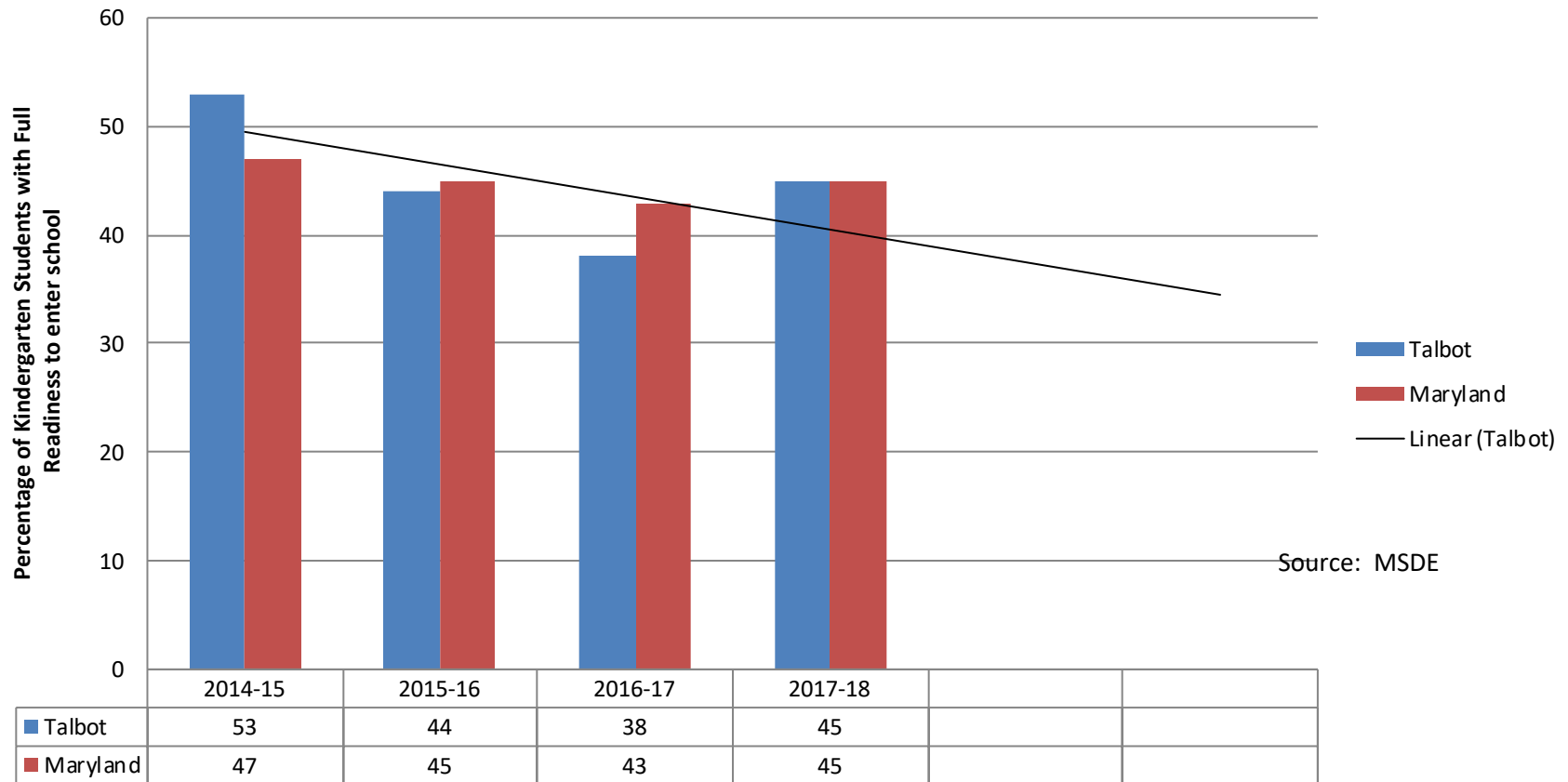
Indicator: Kindergarten Assessment

FY 16 –Baseline

FY 18- Concern

FY19 - Concern

Kindergarten Readiness



PARCC Test

FY 16 – Measure Changed

FY 17 – New Data

FY 18- Concern

FY 19 - Concern

Students Meeting or Exceeding Expectations

Grade	Language Arts			Math		
	2016	2017	2018	2016	2017	2018
3 rd	37.7%	41%	51%	42.9%	42%	46%
4 th	46.5%	44%	47%	39.5%	33%	42%
5 th	48.4%	50%	47%	41.6%	44%	40%
6 th	24.4%	36%	33%	24.4%	26%	22%
7 th	41.8%	47%	43%	28.3%	21%	29%
8 th	42.6%	33%	33%	11.3%	7%	<5%

Source: MSDE Talbot County Report Card

High School PARCC

FY 16 – New Measure

FY 17 – New Data

FY 18 – Concern

FY19 - Concern

Test	Meeting or Exceeding Proficiencies		
	2016	2017	2018
9 th Grade English	Too few	Too few	Too few
10 th Grade English	51.3%	55%	52%
11 th Grade English	Too few	Too few	Too few
Algebra I	38.2%	36.9%	29%
Algebra II	Too Few	40.3%	36%
Geometry	Too few	Too few	Too few

Source: MSDE Talbot County Report Card

Indicator: High School Program Completion

FY 13 – Positive Progress
 FY 16-17 – More Information
 FY 18 – More Info Needed
 FY19 - Monitor

Completion Category:	2013	2014	2015		2016		2017		2018
			Tal	MD	Tal	MD	Tal	MD	TAL**
a. Univ MD Course Requirements	32.8%	26.1%	36.7%	59%	30.1%	51.5%	53.2%	51.5%	83
b. Career & Tech Ed Program Requirements	29.0%	26.7%	27.3%	8.2%	28.8%	9%	23.6%	9%	98
c. Both Univ & Career / Tech Requirements	23.8%	30.9%	11.4%	12.9%	21.8%	13.5%	19.4%	13.5%	91
d. Rigorous High School Program Indicator	*	27.9%	26.3%	23.5%	31.1%	28.5%	33.9%	28.5%	105
e. At least one of the above categories	85.6%	84.1%	75.4%	80.5%	80.8%	75.9%	78.8%	75.9%	1

Educational Attainment

Talbot Population age 25 and older

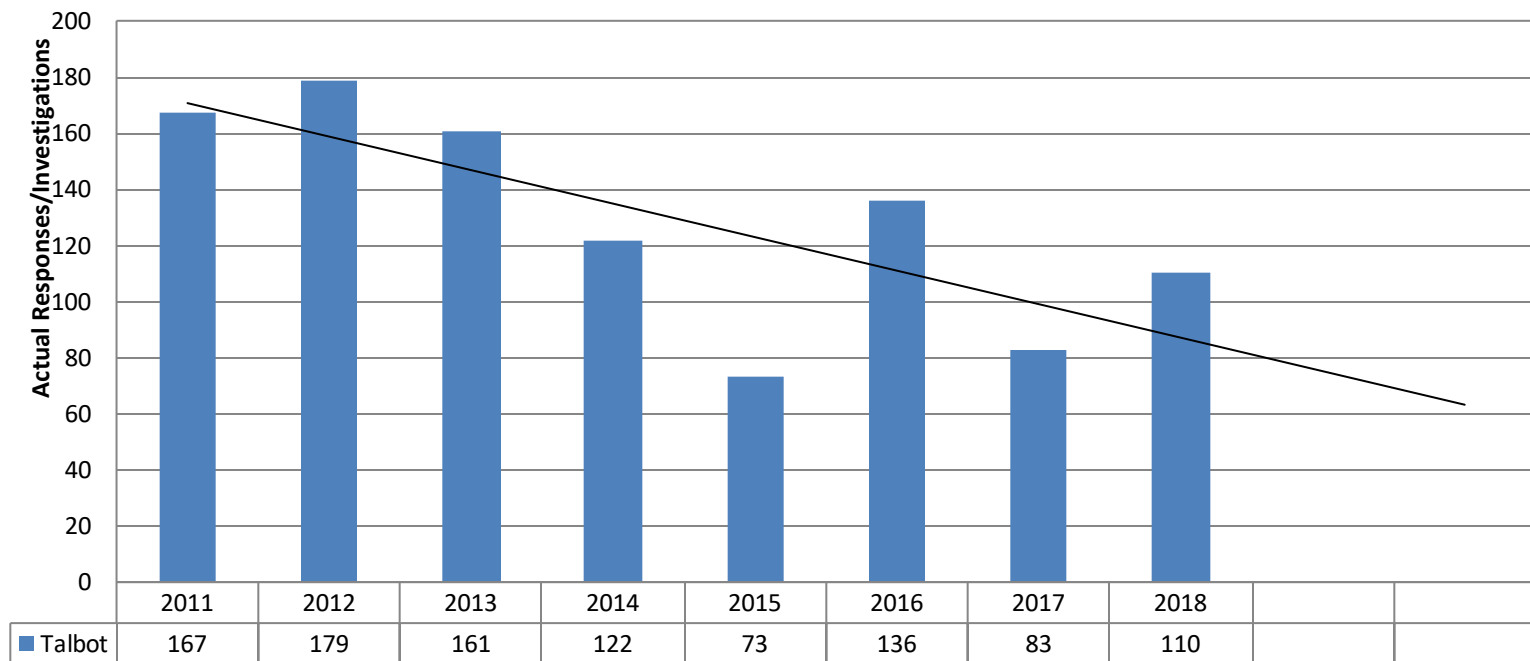
	2013	2015	2016	2017
< 9 th grade	4%	4.4%	3.8%	3.5%
9 th -12 th grade (no diploma)	7%	7.1%	7.1%	7%
HS Grad/GED	28.4%	27.9%	26.2%	25.7%
Some college – No degree	20.4%	20.2%	20.6%	19.4%
 Talbot Population < AA degree	 59.8%	 59.6%	 57.7%	 55.6%
MD < AA degree	56.8%	62.2%	55.2%	54.4%

Source: US Census American Community Survey, 5 year estimates

Indicator: Maltreatment

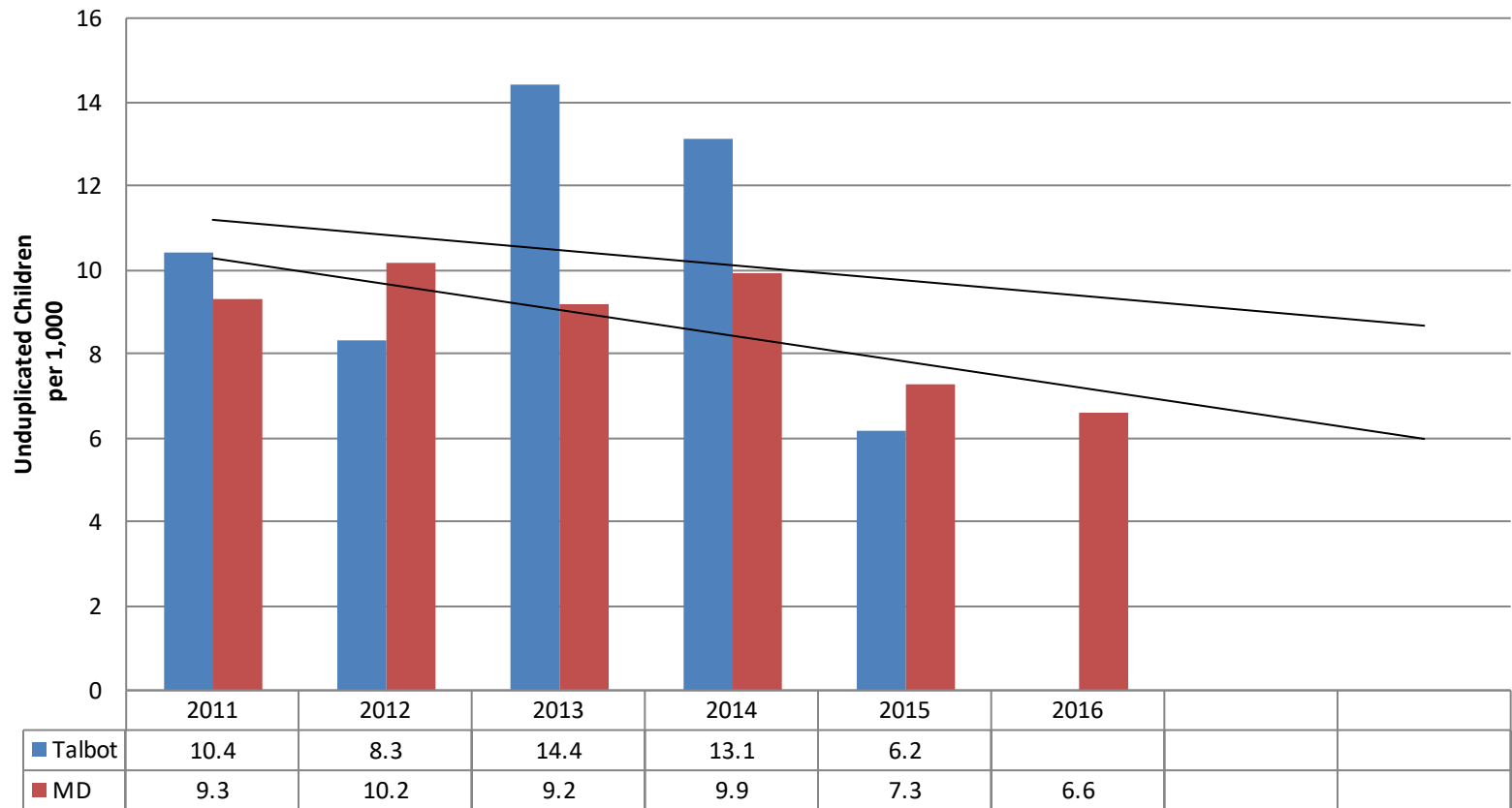
FY 13 – Monitor
FY 16 – no data
FY 17 - Monitor
FY 18 – Monitor
FY19 - Concern

Talbot Child Protective Services Responses



Source: Talbot County Department of Social Services

**Rate of Unduplicated Children with Indicated/ Unsubstantiated Child Abuse/
Neglect Findings, Ages 0-17, Maryland (rate per 1,000)**



Indicator: Out-of-Home Placement

FY 13 – Monitor

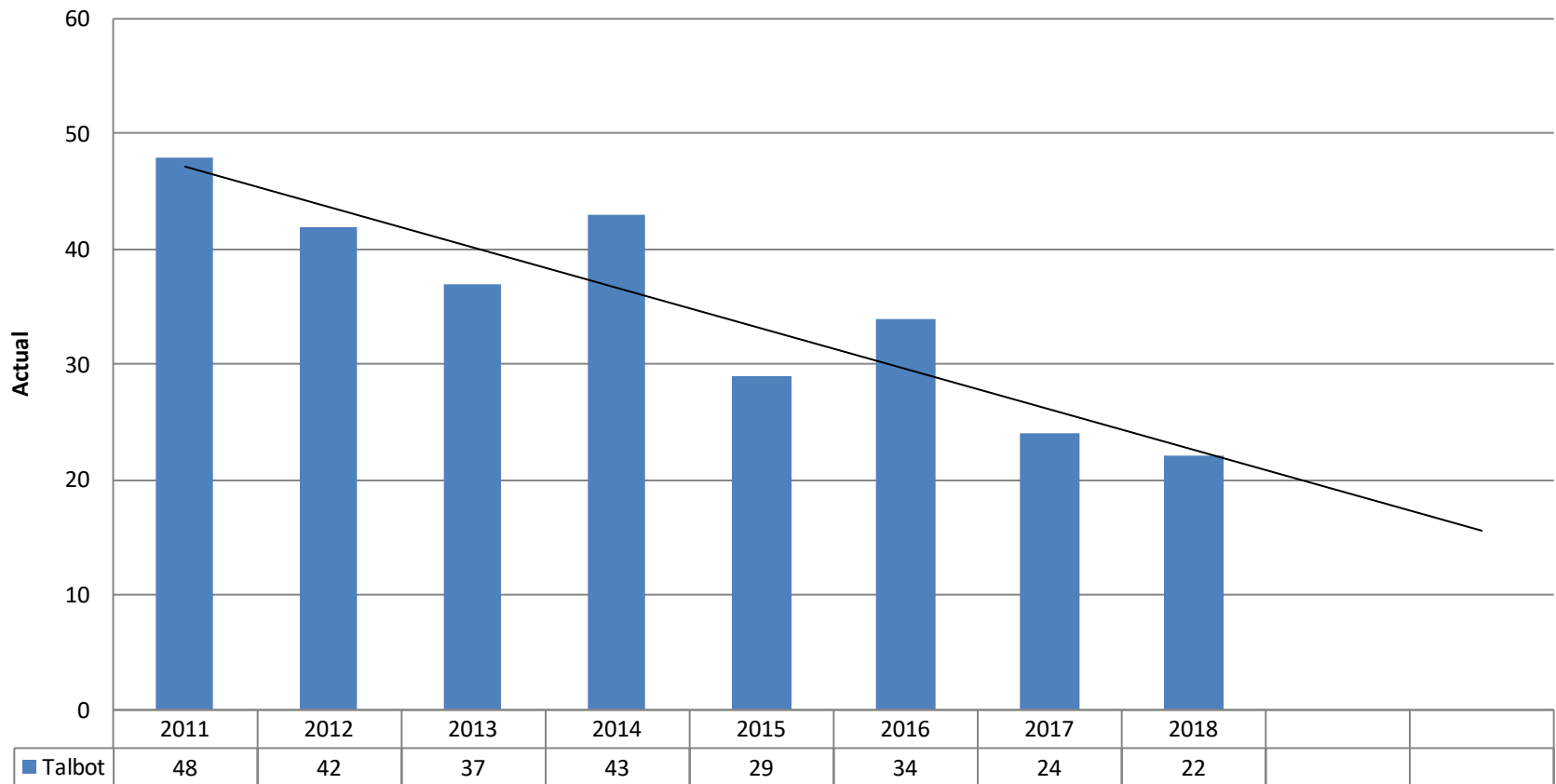
FY 16 –Monitor

FY 17 – Monitor

FY 18 – Monitor

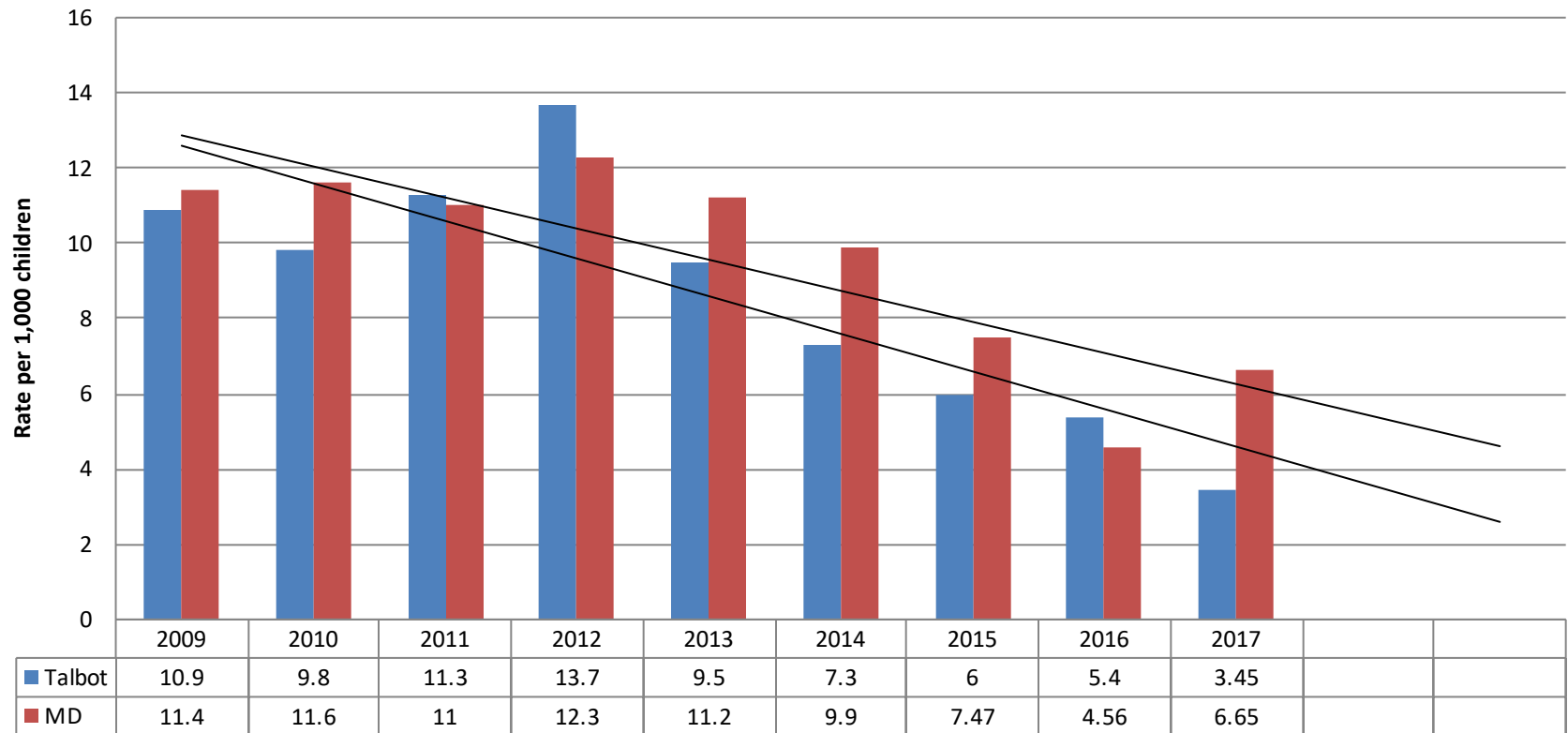
FY19 - Monitor

Talbot Out of Home Placement



Source: Talbot County Department of Social Services

Out of Home Placements Rate per 1,000 children



Source: DHR FY17 Out of Home
Placement Report Guide

Indicator: Bullying and Harassment

FY 13 – Concern

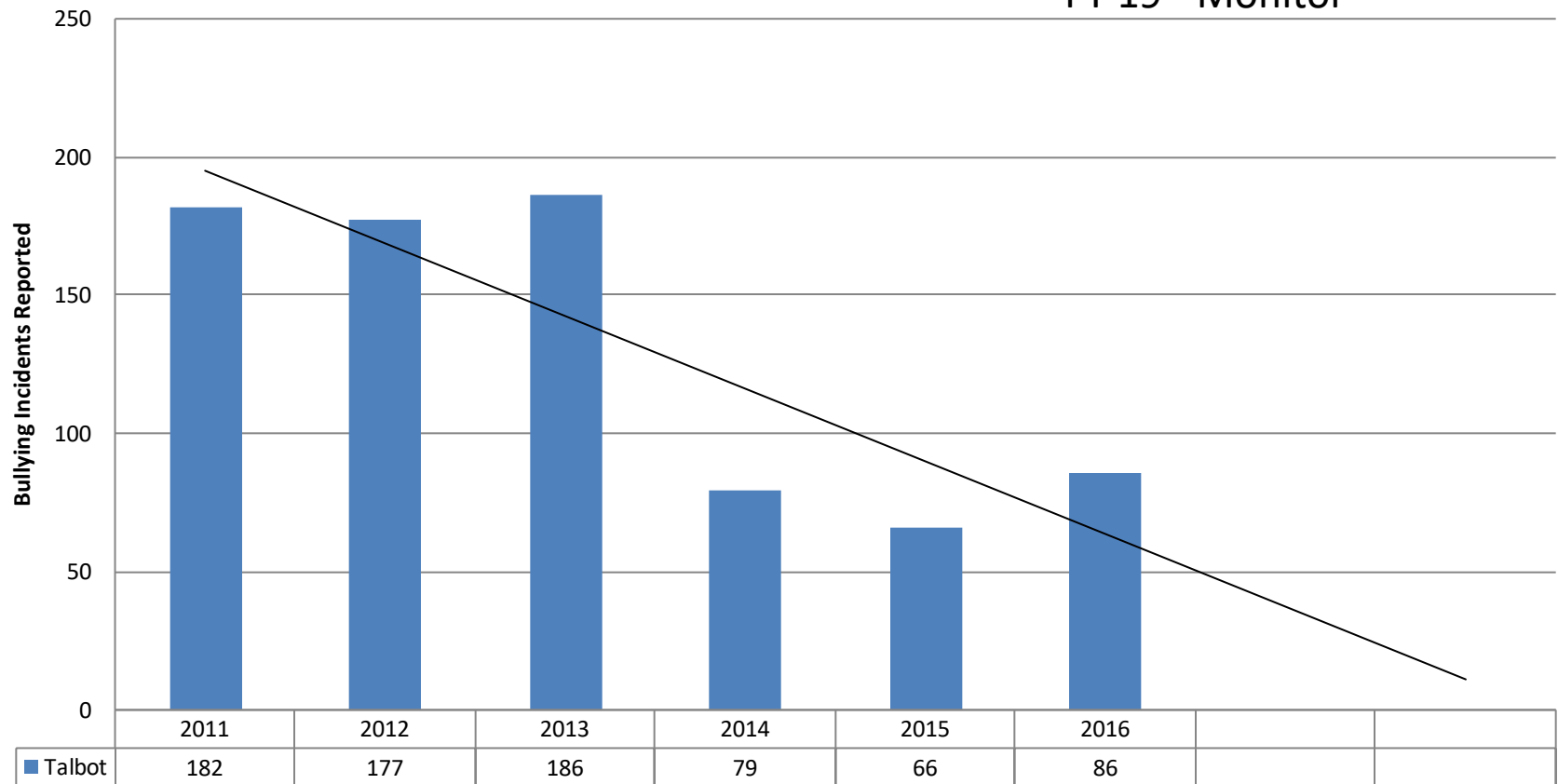
FY 16 – Positive Progress

FY 17- Positive Progress

FY 18 – Monitor

FY 19 - Monitor

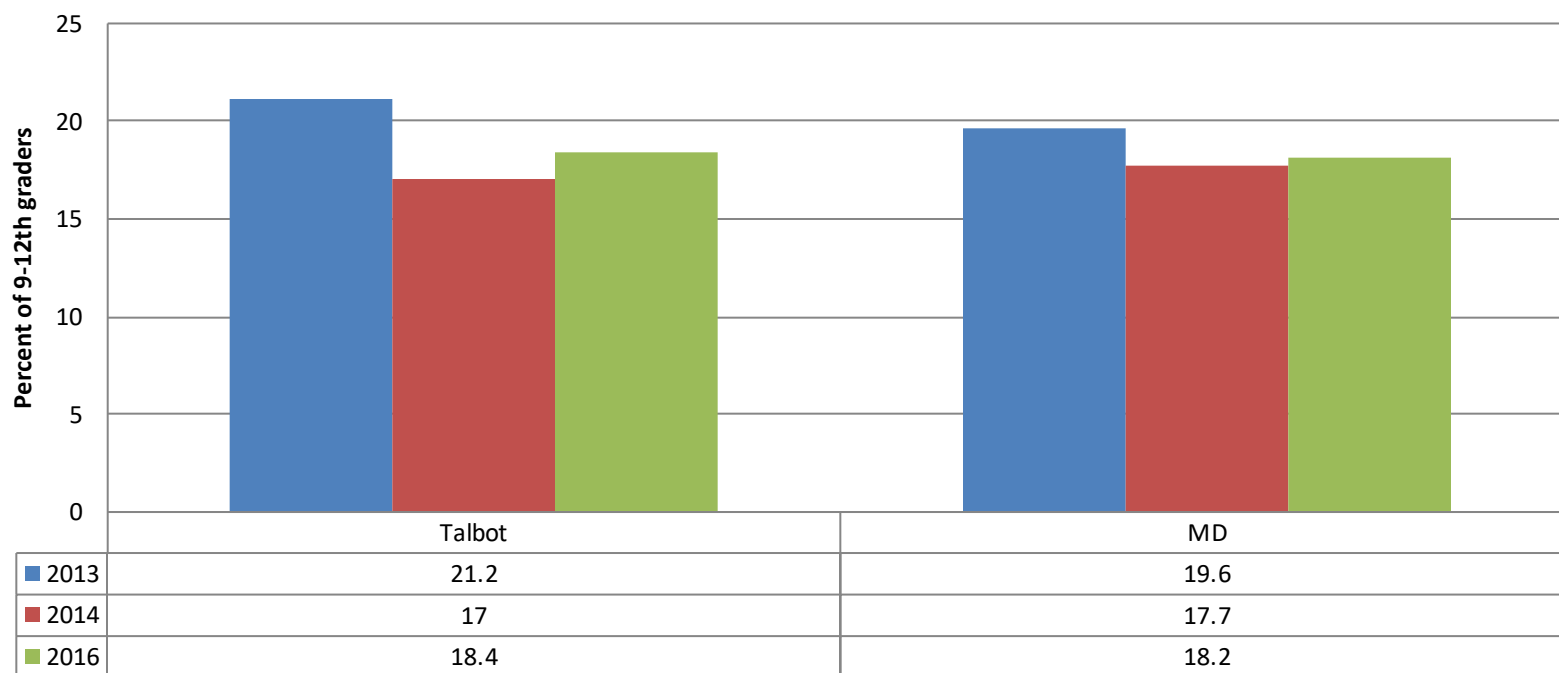
TCPS Bullying Incident Reports



Source: TCPS

Bullying

Students who report being bullied on school property in past 12 months



Source: YRBS, QN23, Actual

2013 N=826 21.2% = 175 students

2014 N=949 17%=161

2016 N=1,094 18.4%=201

Indicator: Juvenile Felony Offenses

FY 13 – Monitor

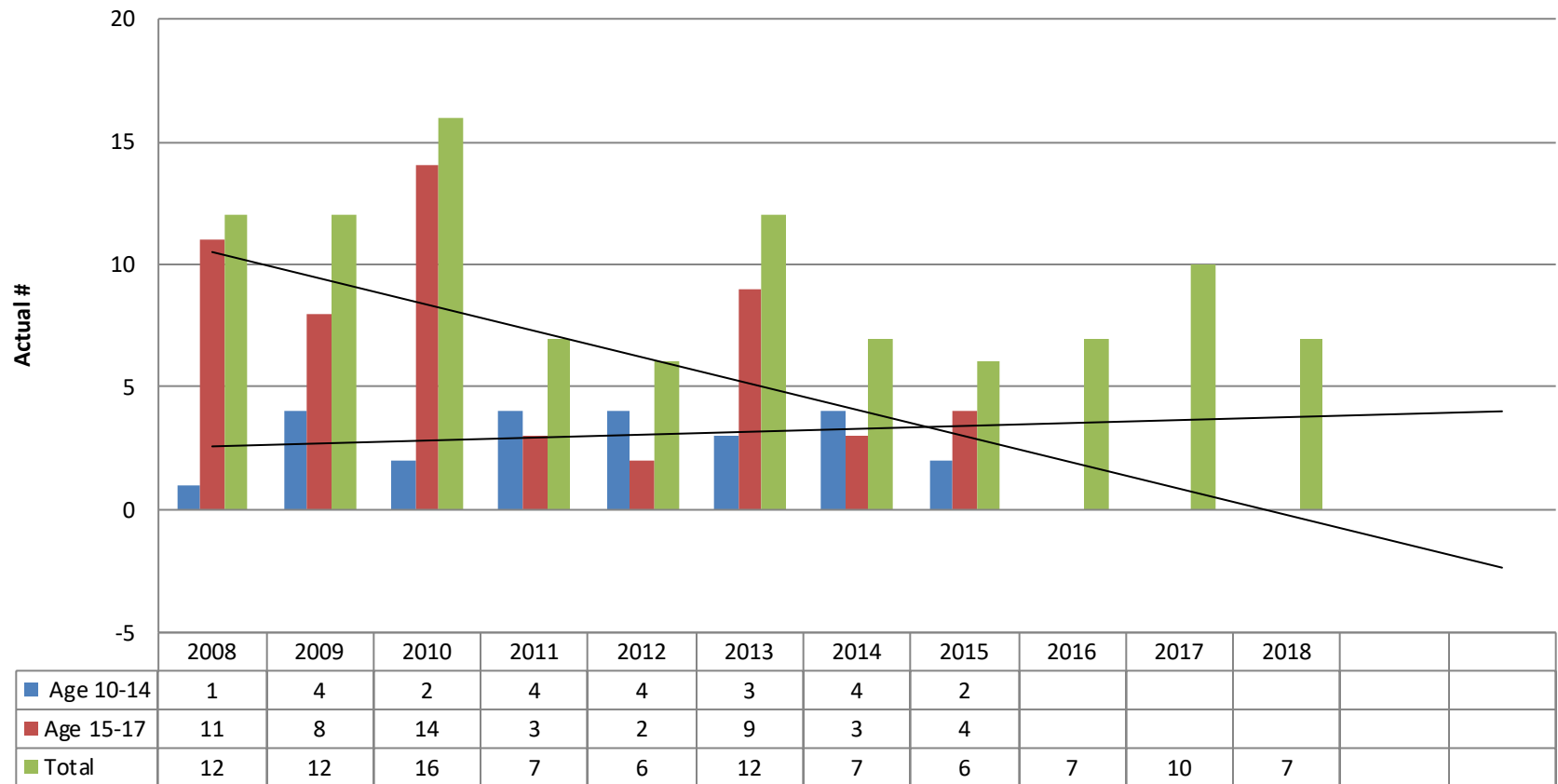
FY 16 – Positive Progress

FY 17 – Positive Progress

FY 18 – Monitor

FY19 -

Juvenile Violent Felony Complaints



Source: DJS Annual Statistical Report via
GOC

Indicator: Recidivism

FY 13 – Positive Progress

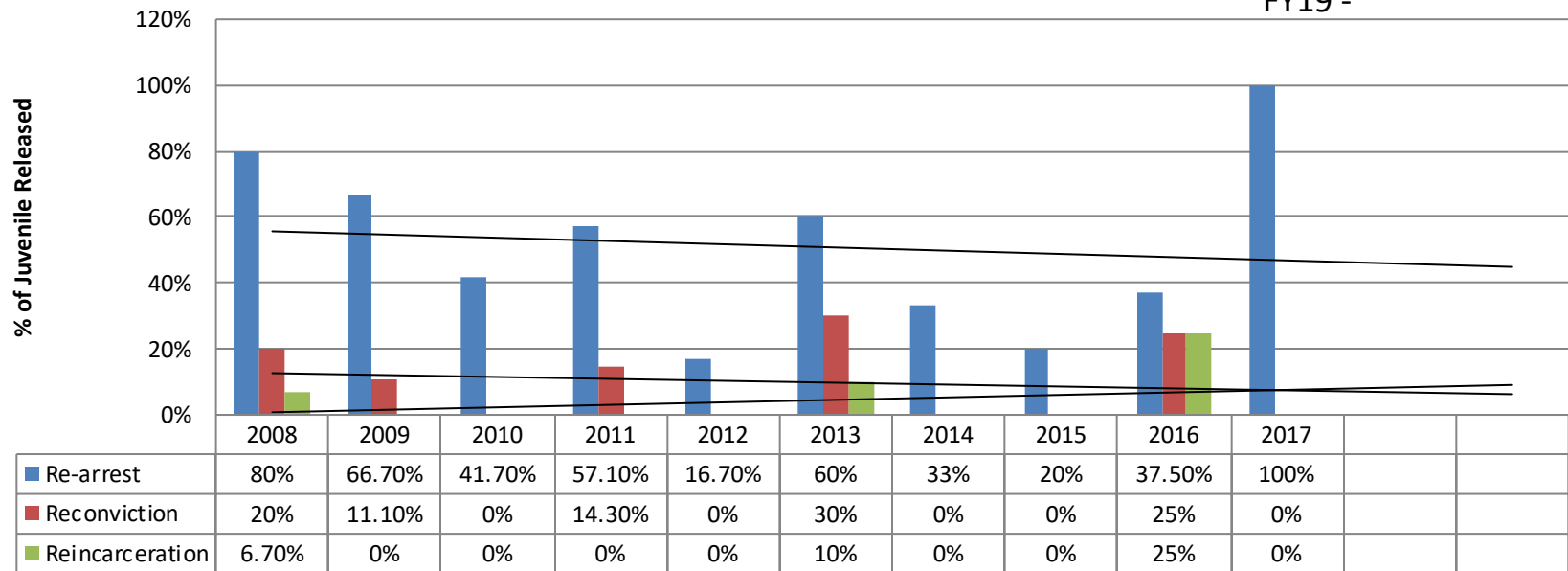
FY 16- Concern

FY 17- More Information

FY 18 – Monitor

FY19 -

Juvenile Recidivism



	2008	2009	2010	2011	2012	2013	2014	2015	2016	2017
# of Releases	15	18	12	7	6	10	3	5	8	3

Indicator: HS Completion of Students with Disabilities

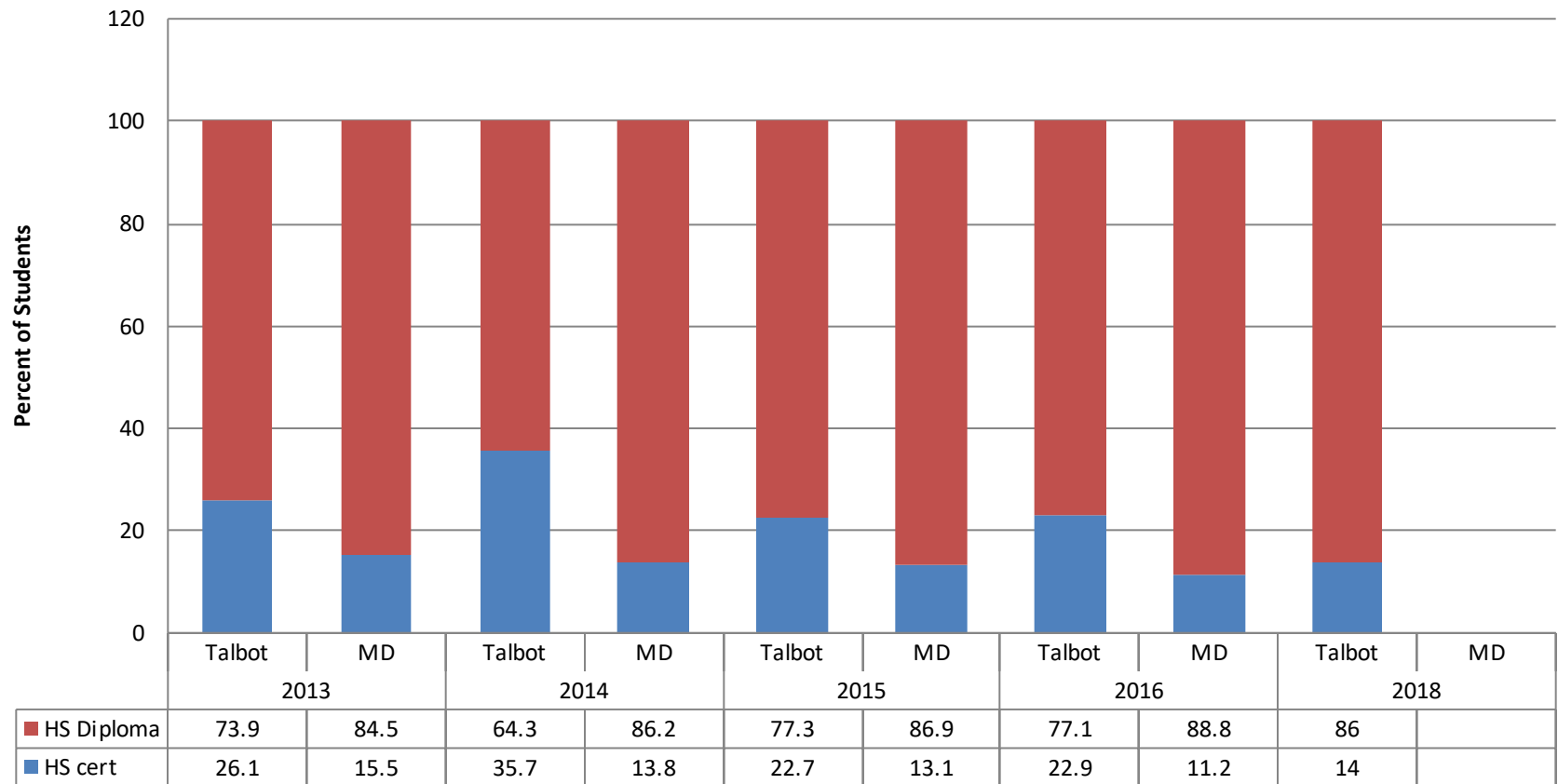
FY 13 – Positive Progress

FY 16- Positive Progress

FY 17- Positive Progress

FY 18 - Positive Progress

High School Completion by Special Education Students



Source: MSDE, TCPS Student Service
2/19 update

Indicator: Crime

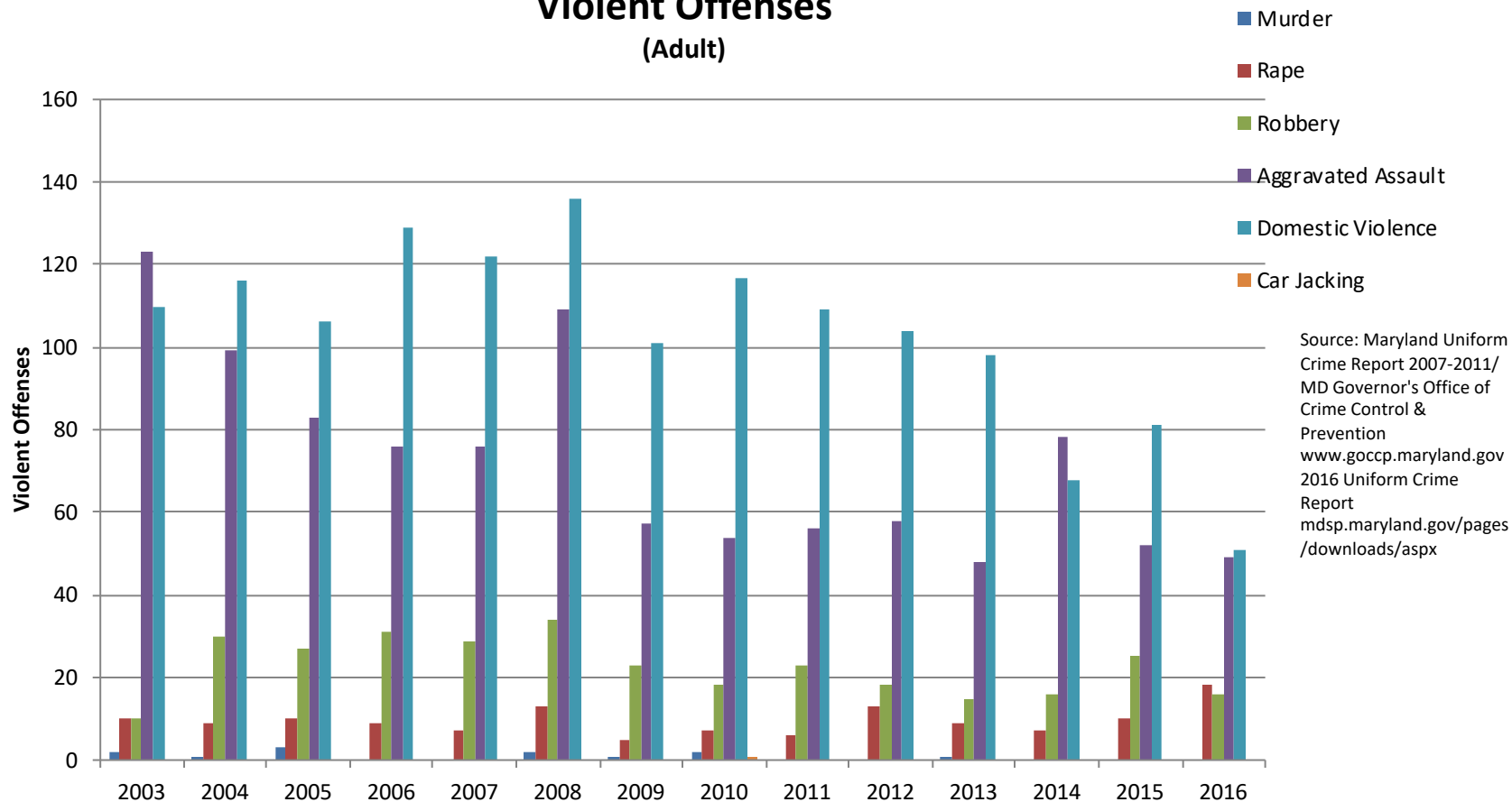
FY 13 – Monitor

FY 16-17 –Positive Progress

FY 18 – Monitor

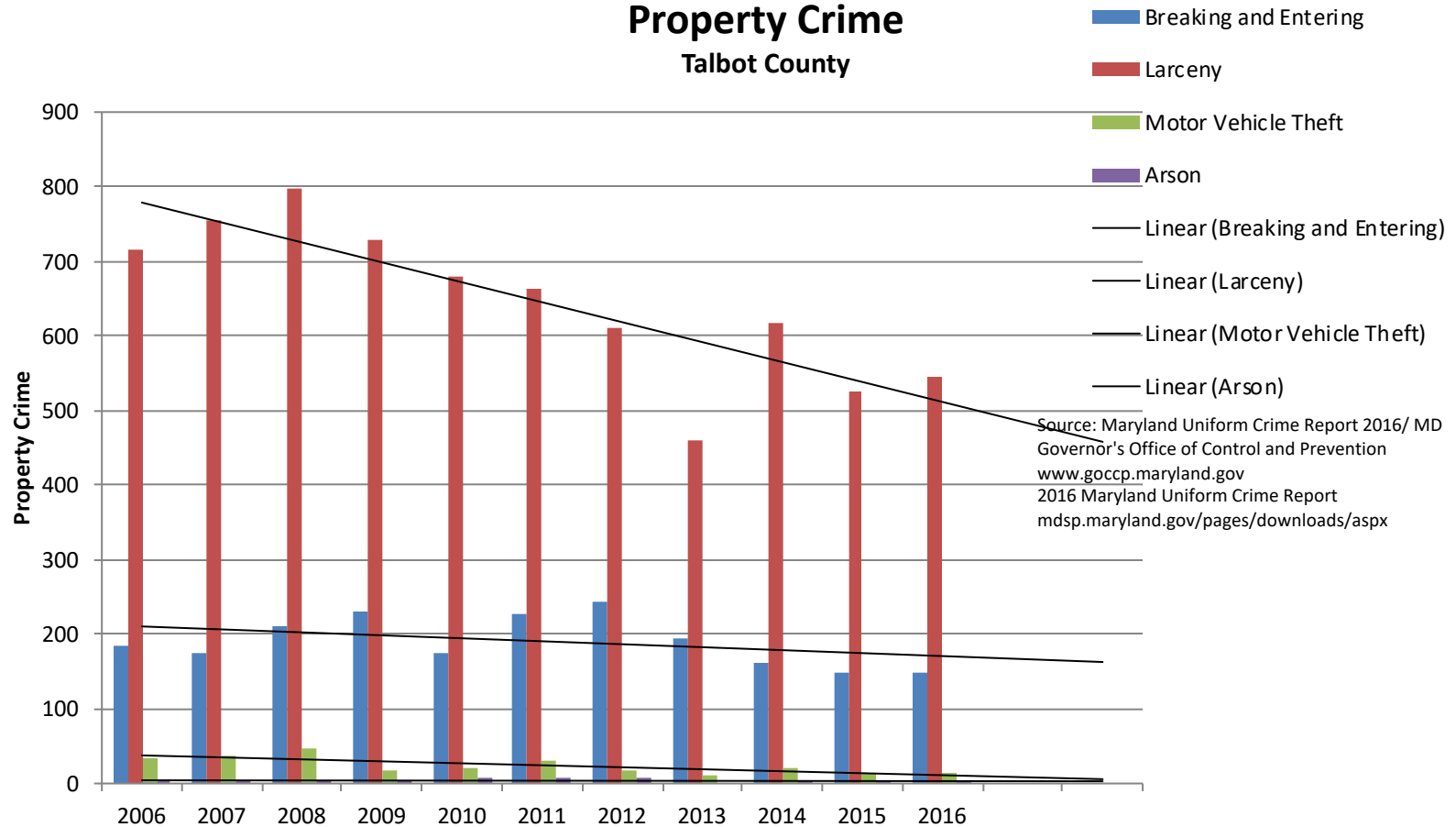
FY19 -

Violent Offenses (Adult)



Source: GOCCP/Uniform Crime Report,
2016

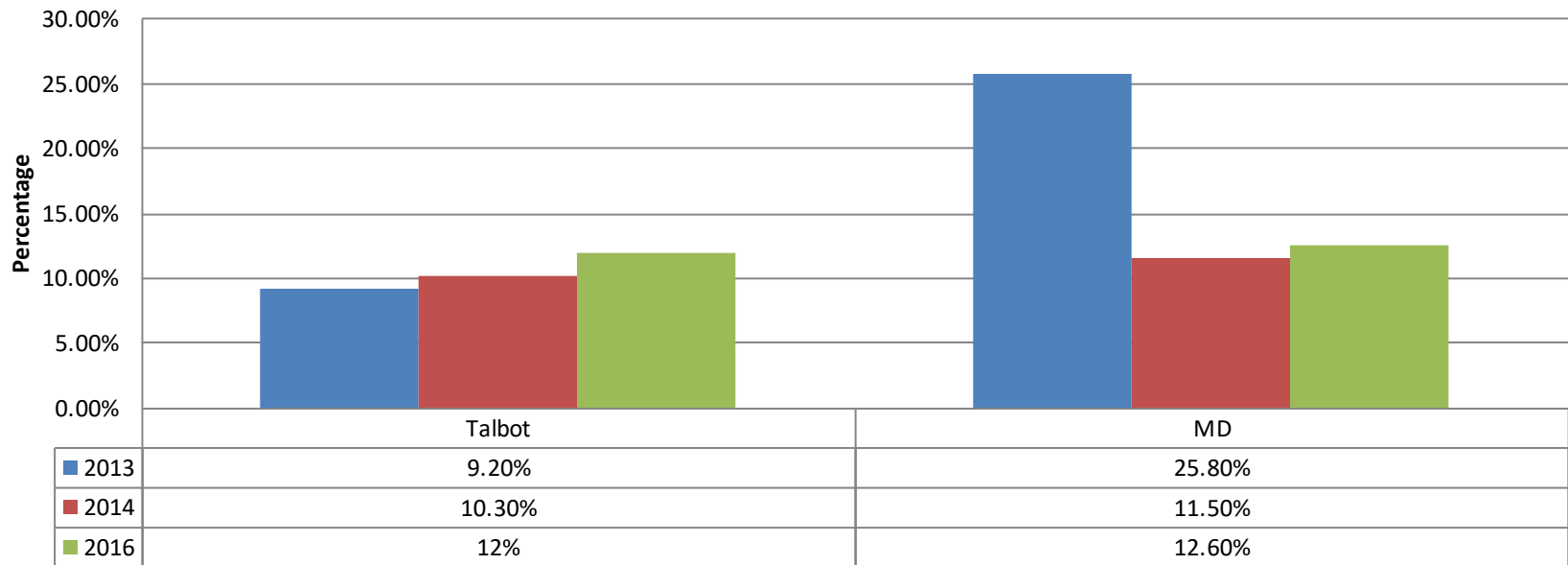
Property Crime Talbot County



Indicator: Obesity

FY 13 – Concern
FY 16 – Monitor
FY 17 – Monitor
FY 18 – Monitor
FY 19 -

Childhood Obesity 9-12 graders



Data Source: YRBS, QNOBESE
Calculated from Self Report of Height and Weight

Actual Numbers

2013 N= 745	9.2%= 69 Students
2014 N= 692	10.3%=90 Students
2016 N=986	12%=118 Students

Indicator: Health Insurance Coverage

FY 13 – Positive Progress

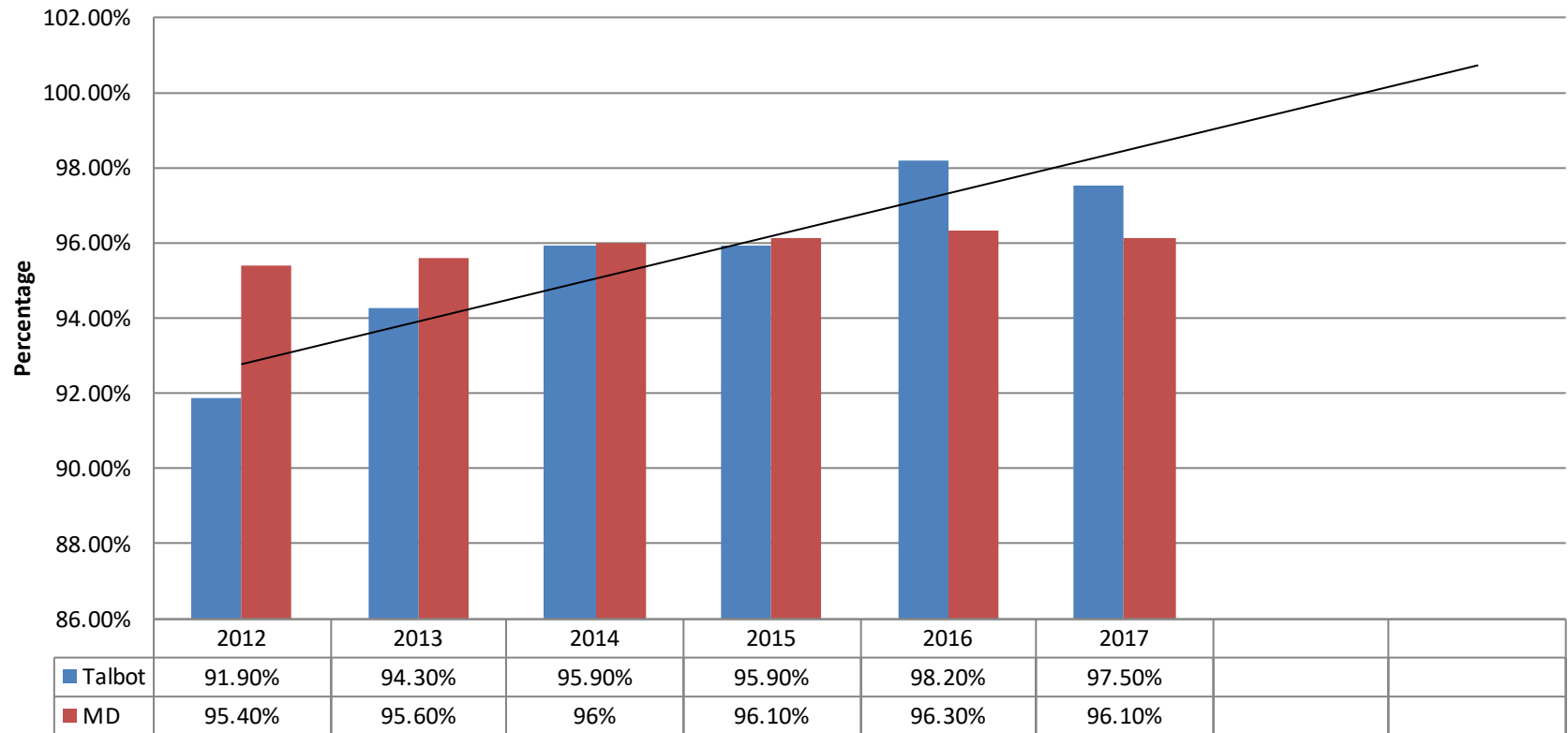
FY 16 – Positive Progress

FY 17 – Positive Progress

FY 18 – Positive Progress

FY19 -

Health Insurance Children, ages 0 to 18



Data Source: US Census, ACS, 2017 5 Yr Estimate

Indicator: Immunizations

FY 13 – Positive Progress

FY 16 –Positive Progress

FY 17- Positive Progress

FY 18 – Monitor

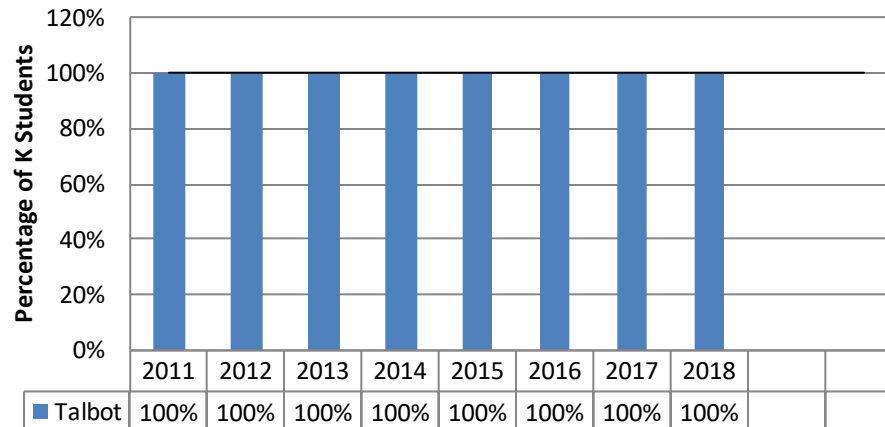
FY19 -

Estimated Vaccination Coverage Among Children Between the Ages of 19 Months - 35 Months, Survey Years 2002 - 2013v

	2006	2007	2008	2009	2010	2012	2013
MD	78.1%	91.3%	80.2%	84.0%	73.3%	73%	81.9%
US	76.9%	77.4%	76.1%	76%	74.9%	71.9%	77.7%

Talbot Students Fully Immunized upon Kindergarten Entry

Source: National Immunization
Survey



Source: TCHD

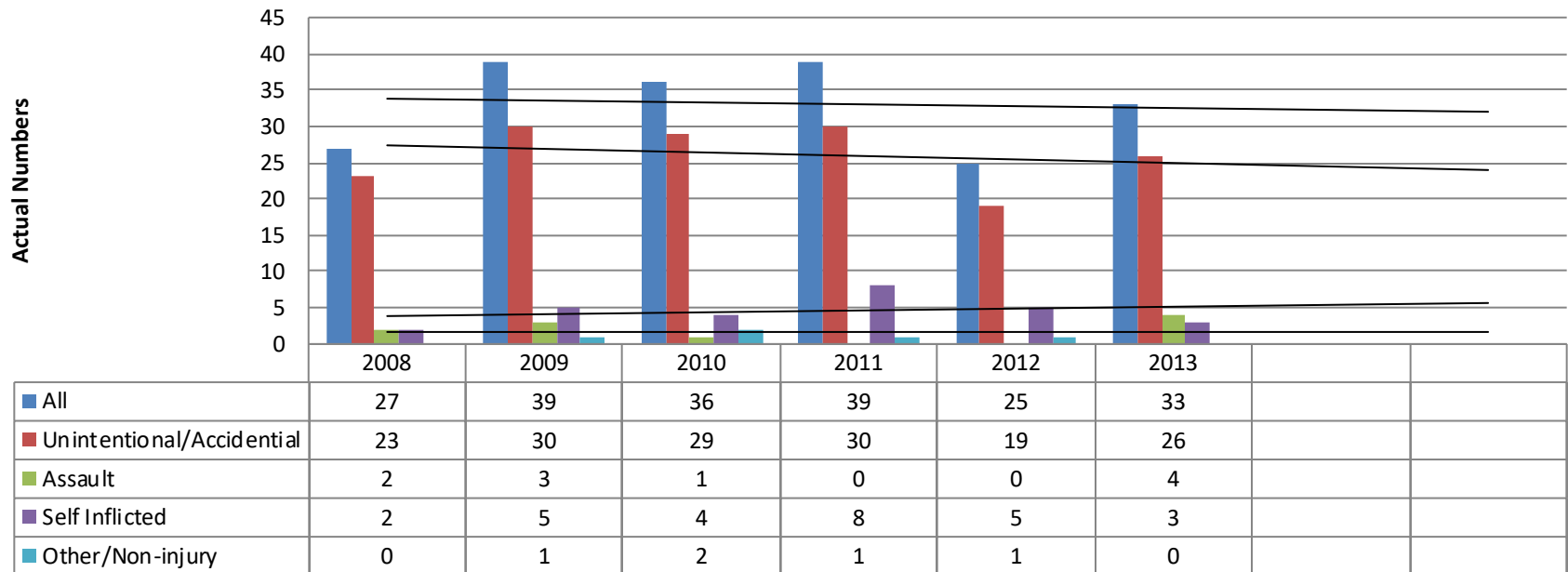
Indicator: Hospitalizations

FY 13 – Positive Progress

FY 16 –Monitor

FY 18 - Monitor

Talbot Youth Hospitalizations Aged 0 -21



2017&2018 – Unable to obtain updated information

Data Sources: MD HSCRC, www.goc.maryland.gov

Data pulled from hospitalization codes

Indicator: Infant Mortality

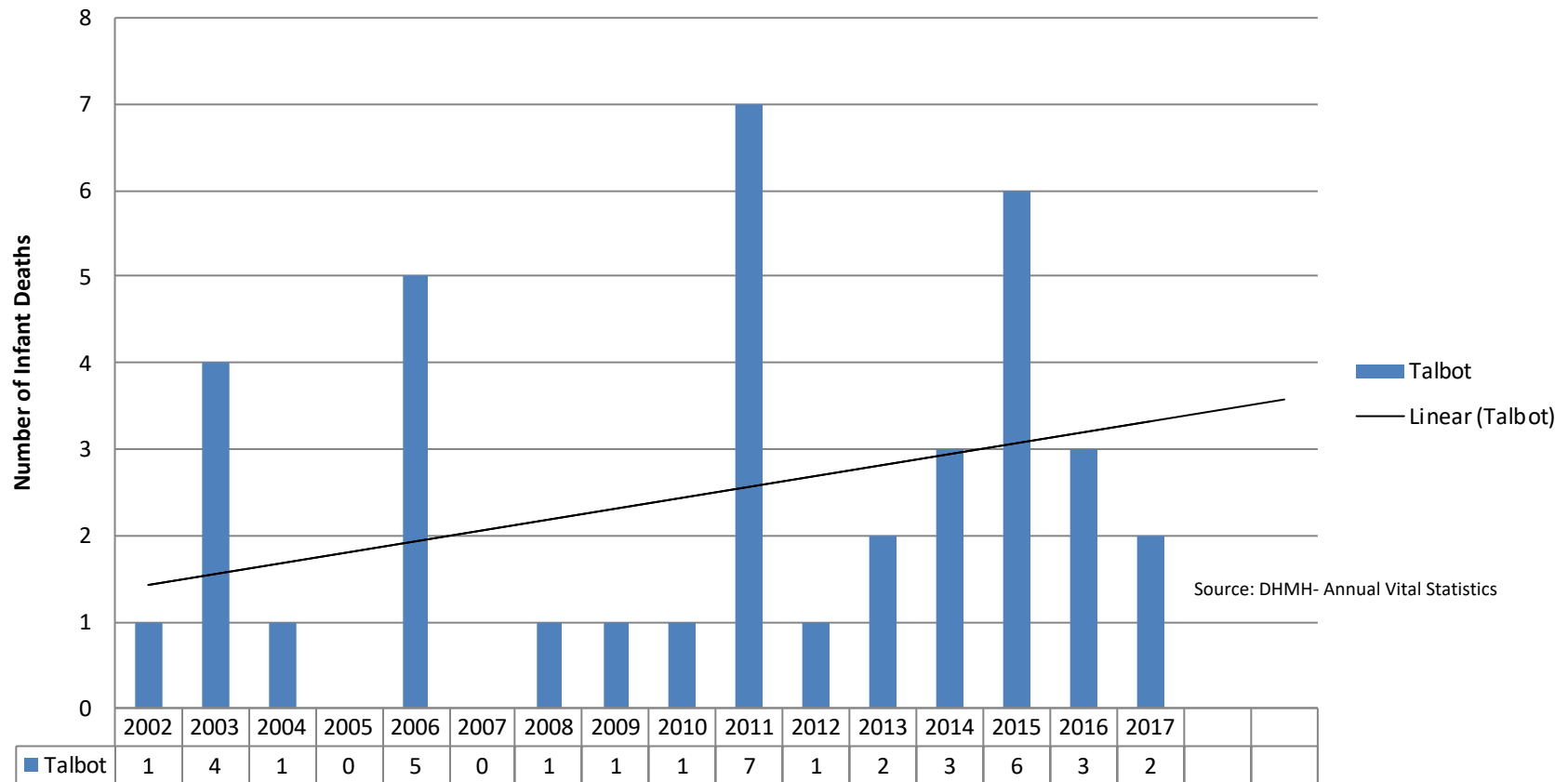
FY 13 – Positive Progress

FY 16-17 – Monitor

FY 18 - Monitor

FY 19 -

Infant Mortality



Indicator: Low Birth Weight

FY 13 – Positive Progress

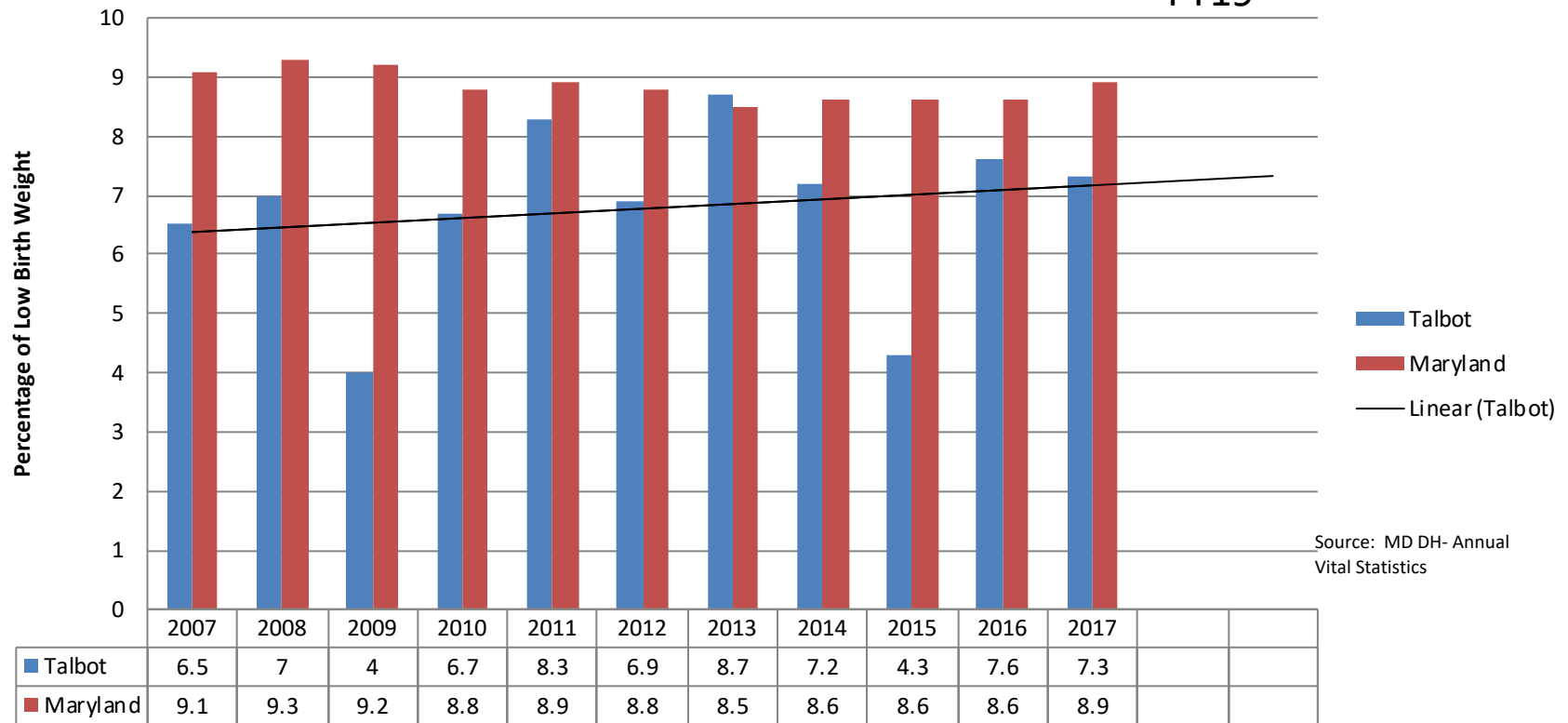
FY 16 –Positive Progress

FY 17- Positive Progress

FY 18 – Monitor

FY19 -

Low Birth Weight



Actual Numbers

FY 13 = 30

FY 14 =24

FY 15 = 14

FY 16=25

FY17=26

Indicator: Child Deaths

FY 13 – Positive Progress

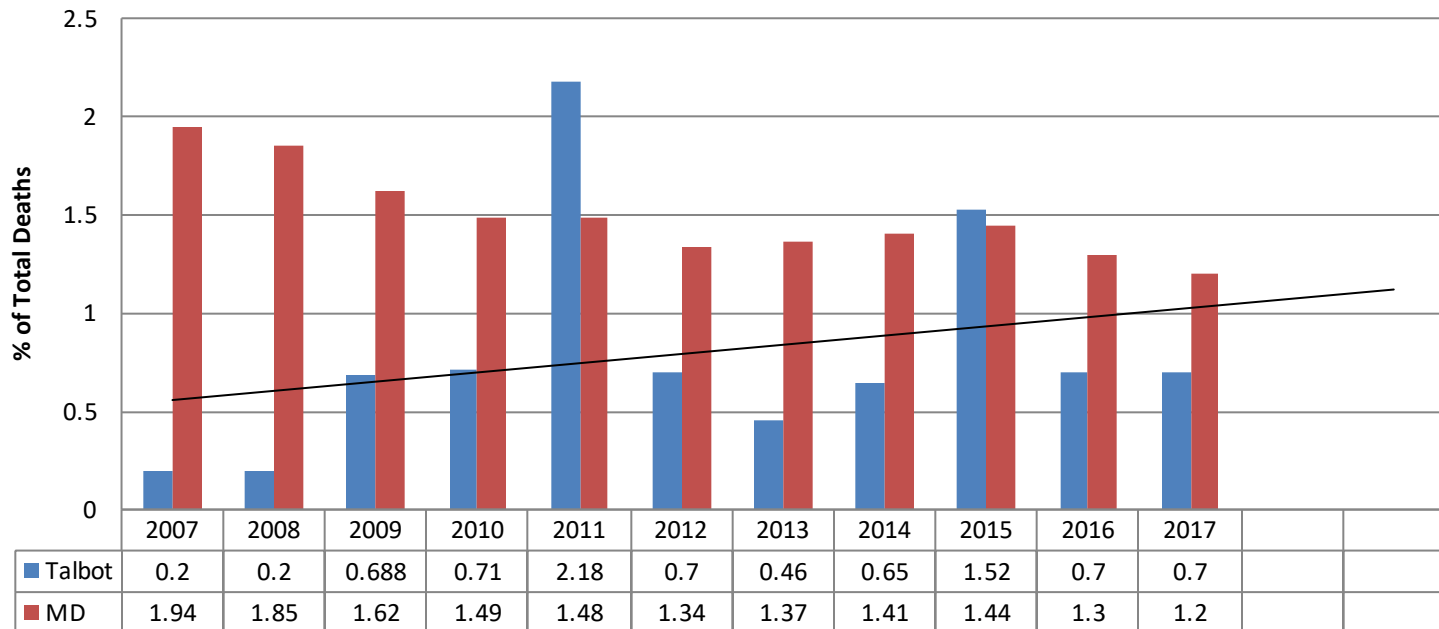
FY 16 – Positive Progress

FY 18- Positive Progress

FY19 -

Child Deaths

Age <1 to 14



Actual Numbers

FY 12 = 3 FY 13 = 2 FY 14=3 FY 15= 7 FY 16=3 FY17=3