

# Talbot County Results and Indicator Data FY 17

Compiled by the  
Talbot Family Network

# Indicator: Child Poverty

FY 13 – Monitor

FY 16 – Monitor

FY 17 - Monitor

## Talbot County

Poverty	'07	'08	'09	'10	'11	'12	'13	2014		2015	
								Tal	MD	Tal	MD
All Ages	2953 8.3%	2970 8.3%	3150 8.8%	3621 9.7%	4058 10.8%	3635 9.7%	4074 10.9%	4333 11.7%	10.4%	3857 10.4%	9.9%
< age 18	866 12.2%	875 12.5%	997 14.1%	1083 14.9%	1221 17.1%	1110 15.5%	1173 16.7%	1238 17.9%	13.8%	1093 15.9%	13.9%
Families with children age 5-17	551 10.7%	562 11.1%	635 12.3%	715 13.2%	817 15.4%	761 14.3%	790 15%	820 15.8%	13.2%	759 14.8%	12.8%

Source: US Census Bureau, Small Area & Income Poverty Estimates, 2015

Poverty Data	Talbot
Child Poverty**	16%
Single Parent Households*	39.3%
Poverty- Female Head of Household, Children age 18 and under*	28.7%
Poverty Female Head of Household, Children under age 5*	55.8%
Poverty – White, all ages*	9.4%
Poverty – Black, all ages*	21%
Poverty – Two of More races, all ages*	22.4%
Poverty – Latino, all ages*	25.2%

\* US Census Bureau, American Community Survey, 2015, 5 year Estimate \*\*US Census, 2015 SAIPE

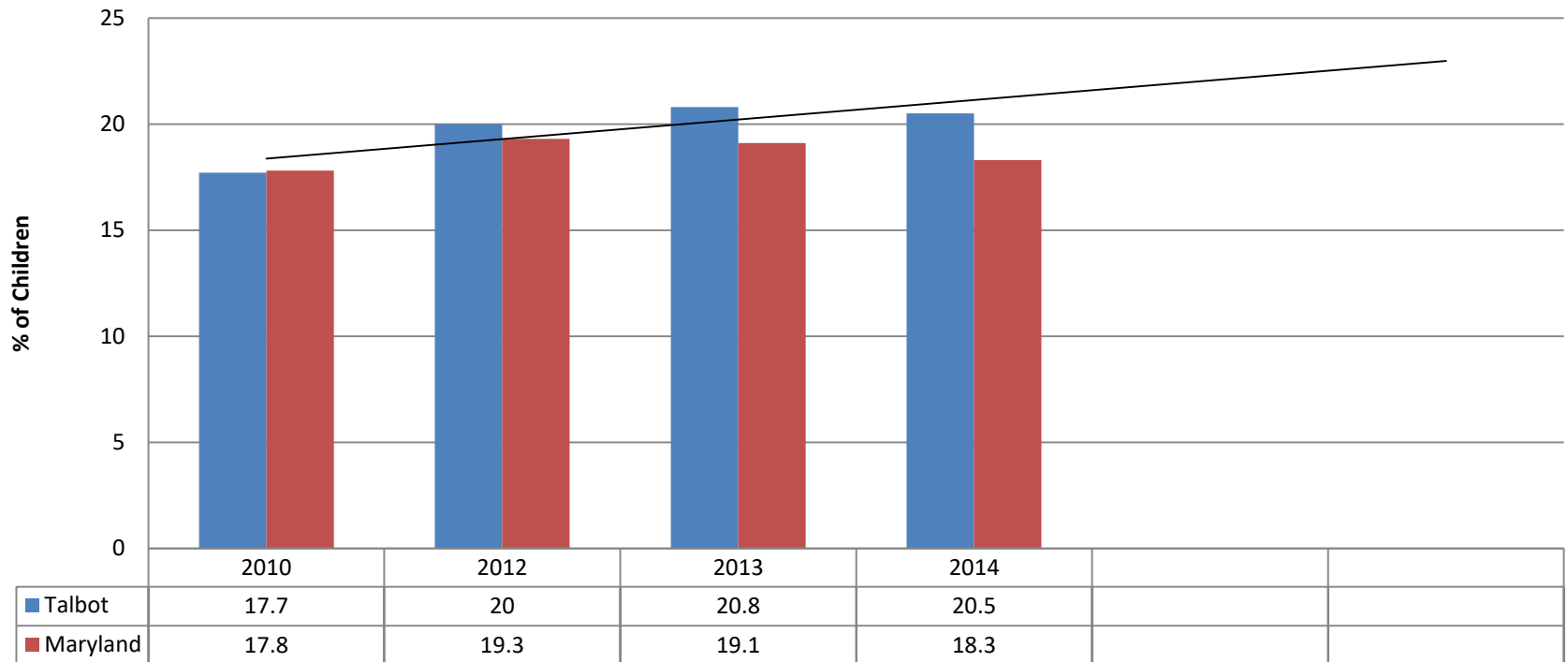
# Indicator: Hunger

FY 13 – Concern

FY 16 – Concern

FY 17 – Concern

## Child Food Insecurity

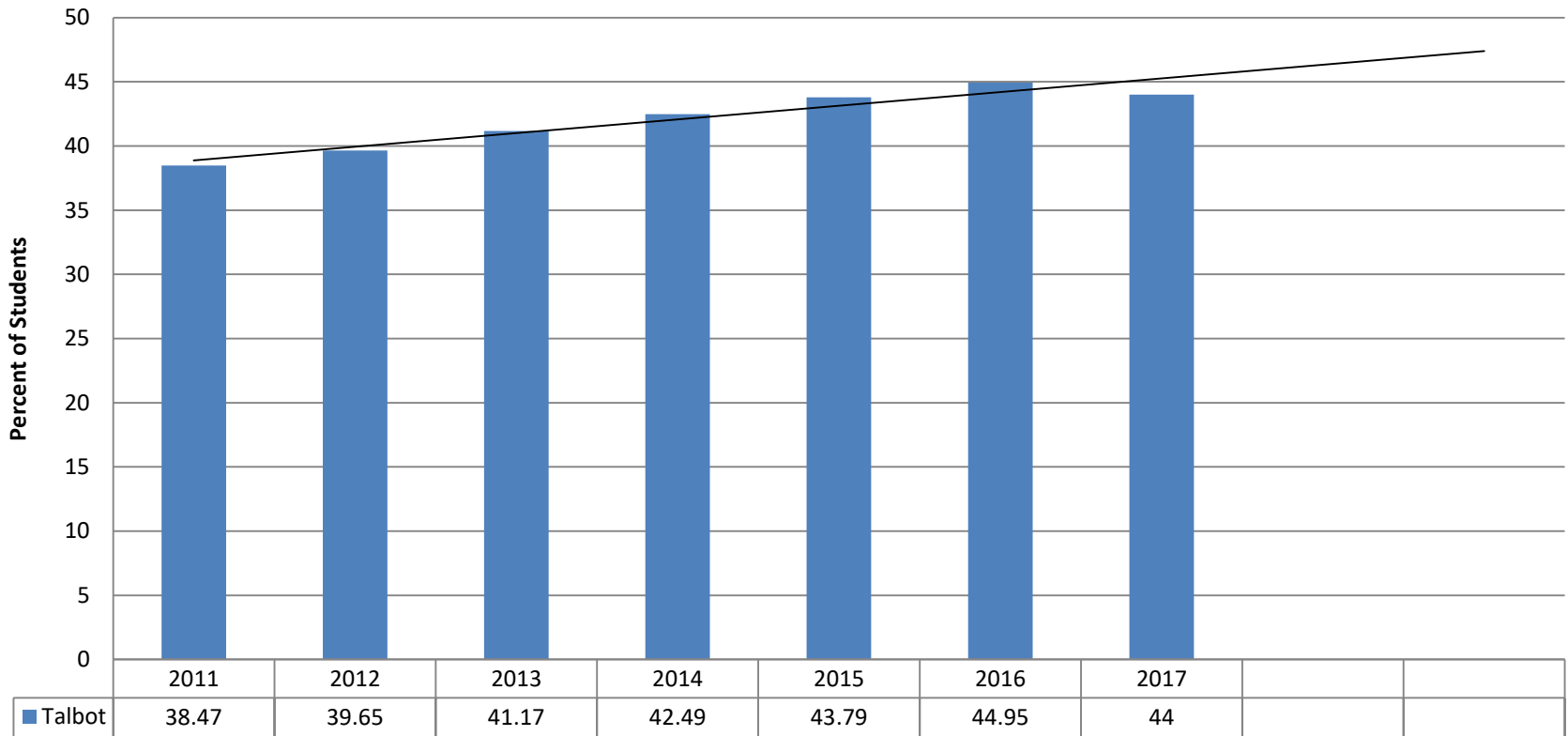


Source: Feeding America

Map the Meal Gap 2016

Estimated Actual # = 1470 children

## Free and Reduced Meals Talbot County Public Schools



Source: TCPS

**Actual Numbers**    FY 14 = 1,931 students    FY 15 = 2,038    FY 16= 2,074

Free Meals = 100% or less of Federal Poverty Guidelines

Reduced Meals = 100-185% of Federal Poverty Guidelines

# Indicator: Substance Use

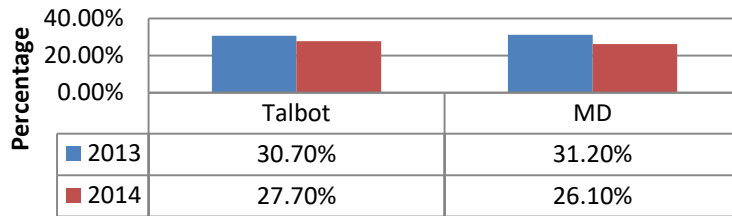
FY 13 – Concern

FY 16 – Concern

FY 17 – Concern

## Students who have had one or more drinks of alcohol in last 30 days

Public 9 - 12 graders



YRBS, Middle School

Ever had a drink of alcohol, other than a few sips

2013 N= 606 22.3%= 135 students

2014 N=666 17%= 113 students

Data Source: YRBS

Actual Number 2013 N=770 30.7% = 236 students

2014 N=875 27.7%=242

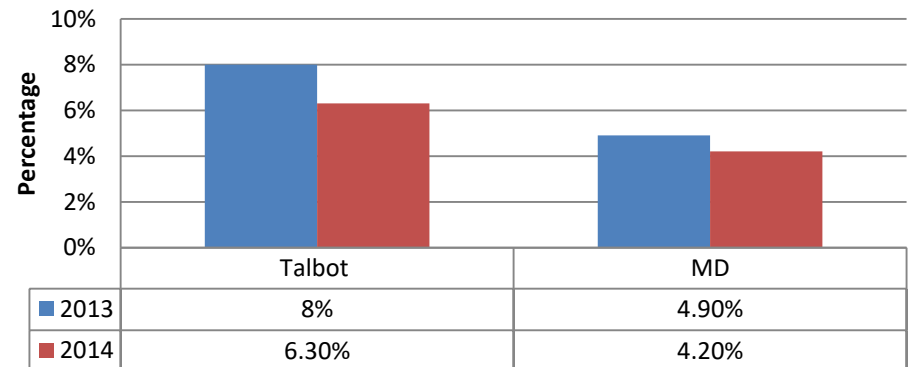
Data Source: YRBS

Actual Number 2013 N=824 8%=66 students

2014 N=929 6.3%=58

## Students who have used heroin at least once in lifetime

Public 9 - 12 graders



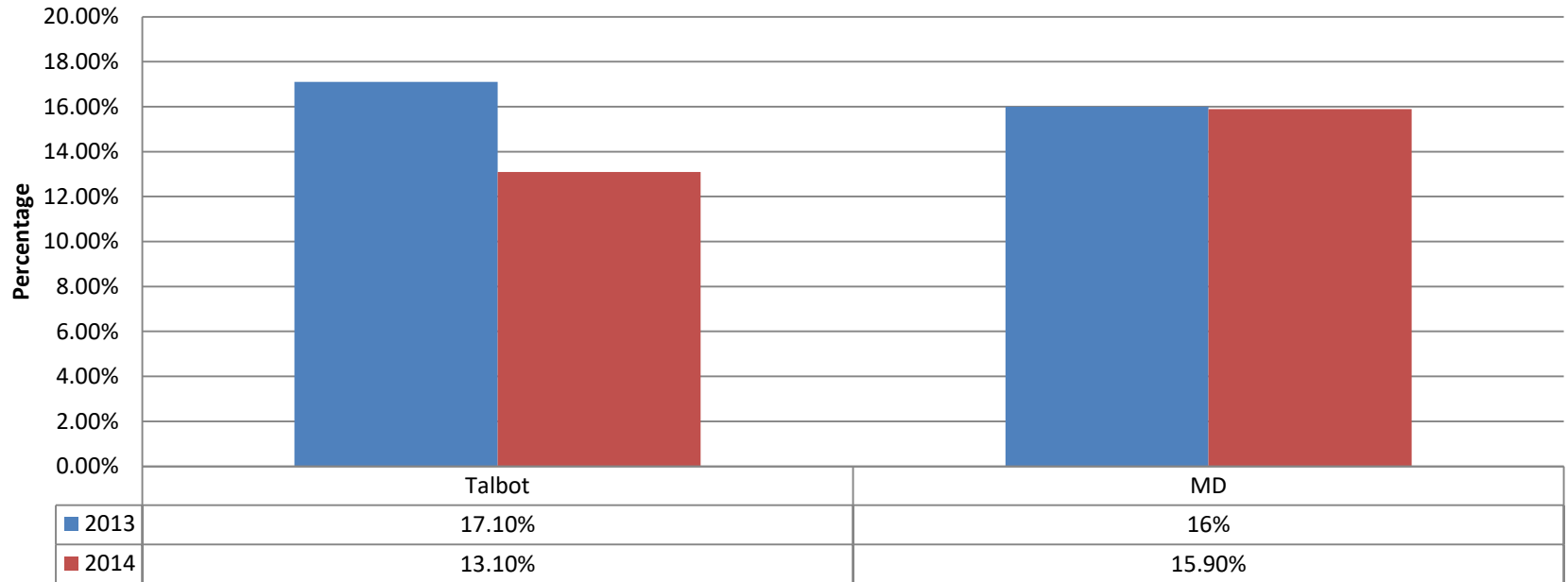
# Indicator: Mental Health

FY 13 – Concern

FY 16 – Concern

FY 17 – Concern

**Students who seriously considered attempting suicide during past 12 months, Public 9-12 graders**



Data Source: YRBS, QN27 Actual

2013 N=830 17.1% = 142

2014 N= 955 13.1%=125

YRBS Middle School, QN 15 Actual

2013 N=652 17.2% = 112

2014 N=706 13.3% = 94

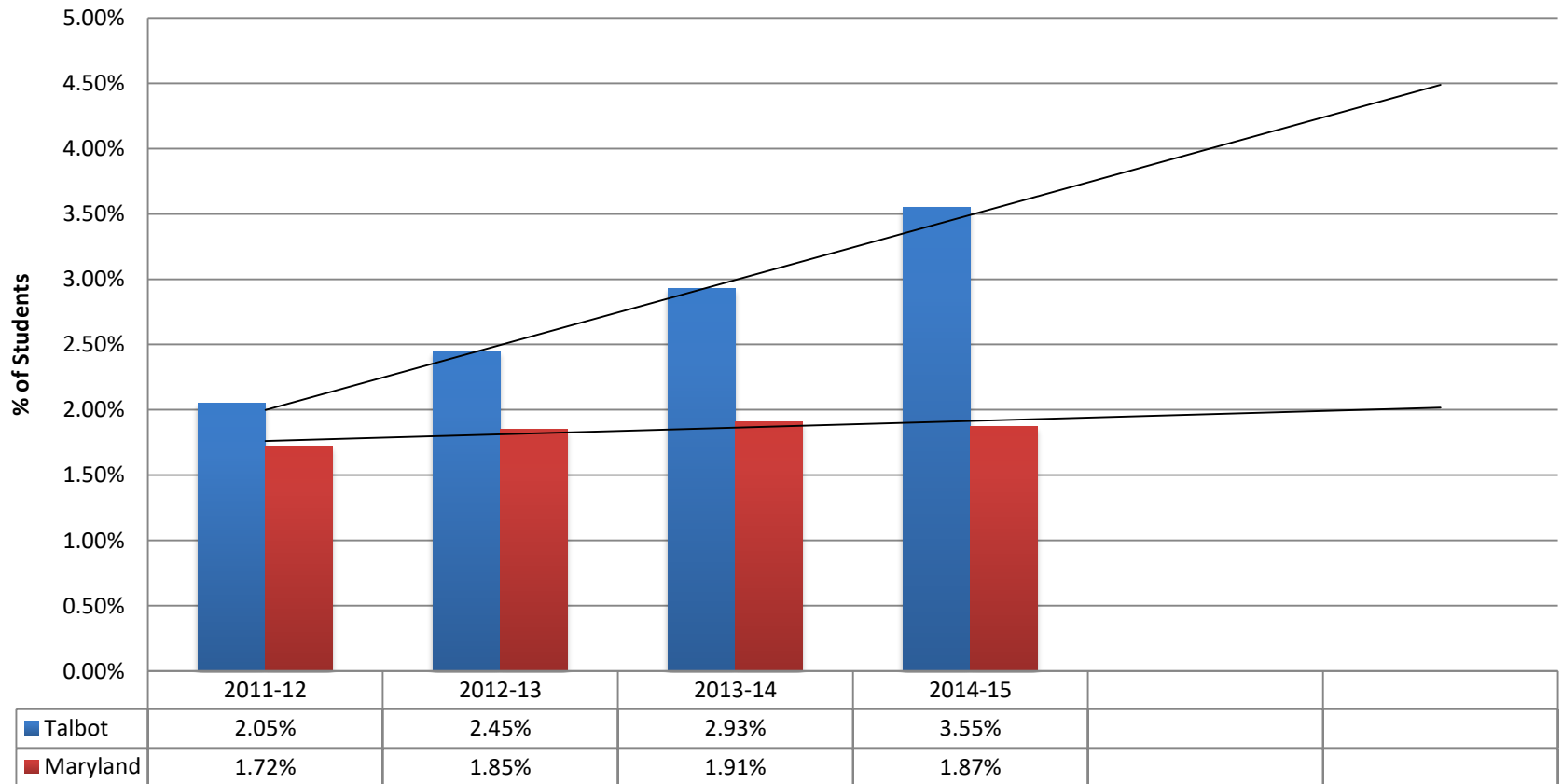
# Indicator: Homelessness

FY 13 – Monitor

FY 16 – Concern

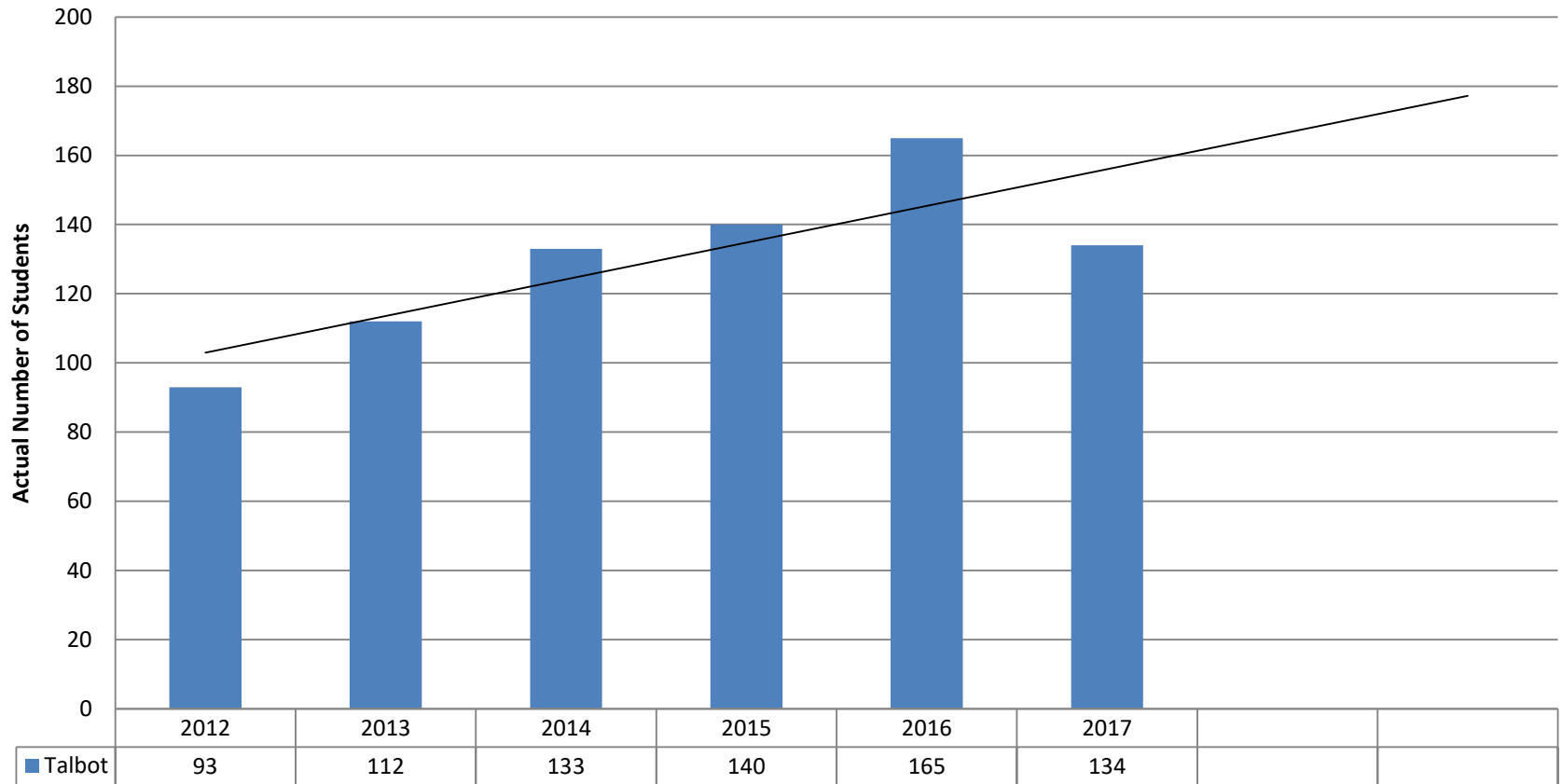
FY 17 – Concern

## TCPS Homeless Students





## TCPS Homeless Students



Source: TCPS

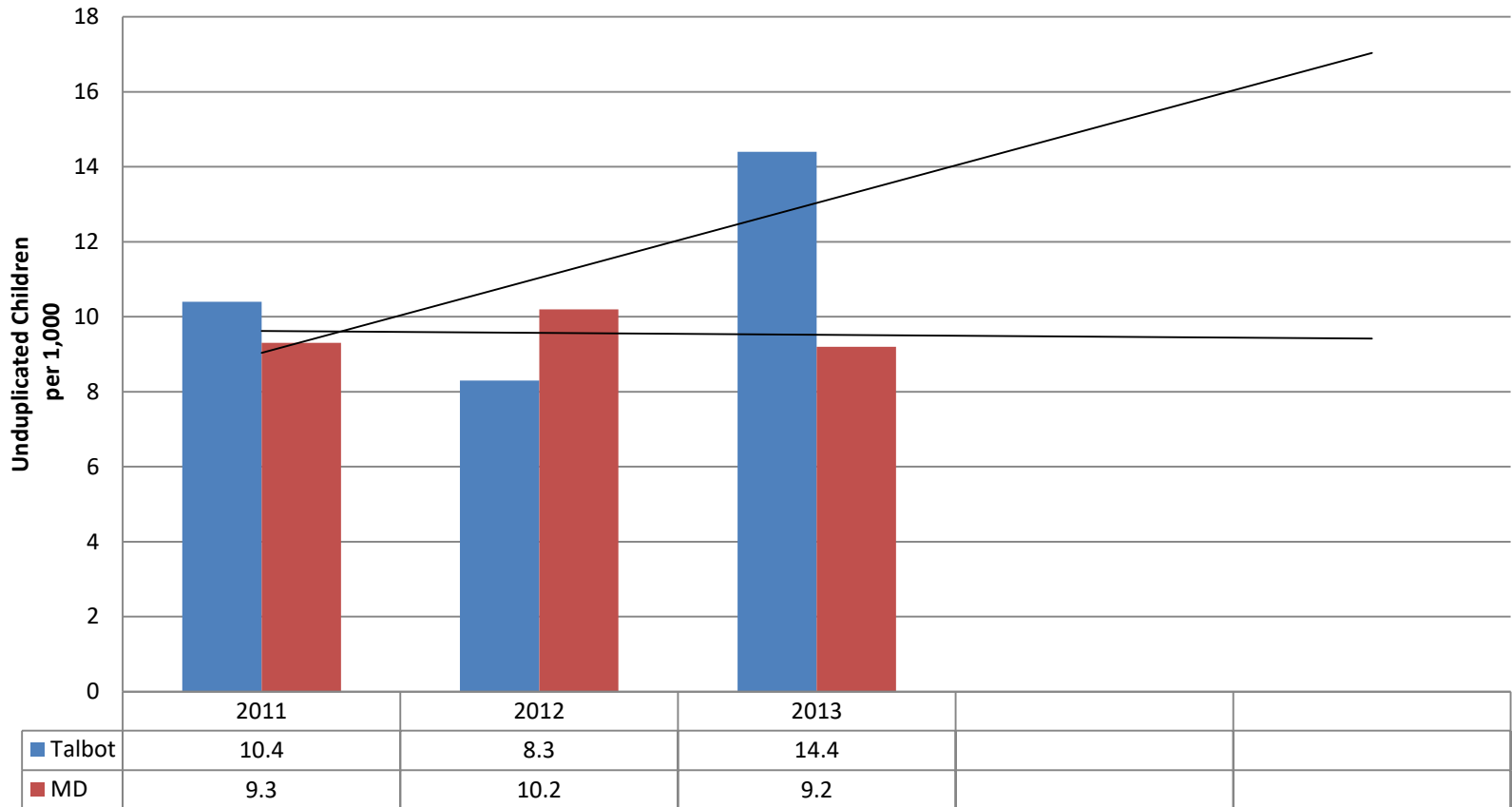
# Indicator: Maltreatment

FY 13 – Monitor

FY 16 – no data

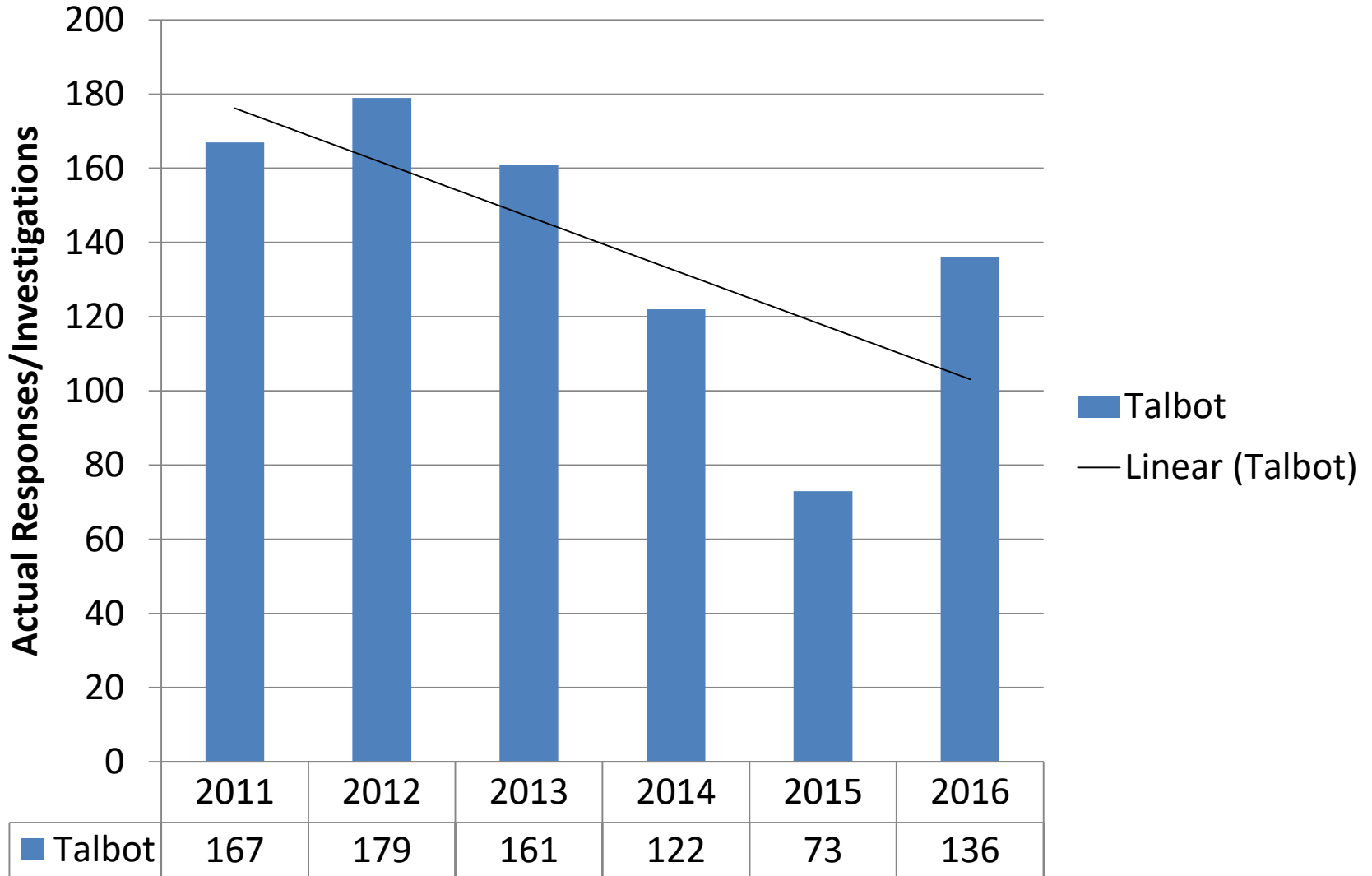
FY 17 - Monitor

Rate of Unduplicated Children with Indicated/ Unsubstantiated Child Abuse/  
Neglect Findings, Ages 0-17, Maryland (rate per 1,000)



Source: DHR

# Talbot Child Protective Services Responses



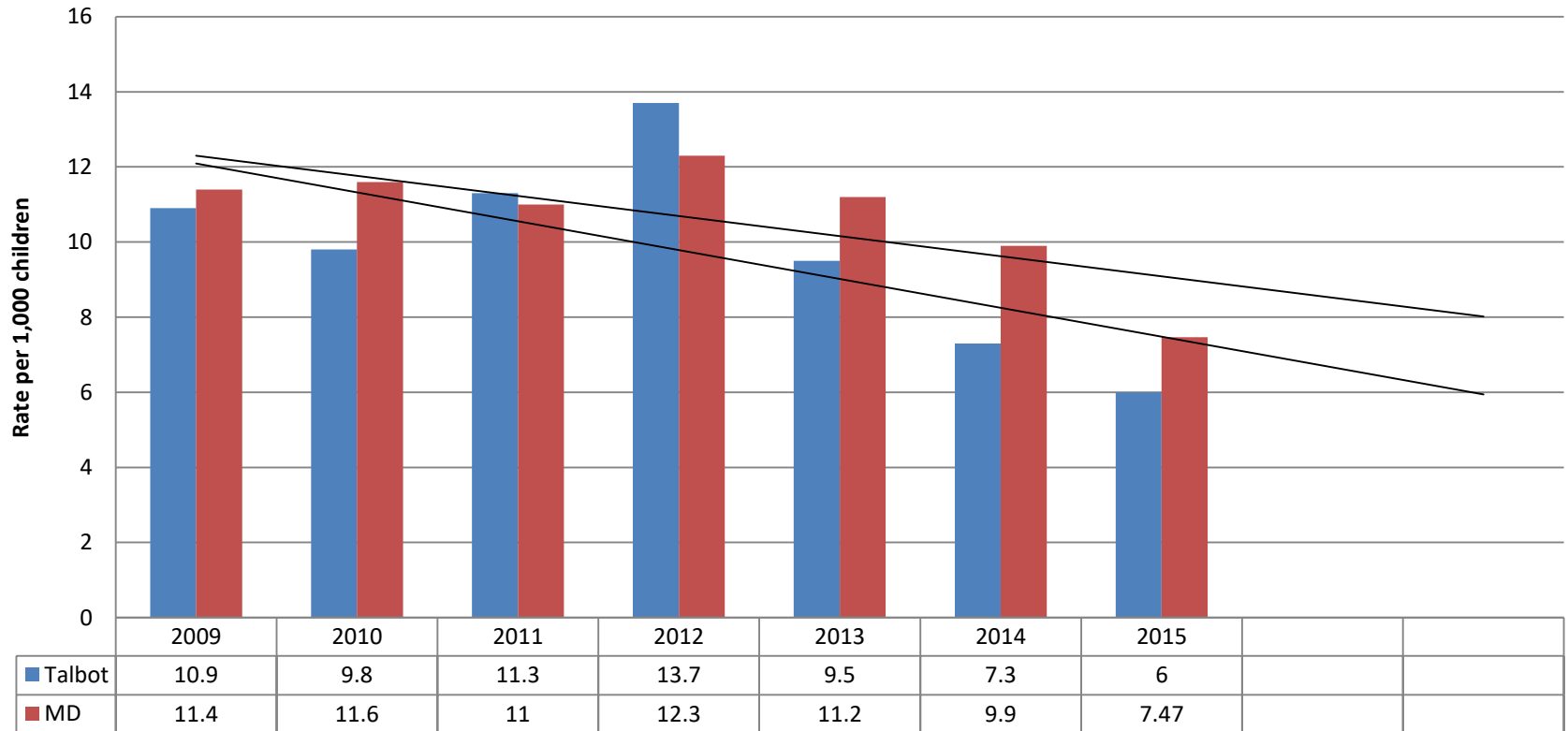
# Indicator: Out-of-Home Placement

FY 13 – Monitor

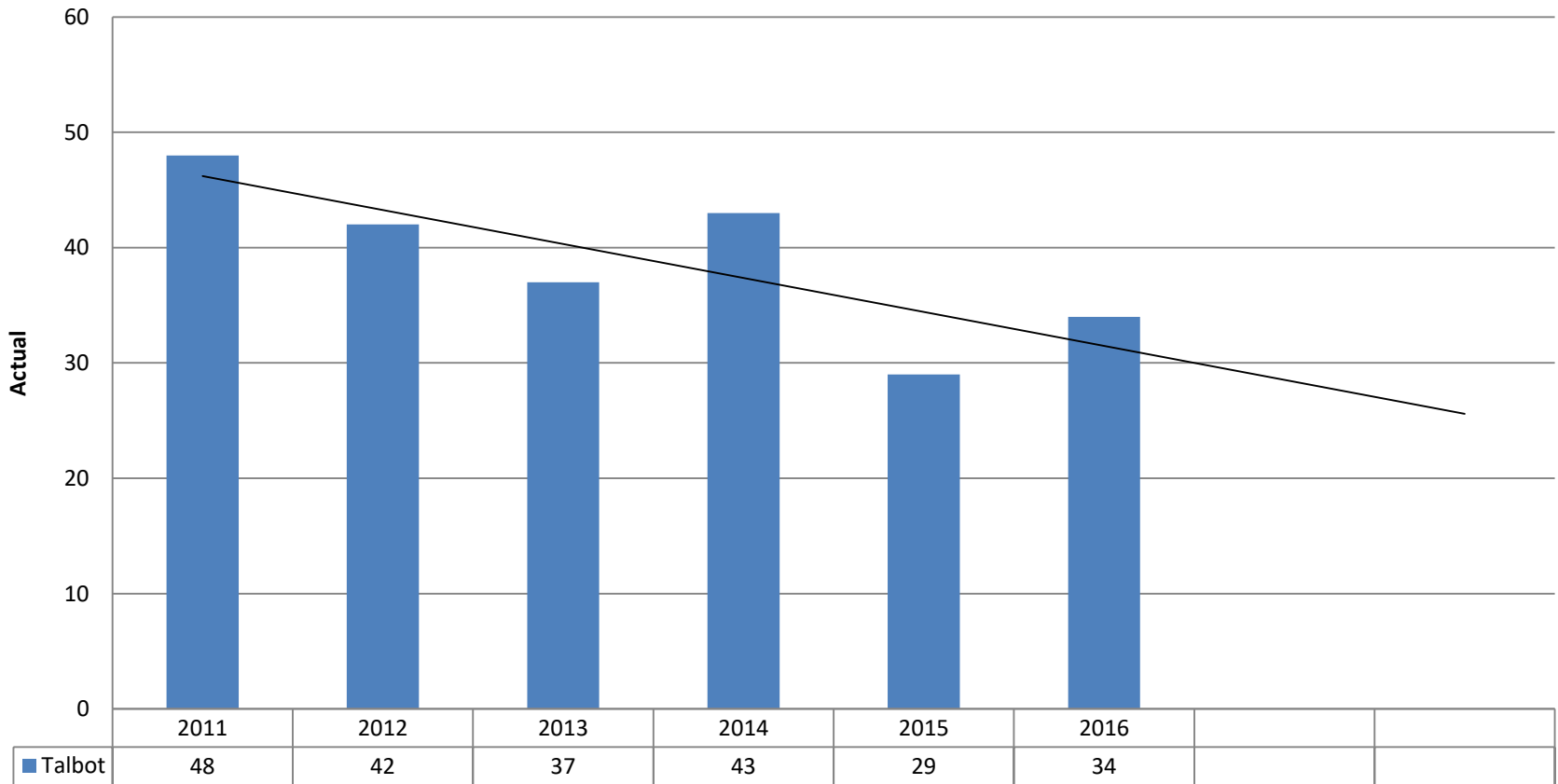
FY 16 –

FY 17 – Monitor

**Out of Home Placements  
Rate per 1,000 children**



## Talbot Out of Home Placement



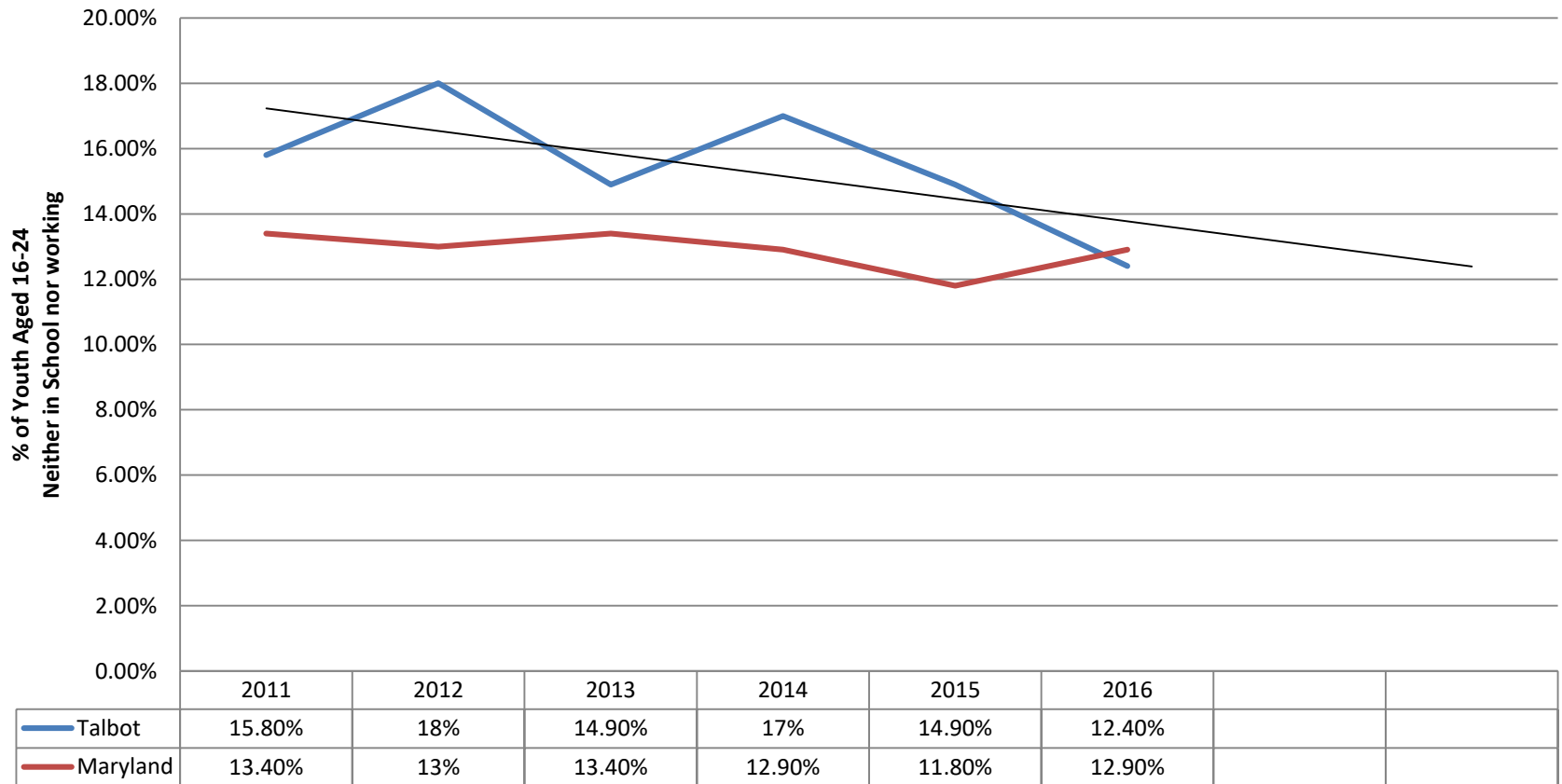
Source: Talbot County Department of Social Services

# Disconnect Youth

Age 16-24 Neither in school nor working

## Disconnected Youth

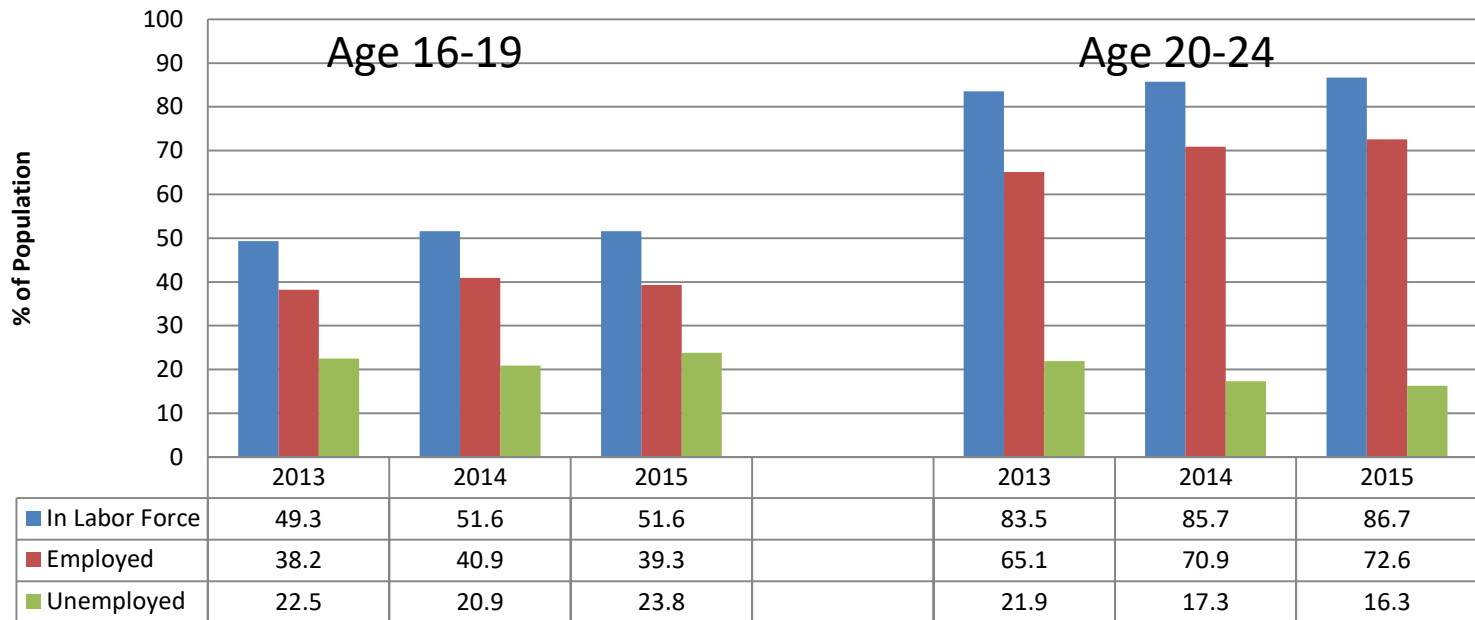
FY 17 - Concern



# Youth Employment

FY 16 –  
FY 17 – Monitor

## Youth Employment Youth (16-24) Employment Status



Youth Population	2013	2014	2015
16-19	1,745	1,615	1,570
20-24	1,747	1,853	1,814

Source: US Census, ACS, 5 yr Estimate, Employment

# Youth Employment

	2014		2015	
16-19	Talbot	MD	Talbot	MD
In Labor Force	51.6%	38.7%	51.5%	38%
Employed	40.9%	28.3%	39.3%	28.7%
Unemployed	20.9%	25.6%	23.8%	23.1%
20-24	Talbot	MD	Talbot	MD
In Labor Force	85.7	75.6	86.7	75.2
Employed	70.9%	62.9%	72.6%	63.1%
Unemployed	17.3%	15.1%	16.3%	14.2%

Source: US Census, ACS, 5 yr Estimate, Employment



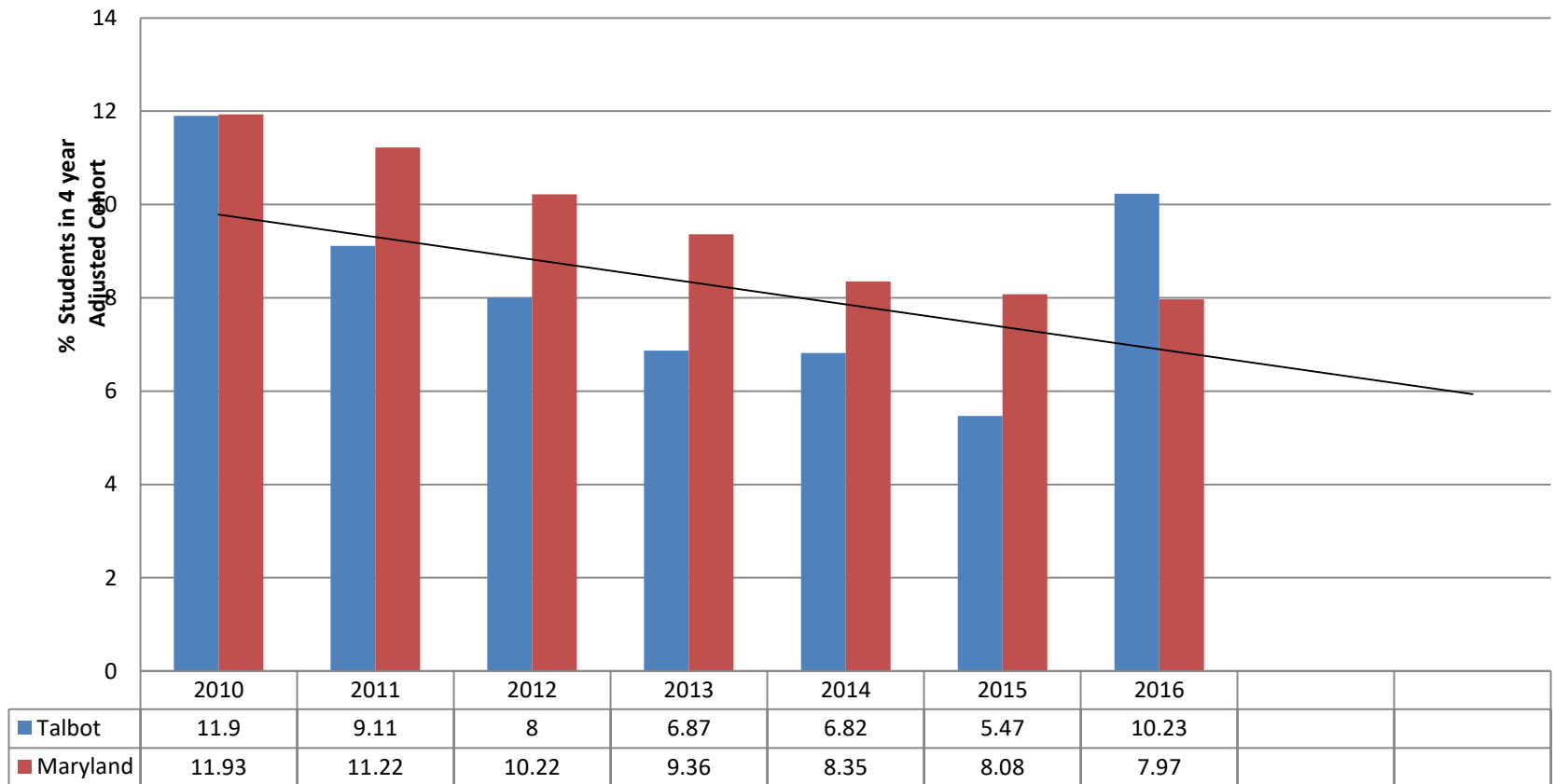
# Indicator: High School Dropout Rate

FY 13 – Positive Progress

FY 16 – Positive Progress ?

FY 17 - Concern

## High School Drop Out Rate



Source: MSDE

# High School Drop Out Data

Graduation Year	# of Dropouts	# Students in Class	Dropout Rate
2013	25	364	6.87%
2014	24	352	6.82%
2015	17	311	5.47%
2016	36	352	10.23%

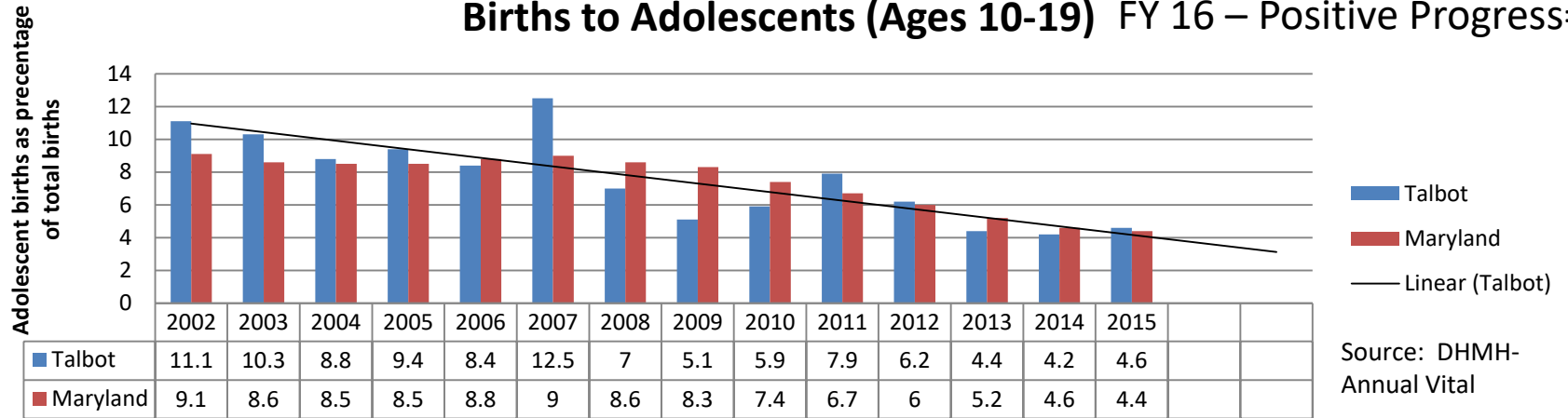
# High School Dropout Rate

Talbot Dropout Data by Subgroup				
Subgroups	FY 13	FY 14	FY 15	FY 16
Latino	17% (4)	8% (2)	14.29% (3)	29.03% (9)
Limited English Proficient	33.33% (2)	100% (2)		70% (7)
FARMS	15.13% (18) 72% of all dropouts	12.28% (14) 58% of all dropouts	9.68% (9) 53% of all dropouts	17.36% (21) 58% of all dropouts
Male FARMS	19.67% (12)	14.55% (8)	12.77%(6)	24.59%(15)
Female FARMS	10.34% (6)	10.17% (6)	6.52%(3)	10% (6)

# Indicator: Births to Adolescents

FY 13 – Monitor

Births to Adolescents (Ages 10-19) FY 16 – Positive Progress= NO



Talbot Births to Adolescents				
Actual Numbers				
Year	<age 15	Age 15-17	Age 18-19	Total
FY 12	1	5	14	20
FY 13	0	6	9	15
FY 14	0	2	12	14
FY 15	1	6	8	15

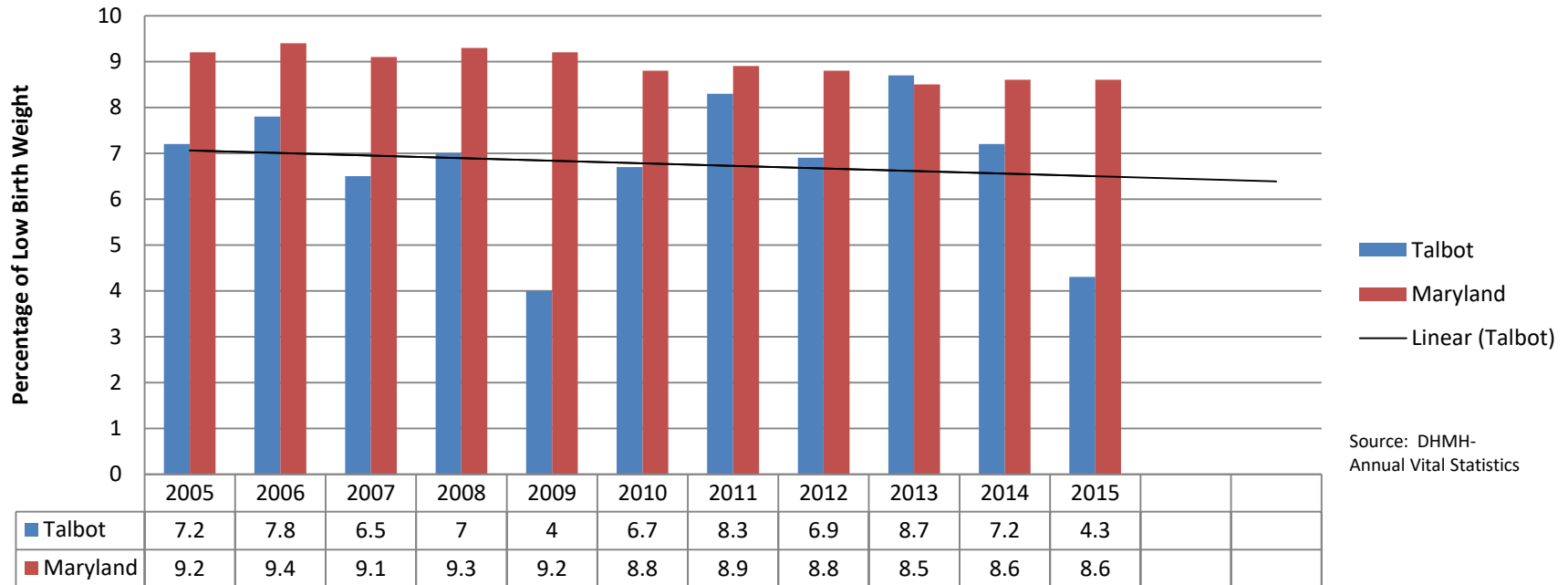
# Indicator: Low Birth Weight

FY 13 – Positive Progress

FY 16 – Positive Progress

FY 17- Positive Progress

## Low Birth Weight



Actual Numbers

FY 13 = 30

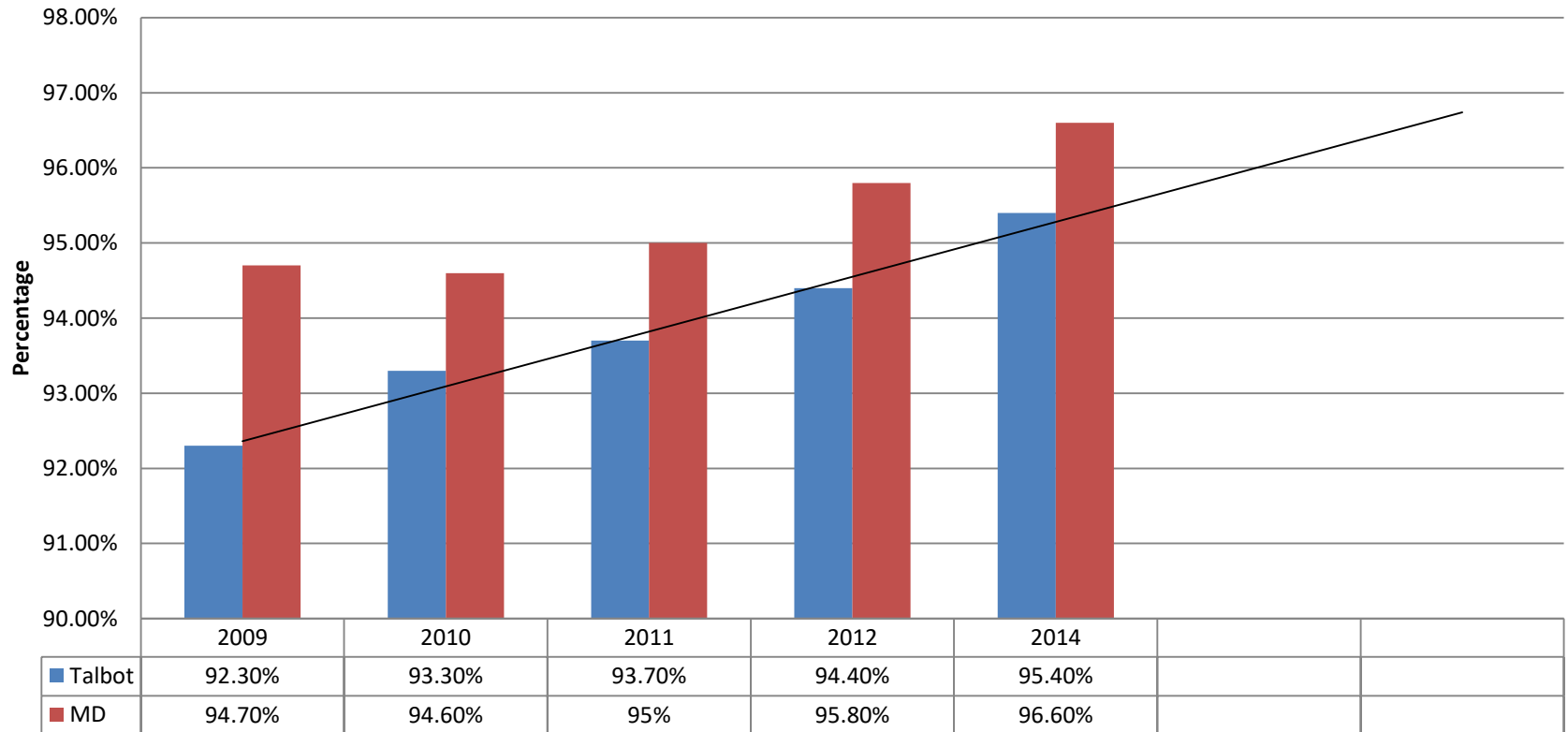
FY 14 = 24

FY 15 = 14

# Indicator: Health Insurance Coverage

## Health Insurance Children, ages 0-19

FY 13 – Positive Progress  
 FY 16 – Positive Progress  
 FY 17 – Positive Progress



Data Source: MD DHMH, State Health Improvement

# Indicator: Immunizations

FY 13 – Positive Progress

FY 16 –Positive Progress

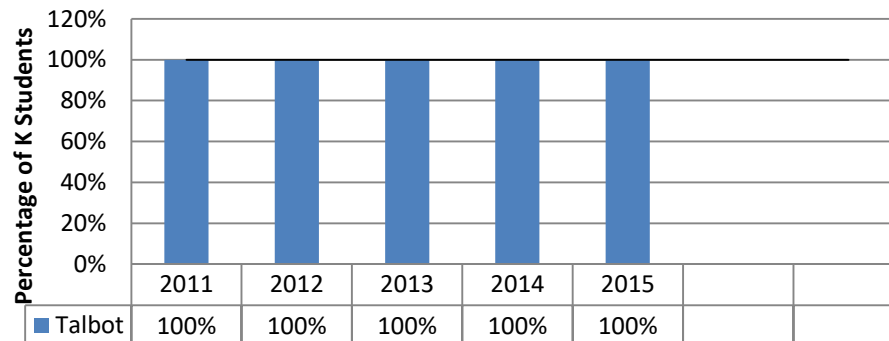
FY 17- Positive Progress

## Estimated Vaccination Coverage Among Children Between the Ages of 19 Months - 35 Months, Survey Years 2002 - 2013v

	2006	2007	2008	2009	2010	2012	2013
MD	78.1%	91.3%	80.2%	84.0%	73.3%	73%	81.9%
US	76.9%	77.4%	76.1%	76%	74.9%	71.9%	77.7%

Source: National Immunization Survey

## Talbot Students Fully Immunized upon Kindergarten Entry

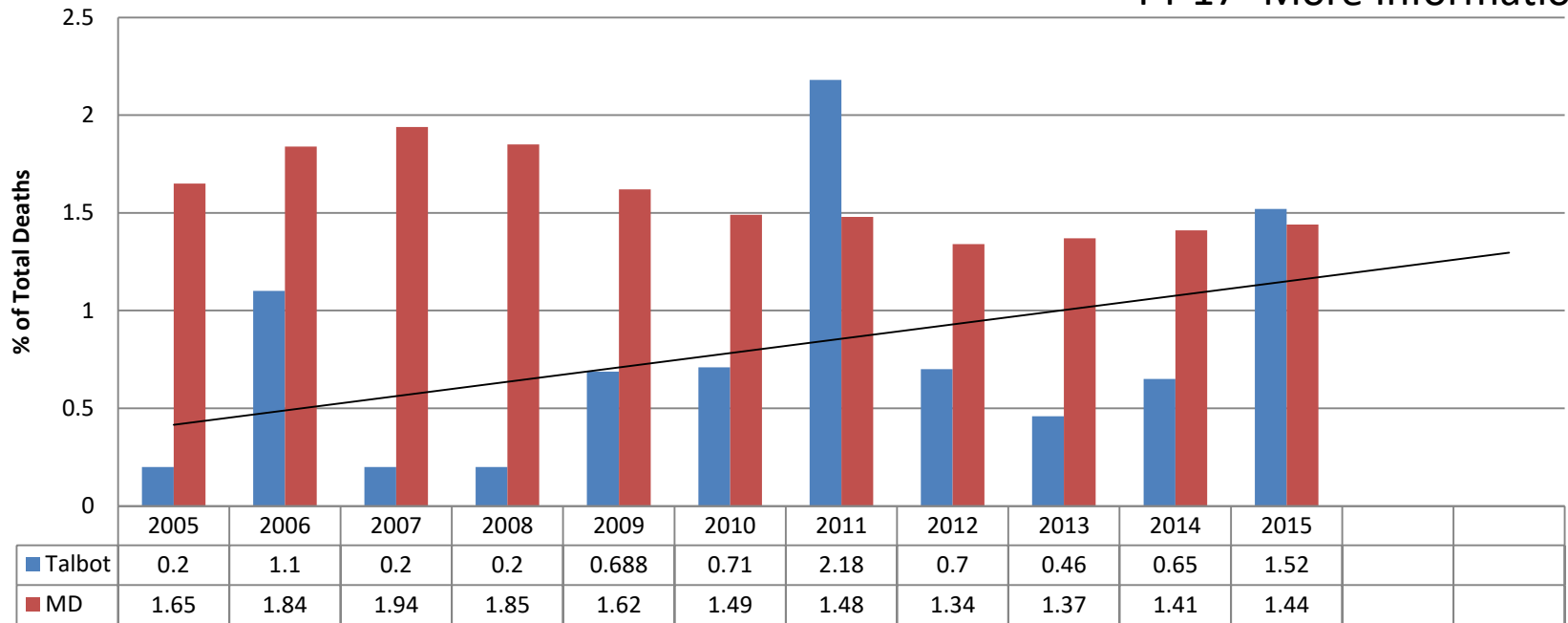


Source: TCHD

# Indicator: Child Deaths

## Child Deaths Age <1 to 14

FY 13 – Positive Progress  
 FY 16 – Positive Progress  
 FY 17- More Information



Actual Numbers

FY 12 = 3

FY 13 = 2

FY 14=3

FY 15= 7



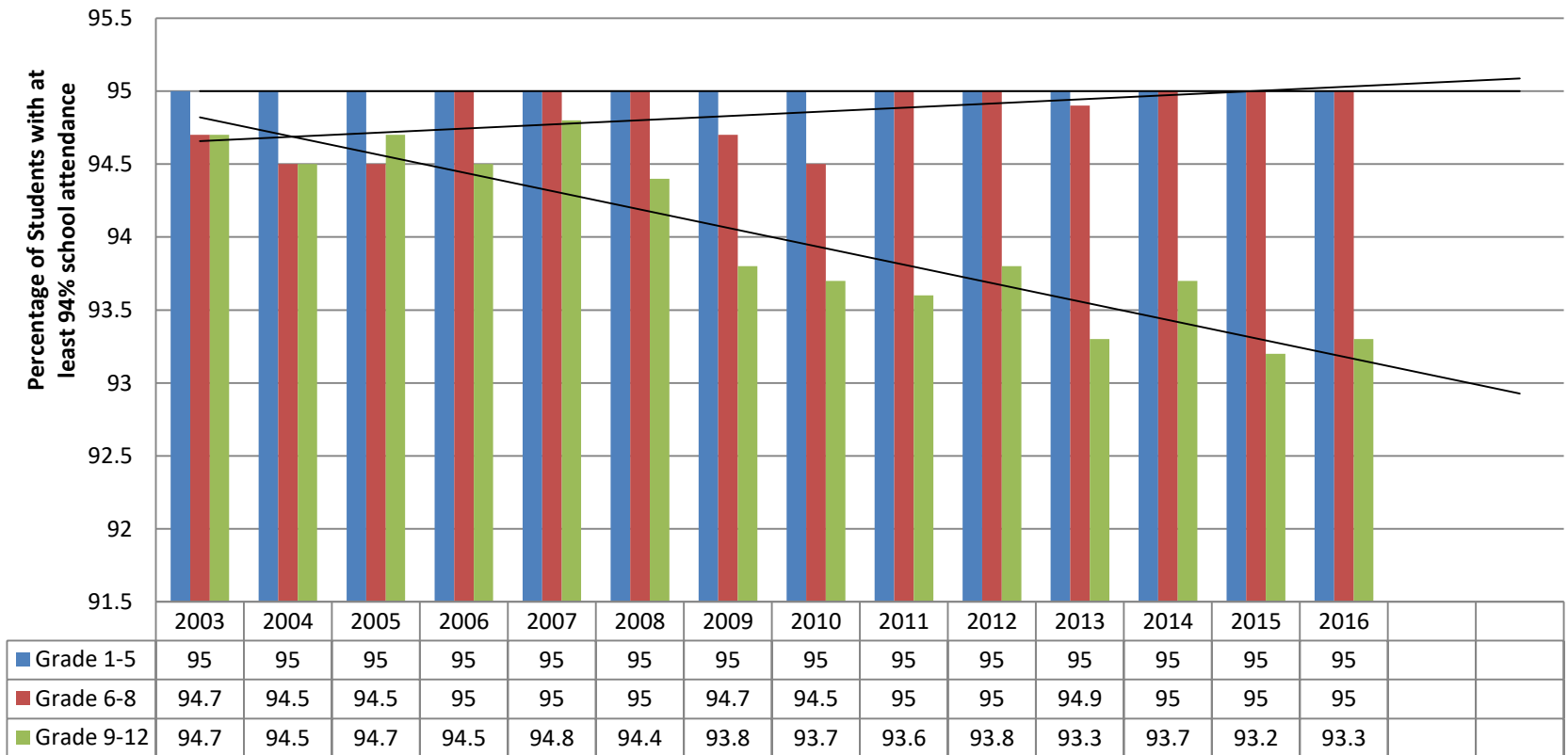
# Indicator: Truancy

FY 13 – Positive Progress

FY 16 – Positive Progress

FY 17- Positive Progress

**Attendance Rate**  
Talbot County Public Schools



Source: MSDE

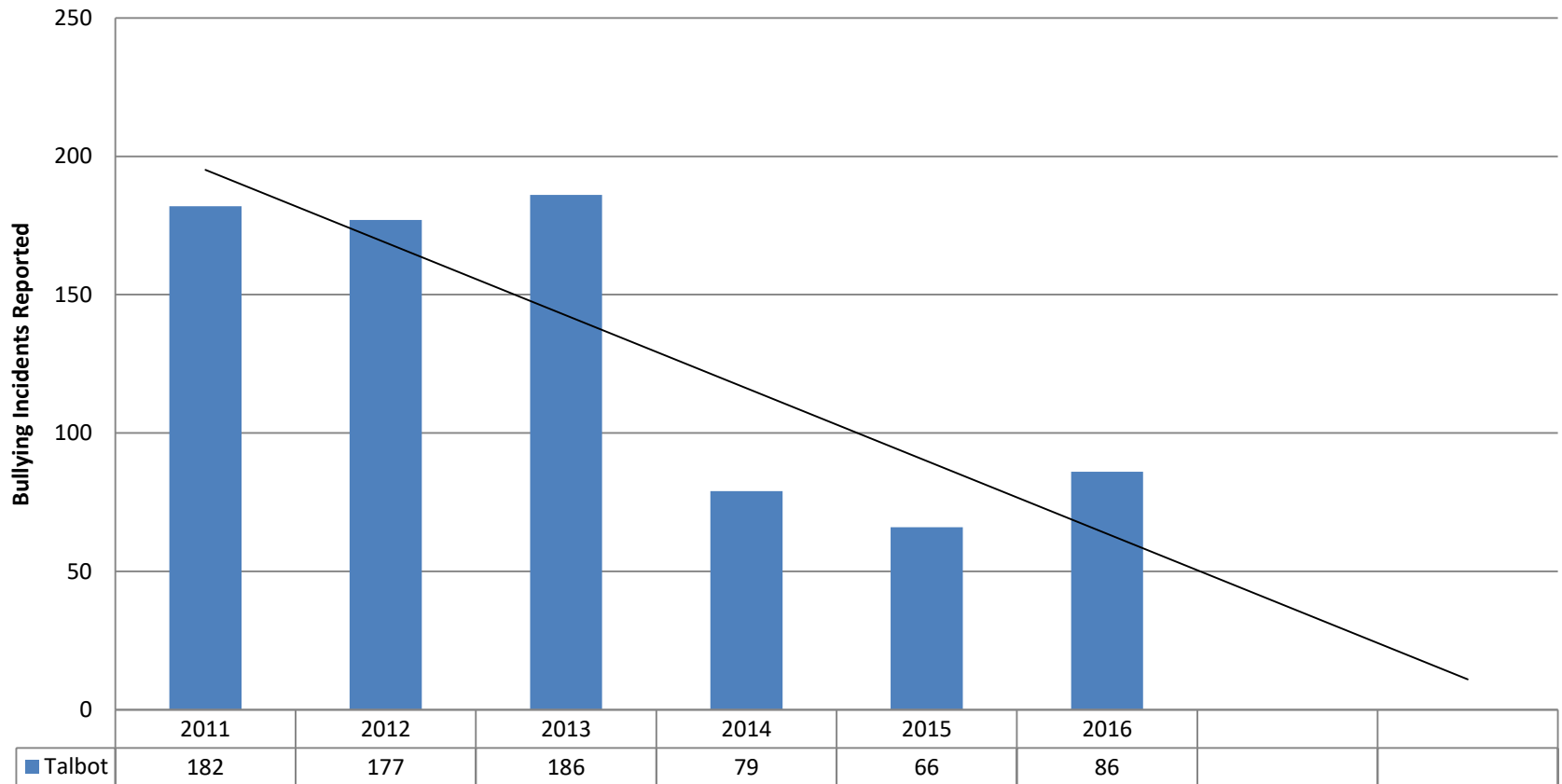
# Indicator: Bullying and Harassment

FY 13 – Concern

FY 16 – Positive Progress

FY 17- Positive Progress

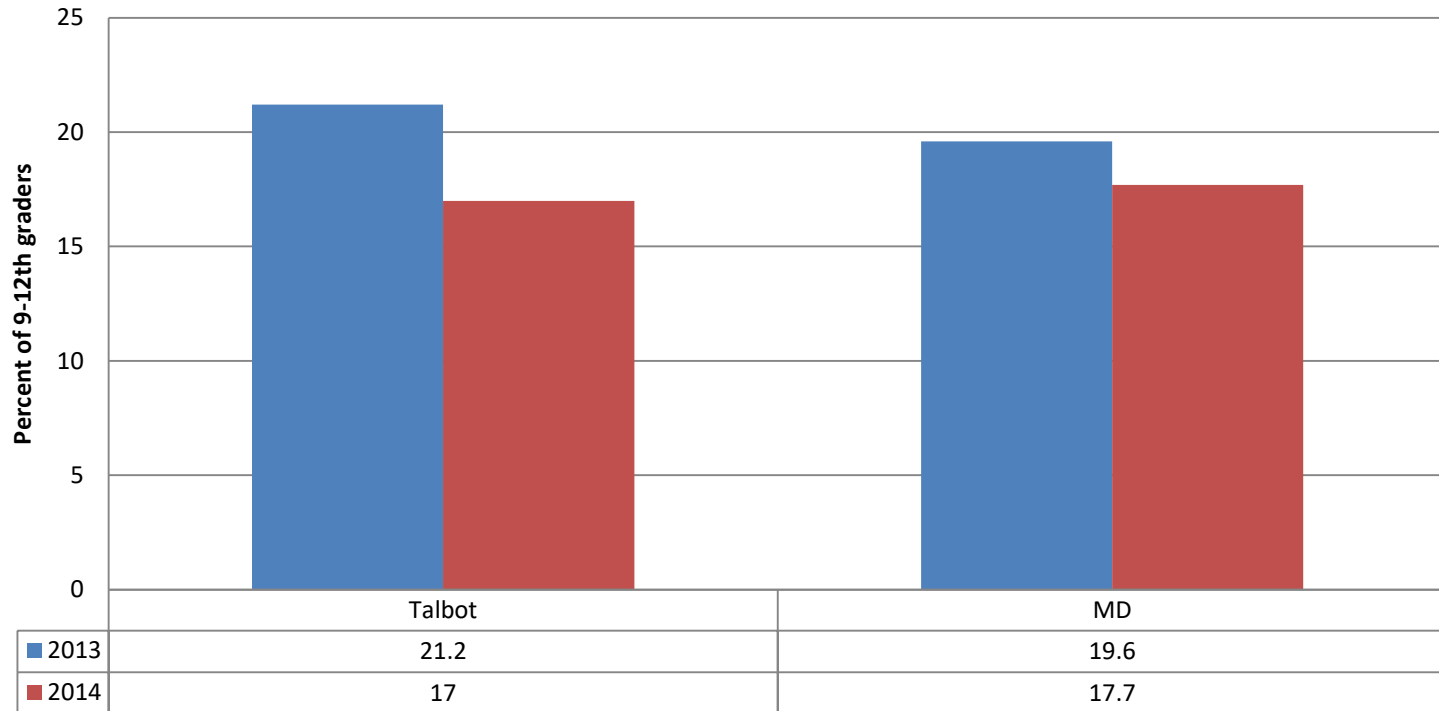
## TCPS Bullying Incident Reports



Source: TCPS

# Bullying

Students who report being bullied on school property in past 12 months



Source: YRBS, QN24, Actual  
2013 N=826 21.2% = 175 students  
2014 N=949 17%=161

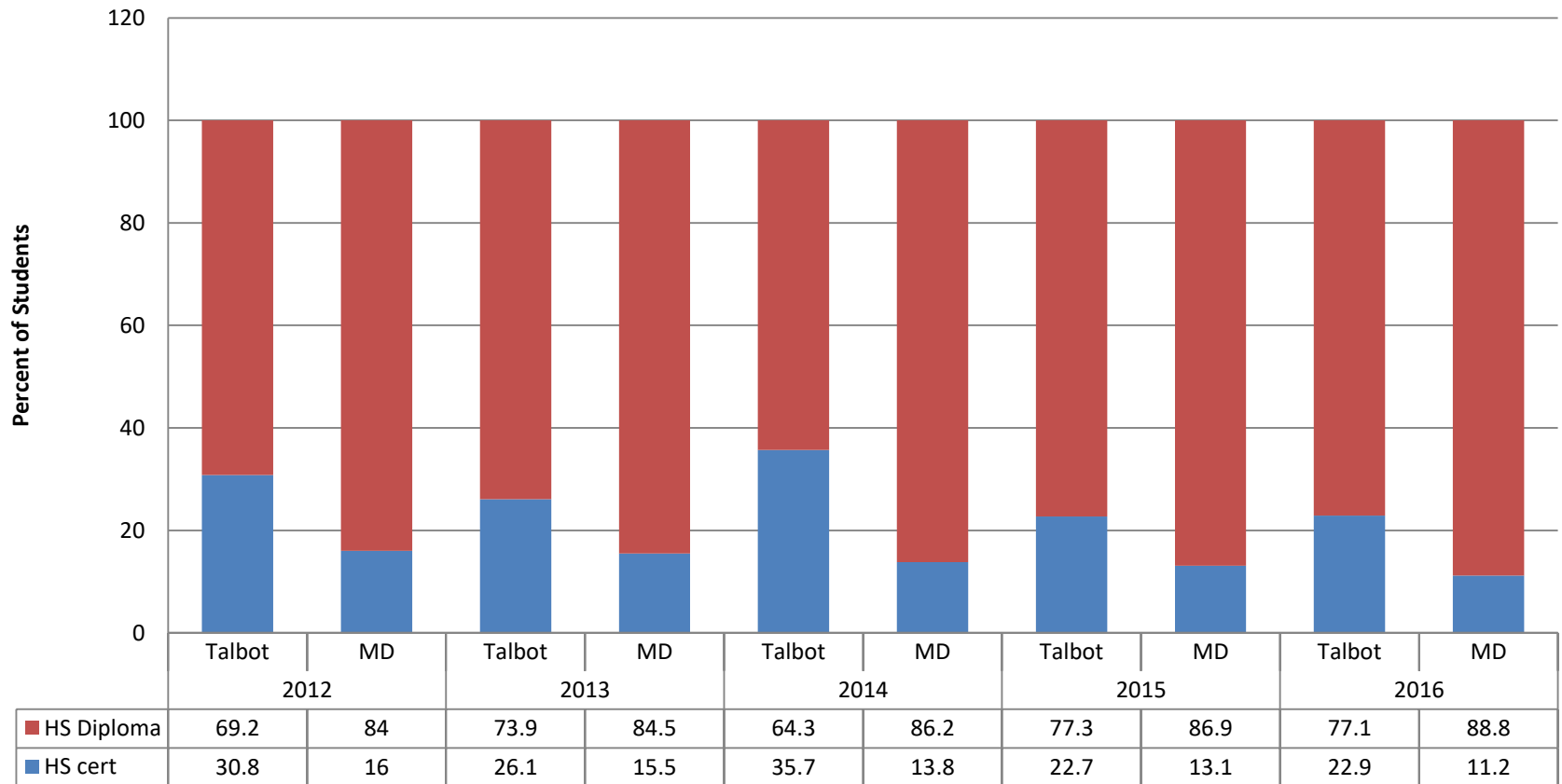
# Indicator: HS Completion of Students with Disabilities

FY 13 – Positive Progress

FY 16- Positive Progress

Fy 17- Positive Progress

## High School Completion by Special Education Students

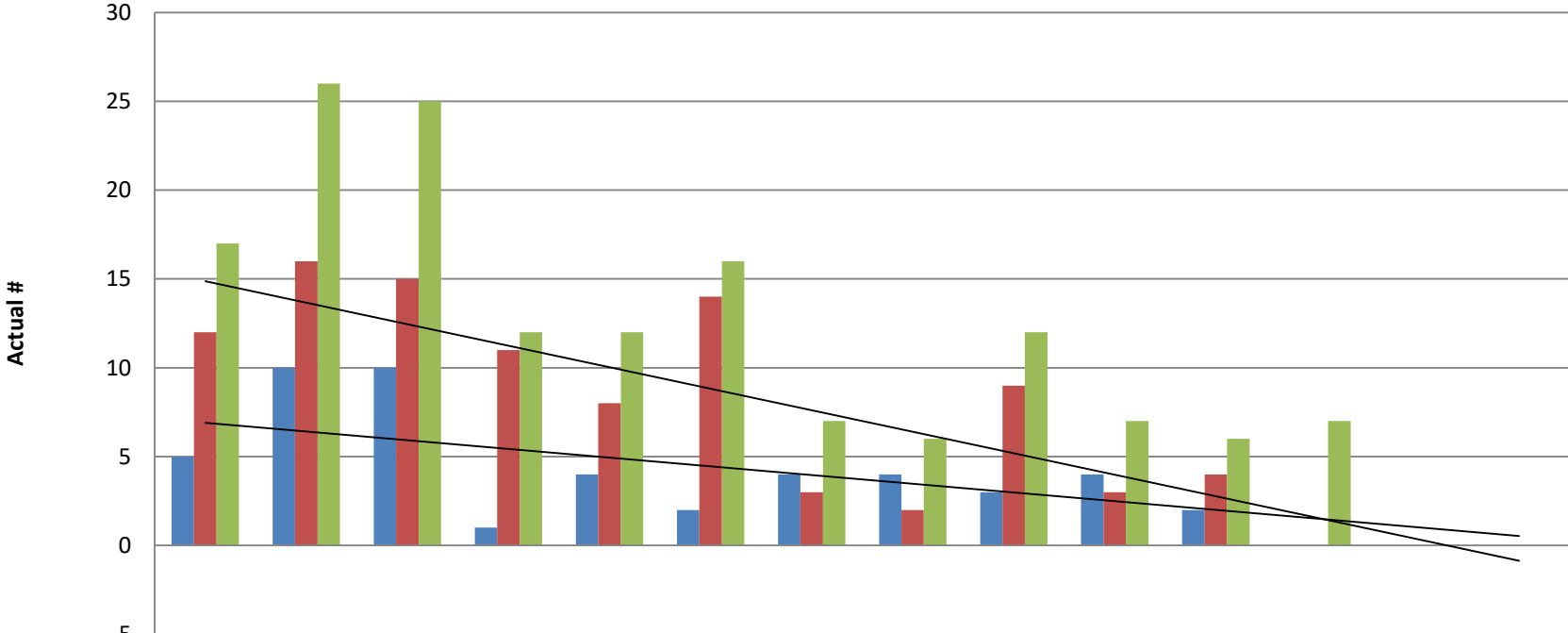


Source: MSDE

# Indicator: Juvenile Felony Offenses

FY 13 – Monitor  
 FY 16 – Positive Progress  
 FY 17 – Positive Progress

## Juvenile Violent Felonies



	2005	2006	2007	2008	2009	2010	2011	2012	2013	2014	2015	2016		
■ Age 10-14	5	10	10	1	4	2	4	4	3	4	2			
■ Age 15-17	12	16	15	11	8	14	3	2	9	3	4			
■ Total	17	26	25	12	12	16	7	6	12	7	6	7		

Source: DJS Annual Statistical Report via GOC

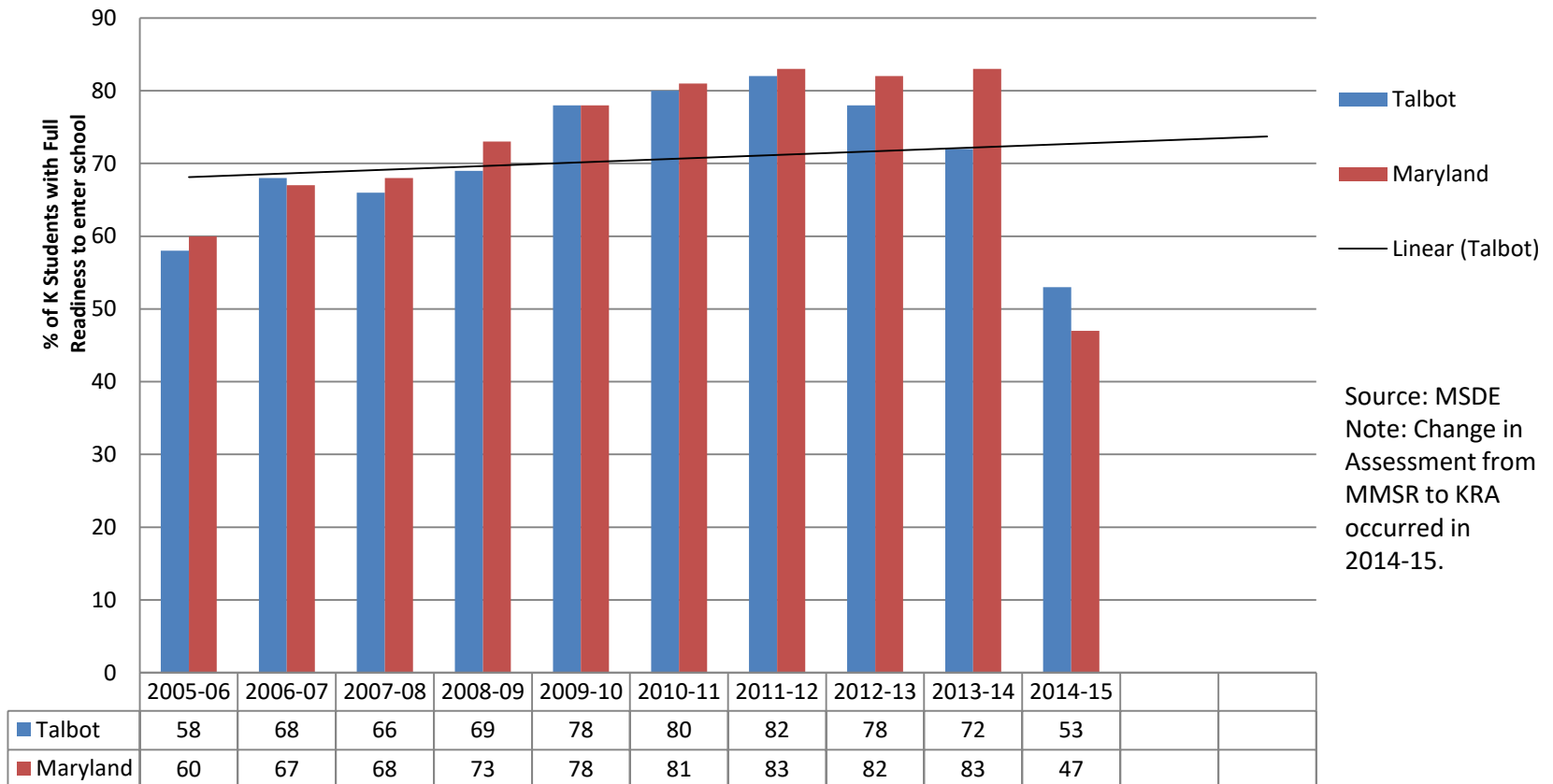
# Indicator: Kindergarten Assessment

FY 13 – Positive Progress

FY 16 – Baseline

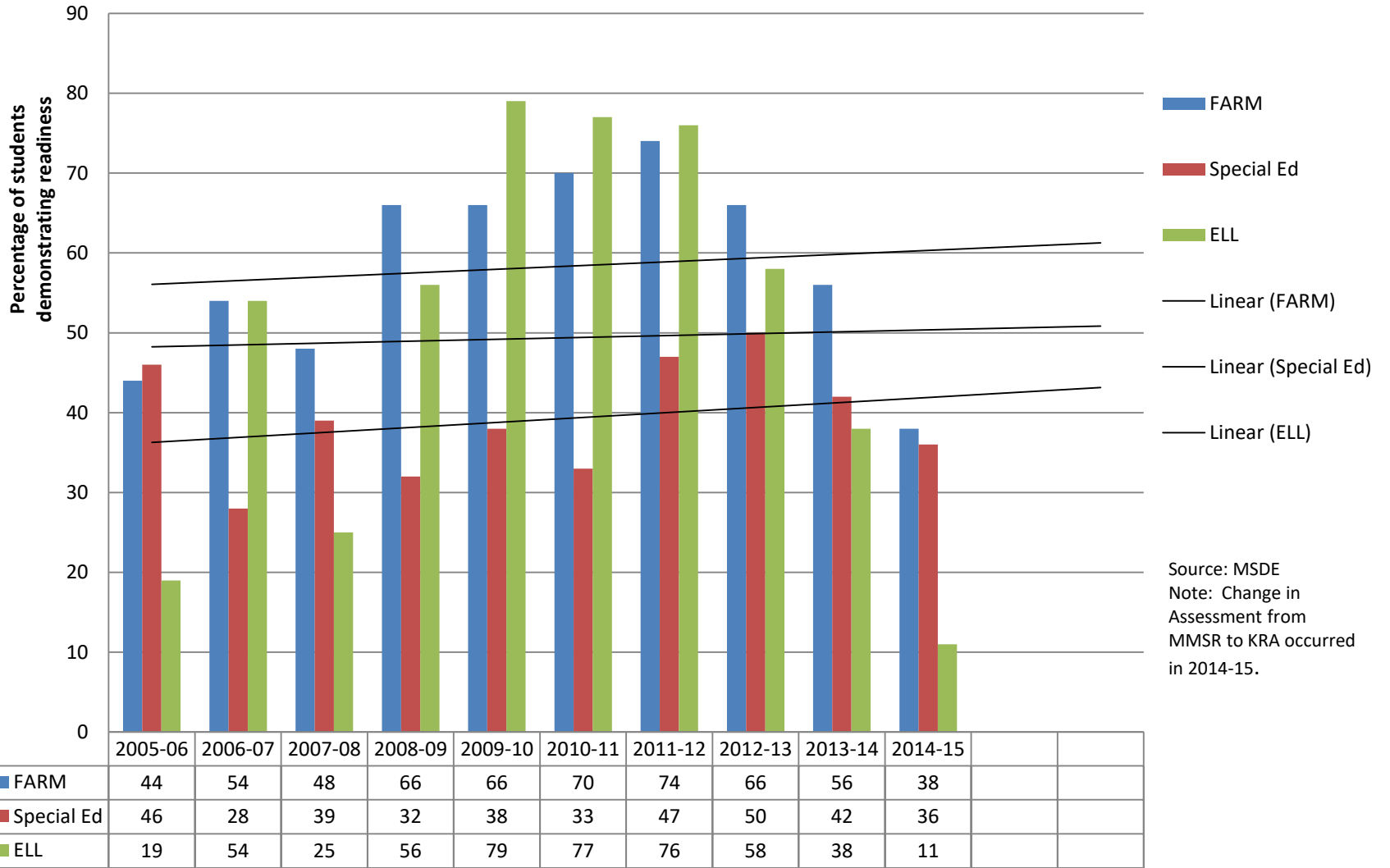
FY 17 – More Information

## Kindergarten Readiness



# TCPS Kindergarten Student Readiness

## Special Populations



# Indicator: Academic Performance – MSA

FY 13 – Positive Progress

FY 16 – Partial data

FY 17 – Measure changing

	2009	2010	2011	2012	2013	2014	2015
<b>Grade 3</b>							
Reading	88.7	80.3	84.8	86.3	81.6	75.4	n/a
Math	84.3	83.1	85.9	88.1	79.3	80.3	n/a
<b>Grade 5</b>							
Reading	86.2	92.1	91.7	90.2	83.0	86.7	n/a
Math	76.5	91.0	82.7	82.3	71.3	66.3	n/a
Science	67.8	85.9	76.2	78.1	72.4	70.6	69.3
<b>Grade 8</b>							
Reading	81.3	77.8	82.3	81.0	81.0	77.9	n/a
Math	71.0	69.1	73.4	70.0	59.6	49.2	n/a
Science	68.2	68.8	67.7	72.9	77.2	72.2	73.6

Note: MSA was transitioned to PARCC assessment. MSA only utilized for Science.



# PARCC Test

## Students Meeting or Exceeding Expectations

Grade	Language Arts	Math
3 <sup>rd</sup>	37.7%	42.9%
4 <sup>th</sup>	46.5%	39.5%
5 <sup>th</sup>	48.4%	41.6%
6 <sup>th</sup>	24.4%	24.4%
7 <sup>th</sup>	41.8%	28.3%
8 <sup>th</sup>	42.6%	11.3%

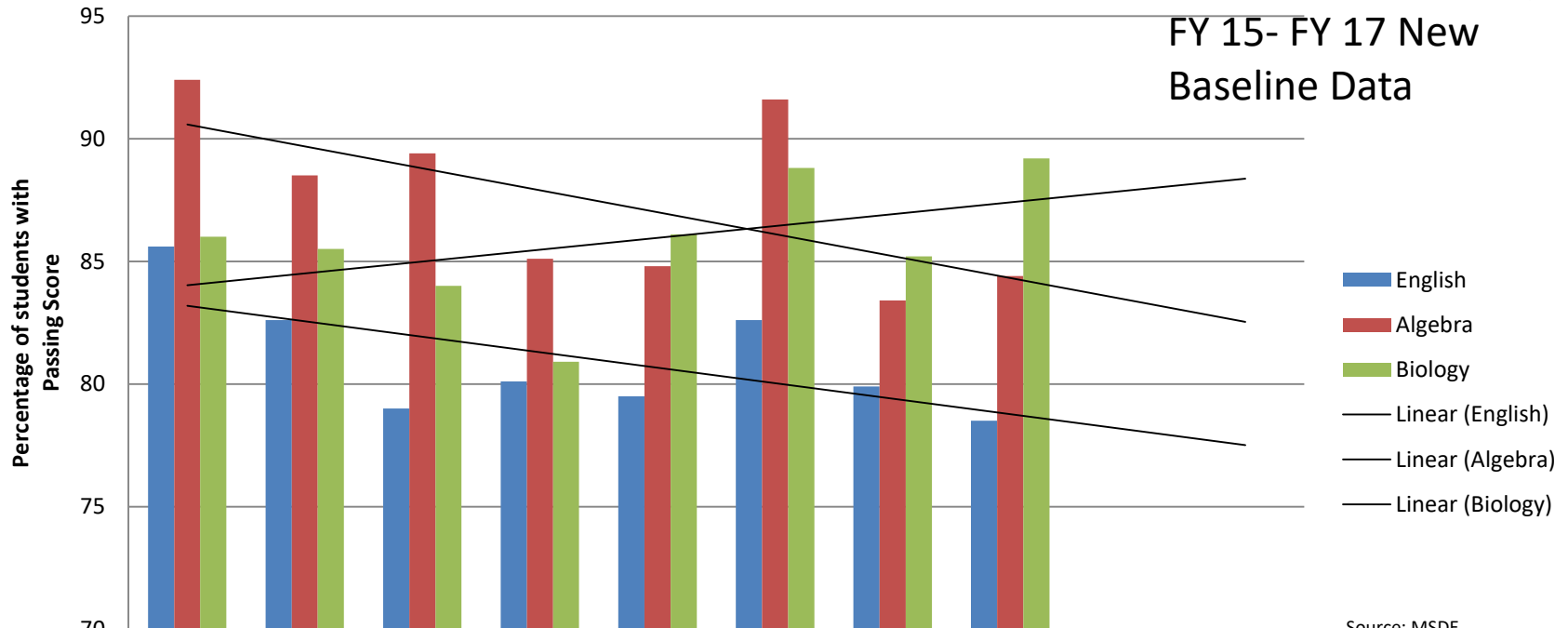
MSDE Talbot County Report Card - 2016

# Indicator: Academic Performance

## High School Assessments

### High School Assessment

FY 13 – Positive Progress  
 FY 15- FY 17 New  
 Baseline Data



	2008	2009	2010	2011	2012	2013	2014	2015		
English	85.6	82.6	79	80.1	79.5	82.6	79.9	78.5		
Algebra	92.4	88.5	89.4	85.1	84.8	91.6	83.4	84.4		
Biology	86	85.5	84	80.9	86.1	88.8	85.2	89.2		

Source: MSDE  
[www.mdreportcard.org](http://www.mdreportcard.org)  
 8

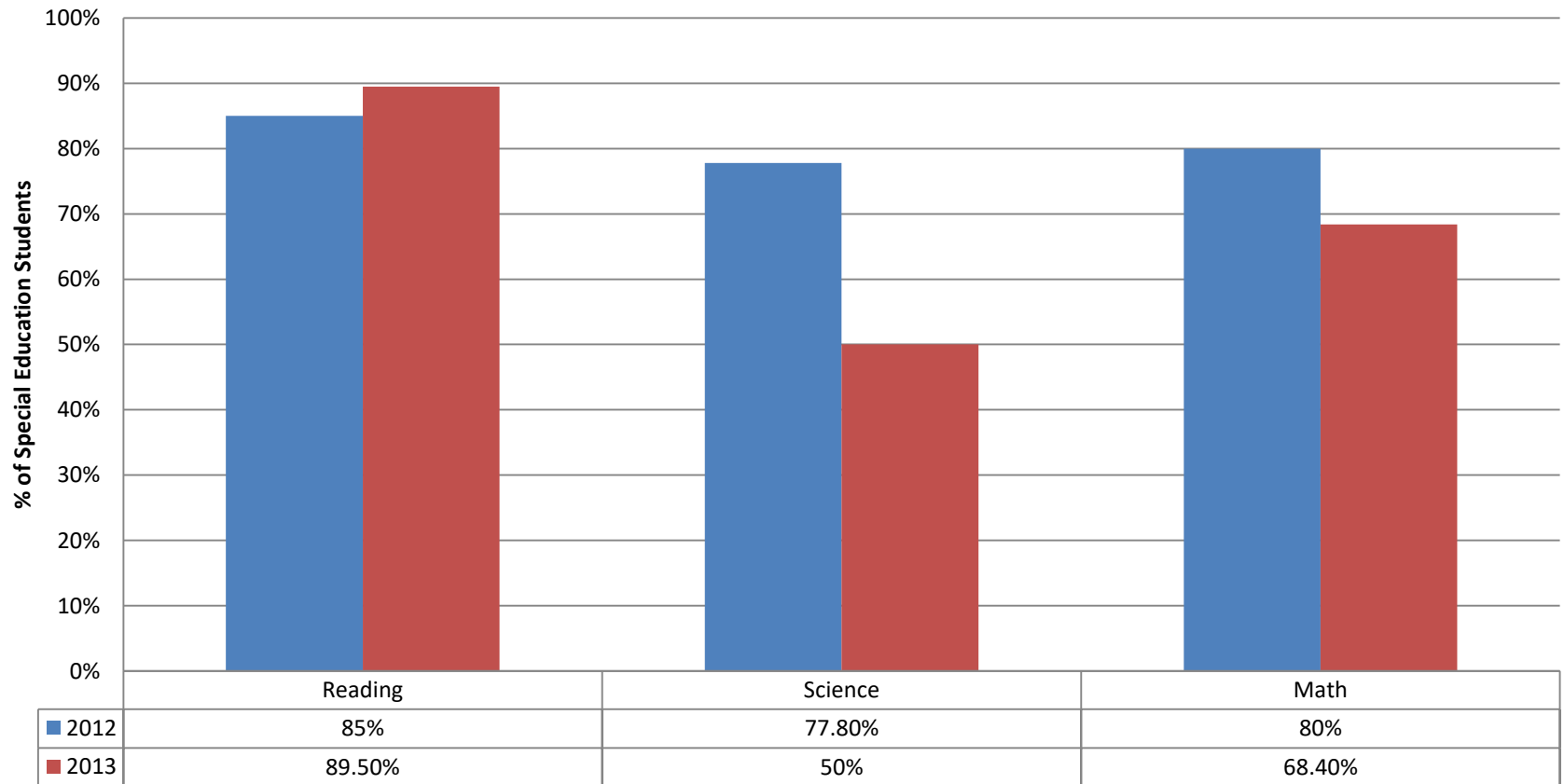
# High School PARCC

Test	Meeting or Exceeding Proficiencies
9 <sup>th</sup> Grade English	Too few
10 <sup>th</sup> Grade English	51.3%
11 <sup>th</sup> Grade English	Too few
Algebra I	38.2%
Algebra II	Too Few
Geometry	Too Few

MSDE Talbot County Report Card 2016

# Alternative MSA

## TCPS Students at or above Proficiency



Source - GOC

# Indicator: High School Program Completion

FY 13 – Positive Progress  
 FY 16-17 – More Information

Completion Category:	2010	2011	2012	2013	2014	2015	
						Talbot	MD
<b>a. University MD Course Requirements</b>	51.6%	39.4%	39.7%	32.8%	26.1%	36.7%	59%
<b>b. Career &amp; Technology Ed Program Requirements</b>	26.3%	26.3%	31.4%	29.0%	26.7%	27.3%	8.2%
<b>c. Both University &amp; Career / Technology Requirements</b>	10.6%	24.6%	18.3%	23.8%	30.9%	11.4%	12.9%
<b>d. Rigorous High School Program Indicator</b>	*	*	*	*	27.9%	26.3%	23.5%
<b>e. At least one of the above categories</b>	88.5%	90.3%	89.4%	85.6%	84.1%	75.4%	80.5%

\* Data Missing

Source: MSDE

# Indicator: Educational Attainment

FY 13 – Positive Progress

FY 16-17 – More

Information

Decision Category:	2010	2011	2012	2013	2014	2015	
						Talbot	MD
Attend a Four Year College	51.1%	47.2%	36.4%	51.1%	45.4%	44.8%	51.1%
Attend a Two Year College	30.3%	31.5%	40.3%	34.2%	37.7%	30%	31.8%
Attend a Specialized School or Training	≤ 5%	≤ 5%	≤ 5%	≤ 5%	≤ 5%	6.6%	3.2%
Enter Employment (related to high school)	≤ 5%	≤ 5%	8.4%	≤ 5%	≤ 5%	≤ 5%	2.2%
Enter Employment (unrelated to high school)	≤ 5%	6.3%	≤ 5%	≤ 5%	5.2%	7.2%	5.6%
Enter Military	≤ 5%	≤ 5%	≤ 5%	≤ 5%	≤ 5%	5.2%	3.2%
Enter Full Time Employment and/or School	6.7%	10.4%	8.1%	13.9%	12.6%	10.7%	11.5%
Enter Part Time Employment and/or School	18.1%	30.2%	41.8%	52.6	48.9%	51.4%	47.3%
Other or No Response	6.3%	5.7%	≤ 5%	≤ 5%	≤ 5%	≤ 5%	3%
Completed Questionnaires	238	318	335	266	231	290	

Source: MSDE

# Educational Attainment

## Talbot Population age 25 and older

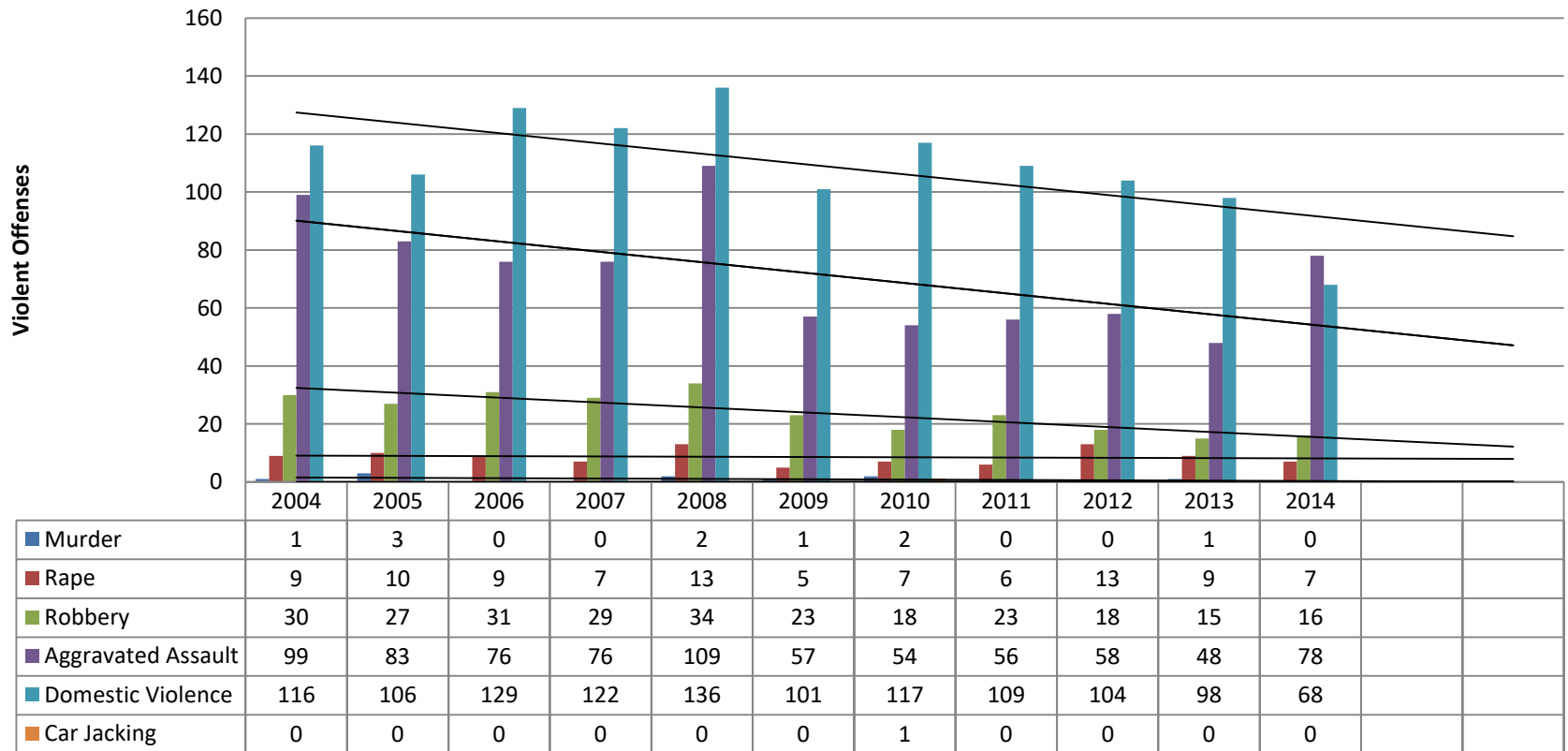
	<b>2013</b>	<b>2015</b>
< 9 <sup>th</sup> grade	4%	4.4%
9 <sup>th</sup> -12 <sup>th</sup> grade (no diploma)	7%	7.1%
HS Grad/GED	28.4%	27.9%
Some college – No degree	20.4%	20.2%
Talbot Population < AA degree	59.8%	59.6%
MD < AA degree	56.8%	62.2%

Source: US Census American Community Survey 2013 and 2015 5 year estimates

# Indicator: Crime

FY 13 – Monitor  
 FY 16-17 –Positive  
 Progress

## Violent Offenses (Adult)



Source: GOCCP/Uniform Crime Report,  
 2014

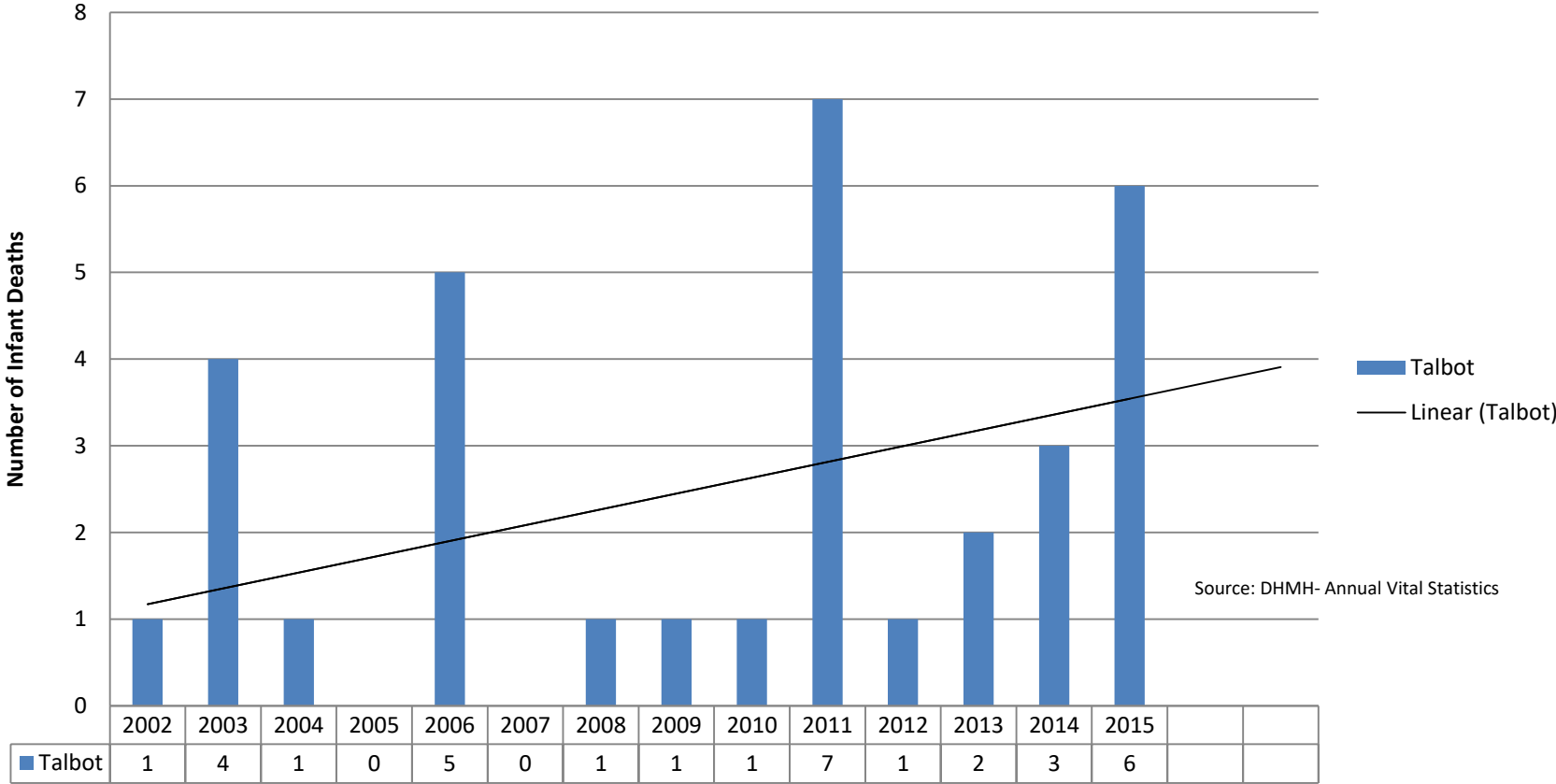


# Indicator: Infant Mortality

FY 13 – Positive Progress

FY 16-17 - Monitor

Infant Mortality

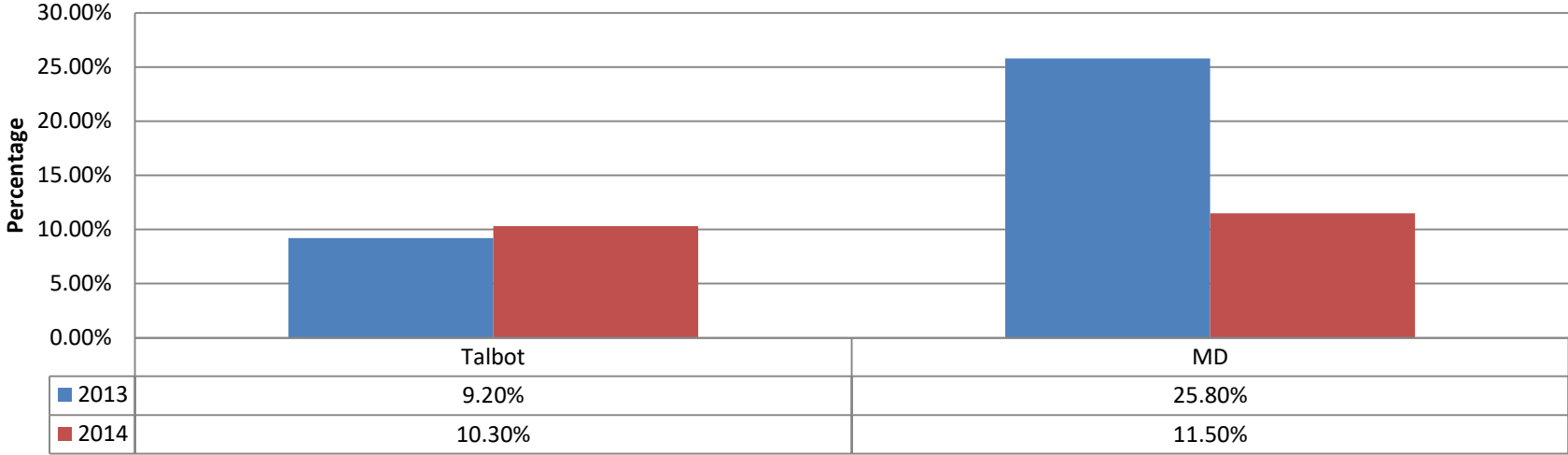


Source: DHMH- Annual Vital Statistics

# Indicator: Obesity

FY 13 – Concern  
 FY 16 – Monitor  
 FY 17 - Monitor

## Childhood Obesity 9-12 graders



Data Source: YRBS, QNOBESE  
 Calculated from Self Report of Height and Weight

### Actual Numbers

2013 N= 745      9.2%= 69 Students  
 2014 N= 692      10.3%=90 Students

YRBS Middle School, grades 6-8

QN 38 – “describe self as over weight” N=642 24.6% Yes = 158 students

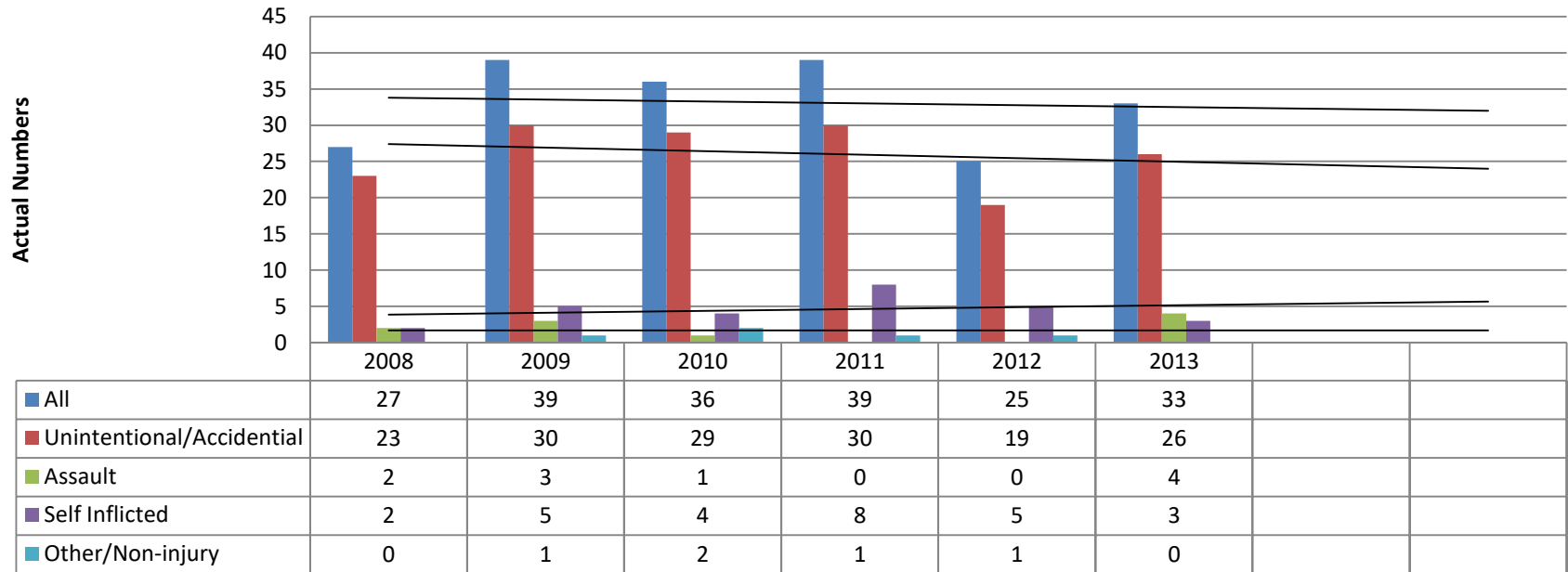
QN 39 – “describe self as over weight” N=692 26.2%=181

# Indicator: Hospitalizations

FY 13 – Positive Progress

FY 16 -Monitor

## Talbot Youth Hospitalizations Aged 0 -21



2017 – Unable to obtain updated information

Data Sources: MD HSCRC, [www.goc.maryland.gov](http://www.goc.maryland.gov)

Data pulled from hospitalization codes

# Indicator: Tobacco Use

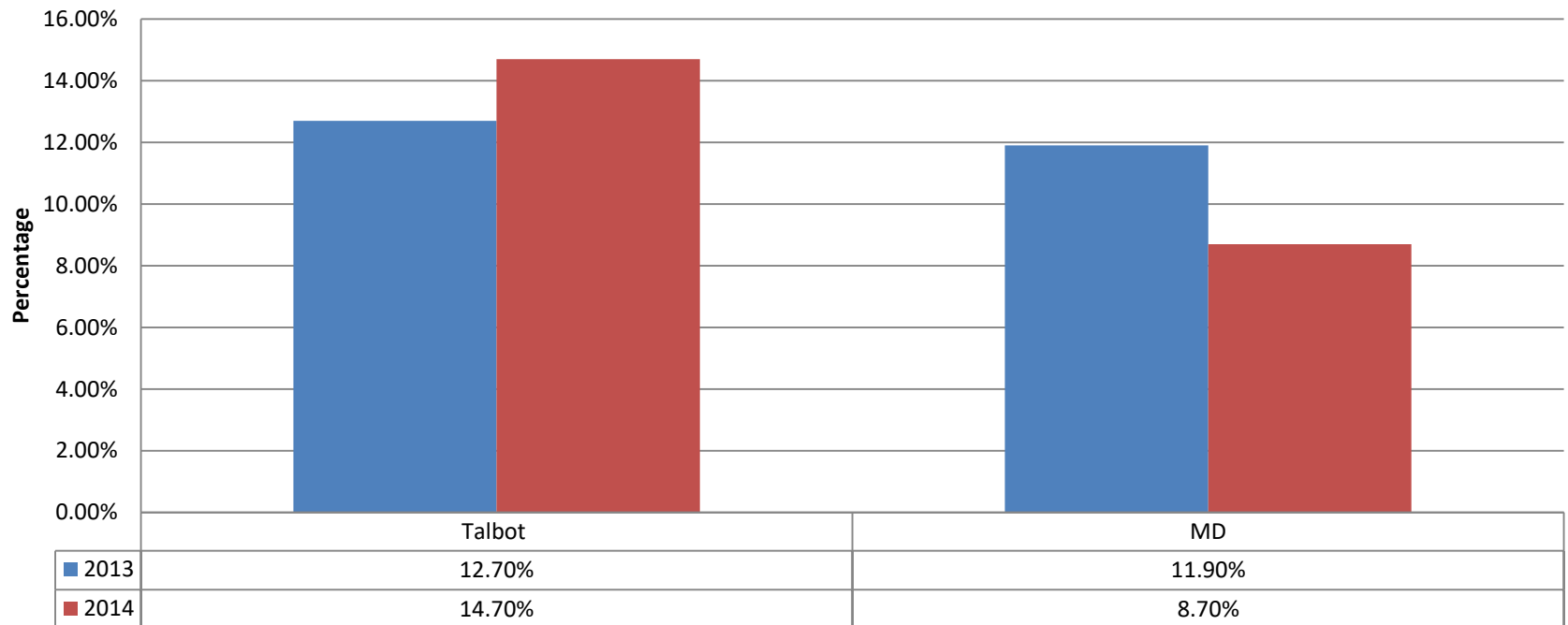
## Smoking

FY 13 – Monitor

FY 16 –Monitor

FY 17 - Monitor

**Student who have smoked tobacco at least once in last 30 days, public**  
9-12 graders



Data Source: YRBS, QN 33,Actual

2013 N=771 16%=123

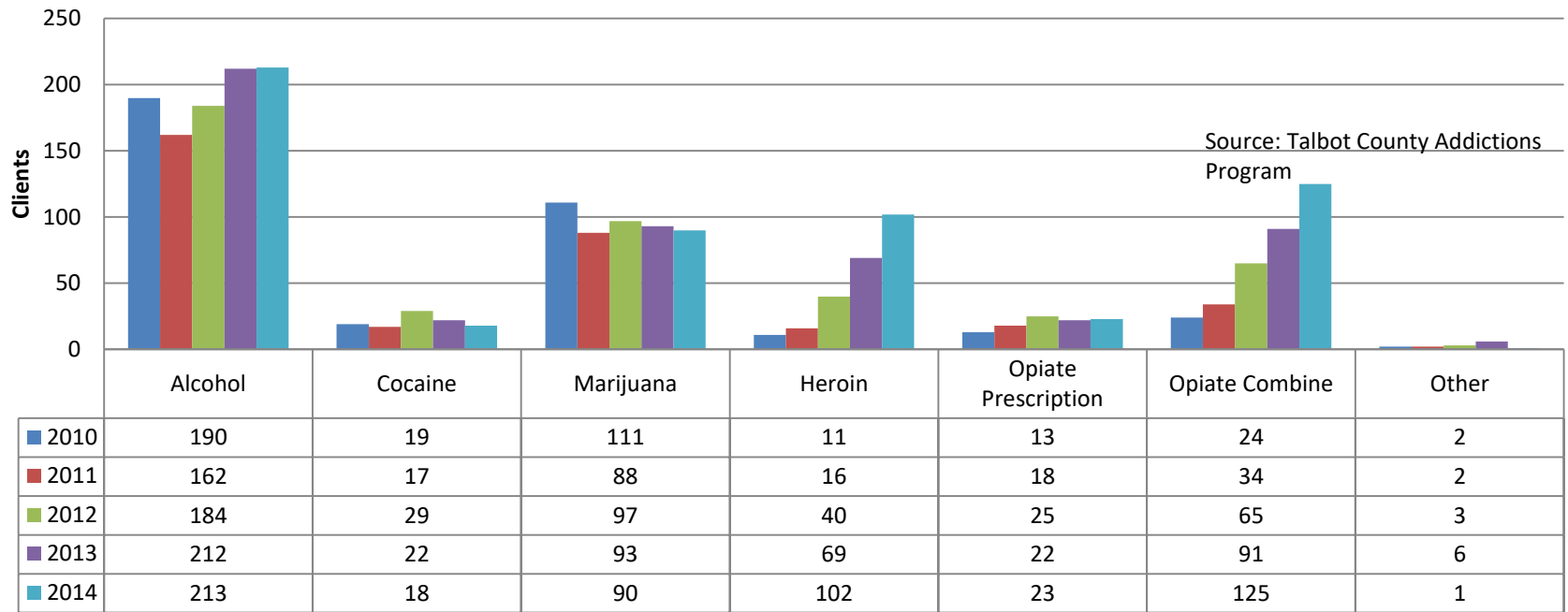
2014 N=929 14.7%=136

YRBS Middle School,QN20

2013 N=636 3.6%=23 students

2014 N= 697 2.4%=17 students

# TCAP Primary Substance Client report



Year	Adolescents Actual Numbers	As % of Total Clients
2010	48	14%
2011	34	11%
2012	33	9%
2013	38	8%
2014	22	5%

## Percent Change from 2010 to 2014 in TCAP Client's Primary Drug Report

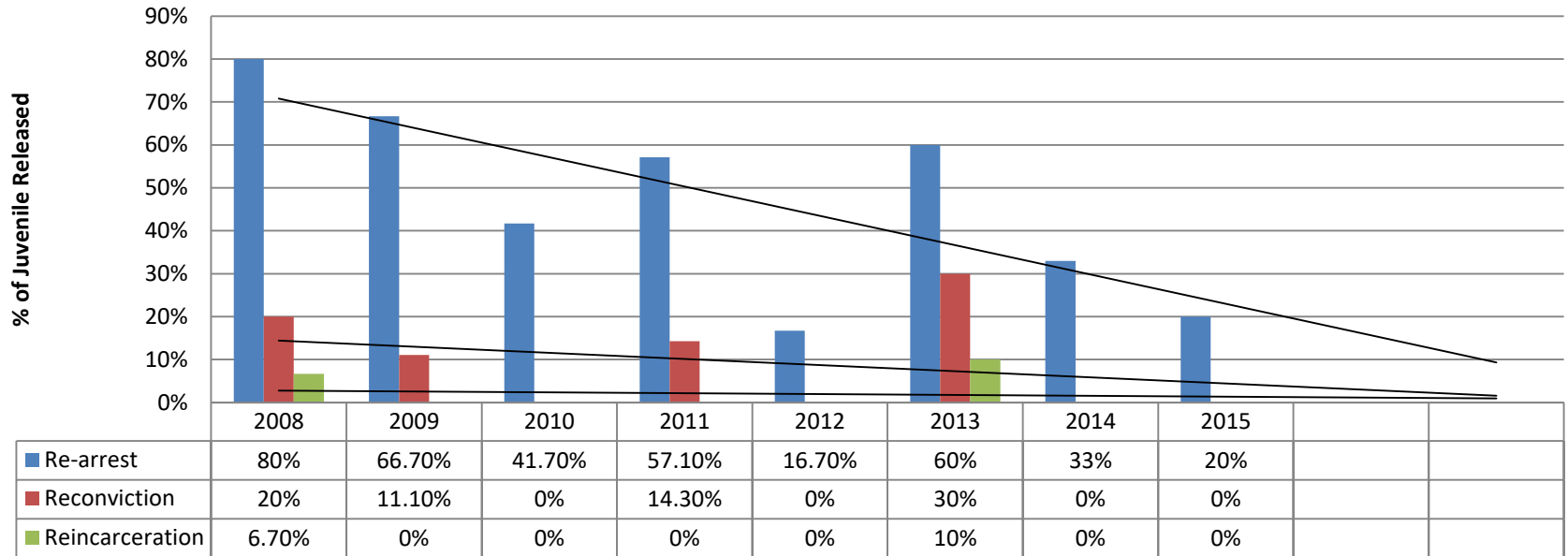
Primary Drug	Total Clients 2010	Total Clients 2014	Difference	Change
Alcohol	<b>190</b>	<b>210</b>	<b>+20</b>	<b>11%</b>
Amphetamine	<b>1</b>	<b>1</b>	<b>0</b>	<b>0%</b>
Benzo	<b>0</b>	<b>0</b>	<b>0</b>	<b>0%</b>
Cocaine/Crack	<b>19</b>	<b>17</b>	<b>-3</b>	<b>-16%</b>
Marijuana	<b>111</b>	<b>72</b>	<b>-39</b>	<b>-35%</b>
Opiate/Heroin	<b>11</b>	<b>102</b>	<b>+91</b>	<b>927%</b>
Opiate/Other (Presc Meds)	<b>13</b>	<b>23</b>	<b>+10</b>	<b>177%</b>
Opiate Combined	<b>24</b>	<b>125</b>	<b>+101</b>	<b>521%</b>

Source: Talbot County Addictions Program

# Indicator: Recidivism

FY 13 – Positive Progress  
 FY 16- Concern  
 FY 17- More Information

## Juvenile Recidivism



	2008	2009	2010	2011	2012	2013	2014	2015
# of Releases	15	18	12	7	6	10	3	5

# Impact of Incarceration on Children and Families

- 150 Talbot residences are currently incarcerated in MD State Prisons According to (July 2015 MD Department of Public Safety and Correctional Services)
- 363 Talbot Residences on Parole or Probation. (July 2015 MD Department of Public Safety and Correctional Services)
- The average daily census at Talbot County Department of Corrections is 58-60.
- Nationally 52% of inmates (51% of men and 62% of women) are parents. (BJS)
- In FY 14 and FY 15, 7%, 2 and 1 respectively, TCDSS Family Preservation/Consolidated Services cases involved an incarcerated parent.